

# MC 5 COM #119H BASIN MC (oil)

(page 1)

Spud: 11/19/14

Completed: 10/26/15

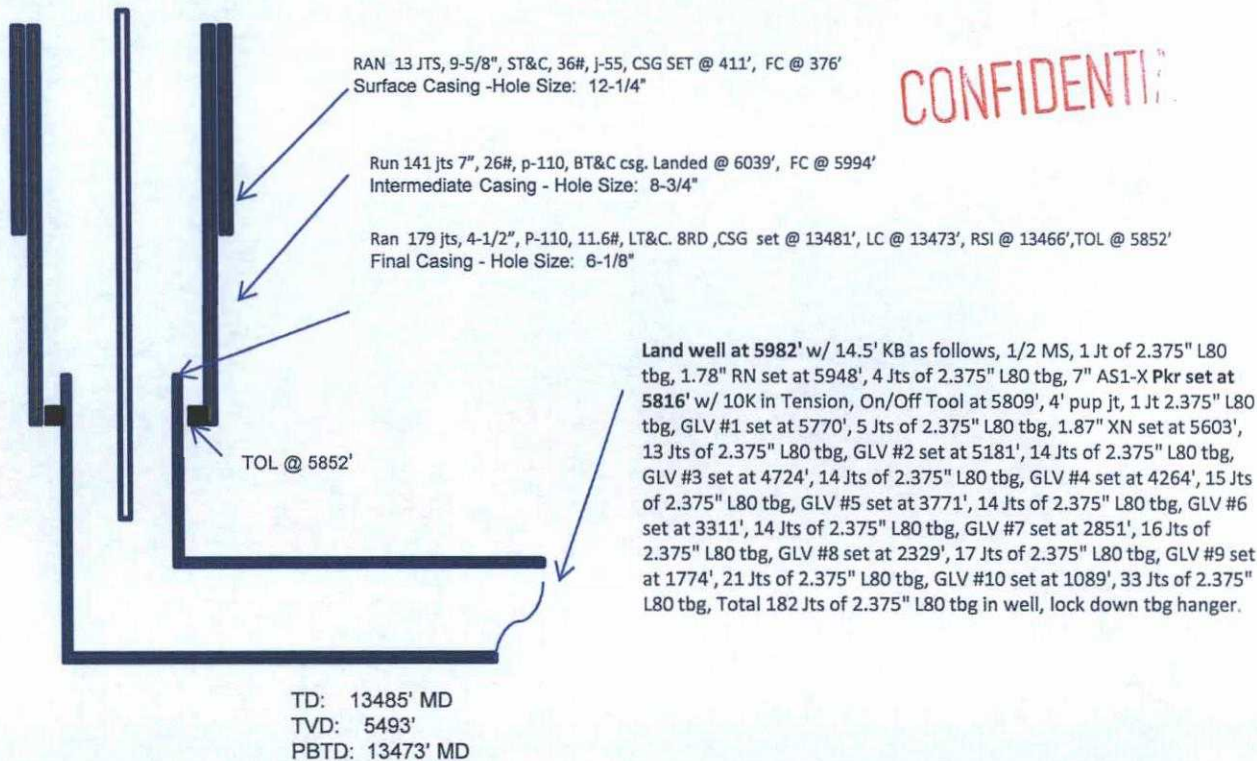
SHL: 1290' FNL & 388' FWL  
NW/4 NW/4 Section 33(D), T24N, R8W

BHL: 332' FSL & 1294' FWL  
SW/4 SW/4 Section 34 (M), T24N, R8W

SAN JUAN NM  
Elevation: 7020'  
API: 30-045-35601

**CONFIDENTIAL**

Tops	MD	TVD
OJO ALAMO	1330	1321
KIRTLAND	1539	1524
PICTURE CLIFFS	1901	1875
LEWIS	2046	2015
CHACRA	2331	2291
CLIFF HOUSE	3420	3347
MENEFEE	3472	3397
PT LOOKOUT	4358	4257
MANCOS	4600	4492
GALLUP	4945	4831



HOLE SIZE	CASING	CEMENT	VOLUME	CMT TOP
12-1/4"	9-5/8"	245 sx	222 cu.ft.	Surface
8-3/4"	7"	1297 sx	1861 cu.ft.	Surface
6-1/8"	4-1/2"	755 sx	1026 cu. ft.	TOL 5852'

Lg 10/29/15

RV



# MC 5 COM #119H BASIN MC (oil)

(page 2 – lateral with completion)

MC 23<sup>RD</sup>  
8615'-8769'- with  
24, 0.40" holes.  
Frac MANCOS  
23<sup>rd</sup> stage with  
214,163#, 20/40  
PSA Sand

MC 21<sup>ST</sup>  
9027'-9181'- with  
24, 0.40" holes.  
Frac MANCOS  
21<sup>st</sup> stage with  
214,575#, 20/40  
PSA Sand

MC 19<sup>th</sup>  
9439'-9595'-  
with 24, 0.40"  
holes. Frac  
MANCOS 19<sup>th</sup>  
stage with  
215,971#, 20/40  
PSA Sand

MC 17<sup>th</sup>  
9851'-10010'-  
with 24, 0.40"  
holes. Frac  
MANCOS 17<sup>th</sup>  
stage with  
213,486#, 20/40  
PSA Sand

MC 15<sup>th</sup>  
10263'-10417'-  
with 24, 0.40"  
holes. Frac  
MANCOS 15<sup>th</sup>  
stage with  
214,375#, 20/40  
PSA Sand

MC 13<sup>th</sup>  
10675'-10831'-  
with 24, 0.40"  
holes. Frac  
MANCOS 13<sup>th</sup>  
stage with  
207,848#, 20/40  
PSA Sand

MC 11<sup>th</sup>  
11090'-  
11241'- with  
24, 0.40"  
holes. Frac  
MANCOS 11<sup>th</sup>  
stage with  
214,671#, 20/40  
PSA Sand

MC 9<sup>th</sup>  
11499'-11651'- with  
24, 0.40" holes.  
Frac MANCOS 9<sup>th</sup>  
stage with  
214,756#, 20/40  
PSA Sand

MC 8<sup>th</sup>  
11705'-11861'-  
with 24, 0.40"  
holes. Frac  
MANCOS 8<sup>th</sup>  
stage with  
214,729#, 20/40  
PSA Sand

MC 10<sup>th</sup>  
11293'-  
11447'-  
with 24,  
0.40" holes.  
Frac  
MANCOS  
10<sup>th</sup> stage  
with  
214,352#, 20/40  
PSA Sand

MC 7<sup>th</sup>  
11911'-12069'-  
with 24, 0.40"  
holes. Frac  
MANCOS 7<sup>th</sup>  
stage with  
214,726#, 20/40  
PSA Sand

MC 6<sup>th</sup>  
12117'-  
12271'- with  
24, 0.40"  
holes. Frac  
MANCOS 6<sup>th</sup>  
stage with  
214,431#, 20/40  
PSA Sand

MC 5<sup>th</sup>  
12323'-12477'-  
with 24, 0.40"  
holes. Frac  
MANCOS 5<sup>th</sup>  
stage with  
217,692#, 20/40  
PSA Sand

MC 4<sup>th</sup>  
12539'-12727'-  
with 24, 0.40"  
holes. Frac  
MANCOS 4<sup>th</sup>  
stage with  
201,075#, 20/40  
PSA Sand

MC 3<sup>rd</sup>  
12785'-13971'-  
with 24, 0.40"  
holes. Frac  
MANCOS 3<sup>rd</sup>  
stage with  
214,750#, 20/40  
PSA Sand

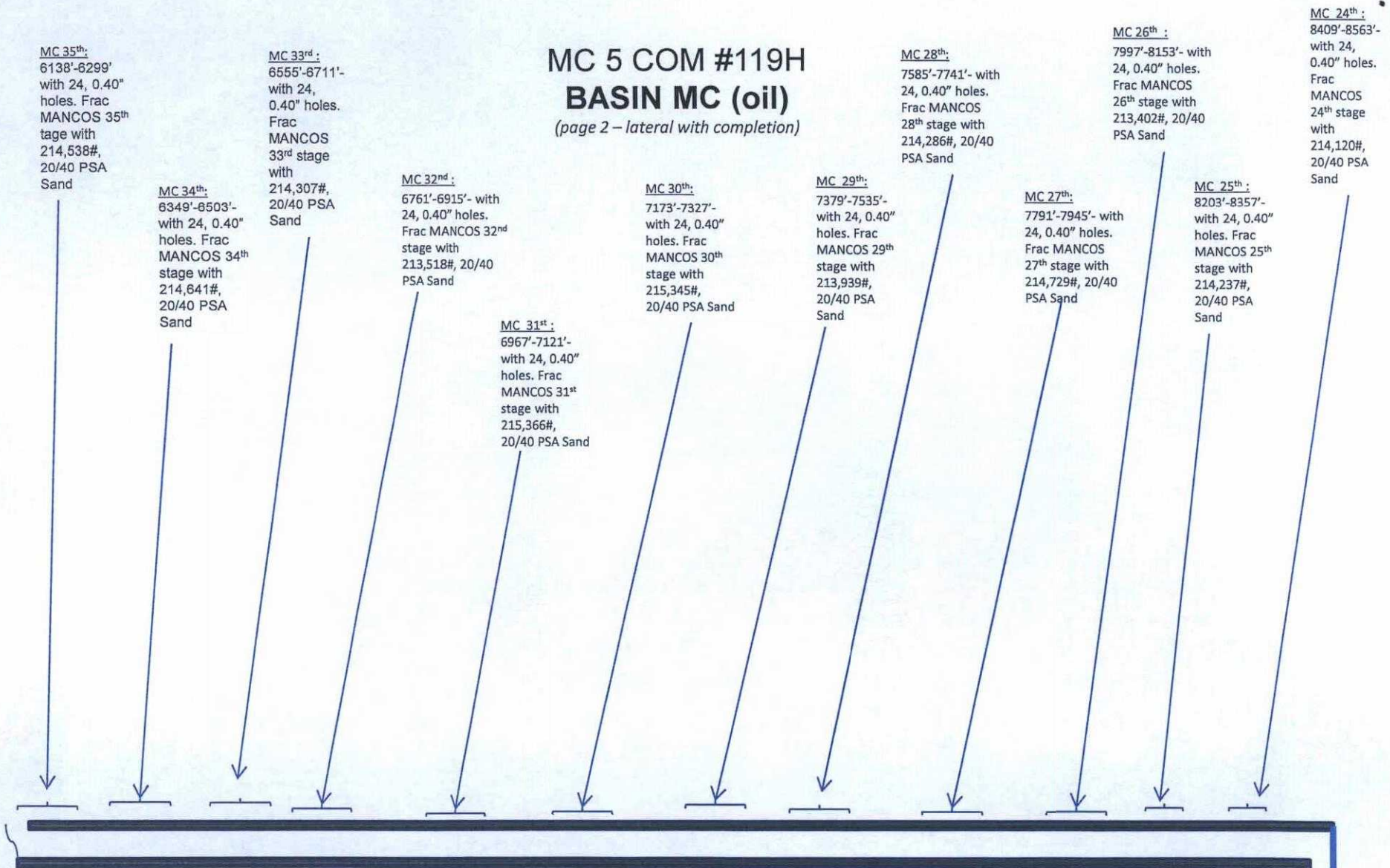
MC 2<sup>nd</sup>  
13031'-  
13215'-with  
24, 0.40"  
holes. Frac  
MANCOS 2<sup>nd</sup>  
stage with  
215,623#, 20/40  
PSA Sand

MC 1<sup>st</sup>  
13277'-  
13461' + RSI  
TOOL @  
13466' with  
214,319#  
20/40 PSA  
Sand

See page 1 for upper portion of hole



**MC 5 COM #119H**  
**BASIN MC (oil)**  
(page 2 – lateral with completion)



See page 1 for upper portion of hole