

UNITED STATES
DEPARTMENT OF THE INTERIOR
BUREAU OF LAND MANAGEMENT

RECEIVED

FEB 09 2016

FORM APPROVED
OMB No. 1004-0137
Expires: March 31, 2007

SUNDRY NOTICES AND REPORTS ON WELLS

Do not use this form for proposals to drill or to re-enter an abandoned well. Use Form 3160-3 (APD) for such proposals.

SUBMIT IN TRIPLICATE - Other instructions on page 2.

1. Type of Well

☐ Oil Well ☐ Gas Well ☒ Other

2. Name of Operator

WPX Energy Production Company, LLC

3a. Address

PO Box 640 Aztec, NM 87410

3b. Phone No. (include area code)

505-333-1822

4. Location of Well (Footage, Sec., T., R., M., or Survey Description)

SHL: 2,460' FNL & 2,095' FWL sec 25, T31N, R5W
BHL: 2,414' FNL & 1,951' FWL, sec 25, T31N, R5W

Lease Serial No.
NMSF-078768

6. If Indian, Allottee or Tribe Name

7. If Unit of CA/Agreement, Name and/or No.
NMNM78407E

8. Well Name and No.
Rosa Unit #2 SWD

9. API Well No.
30-039-30812

10. Field and Pool or Exploratory Area

11. Country or Parish, State
Rio Arriba, NM

12. CHECK THE APPROPRIATE BOX(ES) TO INDICATE NATURE OF NOTICE, REPORT OR OTHER DATA

TYPE OF SUBMISSION	TYPE OF ACTION			
<input type="checkbox"/> Notice of Intent	<input type="checkbox"/> Acidize	<input type="checkbox"/> Deepen	<input type="checkbox"/> Production (Start/Resume)	<input type="checkbox"/> Water Shut-Off
	<input type="checkbox"/> Alter Casing	<input type="checkbox"/> Fracture Treat	<input type="checkbox"/> Reclamation	<input type="checkbox"/> Well Integrity
<input checked="" type="checkbox"/> Subsequent Report	<input type="checkbox"/> Casing Repair	<input type="checkbox"/> New Construction	<input type="checkbox"/> Recomplete	<input checked="" type="checkbox"/> Other <u>Repair Casing</u>
	<input type="checkbox"/> Change Plans	<input type="checkbox"/> Plug and Abandon	<input type="checkbox"/> Temporarily Abandon	<u>Leak- Squeeze</u>
<input type="checkbox"/> Final Abandonment Notice	<input type="checkbox"/> Convert to Injection	<input type="checkbox"/> Plug Back	<input type="checkbox"/> Water Disposal	

13. Describe Proposed or Completed Operation: Clearly state all pertinent details, including estimated starting date of any proposed work and approximate duration thereof. If the proposal is to deepen directionally or recompleat horizontally, give subsurface locations and measured and true vertical depths of all pertinent markers and zones. Attach the Bond under which the work will be performed or provide the Bond No. on file with BLM/BIA. Required subsequent reports must be filed within 30 days following completion of the involved operations. If the operation results in a multiple completion or recompleat in a new interval, a Form 3160-4 must be filed once testing has been completed. Final Abandonment Notices must be filed only after all requirements, including reclamation, have been completed and the operator has determined that the site is ready for final inspection.)

1/14/16- MIRU

1/15/16- CIRC WELL

1/16/16-1/17/16- Shut down for weekend

1/18/16- MIRU, POOH TBG & SPOOL UP ESP

1/19/16- Continue to pooh with 257 jts 3.5" eue8rd I-80 plastic lined tbg, ESP, de-sander, 10 jts 2.875" eue8rd n-80 tbg LD ESP

1/21/16-TIH with pkr and tbg and land as follows top down: 3.5" eue8rd tbg hanger, 260 jts 3.5" eue8rd n-80 9.3# plastic lined tbg, 2.81" profile nipple @8243.46', 1jt 3.5" eue8rd n-80 tbg, 2.81" seal nipple w/ on off tool @8276.35', 7" x 3.5" AS1X pkr elements @8282.05' w/ wireline re-entry guide(. bottom of pkr @8286') set pkr @8286' release with on off tool circulat full and wait on 2%KCL pkr fluid w/corrosion inhibitor. Attempt to un-jay to circulate pkr fluid could not un-jay load hole to equalize then un-jay. land tbg hanger with 20k and pkr with 40k pressure test csg to 500psi held 5min secure well sdon

14. I hereby certify that the foregoing is true and correct.

Name (Printed/Typed)

Lacey Granillo

Title Permitting Tech III

Signature

Date 2/9/16

THIS SPACE FOR FEDERAL OR STATE OFFICE USE

Approved by

Title

Date

Conditions of approval, if any, are attached. Approval of this notice does not warrant or certify that the applicant holds legal or equitable title to those rights in the subject lease which would entitle the applicant to conduct operations thereon.

Office

Title 18 U.S.C. Section 1001 and Title 43 U.S.C. Section 1212, make it a crime for any person knowingly and willfully to make to any department or agency of the United States any false, fictitious or fraudulent statements or representations as to any matter within its jurisdiction.

ACCEPTED FOR RECORD

NMOCDAV

FEB 10 2016

FARMINGTON FIELD OFFICE

BY: William Tambekou 4

Rosa Unit #2 SWD

1/22/16- (Monica w/ OCD on location) perform pressure tests on surface and intermediate csg both passed. load 7" prod csg attempt to test and bleed off air 4 times would loose pressure steadily (about 40 psi in 1 1/2 minutes). Search for wellhead leaks found minor valve leak greased valve would still loosr pressure at same rate. move prk down 6' would not test . Move up 32' still would not test decision made to pooh with prk testing backside 2-3 times and inspect prk secure well too late to start pooh prk

1/23/16-1/24/16- Shut down for weekend

1/25/16- tih pooh propile plug

1/26/16- WPX received verbal approval to proceed with re-squeezing from OCD (Monica) and BLM (William)

release PKR pooh and ld 136 jts 3.5" eue8rd plastic lined tbg

1/27/16- pooh and LD remainder of 3.5" eue8rd n-80 plastic lined tbg total of 260jts total ld AS1X PKR. tih with 7" regular GS retrievable bridge plug and 128 jts 2.875" eue8rd n-80 workstring sd as per USFS regs

1/28/16- continue in hole with 2.875" eue8rd n-80 workstring and 7" GS rtbp to 8287' 265 total jts. Set rtbp. pressure test csg to 550psi, lost 100psi in 11 minutes. TIH with 7" HD compression set prk and 60 jts 2.875" eue8rd tbg sd for USFS regs

1/29/16- continue in hole with prk to pressure test RTBP and verify hole in csg. found leak in existing squeez holes @ 8022' pressure to 550psi lost 100psi in 2minutes. PU above leak and test csg 500psi held 5minutes. TOO H with PKR pour 7- 40 lb sacks down csg to cover RTBP @8287' wait 30 minutes for sand to fall. TIH with work string (2.875" eue8rd n-80) and PKR as follows: 16 jt tail pipe , 7" HD compression set PKR, and 20 jts sd as per USFS regs

1/30/16- continue in hole with PKR and 2.875" eue8rd n-80 workstring as follows: 16jt tail pipe, 7" HD compression set PKR 242jts EOT @ 8059. circulate entire hole with 290 bbls fresh water to aquire uniform weight fluid prior to pumping balanced plug.

Squeeze: mix and pump 9 bbls(50sks) class G cement with Baker Hughes additives 0.1% FL-52, 0.4% FL-63, 0.15% CD-32, gps FP-6L and 46bbls water. Slurry weight-15.6, yield-1.18, pooh with 4 stds to 7768' EOT reverse out 50bbls got cement colored water and no cement set prk pressure test csg above prk to 500 psi held 5 minutes squeeze to 500psi down tbg and began staging with 7 increasing pressures working up to 1200 psi while pumping 6/10ths bbl of slurry. Finally unable to pump any more volume . Shut down and close TIW valve on tbg

1/31/16- SD

2/1/16- tooh with 7" HD compression set PKR and workstring ld PKR. TIH with 6.875" blade bit ,XO, 4- 3.5" collars and 123 stds tag TOC @7760' LD 14 jts to drill out with pu 2.5 swivel

2/2/16- tag TOC @ with 123 stds of 2.875" eue8rd 6.5# n-80 tbg ,4-3.5" drill collars,XO, 6.625" blade bit. 1st 1/2jt drilled like cement was soft then cement was hard for total of 10 jts. circulate clean prepare to pressure test. close rams pressure test csg to 590psi for 15minutes held perfect. continue in hole to circulate 15' of sand off of RTBP @8387' tag sand pick up 1jt and sd as per USFS regs will circulate sand off of RTBP in AM after 9:00. secure location

2/3/16- tag sand on RTBP @8272' reverse circulate sand off of plug and tag top of plug @8287' circulate clean. pooh with 2.875" workstring and collars and bit ld collars and bit. tih with 2.875" eue8rd n-80 6.5# and retrieving tool sd with 200 jts in hole as per USFS regs

2/4/16- pump 160 bbls of 10lb brine to kill and put well on vacume cannot pooh tbg because of USFS regs secure location

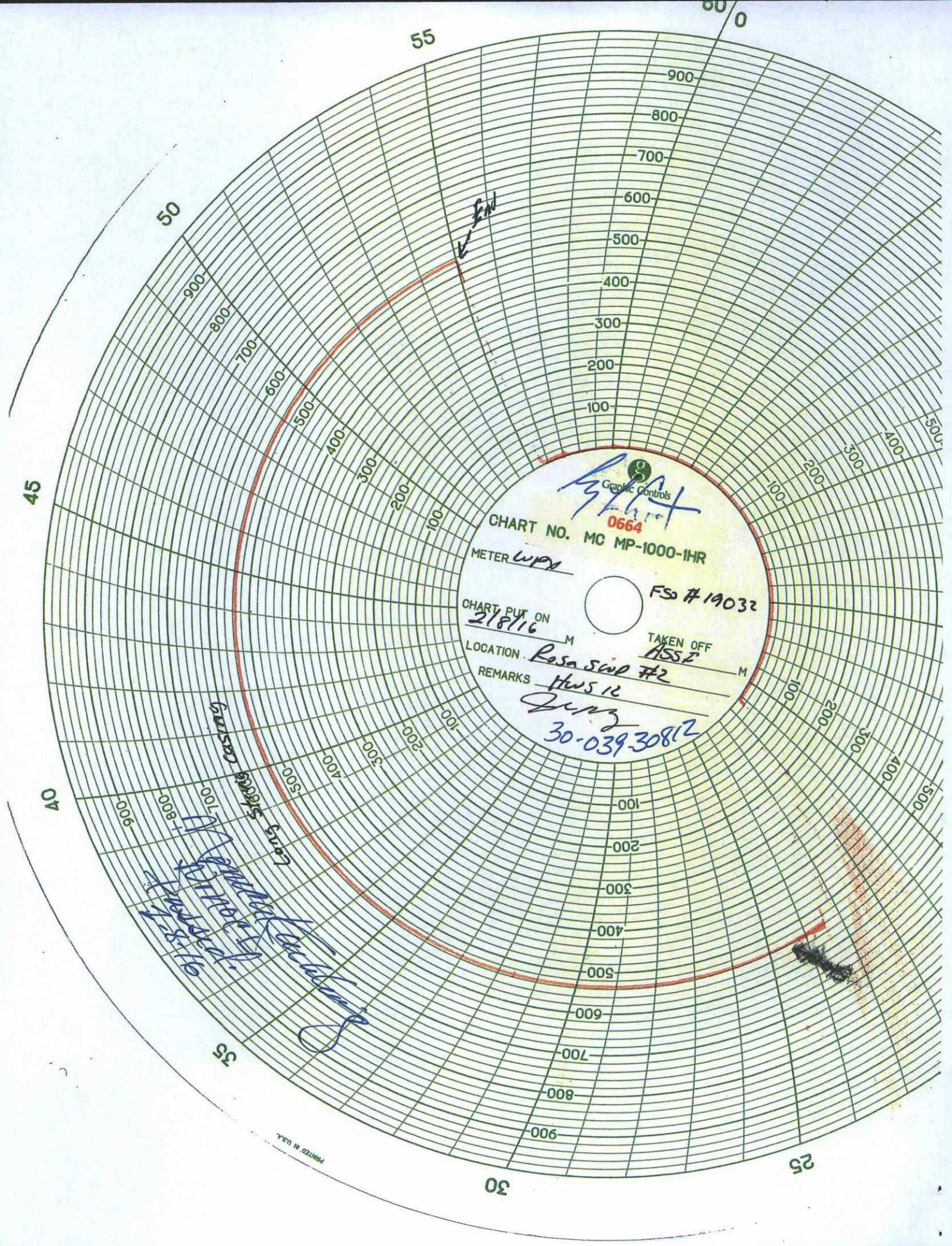
2/5/16- pooh and ld workstring and RTBP on floats remove floats from location. start in hole with 7" x 3.5" AS1X prk and 20jts 3.5" plastic lined tbg sd for USFS regs

2/6/16- continue in hole with PRK and 3.5" tbg 261jts. (tie back to set prk)

land and set 7"AS1X prk and 261 jts 3.5" eue8rd n-80 9.3# plastic lined tbg as follows top down: 3.5" eue8rd tbg hanger, 260 jts , 2.81" seal nipple w/ on off tool @8276.35' , 7" x 3.5" AS1X PKR, elements @8282' with wireline re-entry guide on bottom of PKR @8286' (50k on prk 15k on hanger)

2/7/16- ru antelope s&s to preform pressure test prior to state MIT in AM. Pressure to 620psi on 7" csg watch chart for 45minutes held pressure perfectly.

2/8/16- OCD witnessed braden head and intermediate test . Then MIT test to 540psi for 30+ minutes all passed. Witnessed by Monica Kueling (OCD)
RDMO



55

0

900

800

700

600

500

400

300

200

100

50

45

CHART NO. MC MP-1000-1HR

METER WPM

FS #19032

CHART PUT ON

218716

TAKEN OFF

HSSZ

LOCATION

Rosa Sand #2

REMARKS

HWS 12

30-03930812

J. J. J. J. J.

Handwritten notes:
HWS 12
21-8-16

PRINTED IN U.S.A.

30

25

ROSA UNIT SWD #002 ENTRADA

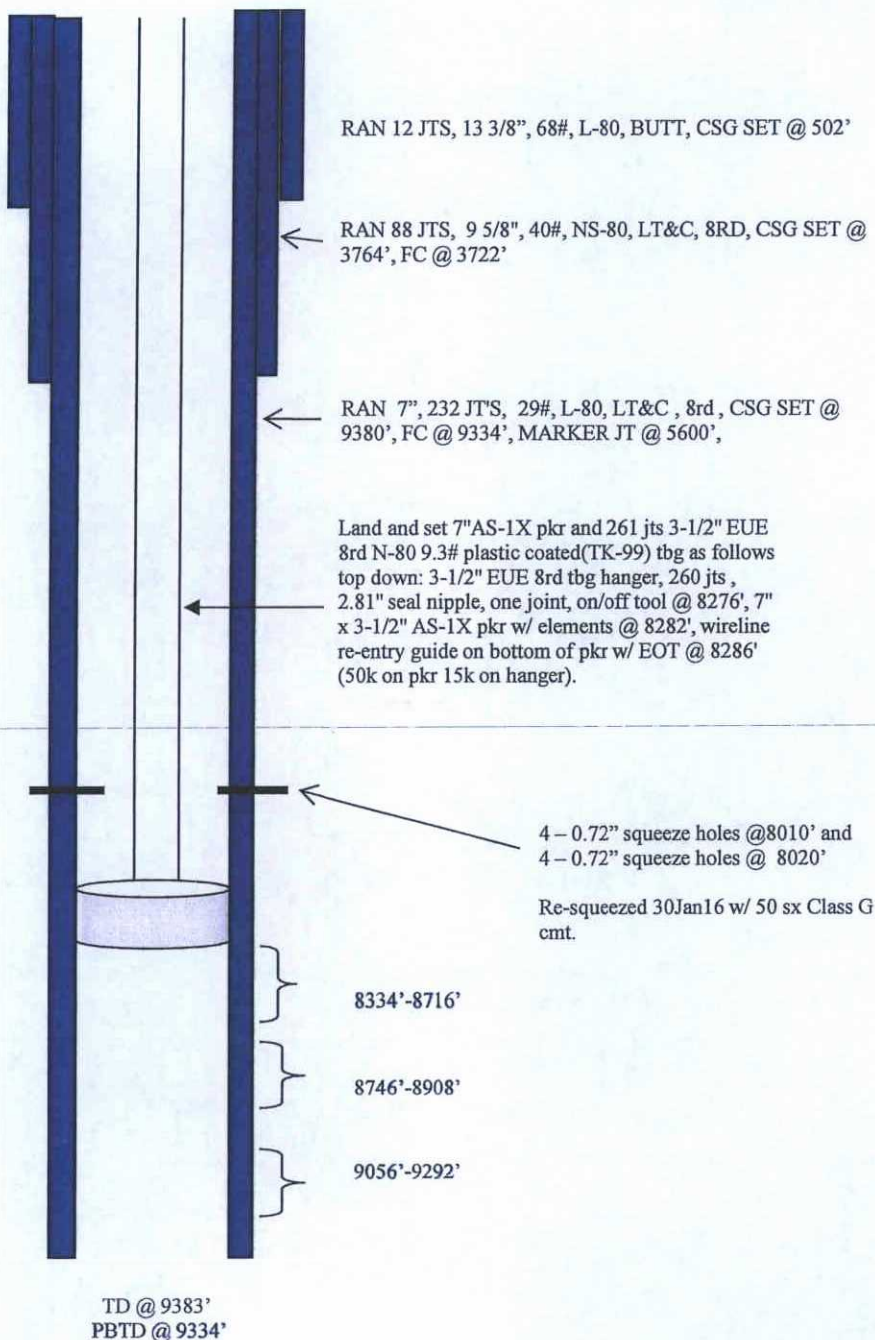
Spud Date 8/26/10
Completed 10/29/10

Surface Location:

Sur: 2460' FNL & 2095' FWL
BHL: 2414' FNL & 1951' FWL
Sec 25, 31N, 5W
Rio Arriba, NM

Elevation: 6447' GR
API #: 30-039-30812

<u>Tops</u>	<u>Depth</u>
Fruitland	3080'
Lewis	3607'
Cliff House	5521'
Point Lookout	5744'
Mancos	6204'
Graneros	7850'
Dakota	7992'
Morrison	8218'
Bluff	8736'
Entrada	9052'



HOLE SIZE	CASING	CEMENT	CU. FT.	CMT TOP
17 1/2"	13 3/8", 68#	690 s xs	792 cu.ft.	surface
12 1/4"	9 5/8", 40#	870 s xs	1783 cu.ft.	surface
8 3/4"	7", 29#	705 s xs	989 cu.ft.	3400' - CBL