

State of New Mexico
Energy, Minerals and Natural Resources Department

Form C-103
Revised 1-1-89

DISTRICT I
P.O. Box 1980, Hobbs, NM 88240

DISTRICT II
P.O. Drawer DD, Artesia, NM 88210

DISTRICT III
1000 Rio Brazos Rd., Aztec, NM 87410

OIL CONSERVATION DIVISION
2040 Pacheco St.
Santa Fe, NM 87505

WELL API NO.
30-045-24190

5. Indicate Type of Lease
STATE ☒ FEE ☐

6. State Oil & Gas Lease No.
L-2986

7. Lease Name or Unit Agreement Name

New Mexico State

8. Well No.

2

9. Pool name or Wildcat

Nageezi Gallup

SUNDRY NOTICES AND REPORTS ON WELLS

(DO NOT USE THIS FORM FOR PROPOSALS TO DRILL OR TO DEEPEN OR PLUG BACK TO A
DIFFERENT RESERVOIR. USE "APPLICATION FOR PERMIT"
(FORM C-101) FOR SUCH PROPOSALS)

1. Type of Well:

OIL
WELL ☒

GAS
WELL ☐

OTHER

2. Name of Operator

Elm Ridge Exploration Company, LLC

3. Address of Operator

PO Box 156, Bloomfield, NM 87413

4. Well Location

Unit Letter M : 950 Feet From The South Line and 980 Feet From The West Line

Section 32 Township 24N Range 8W NMPM San Juan County

10. Elevation (Show whether DF, RKB, RT, GR, etc.)

6956' KB

Check Appropriate Box to Indicate Nature of Notice, Report, or Other Data

11. NOTICE OF INTENTION TO:

PERFORM REMEDIAL WORK ☐ PLUG AND ABANDON ☒

TEMPORARILY ABANDON ☐ CHANGE PLANS ☐

PULL OR ALTER CASING ☐

OTHER: ☐

SUBSEQUENT REPORT OF:

REMEDIAL WORK ☐ ALTERING CASING ☐

COMMENCE DRILLING OPNS. ☐ PLUG AND ABANDONMENT ☐

CASING TEST AND CEMENT JOB ☐

OTHER: ☐

12. Describe Proposed or Completed Operations (Clearly state all pertinent details, and give pertinent date, including estimated date of starting any proposed work) SEE RULE 1103.

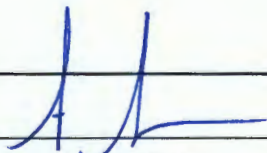
Elm Ridge Exploration Company, LLC requests permission to plug and abandon this well according to the attached procedure.

Notify NMOCD 24 hrs
prior to beginning
operations

OIL CONS. DIV DIST. 3

APR 04 2016

SIGNATURE



TITLE

Sr. Regulatory Supervisor

DATE

03/30/16


TYPE OR PRINT NAME

Amy Archuleta

TELEPHONE NO. 505-632-3476 x 201

(This space for State Use)

APPROVED BY



TITLE

DEPUTY OIL & GAS INSPECTOR

DISTRICT #3

DATE

4-22-16

CONDITIONS OF APPROVAL, IF ANY:

KC5

Plugging Program for New Mexico State #2

MOL and RU. 2-3/8" tubing is stuck in hole. Run freepoint to determine where to chemically cut off tubing. Cut off tubing. Mill over tubing stub until free. TOOH with fish.

Plug 1: TIH with 2-3/8" tubing. Set retainer at 5152'. Squeeze 5 sx below retainer and spot 4 sx on top of retainer, to cover top of perfs and Gallup. Pull up and reverse circulate with 2 tubing volumes of water.

Plug 2: With end of tubing at 4360', spot 12 sx balanced plug from 4360-4260', to cover top of Mancos. Pull up and reverse circulate with 2 tubing volumes of water.

Plug 3: With end of tubing at 3210', spot 12 sx balanced plug from 3210-3110', to cover top of Mesaverde. Pull up and reverse circulate with 2 tubing volumes of water.

Plug 4: Perforate 4 holes at 2150'. Set retainer at 2100'. Squeeze 43 sx below retainer, and spot 4 sx on top of retainer, to cover top of Chacra inside and outside casing.

Plug 5: Perforate 4 holes at 1772'. Set retainer at 970'. Squeeze 226 sx below retainer, and spot 4 sx on top of retainer to cover Pictured Cliffs, Fruitland, and Ojo Alamo tops inside and outside 4-1/2" casing. Pull up and reverse circulate with 2 tubing volumes of water.

Plug 6: Perforate 4 holes at 360'. Tie onto 4-1/2" casing and mix and pump 113 sx, or sufficient volume to bring cement to surface, inside and outside 4-1/2" casing.

Remediate location per NMOCD conditions of approval.

Elm Ridge Resources

Pertinent Data Sheet

Well Name: New Mexico State #2
Footage: 950' FSL and 980' FWL
Location: Section 32, T24N, R8W
County: San Juan County, NM
API#: 30-045-24190

Field: Nageezi Gallup

Elevation: 6956' KB

TD: 5435' KB
PBTD: 5435' KB

Completed: 10/15/80

Casing Record:

Hole Size	Casing Size	Wt.	Grade	Depth Set	Cement
12-1/4"	8-5/8"	23#	J-8RT	310'	250 sx (Circ. To Surface)
7-7/8"	4-1/2"	10.5#	STC-R2	5440' DV Tool 4242'	1 st Stg 200sx TOC: 4450' (CBL) 2 nd Stg 300sx TOC: 2580' (CBL)

Primary Cement Squeeze Record: Perfed 5179-80'. Sqz'd with 100sx. Perfed DV tool 4242-43'. Sqz'd with 100sx. Perfed 1 hole 5145'. Spotted 50sx. Sqz'd 12sx through perf. PT held.

Tubing Record: 2-3/8" tubing. No further data available. Tubing is stuck in hole.

Workover Record: 8/91: Pulled AD-1 packer and sqz'd casing failure between 1986' and 2017'.
4/14: Could not pull tubing out of hole. RD and MOL.

Formation Tops:

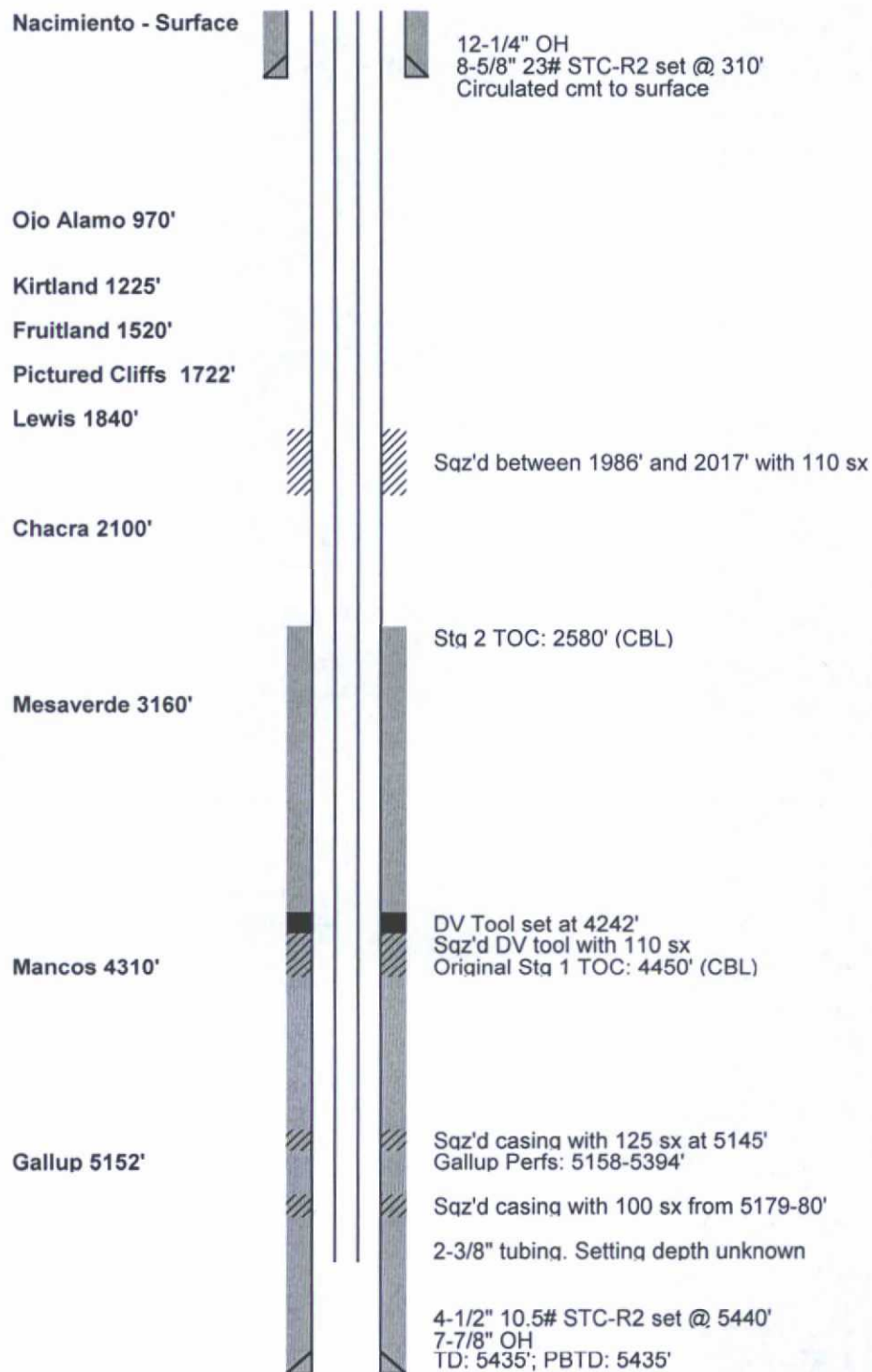
Nacimiento	Surface
Ojo Alamo	970'
Kirtland	1225'
Fruitland	1520'
Pictured Cliffs	1722'
Lewis	1840'
Chacra	2100'
Mesaverde	3160'
Mancos	4310'
Gallup	5152'

Perforations: Gallup: 5158-5289', 5320-5394'

Wellbore Diagram

New Mexico State #2
SW/4 Sec. 32, T24N, R8W
San Juan County Co., NM
API #30-045-24190

Before



Wellbore Diagram

New Mexico State #2
SW/4 Sec. 32, T24N, R8W
San Juan County Co., NM
API #30-045-24190

