

District I
1625 N. French Dr., Hobbs, NM 88240
District II
811 S. First St., Artesia, NM 88210
District III
1000 Rio Brazos Road, Aztec, NM 87410
District IV
1220 S. St. Francis Dr., Santa Fe, NM 87505

State of New Mexico
Energy Minerals and Natural Resources
Department
Oil Conservation Division
1220 South St. Francis Dr.
Santa Fe, NM 87505

OIL CONS. DIV DIST. 3

JUL 11 2016

Form C-144
Revised June 6, 2013

For temporary pits, below-grade tanks, and multi-well fluid management pits, submit to the appropriate NMOC District Office.
For permanent pits submit to the Santa Fe Environmental Bureau office and provide a copy to the appropriate NMOC District Office.

Pit, Below-Grade Tank, or
Proposed Alternative Method Permit or Closure Plan Application

Type of action: ☐ Below grade tank registration
☐ Permit of a pit or proposed alternative method
☒ Closure of a pit, below-grade tank, or proposed alternative method
☐ Modification to an existing permit/or registration
☐ Closure plan only submitted for an existing permitted or non-permitted pit, below-grade tank, or proposed alternative method

Instructions: Please submit one application (Form C-144) per individual pit, below-grade tank or alternative request

Please be advised that approval of this request does not relieve the operator of liability should operations result in pollution of surface water, ground water or the environment. Nor does approval relieve the operator of its responsibility to comply with any other applicable governmental authority's rules, regulations or ordinances.

1.
Operator: Burlington Resources Oil & Gas Company, LP OGRID #: 14538
Address: PO BOX 4289, Farmington, NM 87499
Facility or well name: REESE MESA 101H
API Number: 30-045-26977 OCD Permit Number: _____
U/L or Qtr/Qtr P (SESE) Section 13 Township 32N Range 8W County: San Juan
Center of Proposed Design: Latitude 36.97824 °N Longitude -107.62139 °W NAD: ☐ 1927 ☒ 1983
Surface Owner: ☒ Federal ☐ State ☐ Private ☐ Tribal Trust or Indian Allotment

2.
☐ **Pit:** Subsection F, G or J of 19.15.17.11 NMAC
Temporary: ☐ Drilling ☐ Workover
☐ Permanent ☐ Emergency ☐ Cavitation ☐ P&A ☐ Multi-Well Fluid Management Low Chloride Drilling Fluid ☐ yes ☐ no
☐ Lined ☐ Unlined Liner type: Thickness _____ mil ☐ LLDPE ☐ HDPE ☐ PVC ☐ Other _____
☐ String-Reinforced
Liner Seams: ☐ Welded ☐ Factory ☐ Other _____ Volume: _____ bbl Dimensions: L _____ x W _____ x D _____

Closed Prior to Closure
Plan approval

3.
☒ **Below-grade tank:** Subsection I of 19.15.17.11 NMAC
Volume: 120 bbl Type of fluid: Produced Water
Tank Construction material: Metal
☐ Secondary containment with leak detection ☒ Visible sidewalls, liner, 6-inch lift and automatic overflow shut-off
☐ Visible sidewalls and liner ☐ Visible sidewalls only ☐ Other _____
Liner type: Thickness 45 mil ☐ HDPE ☐ PVC ☒ Other LLDPE

4.
☐ **Alternative Method:**
Submittal of an exception request is required. Exceptions must be submitted to the Santa Fe Environmental Bureau office for consideration of approval.

5.
Fencing: Subsection D of 19.15.17.11 NMAC (Applies to permanent pits, temporary pits, and below-grade tanks)
☐ Chain link, six feet in height, two strands of barbed wire at top (Required if located within 1000 feet of a permanent residence, school, hospital, institution or church)
☐ Four foot height, four strands of barbed wire evenly spaced between one and four feet
☐ Alternate. Please specify _____

6. **Netting:** Subsection E of 19.15.17.11 NMAC (*Applies to permanent pits and permanent open top tanks*)

- ☐ Screen ☐ Netting ☐ Other _____
- ☐ Monthly inspections (If netting or screening is not physically feasible)

7. **Signs:** Subsection C of 19.15.17.11 NMAC

- ☐ 12"x 24", 2" lettering, providing Operator's name, site location, and emergency telephone numbers
- ☐ Signed in compliance with 19.15.16.8 NMAC

8. **Variances and Exceptions:**

Justifications and/or demonstrations of equivalency are required. Please refer to 19.15.17 NMAC for guidance.

Please check a box if one or more of the following is requested, if not leave blank:

- ☐ Variance(s): Requests must be submitted to the appropriate division district for consideration of approval.
- ☐ Exception(s): Requests must be submitted to the Santa Fe Environmental Bureau office for consideration of approval.

9. **Siting Criteria (regarding permitting):** 19.15.17.10 NMAC

Instructions: The applicant must demonstrate compliance for each siting criteria below in the application. Recommendations of acceptable source material are provided below. Siting criteria does not apply to drying pads or above-grade tanks.

General siting

Ground water is less than 25 feet below the bottom of a low chloride temporary pit or below-grade tank.

- ☐ NM Office of the State Engineer - iWATERS database search; ☐ USGS; ☐ Data obtained from nearby wells

☐ Yes ☐ No
☒ NA

Ground water is less than 50 feet below the bottom of a Temporary pit, permanent pit, or Multi-Well Fluid Management pit.

NM Office of the State Engineer - iWATERS database search; USGS; Data obtained from nearby wells

☐ Yes ☐ No
☒ NA

Within incorporated municipal boundaries or within a defined municipal fresh water well field covered under a municipal ordinance adopted pursuant to NMSA 1978, Section 3-27-3, as amended. (**Does not apply to below grade tanks**)

- Written confirmation or verification from the municipality; Written approval obtained from the municipality

☐ Yes ☐ No

Within the area overlying a subsurface mine. (**Does not apply to below grade tanks**)

- Written confirmation or verification or map from the NM EMNRD-Mining and Mineral Division

☐ Yes ☐ No

Within an unstable area. (**Does not apply to below grade tanks**)

- Engineering measures incorporated into the design; NM Bureau of Geology & Mineral Resources; USGS; NM Geological Society; Topographic map

☐ Yes ☐ No

Within a 100-year floodplain. (**Does not apply to below grade tanks**)

- FEMA map

☐ Yes ☐ No

Below Grade Tanks

Within 100 feet of a continuously flowing watercourse, significant watercourse, lake bed, sinkhole, wetland or playa lake (measured from the ordinary high-water mark).

- Topographic map; Visual inspection (certification) of the proposed site

☐ Yes ☒ No

Within 200 horizontal feet of a spring or a fresh water well used for public or livestock consumption;

- NM Office of the State Engineer - iWATERS database search; Visual inspection (certification) of the proposed site

☐ Yes ☒ No

Temporary Pit using Low Chloride Drilling Fluid (maximum chloride content 15,000 mg/liter)

Within 100 feet of a continuously flowing watercourse, or any other significant watercourse or within 200 feet of any lakebed, sinkhole, or playa lake (measured from the ordinary high-water mark). (Applies to low chloride temporary pits.)

- Topographic map; Visual inspection (certification) of the proposed site

☐ Yes ☐ No

Within 300 feet from a occupied permanent residence, school, hospital, institution, or church in existence at the time of initial application.

- Visual inspection (certification) of the proposed site; Aerial photo; Satellite image

☐ Yes ☐ No

Within 200 horizontal feet of a spring or a private, domestic fresh water well used by less than five households for domestic or stock watering purposes, or 300feet of any other fresh water well or spring, in existence at the time of the initial application.

NM Office of the State Engineer - iWATERS database search; Visual inspection (certification) of the proposed site

☐ Yes ☐ No

Within 100 feet of a wetland.

- US Fish and Wildlife Wetland Identification map; Topographic map; Visual inspection (certification) of the proposed site

☐ Yes ☐ No

Temporary Pit Non-low chloride drilling fluid

Within 300 feet of a continuously flowing watercourse, or any other significant watercourse, or within 200 feet of any lakebed, sinkhole, or playa lake (measured from the ordinary high-water mark).

- Topographic map; Visual inspection (certification) of the proposed site

☐ Yes ☐ No

Within 300 feet from a permanent residence, school, hospital, institution, or church in existence at the time of initial application.

- Visual inspection (certification) of the proposed site; Aerial photo; Satellite image

☐ Yes ☐ No

Within 500 horizontal feet of a spring or a private, domestic fresh water well used by less than five households for domestic or stock watering purposes, or 1000 feet of any other fresh water well or spring, in the existence at the time of the initial application;

- NM Office of the State Engineer - iWATERS database search; Visual inspection (certification) of the proposed site

☐ Yes ☐ No

Within 300 feet of a wetland.

- US Fish and Wildlife Wetland Identification map; Topographic map; Visual inspection (certification) of the proposed site

☐ Yes ☐ No

Permanent Pit or Multi-Well Fluid Management Pit

Within 300 feet of a continuously flowing watercourse, or 200 feet of any other significant watercourse, or lakebed, sinkhole, or playa lake (measured from the ordinary high-water mark).

- Topographic map; Visual inspection (certification) of the proposed site

☐ Yes ☐ No

Within 1000 feet from a permanent residence, school, hospital, institution, or church in existence at the time of initial application.

- Visual inspection (certification) of the proposed site; Aerial photo; Satellite image

☐ Yes ☐ No

Within 500 horizontal feet of a spring or a fresh water well used for domestic or stock watering purposes, in existence at the time of initial application.

- NM Office of the State Engineer - iWATERS database search; Visual inspection (certification) of the proposed site

☐ Yes ☐ No

Within 500 feet of a wetland.

- US Fish and Wildlife Wetland Identification map; Topographic map; Visual inspection (certification) of the proposed site

☐ Yes ☐ No

10.

Temporary Pits, Emergency Pits, and Below-grade Tanks Permit Application Attachment Checklist: Subsection B of 19.15.17.9 NMAC

Instructions: Each of the following items must be attached to the application. Please indicate, by a check mark in the box, that the documents are attached.

- ☐ Hydrogeologic Report (Below-grade Tanks) - based upon the requirements of Paragraph (4) of Subsection B of 19.15.17.9 NMAC
- ☐ Hydrogeologic Data (Temporary and Emergency Pits) - based upon the requirements of Paragraph (2) of Subsection B of 19.15.17.9 NMAC
- ☐ Siting Criteria Compliance Demonstrations - based upon the appropriate requirements of 19.15.17.10 NMAC
- ☐ Design Plan - based upon the appropriate requirements of 19.15.17.11 NMAC
- ☐ Operating and Maintenance Plan - based upon the appropriate requirements of 19.15.17.12 NMAC
- ☐ Closure Plan (Please complete Boxes 14 through 18, if applicable) - based upon the appropriate requirements of Subsection C of 19.15.17.9 NMAC and 19.15.17.13 NMAC

☐ Previously Approved Design (attach copy of design) API Number: _____ or Permit Number: _____

11.

Multi-Well Fluid Management Pit Checklist: Subsection B of 19.15.17.9 NMAC

Instructions: Each of the following items must be attached to the application. Please indicate, by a check mark in the box, that the documents are attached.

- ☐ Design Plan - based upon the appropriate requirements of 19.15.17.11 NMAC
- ☐ Operating and Maintenance Plan - based upon the appropriate requirements of 19.15.17.12 NMAC
- ☐ A List of wells with approved application for permit to drill associated with the pit.
- ☐ Closure Plan (Please complete Boxes 14 through 18, if applicable) - based upon the appropriate requirements of Subsection C of 19.15.17.9 NMAC and 19.15.17.13 NMAC
- ☐ Hydrogeologic Data - based upon the requirements of Paragraph (4) of Subsection B of 19.15.17.9 NMAC
- ☐ Siting Criteria Compliance Demonstrations - based upon the appropriate requirements of 19.15.17.10 NMAC

☐ Previously Approved Design (attach copy of design) API Number: _____ or Permit Number: _____

12.

Permanent Pits Permit Application Checklist: Subsection B of 19.15.17.9 NMAC

Instructions: Each of the following items must be attached to the application. Please indicate, by a check mark in the box, that the documents are attached.

- ☐ Hydrogeologic Report - based upon the requirements of Paragraph (1) of Subsection B of 19.15.17.9 NMAC
☐ Siting Criteria Compliance Demonstrations - based upon the appropriate requirements of 19.15.17.10 NMAC
☐ Climatological Factors Assessment
☐ Certified Engineering Design Plans - based upon the appropriate requirements of 19.15.17.11 NMAC
☐ Dike Protection and Structural Integrity Design - based upon the appropriate requirements of 19.15.17.11 NMAC
☐ Leak Detection Design - based upon the appropriate requirements of 19.15.17.11 NMAC
☐ Liner Specifications and Compatibility Assessment - based upon the appropriate requirements of 19.15.17.11 NMAC
☐ Quality Control/Quality Assurance Construction and Installation Plan
☐ Operating and Maintenance Plan - based upon the appropriate requirements of 19.15.17.12 NMAC
☐ Freeboard and Overtopping Prevention Plan - based upon the appropriate requirements of 19.15.17.11 NMAC
☐ Nuisance or Hazardous Odors, including H₂S, Prevention Plan
☐ Emergency Response Plan
☐ Oil Field Waste Stream Characterization
☐ Monitoring and Inspection Plan
☐ Erosion Control Plan
☐ Closure Plan - based upon the appropriate requirements of Subsection C of 19.15.17.9 NMAC and 19.15.17.13 NMAC

13.

Proposed Closure: 19.15.17.13 NMAC

Instructions: Please complete the applicable boxes, Boxes 14 through 18, in regards to the proposed closure plan.

- Type: ☐ Drilling ☐ Workover ☐ Emergency ☐ Cavitation ☐ P&A ☐ Permanent Pit ☐ Below-grade Tank ☐ Multi-well Fluid Management Pit
☐ Alternative
- Proposed Closure Method: ☒ Waste Excavation and Removal
☐ Waste Removal (Closed-loop systems only)
☐ On-site Closure Method (Only for temporary pits and closed-loop systems)
 ☐ In-place Burial ☐ On-site Trench Burial
☐ Alternative Closure Method

14.

Waste Excavation and Removal Closure Plan Checklist: (19.15.17.13 NMAC) **Instructions:** Each of the following items must be attached to the closure plan. Please indicate, by a check mark in the box, that the documents are attached.

- ☒ Protocols and Procedures - based upon the appropriate requirements of 19.15.17.13 NMAC
☒ Confirmation Sampling Plan (if applicable) - based upon the appropriate requirements of Subsection C of 19.15.17.13 NMAC
☒ Disposal Facility Name and Permit Number (for liquids, drilling fluids and drill cuttings)
☒ Soil Backfill and Cover Design Specifications - based upon the appropriate requirements of Subsection H of 19.15.17.13 NMAC
☒ Re-vegetation Plan - based upon the appropriate requirements of Subsection H of 19.15.17.13 NMAC
☒ Site Reclamation Plan - based upon the appropriate requirements of Subsection H of 19.15.17.13 NMAC

15.

Siting Criteria (regarding on-site closure methods only): 19.15.17.10 NMAC

Instructions: Each siting criteria requires a demonstration of compliance in the closure plan. Recommendations of acceptable source material are provided below. Requests regarding changes to certain siting criteria require justifications and/or demonstrations of equivalency. Please refer to 19.15.17.10 NMAC for guidance.

Ground water is less than 25 feet below the bottom of the buried waste. - NM Office of the State Engineer - iWATERS database search; USGS; Data obtained from nearby wells	<input type="checkbox"/> Yes <input type="checkbox"/> No <input type="checkbox"/> NA
Ground water is between 25-50 feet below the bottom of the buried waste - NM Office of the State Engineer - iWATERS database search; USGS; Data obtained from nearby wells	<input type="checkbox"/> Yes <input type="checkbox"/> No <input type="checkbox"/> NA
Ground water is more than 100 feet below the bottom of the buried waste. - NM Office of the State Engineer - iWATERS database search; USGS; Data obtained from nearby wells	<input type="checkbox"/> Yes <input type="checkbox"/> No <input type="checkbox"/> NA
Within 100 feet of a continuously flowing watercourse, or 200 feet of any other significant watercourse, lakebed, sinkhole, or playa lake (measured from the ordinary high-water mark). - Topographic map; Visual inspection (certification) of the proposed site	<input type="checkbox"/> Yes <input type="checkbox"/> No
Within 300 feet from a permanent residence, school, hospital, institution, or church in existence at the time of initial application. - Visual inspection (certification) of the proposed site; Aerial photo; Satellite image	<input type="checkbox"/> Yes <input type="checkbox"/> No
Within 300 horizontal feet of a private, domestic fresh water well or spring used for domestic or stock watering purposes, in existence at the time of initial application. - NM Office of the State Engineer - iWATERS database; Visual inspection (certification) of the proposed site	<input type="checkbox"/> Yes <input type="checkbox"/> No
Written confirmation or verification from the municipality; Written approval obtained from the municipality	<input type="checkbox"/> Yes <input type="checkbox"/> No
Within 300 feet of a wetland. US Fish and Wildlife Wetland Identification map; Topographic map; Visual inspection (certification) of the proposed site	<input type="checkbox"/> Yes <input type="checkbox"/> No
Within incorporated municipal boundaries or within a defined municipal fresh water well field covered under a municipal ordinance	<input type="checkbox"/> Yes <input type="checkbox"/> No

adopted pursuant to NMSA 1978, Section 3-27-3, as amended.

- Written confirmation or verification from the municipality; Written approval obtained from the municipality

☐ Yes ☐ No

Within the area overlying a subsurface mine.

- Written confirmation or verification or map from the NM EMNRD-Mining and Mineral Division

☐ Yes ☐ No

Within an unstable area.

- Engineering measures incorporated into the design; NM Bureau of Geology & Mineral Resources; USGS; NM Geological Society; Topographic map

☐ Yes ☐ No

Within a 100-year floodplain.

- FEMA map

☐ Yes ☐ No

16.

On-Site Closure Plan Checklist: (19.15.17.13 NMAC) *Instructions: Each of the following items must be attached to the closure plan. Please indicate, by a check mark in the box, that the documents are attached.*

- ☐ Siting Criteria Compliance Demonstrations - based upon the appropriate requirements of 19.15.17.10 NMAC
- ☐ Proof of Surface Owner Notice - based upon the appropriate requirements of Subsection E of 19.15.17.13 NMAC
- ☐ Construction/Design Plan of Burial Trench (if applicable) based upon the appropriate requirements of Subsection K of 19.15.17.11 NMAC
- ☐ Construction/Design Plan of Temporary Pit (for in-place burial of a drying pad) - based upon the appropriate requirements of 19.15.17.11 NMAC
- ☐ Protocols and Procedures - based upon the appropriate requirements of 19.15.17.13 NMAC
- ☐ Confirmation Sampling Plan (if applicable) - based upon the appropriate requirements of 19.15.17.13 NMAC
- ☐ Waste Material Sampling Plan - based upon the appropriate requirements of 19.15.17.13 NMAC
- ☐ Disposal Facility Name and Permit Number (for liquids, drilling fluids and drill cuttings or in case on-site closure standards cannot be achieved)
- ☐ Soil Cover Design - based upon the appropriate requirements of Subsection H of 19.15.17.13 NMAC
- ☐ Re-vegetation Plan - based upon the appropriate requirements of Subsection H of 19.15.17.13 NMAC
- ☐ Site Reclamation Plan - based upon the appropriate requirements of Subsection H of 19.15.17.13 NMAC

17.

Operator Application Certification:

I hereby certify that the information submitted with this application is true, accurate and complete to the best of my knowledge and belief.

Name (Print): _____ Title: _____

Signature: _____ Date: _____

e-mail address: _____ Telephone: _____

18.

OCD Approval: ☐ Permit Application (including closure plan) ☒ Closure Plan (only) ☐ OCD Conditions (see attachment)

OCD Representative Signature: Carissa [Signature] Approval Date: 7/29/2016

Title: Environmental Specialist OCD Permit Number: _____

19.

Closure Report (required within 60 days of closure completion): 19.15.17.13 NMAC

Instructions: Operators are required to obtain an approved closure plan prior to implementing any closure activities and submitting the closure report. The closure report is required to be submitted to the division within 60 days of the completion of the closure activities. Please do not complete this section of the form until an approved closure plan has been obtained and the closure activities have been completed.

☒ Closure Completion Date: 4/7/2016

20.

Closure Method:

- ☒ Waste Excavation and Removal ☐ On-Site Closure Method ☐ Alternative Closure Method ☐ Waste Removal (Closed-loop systems only)
- ☐ If different from approved plan, please explain.

21.

Closure Report Attachment Checklist: *Instructions: Each of the following items must be attached to the closure report. Please indicate, by a check mark in the box, that the documents are attached.*

- ☒ Proof of Closure Notice (surface owner and division)
- ☐ Proof of Deed Notice (required for on-site closure for private land only)
- ☐ Plot Plan (for on-site closures and temporary pits)
- ☒ Confirmation Sampling Analytical Results (if applicable)
- ☐ Waste Material Sampling Analytical Results (required for on-site closure)
- ☐ Disposal Facility Name and Permit Number
- ☒ Soil Backfilling and Cover Installation
- ☒ Re-vegetation Application Rates and Seeding Technique
- ☒ Site Reclamation (Photo Documentation)

On-site Closure Location: Latitude °N Longitude °W NAD: ☐ 1927 ☐ 1983

Operator Closure Certification:

I hereby certify that the information and attachments submitted with this closure report is true, accurate and complete to the best of my knowledge and belief. I also certify that the closure complies with all applicable closure requirements and conditions specified in the approved closure plan.

Name (Print) Crystal Walker Title: Regulatory Coordinator

Signature:  Date: 7/11/2016

e-mail address: crystal.walker@cop.com Telephone: (505) 326-9837

Burlington Resources Oil & Gas Company, LP
San Juan Basin
Below Grade Tank Closure Report

Lease Name: Reese Mesa 101H

API No.: 30-045-26977

In accordance with Rule 19.15.17.13 NMAC the following information describes the closure of the below-grade tank referenced above. All proper documentation regarding closure activities is being included with the C-144.

General Plan:

1. BR shall close a below-grade tank within 60 days of cessation of operations per Subsection G.4 of 19.15.17.13 NMAC. This will include a) below-grade tanks that do not meet the requirements of Paragraphs (1) through (4) of Subsection I of 19.15.17.11 NMAC or is not included in Paragraph (5) of Subsection I of 19.15.17.11 NMAC within five years, if not retrofitted to comply with Paragraphs (1) through (4) of Subsection I of 19.15.17.11 NMAC; b) an earlier date that the division requires because of imminent danger to fresh water, public health or the environment. For any closure, BR will file the C144 Closure Report as required.

The below-grade tank referenced above was permitted and closed within 60 days of cessation of the below-grade tanks operation.

2. BR shall remove liquids and sludge from a below-grade tank prior to implementing a closure method and shall dispose of the liquids and sludge in a division-approved facility. The facilities to be used will be Basin Disposal (Permit #NM-01-005), JFJ Landfarm % Industrial Ecosystem Inc. (Permit # NM-01-0010B) and Envirotech Land Farm (Permit #NM-01-011). The liner after being cleaned well (Subsection D, Paragraph 1, Subparagraph (m) of 19.15.9.712 NMAC) will be disposed of at the San Juan County Regional Landfill located on CR 3100.

All recovered liquids were disposed of at Basin Disposal (Permit #NM-01-005) and any sludge or soil required to be removed to facilitate closure was hauled to Envirotech Land Farm (Permit #NM-01-011) and JFJ Landfarm % IEI (Permit #NM-01-0010B). The liner was cleaned per Subsection D, Paragraph 1, Subparagraph (m) of 19.15.9.712 NMAC was disposed of at the San Juan County Regional Landfill located on CR 3100.

3. BR will receive prior approval to remove the below-grade tank and dispose of it in a division-approved facility or recycle, reuse, or reclaim it in a manner that the appropriate division district office approves.

The below-grade tank was disposed of in a division-approved manner.

4. If there is any on-site equipment associated with a below-grade tank, then BR shall remove the equipment, unless the equipment is required for some other purpose.

All on-site equipment associated with the below-grade tank was removed.

5. BR will test the soils beneath the below-grade tank to determine whether a release has occurred. BR shall collect, at a minimum, a five point, composite sample; collect individual grab samples from any area that is wet, discolored or showing other evidence of a release; and analyzed for the constituents listed in Table I of 19.15.17.13 NMAC. COPC shall notify the division of its results on form C-141.

A five point composite sample was taken of the below-grade tank using sampling tools and all samples tested per Subsection B of 19.15.17.1 3(B)(1)(b). (Sample results attached). Form C-141 is attached.

Components	Tests Method	Limit (mg/kg)
Benzene	EPA SW-846 8021B or 8260B	0.2
BTEX	EPA SW-846 8021B or 8260B	50
TPH	EPA SW-846 418.1	100
Chlorides	EPA 300.0	250

6. If BR or the division determines that a release has occurred, then BR shall comply with 19.15.3.116 NMAC and 19.15.1.19 NMAC, as appropriate.

A release was not determined for the above referenced well.

7. If the sampling program demonstrates that a release has not occurred or that any release does not exceed the concentrations specified in Table I of 19.15.17.13 NMAC, then BR shall backfill the excavation with compacted, non-waste containing, earthen material; construct a division-prescribed soil cover; recontour and re-vegetate the site.

The below-grade tank area passed all requirements of Paragraph (4) of Subsection E of 19.15.17.13 NMAC and was backfilled with compacted, non-waste containing, earthen material.

8. Notice of Closure will be given prior to closure to the Aztec Division office between 72 hours and one week via email or verbally. The notification of closure will include the following:
- Operator's name
 - Location by Unit Letter, Section, Township, and Range. Well name and API number.

Notification is attached.

9. The surface owner shall be notified of BR's closing of the below-grade tank 72 hours, but not more than one week, prior to closure as per the approved closure plan via certified mail, return receipt requested.

The closure process notification to the landowner was sent via email. (See Attached) (Well located on Federal Land, certified mail is not required for Federal Land per BLM/OCD MOU.)

10. Re-contouring of location will match fit, shape, line, form and texture of the surrounding. Re-shaping will include drainage control, prevent ponding, and prevent erosion. Natural drainages will be unimpeded and water bars and/or silt traps will be place in areas where needed to prevent erosion on a large scale. Final re-contour shall have a uniform appearance with smooth surface, fitting the natural landscape.

The below-grade tank area was re-contoured to match fit, shape, line, form and texture of the surrounding area. Re-shaping including drainage control, to prevent ponding and erosion. Natural drainages were unimpeded and water bars and/or silt traps were placed in areas where needed to prevent erosion on a large scale. Final recontour has a uniform appearance with smooth surface, fitting the natural landscape.

11. BR shall seed the disturbed areas the first favorable growing season following closure of a below-grade tank. Seeding will be accomplished via drilling on the contour whenever practical or by other division-approved methods. BLM stipulated seed mixes will be used on federally regulated lands and division-approved seed mixtures (administratively approved if required) will be utilized on all State or private lands. A uniform vegetative cover has been established that reflects a life-form ratio of plus or minus fifty percent (50%) of pre-disturbance levels and a total percent plant cover of at least seventy percent (70%) of pre-disturbance levels, excluding noxious weeds. If alternate seed mix is required by the state, private owner or tribe, it will be implemented with administrative approval if needed. COPC will repeat seeding or planting will be continued until successful vegetative growth occurs.

Provision 13 was accomplished through complying with BLM seeding requirements as allowed by the BLM/OCD MOU.

12. A minimum of four feet of cover shall be achieved and the cover shall include one foot of suitable material, with chloride concentrations less than 600 mg/kg as analyzed by EPA Method 300.0, to establish vegetation at the site, or the background thickness of topsoil, whichever is greater.

The below-grade tank area was backfilled and more than four feet of cover was achieved and the cover included one foot of suitable material to establish vegetation at the site.

13. All closure activities will include proper documentation and be available for review upon request and will be submitted to OCD within 60 days of closure of the below-grade tank. Closure report will be filed on C-144 and incorporate the following:
 - Soil Backfilling and Cover Installation **(See Report)**
 - Re-vegetation application rates and seeding techniques **(See Report)**
 - Photo documentation of the site reclamation **(Included as an attachment)**
 - Confirmation Sampling Results **(Included as an attachment)**
 - Proof of closure notice **(Included as an attachment)**

Walker, Crystal

From: Roberts, Kelly G
Sent: Monday, April 04, 2016 11:00 AM
To: Cory Smith; Fields, Vanessa, EMNRD; Flaniken, Mike (Mike_Flaniken@blm.gov); Katherina Diemer (kdiemer@blm.gov)
Cc: Farrell, Juanita R; GRP:SJBU Regulatory; Jones, Lisa; SJBU E-Team
Subject: 72 Hour BGT Closure Notification

Subject: 72 Hour BGT Closure Notification

Anticipated Start Date: Thursday April 7, 2016

The subject well has a below-grade tank that will begin the closure process between 72 hours and one week from this notification. Please contact me at any time if you have any questions or concerns.

Well Name: REESE MESA 101H

API#: 30-045-26977

Location: Unit P (SE/SE), Section 13, T 32N, R 8W, San Juan County, New Mexico

Footages: 1100' FSL & 940' FEL

Operator: Burlington Resources Oil & Gas Co. LP

Surface Owner: BLM (NM-6892)

Kelly G. Roberts

ConocoPhillips Co.

Rockies Business Unit

San Juan Asset

Regulatory Technician

505-326-9775

505-330-7921

District I
1625 N. French Dr., Hobbs, NM 88240
District II
1301 W. Grand Avenue, Artesia, NM 88210
District III
1000 Rio Brazos Road, Aztec, NM 87410
District IV
1220 S. St. Francis Dr., Santa Fe, NM 87505

State of New Mexico
Energy Minerals and Natural Resources

Oil Conservation Division
1220 South St. Francis Dr.
Santa Fe, NM 87505

Form C-141
Revised August 8, 2011

Submit 1 Copy to appropriate District Office to
accordance with 19.15.29 NMAC.

Release Notification and Corrective Action

OPERATOR

☐ Initial Report ☒ Final Report

Name of Company	Burlington Resources Oil & Gas Company	Contact	Crystal Walker
Address	3401 East 30 th St, Farmington, NM	Telephone No.	(505) 326-9837
Facility Name	Reese Mesa 101H	Facility Type	Gas Well
Surface Owner	BLM	Mineral Owner	BLM (NM-06892)
		API No.	30-045-26977

LOCATION OF RELEASE


Unit Letter	Section	Township	Range	Feet from the	North/South Line	Feet from the	East/West Line	County
P	13	32N	8W	1100	South	940	East	San Juan

Latitude 36.97824 Longitude -107.62139

NATURE OF RELEASE

Type of Release	Volume of Release	Volume Recovered
Source of Release	Date and Hour of Occurrence	Date and Hour of Discovery
Was Immediate Notice Given? <input type="checkbox"/> Yes <input type="checkbox"/> No <input checked="" type="checkbox"/> Not Required	If YES, To Whom?	
By Whom?	Date and Hour	
Was a Watercourse Reached? <input type="checkbox"/> Yes <input checked="" type="checkbox"/> No	If YES, Volume Impacting the Watercourse.	
If a Watercourse was Impacted, Describe Fully.* N/A		
Describe Cause of Problem and Remedial Action Taken.* No release was encountered during the BGT Closure.		
Describe Area Affected and Cleanup Action Taken.* N/A		

I hereby certify that the information given above is true and complete to the best of my knowledge and understand that pursuant to NMOCD rules and regulations all operators are required to report and/or file certain release notifications and perform corrective actions for releases which may endanger public health or the environment. The acceptance of a C-141 report by the NMOCD marked as "Final Report" does not relieve the operator of liability should their operations have failed to adequately investigate and remediate contamination that pose a threat to ground water, surface water, human health or the environment. In addition, NMOCD acceptance of a C-141 report does not relieve the operator of responsibility for compliance with any other federal, state, or local laws and/or regulations.

Signature: 	<u>OIL CONSERVATION DIVISION</u>	
Printed Name: Crystal Walker	Approved by Environmental Specialist:	
Title: Regulatory Coordinator	Approval Date:	Expiration Date:
E-mail Address: crystal.walker@cop.com	Conditions of Approval:	Attached <input type="checkbox"/>
Date: 7/11/2016 Phone: (505) 326-9837		

* Attach Additional Sheets If Necessary



April 28, 2016

Lisa Hunter
ConocoPhillips
San Juan Business Unit
(505) 326-9786

Via electronic mail to: SJBUE-Team@ConocoPhillips.com

**RE: Below Grade Tank Closure Report
Reese Mesa 101H
San Juan County, New Mexico**

Dear Ms. Hunter:

Animas Environmental Services, LLC (AES) is pleased to provide the final report associated with the below grade tank (BGT) closure at ConocoPhillips (COPC) Reese Mesa 101H, located in San Juan County, New Mexico. Tank removal was completed by COPC contractors while AES was on site.

1.0 Site Information

1.1 Location

Site Name – Reese Mesa 101H

Legal Description – SE¼ SE¼, Section 13, T32N, R8W, San Juan County, New Mexico

Well Latitude/Longitude – N36.97806 and W107.62143, respectively

BGT Latitude/Longitude – N36.97824 and W107.62139, respectively

Land Jurisdiction – Bureau of Land Management (BLM)

Figure 1. Topographic Site Location Map

Figure 2. Aerial Site Map, April 2016

1.2 NMOCD Ranking

In accordance with the New Mexico Oil Conservation Division (NMOCD) *Guidelines for Remediation of Leaks, Spills, and Releases* (August 1993), the location was given a ranking score of 0 based on the following factors:

604 W. Piñon St.
Farmington, NM 87401
505-564-2281

1911 Main, Ste 200
Durango, CO 81301
970-403-3084

- **Depth to Groundwater:** A cathodic report form dated May 1991 reported the depth to groundwater at 310 feet below ground surface (bgs). (0 points)
- **Wellhead Protection Area:** The tank location is not within a wellhead protection area. (0 points)
- **Distance to Surface Water Body:** A small unnamed wash which discharges to Garcia Canyon Wash is located approximately 1,700 feet south of the location. (0 points)

1.3 BGT Closure Assessment

AES was initially contacted by Lisa Hunter of COPC on April 4, 2016, and on April 7, 2016, Sam Glasses of AES mobilized to the location. AES personnel collected one 5-point soil sample composited from four perimeter samples and one center sample of the BGT footprint from below the BGT liner.

2.0 Soil Sampling

On April 7, 2016, AES personnel conducted field sampling and collected one 5-point composite (BGT SC-1) from below the BGT. Soil was collected from approximately 0.5 feet below the former BGT. Soil sample BGT SC-1 was field screened for volatile organic compounds (VOCs), total petroleum hydrocarbon (TPH), and chloride, and was submitted for confirmation laboratory analysis. Soil sample locations are included on Figure 2.

2.1 Field Sampling

2.1.1 Volatile Organic Compounds

A portion of BGT SC-1 was utilized for field screening of VOC vapors with a photo-ionization detector (PID) organic vapor meter (OVM). Before beginning field screening, the PID-OVM was first calibrated with 100 parts per million (ppm) isobutylene gas.

2.1.2 Total Petroleum Hydrocarbons

Soil sample BGT SC-1 was also analyzed in the field for TPH per U.S. Environmental Protection Agency (USEPA) Method 418.1 using a Buck Scientific Model HC-404 Total Hydrocarbon Analyzer Infrared Spectrometer (Buck). A 3-point calibration was completed prior to conducting soil analyses. Field analytical protocol followed AES's *Standard Operating Procedure: Field Analysis Total Petroleum Hydrocarbons per EPA Method 418.1*.

2.1.3 Chlorides

Soil sample BGT SC-1 was field screened for chlorides using Chloride Drop Count Titration with silver nitrate. Sampling and analysis methods followed procedures provided by Hach Company.

2.2 Laboratory Analyses

The composite soil sample BGT SC-1 collected for laboratory analysis was placed into a new, clean, laboratory-supplied container, which was then labeled, placed on ice, and logged onto a sample chain of custody record. The sample was maintained on ice until delivery to the analytical laboratory, Hall Environmental Analysis Laboratory (Hall), in Albuquerque, New Mexico. Soil sample BGT SC-1 was laboratory analyzed for:

- Benzene, toluene, ethylbenzene, and xylene (BTEX) per USEPA Method 8021B;
- TPH per USEPA Method 418.1; and
- Chloride per USEPA Method 300.0.

2.3 Field and Laboratory Analytical Results

Field screening readings for VOCs via OVM were measured at 3.1 ppm in BGT SC-1. Field TPH concentrations were reported at 22.1 mg/kg. The field chloride concentration was 40 mg/kg. Field sampling results are summarized in Table 1 and presented on Figure 2. The AES Field Sampling Report is attached.

Table 1. Soil Field VOCs, TPH, and Chloride Results
 Reese Mesa 101H BGT Closure, April 2016

<i>Sample ID</i>	<i>Date Sampled</i>	<i>Depth below BGT (ft)</i>	<i>VOCs OVM Reading (ppm)</i>	<i>Field TPH (mg/kg)</i>	<i>Field Chlorides (mg/kg)</i>
<i>NMOCD Action Level (NMAC 19.15.17.13E)</i>			--	100	250
BGT SC-1	4/7/16	0.5	3.1	22.1	40

Laboratory analytical results reported benzene and total BTEX concentrations in BGT SC-1 as less than 0.024 mg/kg and 0.217 mg/kg, respectively. TPH concentrations were reported at less than 19 mg/kg. The laboratory chloride concentration was reported below the laboratory detection limit of 30 mg/kg. Laboratory analytical results are summarized in Table 2 and included on Figure 2. The laboratory analytical report is attached.

Table 2. Soil Laboratory Analytical Results
Reese Mesa 101H BGT Closure, April 2016

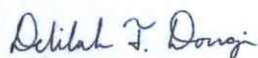
Sample ID	Date Sampled	Depth (ft)	Benzene (mg/kg)	Total BTEX (mg/kg)	TPH (mg/kg)	Chlorides (mg/kg)
NMOCD Action Level (NMAC 19.15.17.13E)			0.2	50	100	250
BGT SC-1	4/7/16	0.5	<0.024	<0.217	<19	<30

3.0 Conclusions and Recommendations

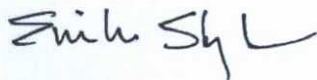
NMOCD action levels for BGT closures are specified in New Mexico Administrative Code (NMAC) 19.15.17.13E. Field TPH concentrations in BGT SC-1 were below the NMOCD action level of 100 mg/kg, with a concentration reported at 22.1 mg/kg. Benzene and total BTEX concentrations were below the NMOCD action levels of 0.2 mg/kg and 50 mg/kg, respectively. Chloride concentrations in BGT SC-1 were below the NMOCD action level of 250 mg/kg. Based on field sampling and laboratory analytical results for benzene, total BTEX, TPH, and chlorides, no further work is recommended at Reese Mesa 101H.

If you have any questions about this report or site conditions, please do not hesitate to contact Emilee Skyles at (505) 564-2281.

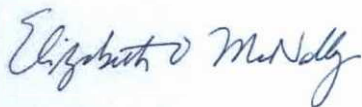
Sincerely,



Delilah T. Dougi
Geologist



Emilee Skyles
Geologist/Project Lead



Elizabeth McNally, P.E.

Attachments:

**Figure 1. Topographic Site Location Map
Figure 2. Aerial Site Map, April 2016
AES Field Sampling Report 040716
Hall Analytical Report 1604357**

R:\Animas 2000\Dropbox (Animas Environmental)\0000 AES Server Client Projects Dropbox\2016 Client Projects\ConocoPhillips\Reese Mesa 101H\COPC Reese Mesa 101H BGT Closure Report 042816.docx

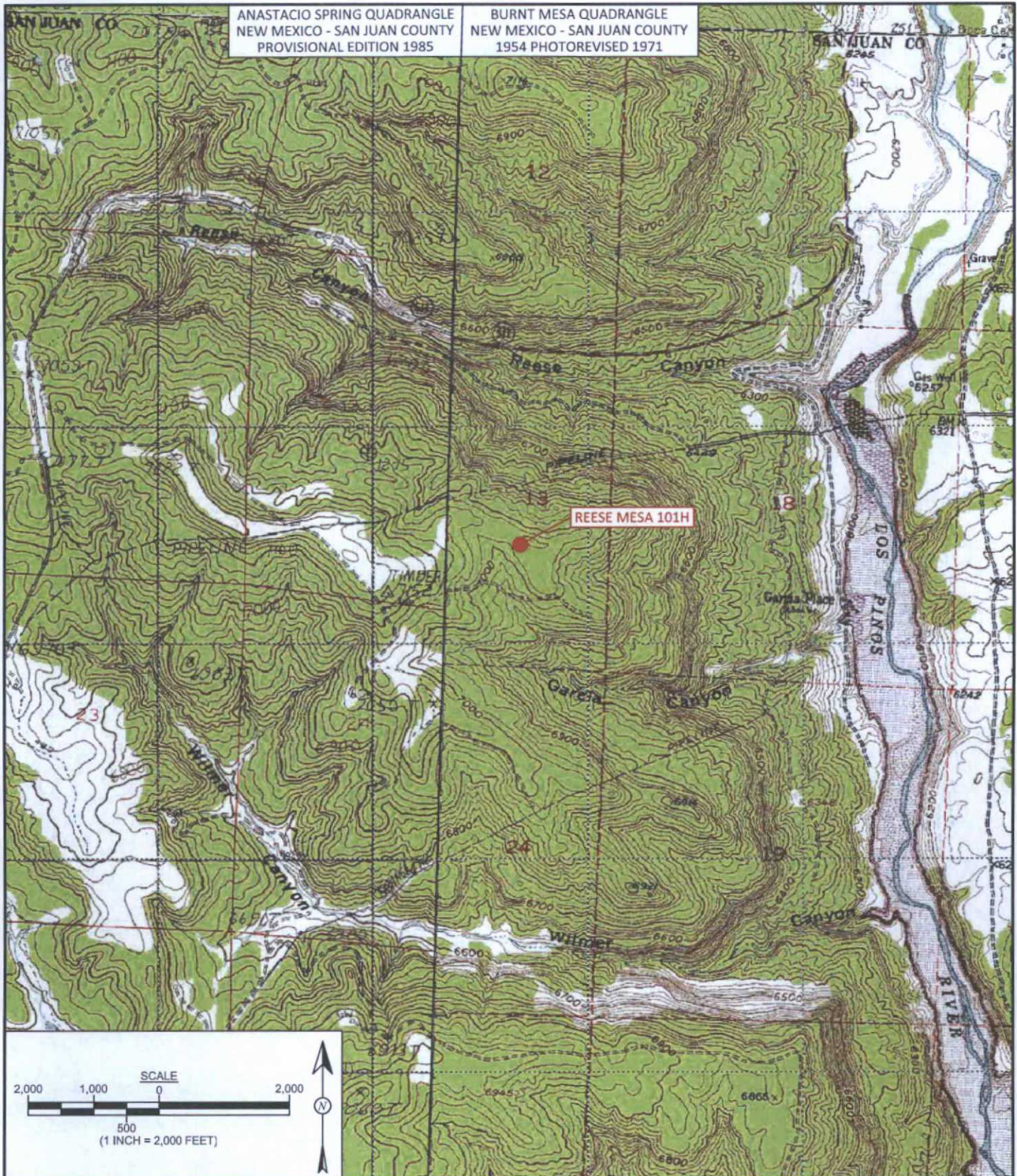


FIGURE 1

TOPOGRAPHIC SITE LOCATION MAP

ConocoPhillips
 REESE MESA 101H
 SE¼ SE¼, SECTION 13, T32N, R8W
 SAN JUAN COUNTY, NEW MEXICO
 N36.97806, W107.62143



**animas
 environmental
 services**
 Farmington, NM • Durango, CO
animasenvironmental.com

DRAWN BY: C. Lameman	DATE DRAWN: March 25, 2016
REVISIONS BY: S. Glasses	DATE REVISED: April 7, 2016
CHECKED BY: E. Skyles	DATE CHECKED: April 7, 2016
APPROVED BY: E. McNally	DATE APPROVED: April 7, 2016

LEGEND

● SAMPLE LOCATIONS

Field Sampling Results

Sample ID	Date	Depth (ft)	OVM-PID (ppm)	TPH (mg/kg)	Chlorides (mg/kg)
NMOCD ACTION LEVEL			--	100	250
BGT SC-1	4/7/16	0.5	3.1	22.1	40

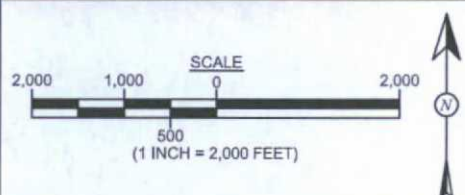
BGT SC-1 IS A 5-POINT COMPOSITE SAMPLE.

Laboratory Analytical Results

Sample ID	Date	Depth (ft)	Benzene (mg/kg)	Total BTEX (mg/kg)	TPH (mg/kg)	Chlorides (mg/kg)
NMOCD ACTION LEVEL			0.2	50	100	250
BGT SC-1	4/7/16	0.5	<0.024	<0.217	<19	<30

SAMPLE WAS ANALYZED PER USEPA METHOD 8021B, 418.1 AND 300.0.

REESE MESA 101H WELL MONUMENT



AERIAL SOURCE: © 2015 GOOGLE EARTH PRO, AERIAL DATE: MAY 2, 2013

FIGURE 2

**AERIAL SITE MAP
BELOW GRADE TANK CLOSURE
APRIL 2016**
ConocoPhillips
REESE MESA 101H
SE¼, SE¼, SECTION 13, T32N, R8W
SAN JUAN COUNTY, NEW MEXICO
N36.97806, W107.62143



**animas
environmental
services**
Farmington, NM • Durango, CO
animasenvironmental.com

DRAWN BY:
C. Lameman

DATE DRAWN:
March 25, 2016

REVISIONS BY:
D. Dougi

DATE REVISED:
April 28, 2016

CHECKED BY:
E. Skyles

DATE CHECKED:
April 28, 2016

APPROVED BY:
E. McNally

DATE APPROVED:
April 28, 2016

AES Field Sampling Report

Animas Environmental Services, LLC



Client: ConocoPhillips

Project Location: Reese Mesa 101H

Date: 4/7/2016

Matrix: Soil

Sample ID	Collection Date	Collection Time	Sample Location	OVM (ppm)	Field Chloride (mg/kg)	Field TPH* (mg/kg)	Field TPH Analysis Time	TPH PQL (mg/kg)	DF	TPH Analysts Initials
BGT SC-1	4/7/2016	10:32	Composite	3.1	40	22.10	10:50	20.0	1	SG

DF Dilution Factor

NA Not Analyzed

PQL Practical Quantitation Limit

**Field TPH concentrations recorded may be below PQL.*

Field Chloride - Quantab Chloride Titrators or Drop Count

Titration with Silver Nitrate

Total Petroleum Hydrocarbons - USEPA 418.1

Analyst:



Hall Environmental Analysis Laboratory
4901 Hawkins NE
Albuquerque, NM 87109
TEL: 505-345-3975 FAX: 505-345-4107
Website: www.hallenvironmental.com

April 19, 2016

Emilee Skyles
Animas Environmental
604 Pinon Street
Farmington, NM 87401
TEL: (505) 564-2281
FAX

RE: CoPC Reese Mesa 101H

OrderNo.: 1604357

Dear Emilee Skyles:

Hall Environmental Analysis Laboratory received 1 sample(s) on 4/8/2016 for the analyses presented in the following report.

These were analyzed according to EPA procedures or equivalent. To access our accredited tests please go to www.hallenvironmental.com or the state specific web sites. In order to properly interpret your results it is imperative that you review this report in its entirety. See the sample checklist and/or the Chain of Custody for information regarding the sample receipt temperature and preservation. Data qualifiers or a narrative will be provided if the sample analysis or analytical quality control parameters require a flag. When necessary, data qualifiers are provided on both the sample analysis report and the QC summary report, both sections should be reviewed. All samples are reported, as received, unless otherwise indicated. Lab measurement of analytes considered field parameters that require analysis within 15 minutes of sampling such as pH and residual chlorine are qualified as being analyzed outside of the recommended holding time.

Please don't hesitate to contact HEAL for any additional information or clarifications.

ADHS Cert #AZ0682 -- NMED-DWB Cert #NM9425 -- NMED-Micro Cert #NM0190

Sincerely,

A handwritten signature in black ink, appearing to read "Andy Freeman", is written over a light blue horizontal line.

Andy Freeman
Laboratory Manager
4901 Hawkins NE
Albuquerque, NM 87109

Analytical Report

Lab Order 1604357

Date Reported: 4/19/2016

Hall Environmental Analysis Laboratory, Inc.

CLIENT: Animas Environmental

Client Sample ID: BGT SC-1

Project: CoPC Reese Mesa 101H

Collection Date: 4/7/2016 10:32:00 AM

Lab ID: 1604357-001

Matrix: SOIL

Received Date: 4/8/2016 8:20:00 AM

Analyses	Result	PQL	Qual	Units	DF	Date Analyzed	Batch
EPA METHOD 418.1: TPH							Analyst: TOM
Petroleum Hydrocarbons, TR	ND	19		mg/Kg	1	4/12/2016	24714
EPA METHOD 300.0: ANIONS							Analyst: LGT
Chloride	ND	30		mg/Kg	20	4/14/2016 8:32:45 PM	24814
EPA METHOD 8021B: VOLATILES							Analyst: NSB
Benzene	ND	0.024		mg/Kg	1	4/11/2016 6:35:38 PM	24703
Toluene	ND	0.048		mg/Kg	1	4/11/2016 6:35:38 PM	24703
Ethylbenzene	ND	0.048		mg/Kg	1	4/11/2016 6:35:38 PM	24703
Xylenes, Total	ND	0.097		mg/Kg	1	4/11/2016 6:35:38 PM	24703
Surr: 4-Bromofluorobenzene	106	80-120		%Rec	1	4/11/2016 6:35:38 PM	24703

Refer to the QC Summary report and sample login checklist for flagged QC data and preservation information.

Qualifiers:	* Value exceeds Maximum Contaminant Level.	B Analyte detected in the associated Method Blank
	D Sample Diluted Due to Matrix	E Value above quantitation range
	H Holding times for preparation or analysis exceeded	J Analyte detected below quantitation limits
ND	Not Detected at the Reporting Limit	P Sample pH Not In Range
R	RPD outside accepted recovery limits	RL Reporting Detection Limit
S	% Recovery outside of range due to dilution or matrix	W Sample container temperature is out of limit as specified

QC SUMMARY REPORT

Hall Environmental Analysis Laboratory, Inc.

WO#: 1604357

19-Apr-16

Client: Animas Environmental
Project: CoPC Reese Mesa 101H

Sample ID	MB-24814	SampType:	MBLK	TestCode:	EPA Method 300.0: Anions					
Client ID:	PBS	Batch ID:	24814	RunNo:	33565					
Prep Date:	4/14/2016	Analysis Date:	4/14/2016	SeqNo:	1032961	Units:	mg/Kg			
Analyte	Result	PQL	SPK value	SPK Ref Val	%REC	LowLimit	HighLimit	%RPD	RPDLimit	Qual
Chloride	ND	1.5								

Sample ID	LCS-24814	SampType:	LCS	TestCode:	EPA Method 300.0: Anions					
Client ID:	LCSS	Batch ID:	24814	RunNo:	33565					
Prep Date:	4/14/2016	Analysis Date:	4/14/2016	SeqNo:	1032962	Units:	mg/Kg			
Analyte	Result	PQL	SPK value	SPK Ref Val	%REC	LowLimit	HighLimit	%RPD	RPDLimit	Qual
Chloride	14	1.5	15.00	0	94.3	90	110			

Qualifiers:

* Value exceeds Maximum Contaminant Level.
D Sample Diluted Due to Matrix
H Holding times for preparation or analysis exceeded
ND Not Detected at the Reporting Limit
R RPD outside accepted recovery limits
S % Recovery outside of range due to dilution or matrix

B Analyte detected in the associated Method Blank
E Value above quantitation range
J Analyte detected below quantitation limits
P Sample pH Not In Range
RL Reporting Detection Limit
W Sample container temperature is out of limit as specified

QC SUMMARY REPORT

Hall Environmental Analysis Laboratory, Inc.

WO#: 1604357

19-Apr-16

Client: Animas Environmental

Project: CoPC Reese Mesa 101H

Sample ID	MB-24714	SampType:	MBLK	TestCode:	EPA Method 418.1: TPH					
Client ID:	PBS	Batch ID:	24714	RunNo:	33462					
Prep Date:	4/11/2016	Analysis Date:	4/12/2016	SeqNo:	1029260	Units:	mg/Kg			
Analyte	Result	PQL	SPK value	SPK Ref Val	%REC	LowLimit	HighLimit	%RPD	RPDLimit	Qual
Petroleum Hydrocarbons, TR	ND	20								

Sample ID	LCS-24714	SampType:	LCS	TestCode:	EPA Method 418.1: TPH					
Client ID:	LCSS	Batch ID:	24714	RunNo:	33462					
Prep Date:	4/11/2016	Analysis Date:	4/12/2016	SeqNo:	1029261	Units:	mg/Kg			
Analyte	Result	PQL	SPK value	SPK Ref Val	%REC	LowLimit	HighLimit	%RPD	RPDLimit	Qual
Petroleum Hydrocarbons, TR	110	20	100.0	0	110	83.4	127			

Sample ID	LCSD-24714	SampType:	LCSD	TestCode:	EPA Method 418.1: TPH					
Client ID:	LCSS02	Batch ID:	24714	RunNo:	33462					
Prep Date:	4/11/2016	Analysis Date:	4/12/2016	SeqNo:	1029262	Units:	mg/Kg			
Analyte	Result	PQL	SPK value	SPK Ref Val	%REC	LowLimit	HighLimit	%RPD	RPDLimit	Qual
Petroleum Hydrocarbons, TR	110	20	100.0	0	113	83.4	127	2.52	20	

Qualifiers:

* Value exceeds Maximum Contaminant Level.
D Sample Diluted Due to Matrix
H Holding times for preparation or analysis exceeded
ND Not Detected at the Reporting Limit
R RPD outside accepted recovery limits
S % Recovery outside of range due to dilution or matrix

B Analyte detected in the associated Method Blank
E Value above quantitation range
J Analyte detected below quantitation limits
P Sample pH Not In Range
RL Reporting Detection Limit
W Sample container temperature is out of limit as specified

QC SUMMARY REPORT

Hall Environmental Analysis Laboratory, Inc.

WO#: 1604357

19-Apr-16

Client: Animas Environmental

Project: CoPC Reese Mesa 101H

Sample ID	MB-24703		SampType:	MBLK		TestCode:	EPA Method 8021B: Volatiles			
Client ID:	PBS		Batch ID:	24703		RunNo:	33446			
Prep Date:	4/8/2016		Analysis Date:	4/11/2016		SeqNo:	1028536		Units: mg/Kg	
Analyte	Result	PQL	SPK value	SPK Ref Val	%REC	LowLimit	HighLimit	%RPD	RPDLimit	Qual
Benzene	ND	0.025								
Toluene	ND	0.050								
Ethylbenzene	ND	0.050								
Xylenes, Total	ND	0.10								
Surr: 4-Bromofluorobenzene	0.87		1.000		86.5	80	120			

Sample ID	LCS-24703		SampType:	LCS		TestCode:	EPA Method 8021B: Volatiles			
Client ID:	LCSS		Batch ID:	24703		RunNo:	33446			
Prep Date:	4/8/2016		Analysis Date:	4/11/2016		SeqNo:	1028537		Units: mg/Kg	
Analyte	Result	PQL	SPK value	SPK Ref Val	%REC	LowLimit	HighLimit	%RPD	RPDLimit	Qual
Benzene	0.87	0.025	1.000	0	87.2	75.3	123			
Toluene	0.95	0.050	1.000	0	94.8	80	124			
Ethylbenzene	0.98	0.050	1.000	0	98.3	82.8	121			
Xylenes, Total	3.0	0.10	3.000	0	99.3	83.9	122			
Surr: 4-Bromofluorobenzene	1.2		1.000		123	80	120			S

Qualifiers:

* Value exceeds Maximum Contaminant Level.
D Sample Diluted Due to Matrix
H Holding times for preparation or analysis exceeded
ND Not Detected at the Reporting Limit
R RPD outside accepted recovery limits
S % Recovery outside of range due to dilution or matrix

B Analyte detected in the associated Method Blank
E Value above quantitation range
J Analyte detected below quantitation limits
P Sample pH Not In Range
RL Reporting Detection Limit
W Sample container temperature is out of limit as specified

Sample Log-In Check List

Receipt No: 1

Work Order Number: 1604357

Client Name: Animas Environmental

Received by/date: *CM*

Logged By: Joe Archuleta

4/8/2016 8:20:00 AM

Completed By: Joe Archuleta

4/8/2016 1:14:33 PM

Reviewed By:

Chain of Custody

1. Custody seals intact on sample bottles?

Yes ☒ No ☐

Not Present ☒

2. Is Chain of Custody complete?

Yes ☒ No ☐

Not Present ☐

3. How was the sample delivered?

Courier

Log In

4. Was an attempt made to cool the samples?

Yes ☒ No ☐

NA ☐

5. Were all samples received at a temperature of $>0^{\circ}\text{C}$ to 6.0°C ?

Yes ☒ No ☐

NA ☐

6. Sample(s) in proper container(s)?

Yes ☒ No ☐

No ☐

7. Sufficient sample volume for indicated test(s)?

Yes ☒ No ☐

No ☐

8. Are samples (except VOA and ONG) properly preserved?

Yes ☒ No ☐

No ☐

9. Was preservative added to bottles?

Yes ☐ No ☒

NA ☐

10. VOA vials have zero headspace?

Yes ☐ No ☒

No ☐

11. Were any sample containers received broken?

Yes ☐ No ☒

No ☐

12. Does paperwork match bottle labels?

Yes ☒ No ☐

No ☐

(Note discrepancies on chain of custody)

13. Are matrices correctly identified on Chain of Custody?

Yes ☒ No ☐

No ☐

14. Is it clear what analyses were requested?

Yes ☒ No ☐

No ☐

15. Were all holding times able to be met?

Yes ☒ No ☐

No ☐

(If no, notify customer for authorization.)

Special Handling (if applicable)

16. Was client notified of all discrepancies with this order?

Yes ☐ No ☐

NA ☒

Person Notified:

Date:

By Whom:

Via:

☐ eMail ☐ Phone ☐ Fax ☐ In Person

Regarding:

Client Instructions:

17. Additional remarks:

18. Cooler Information

1	4.2	Good	Yes	Signed By
Cooler No	Temp °C	Condition	Seal Intact	Seal No
Seal Intact	Seal No	Seal Date		

| FULL-AROUND TIME:

☒ Standard ☐ Rush

Project Name:

COPC Reese Mesa 101H

Project #:

Project Manager:

E. Skyles

Sampler: SG

On Ice: ☒ Yes ☐ No

Sample Temperature: 47

HALL ENVIRONMENTAL ANALYSIS LABORATORY

www.hallenvironmental.com

4901 Hawkins NE - Albuquerque, NM 87109

Tel. 505-345-3975 Fax 505-345-4107

Analysis Request

[illegible]

Received by: <u> N </u>	Date	Time
---------------------------	------	------

Date	Time
------	------

Received by:	Date	Time
--------------	------	------

Date Time

Remarks: Bill to Conoco Phillips
WO #10380931
Supervisor: Travis Andrews
USERID: KGARCIA
Area: 4
Ordered by: Lisa Hunter

If necessary, samples submitted to Hall Environmental may be subcontracted to other accredited laboratories. This serves as notice of this possibility. Any sub-contracted data will be clearly notated on the analytical report.



CONOCOPHILLIPS COMPANY

REESE MESA #101H

1100' FSL 940' FEL

UNIT P SEC 13 T32N R08W

BH: NWN SEC 13 T32N R08W

API #30-045-26977 ELEV. 7033'

LEASE# NMNM-6892

LATITUDE 36° 58 MIN. 41 SEC. N (NAD 83)

LONGITUDE 107° 37 MIN. 17 SEC. W (NAD 83)

SAN JUAN COUNTY, NEW MEXICO

EMERGENCY CONTACT: 1-505-324-5170