

District I
1625 N. French Dr., Hobbs, NM 88240
District II
811 S. First St., Artesia, NM 88210
District III
1000 Rio Brazos Road, Aztec, NM 87410
District IV
1220 S. St. Francis Dr., Santa Fe, NM 87505

State of New Mexico
Energy Minerals and Natural Resources
Department
Oil Conservation Division
1220 South St. Francis Dr.
Santa Fe, NM 87505

Form C-144
Revised June 6, 2013

For temporary pits, below-grade tanks, and multi-well fluid management pits, submit to the appropriate NMOCD District Office.
For permanent pits submit to the Santa Fe Environmental Bureau office and provide a copy to the appropriate NMOCD District Office.

Pit, Below-Grade Tank, or
Proposed Alternative Method Permit or Closure Plan Application

15796
Type of action: ☐ Below grade tank registration
☐ Permit of a pit or proposed alternative method
☒ Closure of a pit, below-grade tank, or proposed alternative method
☐ Modification to an existing permit/or registration
☐ Closure plan only submitted for an existing permitted or non-permitted pit, below-grade tank, or proposed alternative method

Instructions: Please submit one application (Form C-144) per individual pit, below-grade tank or alternative request

Please be advised that approval of this request does not relieve the operator of liability should operations result in pollution of surface water, ground water or the environment. Nor does approval relieve the operator of its responsibility to comply with any other applicable governmental authority's rules, regulations or ordinances.

1.
Operator: Burlington Resources Oil & Gas Company, LP OGRID #: 14538

OIL CONS. DIV DIST. 3

Address: PO BOX 4289, Farmington, NM 87499

Facility or well name: CONGRESS 6E

JAN 23 2017

API Number: 30-045-24838 OCD Permit Number: _____

U/L or Qtr/Qtr O Section 35 Township 29N Range 11W County: San Juan

Center of Proposed Design: Latitude 36.677847 °N Longitude -107.958438 °W NAD: ☐ 1927 ☒ 1983

Surface Owner: ☒ Federal ☐ State ☐ Private ☐ Tribal Trust or Indian Allotment

2.
☐ **Pit:** Subsection F, G or J of 19.15.17.11 NMAC

Temporary: ☐ Drilling ☐ Workover

☐ Permanent ☐ Emergency ☐ Cavitation ☐ P&A ☐ Multi-Well Fluid Management Low Chloride Drilling Fluid ☐ yes ☐ no

☐ Lined ☐ Unlined Liner type: Thickness _____ mil ☐ LLDPE ☐ HDPE ☐ PVC ☐ Other _____

☐ String-Reinforced

Liner Seams: ☐ Welded ☐ Factory ☐ Other _____ Volume: _____ bbl Dimensions: L _____ x W _____ x D _____

3.
☒ **Below-grade tank:** Subsection I of 19.15.17.11 NMAC

Volume: 120 bbl Type of fluid: Produced Water

Tank Construction material: Metal

☐ Secondary containment with leak detection ☒ Visible sidewalls, liner, 6-inch lift and automatic overflow shut-off

☐ Visible sidewalls and liner ☐ Visible sidewalls only ☐ Other _____

Liner type: Thickness 45 mil ☐ HDPE ☐ PVC ☒ Other LLDPE

4.
☐ **Alternative Method:**

Submittal of an exception request is required. Exceptions must be submitted to the Santa Fe Environmental Bureau office for consideration of approval.

5.
Fencing: Subsection D of 19.15.17.11 NMAC (Applies to permanent pits, temporary pits, and below-grade tanks)

☐ Chain link, six feet in height, two strands of barbed wire at top (Required if located within 1000 feet of a permanent residence, school, hospital, institution or church)

☐ Four foot height, four strands of barbed wire evenly spaced between one and four feet

☐ Alternate. Please specify _____

6.

Netting: Subsection E of 19.15.17.11 NMAC (*Applies to permanent pits and permanent open top tanks*)

- ☐ Screen ☐ Netting ☐ Other _____
- ☐ Monthly inspections (If netting or screening is not physically feasible)

7.

Signs: Subsection C of 19.15.17.11 NMAC

- ☐ 12"x 24", 2" lettering, providing Operator's name, site location, and emergency telephone numbers
- ☐ Signed in compliance with 19.15.16.8 NMAC

8.

Variances and Exceptions:

Justifications and/or demonstrations of equivalency are required. Please refer to 19.15.17 NMAC for guidance.

Please check a box if one or more of the following is requested, if not leave blank:

- ☐ Variance(s): Requests must be submitted to the appropriate division district for consideration of approval.
- ☐ Exception(s): Requests must be submitted to the Santa Fe Environmental Bureau office for consideration of approval.

9.

Siting Criteria (regarding permitting): 19.15.17.10 NMAC

Instructions: *The applicant must demonstrate compliance for each siting criteria below in the application. Recommendations of acceptable source material are provided below. Siting criteria does not apply to drying pads or above-grade tanks.*

General siting

Ground water is less than 25 feet below the bottom of a low chloride temporary pit or below-grade tank.

- ☐ NM Office of the State Engineer - iWATERS database search; ☐ USGS; ☐ Data obtained from nearby wells

☐ Yes ☐ No
☒ NA

Ground water is less than 50 feet below the bottom of a Temporary pit, permanent pit, or Multi-Well Fluid Management pit.

NM Office of the State Engineer - iWATERS database search; USGS; Data obtained from nearby wells

☐ Yes ☐ No
☒ NA

Within incorporated municipal boundaries or within a defined municipal fresh water well field covered under a municipal ordinance adopted pursuant to NMSA 1978, Section 3-27-3, as amended. **(Does not apply to below grade tanks)**

- Written confirmation or verification from the municipality; Written approval obtained from the municipality

☐ Yes ☐ No

Within the area overlying a subsurface mine. **(Does not apply to below grade tanks)**

- Written confirmation or verification or map from the NM EMNRD-Mining and Mineral Division

☐ Yes ☐ No

Within an unstable area. **(Does not apply to below grade tanks)**

- Engineering measures incorporated into the design; NM Bureau of Geology & Mineral Resources; USGS; NM Geological Society; Topographic map

☐ Yes ☐ No

Within a 100-year floodplain. **(Does not apply to below grade tanks)**

- FEMA map

☐ Yes ☐ No

Below Grade Tanks

Within 100 feet of a continuously flowing watercourse, significant watercourse, lake bed, sinkhole, wetland or playa lake (measured from the ordinary high-water mark).

- Topographic map; Visual inspection (certification) of the proposed site

☐ Yes ☒ No

Within 200 horizontal feet of a spring or a fresh water well used for public or livestock consumption;

- NM Office of the State Engineer - iWATERS database search; Visual inspection (certification) of the proposed site

☐ Yes ☒ No

Temporary Pit using Low Chloride Drilling Fluid (maximum chloride content 15,000 mg/liter)

Within 100 feet of a continuously flowing watercourse, or any other significant watercourse or within 200 feet of any lakebed, sinkhole, or playa lake (measured from the ordinary high-water mark). (Applies to low chloride temporary pits.)

- Topographic map; Visual inspection (certification) of the proposed site

☐ Yes ☐ No

Within 300 feet from a occupied permanent residence, school, hospital, institution, or church in existence at the time of initial application.

- Visual inspection (certification) of the proposed site; Aerial photo; Satellite image

☐ Yes ☐ No

Within 200 horizontal feet of a spring or a private, domestic fresh water well used by less than five households for domestic or stock watering purposes, or 300feet of any other fresh water well or spring, in existence at the time of the initial application.

NM Office of the State Engineer - iWATERS database search; Visual inspection (certification) of the proposed site

☐ Yes ☐ No

Within 100 feet of a wetland.

- US Fish and Wildlife Wetland Identification map; Topographic map; Visual inspection (certification) of the proposed site

☐ Yes ☐ No

Temporary Pit Non-low chloride drilling fluid

Within 300 feet of a continuously flowing watercourse, or any other significant watercourse, or within 200 feet of any lakebed, sinkhole, or playa lake (measured from the ordinary high-water mark).

- Topographic map; Visual inspection (certification) of the proposed site

☐ Yes ☐ No

Within 300 feet from a permanent residence, school, hospital, institution, or church in existence at the time of initial application.

- Visual inspection (certification) of the proposed site; Aerial photo; Satellite image

☐ Yes ☐ No

Within 500 horizontal feet of a spring or a private, domestic fresh water well used by less than five households for domestic or stock watering purposes, or 1000 feet of any other fresh water well or spring, in the existence at the time of the initial application;

- NM Office of the State Engineer - iWATERS database search; Visual inspection (certification) of the proposed site

☐ Yes ☐ No

Within 300 feet of a wetland.

- US Fish and Wildlife Wetland Identification map; Topographic map; Visual inspection (certification) of the proposed site

☐ Yes ☐ No

Permanent Pit or Multi-Well Fluid Management Pit

Within 300 feet of a continuously flowing watercourse, or 200 feet of any other significant watercourse, or lakebed, sinkhole, or playa lake (measured from the ordinary high-water mark).

- Topographic map; Visual inspection (certification) of the proposed site

☐ Yes ☐ No

Within 1000 feet from a permanent residence, school, hospital, institution, or church in existence at the time of initial application.

- Visual inspection (certification) of the proposed site; Aerial photo; Satellite image

☐ Yes ☐ No

Within 500 horizontal feet of a spring or a fresh water well used for domestic or stock watering purposes, in existence at the time of initial application.

- NM Office of the State Engineer - iWATERS database search; Visual inspection (certification) of the proposed site

☐ Yes ☐ No

Within 500 feet of a wetland.

- US Fish and Wildlife Wetland Identification map; Topographic map; Visual inspection (certification) of the proposed site

☐ Yes ☐ No

10.

Temporary Pits, Emergency Pits, and Below-grade Tanks Permit Application Attachment Checklist: Subsection B of 19.15.17.9 NMAC

Instructions: Each of the following items must be attached to the application. Please indicate, by a check mark in the box, that the documents are attached.

- ☐ Hydrogeologic Report (Below-grade Tanks) - based upon the requirements of Paragraph (4) of Subsection B of 19.15.17.9 NMAC
- ☐ Hydrogeologic Data (Temporary and Emergency Pits) - based upon the requirements of Paragraph (2) of Subsection B of 19.15.17.9 NMAC
- ☐ Siting Criteria Compliance Demonstrations - based upon the appropriate requirements of 19.15.17.10 NMAC
- ☐ Design Plan - based upon the appropriate requirements of 19.15.17.11 NMAC
- ☐ Operating and Maintenance Plan - based upon the appropriate requirements of 19.15.17.12 NMAC
- ☐ Closure Plan (Please complete Boxes 14 through 18, if applicable) - based upon the appropriate requirements of Subsection C of 19.15.17.9 NMAC and 19.15.17.13 NMAC

☐ Previously Approved Design (attach copy of design) API Number: _____ or Permit Number: _____

11.

Multi-Well Fluid Management Pit Checklist: Subsection B of 19.15.17.9 NMAC

Instructions: Each of the following items must be attached to the application. Please indicate, by a check mark in the box, that the documents are attached.

- ☐ Design Plan - based upon the appropriate requirements of 19.15.17.11 NMAC
- ☐ Operating and Maintenance Plan - based upon the appropriate requirements of 19.15.17.12 NMAC
- ☐ A List of wells with approved application for permit to drill associated with the pit.
- ☐ Closure Plan (Please complete Boxes 14 through 18, if applicable) - based upon the appropriate requirements of Subsection C of 19.15.17.9 NMAC and 19.15.17.13 NMAC
- ☐ Hydrogeologic Data - based upon the requirements of Paragraph (4) of Subsection B of 19.15.17.9 NMAC
- ☐ Siting Criteria Compliance Demonstrations - based upon the appropriate requirements of 19.15.17.10 NMAC

☐ Previously Approved Design (attach copy of design) API Number: _____ or Permit Number: _____

12.

Permanent Pits Permit Application Checklist: Subsection B of 19.15.17.9 NMAC

Instructions: Each of the following items must be attached to the application. Please indicate, by a check mark in the box, that the documents are attached.

- ☐ Hydrogeologic Report - based upon the requirements of Paragraph (1) of Subsection B of 19.15.17.9 NMAC
☐ Siting Criteria Compliance Demonstrations - based upon the appropriate requirements of 19.15.17.10 NMAC
☐ Climatological Factors Assessment
☐ Certified Engineering Design Plans - based upon the appropriate requirements of 19.15.17.11 NMAC
☐ Dike Protection and Structural Integrity Design - based upon the appropriate requirements of 19.15.17.11 NMAC
☐ Leak Detection Design - based upon the appropriate requirements of 19.15.17.11 NMAC
☐ Liner Specifications and Compatibility Assessment - based upon the appropriate requirements of 19.15.17.11 NMAC
☐ Quality Control/Quality Assurance Construction and Installation Plan
☐ Operating and Maintenance Plan - based upon the appropriate requirements of 19.15.17.12 NMAC
☐ Freeboard and Overtopping Prevention Plan - based upon the appropriate requirements of 19.15.17.11 NMAC
☐ Nuisance or Hazardous Odors, including H₂S, Prevention Plan
☐ Emergency Response Plan
☐ Oil Field Waste Stream Characterization
☐ Monitoring and Inspection Plan
☐ Erosion Control Plan
☐ Closure Plan - based upon the appropriate requirements of Subsection C of 19.15.17.9 NMAC and 19.15.17.13 NMAC

13.

Proposed Closure: 19.15.17.13 NMAC

Instructions: Please complete the applicable boxes, Boxes 14 through 18, in regards to the proposed closure plan.

- Type: ☐ Drilling ☐ Workover ☐ Emergency ☐ Cavitation ☐ P&A ☐ Permanent Pit ☐ Below-grade Tank ☐ Multi-well Fluid Management Pit
☐ Alternative
- Proposed Closure Method: ☒ Waste Excavation and Removal
☐ Waste Removal (Closed-loop systems only)
☐ On-site Closure Method (Only for temporary pits and closed-loop systems)
☐ In-place Burial ☐ On-site Trench Burial
☐ Alternative Closure Method

14.

Waste Excavation and Removal Closure Plan Checklist: (19.15.17.13 NMAC) **Instructions:** Each of the following items must be attached to the closure plan. Please indicate, by a check mark in the box, that the documents are attached.

- ☒ Protocols and Procedures - based upon the appropriate requirements of 19.15.17.13 NMAC
☒ Confirmation Sampling Plan (if applicable) - based upon the appropriate requirements of Subsection C of 19.15.17.13 NMAC
☒ Disposal Facility Name and Permit Number (for liquids, drilling fluids and drill cuttings)
☒ Soil Backfill and Cover Design Specifications - based upon the appropriate requirements of Subsection H of 19.15.17.13 NMAC
☒ Re-vegetation Plan - based upon the appropriate requirements of Subsection H of 19.15.17.13 NMAC
☒ Site Reclamation Plan - based upon the appropriate requirements of Subsection H of 19.15.17.13 NMAC

15.

Siting Criteria (regarding on-site closure methods only): 19.15.17.10 NMAC

Instructions: Each siting criteria requires a demonstration of compliance in the closure plan. Recommendations of acceptable source material are provided below. Requests regarding changes to certain siting criteria require justifications and/or demonstrations of equivalency. Please refer to 19.15.17.10 NMAC for guidance.

Ground water is less than 25 feet below the bottom of the buried waste. - NM Office of the State Engineer - iWATERS database search; USGS; Data obtained from nearby wells	<input type="checkbox"/> Yes <input type="checkbox"/> No <input type="checkbox"/> NA
Ground water is between 25-50 feet below the bottom of the buried waste - NM Office of the State Engineer - iWATERS database search; USGS; Data obtained from nearby wells	<input type="checkbox"/> Yes <input type="checkbox"/> No <input type="checkbox"/> NA
Ground water is more than 100 feet below the bottom of the buried waste. - NM Office of the State Engineer - iWATERS database search; USGS; Data obtained from nearby wells	<input type="checkbox"/> Yes <input type="checkbox"/> No <input type="checkbox"/> NA
Within 100 feet of a continuously flowing watercourse, or 200 feet of any other significant watercourse, lakebed, sinkhole, or playa lake (measured from the ordinary high-water mark). - Topographic map; Visual inspection (certification) of the proposed site	<input type="checkbox"/> Yes <input type="checkbox"/> No
Within 300 feet from a permanent residence, school, hospital, institution, or church in existence at the time of initial application. - Visual inspection (certification) of the proposed site; Aerial photo; Satellite image	<input type="checkbox"/> Yes <input type="checkbox"/> No
Within 300 horizontal feet of a private, domestic fresh water well or spring used for domestic or stock watering purposes, in existence at the time of initial application. - NM Office of the State Engineer - iWATERS database; Visual inspection (certification) of the proposed site	<input type="checkbox"/> Yes <input type="checkbox"/> No
Written confirmation or verification from the municipality; Written approval obtained from the municipality	<input type="checkbox"/> Yes <input type="checkbox"/> No
Within 300 feet of a wetland. US Fish and Wildlife Wetland Identification map; Topographic map; Visual inspection (certification) of the proposed site	<input type="checkbox"/> Yes <input type="checkbox"/> No
Within incorporated municipal boundaries or within a defined municipal fresh water well field covered under a municipal ordinance	

adopted pursuant to NMSA 1978, Section 3-27-3, as amended.

- Written confirmation or verification from the municipality; Written approval obtained from the municipality

☐ Yes ☐ No

Within the area overlying a subsurface mine.

- Written confirmation or verification or map from the NM EMNRD-Mining and Mineral Division

☐ Yes ☐ No

Within an unstable area.

- Engineering measures incorporated into the design; NM Bureau of Geology & Mineral Resources; USGS; NM Geological Society; Topographic map

☐ Yes ☐ No

Within a 100-year floodplain.

- FEMA map

☐ Yes ☐ No

16.

On-Site Closure Plan Checklist: (19.15.17.13 NMAC) *Instructions: Each of the following items must be attached to the closure plan. Please indicate, by a check mark in the box, that the documents are attached.*

- ☐ Siting Criteria Compliance Demonstrations - based upon the appropriate requirements of 19.15.17.10 NMAC
☐ Proof of Surface Owner Notice - based upon the appropriate requirements of Subsection E of 19.15.17.13 NMAC
☐ Construction/Design Plan of Burial Trench (if applicable) based upon the appropriate requirements of Subsection K of 19.15.17.11 NMAC
☐ Construction/Design Plan of Temporary Pit (for in-place burial of a drying pad) - based upon the appropriate requirements of 19.15.17.11 NMAC
☐ Protocols and Procedures - based upon the appropriate requirements of 19.15.17.13 NMAC
☐ Confirmation Sampling Plan (if applicable) - based upon the appropriate requirements of 19.15.17.13 NMAC
☐ Waste Material Sampling Plan - based upon the appropriate requirements of 19.15.17.13 NMAC
☐ Disposal Facility Name and Permit Number (for liquids, drilling fluids and drill cuttings or in case on-site closure standards cannot be achieved)
☐ Soil Cover Design - based upon the appropriate requirements of Subsection H of 19.15.17.13 NMAC
☐ Re-vegetation Plan - based upon the appropriate requirements of Subsection H of 19.15.17.13 NMAC
☐ Site Reclamation Plan - based upon the appropriate requirements of Subsection H of 19.15.17.13 NMAC

17.

Operator Application Certification:

I hereby certify that the information submitted with this application is true, accurate and complete to the best of my knowledge and belief.

Name (Print): _____ Title: _____

Signature: _____ Date: _____

e-mail address: _____ Telephone: _____

18.

OCD Approval: ☐ Permit Application (including closure plan) ☒ Closure Plan (only) ☐ OCD Conditions (see attachment)

OCD Representative Signature: _____ Approval Date: 1/26/2017

Title: Environmental Specialist OCD Permit Number: _____

19.

Closure Report (required within 60 days of closure completion): 19.15.17.13 NMAC

Instructions: Operators are required to obtain an approved closure plan prior to implementing any closure activities and submitting the closure report. The closure report is required to be submitted to the division within 60 days of the completion of the closure activities. Please do not complete this section of the form until an approved closure plan has been obtained and the closure activities have been completed.

☒ Closure Completion Date: 1/5/2017

20.

Closure Method:

- ☒ Waste Excavation and Removal ☐ On-Site Closure Method ☐ Alternative Closure Method ☐ Waste Removal (Closed-loop systems only)
☐ If different from approved plan, please explain.

21.

Closure Report Attachment Checklist: *Instructions: Each of the following items must be attached to the closure report. Please indicate, by a check mark in the box, that the documents are attached.*

- ☒ Proof of Closure Notice (surface owner and division)
☐ Proof of Deed Notice (required for on-site closure for private land only)
☐ Plot Plan (for on-site closures and temporary pits)
☒ Confirmation Sampling Analytical Results (if applicable)
☐ Waste Material Sampling Analytical Results (required for on-site closure)
☐ Disposal Facility Name and Permit Number
☒ Soil Backfilling and Cover Installation
☒ Re-vegetation Application Rates and Seeding Technique
☒ Site Reclamation (Photo Documentation)

On-site Closure Location: Latitude _____ °N _____ Longitude _____ °W _____ NAD: ☐ 1927 ☐ 1983

Operator Closure Certification:

I hereby certify that the information and attachments submitted with this closure report is true, accurate and complete to the best of my knowledge and belief. I also certify that the closure complies with all applicable closure requirements and conditions specified in the approved closure plan.

Name (Print) Christine Brock Title: Regulatory Specialist

Signature: Christine Brock Date: 1/18/17

e-mail address: christine.brock@cop.com Telephone: (505) 326-9775

Burlington Resources Oil & Gas Company
San Juan Basin: New Mexico Assets
Below Grade Tank Closure Report

Lease Name: Congress 6E
API No.: 30-045-24838

In accordance with Rule 19.15.17.13 NMAC, the following information describes the closure of the below-grade tank referenced above. All proper documentation regarding closure activities is being included with the C-144.

General Plan Requirements:

1. Prior to initiating any BGT closure, except in the case of an emergency, BR will notify the surface owner of the intent to close the BGT by certified mail no later than 72 hours or one week before closure and a copy of this notification will be included in the closure report. In the case of an emergency, the surface owner will be notified as soon as practical.

The surface owner was notified by email of the closure process and the notification is attached.

2. Notice of closure will be given to the District Division office between 72 hours and one week of the scheduled closure via email or phone. The notification of closure will include the following:
 - a. Operators Name
 - b. Well Name and API Number
 - c. Location

Notification is attached.

3. All liquids will be removed from the BGT following cessation of operation. Produced water will be disposed of at one of COP's approved Salt Water Disposal facilities or at a District Division approved facility.

All recovered liquids were disposed of at an approved SWD facility or an approved District Division facility within 60 days of cessation of operation.

4. Solids and sludge's will be shoveled and/or vacuumed out for disposal at one of the District Division approved facilities, depending on the proximity of the BGT site: Envirotech Land Farm (Permit #NM-01-011), JFJ Land Farm % Industrial Ecosystems Inc. (Permit #NM-01-0010B), and Basin Disposal (Permit #NM-01-005).

Any sludge or soil required to be removed to facilitate closure was transported to Envirotech Land Farm (Permit # NM-01-011) and/or JFJ Landfarm % IEI (Permit# NM-01-0010B).

5. BR will obtain prior approval from District Division to dispose, recycle, reuse, or reclaim the BGT and provide documentation of the disposition of the BGT in the closure report. Steel materials will be recycled or reused as approved by the District Division. Fiberglass tanks will be empty, cut up or shredded, and EPA cleaned for disposal as solid waste. Liner materials will be cleaned without soils or contaminated material for disposal as solid waste. Fiberglass tanks and liner materials will meet the conditions of 19.15.35 NMAC. Disposal will be at a licensed disposal facility, presently San Juan County Landfill operated by Waste Management under NMED Permit SWM-052426.

The below-grade tank was disposed of in a division-approved manner. The liner was cleaned per 19.15.35.8.C(1)(m) NMAC and disposed of at the San Juan County Regional Landfill located on CR 3100.

6. Any equipment associated with the BGT that is no longer required for some other purpose, following the closure, will be removed.

All on-site equipment associated with the below-grade tank was removed.

7. Following removal of the tank and any liner material, BR will test the soils beneath the BGT as follows:
 - a. At a minimum, a five-point composite sample will be taken to include any obvious stained or wet soils or any other evidence of contamination.
 - b. The laboratory sample shall be analyzed for the constituents listed in Table I of 19.15.17.13.

A five point composite sample was taken of the below-grade tank using sampling tools and all samples tested per Table I of 19.15.17.13 and the results are attached.

8. If the District Division and/or BR determine there is a release, BR will comply with 19.15.17.13.C.3b.

A release was not determined for the above referenced well.

9. Upon completion of the tank removal, pursuant to 19.15.17.13.C.3c, if all contaminant concentrations are less than or equal to the parameters listed in Table I of 19.15.17.13 NMAC, the excavation will be backfilled with non-waste earthen material compacted and covered with a minimum of one foot top soil or background thickness whichever is greater and to existing grade. The surface will be re-contoured to match the native grade and to prevent ponding.

The tank removal area passed all requirements of Table I of 19.15.17.13 NMAC and was backfilled with compacted, non-waste containing, earthen material which included at least one foot of suitable material to establish vegetation at the site.

10. For those portions of the former BGT area no longer required for production activities, BR will seed the disturbed area the first favorable growing season after the BGT is covered. Seeding will be accomplished via drilling on the contour whenever practical, or by other District Division-approved methods. BR will notify the District Division when reclamation and re-vegetation is complete.

Reclamation of the BGT shall be considered complete when:

- Vegetative cover reflects a life form ratio of +/- 50% of pre disturbance levels.
- Total percent plant cover of at least 70% of pre-disturbance levels (Excluding noxious weeds) OR
- Pursuant to 19.15.17.13.H.5d BR will comply with obligations imposed by other applicable federal or tribal agencies in which there re-vegetation and reclamation requirements provide equal or better protection of fresh water, human health and the environment.

Provision 10 will be accomplished pursuant to 19.15.17.H.5d and notification will be submitted upon completion.

11. For those portions of the former BGT area required for production activities, reseeding will be done at well abandonment, and following the procedure noted above.

The former BGT area is not required for production activities and reseeding will be on 2/27/2017 per the procedure noted above.

Closure Report:

All closure activities will include proper documentation and will be submitted to OCD within 60 days of the BGT closure on a Closure Report using District Division Form C-144. The Report will include the following:

- Proof of Closure Notice (surface owner and District Division) **(Attached)**
- Backfilling & cover installation **(See Report)**
- Confirmation Sampling Analytical Results **(Attached)**
- Application Rate & Seeding techniques **(See Report)**
- Photo Documentation of Reclamation **(Attached)**

Walker, Crystal

From: Walker, Crystal
Sent: Wednesday, December 28, 2016 2:27 PM
To: Cory Smith; Fields, Vanessa, EMNRD; Whitney Thomas (l1thomas@blm.gov)
Cc: Trujillo, Fasho D; Farrell, Juanita R; GRP:SJBU Regulatory; Jones, Lisa; SJBU E-Team
Subject: RE: BGT Closure Notification: Congress 6E - DATE CHANGE

PLEASE NOT DATE CHANGE DUE TO SCHEDULING.

Anticipated State Date and Time: **THURSDAY, JANUARY 5th, 2017 at 10:00AM**

The subject well has a below-grade tank that will begin the closure process between 72 hours and one week from this notification. Please contact me at any time if you have any questions or concerns.

Well Name: Congress 6E

API#: 30-045-24838

Location: O – 25 – 39N – 11W

Footages: 990' FSL & 1790' FEL

Operator: Burlington Resources

Surface Owner: FEDERAL

Thank you,
Crystal Walker
Regulatory Coordinator
ConocoPhillips Lower 48

T: 505-326-9837 | M: 505-793-2398 | crystal.walker@cop.com

Visit the new Lower 48 website:
www.conocophillipsuslower48.com

District I
1625 N. French Dr., Hobbs, NM 88240
District II
1301 W. Grand Avenue, Artesia, NM 88210
District III
1000 Rio Brazos Road, Aztec, NM 87410
District IV
1220 S. St. Francis Dr., Santa Fe, NM 87505

State of New Mexico
Energy Minerals and Natural Resources
Oil Conservation Division
1220 South St. Francis Dr.
Santa Fe, NM 87505

Form C-141
Revised August 8, 2011

Submit 1 Copy to appropriate District Office to
accordance with 19.15.29 NMAC.

Release Notification and Corrective Action

OPERATOR


☐ Initial Report ☒ Final Report

Name of Company Burlington Resources	Contact Christine Brock	
Address 3401 East 30 th St, Farmington, NM	Telephone No.(505) 326-9775	
Facility Name: Congress 6E	Facility Type: Gas Well	
Surface Owner Federal	Mineral Owner	API No. 30-045-24838

LOCATION OF RELEASE

Unit Letter O	Section 25 35	Township 34N 29	Range 11W	Feet from the 990	North/South Line South	Feet from the 1790	East/West Line East	County San Juan
Latitude 36.677847				Longitude -107-958438				

NATURE OF RELEASE

Type of Release	Volume of Release	Volume Recovered
Source of Release	Date and Hour of Occurrence	Date and Hour of Discovery
Was Immediate Notice Given? <input type="checkbox"/> Yes <input type="checkbox"/> No <input checked="" type="checkbox"/> Not Required	If YES, To Whom?	
By Whom?	Date and Hour	
Was a Watercourse Reached? <input type="checkbox"/> Yes <input checked="" type="checkbox"/> No	If YES, Volume Impacting the Watercourse.	
If a Watercourse was Impacted, Describe Fully.* N/A		
Describe Cause of Problem and Remedial Action Taken.* No release was encountered during the BGT Closure.		
Describe Area Affected and Cleanup Action Taken.* N/A		
I hereby certify that the information given above is true and complete to the best of my knowledge and understand that pursuant to NMOCD rules and regulations all operators are required to report and/or file certain release notifications and perform corrective actions for releases which may endanger public health or the environment. The acceptance of a C-141 report by the NMOCD marked as "Final Report" does not relieve the operator of liability should their operations have failed to adequately investigate and remediate contamination that pose a threat to ground water, surface water, human health or the environment. In addition, NMOCD acceptance of a C-141 report does not relieve the operator of responsibility for compliance with any other federal, state, or local laws and/or regulations.		
Signature: 	<u>OIL CONSERVATION DIVISION</u>	
Printed Name: Christine Brock	Approved by Environmental Specialist:	
Title: Regulatory Specialist	Approval Date:	Expiration Date:
E-mail Address: christine.brock@cop.com	Conditions of Approval:	Attached <input type="checkbox"/>
Date: 11/18/17 Phone: (505) 326-9775		

* Attach Additional Sheets If Necessary



January 16, 2017

Lisa Hunter
ConocoPhillips
San Juan Business Unit
(505) 326-9525

Via electronic mail to: SJBUE-Team@ConocoPhillips.com

**RE: Below Grade Tank Closure Report
Congress 6E
San Juan County, New Mexico**

Dear Ms. Hunter:

Animas Environmental Services, LLC (AES) is pleased to provide the final report associated with the below grade tank (BGT) closure at ConocoPhillips (COPC) Congress 6E, located in San Juan County, New Mexico. Tank removal was completed by COPC contractors on January 5, 2017, while AES was on site.

1.0 Site Information

1.1 Location

Site Name – Congress 6E

Legal Description – SW¼ SE¼, Section 35, T29N, R11W, San Juan County, New Mexico

Well Latitude/Longitude – N36.67806 and W107.95812, respectively

BGT Latitude/Longitude – N36.67785 and W107.95844, respectively

Land Jurisdiction – Bureau of Land Management (BLM)

Figure 1. Topographic Site Location Map

Figure 2. Aerial Site Map, January 2017

1.2 Depth to Groundwater Determination (NMAC 19.15.17.13 Table 1)

Prior to site work, the New Mexico Oil Conservation Division (NMOCD) database was reviewed, and the Form C-144 approved December 21, 2016, for the Congress 6E reported the depth to groundwater as greater than 100 feet below ground surface (bgs).

604 W. Piñon St.
Farmington, NM 87401
505-564-2281

1911 Main, Ste 206
Durango, CO 81301
970-403-3084

AES personnel further assessed the depth to water determination using topographical interpretation, Global Positioning System (GPS) elevation readings, and visual reconnaissance. AES personnel concluded that depth to groundwater at the site was greater than 100 feet bgs.

1.3 BGT Closure Assessment

AES was initially contacted by Lisa Hunter of COPC on December 26, 2016, and on January 5, 2017, Sam Glasses and Dave Johnson of AES mobilized to the location. AES personnel collected one 5-point soil sample (BGT SC-1) composited from four perimeter samples and one center sample of the BGT footprint from below the BGT liner.

2.0 Soil Sampling

2.1 Field Sampling

2.1.1 Volatile Organic Compounds

A portion of BGT SC-1 was utilized for field screening of volatile organic compound (VOC) vapors with a photo-ionization detector (PID) organic vapor meter (OVM). Before beginning field screening, the PID-OVM was first calibrated with 100 parts per million (ppm) isobutylene gas.

2.1.2 Total Petroleum Hydrocarbons

Soil sample BGT SC-1 was also analyzed in the field for total petroleum hydrocarbons (TPH) per U.S. Environmental Protection Agency (USEPA) Method 418.1 using a Buck Scientific Model HC-404 Total Hydrocarbon Analyzer Infrared Spectrometer (Buck). A 3-point calibration was completed prior to conducting soil analyses. Field analytical protocol followed AES's *Standard Operating Procedure: Field Analysis Total Petroleum Hydrocarbons per EPA Method 418.1*.

2.1.3 Chlorides

Soil sample BGT SC-1 was field screened for chlorides using Chloride Drop Count Titration with silver nitrate. Sampling and analysis methods followed procedures provided by Hach Company.

2.2 Laboratory Analyses

Soil sample BGT SC-1 was laboratory analyzed for:

- Benzene, toluene, ethylbenzene, and xylene (BTEX) per USEPA Method 8021B;
- TPH as Gasoline Range Organics (GRO), Diesel Range Organics (DRO), and Motor Oil Range Organics (MRO) per USEPA Method 8015M/D;

- TPH per USEPA Method 418.1; and
- Chloride per USEPA Method 300.0.

2.3 Field and Laboratory Analytical Results

Field sampling results and laboratory analytical results are summarized in Tables 1 and 2, respectively, and presented on Figure 2. The AES Field Sampling Report and the laboratory analytical report are attached.

Table 1. Soil Field VOCs, TPH, and Chloride Results
Congress 6E BGT Closure, January 2017

<i>Sample ID</i>	<i>Date Sampled</i>	<i>Depth below BGT (ft)</i>	<i>VOCs OVM Reading (ppm)</i>	<i>TPH 418.1 (mg/kg)</i>	<i>Field Chlorides (mg/kg)</i>
<i>NMOCD Action Level (NMAC 19.15.17.13 Table 1)</i>			--	2,500	20,000
BGT SC-1	1/5/17	0.5	0.0	20.4	40

Table 2. Soil Laboratory Analytical Results
Congress 6E BGT Closure, January 2017

<i>Sample ID</i>	<i>Date Sampled</i>	<i>Depth (ft)</i>	<i>Benzene (8021) (mg/kg)</i>	<i>Total BTEX (8021) (mg/kg)</i>	<i>TPH – GRO (8015) (mg/kg)</i>	<i>TPH – DRO (8015) (mg/kg)</i>	<i>TPH – MRO (8015) (mg/kg)</i>	<i>TPH (418.1) (mg/kg)</i>	<i>Chlorides (300.0) (mg/kg)</i>
<i>NMOCD Action Level (NMAC 19.15.17.13 Table 1)</i>			10	50		1,000		2,500	20,000
BGT SC-1	1/5/17	0.5	<0.017	<0.15	<3.3	<9.2	<46	<19	95

3.0 Conclusions and Recommendations

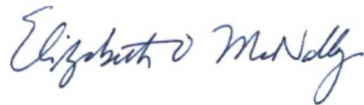
NMOCD action levels for BGT closures are specified in New Mexico Administrative Code (NMAC) 19.15.17.13 Table 1. Field TPH concentrations in BGT SC-1 were below the NMOCD action level of 2,500 mg/kg, with a concentration reported at 20.4 mg/kg. Benzene and total BTEX concentrations were below the NMOCD action levels of 10 mg/kg and 50 mg/kg, respectively. Laboratory analytical results reported TPH concentrations in BGT SC-1 (per USEPA Methods 8015 and 418.1) as below the NMOCD action levels. Chloride concentrations in BGT SC-1 were below the NMOCD action level of 20,000 mg/kg for depths to groundwater greater than 100 feet. Based on field sampling and laboratory analytical results for benzene, total BTEX, TPH, and chlorides, no further work is recommended at Congress 6E.

If you have any questions about this report or site conditions, please do not hesitate to contact Elizabeth McNally at (505) 564-2281.

Sincerely,



Victoria Giannola
Project Manager



Elizabeth McNally, P.E.

Attachments:

- Figure 1. Topographic Site Location Map
- Figure 2. Aerial Site Map, January 2017
- AES Field Sampling Report 010517
- Hall Analytical Report 1701197

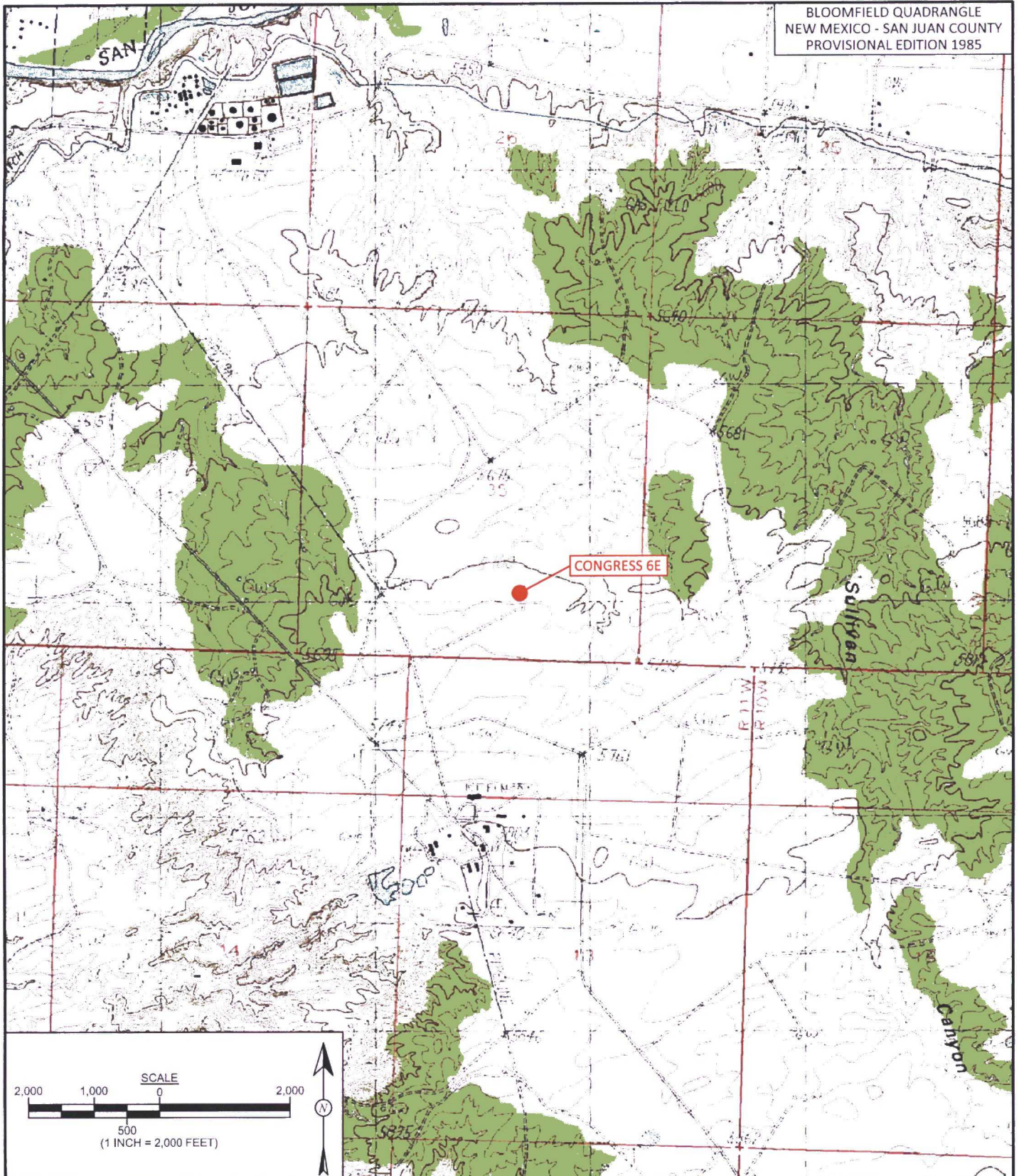


FIGURE 1

TOPOGRAPHIC SITE LOCATION MAP

ConocoPhillips
CONGRESS 6E
SW¼ SE¼, SECTION 35, T29N, R11W
SAN JUAN COUNTY, NEW MEXICO
N36.67806, W107.95812



**animas
environmental
services**

Farmington, NM • Durango, CO
animasenvironmental.com

DRAWN BY:
S. Glasses

DATE DRAWN:
January 5, 2017

REVISIONS BY:
S. Glasses

DATE REVISED:
January 5, 2017

CHECKED BY:
E. McNally

DATE CHECKED:
January 5, 2017

APPROVED BY:
E. McNally

DATE APPROVED:
January 5, 2017

LEGEND

● SAMPLE LOCATIONS

Field Sampling Results

Sample ID	Date	Depth (ft)	OVM-PID (ppm)	TPH (mg/kg)	Chlorides (mg/kg)
NMOCD ACTION LEVEL			--	2,500	20,000
BGT SC-1	1/5/17	0.5	0.0	20.4	40

BGT SC-1 IS A 5-POINT COMPOSITE SAMPLE.

Laboratory Analytical Results

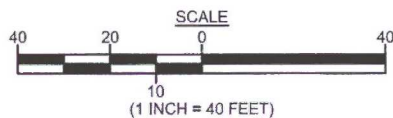
Sample ID	Date	Depth (ft)	Benzene (mg/kg)	Total BTEX (mg/kg)	TPH-GRO (mg/kg)	TPH-DRO (mg/kg)	TPH-MRO (mg/kg)	TPH 418.1 (mg/kg)	Chlorides (mg/kg)
NMOCD ACTION LEVEL			10	50	2,500			2,500	20,000
BGT SC-1	1/5/17	0.5	<0.017	<0.15	<3.3	<9.2	<46	<19	95

SAMPLE WAS ANALYZED PER USEPA METHOD 8021B, 8015, 418.1 AND 300.0.

CONGRESS 6E WELL MONUMENT

BGT SC-1

BELOW GRADE TANK
N36.67785, W107.95844



AERIAL SOURCE: © 2016 GOOGLE EARTH PRO, AERIAL DATE: MARCH 15, 2015



**animas
environmental
services**
Farmington, NM • Durango, CO
animasenvironmental.com

DRAWN BY:
S. Glasses

DATE DRAWN:
January 5, 2017

REVISIONS BY:
C. Lameman

DATE REVISED:
January 16, 2017

CHECKED BY:
E. McNally

DATE CHECKED:
January 16, 2017

APPROVED BY:
E. McNally

DATE APPROVED:
January 16, 2017

FIGURE 2

**AERIAL SITE MAP
BELOW GRADE TANK CLOSURE
JANUARY 2017**
ConocoPhillips
CONGRESS 6E
SW¼, SE¼, SECTION 35, T29N, R11W
SAN JUAN COUNTY, NEW MEXICO
N36.67806, W107.95812

AES Field Sampling Report

Animas Environmental Services, LLC



Client: ConocoPhillips

Project Location: Congress 6E

Date: 1/5/2017

Matrix: Soil

Sample ID	Collection Date	Collection Time	Sample Location	OVM (ppm)	Field Chloride (mg/kg)	Field TPH* (mg/kg)	Field TPH Analysis Time	TPH PQL (mg/kg)	DF	TPH Analysts Initials
BGT SC-1	1/5/2017	10:42	Composite	0.0	40	20.4	11:08	20.0	1	SHG

DF Dilution Factor

NA Not Analyzed

PQL Practical Quantitation Limit

*Field TPH concentrations recorded may be below PQL.

Field Chloride - Quantab Chloride Titrators or Drop Count

Titration with Silver Nitrate

Total Petroleum Hydrocarbons - USEPA 418.1

Analyst:



Hall Environmental Analysis Laboratory
4901 Hawkins NE
Albuquerque, NM 87109
TEL: 505-345-3975 FAX: 505-345-4107
Website: www.hallenvironmental.com

January 10, 2017

Corwin Lameman
Animas Environmental
604 Pinon Street
Farmington, NM 87401
TEL: (505) 564-2281
FAX

RE: COPC Congress 6E P&A

OrderNo.: 1701197

Dear Corwin Lameman:

Hall Environmental Analysis Laboratory received 1 sample(s) on 1/6/2017 for the analyses presented in the following report.

These were analyzed according to EPA procedures or equivalent. To access our accredited tests please go to www.hallenvironmental.com or the state specific web sites. In order to properly interpret your results it is imperative that you review this report in its entirety. See the sample checklist and/or the Chain of Custody for information regarding the sample receipt temperature and preservation. Data qualifiers or a narrative will be provided if the sample analysis or analytical quality control parameters require a flag. When necessary, data qualifiers are provided on both the sample analysis report and the QC summary report, both sections should be reviewed. All samples are reported, as received, unless otherwise indicated. Lab measurement of analytes considered field parameters that require analysis within 15 minutes of sampling such as pH and residual chlorine are qualified as being analyzed outside of the recommended holding time.

Please don't hesitate to contact HEAL for any additional information or clarifications.

ADHS Cert #AZ0682 -- NMED-DWB Cert #NM9425 -- NMED-Micro Cert #NM0190

Sincerely,

Andy Freeman
Laboratory Manager
4901 Hawkins NE
Albuquerque, NM 87109

Hall Environmental Analysis Laboratory, Inc.

Analytical Report

Lab Order 1701197

Date Reported: 1/10/2017

CLIENT: Animas Environmental
Project: COPC Congress 6E P&A
Lab ID: 1701197-001

Client Sample ID: BGT SC-1
Collection Date: 1/5/2017 10:42:00 AM
Matrix: MEOH (SOIL) **Received Date:** 1/6/2017 8:00:00 AM

Analyses	Result	PQL	Qual	Units	DF	Date Analyzed	Batch
EPA METHOD 418.1: TPH							Analyst: MAB
Petroleum Hydrocarbons, TR	ND	19		mg/Kg	1	1/10/2017	29589
EPA METHOD 300.0: ANIONS							Analyst: MRA
Chloride	95	30		mg/Kg	20	1/6/2017 12:33:13 PM	29576
EPA METHOD 8015M/D: DIESEL RANGE ORGANICS							Analyst: TOM
Diesel Range Organics (DRO)	ND	9.2		mg/Kg	1	1/9/2017 1:03:35 PM	29572
Motor Oil Range Organics (MRO)	ND	46		mg/Kg	1	1/9/2017 1:03:35 PM	29572
Surr: DNOP	98.2	70-130		%Rec	1	1/9/2017 1:03:35 PM	29572
EPA METHOD 8015D: GASOLINE RANGE							Analyst: NSB
Gasoline Range Organics (GRO)	ND	3.3		mg/Kg	1	1/6/2017 3:35:27 PM	29549
Surr: BFB	85.4	68.3-144		%Rec	1	1/6/2017 3:35:27 PM	29549
EPA METHOD 8021B: VOLATILES							Analyst: NSB
Benzene	ND	0.017		mg/Kg	1	1/6/2017 3:35:27 PM	29549
Toluene	ND	0.033		mg/Kg	1	1/6/2017 3:35:27 PM	29549
Ethylbenzene	ND	0.033		mg/Kg	1	1/6/2017 3:35:27 PM	29549
Xylenes, Total	ND	0.067		mg/Kg	1	1/6/2017 3:35:27 PM	29549
Surr: 4-Bromofluorobenzene	95.0	80-120		%Rec	1	1/6/2017 3:35:27 PM	29549

Refer to the QC Summary report and sample login checklist for flagged QC data and preservation information.

Qualifiers:	*	Value exceeds Maximum Contaminant Level.	B	Analyte detected in the associated Method Blank
	D	Sample Diluted Due to Matrix	E	Value above quantitation range
	H	Holding times for preparation or analysis exceeded	J	Analyte detected below quantitation limits
	ND	Not Detected at the Reporting Limit	P	Sample pH Not In Range
	R	RPD outside accepted recovery limits	RL	Reporting Detection Limit
	S	% Recovery outside of range due to dilution or matrix	W	Sample container temperature is out of limit as specified

QC SUMMARY REPORT

Hall Environmental Analysis Laboratory, Inc.

WO#: 1701197

10-Jan-17

Client: Animas Environmental

Project: COPC Congress 6E P&A

Sample ID	MB-29576	SampType:	mblk	TestCode:	EPA Method 300.0: Anions					
Client ID:	PBS	Batch ID:	29576	RunNo:	39877					
Prep Date:	1/6/2017	Analysis Date:	1/6/2017	SeqNo:	1249869	Units:	mg/Kg			
Analyte	Result	PQL	SPK value	SPK Ref Val	%REC	LowLimit	HighLimit	%RPD	RPDLimit	Qual
Chloride	ND	1.5								

Sample ID	LCS-29576	SampType:	lcs	TestCode:	EPA Method 300.0: Anions					
Client ID:	LCSS	Batch ID:	29576	RunNo:	39877					
Prep Date:	1/6/2017	Analysis Date:	1/6/2017	SeqNo:	1249870	Units:	mg/Kg			
Analyte	Result	PQL	SPK value	SPK Ref Val	%REC	LowLimit	HighLimit	%RPD	RPDLimit	Qual
Chloride	14	1.5	15.00	0	95.2	90	110			

Qualifiers:

- | | |
|---|---|
| * Value exceeds Maximum Contaminant Level. | B Analyte detected in the associated Method Blank |
| D Sample Diluted Due to Matrix | E Value above quantitation range |
| H Holding times for preparation or analysis exceeded | J Analyte detected below quantitation limits |
| ND Not Detected at the Reporting Limit | P Sample pH Not In Range |
| R RPD outside accepted recovery limits | RL Reporting Detection Limit |
| S % Recovery outside of range due to dilution or matrix | W Sample container temperature is out of limit as specified |

QC SUMMARY REPORT

Hall Environmental Analysis Laboratory, Inc.

WO#: 1701197

10-Jan-17

Client: Animas Environmental
Project: COPC Congress 6E P&A

Sample ID	MB-29589	SampType:	MBLK	TestCode:	EPA Method 418.1: TPH					
Client ID:	PBS	Batch ID:	29589	RunNo:	39931					
Prep Date:	1/9/2017	Analysis Date:	1/10/2017	SeqNo:	1251353	Units:	mg/Kg			
Analyte	Result	PQL	SPK value	SPK Ref Val	%REC	LowLimit	HighLimit	%RPD	RPDLimit	Qual
Petroleum Hydrocarbons, TR	ND	20								

Sample ID	LCS-29589	SampType:	LCS	TestCode:	EPA Method 418.1: TPH					
Client ID:	LCSS	Batch ID:	29589	RunNo:	39931					
Prep Date:	1/9/2017	Analysis Date:	1/10/2017	SeqNo:	1251354	Units:	mg/Kg			
Analyte	Result	PQL	SPK value	SPK Ref Val	%REC	LowLimit	HighLimit	%RPD	RPDLimit	Qual
Petroleum Hydrocarbons, TR	96	20	100.0	0	95.7	80.7	121			

Sample ID	LCSD-29589	SampType:	LCSD	TestCode:	EPA Method 418.1: TPH					
Client ID:	LCSS02	Batch ID:	29589	RunNo:	39931					
Prep Date:	1/9/2017	Analysis Date:	1/10/2017	SeqNo:	1251355	Units:	mg/Kg			
Analyte	Result	PQL	SPK value	SPK Ref Val	%REC	LowLimit	HighLimit	%RPD	RPDLimit	Qual
Petroleum Hydrocarbons, TR	91	20	100.0	0	90.7	80.7	121	5.38	20	

Qualifiers:

- | | |
|---|---|
| * Value exceeds Maximum Contaminant Level. | B Analyte detected in the associated Method Blank |
| D Sample Diluted Due to Matrix | E Value above quantitation range |
| H Holding times for preparation or analysis exceeded | J Analyte detected below quantitation limits |
| ND Not Detected at the Reporting Limit | P Sample pH Not In Range |
| R RPD outside accepted recovery limits | RL Reporting Detection Limit |
| S % Recovery outside of range due to dilution or matrix | W Sample container temperature is out of limit as specified |

QC SUMMARY REPORT

Hall Environmental Analysis Laboratory, Inc.

WO#: 1701197

10-Jan-17

Client: Animas Environmental
Project: COPC Congress 6E P&A

Sample ID	LCS-29572		SampType: LCS		TestCode: EPA Method 8015M/D: Diesel Range Organics					
Client ID:	LCSS		Batch ID: 29572		RunNo: 39896					
Prep Date:	1/6/2017		Analysis Date: 1/9/2017		SeqNo: 1250561		Units: mg/Kg			
Analyte	Result	PQL	SPK value	SPK Ref Val	%REC	LowLimit	HighLimit	%RPD	RPDLimit	Qual
Diesel Range Organics (DRO)	47	10	50.00	0	94.5	63.8	116			
Surr: DNOP	4.6		5.000		93.0	70	130			

Sample ID	MB-29572	SampType:	MBLK		TestCode:	EPA Method 8015M/D: Diesel Range Organics				
Client ID:	PBS	Batch ID:	29572		RunNo:	39896				
Prep Date:	1/6/2017	Analysis Date:	1/9/2017		SeqNo:	1250562		Units: mg/Kg		
Analyte	Result	PQL	SPK value	SPK Ref Val	%REC	LowLimit	HighLimit	%RPD	RPDLimit	Qual
Diesel Range Organics (DRO)	ND	10								
Motor Oil Range Organics (MRO)	ND	50								
Surr: DNOP	9.8		10.00		98.4	70	130			

Qualifiers:

- | | |
|---|---|
| * Value exceeds Maximum Contaminant Level. | B Analyte detected in the associated Method Blank |
| D Sample Diluted Due to Matrix | E Value above quantitation range |
| H Holding times for preparation or analysis exceeded | J Analyte detected below quantitation limits |
| ND Not Detected at the Reporting Limit | P Sample pH Not In Range |
| R RPD outside accepted recovery limits | RL Reporting Detection Limit |
| S % Recovery outside of range due to dilution or matrix | W Sample container temperature is out of limit as specified |

QC SUMMARY REPORT

Hall Environmental Analysis Laboratory, Inc.

WO#: 1701197

10-Jan-17

Client: Animas Environmental
Project: COPC Congress 6E P&A

Sample ID	MB-29549		SampType: MBLK		TestCode: EPA Method 8015D: Gasoline Range					
Client ID:	PBS		Batch ID: 29549		RunNo: 39874					
Prep Date:	1/5/2017		Analysis Date: 1/6/2017		SeqNo: 1250274		Units: mg/Kg			
Analyte	Result	PQL	SPK value	SPK Ref Val	%REC	LowLimit	HighLimit	%RPD	RPDLimit	Qual
Gasoline Range Organics (GRO)	ND	5.0								
Surr: BFB	850		1000		84.8	68.3	144			

Sample ID	LCS-29549		SampType: LCS		TestCode: EPA Method 8015D: Gasoline Range					
Client ID:	LCSS		Batch ID: 29549		RunNo: 39874					
Prep Date:	1/5/2017		Analysis Date: 1/6/2017		SeqNo: 1250275		Units: mg/Kg			
Analyte	Result	PQL	SPK value	SPK Ref Val	%REC	LowLimit	HighLimit	%RPD	RPDLimit	Qual
Gasoline Range Organics (GRO)	26	5.0	25.00	0	103	74.6	123			
Surr: BFB	930		1000		92.8	68.3	144			

Qualifiers:

* Value exceeds Maximum Contaminant Level.
D Sample Diluted Due to Matrix
H Holding times for preparation or analysis exceeded
ND Not Detected at the Reporting Limit
R RPD outside accepted recovery limits
S % Recovery outside of range due to dilution or matrix

B Analyte detected in the associated Method Blank
E Value above quantitation range
J Analyte detected below quantitation limits
P Sample pH Not In Range
RL Reporting Detection Limit
W Sample container temperature is out of limit as specified

QC SUMMARY REPORT

Hall Environmental Analysis Laboratory, Inc.

WO#: 1701197

10-Jan-17

Client: Animas Environmental
Project: COPC Congress 6E P&A

Sample ID	MB-29549		SampType:	MBLK		TestCode:	EPA Method 8021B: Volatiles			
Client ID:	PBS		Batch ID:	29549		RunNo:	39874			
Prep Date:	1/5/2017		Analysis Date:	1/6/2017		SeqNo:	1250298	Units:	mg/Kg	
Analyte	Result	PQL	SPK value	SPK Ref Val	%REC	LowLimit	HighLimit	%RPD	RPDLimit	Qual
Benzene	ND	0.025								
Toluene	ND	0.050								
Ethylbenzene	ND	0.050								
Xylenes, Total	ND	0.10								
Surr: 4-Bromofluorobenzene	0.94		1.000		93.5	80	120			

Sample ID	LCS-29549		SampType:	LCS		TestCode:	EPA Method 8021B: Volatiles			
Client ID:	LCSS		Batch ID:	29549		RunNo:	39874			
Prep Date:	1/5/2017		Analysis Date:	1/6/2017		SeqNo:	1250300	Units:	mg/Kg	
Analyte	Result	PQL	SPK value	SPK Ref Val	%REC	LowLimit	HighLimit	%RPD	RPDLimit	Qual
Benzene	1.1	0.025	1.000	0	111	75.2	115			
Toluene	1.0	0.050	1.000	0	104	80.7	112			
Ethylbenzene	1.0	0.050	1.000	0	101	78.9	117			
Xylenes, Total	3.0	0.10	3.000	0	101	79.2	115			
Surr: 4-Bromofluorobenzene	0.97		1.000		97.2	80	120			

Qualifiers:

* Value exceeds Maximum Contaminant Level.	B Analyte detected in the associated Method Blank
D Sample Diluted Due to Matrix	E Value above quantitation range
H Holding times for preparation or analysis exceeded	J Analyte detected below quantitation limits
ND Not Detected at the Reporting Limit	P Sample pH Not In Range
R RPD outside accepted recovery limits	RL Reporting Detection Limit
S % Recovery outside of range due to dilution or matrix	W Sample container temperature is out of limit as specified



Hall Environmental Analysis Laboratory
4901 Hawkins NE
Albuquerque, NM 87109
TEL: 505-345-3975 FAX: 505-345-4107
Website: www.hallenvironmental.com

Sample Log-In Check List

Client Name: Animas Environmental

Work Order Number: 1701197

RcptNo: 1

Received by/date: aj 1/6/17

Logged By: Andy Jansson 1/6/2017 8:00:00 AM

Completed By: Andy Jansson 1/6/17

Reviewed By: aj 01/06/17

Chain of Custody

1. Custody seals intact on sample bottles? Yes ☐ No ☐ Not Present ☒
2. Is Chain of Custody complete? Yes ☒ No ☐ Not Present ☐
3. How was the sample delivered? Courier

Log In

4. Was an attempt made to cool the samples? Yes ☒ No ☐ NA ☐
5. Were all samples received at a temperature of $>0^{\circ}\text{C}$ to 6.0°C ? Yes ☒ No ☐ NA ☐
6. Sample(s) in proper container(s)? Yes ☒ No ☐
7. Sufficient sample volume for indicated test(s)? Yes ☒ No ☐
8. Are samples (except VOA and ONG) properly preserved? Yes ☒ No ☐
9. Was preservative added to bottles? Yes ☐ No ☒ NA ☐
10. VOA vials have zero headspace? Yes ☐ No ☐ No VOA Vials ☒
11. Were any sample containers received broken? Yes ☐ No ☒
12. Does paperwork match bottle labels? Yes ☒ No ☐
(Note discrepancies on chain of custody)
13. Are matrices correctly identified on Chain of Custody? Yes ☒ No ☐
14. Is it clear what analyses were requested? Yes ☒ No ☐
15. Were all holding times able to be met? Yes ☒ No ☐
(If no, notify customer for authorization.)

of preserved
bottles checked
for pH: _____
(<2 or >12 unless noted)
Adjusted? _____
Checked by: _____

Special Handling (if applicable)

16. Was client notified of all discrepancies with this order? Yes ☐ No ☐ NA ☒

Person Notified: _____ Date: _____
By Whom: _____ Via: ☐ eMail ☐ Phone ☐ Fax ☐ In Person
Regarding: _____
Client Instructions: _____

17. Additional remarks:

18. Cooler Information

Cooler No	Temp $^{\circ}\text{C}$	Condition	Seal Intact	Seal No	Seal Date	Signed By
1	1.0	Good	Yes			

If necessary, samples submitted to Hall Environmental be subcontracted to other accredited laboratories. This serves as notice of this possibility. Any sub-contracted data will be noted on the analytical report.



BURLINGTON
RESOURCES

ConocoPhillips

CONGRESS 6E
LATITUDE 36⁰ 40' 41"
LONGITUDE 107⁰ 57' 29"
SW/SE, 990' FSL & 1790' FEL
SEC.35 T029N R011W NMPM
NMSF-047020B
API NO. 30-045-24838
SAN JUAN COUNTY, NM ELEV 5717
EMERGENCY NUMBER (505) 324-5170
NO SMOKING NO TRESPASSING