

# W LYBROOK UNIT #713H

## Lybrook Mancos W

(page 1)

Spud: 12/14/16

Completed: 3/31/17

CONFIDENTIAL

SHL:1215' FSL & 1386' FWL

SE/4 SW/4 Section 8 (N), T23N, R8W

BHL: 1059' FSL & 2379' FEL

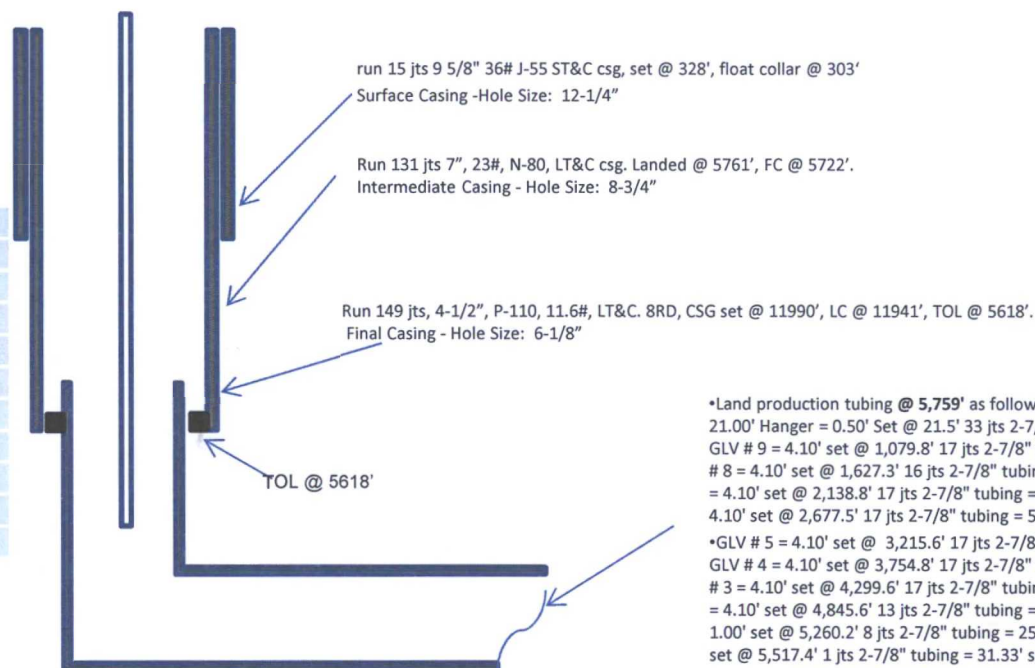
SW/4 SE/4 Section 17 (O), T23N, R8W

San Juan, NM

Elevation: 6823'

API: 30-045-35808

Formation	MD	TVD
OJO ALAMO	858	858
KIRTLAND	1066	1066
PICTURED CLIFFS	1442	1442
LEWIS	1553	1552
CHACRA	1814	1811
CLIFF HOUSE	2950	2883
MENEFEE	3003	2932
POINT LOOKOUT	3993	3845
MANCOS	4196	4031
GALLUP	4587	4402



\*Land production tubing @ 5,759' as follows: set tubing in 20K tension. KB = 21.00' Hanger = 0.50' Set @ 21.5' 33 jts 2-7/8" tubing = 1054.20' set @ 1,075.7' GLV # 9 = 4.10' set @ 1,079.8' 17 jts 2-7/8" tubing = 543.41' set @ 1,623.2' GLV # 8 = 4.10' set @ 1,627.3' 16 jts 2-7/8" tubing = 507.40' set @ 2,134.7' GLV # 7 = 4.10' set @ 2,138.8' 17 jts 2-7/8" tubing = 534.60' set @ 2,673.4' GLV # 6 = 4.10' set @ 2,677.5' 17 jts 2-7/8" tubing = 533.96' set @ 3,211.5'

\*GLV # 5 = 4.10' set @ 3,215.6' 17 jts 2-7/8" tubing = 535.17' set @ 3,750.7' GLV # 4 = 4.10' set @ 3,754.8' 17 jts 2-7/8" tubing = 540.70' set @ 4,295.5' GLV # 3 = 4.10' set @ 4,299.6' 17 jts 2-7/8" tubing = 541.90' set @ 4,841.5' GLV # 2 = 4.10' set @ 4,845.6' 13 jts 2-7/8" tubing = 413.58' set @ 5,259.2' X-nipple = 1.00' set @ 5,260.2' 8 jts 2-7/8" tubing = 253.13' set @ 5,513.3' GLV # 1 = 4.10' set @ 5,517.4' 1 jts 2-7/8" tubing = 31.33' set @ 5,548.8' Well dog guage mandrel = 4.10' set @ 5,552.9' 1 2-7/8" Pup Jt = 4.10' Set @ 5,557' 1 7" AS1X Packer w/ 2.25F Packer= 7.38' set @ 5,558.8' 1 Packer on off tool = 1.82' set @ 5,566.2' 1 cross over 2-3/8" pin x 2-7/8" box = 0.4' set @ 5,566.6' 5 Jts 2-3/8" tubing = 158.64' set @ 5,725.2' 1 1.875 XN nipple = 1' set @ 5,726.2' 1 Jt 2-3/8" tubing = 31.4" set @ 5,757.6' Mule Shoe = 1.35' set @ 5,759'

Mancos Frac-

5796'-11924' w/ .32" diameter- 4spf total of 595 holes. w/ 30

stages 20/40 sand total of 6,121,600#

TD: 11996' MD  
TVD: 5203'  
PBSD: 11941' MD

HOLE SIZE	CASING	CEMENT	VOLUME	CMT TOP
12-1/4"	9-5/8"	101sx	162cu.ft.	Surface
8-3/4"	7"	970 sx	1566cu. ft.	Surface
6-1/8"	4-1/2"	580sx	789 cu. ft.	TOL 5618'

LG 4/10/17