

UNITED STATES
DEPARTMENT OF THE INTERIOR
BUREAU OF LAND MANAGEMENT

2006 MAR 20 PM 1 57

FORM APPROVED
Budget Bureau No. 1004-0135
Expires: March 31, 1993

SUNDRY NOTICES AND REPORTS ON WELLS

Do not use this form for proposals to drill or to deepen or reentry to a different reservoir.
Use "APPLICATION FOR PERMIT---" for such proposals

SUBMIT IN TRIPLICATE

1. Type of Well

☒ Oil ☐ Gas ☐ Other

2. Name of Operator

Roddy Production Company, Inc.

3. Address and Telephone No.

P.O. Box 2221, Farmington NM 87499 (505) 325-5750

4. Location of Well (Footage, Sec., T., R., M., or Survey Description)

Surface location; 990' FSL x 990' FEL, Section 9, T23N, R3W

5. Lease Designation and Serial No.

Contract 412

6. If Indian, Allottee or Tribe Name

Jicarilla Apache

7. If Unit or CA, Agreement Designation

Chacon Jicarilla Apache 'D'

8. Well Name and No.

Chacon Jicarilla Apache 'D' No. 4

9. API Well No.

30-039-21258

10. Field and Pool, or Exploratory Area

West Lindrith Gallup-Dakota

11. County or Parish, State

Rio Arriba County, New Mexico

12. CHECK APPROPRIATE BOX(s) TO INDICATE NATURE OF NOTICE, REPORT, OR OTHER DATA

TYPE OF SUBMISSION

☐ Notice of Intent

☒ Subsequent Report

☐ Final Abandonment Notice

TYPE OF ACTION

☐ Abandonment

☐ Recompletion

☐ Plugging Back

☐ Casing Repair

☐ Altering Casing

☒ Other Return Dk to production

☐ Change of Plans

☐ New Construction

☐ Non-Routine Fracturing

☐ Water Shut-Off

☐ Conversion to Injection

☐ Dispose Water

(Note: Report results of multiple completion on Well Completion or Recompletion Report and Log form.)

13. Describe Proposed or Completed Operations (Clearly state all pertinent details, and give pertinent dates, including estimated date of starting any proposed work. If well is directionally drilled, give subsurface locations and measured and true vertical depth for all markers and zones pertinent to this work.)*

Roddy Production has placed cement from 5200' to 3338' and tested the Chacra formation as per the Sundry dated 7/15/05. The Chacra was not productive and the Chacra perforations were squeezed off. The well has been returned to production from the existing Dakota perforations. A well bore diagram and reports are attached.

14. I hereby certify that the foregoing is true and correct

Signed

Robert R. Griffie

Title Operations Manager

Date: 3/17/06

(This space for Federal or State office use)

Approved by

Conditions of approval, if any:

Title

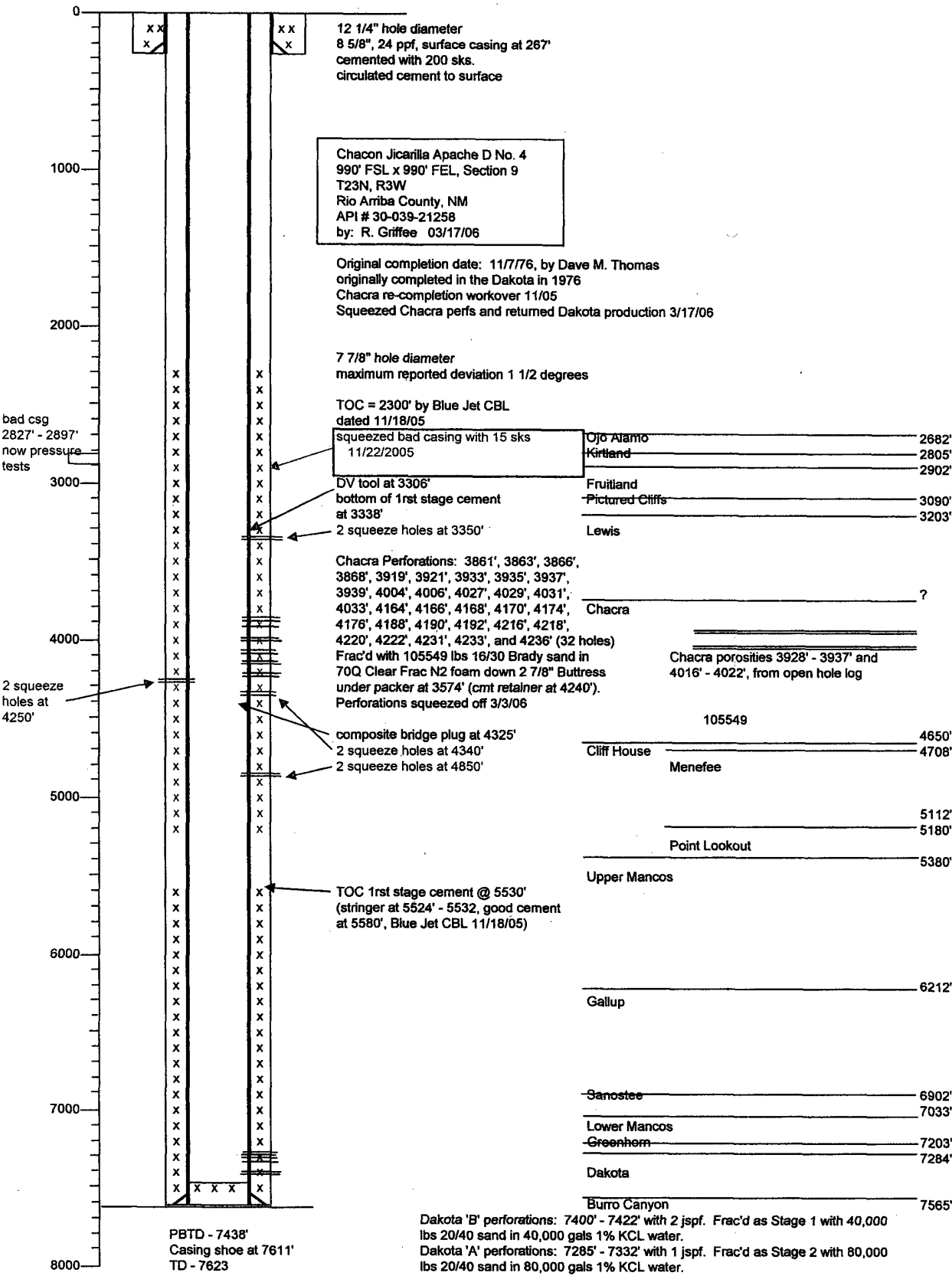
FARMINGTON FIELD OFFICE
BY

Title 18 U.S.C. Section 1001, makes it a crime for any person knowingly and willfully to make to any department or agency of the United States any false, fictitious or fraudulent statements or representations as to any matter within its jurisdiction.

*See Instruction on Reverse Side

NMOCD

Elevations: 7283' GL, 7297' RKB



4 1/2" 10.5 ppf and 11.6 ppf, K55, STC and LTC casing landed at 7611'
DV tool at 3306'. First stage cemented with 150 sks Halliburton "light" followed by
250 sks Pozmix 'A'. Second stage cemented with 100 sks Halliburton "light"
followed by 50 sks class 'b'.



**Roddy Production Co.
Chacon Jicarilla Apache D-4 Recompletion
Rig: TJR Rig 7**

**11-14-05
TJR 7**

MIRU TJR Rig 3. ND wellhead, NU BOP's. POH & tally production tubing. Tubing basically looked fine. Will round trip bit & scraper Tuesday, set plug & log Wednesday.

11-15-05

RIH w/ 3-7/8" bit, 4-1/2" scraper, & tubing to 7481' POH. Blue Jet to set plug & log 11-16-05.

11-16-05

RU Blue Jet W/L. Set 4-1/2" 10K Composite Bridge Plug @ 7200'. RIH open ended to 7174'. Circulate hole w/ 3% KCL. Got injection rate of approx. 1/2 bbl/min @ 250 PSI. POH. SDFN

11-17-05

RIH w/ packer. Set @ 7174' Test composite Bridge Plug to 500 PSI. OK. Find hole @2897' (no communication w/ bradenhead). POH & change out packer. (packing elements gone). RIH. Leak getting smaller. Will bleed down from 1000 PSI to 500 PSI in 5 min, to 220 PSI in 10 min. POH. SDFN

11-18-05

RU Bluejet W/L. Run CBL log from 7200' to surface. Shoot squeeze holes(2) @ 4850' & 3350'. RIH w/ packer. Set @ 3846'. Alternate pressure from annulus to tubing until full circulation is achieved. POH.

11-21-05

RIH w/ 4-1/2" Mechanical Set Cement Retainer. Set @ 4791' KB. Establish circulation down tubing. Good returns. RU Schlumberger. Establish Injection rate of 2-1/2 bbls per min @900 PSI. Squeeze cement under retainer with 410 sks 50/50 poz (13.5 ppg, 1.26 cf/sk). Lost circulation with approximately 32 bbls of slurry pumped. Cut rate. No circulation. Sting out, POH to 3006' Reverse. Small gray water returns. POH 5 stds. SDFN

11-22-05

POH w/ stinger. RIH w/ mechanical set drillable bridge plug. Set @2853'. Stinger out. RU Schlumberger. Spot 15 sx class 'G'. Slowly POH 8 stands. Reverse out. POH. Pressure up to 800 PSI, pump ¼ to ½ bbl. Hold @1000 PSI, no bleed off. SDFN.

11-23-05

MU 3-7/8" bit, six 3-1/8" drill collars. RIH. Tag cement @2681'. RU power swivel. Drill cement down to CIBP @2853'. Drill out CIBP. Work plug down to 4778'. SDFN.

11-28-05

POH w/ workstring. RU Blue Jet W/L. RIH w/ CBL logging tool. Could not get down past 4600'. Log 4600' – 3300'. NO cement. RIH w/ 3-7/8" mill & drill collars. Tag @4659'. Circulate hole clean. POH 10 stands. SDFN.

11-29-05

RIH, tag up @4659' RU power swivel. Drill & work CIBP bottom down to 4755'. Recovering metal shavings & cement. POH 50 stds. Will inspect & possibly change out mill in the am. SDFN.

11-30-05

POH. Inspect & replace mill. RIH, tag up @4659' RU power swivel. Drill & work CIBP bottom down to 4791'. Drill out cement retainer @ 4791'. Recovering metal shavings & cement. Drill out cement to 4860'. POH 50 stds. SDFN.

12-01-05

POH. RU Blue Jet W/L. Run CBL Logging tool from 5600'. Cement @ 5300' & a little @ 4850'. RIH w/ test packer. Set @3395'. Establish suicide circulation @ 2 bbls/min @ 650psi. POH to 3306' Test backside to 1000 psi. POH w/ test packer. RIH w/ 4-1/2" cement retainer to 3306'. SDFN.

12-02-05

RIH. Set Cement Retainer @ 4760'. RU Schlumberger cement crew. Establish injection rate of 1-1/2 bbls/min @1300 psi. Pump 200 sx 13.5 50/50 G poz, 2% gel, Cemnet 2#/bbl. Lost circulation after 8 bbls. Pressure fell to 450-500 psi @ 2 bbls/min, 100 psi @ 1.3 bbls/min then rose to 800 psi near end of flush. Sting out & POH to 3365'. Reverser out w/ no cement returns. POH. RIH w/ 3-7/8" bit, 4 drill collars & tubing to 3108'. SDFN

12-03-05

RIH. Tag cement @ 4748'. RU power swivel, drill out cement retainer and cement to 4859'. Circulate hole clean. POH. SDFN.

12-05-05

RU Blue Jet W/L. Run CBL log from 5300' (old TOC) to 3300'. Shoot squeeze holes (2) @ 4340'. RIH w/ test packer. Set @ 3408'. Establish circulation of 2-1/2 bbls @ 500 psi. POH. RIH w/ cement retainer to 3244'. SDFN.

12-06-05

Change out rig pumps. Wait on cement. SDFN.

12-07-05

RIH. Set Cement Retainer @ 4292'. RU Schlumberger. Establish injection rate of 700 psi @ 2 bbls/min. Pump 300 sks 13.5 50/50 G poz, 2% gel, Cemnet 2#/bbl. Circulation drops off to a trickle after 19 bbls. Pressure fell to 450-500 psi @ 2 bbls/min, rose to 1100 psi @ 1.4 bbls/min near end of flush. Sting out & POH to 3387'. Reverse out w/ no cement returns, approximately 35 bbls of drilling mud. POH. RIH w/ 3-7/8" bit, 4 drill collars & tubing to 3108'. SDFN

12-08-05

Unthaw lines & valves. RIH. Tag @4280'. Attempt to establish circulation, lose 70 bbls. Wait on water. Establish circulation. Start drilling out retainer & cement. Circulate hole clean. POH 10 stds. SDFN.

12-09-05

Unthaw lines & valves. RIH. Tag @4280'. Establish circulation, drill out retainer, Run out of water. Wait on water. Establish circulation. Start drilling out cement. Circulate hole clean. POH 10 stds. 15-20' cement left. Lost 90 bbls water. SDFN.

12-10-05

Unthaw lines & valves. RIH. Tag @4324'. Attempt to establish circulation, blew hole in swivel stand pipe. Repair swivel. Establish circulation. Drill out cement. Circulate hole clean. POH. RU Blue Jet. Run CBL from 4400' (TOC) to 3300'. Shoot 2 squeeze holes @ 4250'. SDFN.

12-12-05

RIH with test packer. Set @ 4307'. Test to 1000 psi (Old squeeze holes @ 4850' & 4340', plus Bridge plug @ 7200'). Hold for 10 minutes, OK. Set packer @ 3407'. Establish suicide circulation from 3350' -4250' 1-1/2 bbls min @ 400 psi f/20 bbls. Set packer @ 3313'. Test backside to 1000 psi for 10 minutes, OK. POH. RIH w/ cement retainer & leave hanging @ 2976'. SDFN.

12-13-05

RIH with cement retainer. Set @ 4199'. Wait on Schlumberger due to road conditions. RU Schlumberger. Establish suicide circulation from 4250 - 3350' of 1 bbl min @300 psi. 20 bbl gel w/ 2#/bbl Cemnet @ 1-1/2 bbl/min @400 psi followed by 17 bbls 3% KCL @1.4 bbl/min @550 psi. Shut down f/ 20 min. Start 20 bbl gel w/ 2#/bbl Cemnet @ 1 bbl/min @ 500 psi, followed by 125 sx 9.5# Litecrete (57 bbl) @ 1 bbl/min @600-700 psi. Displace w/ 15 bbl 3% KCL @ 1/2 bbl/min @ 1000 psi. Sting out from retainer. POH w/ no reverse out. Some cement residue around tubing & setting tool. RD Schlumberger. Will drill out Thursday 12-14-05. SDFN.

12-14-05

Rig on standby. Will drill out 12-15-05.

12-15-05

RIH w/ 3-7/8" rock bit. Tag @ 4172'. Pressure test squeeze holes @ 3350'. Pump rate of approx 1/2 bbl/min @ 500 psi. Will hold 150 psi with slow bleedoff. RU power swivel. Drill out cement retainer & 20' of cement. Circulate hole clean. POH 10 stds. SDFN. (Approx 30' of cement to drill in the am)

12-16-05

TIH. Finish drilling out cement & stringers down to 4300'. POH. RU Blue Jet W/L. Run CBL log from 4300' to 3300'. Run GSL log from 4530' to 2800'. RD Blue Jet. SDFN.

TIH w/ squeeze packer. Test casing below 3350' OK. Set packer @ 3171'. SDFN.

12-20-05

POH w/ squeeze packer. RU Blue Jet W/L. Set composite bridge plug @ 4325'. RD Blue Jet. RIH w/ squeeze packer. Set @ 4016'. Attempt to test bridge plug to 2500 psi, will hold 1000 psi but bleed off @ 1500 psi. RIH to 4297'. Set packer. Test bridge plug to 2500 psi OK (squeeze hole @ 4250' leaking slightly). POH to 3297'. Set packer. Unable to establish injection rate. Pressures up to 1000 psi, bleed off to 750 psi in 5 minutes. POH w/ packer. RIH open ended to 3382'. Spot 1.6 bbls (approx 100 ft) Class G neat cement. POH 5 stands. Reverse out. Squeeze 5/8 bbl away @ 500 psi. POH. Pressure to 400 psi. Bled to 300 psi in 20 minutes. Holding 300 psi. SDFN.

12-21-05

RIH w/ 3-7/8 rock bit, 4 drill collars & tubing. Tag cement @ 3380'. Obtain injection rate of 1/4 to 1/2 bbl/min @ 500 psi. Drill out cement from 3380 – 3476' with some stringers. RIH to 4300' Circulate hole clean. POH. SDFN.

12-22-05

RIH w/ 4-1/2" squeeze packer. Set @ 3435'. RU Schlumberger. Obtain rate into backside hole (@ 3350') of .3 bbl/min @ 640 psi. Test down tubing to 1000 psi w/ slight bleed off. RIH to 4297' Test bridge plug to 2500 psi, OK. POH. RU Blue Jet W/L. Set cement retainer @ 4240'. RIH w/ stinger. Spot 10sx to 1/2 bbl from retainer. Sting in, Pressure up to 1000 psi, slow bleed off to 600 psi. Pressure back up to 1000 psi, no bleed off after 5 min. sting out & reverse out. Recovered nearly all cement. POH to 3367' Spot 15sx, POH. Pump in @ 600 psi, 1/4 - 1/2 bbl/min. After 3/4 bbl away Shut in for 30 minutes w/ slow bleed off to 360 psi. Pump 1/2 bbl @ 700 psi. Holding 500 psi after 10 minutes. Shut in, RD Schlumberger. SDFN.

12-27-05

POH. RIH w/ 3-7/8" bit & 4 collars. Tag cement @ 3207' Drill out to 3356'. Squeeze holes did not appear to pressure test, could be leaking off through pump. RIH to 4335'. Circulate hole clean w/ 3% KCL. POH. SDFN.

12-28-05

RIH open-ended to 4236'. Spot 260 gals 7-1/2% KCL. POH. RU Blue Jet W/L. Perforate as follows with one hole each at: 3861', 3863', 3866', 3868', 3919', 3921', 3933', 3935', 3937', 3939', 4004', 4006', 4027', 4029', 4031', 4033', 4164', 4166', 4168', 4170', 4174', 4176', 4188', 4190', 4192', 4216', 4218', 4220', 4222', 4231', 4233', and 4236' (32 perforations). RIH w 4-1/2" packer. Set @ 3579'. RU Schlumberger. Establish injection rate 1400-1700 psi @ 5bbls/min (broke down at 1500 psi). Pump 1500 gal 15% KCL spaced evenly with 50 balls with good ball action, balling out twice. Displace to perms. Release packer, POH. RH with W/L junk basket & gage ring. Recovered 48 balls w/ 37 hits (some twice). Changover pipe rams, slips, elevators, etc. Start frac string in hole. SDFN.

12-29-05

RIH w/ 4-1/2" Frac Packer & 111 joints 2-7/8" N-80 Buttress frac string. Set packer @ 3574'. Flange up w/ WSI Frac valve & head. RU Schlumberger, & Protechnics. Start on pad, frac pressure exceded 5000 psi rating for wellhead isolation flange. Anticipate needing at least 6500 psi of working pressure to overcome friction pressure caused by packer and 2 7/8" frac string. Pumped pre-pad and approximately 120 bbls of pad. Will change out frac valve and wellhead equipment and resume tomorrow. Will start out on pad. SDFN.

12-30-05

Change out 5000 psi WSI frac head assy with 10000 psi equipment. RU Schlumberger, & Protechnics. Frac with 40,841lbs 16/30 brady sand without propnet followed by 64,708 lbs 16/30 sand with propnet in 30,722 gals of 70Q clear frac LT N2 foam with 31,253 gals of 3% KCL (70Q dropped to 65Q on 2.5 ppg sand, max sand concentration was 3 ppg). Pad and all stages of sand tagged with Protechnics tracer. Max pressure - 7,700 psi. Average rate - 40 bpm. Had several good pressure breaks on 1 ppg sand. Flushed to top perf. Turn over to flowback crew. Initial flowback on 1/8" choke, changed after 2 hrs to 1/4" due to freezing & plugging. Flow back @ 900 psi w/ 21 bbls/hour water, N2 & light sand.

12-31-05

Flow @ 900 psi on 1/4" choke w/ 21 bbls/hour water & N2. Shut in from 9am - 11am waiting for water removal. Shut in pressure 1290 psi, restart flowback on 1/4" choke @ 950 psi w/ 21 bbls water/hr. 3:00 PM pressure @ 650 psi w/ N2, Lt sand, & 14 bbls water.

01-01-06

Flow @ 400 psi on 1/4" choke w/ 12 bbls/hour water & N2. 5:00AM 275 psi @ 8 bbls/hr. 7:00AM 210 psi @ 8 bbls/hr on 1/2" choke. 9:00am 112 psi @ 9bbls/hr, 12:00 50 psi @ 12 bbls/hr. 3:00 PM pressure @ 26 psi w/ gas, N2, Lt sand, & 13 bbls water. 4:00pm 16 psi w/ gas, N2, & 7 bbls/hr. 5:00pm shut in. 6:00pm 50 psi w/ gas, & 7 bbls/hr. 7:00pm 38 psi w/ gas & 8 bbls/hr. 8:00pm 30 psi w/ gas & 4 bbls/hr. 9:00pm 20 psi w/ gas & 4 bbls/hr. 10:00pm 20 psi w/ gas & 4 bbls/hr. 11:00pm shut in. Total water to date: 651 bbls.

01-02-06

Well shut in w/ 90 psi. Open up on 1/2" choke, flows down to 10 psi in 5 minutes. ND Frac valve, release packer. POH laying down frac string. Well kicked and flowed some water 5 times. SDFN.

01-03-06

AM casing pressure 200 psi. Bleeds down in 5 minutes. RIH to 1500'. Unload hole w/ little return. RIH to 3021', unload w/ air. Recover 5-6 bbls water. RIH to 3610' Tag fill or bridge. Clean out w/ air/mist to 3986'. Well making heavy sand & water. Recovered 70 bbls water. POH to 3841'. SDFN

01-04-06

AM casing pressure 390 psi. Bleeds down to 40 psi. RIH to 3955' Tag fill. Unload hole w/ air. Clean out w/ air/mist to cement retainer @ 4240'. Well making sand & clear water. Recovered 85 bbls. POH to 3841'. SDFN

01-05-06

AM casing pressure 290 psi. Bleeds down to 0 in 5 minutes. RIH to 4234' Tag fill. Unload hole w/ air. Recover 10 bbls water. Clean out w/ air/mist to cement retainer @ 4240'. Well making sand & clear reddish water. Recovered 55 bbls. Turn over to night crew. Overnight well made 28 bbls water, small amount of sand & some gas. Total recovery 889 bbls.

01-06-06

POH & lay down 104 jts. RIH & drill out cement retainer & cement @4240'. Clean out to bridge plug @ 4325'. Unload w/ air/mist. POH to 3841'. Recovered 25 bbls water. SDFN.

01-09-06

AM Casing pressure 10 PSI. RIH tag bridge plug @ 4325' (No fill). POH. RU Protechnics after frac logging tool w/ Phoenix Slickline. Run log from 3600' to 4325'. RIH w/ 3-7/8 bit to 4301. Unload w/ air. POH to 3841'. SDFN. Recovered 36 bbls water.

01-10-06

AM Casing pressure 10 PSI. RIH tag fill @ 4317' (8' fill). Unload hole w/ air. Recover 21 bbls. Obtain sample. Shut in f/ 1 hr. unload hole w/ air. Recover 17 bbls. Pump ½ gal soap. Shut in for 1.5 hrs. Builds to 10 PSI. Flows 4 bbls then dies. Unload w/ air. Recover 23 bbls. POH to 3841'. SDFN. Recovered 65 bbls water today.

01-11-06

AM Casing pressure 145 PSI. Bleeds off in 5 minutes. Little or no gas apparent. RIH. Tag @ 4325', unload hole w/ air. Recovered 12 bbls. POH. Lay down bit. RIH w/ notched collar, 1 joint 2-3/8, & seating nipple to 4300'. Pump ½ gal soap. Pressure up to 1000 psi w/ air. Shut in f/ 1 hour. Flows back f/ 1-1/2 hrs. Recovered 21 bbls. Unload hole w/ air, recover 7 bbls. Broach tubing to seating nipple. POH to 3841'. SDFN. Recovered 40 bbls water today.

01-12-06

AM Casing pressure 165 PSI. Bleeds off in 15 minutes. Little or no gas apparent. RIH. Tag @ 4325', unload hole w/ air. Recovered 8 bbls. Pull up. Land tubing @ 4240' w/ seating nipple 1 joint up. Broach tubing to seating nipple. ND BOP's, NU wellhead & flow lines. Release rig to Jicarilla D5. Shut down due to wind. Recovered 8 bbls water today. Total water recovered 1063 bbls.

Roddy Production Co, Inc
Chacon Jicarilla Apache D #4
TJR Rig #7 Brad Warburton – Wellsite Advisor

02-21-06

MIRU. ND wellhead, NU BOP's. SDFN.

02-22-06

AM Pressures: Tubing 0 psi, casing 0 psi. Unload hole w/ air (tubing @ 4240'). Recovered 25 bbls clear frac fluid. Shut in for 1 hour, unload w/ air, recovered 20 bbls. Shut in for 1 hour, unload w/ air, recovered 17 bbls. Shut in for 1 hour, unload w/ air, recovered 11 bbls. Shut in for 1 hour, unload w/ air, recovered 6 bbls. Shut in for 1 hour, unload w/ air, recovered 5 bbls. SDFN. Total fluid recovered today 84 bbls.

02-23-06

AM Pressures: Tubing 0 psi, casing 0 psi. Unload hole w/ air, Shut in for 1 hour 5 different times. POH w/ tubing. SDFN. Total fluid recovered today 64 bbls. Shut down until cement available 2-27-06.

02-24-06

Standby f/ rig & air package.

02-27-06

AM Pressures: casing 0 psi. RIH w/ 4-1/2" squeeze packer. Set @ 3705'. Load backside, test casing to 500 psi. RU Schlumberger. Establish injection rate of 2 bbls/min @ 0 psi. Pump 250 sx 15.8# Class 'G' blended slurry w/ antifoam, dispersant, & uniflac additives 2 bbls/min @ 700 psi, wash pumps & lines. Final shut in pressure 1036 psi. Shut in f/ 4 hrs. POH w/ packer. SDFN.

02-28-06

RIH w/ 3-7/8" rock bit. Tag cement @ 3761'. RU power swivel. Circulate hole clean. Drill out cement to 3189'. Shut rams, pressure up to 500 psi. Bleeds down to 150 psi in 1 minute, 0 psi in 7 minutes. Drill out to 3960', blew a stripping rubber out & there is not a spare on the rig. Circulate hole clean, POH 10 stands. Wait on parts. Change out stripping rubber. SDFN

03-01-06

RIH. Tag cement @ 3960'. RU power swivel. Circulate hole clean. Drill out cement falling out @ 4241'. Circulate hole clean, POH. RIH w/ 4-1/2 test packer. Set @ 3894'. Pump down tubing, circulates up backside @ 150 psi. RIH to 3961'. Pump down tubing, circulates up backside @ 150 psi. RIH to 4107'. Pump down tubing, circulates up backside @ 150 psi. RIH to 4250'. Pump down tubing, circulates up backside @ 150 psi. *Rig has no standing valve. Tool Pusher 'borrowed it'.* POH. Set packer 1 joint in. Test backside, no test. POH. SDFN.

03-02-06

RIH w/ new packer. Set @ 3894' Test down tubing to 500 psi f/ 15 minutes – OK. Test annulus. Bleeds off 100 psi in 10 minutes. POH w/ packer. RIH open-ended to 3894'. Will spot balanced cement plug 3-3-06 am. SDFN.

03-03-06

RU Schlumberger. Spot 25 sx 15.8# Class'G' balanced plug from 3894 up. POH 10 stands, reverse out. Squeeze in 1/3 bbl @ 400 psi. Shut in after 1 hour @ 320 psi. SDFN. Will drill out and test 3-4-06.

03-04-06

POH w/ tubing. RIH w/ 3-7/8" rock bit. Tag cement @ 3677'. RU power swivel. Drill out cement. Fall out @ 3898'. Test squeeze to 500 psi, bled off 200 psi in 10 minutes (test was conducted with well head isolated). POH 10 stands. SDFN.

03-06-06

RIH to composite bridge plug @ 4325'. PU power swivel. Drill out plug. Recovering top slip material & rubber. Bit plugged. POH. Plug nearly worn out. SDFN.

03-07-06

RIH unloading well every 10 stands to composite bridge plug @ 4325'. PU power swivel. Finish drilling out plug. Bottom of plug hanging up in every collar. Drill & push downhole to 6267'. Tubing pressures up too high, POH. Bottom joint is plugged w/ cement fines. SDFN.

03-08-06

RIH w/ 3-7/8" bit unloading well every 10 stands to 6267'. PU power swivel. Drill & push downhole to bridge plug @7200'. Drill out bridge plug & RIH & tag @7458'. Unload hole w/ air. Recovered little sand, plug parts & a bit of reddish water (Not enough to measure in flowback tank). POH 10 stands. SDFN.

03-09-06

AM Casing Pressure = 320 PSI. Well would not blow down. RIH to 7444'. Unload hole w/ air – NO water or oil recovered. POH. RIH w/ expendable check, 1 joint 2-3/8, seating nipple, 110 joints, 4-1/2" 'R-3' compression set full opening production packer. Run 2-3/8" broach thru packer & tubing to seating nipple. RIH w/125 joints tubing. Run broach, hung up approximately 3000'. POH. Locate & change out bad joint. RIH. Land tubing @ 7399' w/ seating nipple 1 joint up, & packer set @ 3888'. ND BOP's, NU wellhead & flowlines. Pump off expendable check. Gas immediately at surface. Release rig to Jic PC #9. SDFN.