

UNITED STATES
DEPARTMENT OF THE INTERIOR
BUREAU OF LAND MANAGEMENT

APPLICATION FOR PERMIT TO DRILL OR REENTER



FORM APPROVED
OMB No. 1004-0137
Expires March 31, 2007

5. Lease Serial No.
NM-012671

6. If Indian, Allottee or Tribe Name

1a. Type of work: ☒ DRILL ☐ REENTER

7. If Unit or CA Agreement, Name and No.
NM NM - 078416A - MV
NM NM - 078416B - DK

1b. Type of Well: ☐ Oil Well ☒ Gas Well ☐ Other ☐ Single Zone ☐ Multiple Zone

8. Lease Name and Well No.
SAN JUAN 29-6 UNIT #81F

2. Name of Operator
ConocoPhillips Company

9. API Well No. /

3a. Address
4001 Penbrook, Odessa, TX 79762

3b. Phone No. (include area code)
432-368-1230

10. Field and Pool, or exploratory
30 - 078416 - 19863
BLANCO MESAVERDE / BASIN
DAKOTA

4. Location of Well (Report location clearly and in accordance with any State requirements, *)

At surface SWSW 460 FSL - 295 FWL

At proposed prod. zone

11. Sec., T. R. M. or Blk. and Survey or Area
SECTION 25, T29N, R6W NMPM

14. Distance in miles and direction from nearest town or post office*

12. County or Parish
RIO ARriba

13. State
NM

15. Distance from proposed*
location to nearest
property or lease line, ft.
(Also to nearest drig. unit line, if any)

16. No. of acres in lease
713.88 ACRES

17. Spacing Unit dedicated to this well
MV & DK - 320.0 ACRES - W/2

18. Distance from proposed location*
to nearest well, drilling, completed,
applied for, on this lease, ft.

19. Proposed Depth
7787'

20. BLM/BIA Bond No. on file
ES0085

21. Elevations (Show whether DF, KDB, RT, GL, etc.)
6376' GL

22 Approximate date work will start*

23. Estimated duration

24. Attachments

The following, completed in accordance with the requirements of Onshore Oil and Gas Order No. 1, must be attached to this form:

1. Well plat certified by a registered surveyor.
2. A Drilling Plan.
- 3 A Surface Use Plan (if the location is on National Forest System Lands, the SUPO must be filed with the appropriate Forest Service office).

4. Bond to cover the operations unless covered by an existing bond on file (see Item 20 above).
5. Operator certification
6. Such other site specific information and/or plans as may be required by the BLM-

25. Signature
Title Senior Associate
Name (Printed/Typed) Peggy James
Date 3/27/2006

Approved by (Signature)
Title AFM
Name (Printed/Typed) FFO
Office FFO
Date 4/5/06

Application approval does not warrant or certify that the applicant holds legal or equitable title to those rights in the subject lease which would entitle the applicant to conduct operations thereon.
Conditions of approval, if any, are attached.

Title 18 U.S.C. Section 1001 and Title 43 U.S.C. Section 1212, make it a crime for any person knowingly and willfully to make to any department or agency of the United States any false, fictitious or fraudulent statements or representations as to any matter within its jurisdiction.

*(Instructions on page 2)

ConocoPhillips Company proposes to drill a vertical wellbore to the Blanco Mesaverde / Basin Dakota formations. This well will be drilled and equipped in accordance with the attachments submitted herewith. This application is for APD / ROW.

This well will be downhole commingled pursuant to the terms and conditions outlined in Order R-11363.

DRILLING OPERATIONS AUTHORIZED ARE
SUBJECT TO COMPLIANCE WITH ATTACHED
"GENERAL REQUIREMENTS".

This action is subject to technical and
procedural review pursuant to 43 CFR 3165.3
and appeal pursuant to 43 CFR 3165.4

NMOCD

District I
PO Box 1980, Hobbs, NM 88241-1980

District II
PO Drawer DD, Artesia, NM 88211-0719

District III
1000 Rio Brazos Rd., Aztec, NM 87410

District IV
PO Box 2088, Santa Fe, NM 87504-2088

State of New Mexico
Energy, Minerals & Natural Resources Department

OIL CONSERVATION DIVISION
PO Box 2088
Santa Fe, NM 87504-2088

Form C-102

Revised February 21, 1994

Instructions on back
Submit to Appropriate District Office
State Lease - 4 Copies
Fee Lease - 3 Copies

☐ AMENDED REPORT

WELL LOCATION AND ACREAGE DEDICATION PLAT

*API Number 30-039-29863		*Pool Code 72319 / 71599	*Pool Name BLANCO MESAVERDE / BASIN DAKOTA
*Property Code 31326 ✓	*Property Name SAN JUAN 29-6 UNIT		*Well Number 81F ✓
*GRID No. 217817 ✓	*Operator Name CONOCOPHILLIPS COMPANY ✓		*Elevation 6376' ✓

¹⁰ Surface Location

UL or lot no.	Section	Township	Range	Lot Idn	Feet from the	North/South line	Feet from the	East/West line	County
M	25	29N	6W		460	SOUTH	295	WEST	RIO ARriba

¹¹ Bottom Hole Location If Different From Surface

UL or lot no.	Section	Township	Range	Lot Idn	Feet from the	North/South line	Feet from the	East/West line	County
¹² Dedicated Acres 320.0 Acres - W/2 (MV) 320.0 Acres - W/2 (DK)					¹³ Joint or Infill	¹⁴ Consolidation Code	¹⁵ Order No.		

NO ALLOWABLE WILL BE ASSIGNED
TO THIS COMPLETION UNTIL ALL
INTERESTS HAVE BEEN CONSOLIDATED
OR A NON-STANDARD UNIT HAS BEEN
APPROVED BY THE DIVISION

¹⁷ OPERATOR CERTIFICATION

I hereby certify that the information
contained herein is true and complete
to the best of my knowledge and belief

Virgil E. Chavez
Signature
Virgil E. Chavez

Printed Name
Projects & Operations Lead

Title
February 13, 2006
Date

¹⁸ SURVEYOR CERTIFICATION

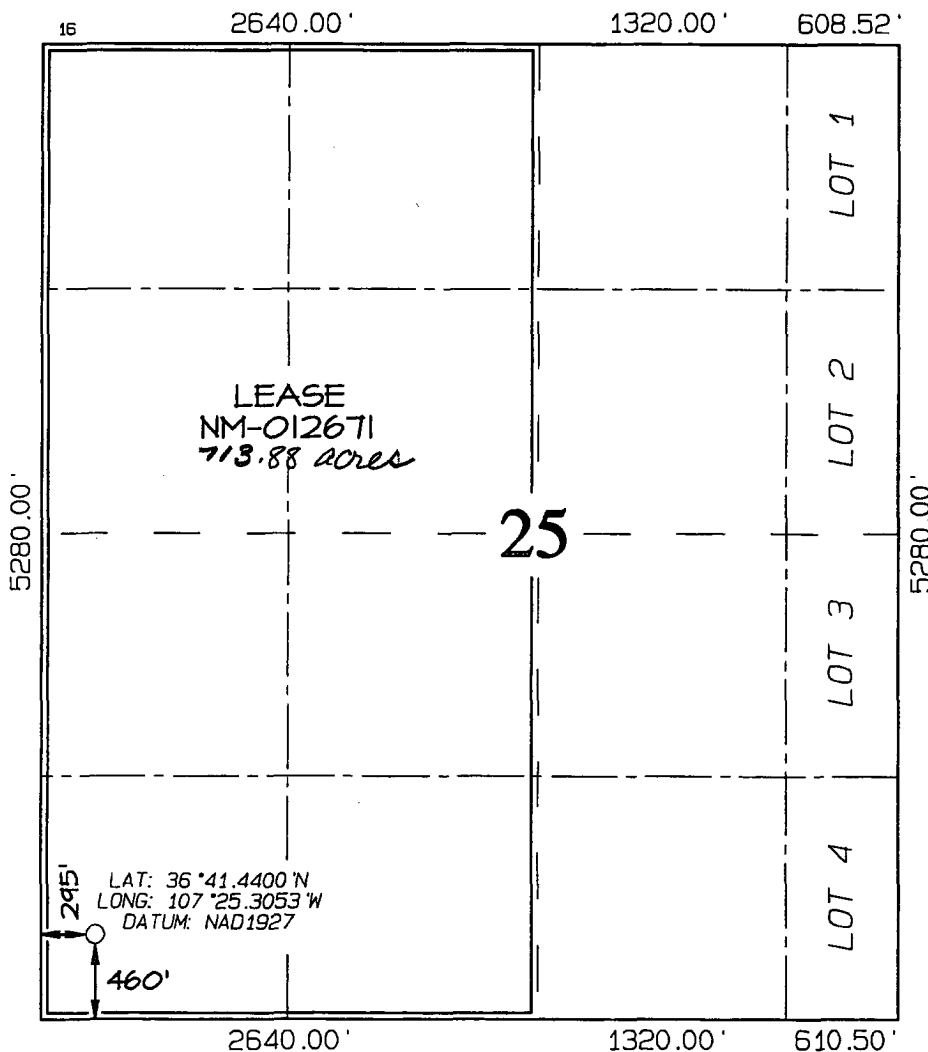
I hereby certify that the well location
shown on this plat was plotted from field
notes of actual surveys made by me or under
my supervision, and that the same is true
and correct to the best of my belief

Survey Date: DECEMBER 20, 2005

Signature and Seal of Professional Surveyor



JASON C. EDWARDS
Certificate Number 15269



Submit 3 Copies To Appropriate District Office

District I

1625 N. French Dr., Hobbs, NM 88240

District II

1301 W. Grand Ave., Artesia, NM 88210

District III

1000 Rio Brazos Rd., Aztec, NM 87410

District IV

1220 S. St. Francis Dr., Santa Fe, NM

87505

State of New Mexico
Energy, Minerals and Natural Resources

Form C-103

May 27, 2004

OIL CONSERVATION DIVISION
1220 South St. Francis Dr.
Santa Fe, NM 87505

WELL API NO.

30-039-27863

5. Indicate Type of Lease

STATE ☐ FEE ☐

6. State Oil & Gas Lease No.

7. Lease Name or Unit Agreement Name

SAN JUAN 29-6 UNIT

8. Well Number

81F

9. OGRID Number

217817

10. Pool name or Wildcat

BLANCO MESAVERDE / BASIN DAKOTA

SUNDRY NOTICES AND REPORTS ON WELLS

(DO NOT USE THIS FORM FOR PROPOSALS TO DRILL OR TO DEEPEN OR PLUG BACK TO A DIFFERENT RESERVOIR. USE "APPLICATION FOR PERMIT" (FORM C-101) FOR SUCH PROPOSALS.)

1. Type of Well: Oil Well ☐ Gas Well ☒ Other

2. Name of Operator

ConocoPhillips Company

3. Address of Operator

4001 Penbrook, Odessa, TX 79762

4. Well Location

Unit Letter M 460 feet from the SOUTH line and 295 feet from the WEST line

Section 25 Township 29N Range 6W NMPM RIO ARRIBA County

11. Elevation (Show whether DR, RKB, RT, GR, etc.)
6376' GL

Pit or Below-grade Tank Application ☒ Closure ☐

Pit type DRILL Depth to Groundwater 140' Distance from nearest fresh water well 417' Distance from nearest surface water <100'

Liner Thickness: 12 mil Below-Grade Tank: Volume 4400 bbls; Construction Material SYNTHETIC

12. Check Appropriate Box to Indicate Nature of Notice, Report or Other Data

NOTICE OF INTENTION TO:

PERFORM REMEDIAL WORK ☐ PLUG AND ABANDON ☐

TEMPORARILY ABANDON ☐ CHANGE PLANS ☐

PULL OR ALTER CASING ☐ MULTIPLE COMPL ☐

OTHER: ☐

SUBSEQUENT REPORT OF:

REMEDIAL WORK ☐ ALTERING CASING ☐

COMMENCE DRILLING OPNS. ☐ P AND A ☐

CASING/CEMENT JOB ☐

OTHER: ☐

13. Describe proposed or completed operations. (Clearly state all pertinent details, and give pertinent dates, including estimated date of starting any proposed work). SEE RULE 103. For Multiple Completions: Attach wellbore diagram of proposed completion or recompletion.

The pit will be constructed and closed in accordance with Rule 50 and as per COPC June 2005 General Pit Plan on file with the NMOCD. See the attached diagram that details the location of the pit in reference to the proposed wellhead. The drill pit will be lined. The drill pit will be closed after the well has been completed

I hereby certify that the information above is true and complete to the best of my knowledge and belief. I further certify that any pit or below-grade tank has been/will be constructed or closed according to NMOCD guidelines ☐ a general permit ☐ or an (attached) alternative OCD-approved plan ☐

SIGNATURE Peggy James TITLE Senior Associate

DATE 3/27/2006

Type or print name

E-mail address peggy.s.james@conocophillips.com

Telephone No.: (432)368-1230

For State Use Only

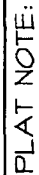
APPROVED BY:

Conditions of Approval (if any):

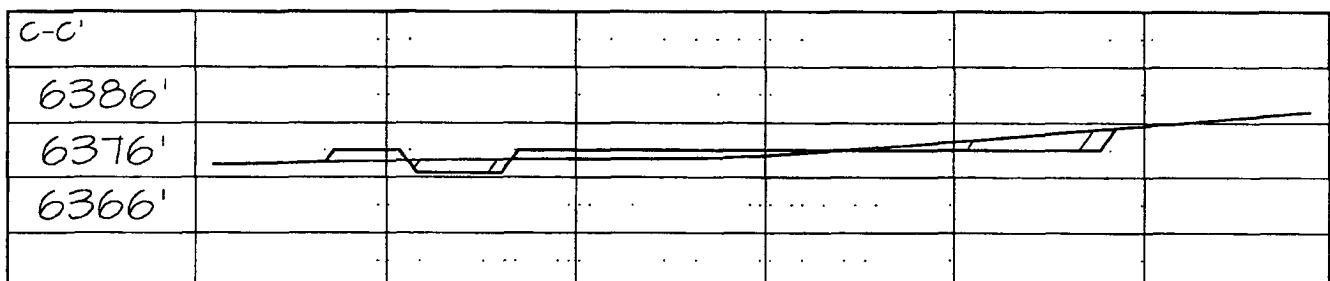
TITLE DEPUTY OIL & GAS INSPECTOR, DIST. DATE

APR 07 2006

LATITUDE: 36.69067° N
LONGITUDE: 107.42176° W
DATUM: NAD1927

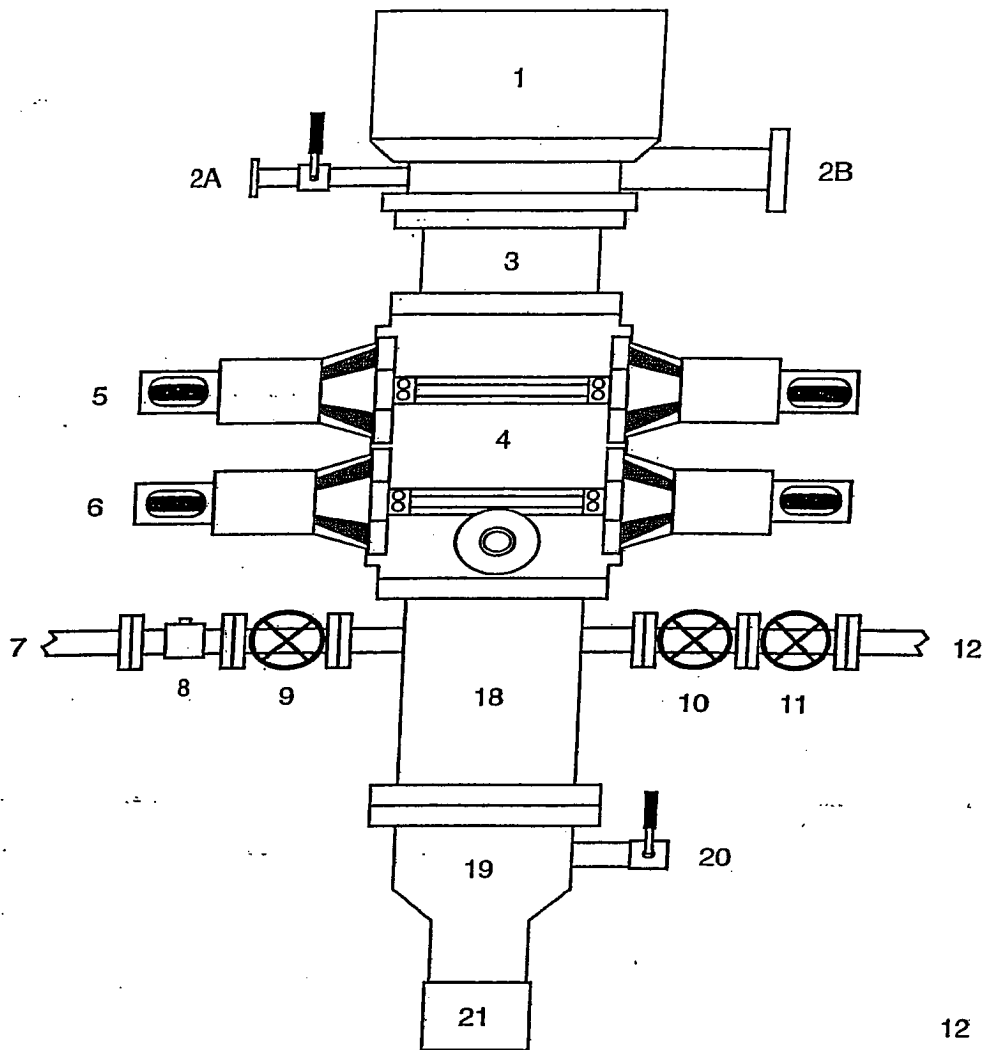


****SURFACE OWNER***
Bureau of Land
Management

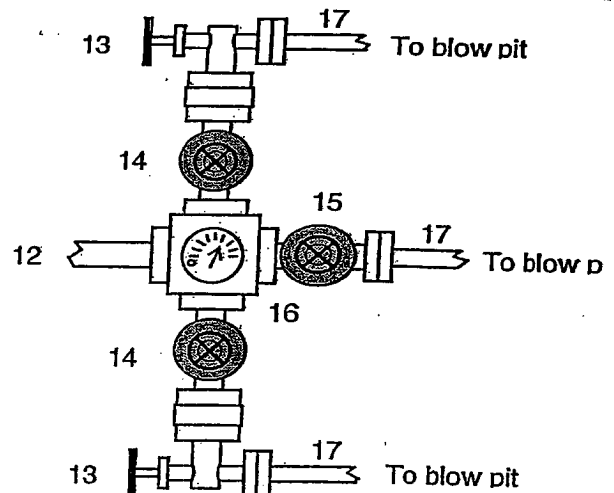


BLOWOUT PREVENTER ARRANGEMENT & PROGRAM

For Drilling to Intermediate Casing Point & Setting 7" Intermediate Casing



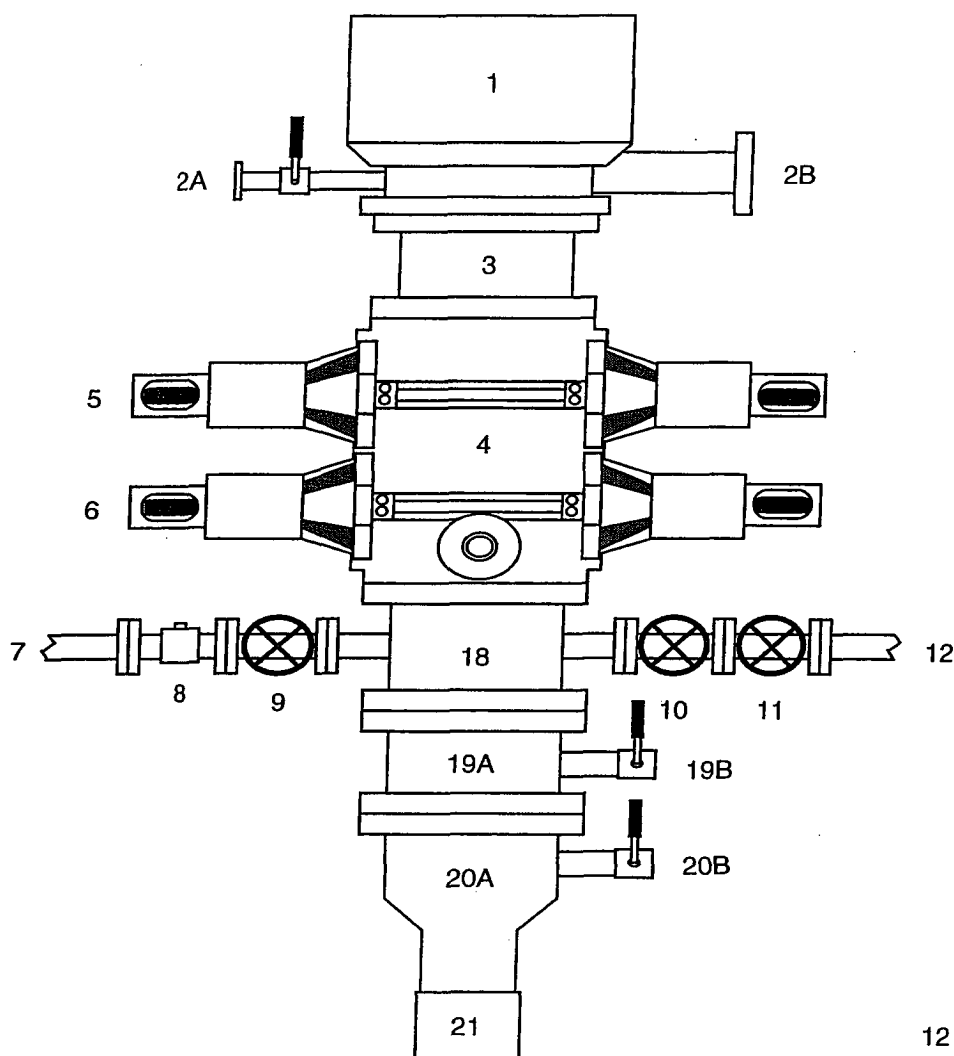
1. Rotating Head
- 2A. Fill-up Line & valve
- 2B. Flowline
3. Spacer Spool
4. Double Ram BOP (11", 3000 psi)
5. Pipe Rams
6. Blind Rams
7. Kill Line
8. Kill Line Check Valve
9. Kill Line Valve
10. Inner Choke Line Valve (3")
11. Outer Choke Line Valve (3")
12. Choke Line (3")
13. Variable Choke
14. Choke Line Valve (2")
15. Panic Line Valve (3")
16. Choke Manifold Pressure Gauge
17. Choke Line (2")
18. Mud Cross Spacer Spool
19. Casing Head "A" Section
20. Casing Head "A" Section 2" Valve
21. 9 5/8" Casing Collar



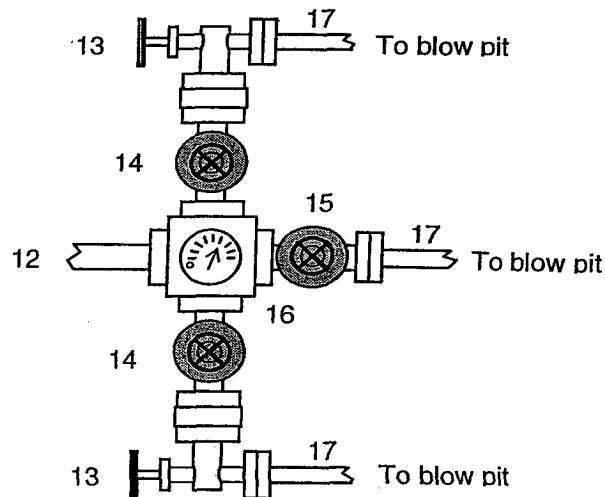
A 12-1/4" hole will be drilled to approximately 220' and the 9-5/8" surface casing will be run and cemented. The Casing Head "A" Section will be screwed onto the 9-5/8" surface casing stub. The BOP will be installed on the Casing Head "A" Section. A test plug will be set in the wellhead and the pipe rams and choke manifold will be tested to 200 psi to 300 psi (low pressure test) for 10 minutes and to 1000 psi (high pressure test) for 10 minutes. Then the test plug will be removed, and the 9-5/8" casing will be pressure tested against closed blind rams to 200 psi to 300 psi for 10 minutes and to 1000 psi for 30 minutes (this value is one 44% of the minimum internal yield pressure of the 9-5/8" casing). (Note: per regulatory requirements we will wait on cement at least 8 hrs after placement before testing the 9-5/8" surface casing). Then an 8-3/4" hole will be drilled to intermediate casing point and 7" intermediate casing will be run and cemented.

In addition to the equipment in the above diagram the following equipment will comprise the BOP system:

For Drilling to TD and Setting 4.5 inch Casing



1. Rotating Head
- 2A. Fill-up Line & valve
- 2B. Blooie Line (for Air Drilling)
3. Spacer Spool
4. Double Ram BOP (11", 3000 psi)
5. Pipe Rams
6. Blind Rams
7. Kill Line
8. Kill Line Check Valve
9. Kill Line Valve
- 10 Inner Choke Line Valve (3")
11. Outer Choke Line Valve (3")
12. Choke Line (3")
13. Variable Choke
14. Choke Line Valve (2")
15. Panic Line Valve (3")
16. Choke Manifold Pressure Gauge
17. Choke Line (2")
18. Mud Cross Spacer Spool
- 19A Csg Spool "B" Section (11", 3M)
- 19B "B" Section Csg Valve (2", 3M)
- 20A Csg Head "A" Section (11", 3M)
- 20B "A" Section Csg Valve (2", 3M)
21. 9 5/8" Casing Collar



In addition to the equipment in the above diagram the following equipment will comprise the BOP system:

- Revision Date: September 1, 2004

Property : SAN JUAN 29-6 UNIT **Well #:** 81F

Surface Location:

Unit: M **Section:** 25 **Township:** 29N **Range:** 6W

County: RIO ARRIBA **State:** New Mexico

Footage: 460 **from the** SOUTH **line,** 295 **from the** WEST **line.**

CATHODIC PROTECTION

ConocoPhillips (COP) proposes to drill a cathodic protection deep well groundbed for the subject well. COP will drill a hole vertically at the surface large enough to accommodate 20 feet of 8 inch diameter PVC pipe for surface casing to assist in further drilling and loading. Casing may be cemented in place for stability if needed. COP will drill a 6-7/8" hole to an anticipated minimum depth of 300' (maximum depth of 500'). Cement plugs will not be used unless more than one water zone is encountered. Prior drilling history for the area indicates only one zone to that depth. If more than one water zone is encountered, notification will be made and details of cement and casing will be provided.

All drilling activity will remain on the existing well pad and a Farmington based company will be doing the drilling for ConocoPhillips.