

UNITED STATES
DEPARTMENT OF THE INTERIOR
BUREAU OF LAND MANAGEMENT

APPLICATION FOR PERMIT TO DRILL OR REENTER

FORM APPROVED
OMB No. 1004-0136
Expires January 31, 2004

5. Lease Serial No.

NMNM-099732

6. If Indian, Allottee or Tribe Name

7. If Unit or CA Agreement, Name and No.

Federal 21-6-29

8. Lease Name and Well No.

3

9. API Well No.

30-043-21015

10. Field and Pool, or Exploratory

Basin Fruitland Coal

11. Sec., T., R., M., or Blk. and Survey or Area

Section 29, T21N, R6W

12. County or Parish

Sandoval

13. State

NM

1a. Type of Work: ☒ DRILL

☐ REENTER

1b. Type of Well: ☐ Oil Well ☒ Gas Well ☐ Other

☒ Single Zone

☐ Multiple Zone

2. Name of Operator

SG Interests I, LTD c/o NIKA Energy Operating

3a. Address

P.O. Box 2677 Durango, CO 81302

3b. Phone No. (include area code)

(970) 259-2701

4. Location of Well (Report location clearly and in accordance with any State requirements. *)

At surface Lot K: 1942' FSL & 2300' FWL

At proposed prod. zone

12. County or Parish

Sandoval

13. State

NM

14. Distance in miles and direction from nearest town or post office*

approximately 15 miles southeast of Lybrook, New Mexico

15. Distance from proposed*

location to nearest
property or lease line, ft.
(Also to nearest drig. unit line, if any)

1942'

16. No. of Acres in lease

2,361.92

17. Spacing Unit dedicated to this well

W/2 320.00 acres

18. Distance from proposed location*
to nearest well, drilling, completed,
applied for, on this lease, ft.

See attached map

19. Proposed Depth

950'

20. BLM/BIA Bond No. on file

PIB0003277 NM 1935

21. Elevations (Show whether DF, KDB, RT, GL, etc.)

6,827 GR

22. Approximate date work will start*

as soon as permitted

23. Estimated duration

1 month

24. Attachments

The following, completed in accordance with the requirements of Onshore Oil and Gas Order No. 1, shall be attached to this form:

1. Well plat certified by a registered surveyor.

2. A Drilling Plan.

3. A Surface Use Plan (if the location is on National Forest System Lands, the
SUPO shall be filed with the appropriate Forest Service Office).

4. Bond to cover the operations unless covered by an existing bond on file (see
Item 20 above).

5. Operator certification.

6. Such other site specific information and/or plans as may be required by the
authorized officer.

25. Signature

Name (Printed/Typed)

Date

William Schwab III

03/21/06

Title

President NIKA Energy Operating/ Agent for SG Interests I, LTD

Approved by (Signature)

Name (Printed/Typed)

Date

Title

Office

FEO

Application approval does not warrant or certify that the applicant holds legal or equitable title to those rights in the subject lease which would entitle the applicant to conduct
operations thereon.

Conditions of approval, if any, are attached.

Title 18 U.S.C. Section 1001 and Title 43 U.S.C. Section 1212, make it a crime for any person knowingly and willfully to make to any department or agency of the United
States any false, fictitious or fraudulent statements or representations as to any matter within its jurisdiction.

*(Instructions on reverse)

SG Interests I, LTD. proposes to drill a well to develop the Basin Fruitland Coal formation at the above described location in accordance with the attached
drilling and surface use plans.

The surface is under jurisdiction of the Bureau of Land Management, Farmington Field Office.

This location has been archaeologically surveyed by Aztec Archaeological Consultants. Copies of their report have been submitted directly to the BLM.

A new access road approximately 359.56' in length would be required for this location.

HOLD C104 FOR NSL



District I

1625 N. French Dr., Hobbs, NM 88240

District II

1301 W. Grand Avenue, Artesia, NM 88210

District III

1000 Rio Brazos Rd., Aztec, NM 87410

District IV

1220 S. St. Francis Dr., Santa Fe, NM 87505

State of New Mexico

Energy, Minerals & Natural Resources Department

OIL CONSERVATION DIVISION

1220 South St. Francis Dr.

Santa Fe, NM 87505

Form C-102

Revised June 10, 2003

Submit to Appropriate District Office

State Lease - 4 Copies

Fee Lease - 3 Copies

☐ AMENDED REPORT

WELL LOCATION AND ACREAGE DEDICATION PLAT

API Number 30-043-21015	Pool Code 71629	Pool Name Basin Fruitland Coal
Property Code 35513	Property Name FEDERAL 21-6-29	Well Number 3
OGRID No. 20572	Operator Name SG INTERESTS I, LTD.	Elevation 6827

10 Surface Location

UL or lot no.	Section	Township	Range	Lot Idn	Feet from the	North/South line	Feet from the	East/West line	County
K	29	21N	6W		1942	South	2300	West	Sandoval

11 Bottom Hole Location If Different From Surface

UL or lot no.	Section	Township	Range	Lot Idn	Feet from the	North/South line	Feet from the	East/West line	County

Dedicated Acres 320 1/2	Joint or Infill	Consolidation Code	Order No.
----------------------------	-----------------	--------------------	-----------

NO ALLOWABLE WILL BE ASSIGNED TO THIS COMPLETION UNTIL ALL INTERESTS HAVE BEEN CONSOLIDATED OR A NON-STANDARD UNIT HAS BEEN APPROVED BY THE DIVISION

16	N 89° 09' W	79.69 ch.	17 OPERATOR CERTIFICATION I hereby certify that the information contained herein is true and complete to the best of my knowledge and belief. <i>William Schnabass</i> Signature William Schnabass Printed Name tapp@crkenergy.com AGENT Title and E-mail Address 3/22/06 Date
80.51 ch.			80.20 ch.
	SEC.		
		29	
2300'		LAT. 36.01975° N LONG. 107.49415° W	
			18 SURVEYOR CERTIFICATION I hereby certify that the well location shown on this plat was plotted from field notes of actual surveys made by me or under my supervision, and that the same is true and correct to the best of my knowledge and belief. 16 Mar 2006 Date of Survey Signature and Seal of Professional Surveyor #8466 William E. Mahnke II Certificate Number 8466
N 0° 10' E		1942'	N 0° 12' E
N 89° 18' W		79.62 ch.	

Submit 3 Copies To Appropriate District
Office
District I
1625 N. French Dr., Hobbs, NM 88240
District II
1301 W. Grand Ave., Artesia, NM 88210
District III
1000 Rio Brazos Rd., Aztec, NM 87410
District IV
1220 S. St. Francis Dr., Santa Fe, NM
87505

State of New Mexico
Energy, Minerals and Natural Resources

Form C-103
May 27, 2004

OIL CONSERVATION DIVISION
1220 South St. Francis Dr.
Santa Fe, NM 87505

WELL API NO.

5. Indicate Type of Lease
STATE ☐ FEE ☐ FED ☒

6. State Oil & Gas Lease No.
Federal NMNM 099732

7. Lease Name or Unit Agreement Name

Federal 21-6-29

8. Well Number #3

9. OGRID Number

20572

10. Pool name or Wildcat

Basin Fruitland Coal

SUNDRY NOTICES AND REPORTS ON WELLS

(DO NOT USE THIS FORM FOR PROPOSALS TO DRILL OR TO DEEPEN OR PLUG BACK TO A DIFFERENT RESERVOIR. USE "APPLICATION FOR PERMIT" (FORM C-101) FOR SUCH PROPOSALS.)

1. Type of Well: Oil Well ☐ Gas Well ☒ Other

2. Name of Operator SG Interests I, Ltd

3. Address of Operator

C/O NIKA Energy Operating, PO Box 2677, Durango, CO, 81303

4. Well Location

Unit Letter_K: 1942 feet from the South line and 2300 feet from the West line

Section 29 Township 21N Range 6W NMPM County Sandoval

11. Elevation (Show whether DR, RKB, RT, GR, etc.)
6,827'

Pit or Below-grade Tank Application ☒ or Closure ☐

Pit type Drilling Depth to Groundwater > 1,000 ft. Distance from nearest fresh water well > 1,000 ft. Distance from nearest surface water > 500 ft.

Pit Liner Thickness: 12 mil Below-Grade Tank: Volume 1000 Bbls; Construction Material Synthetic

12. Check Appropriate Box to Indicate Nature of Notice, Report or Other Data

NOTICE OF INTENTION TO:

PERFORM REMEDIAL WORK ☐ PLUG AND ABANDON ☐

TEMPORARILY ABANDON ☐ CHANGE PLANS ☐

PULL OR ALTER CASING ☐ MULTIPLE COMPL ☐

OTHER: Pit Application

☒

SUBSEQUENT REPORT OF:

REMEDIAL WORK ☐ ALTERING CASING ☐

COMMENCE DRILLING OPNS. ☐ P AND A ☐

CASING/CEMENT JOB ☐

OTHER:

☐

13. Describe proposed or completed operations. (Clearly state all pertinent details, and give pertinent dates, including estimated date of starting any proposed work). SEE RULE 1103. For Multiple Completions: Attach wellbore diagram of proposed completion or recompletion.

Drilling/Completion pit to be located approximately 15 feet from well head. Pit multi-use drilling and completion to avoid additional site disturbance and pit will be considered out of service once production tubing set. Pit to be 75 feet long by 15 feet wide by 10 feet deep. Pit to be constructed, operated and closed in accordance with NMOCD guidelines and SGI procedures



I hereby certify that the information above is true and complete to the best of my knowledge and belief. I further certify that any pit or below-grade tank has been/will be constructed or closed according to NMOCD guidelines ☒, a general permit ☐ or an (attached) alternative OCD-approved plan ☐.

SIGNATURE [Signature] TITLE Agent for SG Interests, Ltd. DATE 4/24/2006

Type or print name William Schwab III

E-mail address: tripp@nikaenergy.com

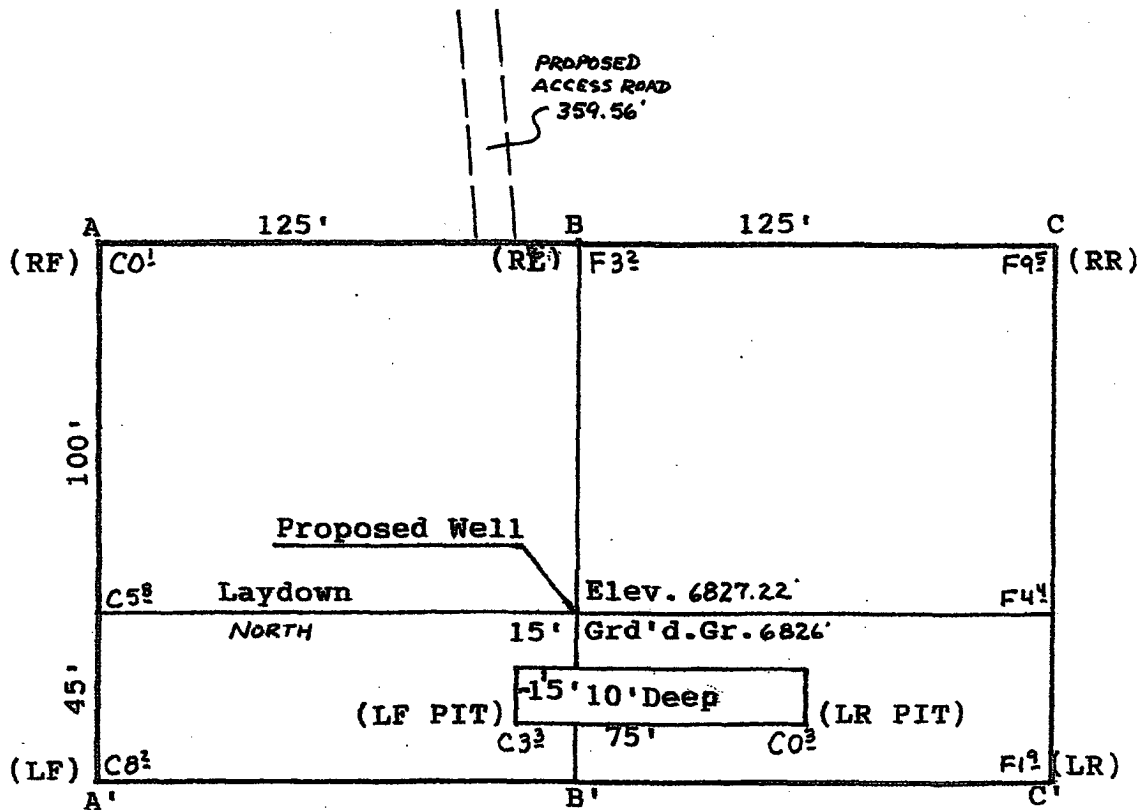
Telephone No. 970-259-2701

For State Use Only

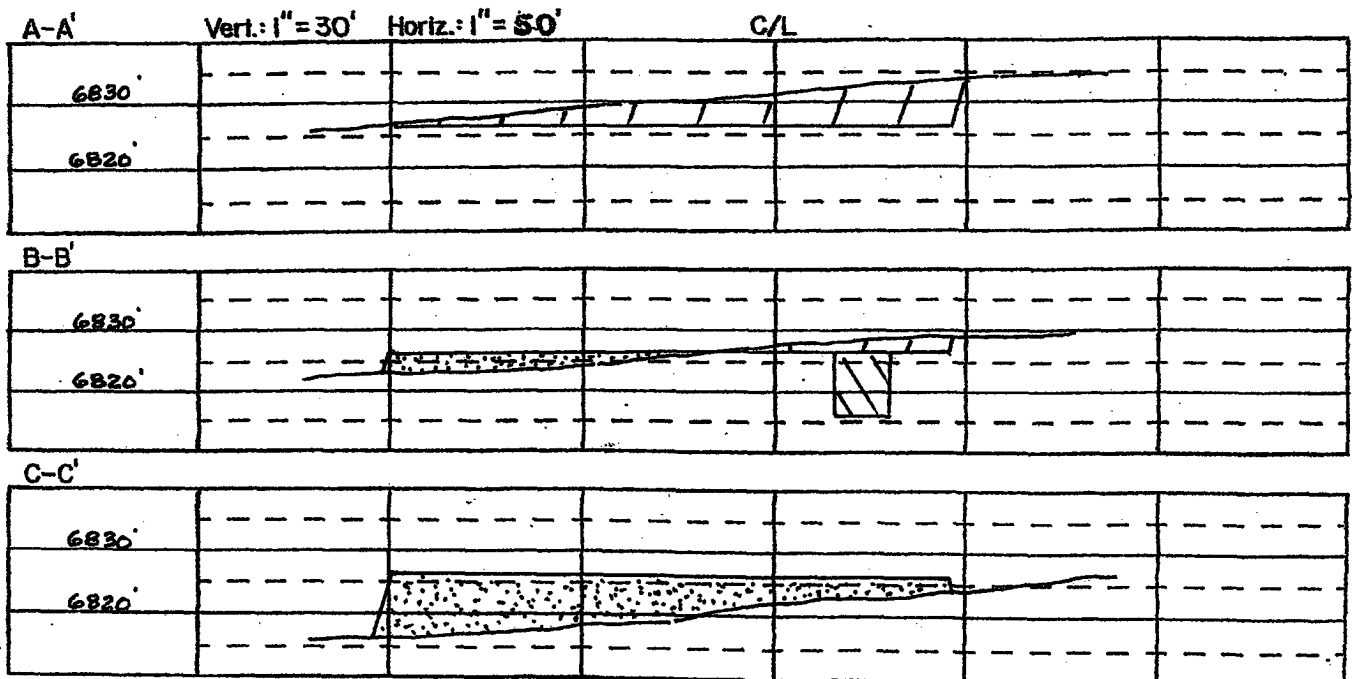
APPROVED BY: [Signature] TITLE DEPUTY OIL & GAS INSPECTOR, DIST. 3 DATE APR 26 2006

Conditions of Approval (if any):

SG INTERESTS I, LTD.
 FEDERAL 21-6-29 #3
 1942' FSL & 2300' FWL
 Sec. 29, T21N, R6W, NMPM
 Sandoval Co., NM



Scale: 1"=50'



SG Interests I, Ltd.
(Agent: Nika Energy Operating, LLC)
PO Box 2677
Durango, CO 81302
(970) 259-2701

Federal 21-6-29 #3
NESW Sec 29-21N-R6W
1942' FSL & 2300' FWL
Sandoval County, New Mexico

EIGHT POINT DRILLING PROGRAM

1. Estimated Formation Tops:

Ojo Alamo	240'
Kirtland	380'
Fruitland	590'
Pictured Cliffs	800'
Total Depth	950'

2. Estimated Depth of Anticipated Minerals:

Fruitland (Gas)	775'
-----------------	------

3. Minimum Specifications for Pressure Control Equipment:

BOP equipment and accessories will meet or exceed BLM requirements outlined in 43 CFR Part 3160.

A 2000 psig double ram hydraulic BOP will be used (see attached diagram). Accessories to the BOP will meet BLM requirements for a 2000 psig system. The accumulator system capacity will be sufficient to close all BOPE with a 50% safety factor. Fill line, kill line and line to choke manifold will be 2". BOP's will be function tested every 24 hours and will be recorded on IADC log.

Surface casing will be tested to 1500 psig for 30 minutes.

Eight Point Drilling Program - Federal 21-6-29 #3

Page 2

Accessories to BOPE will include upper and lower Kelly cocks with handles, stabbing valve to fit drill pipe on floor at all times, string float at bit, 2000 psig choke manifold with 2" adjustable and 2" positive chokes, and pressure gauge.

4. Casing and Cementing Program:

<u>Hole Size</u>	<u>Interval</u>	<u>Csg Size</u>	<u>Wt, Grd, Jt</u>
12-1/4"	0-150'	7"	20#, J-55, STC
6-1/4"	0-960'	4-1/2"	10.5#, J-55, STC

Surface Casing will be cemented with 140 sx (165 cu ft) class B w/2% CaCl and 1/4#/sx of celloflake (Yield = 1.18 cuft/sx, Weight = 15.6 #/gal). Cement volumes include excess to circulate cement to surface. A guide shoe, insert float and three (3) centralizers will be used. WOC time is 8 hours. The casing will be pressure tested to 1500 psig.

Production Casing will be cemented with 110 sx (130 cu ft) class B w/2% CaCl and 1/4#/sx celloflake (Yield = 1.18 cuft/sx, Weight = 15.6 #/gal). Cement volume includes excess to circulate cement to surface. In the event cement is not circulated a temperature survey will be run to determine the actual cement top. Cementing equipment will include a guide shoe, float collar and 7 centralizers. Class G or H cement may be used depending on availability of Class B.

5. Mud Program:

A native water based mud system (FW) will be used initially followed by a low-solids, non-dispersed gel system (LSND) as needed to condition the hole for logs. Adequate amounts of lost circulation and weighting material will be on location if needed as well as sorbitive agents to handle potential spills of fuel or lubricants.

<u>Depth</u>	<u>Type</u>	<u>Wt (ppg)</u>	<u>Vis (sec)</u>	<u>Wtr loss</u>
0-150'	FW	± 8.5	30-33	NC
150'-TD	FW & LSND	± 8.7-9.1	30-50	8-10 cc

6. Testing, Coring and Logging Program:

No DST's or cores are planned. Openhole logs if run will include GR, Induction, Density and Caliper Logs. The GR-Density logs will be run from TD to the top of the Fruitland formation. GR-Induction-Caliper logs will be run from TD to the bottom of the surface casing.

7. Anticipated Abnormal Pressures and Temperatures:

No abnormal pressures or temperatures are expected in this well. Maximum anticipated Fruitland reservoir pressure is 300 psig with a normal temperature gradient.

8. Operations:

Anticipated spud date is January 2006 or as soon as permits are received and work can be scheduled. Estimated drilling time is 4 - 5 days. The Fruitland will be completed as a cased hole completion, perforated and hydraulically fracture stimulated. Completion operations are expected to take 5 - 7 days and will commence as soon after completion of drilling operations and scheduling allow.

NIKA ENERGY OPERATING, LLC
SG INTERESTS I, LTD.

WELL NAME: Federal 21-6-29 #3

FIELD NAME: Basin Fruitland Coal

LOCATION: Sec 29-T21N-R6W
UL 5; 1942' FSL & 2196' FWL
Sandoval County, New Mexico

PROPOSED TD: 950'

DRILLING SKELETON:

<u>Interval</u>	<u>Hole Size</u>	<u>Casing Size</u>	<u>Depth</u>
Surface	12-1/4"	7"	150'
Production	6-1/4"	4-1/2"	950'

MUD PROGRAM:

<u>Interval</u>	<u>Mud Type</u>	<u>Mud Weight</u>	<u>Funnel Viscosity</u>	<u>Water Loss</u>
0 - 150'	Native	8.5 - 9.1	30 - 50	N/C
150' - TD	Native/LSND	8.5 - 9.1	30 - 50	8 - 10

CORE PROGRAM: None

ELECTRICAL LOGGING PROGRAM: On a well by well basis. SGI to make the call.

CASING AND CEMENTING PROGRAM:

<u>Interval</u>	<u>Size, Wt, Grade, Thread</u>	<u>Depth</u>	<u>Cement</u>
Surface	7", 20#, J-55, ST&C	150'	140 sx Class B w/2% CaCl + 1/4#/sx celloflake
Production	4-1/2", 10.5#, J-55, ST&C	TD	110 sx Class B. Both slurries to contain 1/4#/sx celloflake.

WELLHEAD: 3000# Independent Style

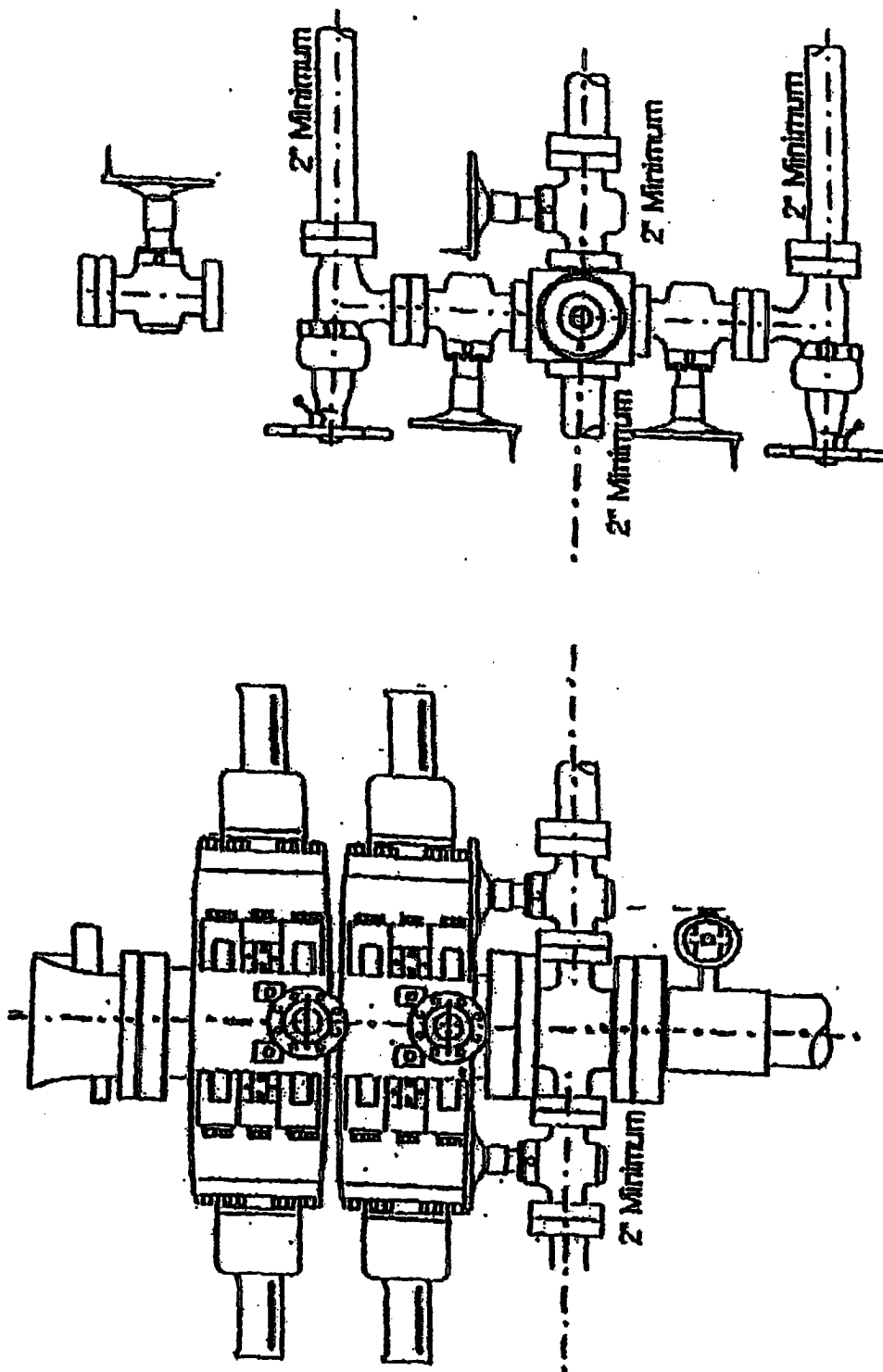
BLOWOUT PREVENTION EQUIPMENT REQUIREMENTS:

<u>Description</u>	<u>Rating</u>
Double Ram Type Preventer	2000 psi
Rotating Head	2000 psi

BOPE testing will be done by third party testers in accordance with Onshore Order No. 2. The test must be performed and recorded using a test pump, calibrated test gauges and properly calibrated strip or chart recorder. The test gauges and recorders must be of the proper range and resolution commensurate with the authorized test pressure. The test must be recorded in the driller's log and will include a low pressure test requirement of 250 psig held for 5 minutes and a high pressure test requirement held for 10 minutes. Casing pressure tests must be held for 30 minutes with no more than 10 percent pressure drop during the test.

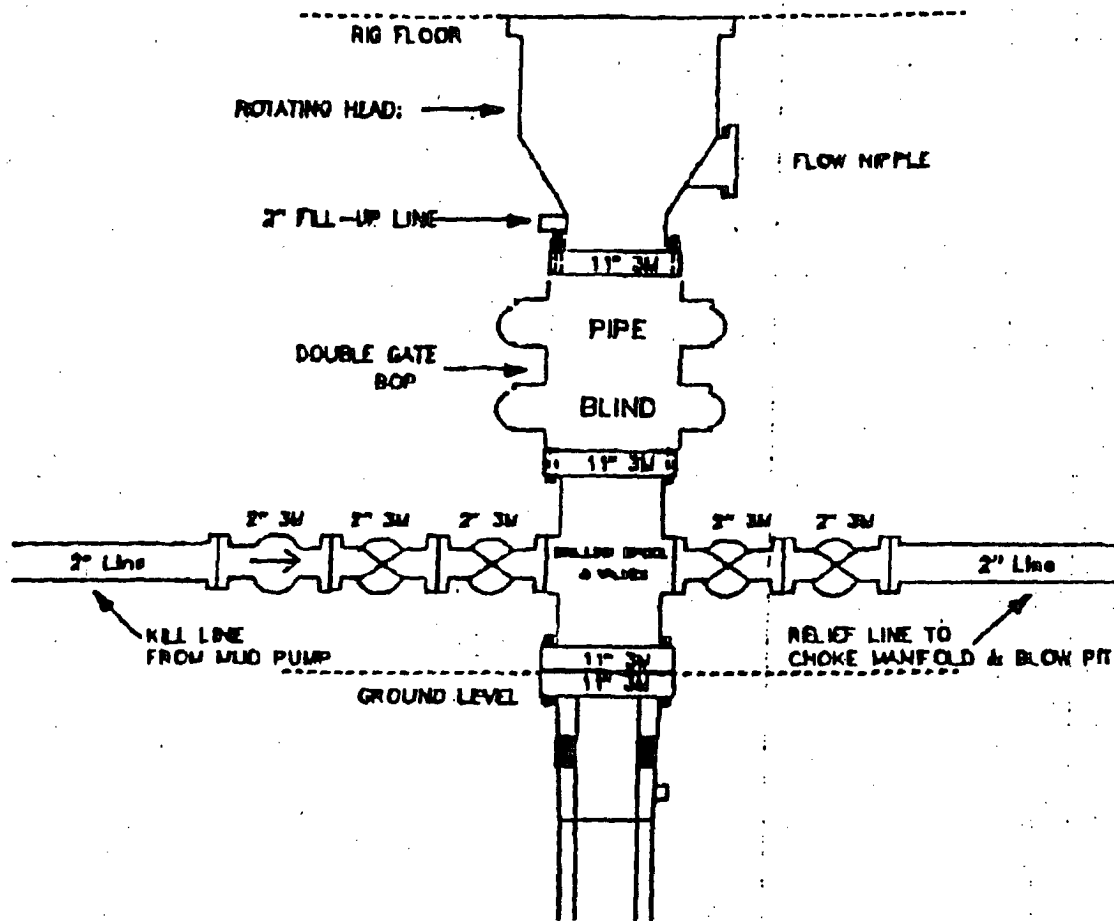
Blow Out Preventer (BOP) Exhibit #1

2-M SYSTEM



KEY FOUR CORNERS
 P. O. BOX 1067
 8861 U.S. HWY. 84
 FARMINGTON, NEW MEXICO 87408
 TELEPHONE: (806) 326-3371
 FAX: (806) 326-3370

Drilling Rig 3000 psi System



11" Bore (10" Nominal), 3000psi working pressure minimum double gate BOP to be equipped with blind and pipe rams. A rotating head on the top of the rams. All BOP equipment is 3000psi working pressure.

Note: A floor safety valve and upper kelly cock with handle will be available.

Exhibit "F-1"