

UNITED STATES
DEPARTMENT OF THE INTERIOR
BUREAU OF LAND MANAGEMENT

RECEIVED

JUL 10 2010

FORM APPROVED
OMB No. 1004-0137
Expires: July 31, 2010

SUNDRY NOTICES AND REPORTS ON WELLS
Do not use this form for proposals to drill or to re-enter an abandoned well. Use Form 3160-3 (APD) for such proposals.

SUBMIT IN TRIPLICATE - Other instructions on page 2.

1. Type of Well <input type="checkbox"/> Oil Well <input checked="" type="checkbox"/> Gas Well <input type="checkbox"/> Other		7. If Unit of CA/Agreement, Name and/or No. Allison Unit
2. Name of Operator Hilcorp Energy Company		8. Well Name and No. Allison Unit 145H
3a. Address 382 Road 3100, Aztec, NM 87410	3b. Phone No. (include area code) 505-599-3400	9. API Well No. 30-045-29363
4. Location of Well (Footage, Sec., T., R., M., or Survey Description) Surface Unit M (SW/SW) 880' FSL & 925' FWL, Sec. 07, T32N, R06W Bottomhole (HZ1) Unit B (NW/NE) 209' FNL & 1779' FEL, Sec. 13, T32N, R07W Bottomhole (HZ1/ST2) Unit H (SE/NE) 1838' FNL & 816' FEL, Sec. 13, T32N, R07W Bottomhole (HZ2) Unit A (NE/NE) 498' FNL & 1189' FEL, Sec. 18, T32N, R06W Bottomhole (HZ2/ST2) Unit G (SW/NE) 2042' FNL & 2555' FEL, Sec. 18, T32N, R06W		10. Field and Pool or Exploratory Area Basin Fruitland Coal
		11. Country or Parish, State San Juan, New Mexico

12. CHECK THE APPROPRIATE BOX(ES) TO INDICATE NATURE OF NOTICE, REPORT OR OTHER DATA

TYPE OF SUBMISSION	TYPE OF ACTION			
<input type="checkbox"/> Notice of Intent	<input type="checkbox"/> Acidize	<input type="checkbox"/> Deepen	<input type="checkbox"/> Production (Start/Resume)	<input type="checkbox"/> Water Shut-Off
<input checked="" type="checkbox"/> Subsequent Report	<input type="checkbox"/> Alter Casing	<input type="checkbox"/> Fracture Treat	<input type="checkbox"/> Reclamation	<input type="checkbox"/> Well Integrity
<input type="checkbox"/> Final Abandonment Notice	<input type="checkbox"/> Casing Repair	<input type="checkbox"/> New Construction	<input type="checkbox"/> Recomplete	<input checked="" type="checkbox"/> Other
	<input type="checkbox"/> Change Plans	<input type="checkbox"/> Plug and Abandon	<input type="checkbox"/> Temporarily Abandon	Name Change
	<input type="checkbox"/> Convert to Injection	<input type="checkbox"/> Plug Back	<input type="checkbox"/> Water Disposal	

13. Describe Proposed or Completed Operation: Clearly state all pertinent details, including estimated starting date of any proposed work and approximate duration thereof. If the proposal is to deepen directionally or recomplate horizontally, give subsurface locations and measured and true vertical depths of all pertinent markers and zones. Attach the bond under which the work will be performed or provide the Bond No. on file with BLM/BIA. Required subsequent reports must be filed within 30 days following completion of the involved operations. If the operation results in a multiple completion or recompletion in a new interval, a Form 3160-4 must be filed once Testing has been completed. Final Abandonment Notices must be filed only after all requirements, including reclamation, have been completed and the operator has determined that the site is ready for final inspection.)

Hilcorp Energy requests that the well name for the subject well be changed from Allison Unit 145 to the Allison Unit 145H to reflect the recently drilled laterals. The effective date for the name change is 7/01/2018.

NMOC
JUL 30 2018
DISTRICT III

14. I hereby certify that the foregoing is true and correct. Name (Printed/Typed) Amanda Walker		Title Operations/Regulatory Technician - Sr.	
Signature <i>Amanda Walker</i>		Date 7/20/2018	ACCEPTED FOR RECORD JUL 31 2018 FARMINGTON FIELD OFFICE BY <i>[Signature]</i> Date
THIS SPACE FOR FEDERAL OR STATE OFFICE USE			
Approved by		Title	Office
Conditions of approval, if any, are attached. Approval of this notice does not warrant or certify that the applicant holds legal or equitable title to those rights in the subject lease which would entitle the applicant to conduct operations thereon.			

Title 18 U.S.C. Section 1001 and Title 43 U.S.C. Section 1212, make it a crime for any person knowingly and willfully to make to any department or agency of the United States any false, fictitious or fraudulent statements or representations as to any matter within its jurisdiction.

NMOC

9

DISTRICT I
1625 N. French Dr., Hobbs, N.M. 88240
Phone: (575) 393-6161 Fax: (575) 393-0720

DISTRICT II
611 S. First St., Artesia, N.M. 88210
Phone: (575) 748-1283 Fax: (575) 748-9720

DISTRICT III
1000 Rio Brazos Rd., Aztec, N.M. 87410
Phone: (505) 334-6178 Fax: (505) 334-6170

DISTRICT IV
1220 S. St. Francis Dr., Santa Fe, NM 87505
Phone: (505) 476-3460 Fax: (505) 476-3462

State of New Mexico
Energy, Minerals & Natural Resources Department

OIL CONSERVATION DIVISION

1220 South St. Francis Dr.
Santa Fe, NM 87505

AS DRILLED PLAT

Form C-102
Revised August 1, 2011
Submit one copy to appropriate
District Office

☐ AMENDED REPORT

WELL LOCATION AND ACREAGE DEDICATION PLAT

¹ API Number 30-045-29363	² Pool Code 71629	³ Pool Name BASIN FRUITLAND COAL LATERAL 1
⁴ Property Code 318864	⁵ Property Name ALLISON UNIT	⁶ Well Number 145 H
⁷ OGRID No. 372171	⁸ Operator Name HILCORP ENERGY COMPANY	⁹ Elevation 6519'

¹⁰ Surface Location

UL or lot no. M	Section 7	Township 32-N	Range 6-W	Lot Idn 7	Feet from the 880	North/South line SOUTH	Feet from the 925	East/West line WEST	County SAN JUAN
--------------------	--------------	------------------	--------------	--------------	----------------------	---------------------------	----------------------	------------------------	--------------------

¹¹ Bottom Hole Location If Different From Surface

UL or lot no. B	Section 13	Township 32-N	Range 7-W	Lot Idn	Feet from the 209	North/South line NORTH	Feet from the 1779	East/West line EAST	County SAN JUAN
--------------------	---------------	------------------	--------------	---------	----------------------	---------------------------	-----------------------	------------------------	--------------------

¹² Dedicated Acres PROJECT AREA 957.04 ACRES	¹³ Joint or Infill	¹⁴ Consolidation Code	¹⁵ Order No. R-8768-C
--	-------------------------------	----------------------------------	-------------------------------------

NO ALLOWABLE WILL BE ASSIGNED TO THIS COMPLETION UNTIL ALL INTERESTS HAVE BEEN CONSOLIDATED
OR A NON-STANDARD UNIT HAS BEEN APPROVED BY THE DIVISION

SURFACE
LATITUDE: 36°59.3992' N
LONGITUDE: 107°30.3216' W
NAD27

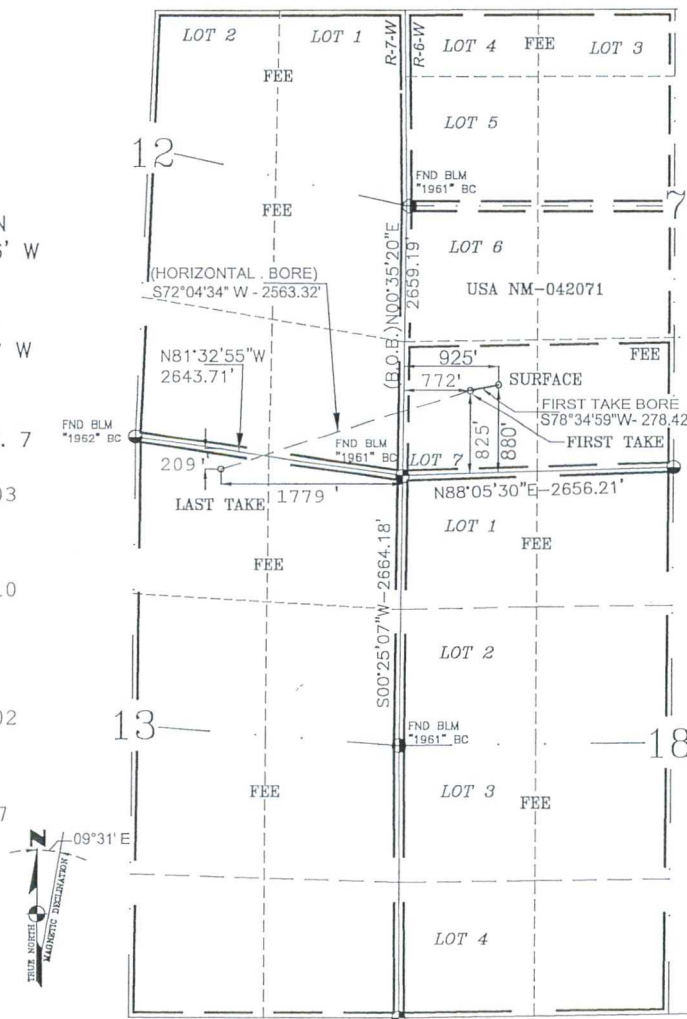
LATITUDE: 36.989992° N
LONGITUDE: 107.505966° W
NAD83

FIRST TAKE
825' FSL 722' FWL SEC. 7
LATITUDE: 36.989840
LONGITUDE: -107.506603
NAD27

LATITUDE: 36.989845
LONGITUDE: -107.507210
NAD83

LAST TAKE
LATITUDE: 36.9876392
LONGITUDE: -107.5146502
NAD27

LATITUDE: 36.987644
LONGITUDE: -107.515257
NAD83



¹⁷ OPERATOR CERTIFICATION

I hereby certify that the information contained herein is true and complete to the best of my knowledge and belief, and that this organization either owns a working interest or unleased mineral interest in the land including the proposed bottom hole location or has a right to drill this well at this location pursuant to a contract with an owner of such a mineral or a working interest, or to a voluntary pooling agreement or a compulsory pooling order heretofore entered by the division.

Amanda Walker 2018
Signature Date
Amanda Walker
Printed Name
mwalker@hilcorp.com
E-mail Address

¹⁸ SURVEYOR CERTIFICATION

I hereby certify that the well location shown on this plat was plotted from field notes of actual surveys made by me or under my supervision, and that the same is true and correct to the best of my belief.

Original C-102 Attached

GLEN W. RUSSELL
Certificate Number 15703

DISTRICT I
1625 N. French Dr., Hobbs, N.M. 88240
Phone: (575) 393-6161 Fax: (575) 393-0720

DISTRICT II
811 S. First St., Artesia, N.M. 88210
Phone: (575) 748-1283 Fax: (575) 748-9720

DISTRICT III
1000 Rio Brazos Rd., Aztec, N.M. 87410
Phone: (505) 334-6178 Fax: (505) 334-6170

DISTRICT IV
1220 S. St. Francis Dr., Santa Fe, NM 87505
Phone: (505) 476-3460 Fax: (505) 476-3462

State of New Mexico
Energy, Minerals & Natural Resources Department

OIL CONSERVATION DIVISION

1220 South St. Francis Dr.
Santa Fe, NM 87505

AS DRILLED PLAT

Form C-102
Revised August 1, 2011
Submit one copy to appropriate
District Office

☐ AMENDED REPORT

WELL LOCATION AND ACREAGE DEDICATION PLAT

¹ API Number 30-045-29363	² Pool Code 71629	³ Pool Name BASIN FRUITLAND COAL LATERAL 1 SIDETRACK 2
⁴ Property Code 318864	⁵ Property Name ALLISON UNIT	⁶ Well Number 145 H
⁷ OGRID No. 372171	⁸ Operator Name HILCORP ENERGY COMPANY	⁹ Elevation 6519'

¹⁰ Surface Location

UL or lot no. M	Section 7	Township 32-N	Range 6-W	Lot Idn 7	Feet from the 880	North/South line SOUTH	Feet from the 925	East/West line WEST	County SAN JUAN
--------------------	--------------	------------------	--------------	--------------	----------------------	---------------------------	----------------------	------------------------	--------------------

¹¹ Bottom Hole Location If Different From Surface

UL or lot no. H	Section 13	Township 32-N	Range 7-W	Lot Idn	Feet from the 1838'	North/South line NORTH	Feet from the 816'	East/West line EAST	County SAN JUAN
--------------------	---------------	------------------	--------------	---------	------------------------	---------------------------	-----------------------	------------------------	--------------------

¹² Dedicated Acres PROJECT AREA 957.04 ACRES	¹³ Joint or Infill	¹⁴ Consolidation Code	¹⁵ Order No. R-8768-C
--	-------------------------------	----------------------------------	-------------------------------------

NO ALLOWABLE WILL BE ASSIGNED TO THIS COMPLETION UNTIL ALL INTERESTS HAVE BEEN CONSOLIDATED
OR A NON-STANDARD UNIT HAS BEEN APPROVED BY THE DIVISION

SURFACE
LATITUDE: 36°59.3992' N
LONGITUDE: 107°30.3216' W
NAD27

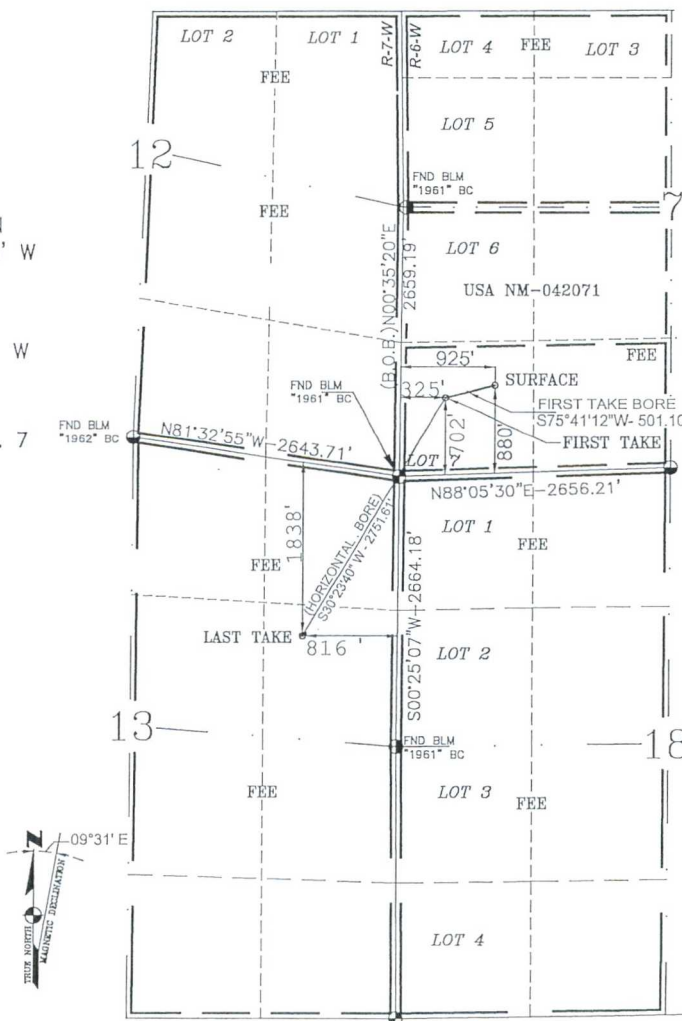
LATITUDE: 36.989992° N
LONGITUDE: 107.505966° W
NAD83

FIRST TAKE
702' FSL 325' FWL SEC. 7
LATITUDE: 36.989837
LONGITUDE: -107.506620
NAD27

LATITUDE: 36.989842
LONGITUDE: -107.504312
NAD83

LAST TAKE
LATITUDE: 36.982825
LONGITUDE: 107.511394
NAD27

LATITUDE: 36.982830
LONGITUDE: -107.512001
NAD83



¹⁷ OPERATOR CERTIFICATION

I hereby certify that the information contained herein is true and complete to the best of my knowledge and belief, and that this organization either owns a working interest or unleased mineral interest in the land including the proposed bottom hole location or has a right to drill this well at this location pursuant to a contract with an owner of such a mineral or a working interest, or to a voluntary pooling agreement or a compulsory pooling order heretofore entered by the division.

Amanda Walker
Signature

7/20/2018
Date

Amanda Walker
Printed Name
mwalker@hilcorp.com
E-mail Address

¹⁸ SURVEYOR CERTIFICATION

I hereby certify that the well location shown on this plat was plotted from field notes of actual surveys made by me or under my supervision, and that the same is true and correct to the best of my belief.

Original C-102 Attached

Certificate Number 15703

DISTRICT I
1625 N. French Dr., Hobbs, N.M. 88240
Phone: (575) 393-6161 Fax: (575) 393-0720

DISTRICT II
811 S. First St., Artesia, N.M. 88210
Phone: (575) 748-1283 Fax: (575) 748-9720

DISTRICT III
1000 Rio Brazos Rd., Aztec, N.M. 87410
Phone: (505) 834-6178 Fax: (505) 334-8170

DISTRICT IV
1220 S. St. Francis Dr., Santa Fe, NM 87505
Phone: (505) 476-3480 Fax: (505) 476-3462

State of New Mexico
Energy, Minerals & Natural Resources Department

OIL CONSERVATION DIVISION

1220 South St. Francis Dr.
Santa Fe, NM 87505

AS DRILLED PLAT

Form C-102
Revised August 1, 2011
Submit one copy to appropriate
District Office

☐ AMENDED REPORT

WELL LOCATION AND ACREAGE DEDICATION PLAT

¹ API Number 30-045-29363	² Pool Code 71629	³ Pool Name BASIN FRUITLAND COAL LATERAL 2
⁴ Property Code 318864	⁵ Property Name ALLISON UNIT	⁶ Well Number 145 H
⁷ OGRID No. 372171	⁸ Operator Name HILCORP ENERGY COMPANY	⁹ Elevation 6519'

¹⁰ Surface Location

UL or lot no. M	Section 7	Township 32-N	Range 6-W	Lot Idn 7	Feet from the 880	North/South line SOUTH	Feet from the 925	East/West line WEST	County SAN JUAN
--------------------	--------------	------------------	--------------	--------------	----------------------	---------------------------	----------------------	------------------------	--------------------

¹¹ Bottom Hole Location If Different From Surface

UL or lot no. A	Section 18	Township 32-N	Range 6-W	Lot Idn	Feet from the 498'	North/South line NORTH	Feet from the 1189'	East/West line EAST	County SAN JUAN
--------------------	---------------	------------------	--------------	---------	-----------------------	---------------------------	------------------------	------------------------	--------------------

¹² Dedicated Acres PROJECT AREA: 957.04 ACRES	¹³ Joint or Infill	¹⁴ Consolidation Code	¹⁵ Order No. R-8768-C
---	-------------------------------	----------------------------------	-------------------------------------

NO ALLOWABLE WILL BE ASSIGNED TO THIS COMPLETION UNTIL ALL INTERESTS HAVE BEEN CONSOLIDATED
OR A NON-STANDARD UNIT HAS BEEN APPROVED BY THE DIVISION

SURFACE

LATITUDE: 36°59.3992' N
LONGITUDE: 107°30.3216' W
NAD27

LATITUDE: 36.989992° N
LONGITUDE: 107.505966° W
NAD83

FIRST TAKE

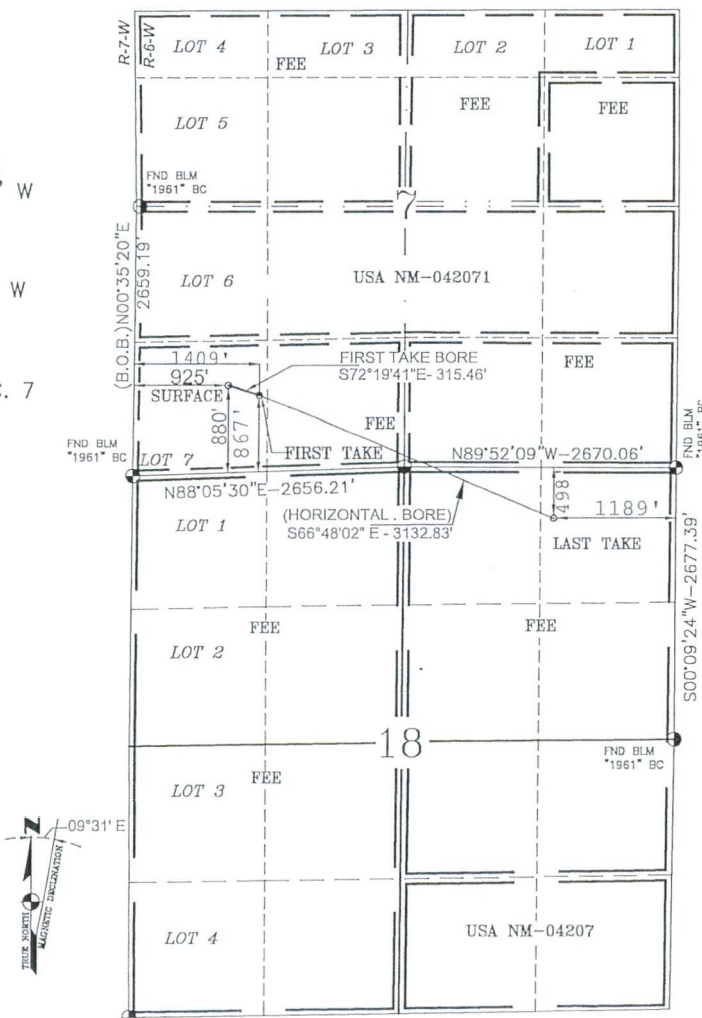
867' FSL 1409' FWL SEC. 7
LATITUDE: 36.989466
LONGITUDE: -107.503706
NAD27

LATITUDE: 36.989471
LONGITUDE: -107.504312
NAD83

LAST TAKE

LATITUDE: 36.986348
LONGITUDE: -107.494411
NAD27

LATITUDE: 36.986353
LONGITUDE: -107.495016
NAD83



¹⁷ OPERATOR CERTIFICATION

I hereby certify that the information contained herein is true and complete to the best of my knowledge and belief, and that this organization either owns a working interest or unleased mineral interest in the land including the proposed bottom hole location or has a right to drill this well at this location pursuant to a contract with an owner of such a mineral or a working interest, or to a voluntary pooling agreement or a compulsory pooling order heretofore entered by the division.

Amanda Walker
Signature

7/20/2018
Date

Amanda Walker
Printed Name

mwalker@hilcorp.com
E-mail Address

¹⁸ SURVEYOR CERTIFICATION

I hereby certify that the well location shown on this plat was plotted from field notes of actual surveys made by me or under my supervision, and that the same is true and correct to the best of my belief.

Original C-102 Attached

Certificate Number

15703

DISTRICT I
1625 N. French Dr., Hobbs, N.M. 88240
Phone: (575) 393-6161 Fax: (575) 393-0720

DISTRICT II
811 S. First St., Artesia, N.M. 88210
Phone: (575) 748-1283 Fax: (575) 748-9720

DISTRICT III
1000 Rio Brazos Rd., Aztec, N.M. 87410
Phone: (505) 334-8178 Fax: (505) 334-8170

DISTRICT IV
1220 S. St. Francis Dr., Santa Fe, NM 87505
Phone: (505) 476-3460 Fax: (505) 476-3462

State of New Mexico
Energy, Minerals & Natural Resources Department

OIL CONSERVATION DIVISION

1220 South St. Francis Dr.
Santa Fe, NM 87505

AS DRILLED PLAT

Form C-102
Revised August 1, 2011
Submit one copy to appropriate
District Office

☐ AMENDED REPORT

WELL LOCATION AND ACREAGE DEDICATION PLAT

¹ API Number 30-045-29363	² Pool Code 71629	³ Pool Name BASIN FRUITLAND COAL LATERAL 2 SIDETRACK 2
⁴ Property Code 318864	⁵ Property Name ALLISON UNIT	⁶ Well Number 145 H
⁷ OGRID No. 372171	⁸ Operator Name HILCORP ENERGY COMPANY	⁹ Elevation 6519'

¹⁰ Surface Location

UL or lot no.	Section	Township	Range	Lot Idn	Feet from the	North/South line	Feet from the	East/West line	County
M	7	32-N	6-W	7	880	SOUTH	925	WEST	SAN JUAN

¹¹ Bottom Hole Location If Different From Surface

UL or lot no.	Section	Township	Range	Lot Idn	Feet from the	North/South line	Feet from the	East/West line	County
G	18	32-N	6-W		2042'	NORTH	2555'	EAST	SAN JUAN

¹² Dedicated Acres PROJECT AREA 957.04 ACRES	¹³ Joint or Infill	¹⁴ Consolidation Code	¹⁵ Order No. R-8768-C
--	-------------------------------	----------------------------------	-------------------------------------

NO ALLOWABLE WILL BE ASSIGNED TO THIS COMPLETION UNTIL ALL INTERESTS HAVE BEEN CONSOLIDATED
OR A NON-STANDARD UNIT HAS BEEN APPROVED BY THE DIVISION

SURFACE

LATITUDE: 36°59.3992' N
LONGITUDE: 107°30.3216' W
NAD27

LATITUDE: 36.989992° N
LONGITUDE: 107.505966° W
NAD83

FIRST TAKE

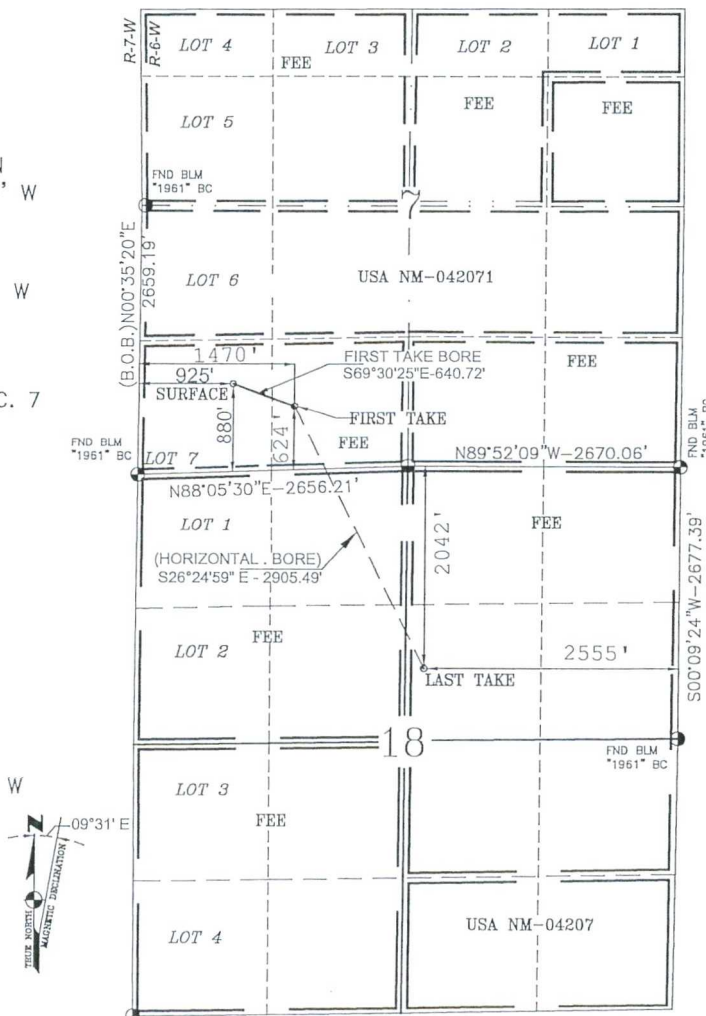
624' FSL 1470' FWL SEC. 7
LATITUDE: 36.989402
LONGITUDE: -107.503506
NAD27

LATITUDE: 36.989407
LONGITUDE: -107.504112
NAD83

LAST TAKE

LATITUDE: 36.982123
LONGITUDE: -107.499103
NAD27

LATITUDE: 36.982128
LONGITUDE: -107.499709
NAD83



¹⁷ OPERATOR CERTIFICATION

I hereby certify that the information contained herein is true and complete to the best of my knowledge and belief, and that this organization either owns a working interest or unleased mineral interest in the land including the proposed bottom hole location or has a right to drill this well at this location pursuant to a contract with an owner of such a mineral or a working interest, or to a voluntary pooling agreement or a compulsory pooling order heretofore entered by the division.

Amanda Walker
Signature

7/20/2018
Date

Amanda Walker
Printed Name

mwalker@hilcorp.com
E-mail Address

¹⁸ SURVEYOR CERTIFICATION

I hereby certify that the well location shown on this plat was plotted from field notes of actual surveys made by me or under my supervision, and that the same is true and correct to the best of my belief.

Original C-102 Attached

Certificate Number

15703

DISTRICT I
1625 N. French Dr., Hobbs, N.M. 88240
Phone: (575) 393-6161 Fax: (575) 393-0720

DISTRICT II
811 S. First St., Artesia, N.M. 88210
Phone: (575) 748-1283 Fax: (505) 748-9720

DISTRICT III
1000 Rio Brazos Rd., Aztec, N.M. 87410
Phone: (505) 334-6178 Fax: (505) 334-6170

DISTRICT IV
1220 S. St. Francis Dr., Santa Fe, NM 87505
Phone: (505) 476-3460 Fax: (505) 476-3462

State of New Mexico
Energy, Minerals & Natural Resources Department

OIL CONSERVATION DIVISION

1220 South St. Francis Dr.
Santa Fe, NM 87505

Form C-102
Revised August 1, 2011
Submit one copy to appropriate
District Office

☐ AMENDED REPORT

WELL LOCATION AND ACREAGE DEDICATION PLAT

¹ API Number 30-045-29363	² Pool Code 71629	³ Pool Name BASIN FRUITLAND COAL LATERAL 1
⁴ Property Code 318864	⁵ Property Name ALLISON UNIT	⁶ Well Number 145 H
⁷ OGRID No. 372171	⁸ Operator Name HILCORP ENERGY COMPANY	⁹ Elevation 6519'

¹⁰ Surface Location

UL or lot no.	Section	Township	Range	Lot Idn	Feet from the	North/South line	Feet from the	East/West line	County
M	7	32-N	6-W	7	880	SOUTH	925	WEST	SAN JUAN

¹¹ Bottom Hole Location If Different From Surface

UL or lot no.	Section	Township	Range	Lot Idn	Feet from the	North/South line	Feet from the	East/West line	County
B	13	32-N	7-W		197	NORTH	1777	EAST	SAN JUAN

¹² Dedicated Acres PROJECT AREA 1,707.11 ACRES SEE DETAIL BELOW	¹³ Joint or Infill	¹⁴ Consolidation Code	¹⁵ Order No. R-8768-C
--	-------------------------------	----------------------------------	-------------------------------------

NO ALLOWABLE WILL BE ASSIGNED TO THIS COMPLETION UNTIL ALL INTERESTS HAVE BEEN CONSOLIDATED
OR A NON-STANDARD UNIT HAS BEEN APPROVED BY THE DIVISION

¹⁶ DETAIL:

SEC. 12 T32N-R7W - LOTS 1-2, SE/4 = 199.55 ACRES
SEC. 13 T32N-R7W - E/2 = 320.00 ACRES
SEC. 7 T32N-R6W - LOTS 1-7, E/2 SW/4, SE/4 NW/4, S/2 NE/4, SE/4 = 549.74 ACRES
SEC. 18 T32N-R6W - LOTS 1-4, E/2 W/2, E/2 = 637.82 ACRES

SURFACE

LATITUDE: 36°59.3992' N
LONGITUDE: 107°30.3216' W
NAD27

LATITUDE: 36.989992° N
LONGITUDE: 107.505966° W
NAD83

FIRST TAKE

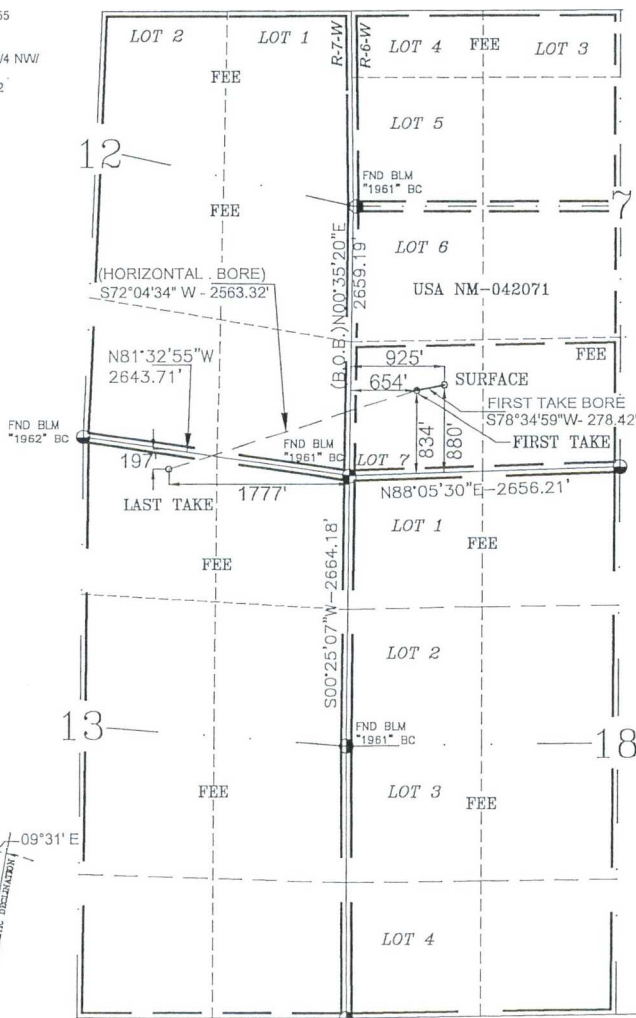
834' FSL 654' FWL SEC. 7
LATITUDE: 36°59.3901' N
LONGITUDE: 107°30.3776' W
NAD27

LATITUDE: 36.989841° N
LONGITUDE: 107.506900° W
NAD83

LAST TAKE

LATITUDE: 36°59.2603' N
LONGITUDE: 107°30.8785' W
NAD27

LATITUDE: 36.987676° N
LONGITUDE: 107.515248° W
NAD83



¹⁷ OPERATOR CERTIFICATION

I hereby certify that the information contained herein is true and complete to the best of my knowledge and belief, and that this organization either owns a working interest or unleased mineral interest in the land including the proposed bottom hole location or has a right to drill this well at this location pursuant to a contract with an owner of such a mineral or a working interest, or to a voluntary pooling agreement or a compulsory pooling order heretofore entered by the division.

Signature _____ Date _____
Amanda Ray
Printed Name
mray@hilcorp.com
E-mail Address

¹⁸ SURVEYOR CERTIFICATION

I hereby certify that the well location shown on this plat was plotted from field notes of actual surveys made by me or under my supervision, and that the same is true and correct to the best of my belief.

MARCH 9, 2018
Date of Survey

Signature and Seal of Professional Surveyor



GLEN W. RUSSELL
Certificate Number

15703

DISTRICT I
1625 N. French Dr., Hobbs, N.M. 88240
Phone: (575) 393-6161 Fax: (575) 393-0720

DISTRICT II
811 S. First St., Artesia, N.M. 88210
Phone: (575) 748-1283 Fax: (575) 748-9720

DISTRICT III
1000 Rio Brazos Rd., Aztec, N.M. 87410
Phone: (505) 334-6178 Fax: (505) 334-6170

DISTRICT IV
1220 S. St. Francis Dr., Santa Fe, NM 87505
Phone: (505) 476-3460 Fax: (505) 476-3462

State of New Mexico
Energy, Minerals & Natural Resources Department

OIL CONSERVATION DIVISION

1220 South St. Francis Dr.
Santa Fe, NM 87505

Form C-102
Revised August 1, 2011
Submit one copy to appropriate
District Office

☐ AMENDED REPORT

WELL LOCATION AND ACREAGE DEDICATION PLAT

¹ API Number 30-045-29363	² Pool Code 71629	³ Pool Name BASIN FRUITLAND COAL LATERAL 1 SIDETRACK 1
⁴ Property Code 318864	⁵ Property Name ALLISON UNIT	⁶ Well Number 145 H
⁷ OGRID No. 372171	⁸ Operator Name HILCORP ENERGY COMPANY	⁹ Elevation 6519'

¹⁰ Surface Location

UL or lot no.	Section	Township	Range	Lot Idn	Feet from the	North/South line	Feet from the	East/West line	County
M	7	32-N	6-W	7	880	SOUTH	925	WEST	SAN JUAN

¹¹ Bottom Hole Location If Different From Surface

UL or lot no.	Section	Township	Range	Lot Idn	Feet from the	North/South line	Feet from the	East/West line	County
H	13	32-N	7-W		1727	NORTH	931	EAST	SAN JUAN

¹² Dedicated Acres PROJECT AREA 1,707.11 ACRES SEE DETAIL BELOW	¹³ Joint or Infill	¹⁴ Consolidation Code	¹⁵ Order No. R-8768-C
--	-------------------------------	----------------------------------	-------------------------------------

NO ALLOWABLE WILL BE ASSIGNED TO THIS COMPLETION UNTIL ALL INTERESTS HAVE BEEN CONSOLIDATED
OR A NON-STANDARD UNIT HAS BEEN APPROVED BY THE DIVISION

¹⁶ DETAIL:

SEC. 12 T32N-R7W - LOTS 1-2, SE/4 = 199.55 ACRES
SEC. 13 T32N-R7W - E/2 = 320.00 ACRES
SEC. 7 T32N-R6W - LOTS 1-7, E/2 SW/4, SE/4 NW/4, S/2 NE/4, SE/4 = 549.74 ACRES
SEC. 18 T32N-R6W - LOTS 1-4, E/2 W/2, E/2 = 637.82 ACRES

SURFACE

LATITUDE: 36°59.3992' N
LONGITUDE: 107°30.3216' W
NAD27

LATITUDE: 36.989992° N
LONGITUDE: 107.505966° W
NAD83

FIRST TAKE

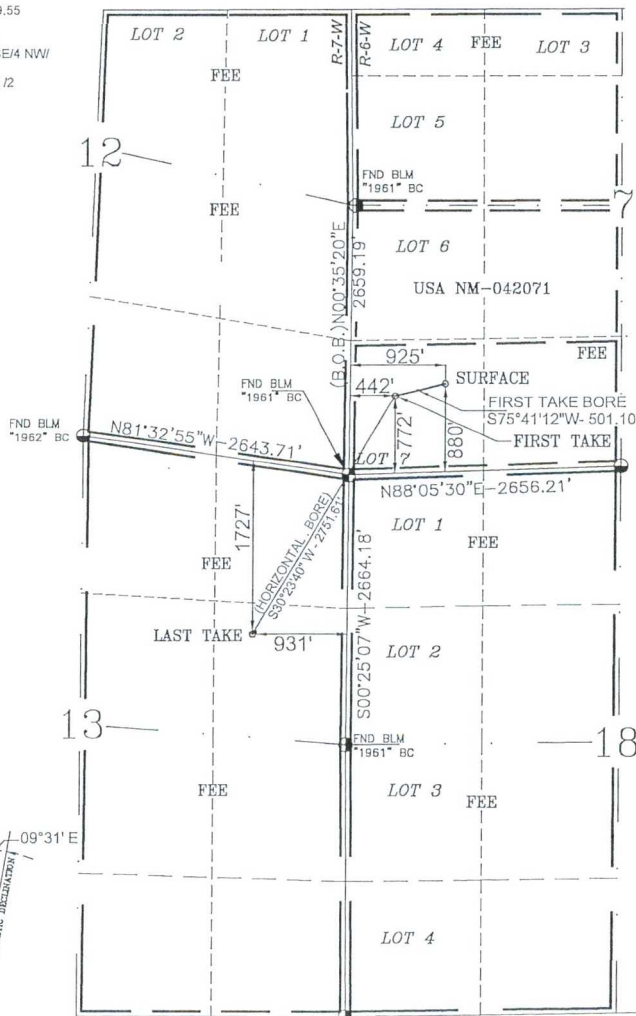
772' FSL 442' FWL SEC. 7
LATITUDE: 36°59.3788' N
LONGITUDE: 107°30.4213' W
NAD27

LATITUDE: 36.989652° N
LONGITUDE: 107.507628° W
NAD83

LAST TAKE

LATITUDE: 36°58.9879' N
LONGITUDE: 107°30.7073' W
NAD27

LATITUDE: 36.983136° N
LONGITUDE: 107.512395° W
NAD83



¹⁷ OPERATOR CERTIFICATION

I hereby certify that the information contained herein is true and complete to the best of my knowledge and belief, and that this organization either owns a working interest or unleased mineral interest in the land including the proposed bottom hole location or has a right to drill this well at this location pursuant to a contract with an owner of such a mineral or a working interest, or to a voluntary pooling agreement or a compulsory pooling order heretofore entered by the division.

Signature _____ Date _____
Amanda Ray
Printed Name
mray@hilcorp.com
E-mail Address

¹⁸ SURVEYOR CERTIFICATION

I hereby certify that the well location shown on this plat was plotted from field notes of actual surveys made by me or under my supervision, and that the same is true and correct to the best of my belief.

MARCH 12, 2018
Date of Survey

Signature and Seal of Professional Surveyor



GLEN W. RUSSELL

Certificate Number

15703

DISTRICT I
1625 N. French Dr., Hobbs, N.M. 88240
Phone: (575) 393-6161 Fax: (575) 393-0720

DISTRICT II
811 S. First St., Artesia, N.M. 88210
Phone: (575) 748-1283 Fax: (575) 748-9720

DISTRICT III
1000 Rio Brazos Rd., Aztec, N.M. 87410
Phone: (505) 834-6178 Fax: (505) 834-6170

DISTRICT IV
1220 S. St. Francis Dr., Santa Fe, NM 87505
Phone: (505) 476-3480 Fax: (505) 476-3482

State of New Mexico
Energy, Minerals & Natural Resources Department

OIL CONSERVATION DIVISION

1220 South St. Francis Dr.
Santa Fe, NM 87505

Form C-102
Revised August 1, 2011
Submit one copy to appropriate
District Office

☐ AMENDED REPORT

WELL LOCATION AND ACREAGE DEDICATION PLAT

¹ API Number 30-045-29363	² Pool Code 71629	³ Pool Name BASIN FRUITLAND COAL LATERAL 2
⁴ Property Code 318864	⁵ Property Name ALLISON UNIT	⁶ Well Number 145 H
⁷ OGRID No. 372171	⁸ Operator Name HILCORP ENERGY COMPANY	⁹ Elevation 6519'

¹⁰ Surface Location

UL or lot no. M	Section 7	Township 32-N	Range 6-W	Lot Idn 7	Feet from the 880	North/South line SOUTH	Feet from the 925	East/West line WEST	County SAN JUAN
--------------------	--------------	------------------	--------------	--------------	----------------------	---------------------------	----------------------	------------------------	--------------------

¹¹ Bottom Hole Location If Different From Surface

UL or lot no. A	Section 18	Township 32-N	Range 6-W	Lot Idn	Feet from the 504	North/South line NORTH	Feet from the 1208	East/West line EAST	County SAN JUAN
--------------------	---------------	------------------	--------------	---------	----------------------	---------------------------	-----------------------	------------------------	--------------------

¹² Dedicated Acres PROJECT AREA: 1,707.11 ACRES SEE DETAIL BELOW	¹³ Joint or Infill	¹⁴ Consolidation Code	¹⁵ Order No. R-8768-C
---	-------------------------------	----------------------------------	-------------------------------------

NO ALLOWABLE WILL BE ASSIGNED TO THIS COMPLETION UNTIL ALL INTERESTS HAVE BEEN CONSOLIDATED
OR A NON-STANDARD UNIT HAS BEEN APPROVED BY THE DIVISION

¹⁶ DETAIL:

SEC. 12 T32N-R7W - LOTS 1-2, SE/4 = 199.55 ACRES
SEC. 13 T32N-R7W - E/2 = 320.00 ACRES
SEC. 7 T32N-R6W - LOTS 1-7, E/2 SW/4, SE/4 NW/4, S/2 NE/4, SE/4 = 549.74 ACRES
SEC. 18 T32N-R6W - LOTS 1-4, E/2 W/2, E/2 = 637.82 ACRES

SURFACE

LATITUDE: 36°59.3992' N
LONGITUDE: 107°30.3216' W
NAD27

LATITUDE: 36.989992° N
LONGITUDE: 107.505966° W
NAD83

FIRST TAKE

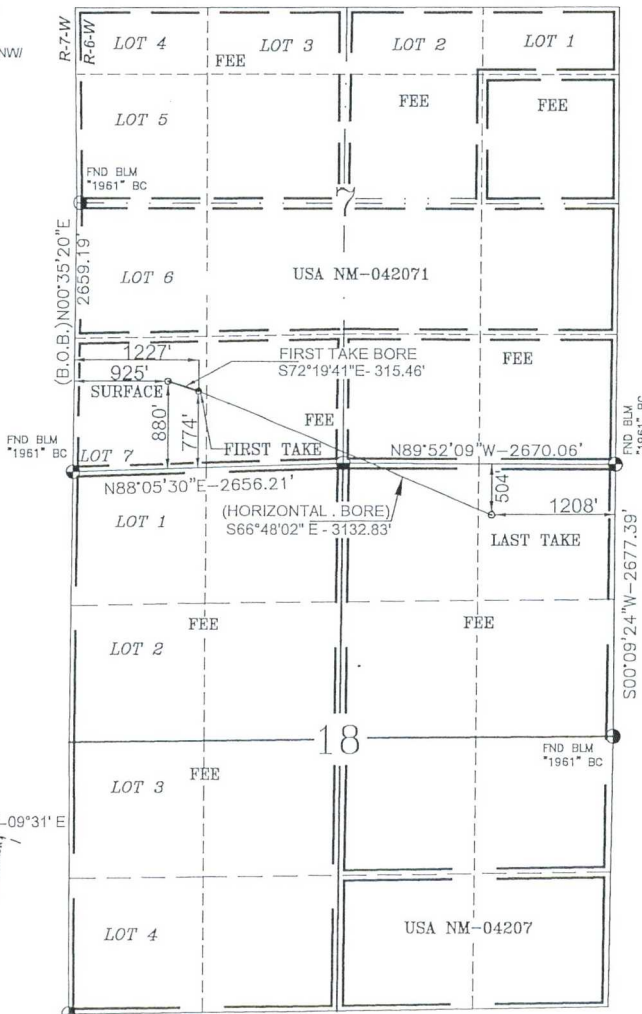
774' FSL 1227' FWL SEC. 7
LATITUDE: 36°59.3834' N
LONGITUDE: 107°30.2599' W
NAD27

LATITUDE: 36.989729° N
LONGITUDE: 107.504937° W
NAD83

LAST TAKE

LATITUDE: 36°59.1800' N
LONGITUDE: 107°29.6686' W
NAD27

LATITUDE: 36.986338° N
LONGITUDE: 107.495083° W
NAD83



¹⁷ OPERATOR CERTIFICATION

I hereby certify that the information contained herein is true and complete to the best of my knowledge and belief, and that this organization either owns a working interest or unleased mineral interest in the land including the proposed bottom hole location or has a right to drill this well at this location pursuant to a contract with an owner of such a mineral or a working interest, or to a voluntary pooling agreement or a compulsory pooling order heretofore entered by the division.

Signature _____ Date _____
Amanda Ray
Printed Name
mray@hilcorp.com
E-mail Address

¹⁸ SURVEYOR CERTIFICATION

I hereby certify that the well location shown on this plat was plotted from field notes of actual surveys made by me or under my supervision, and that the same is true and correct to the best of my belief.

MARCH 10, 2018
Date of Survey

Signature and Seal of Professional Surveyor



GLEN W. RUSSELL
Certificate Number 15703

DISTRICT I
1825 N. French Dr., Hobbs, N.M. 88240
Phone: (575) 393-6161 Fax: (575) 393-0720

DISTRICT II
811 S. First St., Artesia, N.M. 88210
Phone: (575) 748-1283 Fax: (575) 748-9720

DISTRICT III
1000 Rio Brazos Rd., Aztec, N.M. 87410
Phone: (505) 334-6178 Fax: (505) 334-6170

DISTRICT IV
1220 S. St. Francis Dr., Santa Fe, NM 87505
Phone: (505) 476-3460 Fax: (505) 476-3462

State of New Mexico
Energy, Minerals & Natural Resources Department

OIL CONSERVATION DIVISION

1220 South St. Francis Dr.
Santa Fe, NM 87505

Form C-102
Revised August 1, 2011
Submit one copy to appropriate
District Office

☐ AMENDED REPORT

WELL LOCATION AND ACREAGE DEDICATION PLAT

¹ API Number 30-045-29363	² Pool Code 71629	³ Pool Name BASIN FRUITLAND COAL LATERAL 2 SIDETRACK 1
⁴ Property Code 318864	⁵ Property Name ALLISON UNIT	⁶ Well Number 145 H
⁷ OGRID No. 372171	⁸ Operator Name HILCORP ENERGY COMPANY	⁹ Elevation 6519'

¹⁰ Surface Location

UL or lot no. M	Section 7	Township 32-N	Range 6-W	Lot Idn 7	Feet from the 880	North/South line SOUTH	Feet from the 925	East/West line WEST	County SAN JUAN
--------------------	--------------	------------------	--------------	--------------	----------------------	---------------------------	----------------------	------------------------	--------------------

¹¹ Bottom Hole Location If Different From Surface

UL or lot no. G	Section 18	Township 32-N	Range 6-W	Lot Idn 2004	Feet from the 2004	North/South line NORTH	Feet from the 2491	East/West line EAST	County SAN JUAN
--------------------	---------------	------------------	--------------	-----------------	-----------------------	---------------------------	-----------------------	------------------------	--------------------

¹² Dedicated Acres PROJECT AREA 1,707.11 ACRES SEE DETAIL BELOW	¹³ Joint or Infill	¹⁴ Consolidation Code	¹⁵ Order No. R-8768-C
--	-------------------------------	----------------------------------	-------------------------------------

NO ALLOWABLE WILL BE ASSIGNED TO THIS COMPLETION UNTIL ALL INTERESTS HAVE BEEN CONSOLIDATED
OR A NON-STANDARD UNIT HAS BEEN APPROVED BY THE DIVISION

¹⁶ DETAIL:
SEC. 12 T32N-R7W - LOTS 1-2, SE/4 = 199.55 ACRES
SEC. 13 T32N-R7W - E/2 = 320.00 ACRES
SEC. 7 T32N-R6W - LOTS 1-7, E/2 SW/4, SE/4 NW/4, S/2 NE/4, SE/4 = 549.74 ACRES
SEC. 18 T32N-R6W - LOTS 1-4, E/2 W/2, E/2 = 637.82 ACRES

SURFACE

LATITUDE: 36°59.3992' N
LONGITUDE: 107°30.3216' W
NAD27

LATITUDE: 36.989992° N
LONGITUDE: 107.505966° W
NAD83

FIRST TAKE

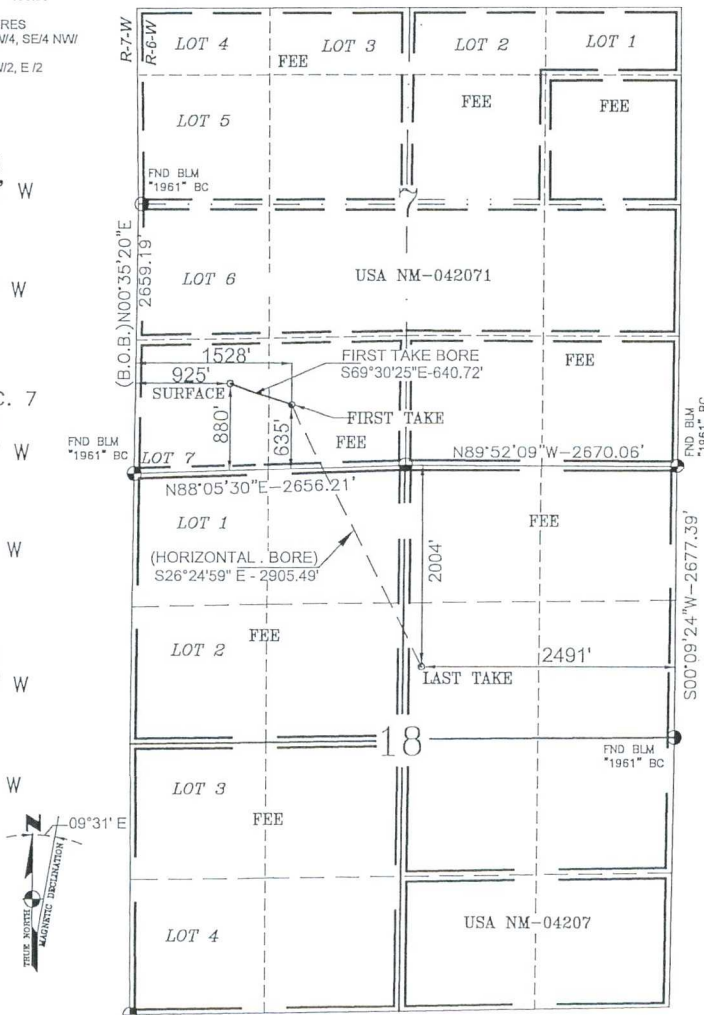
635' FSL 1528' FWL SEC. 7
LATITUDE: 36°59.3622' N
LONGITUDE: 107°30.1983' W
NAD27

LATITUDE: 36.989376° N
LONGITUDE: 107.503912° W
NAD83

LAST TAKE

LATITUDE: 36°58.9335' N
LONGITUDE: 107°29.9331' W
NAD27

LATITUDE: 36.982230° N
LONGITUDE: 107.499491° W
NAD83



¹⁷ OPERATOR CERTIFICATION

I hereby certify that the information contained herein is true and complete to the best of my knowledge and belief, and that this organization either owns a working interest or unleased mineral interest in the land including the proposed bottom hole location or has a right to drill this well at this location pursuant to a contract with an owner of such a mineral or a working interest, or to a voluntary pooling agreement or a compulsory pooling order heretofore entered by the division.

Signature
Amanda Ray
Date
Printed Name
mray@hilcorp.com
E-mail Address

¹⁸ SURVEYOR CERTIFICATION

I hereby certify that the well location shown on this plat was plotted from field notes of actual surveys made by me or under my supervision, and that the same is true and correct to the best of my belief.

MARCH 11, 2018

Date of Survey

Signature and Seal of Professional Surveyor



GLEN W. RUSSELL
Certificate Number

15703