

UNITED STATES  
DEPARTMENT OF THE INTERIOR  
BUREAU OF LAND MANAGEMENTFORM APPROVED  
OMB NO. 1004-0137  
Expires: January 31, 2018**SUNDRY NOTICES AND REPORTS ON WELLS**  
*Do not use this form for proposals to drill or to re-enter an abandoned well. Use form 3160-3 (APD) for such proposals.*5. Lease Serial No.  
NMNM03358

6. If Indian, Allottee or Tribe Name

7. If Unit or C/A/Agreement, Name and/or No.

**SUBMIT IN TRIPLICATE - Other instructions on page 2**8. Well Name and No.  
NEBU 604 COM 2H9. API Well No.  
30-045-35794-00-X110. Field and Pool or Exploratory Area  
BASIN MANCOS11. County or Parish, State  
SAN JUAN COUNTY, NM1. Type of Well  
☐ Oil Well ☒ Gas Well ☐ Other2. Name of Operator  
BP AMERICA PRODUCTION CO  
Contact: NAOMI AZULAI  
E-Mail: Naomi.Azulai@bpx.com3a. Address  
PO BOX 3092  
HOUSTON, TX 772533b. Phone No. (include area code)  
Ph: 970-232-1439

4. Location of Well (Footage, Sec., T., R., M., or Survey Description)

Sec 13 T31N R7W SWNW 1891FNL 594FWL  
36.901584 N Lat, 107.529247 W Lon**12. CHECK THE APPROPRIATE BOX(ES) TO INDICATE NATURE OF NOTICE, REPORT, OR OTHER DATA**

TYPE OF SUBMISSION	TYPE OF ACTION				
<input type="checkbox"/> Notice of Intent	<input type="checkbox"/> Acidize	<input type="checkbox"/> Deepen	<input type="checkbox"/> Production (Start/Resume)	<input type="checkbox"/> Water Shut-Off	
<input checked="" type="checkbox"/> Subsequent Report	<input type="checkbox"/> Alter Casing	<input type="checkbox"/> Hydraulic Fracturing	<input type="checkbox"/> Reclamation	<input type="checkbox"/> Well Integrity	
<input type="checkbox"/> Final Abandonment Notice	<input type="checkbox"/> Casing Repair	<input type="checkbox"/> New Construction	<input type="checkbox"/> Recomplete	<input checked="" type="checkbox"/> Other	
	<input type="checkbox"/> Change Plans	<input type="checkbox"/> Plug and Abandon	<input type="checkbox"/> Temporarily Abandon		
	<input type="checkbox"/> Convert to Injection	<input type="checkbox"/> Plug Back	<input type="checkbox"/> Water Disposal		

13. Describe Proposed or Completed Operation: Clearly state all pertinent details, including estimated starting date of any proposed work and approximate duration thereof. If the proposal is to deepen directionally or recomplete horizontally, give subsurface locations and measured and true vertical depths of all pertinent markers and zones. Attach the Bond under which the work will be performed or provide the Bond No. on file with BLM/BIA. Required subsequent reports must be filed within 30 days following completion of the involved operations. If the operation results in a multiple completion or recompletion in a new interval, a Form 3160-4 must be filed once testing has been completed. Final Abandonment Notices must be filed only after all requirements, including reclamation, have been completed and the operator has determined that the site is ready for final inspection.

3/27/2018 - 5/8/2018: 48 stages perforated and fracture stimulated - see detailed completion operation reports attached for the subject well.

Tubing has not been run in the well. A request to delay tubing installation will be provided separately.

The As Drilled surface location for the subject well is: Sec 13 T31N R07W SWNW 1891 FNL & 594 FWL

As Built C-102 attached.

5/9/2018 ? Well shut in after last frac stage.

5/24/2018 ? MIRU CTU. RIH, CIR, CO and DO frac plugs.

NMOC

SEP 05 2018

DISTRICT III

14. I hereby certify that the foregoing is true and correct.

Electronic Submission #433809 verified by the BLM Well Information System  
For BP AMERICA PRODUCTION CO, sent to the Farmington  
Committed to AFMSS for processing by WILLIAM TAMBEKOU on 09/05/2018 (18WMT1157SE)

Name (Printed/Typed) NAOMI AZULAI

Title WELL PERMITTING ANALYST

Signature (Electronic Submission)

Date 09/04/2018

**THIS SPACE FOR FEDERAL OR STATE OFFICE USE**Approved By **ACCEPTED**WILLIAM TAMBEKOU  
Title PETROLEUM ENGINEER

Date 09/05/2018

Conditions of approval, if any, are attached. Approval of this notice does not warrant or certify that the applicant holds legal or equitable title to those rights in the subject lease which would entitle the applicant to conduct operations thereon.

Office Farmington

Title 18 U.S.C. Section 1001 and Title 43 U.S.C. Section 1212, make it a crime for any person knowingly and willfully to make to any department or agency of the United States any false, fictitious or fraudulent statements or representations as to any matter within its jurisdiction.

(Instructions on page 2)

**\*\* BLM REVISED \*\* BLM REVISED \*\* BLM REVISED \*\* BLM REVISED \*\* BLM REVISED \*\***

NMOC

12

**Additional data for EC transaction #433809 that would not fit on the form**

**32. Additional remarks, continued**

5/25/2018-5/26/2018 ? Continue CIR, CO and DO frac plugs. CO to 16,880?.

5/29/2018 - Gas delivery.



**Contact I**  
1625 N. French Dr., Hobbs, NM 88240  
Home (505) 393-6101 Fax (505) 393-6720

**Contact II**  
311 S. First St., Artesia, NM 88210  
Home (505) 742-1283 Fax (505) 742-6720

**Contact III**  
1000 East Pringle Road, Artesia, NM 88210  
Home (505) 334-6178 Fax (505) 334-6170

**Contact IV**  
1230 E. St. Francis Dr., Santa Fe, NM 87505  
Home (505) 476-3469 Fax (505) 476-3462

State of New Mexico  
Energy, Minerals & Natural Resources Department  
**OIL CONSERVATION DIVISION**  
1220 South St. Francis Dr.  
Santa Fe, NM 87505  
**AS-DRILLED PLAT**

Form C-102  
Revised August 1, 2011  
Submit one copy to appropriate  
District Office

☐ AMENDED REPORT

**WELL LOCATION AND ACREAGE DEDICATION PLAT**

<sup>1</sup> API Number 30-045-35794		<sup>2</sup> Pool Code 97232		<sup>3</sup> Pool Name Mancos Gas	
<sup>4</sup> Property Code 317305		<sup>5</sup> Property Name Northeast Blanco Unit 604 Com			<sup>6</sup> Well Number 2H
<sup>7</sup> OGRID No. 000778		<sup>8</sup> Operator Name BP America Production Company			<sup>9</sup> Elevation 6501

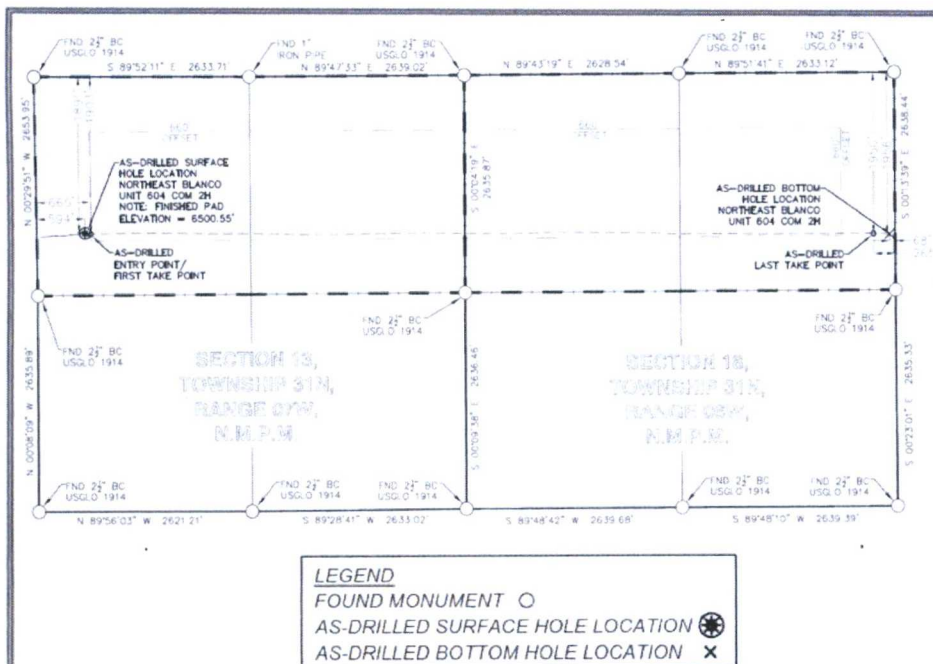
**10 Surface Location**

UL or lot no.	Section	Township	Range	Lot Idn	Feet from the	North-South line	Feet from the	East-West line	County
E	13	31N	07W		1891	North	594	West	San Juan

**11 Bottom Hole Location If Different From Surface**

UL or lot no.	Section	Township	Range	Lot Idn	Feet from the	North-South line	Feet from the	East-West line	County
H	18	31N	06W		1956	North	68	East	San Juan

<sup>12</sup> Dedicated Acres 640.00 - N/2 - SEC. 13 N/2 - SEC. 18		<sup>13</sup> Joint or Infill	<sup>14</sup> Consolidation Code	<sup>15</sup> Order No.
No allowable will be assigned to this completion until all interests have been consolidated or a non-standard unit has been approved by the division.				



**17 OPERATOR CERTIFICATION**

I hereby certify that the well location shown on this plat was placed from the best of my knowledge and belief, and that I am not aware of any other location for the well. I am not aware of any other location for the well. I am not aware of any other location for the well.

*R. Marshall* 05/09/2018  
Signature Date

Randall Marshall

Printed Name

randall.marshall@bp.com

E-mail Address

**18 SURVEYOR CERTIFICATION**

I hereby certify that the well location shown on this plat was placed from the best of my knowledge and belief, and that I am not aware of any other location for the well. I am not aware of any other location for the well.

7-22-16  
Date of Survey

Signature and Seal of Professional Surveyor



NEBU 604 COM 2H	NW 1/4 NAD'83	NAD'83	TIES
AS-DRILLED SURFACE HOLE LOCATION (SHL)	N (Y) = 2,147,644.55' E (X) = 2,812,001.69'	LAT. = 36.90158375°N LON. = 107.52924729°W	FNL = 1891' FWL = 594'
AS-DRILLED ENTRY POINT (EP)/ FIRST TAKE POINT (FTP)	N (Y) = 2,147,632.57' E (X) = 2,812,072.69'	LAT. = 36.90155023°N LON. = 107.52900459°W	FNL = 1903' FWL = 665'
AS-DRILLED LAST TAKE POINT (LTP)	N (Y) = 2,147,608.39' E (X) = 2,821,668.04'	LAT. = 36.90139522°N LON. = 107.49618781°W	FNL = 1950' FEL = 265'
AS-DRILLED BOTTOM HOLE LOCATION (BHL)	N (Y) = 2,147,602.96' E (X) = 2,821,865.44'	LAT. = 36.90137839°N LON. = 107.49551275°W	FNL = 1956' FEL = 68'



NEBU 604 COM 2H  
Completion Frac Report

Interval 1 4/19/2018	(16991-16814): With 1000 gal 15% HCL Acid, 9598 bbls Treated Slick Water, 75341 lbs Common White - 100 Mesh proppant, 278130 lbs Premium White - 40/70 proppant. Max rate of 90.9 bpm, average rate of 90.5 bpm with max pressure of 7482 psi and average pressure of 6816 psi.
Interval 2 4/19/2018	(16764-16613): With 1000 gal 15% HCL Acid, 11151 bbls Treated Slick Water, 84988 lbs Common White - 100 Mesh proppant, 340150 lbs Premium White - 40/70 proppant. Max rate of 90.5 bpm, average rate of 90.3 bpm with max pressure of 7810 psi and average pressure of 6596 psi.
Interval 3 4/19/2018	(16563-16413): With 1000 gal 15% HCL Acid, 14451 bbls Treated Slick Water, 102740 lbs Common White - 100 Mesh proppant, 355760 lbs Premium White - 40/70 proppant. Max rate of 90.4 bpm, average rate of 89.7 bpm with max pressure of 6825 psi and average pressure of 6176 psi.
Interval 4 4/20/2018	(16363-16212): With 1000 gal 15% HCL Acid, 13927 bbls Treated Slick Water, 99784 lbs Common White - 100 Mesh proppant, 399600 lbs Premium White - 40/70 proppant. Max rate of 91.3 bpm, average rate of 89.7 bpm with max pressure of 7819 psi and average pressure of 7037 psi.
Interval 5 4/20/2018	(16162-16012): With 13012 bbls Treated Slick Water, 100186 lbs Common White - 100 Mesh proppant, 399060 lbs Premium White - 40/70 proppant. Max rate of 92.6 bpm, average rate of 90.0 bpm with max pressure of 7919 psi and average pressure of 7353 psi.
Interval 6 4/20/2018	(15962-15812): With 13465 bbls Treated Slick Water, 99491 lbs Common White - 100 Mesh proppant, 401530 lbs Premium White - 40/70 proppant. Max rate of 92.0 bpm, average rate of 88.1 bpm with max pressure of 8052 psi and average pressure of 7264 psi.
Interval 7 4/21/2018	(15762-15611): With 13427 bbls Treated Slick Water, 100640 lbs Common White - 100 Mesh proppant, 399376 lbs Premium White - 40/70 proppant. Max rate of 90.2 bpm, average rate of 87.6 bpm with max pressure of 8150 psi and average pressure of 6863 psi.
Interval 8 4/21/2018	(15561-15409): With 13877 bbls Treated Slick Water, 99837 lbs Common White - 100 Mesh proppant, 400300 lbs Premium White - 40/70 proppant. Max rate of 90.4 bpm, average rate of 89.4 bpm with max pressure of 8463 psi and average pressure of 7412 psi.
Interval 9 4/21/2018	(15361-15210): With 13041 bbls Treated Slick Water, 100478 lbs Common White - 100 Mesh proppant, 400730 lbs Premium White - 40/70 proppant. Max rate of 91.0 bpm, average rate of 89.9 bpm with max pressure of 7765 psi and average pressure of 7216 psi.
Interval 10 4/21/2018	(15160-15010): With 12952 bbls Treated Slick Water, 199994 lbs Common White - 100 Mesh proppant, 399740 lbs Premium White - 40/70 proppant. Max rate of 90.8 bpm, average rate of 89.9 bpm with max pressure of 8175 psi and average pressure of 7597 psi.
Interval 11 4/22/2018	(14960-14810): With 12956 bbls Treated Slick Water, 99904 lbs Common White - 100 Mesh proppant, 400630 lbs Premium White - 40/70 proppant. Max rate of 91.2 bpm, average rate of 89.9 bpm with max pressure of 7663 psi and average pressure of 7276 psi.
Interval 12 4/22/2018	(14760-14609): With 12775 bbls Treated Slick Water, 100133 lbs Common White - 100 Mesh proppant, 400860 lbs Premium White - 40/70 proppant. Max rate of 91.4 bpm, average rate of 90.2 bpm with max pressure of 7828 psi and average pressure of 7244 psi.
Interval 13 4/23/2018	(14559-14412): With 13263 bbls Treated Slick Water, 95990 lbs Common White - 100 Mesh proppant, 404970 lbs Premium White - 40/70 proppant. Max rate of 90.9 bpm, average rate of 89.2 bpm with max pressure of 8037 psi and average pressure of 6741 psi.
Interval 14 4/23/2018	(14359-14208): With 13574 bbls Treated Slick Water, 101400 lbs Common White - 100 Mesh proppant, 399130 lbs Premium White - 40/70 proppant. Max rate of 91.9 bpm, average rate of 89.7 bpm with max pressure of 7954 psi and average pressure of 6718 psi.
Interval 15 4/23/2018	(14156-14008): With 12832 bbls Treated Slick Water, 99888 lbs Common White - 100 Mesh proppant, 401290 lbs Premium White - 40/70 proppant. Max rate of 90.5 bpm, average rate of 90.1 bpm with max pressure of 7863 psi and average pressure of 7138 psi.
Interval 16 4/23/2018	(13958-13808): With 13168 bbls Treated Slick Water, 100518 lbs Common White - 100 Mesh proppant, 400000 lbs Premium White - 40/70 proppant. Max rate of 91.5 bpm, average rate of 86.3 bpm with max pressure of 7750 psi and average pressure of 6868 psi.



NEBU 604 COM 2H  
Completion Frac Report

Interval 17 4/23/2018	(13758-13607): With 1000 gal 15% HCL Acid, 13710 bbls Treated Slick Water, 100371 lbs Common White - 100 Mesh proppant, 399720 lbs Premium White - 40/70 proppant. Max rate of 90.0 bpm, average rate of 89.1 bpm with max pressure of 7849 psi and average pressure of 6574 psi.
Interval 18 4/24/2018	(13557-13407): With 1000 gal 15% HCL Acid, 14583 bbls Treated Slick Water, 99070 lbs Common White - 100 Mesh proppant, 397400 lbs Premium White - 40/70 proppant. Max rate of 91.7 bpm, average rate of 83.5 bpm with max pressure of 7829 psi and average pressure of 6982 psi.
Interval 19 4/24/2018	(13357-13206): With 1000 gal 15% HCL Acid, 114451 bbls Treated Slick Water, 103063 lbs Common White - 100 Mesh proppant, 391527 lbs Premium White - 40/70 proppant. Max rate of 90.2 bpm, average rate of 86.2 bpm with max pressure of 8916 psi and average pressure of 6876 psi.
Interval 20 4/25/2018	(13156-13006): With 1000 gal 15% HCL Acid, 13209 bbls Treated Slick Water, 96778 lbs Common White - 100 Mesh proppant, 410046 lbs Premium White - 40/70 proppant. Max rate of 90.8 bpm, average rate of 89.9 bpm with max pressure of 7067 psi and average pressure of 6341 psi.
Interval 21 4/25/2018	(12956-12806): With 1000 gal 15% HCL Acid, 12764 bbls Treated Slick Water, 100373 lbs Common White - 100 Mesh proppant, 402934 lbs Premium White - 40/70 proppant. Max rate of 90.7 bpm, average rate of 89.8 bpm with max pressure of 6869 psi and average pressure of 6428 psi.
Interval 22 4/26/2018	(12756-12605): With 1000 gal 15% HCL Acid, 13051 bbls Treated Slick Water, 93710 lbs Common White - 100 Mesh proppant, 401520 lbs Premium White - 40/70 proppant. Max rate of 93.8 bpm, average rate of 90.7 bpm with max pressure of 6922 psi and average pressure of 6264 psi.
Interval 23 4/26/2018	(12555-12405): With 1000 gal 15% HCL Acid, 14275 bbls Treated Slick Water, 100910 lbs Common White - 100 Mesh proppant, 397000 lbs Premium White - 40/70 proppant. Max rate of 95.5 bpm, average rate of 90.6 bpm with max pressure of 7903 psi and average pressure of 6385 psi.
Interval 24 4/27/2018	(12355-12204): With 500 gal 15% HCL Acid, 12681 bbls Treated Slick Water, 97706 lbs Common White - 100 Mesh proppant, 401619 lbs Premium White - 40/70 proppant. Max rate of 91.2 bpm, average rate of 90.1 bpm with max pressure of 7492 psi and average pressure of 6263 psi.
Interval 25 4/28/2018	(12154-12002): With 500 gal 15% HCL Acid, 12875 bbls Treated Slick Water, 98190 lbs Common White - 100 Mesh proppant, 402064 lbs Premium White - 40/70 proppant. Max rate of 90.7 bpm, average rate of 89.6 bpm with max pressure of 6712 psi and average pressure of 6163 psi.
Interval 26 4/28/2018	(11954-11804): With 100 gal 15% HCL Acid, 11134 bbls Treated Slick Water, 97034 lbs Common White - 100 Mesh proppant, 401863 lbs Premium White - 40/70 proppant. Max rate of 90.5 bpm, average rate of 89.9 bpm with max pressure of 6623 psi and average pressure of 6060 psi.
Interval 27 4/29/2018	(11754-11603): With 1000 gal 15% HCL Acid, 12522 bbls Treated Slick Water, 94801 lbs Common White - 100 Mesh proppant, 405123 lbs Premium White - 40/70 proppant. Max rate of 92.6 bpm, average rate of 91.3 bpm with max pressure of 7214 psi and average pressure of 6252 psi.
Interval 28 4/29/2018	(11553-11407): With 1000 gal 15% HCL Acid, 12976 bbls Treated Slick Water, 98985 lbs Common White - 100 Mesh proppant, 402015 lbs Premium White - 40/70 proppant. Max rate of 90.4 bpm, average rate of 89.6 bpm with max pressure of 7528 psi and average pressure of 6054 psi.
Interval 29 4/30/2018	(11353-11202): With 1000 gal 15% HCL Acid, 12632 bbls Treated Slick Water, 101242 lbs Common White - 100 Mesh proppant, 400669 lbs Premium White - 40/70 proppant. Max rate of 92.6 bpm, average rate of 90.1 bpm with max pressure of 6025 psi and average pressure of 5709 psi.
Interval 30 4/30/2018	(11150-11002): With 1000 gal 15% HCL Acid, 12634 bbls Treated Slick Water, 97581 lbs Common White - 100 Mesh proppant, 399360 lbs Premium White - 40/70 proppant. Max rate of 90.5 bpm, average rate of 89.6 bpm with max pressure of 7766 psi and average pressure of 6576 psi.
Interval 31 5/1/2018	(10952-10802): With 1000 gal 15% HCL Acid, 12220 bbls Treated Slick Water, 103253 lbs Common White - 100 Mesh proppant, 399018 lbs Premium White - 40/70 proppant. Max rate of 91.4 bpm, average rate of 90.1 bpm with max pressure of 8729 psi and average pressure of 6135 psi.
Interval 32 5/1/2018	(10752-10601): With 1000 gal 15% HCL Acid, 13574 bbls Treated Slick Water, 101912 lbs Common White - 100 Mesh proppant, 402630 lbs Premium White - 40/70 proppant. Max rate of 92.6 bpm, average rate of 90.2 bpm with max pressure of 7360 psi and average pressure of 6221 psi.



NEBU 604 COM 2H  
Completion Frac Report

Interval 33 5/2/2018	(10551-10404): With 1000 gal 15% HCL Acid, 1247 bbls Treated Slick Water, 98737 lbs Common White - 100 Mesh proppant, 417508 lbs Premium White - 40/70 proppant. Max rate of 91.5 bpm, average rate of 90.9 bpm with max pressure of 7499 psi and average pressure of 6336 psi.
Interval 34 5/3/2018	(10351-10200): With 1000 gal 15% HCL Acid, 12009 bbls Treated Slick Water, 101585 lbs Common White - 100 Mesh proppant, 373956 lbs Premium White - 40/70 proppant. Max rate of 90.5 bpm, average rate of 89.4 bpm with max pressure of 7998 psi and average pressure of 6741 psi.
Interval 35 5/3/2018	(10148-10000): With 1000 gal 15% HCL Acid, 11573 bbls Treated Slick Water, 79888 lbs Common White - 100 Mesh proppant, 399746 lbs Premium White - 40/70 proppant. Max rate of 90.6 bpm, average rate of 89.1 bpm with max pressure of 8100 psi and average pressure of 7277 psi.
Interval 36 5/4/2018	(9950-9800): With 1000 gal 15% HCL Acid, 12123 bbls Treated Slick Water, 99581 lbs Common White - 100 Mesh proppant, 347708 lbs Premium White - 40/70 proppant. Max rate of 90.8 bpm, average rate of 90.0 bpm with max pressure of 7970 psi and average pressure of 6276 psi.
Interval 37 5/4/2018	(9750-9599): With 1000 gal 15% HCL Acid, 11791 bbls Treated Slick Water, 99488 lbs Common White - 100 Mesh proppant, 406200 lbs Premium White - 40/70 proppant. Max rate of 92.5 bpm, average rate of 89.9 bpm with max pressure of 7101 psi and average pressure of 6600 psi.
Interval 38 5/5/2018	(9549-9399): With 1000 gal 15% HCL Acid, 12502 bbls Treated Slick Water, 97108 lbs Common White - 100 Mesh proppant, 403517 lbs Premium White - 40/70 proppant. Max rate of 91 bpm, average rate of 90 bpm with max pressure of 8388 psi and average pressure of 6857 psi.
Interval 39 5/5/2018	(9349-9198): With 1000 gal 15% HCL Acid, 13174 bbls Treated Slick Water, 100920 lbs Common White - 100 Mesh proppant, 399283 lbs Premium White - 40/70 proppant. Max rate of 92 bpm, average rate of 91 bpm with max pressure of 8756 psi and average pressure of 6796 psi.
Interval 40 5/6/2018	(9152-8999): With 1000 gal 15% HCL Acid, 13335 bbls Treated Slick Water, 102000 lbs Common White - 100 Mesh proppant, 361410 lbs Premium White - 40/70 proppant. Max rate of 93 bpm, average rate of 89 bpm with max pressure of 8111 psi and average pressure of 6433 psi.
Interval 41 5/6/2018	(8948-8799): With 1000 gal 15% HCL Acid, 11826 bbls Treated Slick Water, 101098 lbs Common White - 100 Mesh proppant, 403695 lbs Premium White - 40/70 proppant. Max rate of 93 bpm, average rate of 91 bpm with max pressure of 7834 psi and average pressure of 6249 psi.
Interval 42 5/6/2018	(8748-8598): With 1000 gal 15% HCL Acid, 12225 bbls Treated Slick Water, 101316 lbs Common White - 100 Mesh proppant, 397950 lbs Premium White - 40/70 proppant. Max rate of 90 bpm, average rate of 89 bpm with max pressure of 8505 psi and average pressure of 6693 psi.
Interval 43 5/7/2018	(8547-8398): With 1000 gal 15% HCL Acid, 13026 bbls Treated Slick Water, 99192 lbs Common White - 100 Mesh proppant, 400820 lbs Premium White - 40/70 proppant. Max rate of 90 bpm, average rate of 84 bpm with max pressure of 8004 psi and average pressure of 6717 psi.
Interval 44 5/7/2018	(8347-8197): With 1000 gal 15% HCL Acid, 10913 bbls Treated Slick Water, 100139 lbs Common White - 100 Mesh proppant, 400502 lbs Premium White - 40/70 proppant. Max rate of 91 bpm, average rate of 90 bpm with max pressure of 8260 psi and average pressure of 6375 psi.
Interval 45 5/7/2018	(8146-7997): With 1000 gal 15% HCL Acid, 11996 bbls Treated Slick Water, 98169 lbs Common White - 100 Mesh proppant, 399640 lbs Premium White - 40/70 proppant. Max rate of 90 bpm, average rate of 90 bpm with max pressure of 7365 psi and average pressure of 6000 psi.
Interval 46 5/8/2018	(7946-7797): With 1000 gal 15% HCL Acid, 12551 bbls Treated Slick Water, 100487 lbs Common White - 100 Mesh proppant, 398621 lbs Premium White - 40/70 proppant. Max rate of 90 bpm, average rate of 89 bpm with max pressure of 6816 psi and average pressure of 6348psi.
Interval 47 5/8/2018	(7746-7594): With 1000 gal 15% HCL Acid, 11766 bbls Treated Slick Water, 99877 lbs Common White - 100 Mesh proppant, 400171 lbs Premium White - 40/70 proppant. Max rate of 90.3 bpm, average rate of 89.7 bpm with max pressure of 7711 psi and average pressure of 5937 psi.
Interval 48 5/8/2018	(7545-7397): With 1000 gal 15% HCL Acid, 12120 bbls Treated Slick Water, 96931 lbs Common White - 100 Mesh proppant, 405070 lbs Premium White - 40/70 proppant. Max rate of 91 bpm, average rate of 90 bpm with max pressure of 6803 psi and average pressure of 5920 psi.



## NEBU 604-2H 30-045-35794

Perforation Report March 27, 2018 to May 8, 2018

3 1/8" gun used to make 0.430" diam. holes at 60 degree phasing. 4 spf. 8 holes/cluster (except stages 1 and 2)

Stage	Cluster #1		Cluster #2		Cluster #3		Cluster #4		Cluster #5		Cluster #6		Cluster #7		Cluster #8		Holes/ Stage
	top	bottom	top	bottom	top	bottom	top	bottom	top	bottom	top	bottom	top	bottom	top	bottom	
1	toe sleeve @	16,991.00	16,943.00	16,941.00	16,922.00	16,920.00	16,900.00	16,898.00	16,879.00	16,877.00	16,858.00	16,856.00	16,837.00	16,835.00	16,816.00	16,814.00	56
2	16,764.00	16,762.00	16,742.00	16,740.00	16,721.00	16,719.00	16,700.00	16,698.00	16,679.00	16,677.00	16,658.00	16,656.00	16,636.00	16,634.00	16,615.00	16,613.00	56
3	16,563.00	16,561.00	16,542.00	16,540.00	16,521.00	16,519.00	16,500.00	16,498.00	16,478.00	16,476.00	16,457.00	16,455.00	16,436.00	16,434.00	16,415.00	16,413.00	64
4	16,363.00	16,361.00	16,342.00	16,340.00	16,320.00	16,318.00	16,299.00	16,297.00	16,278.00	16,276.00	16,257.00	16,255.00	16,236.00	16,234.00	16,214.00	16,212.00	64
5	16,162.00	16,160.00	16,141.00	16,139.00	16,120.00	16,118.00	16,099.00	16,097.00	16,078.00	16,076.00	16,056.00	16,054.00	16,035.00	16,033.00	16,014.00	16,012.00	64
6	15,962.00	15,960.00	15,941.00	15,939.00	15,920.00	15,918.00	15,898.00	15,896.00	15,877.00	15,875.00	15,856.00	15,854.00	15,835.00	15,833.00	15,814.00	15,812.00	64
7	15,762.00	15,760.00	15,740.00	15,738.00	15,719.00	15,717.00	15,698.00	15,696.00	15,677.00	15,675.00	15,656.00	15,654.00	15,634.00	15,632.00	15,613.00	15,611.00	64
8	15,561.00	15,559.00	15,540.00	15,538.00	15,519.00	15,517.00	15,498.00	15,496.00	15,476.00	15,474.00	15,455.00	15,453.00	15,434.00	15,432.00	15,411.00	15,409.00	64
9	15,361.00	15,359.00	15,340.00	15,338.00	15,318.00	15,316.00	15,297.00	15,295.00	15,276.00	15,274.00	15,255.00	15,253.00	15,234.00	15,232.00	15,212.00	15,210.00	64
10	15,160.00	15,158.00	15,139.00	15,137.00	15,118.00	15,116.00	15,097.00	15,095.00	15,076.00	15,074.00	15,054.00	15,052.00	15,033.00	15,031.00	15,012.00	15,010.00	64
11	14,960.00	14,958.00	14,939.00	14,937.00	14,918.00	14,916.00	14,896.00	14,894.00	14,875.00	14,873.00	14,854.00	14,852.00	14,833.00	14,831.00	14,812.00	14,810.00	64
12	14,760.00	14,758.00	14,738.00	14,736.00	14,717.00	14,715.00	14,696.00	14,694.00	14,675.00	14,673.00	14,654.00	14,652.00	14,632.00	14,630.00	14,611.00	14,609.00	64
13	14,559.00	14,557.00	14,538.00	14,536.00	14,517.00	14,515.00	14,500.00	14,498.00	14,474.00	14,472.00	14,448.00	14,446.00	14,432.00	14,430.00	14,414.00	14,412.00	64
14	14,359.00	14,357.00	14,340.00	14,338.00	14,316.00	14,314.00	14,295.00	14,293.00	14,274.00	14,272.00	14,253.00	14,251.00	14,232.00	14,230.00	14,210.00	14,208.00	64
15	14,156.00	14,154.00	14,137.00	14,135.00	14,116.00	14,114.00	14,095.00	14,093.00	14,072.00	14,070.00	14,052.00	14,050.00	14,031.00	14,029.00	14,010.00	14,008.00	64
16	13,958.00	13,956.00	13,937.00	13,935.00	13,916.00	13,914.00	13,894.00	13,892.00	13,873.00	13,871.00	13,852.00	13,850.00	13,831.00	13,829.00	13,810.00	13,808.00	64
17	13,758.00	13,756.00	13,736.00	13,734.00	13,715.00	13,713.00	13,694.00	13,692.00	13,673.00	13,671.00	13,652.00	13,650.00	13,630.00	13,628.00	13,609.00	13,607.00	64
18	13,557.00	13,555.00	13,536.00	13,534.00	13,515.00	13,513.00	13,494.00	13,492.00	13,472.00	13,470.00	13,451.00	13,449.00	13,430.00	13,428.00	13,409.00	13,407.00	64
19	13,357.00	13,355.00	13,336.00	13,334.00	13,314.00	13,312.00	13,293.00	13,291.00	13,272.00	13,270.00	13,251.00	13,249.00	13,230.00	13,228.00	13,208.00	13,206.00	64
20	13,156.00	13,154.00	13,135.00	13,133.00	13,114.00	13,112.00	13,093.00	13,091.00	13,072.00	13,070.00	13,050.00	13,048.00	13,029.00	13,027.00	13,008.00	13,006.00	64
21	12,956.00	12,954.00	12,935.00	12,933.00	12,914.00	12,912.00	12,892.00	12,890.00	12,871.00	12,869.00	12,850.00	12,848.00	12,829.00	12,827.00	12,808.00	12,806.00	64
22	12,756.00	12,754.00	12,734.00	12,732.00	12,713.00	12,711.00	12,692.00	12,690.00	12,666.00	12,664.00	12,650.00	12,648.00	12,630.00	12,628.00	12,607.00	12,605.00	64
23	12,555.00	12,553.00	12,534.00	12,532.00	12,513.00	12,511.00	12,492.00	12,490.00	12,470.00	12,468.00	12,449.00	12,447.00	12,428.00	12,426.00	12,407.00	12,405.00	64
24	12,355.00	12,353.00	12,334.00	12,332.00	12,312.00	12,310.00	12,291.00	12,289.00	12,270.00	12,268.00	12,249.00	12,247.00	12,228.00	12,226.00	12,206.00	12,204.00	64
25	12,154.00	12,152.00	12,131.00	12,129.00	12,112.00	12,110.00	12,094.00	12,092.00	12,070.00	12,068.00	12,046.00	12,044.00	12,027.00	12,025.00	12,004.00	12,002.00	64
26	11,954.00	11,952.00	11,933.00	11,931.00	11,912.00	11,910.00	11,890.00	11,888.00	11,869.00	11,867.00	11,848.00	11,846.00	11,827.00	11,825.00	11,806.00	11,804.00	64
27	11,754.00	11,752.00	11,732.00	11,730.00	11,711.00	11,709.00	11,690.00	11,688.00	11,669.00	11,667.00	11,648.00	11,646.00	11,626.00	11,624.00	11,605.00	11,603.00	64
28	11,553.00	11,551.00	11,534.00	11,532.00	11,511.00	11,509.00	11,492.00	11,490.00	11,468.00	11,466.00	11,450.00	11,448.00	11,426.00	11,424.00	11,409.00	11,407.00	64
29	11,353.00	11,351.00	11,332.00	11,330.00	11,310.00	11,308.00	11,289.00	11,287.00	11,268.00	11,266.00	11,247.00	11,245.00	11,226.00	11,224.00	11,204.00	11,202.00	64
30	11,150.00	11,148.00	11,131.00	11,129.00	11,108.00	11,106.00	11,089.00	11,087.00	11,066.00	11,064.00	11,046.00	11,044.00	11,025.00	11,023.00	11,004.00	11,002.00	64
31	10,952.00	10,950.00	10,931.00	10,929.00	10,910.00	10,908.00	10,888.00	10,886.00	10,867.00	10,865.00	10,846.00	10,844.00	10,825.00	10,823.00	10,804.00	10,802.00	64
32	10,752.00	10,750.00	10,730.00	10,728.00	10,709.00	10,707.00	10,688.00	10,686.00	10,667.00	10,665.00	10,646.00	10,644.00	10,624.00	10,622.00	10,603.00	10,601.00	64
33	10,551.00	10,549.00	10,532.00	10,530.00	10,509.00	10,507.00	10,488.00	10,486.00	10,466.00	10,464.00	10,447.00	10,445.00	10,424.00	10,422.00	10,406.00	10,404.00	64
34	10,351.00	10,349.00	10,330.00	10,328.00	10,308.00	10,306.00	10,287.00	10,285.00	10,266.00	10,264.00	10,247.00	10,245.00	10,224.00	10,222.00	10,202.00	10,200.00	64
35	10,148.00	10,142.00	10,129.00	10,127.00	10,104.00	10,102.00	10,087.00	10,085.00	10,062.00	10,060.00	10,044.00	10,042.00	10,019.00	10,017.00	10,002.00	10,000.00	64
36	9,950.00	9,948.00	9,929.00	9,927.00	9,908.00	9,906.00	9,886.00	9,884.00	9,865.00	9,863.00	9,844.00	9,842.00	9,823.00	9,821.00	9,802.00	9,800.00	64
37	9,750.00	9,748.00	9,728.00	9,726.00	9,707.00	9,705.00	9,686.00	9,684.00	9,665.00	9,663.00	9,644.00	9,642.00	9,622.00	9,620.00	9,601.00	9,599.00	64
38	9,549.00	9,547.00	9,528.00	9,526.00	9,507.00	9,505.00	9,486.00	9,484.00	9,464.00	9,462.00	9,443.00	9,441.00	9,422.00	9,420.00	9,401.00	9,399.00	64
39	9,349.00	9,347.50	9,328.00	9,326.50	9,306.00	9,304.50	9,285.00	9,283.50	9,264.00	9,262.50	9,243.00	9,241.50	9,222.00	9,220.50	9,200.00	9,198.50	64
40	9,151.50	9,150.00	9,127.00	9,125.50	9,108.50	9,107.00	9,085.00	9,083.50	9,068.50	9,067.00	9,042.00	9,040.50	9,015.50	9,014.00	9,000.00	8,998.50	64
41	8,948.00	8,946.50	8,927.00	8,925.50	8,906.00	8,904.50	8,884.00	8,882.50	8,863.00	8,861.50	8,842.00	8,840.50	8,821.00	8,819.50	8,800.00	8,798.50	64
42	8,748.00	8,746.50	8,726.00	8,724.50	8,705.00	8,703.50	8,684.00	8,682.50	8,663.00	8,661.50	8,642.00	8,640.50	8,620.00	8,618.50	8,599.00	8,597.50	64
43	8,547.00	8,545.50	8,527.00	8,525.50	8,505.00	8,503.50	8,484.00	8,482.50	8,462.00	8,460.50	8,441.00	8,439.50	8,420.00	8,418.50	8,399.00	8,397.50	64
44	8,347.00	8,345.50	8,327.00	8,325.50	8,304.00	8,302.50	8,283.00	8,281.50	8,262.00	8,260.50	8,241.00	8,239.50	8,220.00	8,218.50	8,198.00	8,196.50	64
45	8,146.00	8,144.50	8,125.00	8,123.50	8,104.00	8,102.50	8,083.00	8,081.50	8,062.00	8,060.50	8,040.00	8,038.50	8,019.00	8,017.50	7,998.00	7,996.50	64
46	7,946.00	7,944.50	7,925.00	7,923.50	7,904.00	7,902.50	7,882.00	7,880.50	7,861.00	7,859.50	7,840.00	7,838.50	7,819.00	7,817.50	7,798.00	7,796.50	64
47	7,746.00	7,744.50	7,719.50	7,718.00	7,703.00	7,701.50	7,685.50	7,684.00	7,661.00	7,659.50	7,637.50	7,636.00	7,618.00	7,616.50	7,595.50	7,594.00	64
48	7,545.00	7,543.50	7,524.00	7,522.50	7,503.00	7,501.50	7,482.00	7,480.50	7,460.00	7,458.50	7,439.00	7,437.50	7,418.00	7,416.50	7,398.50	7,397.00	64



UNITED STATES  
DEPARTMENT OF THE INTERIOR  
BUREAU OF LAND MANAGEMENTFORM APPROVED  
OMB NO. 1004-0137  
Expires: January 31, 2018**SUNDRY NOTICES AND REPORTS ON WELLS**  
*Do not use this form for proposals to drill or to re-enter an abandoned well. Use form 3160-3 (APD) for such proposals.*5. Lease Serial No.  
NMNM03358

6. If Indian, Allottee or Tribe Name

7. If Unit or CA/Agreement, Name and/or No.

**SUBMIT IN TRIPLICATE - Other instructions on page 2**8. Well Name and No.  
NEBU 604 COM 2H9. API Well No.  
30-045-35794-00-X110. Field and Pool or Exploratory Area  
BASIN MANCOS11. County or Parish, State  
SAN JUAN COUNTY, NM

1. Type of Well

☐ Oil Well ☒ Gas Well ☐ Other2. Name of Operator  
BP AMERICA PRODUCTION COContact: PATTI CAMPBELL  
E-Mail: patti.campbell@bpx.com3a. Address  
PO BOX 3092  
HOUSTON, TX 772533b. Phone No. (include area code)  
Ph: 970-712-5997

4. Location of Well (Footage, Sec., T., R., M., or Survey Description)

Sec 13 T31N R7W SWNW 1891FNL 594FWL  
36.901585 N Lat, 107.529243 W Lon**12. CHECK THE APPROPRIATE BOX(ES) TO INDICATE NATURE OF NOTICE, REPORT, OR OTHER DATA**

TYPE OF SUBMISSION	TYPE OF ACTION			
<input type="checkbox"/> Notice of Intent	<input type="checkbox"/> Acidize	<input type="checkbox"/> Deepen	<input type="checkbox"/> Production (Start/Resume)	<input type="checkbox"/> Water Shut-Off
<input checked="" type="checkbox"/> Subsequent Report	<input type="checkbox"/> Alter Casing	<input type="checkbox"/> Hydraulic Fracturing	<input type="checkbox"/> Reclamation	<input type="checkbox"/> Well Integrity
<input type="checkbox"/> Final Abandonment Notice	<input type="checkbox"/> Casing Repair	<input type="checkbox"/> New Construction	<input type="checkbox"/> Recomplete	<input checked="" type="checkbox"/> Other
	<input type="checkbox"/> Change Plans	<input type="checkbox"/> Plug and Abandon	<input type="checkbox"/> Temporarily Abandon	
	<input type="checkbox"/> Convert to Injection	<input type="checkbox"/> Plug Back	<input type="checkbox"/> Water Disposal	

13. Describe Proposed or Completed Operation: Clearly state all pertinent details, including estimated starting date of any proposed work and approximate duration thereof. If the proposal is to deepen directionally or recompleat horizontally, give subsurface locations and measured and true vertical depths of all pertinent markers and zones. Attach the Bond under which the work will be performed or provide the Bond No. on file with BLM/BIA. Required subsequent reports must be filed within 30 days following completion of the involved operations. If the operation results in a multiple completion or recompleat in a new interval, a Form 3160-4 must be filed once testing has been completed. Final Abandonment Notices must be filed only after all requirements, including reclamation, have been completed and the operator has determined that the site is ready for final inspection.

3/27/2018 - 5/8/2018: 48 stages perforated and fracture stimulated.

Please see detailed completion operation reports attached for the subject well.  
Tubing has not been run in the well.

A request to delay tubing installation will be provided separately.

\*\*Please note the As Drilled surface location for the subject well is:  
Sec 13 T31N R07W SWNW 1891 FNL & 594 FWL

As Built C-102 attached.

14. I hereby certify that the foregoing is true and correct.

**Electronic Submission #432148 verified by the BLM Well Information System  
For BP AMERICA PRODUCTION CO, sent to the Farmington  
Committed to AFMSS for processing by JACK SAVAGE on 08/22/2018 (18JWS0195SE)**

Name (Printed/Typed) PATTI CAMPBELL

Title REGULATORY ANALYST

Signature (Electronic Submission)

Date 08/21/2018

**THIS SPACE FOR FEDERAL OR STATE OFFICE USE**

Approved By JACK SAVAGE

Title PETROLEUM ENGINEER

Date 08/22/2018

Conditions of approval, if any, are attached. Approval of this notice does not warrant or certify that the applicant holds legal or equitable title to those rights in the subject lease which would entitle the applicant to conduct operations thereon.

Office Farmington

Title 18 U.S.C. Section 1001 and Title 43 U.S.C. Section 1212, make it a crime for any person knowingly and willfully to make to any department or agency of the United States any false, fictitious or fraudulent statements or representations as to any matter within its jurisdiction.

(Instructions on page 2)

**\*\* BLM REVISED \*\* BLM REVISED \*\* BLM REVISED \*\* BLM REVISED \*\* BLM REVISED \*\*****NMOC**



## NEBU 604-2H 30-045-35794

Perforation Report March 27, 2018 to May 8, 2018

3 1/8" gun used to make 0.430" diam. holes at 60 degree phasing. 4 spf. 8 holes/cluster (except stages 1 and 2)

Stage	Cluster #1		Cluster #2		Cluster #3		Cluster #4		Cluster #5		Cluster #6		Cluster #7		Cluster #8		Holes/ Stage
	top	bottom	top	bottom	top	bottom	top	bottom	top	bottom	top	bottom	top	bottom	top	bottom	
1	toe sleeve @	16,991.00	16,943.00	16,941.00	16,922.00	16,920.00	16,900.00	16,898.00	16,879.00	16,877.00	16,858.00	16,856.00	16,837.00	16,835.00	16,816.00	16,814.00	56
2	16,764.00	16,762.00	16,742.00	16,740.00	16,721.00	16,719.00	16,700.00	16,698.00	16,679.00	16,677.00	16,658.00	16,656.00	16,636.00	16,634.00	16,615.00	16,613.00	56
3	16,563.00	16,561.00	16,542.00	16,540.00	16,521.00	16,519.00	16,500.00	16,498.00	16,478.00	16,476.00	16,457.00	16,455.00	16,436.00	16,434.00	16,415.00	16,413.00	64
4	16,363.00	16,361.00	16,342.00	16,340.00	16,320.00	16,318.00	16,299.00	16,297.00	16,278.00	16,276.00	16,257.00	16,255.00	16,236.00	16,234.00	16,214.00	16,212.00	64
5	16,162.00	16,160.00	16,141.00	16,139.00	16,120.00	16,118.00	16,099.00	16,097.00	16,078.00	16,076.00	16,056.00	16,054.00	16,035.00	16,033.00	16,014.00	16,012.00	64
6	15,962.00	15,960.00	15,941.00	15,939.00	15,920.00	15,918.00	15,898.00	15,896.00	15,877.00	15,875.00	15,856.00	15,854.00	15,835.00	15,833.00	15,814.00	15,812.00	64
7	15,762.00	15,760.00	15,740.00	15,738.00	15,719.00	15,717.00	15,698.00	15,696.00	15,677.00	15,675.00	15,656.00	15,654.00	15,634.00	15,632.00	15,613.00	15,611.00	64
8	15,561.00	15,559.00	15,540.00	15,538.00	15,519.00	15,517.00	15,498.00	15,496.00	15,476.00	15,474.00	15,455.00	15,453.00	15,434.00	15,432.00	15,411.00	15,409.00	64
9	15,361.00	15,359.00	15,340.00	15,338.00	15,318.00	15,316.00	15,297.00	15,295.00	15,276.00	15,274.00	15,255.00	15,253.00	15,234.00	15,232.00	15,212.00	15,210.00	64
10	15,160.00	15,158.00	15,139.00	15,137.00	15,118.00	15,116.00	15,097.00	15,095.00	15,076.00	15,074.00	15,054.00	15,052.00	15,033.00	15,031.00	15,012.00	15,010.00	64
11	14,960.00	14,958.00	14,939.00	14,937.00	14,918.00	14,916.00	14,896.00	14,894.00	14,875.00	14,873.00	14,854.00	14,852.00	14,833.00	14,831.00	14,812.00	14,810.00	64
12	14,760.00	14,758.00	14,738.00	14,736.00	14,717.00	14,715.00	14,696.00	14,694.00	14,675.00	14,673.00	14,654.00	14,652.00	14,632.00	14,630.00	14,611.00	14,609.00	64
13	14,559.00	14,557.00	14,538.00	14,536.00	14,517.00	14,515.00	14,500.00	14,498.00	14,474.00	14,472.00	14,448.00	14,446.00	14,432.00	14,430.00	14,414.00	14,412.00	64
14	14,359.00	14,357.00	14,340.00	14,338.00	14,316.00	14,314.00	14,295.00	14,293.00	14,274.00	14,272.00	14,253.00	14,251.00	14,232.00	14,230.00	14,210.00	14,208.00	64
15	14,156.00	14,154.00	14,137.00	14,135.00	14,116.00	14,114.00	14,095.00	14,093.00	14,072.00	14,070.00	14,052.00	14,050.00	14,031.00	14,029.00	14,010.00	14,008.00	64
16	13,958.00	13,956.00	13,937.00	13,935.00	13,916.00	13,914.00	13,894.00	13,892.00	13,873.00	13,871.00	13,852.00	13,850.00	13,831.00	13,829.00	13,810.00	13,808.00	64
17	13,758.00	13,756.00	13,736.00	13,734.00	13,715.00	13,713.00	13,694.00	13,692.00	13,673.00	13,671.00	13,652.00	13,650.00	13,630.00	13,628.00	13,609.00	13,607.00	64
18	13,557.00	13,555.00	13,536.00	13,534.00	13,515.00	13,513.00	13,494.00	13,492.00	13,472.00	13,470.00	13,451.00	13,449.00	13,430.00	13,428.00	13,409.00	13,407.00	64
19	13,357.00	13,355.00	13,336.00	13,334.00	13,314.00	13,312.00	13,293.00	13,291.00	13,272.00	13,270.00	13,251.00	13,249.00	13,230.00	13,228.00	13,208.00	13,206.00	64
20	13,156.00	13,154.00	13,135.00	13,133.00	13,114.00	13,112.00	13,093.00	13,091.00	13,072.00	13,070.00	13,050.00	13,048.00	13,029.00	13,027.00	13,008.00	13,006.00	64
21	12,956.00	12,954.00	12,935.00	12,933.00	12,914.00	12,912.00	12,892.00	12,890.00	12,871.00	12,869.00	12,850.00	12,848.00	12,829.00	12,827.00	12,808.00	12,806.00	64
22	12,756.00	12,754.00	12,734.00	12,732.00	12,713.00	12,711.00	12,692.00	12,690.00	12,666.00	12,664.00	12,650.00	12,648.00	12,630.00	12,628.00	12,607.00	12,605.00	64
23	12,555.00	12,553.00	12,534.00	12,532.00	12,513.00	12,511.00	12,492.00	12,490.00	12,470.00	12,468.00	12,449.00	12,447.00	12,428.00	12,426.00	12,407.00	12,405.00	64
24	12,355.00	12,353.00	12,334.00	12,332.00	12,312.00	12,310.00	12,291.00	12,289.00	12,270.00	12,268.00	12,249.00	12,247.00	12,228.00	12,226.00	12,206.00	12,204.00	64
25	12,154.00	12,152.00	12,131.00	12,129.00	12,112.00	12,110.00	12,094.00	12,092.00	12,070.00	12,068.00	12,046.00	12,044.00	12,027.00	12,025.00	12,004.00	12,002.00	64
26	11,954.00	11,952.00	11,933.00	11,931.00	11,912.00	11,910.00	11,890.00	11,888.00	11,869.00	11,867.00	11,848.00	11,846.00	11,827.00	11,825.00	11,806.00	11,804.00	64
27	11,754.00	11,752.00	11,732.00	11,730.00	11,711.00	11,709.00	11,690.00	11,688.00	11,669.00	11,667.00	11,648.00	11,646.00	11,626.00	11,624.00	11,605.00	11,603.00	64
28	11,553.00	11,551.00	11,534.00	11,532.00	11,511.00	11,509.00	11,492.00	11,490.00	11,468.00	11,466.00	11,450.00	11,448.00	11,426.00	11,424.00	11,409.00	11,407.00	64
29	11,353.00	11,351.00	11,332.00	11,330.00	11,310.00	11,308.00	11,289.00	11,287.00	11,268.00	11,266.00	11,247.00	11,245.00	11,226.00	11,224.00	11,204.00	11,202.00	64
30	11,150.00	11,148.00	11,131.00	11,129.00	11,108.00	11,106.00	11,089.00	11,087.00	11,066.00	11,064.00	11,046.00	11,044.00	11,025.00	11,023.00	11,004.00	11,002.00	64
31	10,952.00	10,950.00	10,931.00	10,929.00	10,910.00	10,908.00	10,888.00	10,886.00	10,867.00	10,865.00	10,846.00	10,844.00	10,825.00	10,823.00	10,804.00	10,802.00	64
32	10,752.00	10,750.00	10,730.00	10,728.00	10,709.00	10,707.00	10,688.00	10,686.00	10,667.00	10,665.00	10,646.00	10,644.00	10,624.00	10,622.00	10,603.00	10,601.00	64
33	10,551.00	10,549.00	10,532.00	10,530.00	10,509.00	10,507.00	10,488.00	10,486.00	10,466.00	10,464.00	10,447.00	10,445.00	10,424.00	10,422.00	10,406.00	10,404.00	64
34	10,351.00	10,349.00	10,330.00	10,328.00	10,308.00	10,306.00	10,287.00	10,285.00	10,266.00	10,264.00	10,247.00	10,245.00	10,224.00	10,222.00	10,202.00	10,200.00	64
35	10,148.00	10,142.00	10,129.00	10,127.00	10,104.00	10,102.00	10,087.00	10,085.00	10,062.00	10,060.00	10,044.00	10,042.00	10,019.00	10,017.00	10,002.00	10,000.00	64
36	9,950.00	9,948.00	9,929.00	9,927.00	9,908.00	9,906.00	9,886.00	9,884.00	9,865.00	9,863.00	9,844.00	9,842.00	9,823.00	9,821.00	9,802.00	9,800.00	64
37	9,750.00	9,748.00	9,728.00	9,726.00	9,707.00	9,705.00	9,686.00	9,684.00	9,665.00	9,663.00	9,644.00	9,642.00	9,622.00	9,620.00	9,601.00	9,599.00	64
38	9,549.00	9,547.00	9,528.00	9,526.00	9,507.00	9,505.00	9,486.00	9,484.00	9,464.00	9,462.00	9,443.00	9,441.00	9,422.00	9,420.00	9,401.00	9,399.00	64
39	9,349.00	9,347.50	9,328.00	9,326.50	9,306.00	9,304.50	9,285.00	9,283.50	9,264.00	9,262.50	9,243.00	9,241.50	9,222.00	9,220.50	9,200.00	9,198.50	64
40	9,151.50	9,150.00	9,127.00	9,125.50	9,108.50	9,107.00	9,085.00	9,083.50	9,068.50	9,067.00	9,042.00	9,040.50	9,015.50	9,014.00	9,000.00	8,998.50	64
41	8,948.00	8,946.50	8,927.00	8,925.50	8,906.00	8,904.50	8,884.00	8,882.50	8,863.00	8,861.50	8,842.00	8,840.50	8,821.00	8,819.50	8,800.00	8,798.50	64
42	8,748.00	8,746.50	8,726.00	8,724.50	8,705.00	8,703.50	8,684.00	8,682.50	8,663.00	8,661.50	8,642.00	8,640.50	8,620.00	8,618.50	8,599.00	8,597.50	64
43	8,547.00	8,545.50	8,527.00	8,525.50	8,505.00	8,503.50	8,484.00	8,482.50	8,462.00	8,460.50	8,441.00	8,439.50	8,420.00	8,418.50	8,399.00	8,397.50	64
44	8,347.00	8,345.50	8,327.00	8,325.50	8,304.00	8,302.50	8,283.00	8,281.50	8,262.00	8,260.50	8,241.00	8,239.50	8,220.00	8,218.50	8,198.00	8,196.50	64
45	8,146.00	8,144.50	8,125.00	8,123.50	8,104.00	8,102.50	8,083.00	8,081.50	8,062.00	8,060.50	8,040.00	8,038.50	8,019.00	8,017.50	7,998.00	7,996.50	64
46	7,946.00	7,944.50	7,925.00	7,923.50	7,904.00	7,902.50	7,882.00	7,880.50	7,861.00	7,859.50	7,840.00	7,838.50	7,819.00	7,817.50	7,798.00	7,796.50	64
47	7,746.00	7,744.50	7,719.50	7,718.00	7,703.00	7,701.50	7,685.50	7,684.00	7,661.00	7,659.50	7,637.50	7,636.00	7,618.00	7,616.50	7,595.50	7,594.00	64
48	7,545.00	7,543.50	7,524.00	7,522.50	7,503.00	7,501.50	7,482.00	7,480.50	7,460.00	7,458.50	7,439.00	7,437.50	7,418.00	7,416.50	7,398.50	7,397.00	64



NEBU 604 COM 2H  
Completion Frac Report

Interval 1 4/19/2018	(16991-16814): With 1000 gal 15% HCL Acid, 9598 bbls Treated Slick Water, 75341 lbs Common White - 100 Mesh proppant, 278130 lbs Premium White - 40/70 proppant. Max rate of 90.9 bpm, average rate of 90.5 bpm with max pressure of 7482 psi and average pressure of 6816 psi.
Interval 2 4/19/2018	(16764-16613): With 1000 gal 15% HCL Acid, 11151 bbls Treated Slick Water, 84988 lbs Common White - 100 Mesh proppant, 340150 lbs Premium White - 40/70 proppant. Max rate of 90.5 bpm, average rate of 90.3 bpm with max pressure of 7810 psi and average pressure of 6596 psi.
Interval 3 4/19/2018	(16563-16413): With 1000 gal 15% HCL Acid, 14451 bbls Treated Slick Water, 102740 lbs Common White - 100 Mesh proppant, 355760 lbs Premium White - 40/70 proppant. Max rate of 90.4 bpm, average rate of 89.7 bpm with max pressure of 6825 psi and average pressure of 6176 psi.
Interval 4 4/20/2018	(16363-16212): With 1000 gal 15% HCL Acid, 13927 bbls Treated Slick Water, 99784 lbs Common White - 100 Mesh proppant, 399600 lbs Premium White - 40/70 proppant. Max rate of 91.3 bpm, average rate of 89.7 bpm with max pressure of 7819 psi and average pressure of 7037 psi.
Interval 5 4/20/2018	(16162-16012): With 13012 bbls Treated Slick Water, 100186 lbs Common White - 100 Mesh proppant, 399060 lbs Premium White - 40/70 proppant. Max rate of 92.6 bpm, average rate of 90.0 bpm with max pressure of 7919 psi and average pressure of 7353 psi.
Interval 6 4/20/2018	(15962-15812): With 13465 bbls Treated Slick Water, 99491 lbs Common White - 100 Mesh proppant, 401530 lbs Premium White - 40/70 proppant. Max rate of 92.0 bpm, average rate of 88.1 bpm with max pressure of 8052 psi and average pressure of 7264 psi.
Interval 7 4/21/2018	(15762-15611): With 13427 bbls Treated Slick Water, 100640 lbs Common White - 100 Mesh proppant, 399376 lbs Premium White - 40/70 proppant. Max rate of 90.2 bpm, average rate of 87.6 bpm with max pressure of 8150 psi and average pressure of 6863 psi.
Interval 8 4/21/2018	(15561-15409): With 13877 bbls Treated Slick Water, 99837 lbs Common White - 100 Mesh proppant, 400300 lbs Premium White - 40/70 proppant. Max rate of 90.4 bpm, average rate of 89.4 bpm with max pressure of 8463 psi and average pressure of 7412 psi.
Interval 9 4/21/2018	(15361-15210): With 13041 bbls Treated Slick Water, 100478 lbs Common White - 100 Mesh proppant, 400730 lbs Premium White - 40/70 proppant. Max rate of 91.0 bpm, average rate of 89.9 bpm with max pressure of 7765 psi and average pressure of 7216 psi.
Interval 10 4/21/2018	(15160-15010): With 12952 bbls Treated Slick Water, 199994 lbs Common White - 100 Mesh proppant, 399740 lbs Premium White - 40/70 proppant. Max rate of 90.8 bpm, average rate of 89.9 bpm with max pressure of 8175 psi and average pressure of 7597 psi.
Interval 11 4/22/2018	(14960-14810): With 12956 bbls Treated Slick Water, 99904 lbs Common White - 100 Mesh proppant, 400630 lbs Premium White - 40/70 proppant. Max rate of 91.2 bpm, average rate of 89.9 bpm with max pressure of 7663 psi and average pressure of 7276 psi.
Interval 12 4/22/2018	(14760-14609): With 12775 bbls Treated Slick Water, 100133 lbs Common White - 100 Mesh proppant, 400860 lbs Premium White - 40/70 proppant. Max rate of 91.4 bpm, average rate of 90.2 bpm with max pressure of 7828 psi and average pressure of 7244 psi.
Interval 13 4/23/2018	(14559-14412): With 13263 bbls Treated Slick Water, 95990 lbs Common White - 100 Mesh proppant, 404970 lbs Premium White - 40/70 proppant. Max rate of 90.9 bpm, average rate of 89.2 bpm with max pressure of 8037 psi and average pressure of 6741 psi.
Interval 14 4/23/2018	(14359-14208): With 13574 bbls Treated Slick Water, 101400 lbs Common White - 100 Mesh proppant, 399130 lbs Premium White - 40/70 proppant. Max rate of 91.9 bpm, average rate of 89.7 bpm with max pressure of 7954 psi and average pressure of 6718 psi.
Interval 15 4/23/2018	(14156-14008): With 12832 bbls Treated Slick Water, 99888 lbs Common White - 100 Mesh proppant, 401290 lbs Premium White - 40/70 proppant. Max rate of 90.5 bpm, average rate of 90.1 bpm with max pressure of 7863 psi and average pressure of 7138 psi.
Interval 16 4/23/2018	(13958-13808): With 13168 bbls Treated Slick Water, 100518 lbs Common White - 100 Mesh proppant, 400000 lbs Premium White - 40/70 proppant. Max rate of 91.5 bpm, average rate of 86.3 bpm with max pressure of 7750 psi and average pressure of 6868 psi.



NEBU 604 COM 2H  
Completion Frac Report

Interval 17 4/23/2018	(13758-13607): With 1000 gal 15% HCL Acid, 13710 bbls Treated Slick Water, 100371 lbs Common White - 100 Mesh proppant, 399720 lbs Premium White - 40/70 proppant. Max rate of 90.0 bpm, average rate of 89.1 bpm with max pressure of 7849 psi and average pressure of 6574 psi.
Interval 18 4/24/2018	(13557-13407): With 1000 gal 15% HCL Acid, 14583 bbls Treated Slick Water, 99070 lbs Common White - 100 Mesh proppant, 397400 lbs Premium White - 40/70 proppant. Max rate of 91.7 bpm, average rate of 83.5 bpm with max pressure of 7829 psi and average pressure of 6982 psi.
Interval 19 4/24/2018	(13357-13206): With 1000 gal 15% HCL Acid, 114451 bbls Treated Slick Water, 103063 lbs Common White - 100 Mesh proppant, 391527 lbs Premium White - 40/70 proppant. Max rate of 90.2 bpm, average rate of 86.2 bpm with max pressure of 8916 psi and average pressure of 6876 psi.
Interval 20 4/25/2018	(13156-13006): With 1000 gal 15% HCL Acid, 13209 bbls Treated Slick Water, 96778 lbs Common White - 100 Mesh proppant, 410046 lbs Premium White - 40/70 proppant. Max rate of 90.8 bpm, average rate of 89.9 bpm with max pressure of 7067 psi and average pressure of 6341 psi.
Interval 21 4/25/2018	(12956-12806): With 1000 gal 15% HCL Acid, 12764 bbls Treated Slick Water, 100373 lbs Common White - 100 Mesh proppant, 402934 lbs Premium White - 40/70 proppant. Max rate of 90.7 bpm, average rate of 89.8 bpm with max pressure of 6869 psi and average pressure of 6428 psi.
Interval 22 4/26/2018	(12756-12605): With 1000 gal 15% HCL Acid, 13051 bbls Treated Slick Water, 93710 lbs Common White - 100 Mesh proppant, 401520 lbs Premium White - 40/70 proppant. Max rate of 93.8 bpm, average rate of 90.7 bpm with max pressure of 6922 psi and average pressure of 6264 psi.
Interval 23 4/26/2018	(12555-12405): With 1000 gal 15% HCL Acid, 14275 bbls Treated Slick Water, 100910 lbs Common White - 100 Mesh proppant, 397000 lbs Premium White - 40/70 proppant. Max rate of 95.5 bpm, average rate of 90.6 bpm with max pressure of 7903 psi and average pressure of 6385 psi.
Interval 24 4/27/2018	(12355-12204): With 500 gal 15% HCL Acid, 12681 bbls Treated Slick Water, 97706 lbs Common White - 100 Mesh proppant, 401619 lbs Premium White - 40/70 proppant. Max rate of 91.2 bpm, average rate of 90.1 bpm with max pressure of 7492 psi and average pressure of 6263 psi.
Interval 25 4/28/2018	(12154-12002): With 500 gal 15% HCL Acid, 12875 bbls Treated Slick Water, 98190 lbs Common White - 100 Mesh proppant, 402064 lbs Premium White - 40/70 proppant. Max rate of 90.7 bpm, average rate of 89.6 bpm with max pressure of 6712 psi and average pressure of 6163 psi.
Interval 26 4/28/2018	(11954-11804): With 100 gal 15% HCL Acid, 11134 bbls Treated Slick Water, 97034 lbs Common White - 100 Mesh proppant, 401863 lbs Premium White - 40/70 proppant. Max rate of 90.5 bpm, average rate of 89.9 bpm with max pressure of 6623 psi and average pressure of 6060 psi.
Interval 27 4/29/2018	(11754-11603): With 1000 gal 15% HCL Acid, 12522 bbls Treated Slick Water, 94801 lbs Common White - 100 Mesh proppant, 405123 lbs Premium White - 40/70 proppant. Max rate of 92.6 bpm, average rate of 91.3 bpm with max pressure of 7214 psi and average pressure of 6252 psi.
Interval 28 4/29/2018	(11553-11407): With 1000 gal 15% HCL Acid, 12976 bbls Treated Slick Water, 98985 lbs Common White - 100 Mesh proppant, 402015 lbs Premium White - 40/70 proppant. Max rate of 90.4 bpm, average rate of 89.6 bpm with max pressure of 7528 psi and average pressure of 6054 psi.
Interval 29 4/30/2018	(11353-11202): With 1000 gal 15% HCL Acid, 12632 bbls Treated Slick Water, 101242 lbs Common White - 100 Mesh proppant, 400669 lbs Premium White - 40/70 proppant. Max rate of 92.6 bpm, average rate of 90.1 bpm with max pressure of 6025 psi and average pressure of 5709 psi.
Interval 30 4/30/2018	(11150-11002): With 1000 gal 15% HCL Acid, 12634 bbls Treated Slick Water, 97581 lbs Common White - 100 Mesh proppant, 399360 lbs Premium White - 40/70 proppant. Max rate of 90.5 bpm, average rate of 89.6 bpm with max pressure of 7766 psi and average pressure of 6576 psi.
Interval 31 5/1/2018	(10952-10802): With 1000 gal 15% HCL Acid, 12220 bbls Treated Slick Water, 103253 lbs Common White - 100 Mesh proppant, 399018 lbs Premium White - 40/70 proppant. Max rate of 91.4 bpm, average rate of 90.1 bpm with max pressure of 8729 psi and average pressure of 6135 psi.
Interval 32 5/1/2018	(10752-10601): With 1000 gal 15% HCL Acid, 13574 bbls Treated Slick Water, 101912 lbs Common White - 100 Mesh proppant, 402630 lbs Premium White - 40/70 proppant. Max rate of 92.6 bpm, average rate of 90.2 bpm with max pressure of 7360 psi and average pressure of 6221 psi.



NEBU 604 COM 2H  
Completion Frac Report

Interval 33 5/2/2018	(10551-10404):	With 1000 gal 15% HCL Acid, 1247 bbls Treated Slick Water, 98737 lbs Common White - 100 Mesh proppant, 417508 lbs Premium White - 40/70 proppant. Max rate of 91.5 bpm, average rate of 90.9 bpm with max pressure of 7499 psi and average pressure of 6336 psi.
Interval 34 5/3/2018	(10351-10200):	With 1000 gal 15% HCL Acid, 12009 bbls Treated Slick Water, 101585 lbs Common White - 100 Mesh proppant, 373956 lbs Premium White - 40/70 proppant. Max rate of 90.5 bpm, average rate of 89.4 bpm with max pressure of 7998 psi and average pressure of 6741 psi.
Interval 35 5/3/2018	(10148-10000):	With 1000 gal 15% HCL Acid, 11573 bbls Treated Slick Water, 79888 lbs Common White - 100 Mesh proppant, 399746 lbs Premium White - 40/70 proppant. Max rate of 90.6 bpm, average rate of 89.1 bpm with max pressure of 8100 psi and average pressure of 7277 psi.
Interval 36 5/4/2018	(9950-9800):	With 1000 gal 15% HCL Acid, 12123 bbls Treated Slick Water, 99581 lbs Common White - 100 Mesh proppant, 347708 lbs Premium White - 40/70 proppant. Max rate of 90.8 bpm, average rate of 90.0 bpm with max pressure of 7970 psi and average pressure of 6276 psi.
Interval 37 5/4/2018	(9750-9599):	With 1000 gal 15% HCL Acid, 11791 bbls Treated Slick Water, 99488 lbs Common White - 100 Mesh proppant, 406200 lbs Premium White - 40/70 proppant. Max rate of 92.5 bpm, average rate of 89.9 bpm with max pressure of 7101 psi and average pressure of 6600 psi.
Interval 38 5/5/2018	(9549-9399):	With 1000 gal 15% HCL Acid, 12502 bbls Treated Slick Water, 97108 lbs Common White - 100 Mesh proppant, 403517 lbs Premium White - 40/70 proppant. Max rate of 91 bpm, average rate of 90 bpm with max pressure of 8388 psi and average pressure of 6857 psi.
Interval 39 5/5/2018	(9349-9198):	With 1000 gal 15% HCL Acid, 13174 bbls Treated Slick Water, 100920 lbs Common White - 100 Mesh proppant, 399283 lbs Premium White - 40/70 proppant. Max rate of 92 bpm, average rate of 91 bpm with max pressure of 8756 psi and average pressure of 6796 psi.
Interval 40 5/6/2018	(9152-8999):	With 1000 gal 15% HCL Acid, 13335 bbls Treated Slick Water, 102000 lbs Common White - 100 Mesh proppant, 361410 lbs Premium White - 40/70 proppant. Max rate of 93 bpm, average rate of 89 bpm with max pressure of 8111 psi and average pressure of 6433 psi.
Interval 41 5/6/2018	(8948-8799):	With 1000 gal 15% HCL Acid, 11826 bbls Treated Slick Water, 101098 lbs Common White - 100 Mesh proppant, 403695 lbs Premium White - 40/70 proppant. Max rate of 93 bpm, average rate of 91 bpm with max pressure of 7834 psi and average pressure of 6249 psi.
Interval 42 5/6/2018	(8748-8598):	With 1000 gal 15% HCL Acid, 12225 bbls Treated Slick Water, 101316 lbs Common White - 100 Mesh proppant, 397950 lbs Premium White - 40/70 proppant. Max rate of 90 bpm, average rate of 89 bpm with max pressure of 8505 psi and average pressure of 6693 psi.
Interval 43 5/7/2018	(8547-8398):	With 1000 gal 15% HCL Acid, 13026 bbls Treated Slick Water, 99192 lbs Common White - 100 Mesh proppant, 400820 lbs Premium White - 40/70 proppant. Max rate of 90 bpm, average rate of 84 bpm with max pressure of 8004 psi and average pressure of 6717 psi.
Interval 44 5/7/2018	(8347-8197):	With 1000 gal 15% HCL Acid, 10913 bbls Treated Slick Water, 100139 lbs Common White - 100 Mesh proppant, 400502 lbs Premium White - 40/70 proppant. Max rate of 91 bpm, average rate of 90 bpm with max pressure of 8260 psi and average pressure of 6375 psi.
Interval 45 5/7/2018	(8146-7997):	With 1000 gal 15% HCL Acid, 11996 bbls Treated Slick Water, 98169 lbs Common White - 100 Mesh proppant, 399640 lbs Premium White - 40/70 proppant. Max rate of 90 bpm, average rate of 90 bpm with max pressure of 7365 psi and average pressure of 6000 psi.
Interval 46 5/8/2018	(7946-7797):	With 1000 gal 15% HCL Acid, 12551 bbls Treated Slick Water, 100487 lbs Common White - 100 Mesh proppant, 398621 lbs Premium White - 40/70 proppant. Max rate of 90 bpm, average rate of 89 bpm with max pressure of 6816 psi and average pressure of 6348psi.
Interval 47 5/8/2018	(7746-7594):	With 1000 gal 15% HCL Acid, 11766 bbls Treated Slick Water, 99877 lbs Common White - 100 Mesh proppant, 400171 lbs Premium White - 40/70 proppant. Max rate of 90.3 bpm, average rate of 89.7 bpm with max pressure of 7711 psi and average pressure of 5937 psi.
Interval 48 5/8/2018	(7545-7397):	With 1000 gal 15% HCL Acid, 12120 bbls Treated Slick Water, 96931 lbs Common White - 100 Mesh proppant, 405070 lbs Premium White - 40/70 proppant. Max rate of 91 bpm, average rate of 90 bpm with max pressure of 6803 psi and average pressure of 5920 psi.