

Submit 1 Copy To Appropriate District Office
District I - (575) 393-6161
1625 N. French Dr., Hobbs, NM 88240
District II - (575) 748-1283
811 S. First St., Artesia, NM 88210
District III - (505) 334-6178
1000 Rio Brazos Rd., Aztec, NM 87410
District IV - (505) 476-3460
1220 S. St. Francis Dr., Santa Fe, NM 87505

State of New Mexico
Energy, Minerals and Natural Resources

Form C-103
Revised July 18, 2013

OIL CONSERVATION DIVISION
1220 South St. Francis Dr.
Santa Fe, NM 87505

WELL API NO. 30-045-34234
5. Indicate Type of Lease STATE <input type="checkbox"/> FEE <input checked="" type="checkbox"/>
6. State Oil & Gas Lease No.
7. Lease Name or Unit Agreement Name Redfern
8. Well Number 5
9. OGRID Number 372286
10. Pool name or Wildcat Basin Fruitland Coal
11. Elevation (Show whether DR, RKB, RT, GR, etc.) 5330'

SUNDRY NOTICES AND REPORTS ON WELLS
(DO NOT USE THIS FORM FOR PROPOSALS TO DRILL OR TO DEEPEN OR PLUG BACK TO A DIFFERENT RESERVOIR. USE "APPLICATION FOR PERMIT" (FORM C-101) FOR SUCH PROPOSALS.)

1. Type of Well: Oil Well ☐ Gas Well ☒ Other

2. Name of Operator **Enduring Resources IV LLC**

3. Address of Operator
200 Energy Court Farmington, NM 87401

4. Well Location
Unit Letter **E** : **2119** feet from the **N** line and **522** feet from the **W** line
Section **14** Township **29N** Range **13W** NMPM County **San Juan**

12. Check Appropriate Box to Indicate Nature of Notice, Report or Other Data

NOTICE OF INTENTION TO:

PERFORM REMEDIAL WORK ☐ PLUG AND ABANDON ☐
TEMPORARILY ABANDON ☐ CHANGE PLANS ☐
PULL OR ALTER CASING ☐ MULTIPLE COMPL ☐
DOWNHOLE COMMINGLE ☐
CLOSED-LOOP SYSTEM ☐
OTHER: ☐

SUBSEQUENT REPORT OF:

REMEDIAL WORK ☐ ALTERING CASING ☐
COMMENCE DRILLING OPNS. ☐ P AND A ☒
CASING/CEMENT JOB ☐
OTHER: ☐

13. Describe proposed or completed operations. (Clearly state all pertinent details, and give pertinent dates, including estimated date of starting any proposed work). SEE RULE 19.15.7.14 NMAC. For Multiple Completions: Attach wellbore diagram of proposed completion or recompletion.

This well has been plugged and abandoned 2/8/19

2/5/19 - MIRU. Check PSI on Well, 2 3/8" tbg-10 PSI, 7" csg-18 PSI, BH-45 PSI. Open well, blow down ND WH, NU BOP. Pull tbg hangar. TOOH and LD 40 jts.
2/6/19 - PU and tally workstring to 1369'. RIH, find fluid level @1200'.
Plug 1: PC top, M&P 40 sx class G cmt from 1378' to 1170' TOC. W/2% calc. TIH, tag plug #1 @1233', tag good, TOOH, PU 7" Cmt Retainer, TIH to 1141', set CR, release Load and est circ w 45bbl, pumped 50 bbl total.
Plug 2: Fruitland Top. M&P 55 sx class G cmt from 1141' to 855' TOC. SDFD.
2/7/19 - Check PSI on well. 7" csg 0 PSI, BH 25 PSI. WOO from Monica Kuehling of OCD. OCD requested gas samples and CBL. Took gas samples, turned in to Gas Analysis. Run CBL from 800' to surface. Good cement 800' to 50' TOC. WOO from OCD. OCD request to perf @ 320'. RIH 3-1/8" HSC to 320'. Perf 4 holes. POOH. RU pump to csg, got rate of 0.5 BPM @ 1200 PSI. RD WL. TIH w/ CR to 295', set, release and sting in, RU pump to tbg, got rate of 0.5 BPM @ 1200 PSI.
Plug 3: Kirtland Top - M&P 20 sx class G cmt from 320' to 295' TOC, w/15 sx in annulus, 5 sx below CR. RU pump to csg, reverse circulate w/ 5 BBL. SDFD.
2/8/19 - Check PSI on well. 7" csg - 0 psi. Unable to read open BH - slight blow. WOO from Monica Kuehling of OCD, approved continue to pump surface.
Plug 3A: Surface. M&P 65 sx class G cmt from 295' to surface until good cmt returns. LD remaining tbg. ND BOP. RU welder. Cut off WH. TOC in annulus @ 50', TOC in 7" @ 20'. M&P 16 sx to fill top of well. Weld on DHM. RDMO.

Spud Date: 03/12/2008

Rig Release Date:

I hereby certify that the information above is true and complete to the best of my knowledge and belief.

SIGNATURE April E Pohl TITLE Regulatory Specialist DATE 2/12/2019
Type or print name April E Pohl E-mail address: apohl@enduringresources.com PHONE: 505-636-9722

For State Use Only

APPROVED BY: Monica Kuehling TITLE Deputy Oil & Gas Inspector, DATE 2.22.16
Conditions of Approval (if any): AY PNR only

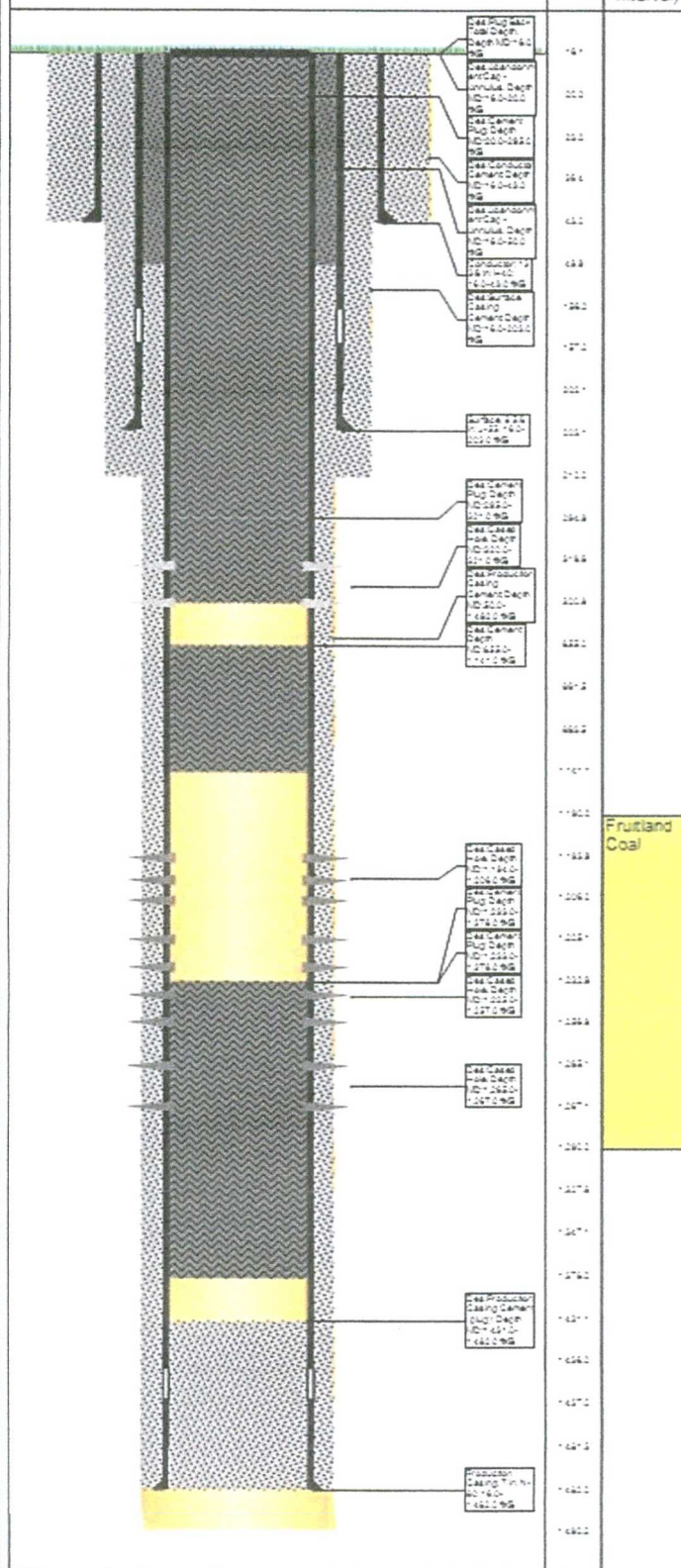
Approved for plugging of wellbore only.
Liability under bond is retained pending
Receipt of C-103 (Subsequent Report of Well
Plugging) which may be found @ OCD web
page under forms
www.emnrd.state.us/ocd

Well Name: Redfern 05

API/Well 3004534234	State/Province New Mexico	County San Juan	Surface Legal Location Sec 14, Twp 29N, Rng 13W
Spud Date 3/12/2008	On Production Date 4/19/2008	Abandon Date 2/8/2019	Original KS Elevation (ft) 5,346.00
			Ground Elevation (ft) 5,330.00
			Total Depth (ft) Original Hole - 1,490.0
			PSTD (ft) Original Hole - 16.0

Land, Original Hole, 2/12/2019 5:52:54 AM

Vertical schematic (actual)

MD
(ft/KB)Zone
(Contact
Interval)

Casing Strings

Csg Des	OD (in)	WT (lb/ft)	Grade	Top (ft/KB)	Set Depth (ft/KB)
Conductor	13 3/8	48.00	H40	16.0	43.0
Surface	9 5/8	36.00	J-55	16.0	203.0
Production Casing	7	23.00	N-80	16.0	1,482.0

Cement

Description	Comment
Conductor Cement	PJSM W/ HES CEMENTERS. R/U CEMENTERS & PUMP 125 SKS (27 BBL) OF TYPE 5 CEMENT W/ 3% CACL2 AND 1/4#BBL CELLOFLAKE AT 15.5 PPG WITH 1.19 YIELD & 150 SKS (31 BBL) OF TYPE 5 CEMENT 1/4#BBL CELLOFLAKE AT 15.5 PPG WITH 1.19 YIELD. 8 BBL CLEAN CMT TO SURFACE. GOOD RETURNS TO SURFACE AND FLUID LEVEL HOLDING AT SURFACE. CEMENT IN PLACE @ 17:00 HRS. NOTE: WOC TIME EFFECTED DUE TO NO CACL2 IN LAST 150 SX.
Surface Casing Cement	PJSM WITH HES CEMENTERS & R/U SAME. TEST LINES TO 1500 PSI. PUMP 20 BBL FRESH WATER AHEAD OF CEMENT. PUMP 25 BBL (125 SX) OF PREMIUM CLASS G CEMENT (1% CACL2 + 1/8# FLAKE) @ 15.6 PPG WITH 1.2 YIELD. DROP TOP PLUG & DISPLACE WITH 13 BBL OF FRESH WATER. DID NOT BUMP PLUG. BLEED BACK AND FLOATS HELD. FULL RETURNS DURING JOB WITH 10 BBL (50 SX) OF CLEAN CEMENT TO SURFACE. CIP @ 10:00 HRS. R/D HES CEMENTERS.
Production Casing Cement	PRESSURE TEST LINES TO 2500 PSI. PUMP 10 BBL WATER - 20 BBL CHEM WASH - 10 BBL WATER AHEAD OF CEMENT. PUMP 245 SX (61.5 BBL) TAIL CMT - 50/50 POZ @ 13.1 PPG W/ 1.39 YIELD. DISPLACE WITH 57 BBL FRESH WATER. DID NOT BUMP PLUG. BLEED BACK AND FLOATS HELD. FULL RETURNS DURING JOB WITH 8 BBL (32 SX) CLEAN CEMENT TO SURFACE. CIP @ 1:00 HRS ON 3/21/08. R/D HES CEMENTERS.
Abandonment Plug #1	Plug #1 - 40 sx class G from 1378' to 1170'.
Abandonment Plug #2	Plug #2 - 55 sx class G from 1141' to 855'.
Abandonment Plug #3	Plug #3 - 20 sx class G from 295' to 320' (15 sx in annulus and 5 sx below cement retainer)
Abandonment Plug #4	Plug #3A - M&P 65 sx class G cmt from 295' to surface until good cmt returns.
Abandonment Cap - Annulus	M&P 16 sx to fill top of well.
Abandonment Cap - Plug	M&P 16 sx to fill top of well.

Tubing Strings

Tubing Description	Run Date	String Length (ft)	Set Depth (ft/KB)
Jts	Item Des	OD (in)	Len (ft)
		Top (ft/KB)	Strm (ft/KB)
		Grade	WT (lb/ft)

Rod Strings

Rod Description	Run Date	String Length (ft)	Set Depth (ft/KB)
Jts	Item Des	OD (in)	Len (ft)
		Top (ft/KB)	Strm (ft/KB)

Other Strings

String Description	Run Date	String Length (ft)	Set Depth (ft/KB)
--------------------	----------	--------------------	-------------------

Perforations

Date	Top (ft/KB)	Strm (ft/KB)	Shot Dens (shots/ft)	Nom Hole Dia (in)
2/7/2019	320.0	321.0	4.0	
4/3/2008	1,194.0	1,206.0	4.0	0.420