

UNITED STATES
DEPARTMENT OF THE INTERIOR
BUREAU OF LAND MANAGEMENT
Farmington Field Office
Bureau of Land Management

RECEIVED

JUN 17 2019

FORM APPROVED
OMB No. 1004-0137
Expires: July 31, 2010

5. Lease Serial No.

NMSF080469

6. If Indian, Allottee or Tribe Name

SUNDRY NOTICES AND REPORTS ON WELLS
Do not use this form for proposals to drill or to re-enter an abandoned well. Use Form 3160-3 (APD) for such proposals.

SUBMIT IN TRIPLICATE - Other instructions on page 2.

1. Type of Well

☐ Oil Well

☒ Gas Well

☐ Other

2. Name of Operator

Hilcorp Energy Company

3a. Address

382 Road 3100, Aztec, NM 87410

3b. Phone No. (include area code)

505-599-3400

7. If Unit of CA/Agreement, Name and/or No.

8. Well Name and No.

Federal E Com 1

9. API Well No.

30-045-08759

4. Location of Well (Footage, Sec., T., R., M., or Survey Description)

Surface Unit E (SWNW) 1850' FNL & 1190' FWL, Sec. 2, T29N, R11W

10. Field and Pool or Exploratory Area

Blanco Mesaverde / Basin Dakota

11. Country or Parish, State

San Juan, New Mexico

12. CHECK THE APPROPRIATE BOX(ES) TO INDICATE NATURE OF NOTICE, REPORT OR OTHER DATA

TYPE OF SUBMISSION	TYPE OF ACTION			
<input type="checkbox"/> Notice of Intent	<input type="checkbox"/> Acidize	<input type="checkbox"/> Deepen	<input type="checkbox"/> Production (Start/Resume)	<input type="checkbox"/> Water Shut-Off
<input checked="" type="checkbox"/> Subsequent Report	<input type="checkbox"/> Alter Casing	<input type="checkbox"/> Fracture Treat	<input type="checkbox"/> Reclamation	<input type="checkbox"/> Well Integrity
<input type="checkbox"/> Final Abandonment Notice	<input type="checkbox"/> Casing Repair	<input type="checkbox"/> New Construction	<input checked="" type="checkbox"/> Recomplete	<input type="checkbox"/> Other
	<input type="checkbox"/> Change Plans	<input type="checkbox"/> Plug and Abandon	<input type="checkbox"/> Temporarily Abandon	
	<input type="checkbox"/> Convert to Injection	<input type="checkbox"/> Plug Back	<input type="checkbox"/> Water Disposal	

13. Describe Proposed or Completed Operation: Clearly state all pertinent details, including estimated starting date of any proposed work and approximate duration thereof. If the proposal is to deepen directionally or recompleat horizontally, give subsurface locations and measured and true vertical depths of all pertinent markers and zones. Attach the bond under which the work will be performed or provide the Bond No. on file with BLM/BIA. Required subsequent reports must be filed within 30 days following completion of the involved operations. If the operation results in a multiple completion or recompleat in a new interval, a Form 3160-4 must be filed once Testing has been completed. Final Abandonment Notices must be filed only after all requirements, including reclamation, have been completed and the operator has determined that the site is ready for final inspection.)

4/19/19 BH: 0, SITP:170 psi, SICP:170 psi. BDW to tnk, MIRU, NDtbg, NU BOPE. PT BOPE to 1500# f/10 min w/ no lk off. Pull tbg hgr, tag fill @ 6592. Scan tbg. TIH w/ bit & csg scraper for 4.5" csg to 6453'. TOO H, SISW, SDFD.

4/22/19 BH: 0, SICP:270 psi, BD to tk. TIH & set 4.5" CIBP @ 6420'. Circ hole w/ FW treated w/ biocide. SI pipe rams & kill spool valves, pump down tbg & PT csg to 560#, had 360# loss in 5 min, bleed off pressure, pull & inspect pipe rams. Retest csg w/ same results. TOO H w/ tbg & setting tool. Load csg, set tension pkr @ 30', PT annulus to 600#, had 260# loss in 3 min. PT csg below pkr had 200# loss in 2 min, set pkr @ 10' from surface & retest w/ same results. TIH w/ tension pkr & attempt to isolate btm of leak, set pkr @ 2112' & PT dwn tbg to 560# had 240# loss in 3 min. Move pkr to 3978' & PT below pkr w/ same results, move pkr to 6395' & PT down tbg & had same results, no signs of communication to BH. TOO H w/ pkr, SIW, break out 3" ball valve on kill spool, SDFD.

NMOCD

JUN 20 2019

14. I hereby certify that the foregoing is true and correct. Name (Printed/Typed)

Christine Brock

Title **Operations/Regulatory Technician - Sr.**

Signature

Christine Brock

Date

6/17/19

ACCEPTED FOR RECORD

THIS SPACE FOR FEDERAL OR STATE OFFICE USE

Approved by

Title

FARMINGTON FIELD OFFICE

Office

Conditions of approval, if any, are attached. Approval of this notice does not warrant or certify that the applicant holds legal or equitable title to those rights in the subject lease which would entitle the applicant to conduct operations thereon.

Title 18 U.S.C. Section 1001 and Title 43 U.S.C. Section 1212, make it a crime for any person knowingly and willfully to make to any department or agency of the United States any false, fictitious or fraudulent statements or representations as to any matter within its jurisdiction.

NMOCD

4/23/19 BH: 0#, SICP: 0#. MU full bore tension pkr w/ 4' pup & new SN, set prk @ 10', SI pipe rams & PT annulus above pkr to 500#, had 220# loss in 3 min, set pkr @ 60', PT annulus & had same lk off. PT dwn tbg to 600#, SIW valve at tbg to isolate f/ rig pump, bleed off hose & remove hose, no visual lk coming out of valve (had 300# loss in 3 min). TOOH, run AS1-X pkr, set @ 10' & PT annulus w/ same results, set pkr @ 60' & PT tbg w/ same results. Drop standing SV & PT tbg to 1000#, 200# loss in 30 seconds & cont to drop. Performed PT again w/ same results, new SV delivered to location & installed in SN, performed PT on tbg & had same lk off, swapped out SN & SV, replaced 2" valve on pumping T, PT tbg to 1000# w/ no lk off. Set full bore tension pkr @ 30' PT down tbg to 540# (180# loss in 6 min, 240# loss in 20 min). PT annulus to 600# (200# loss in 1 min), install 2nd set of new ram rubbers & PT annulus to 540# (240# loss in 20 min), TOOH w/ pkr, SI blind rams, PT 4.5" csg to 540# (180# loss in 15 min). ND BOPE & kill spool. PT blind & pipe rams 250# f/5 min (low), 2000# f/10 min (high), test good. Set pkr @ 30'. PT csg above pkr to 680# & record on chart, had 420# loss in 4 min. Wellcheck used hand pump & attempted to PT secondary seals, unable to pressure up on secondary seals. PT csg below pkr to CIBP @ 6420' to 430# & record on chart, 160# loss in 15 min. TOOH w/ pkr, SISW, SDFD.

4/24/19 BH: 0#, SICP: 0#. ND BOPE, Dig out around WH, ND tbg head. Pull ID seal on hgr bushing & ID. Pack void on top of csg slips w/ desco pkg, install new ID seal in hgr bushing, NU tbg head, PT on void failed. ND tbg head. NU tbg head, PT void to 1500# f/5 min w/ no lk off, NU BOPE. PT BOPE t/1200# f/10 min w/ no lk off. Set Full bore tension pkr @ 30', PT 4.5" csg & tbg head to 700# f/5 min w/ no lk off, PT csg below pkr to CIBP @ 6420' to 560# had 220# loss in 10 min. TIH w/ pkr to isolate csg lk, set prk @ 4728', test annulus t/ 600#, 200# loss in 5 min. Test down tbg to 630#, 0 loss in 5 min. Set pkr @ 3482', Test annulus to 650# f/ 5 min, 0 loss. Set prk @ 4104', test annulus to 650#, 75# loss in 5 min. Test dwn tbg to 600#, 200# loss for 5 min, set pkr @ 4665', test tbg to 500#, 100# loss in 5 min, Test annulus to 520#, 120# loss in 5 min, set pkr @ 4042', test annulus to 500#, 120# loss in 5 min. Csg tested good surface to 3482', 4728'-6420'. Rel pkr, SISW, SDFD.

4/25/19 BH: 0#, SICP: 0#, SITP: 0#. Isolate csg lk w/ pkr. Csg tested good 3606' to surface. TOOH w/ pkr, TIH w/ plug & pkr to isolate csg lk, Surface to 3606' csg tested good, 3606'-3639' isolated lk (200# 3 min), 3639'-4173' csg tst good, 4173'-4291' isolated lk (70# 5 min), 4291'-4332' csg tst good, 4635'-4728' isolated lk (110# 5 min), 4728'-6420' (CIBP) csg tst good. Retrieve RBP, TOOH w/ pkr & plug load csg to surface, SISW, SDFD. **Reported leaks to BLM (Troy Salyers) & NMOCD (Brandon Powell), rcv'd approval to move legal MV top, adjust NOI depths to 3447'-4843 and permit leaks in csg @ 3606' & 4728' as perforation on the MV.**

4/26/19 BH: 0#, SICP: 0#. RU WRLN, Log interval 6420'-surface. **Rcv'd verbal approval from BLM (Troy Salyers) & NMOCD (Brandon Powell) sqz.** TIH & WLS CIBP @ 5011'. POOH. TIH & perf 2 sqz holes @ 4950' & 2 sqz holes @ 4750' w/ 3-1/8" sfg, .41 EH, 11 grm chg, 19" penetrations. POOH, SISW, SDFD.

4/27/2019 BH: 0#, SICP: 0#. TIH w/ full bore tension pkr & set @ 4785' (between sqz holes @ 4950' & 4750'). Est IR dwn tbg out sqz holes @ 4950', Ret's back in sqz holes @ 4750' to surface, 1.2 BPM @ 100#, circ til clean pumped 90 bbls wtr. Rel pkr & TOOH. TIH & set 4.5" cmt retainer @ 4805', RU DES. **Sqz, 150 sx G Neat cmt (30 bbls) @ 15.8 ppg, 1.16 yld, 4.8 gals/sx mix wtr, 3 bbls FW, 30 bbls cmt, 1.5 BPM @ 260#, St displ 1.5 BPM @ 75#, 9 bbl gone lost ret's, slow rate 1 BP<, 110 bbls one press increase to 800#, Final disp 17 bbls, final pressure 800#, ISDP-600#, Sting out of retainer leaving 180' cmt on top. PU to 3731' & Rev circ w/ 16 bbls, no cmt to surface, Cont TOOH. RU WRLN. RIH & set 4.5" CBP@3618', POOH, RIH & perf 2 sqz holes @ 3600' & 2 sqz holes @ 3400', POOH, RD WRLN. TIH & set pkr in between perfs (3400' & 3600') @ 3482'. Est circ dwn tbg out sqz holes @ 3600' & back in sqz holes @ 3400', 1 BPM @ 1000#, had ret's then stopped, swap valves & rev circ, had ret's then stopped, cont sapping circ methods til able to get & maintain circ, once circ back 1.5 BPM @ 600#, Circ 100 bbls, SD, rel pkr # PU to 3296', SISW, SDFD.**

4/28/19 BH: 0#, SICP: 380#, SITP: 270#. Blew right down, set pkr @ 3482' between sqz perfs 3400' & 3600', Est circ w/ rig pump dwn tbg & out sqz holes @ 3600' & back in sqz holes @ 3400' inside 4.5" csg to surface 2 BPM @ 500#, Pump total of 105 bbls, full ret's to out csg valve to FB tank. Rel pkr & TOOH. TIH & set cmt retainers @ 3554' between sqz hole @ 3400' & 3600'. PT tbg to 1000#, rel setting tool. RU DES, est circ dwn tbg & out holes @ 3600'. Taking ret's back in holes @ 3400', pump 5 bbls FW ahead 1.5 BPM @ 260#, **pump 150 sx G neat cmt (30 bbl) @ 15.8 ppg, 1.14 yield**, IR 1.5 BPM @ 260#, displace w/ wtr, 1.5 BPM @ 75#, 8 bbl, 8 bbl into displ TP 350#, 12 bbl displ TP=700#, SD, ISDP = 400#, Sting out of retainer, TP=400#, Bleed tbg dn slow, 2 bbls wtr back. 130 sxs G neat cmt, 1.14 yield, 4.9 gal/ mix wtr. PU to 3109', Rev circ w/ 18 bbls wtr, no cmt to surface. TOOH w/ setting tool, SIW, SDFD, will WOC.

5/1/19 BH: 0#, SICP: 0 #. TIH w/ 3-7/8" bit. Tag @ 2138'. TOOH. MU 3-7/8" cone bit, PU 3-1/8" DC's & TIH. X-0 to tbg & cont TIH w/ BHA to 2108'. RU PS. DO cmt 2138'-2784', circ hole clean, hang back PS, LD 4 jts, bit @ 2659'. SISW, SDFD.

5/2/19 BH: 0#, SICP: 0#, SITP: 0#. LD 36 jts, TIH w/ 20 stands, RU PS. Rev circ 1.8 BPM @ 400#, DO cmt 2784'-3468'. Circ cutting outs. RD PS. PT sqz holes @ 3400' to 630#, had 35# loss in 15 min, bleed off pressure. LD 4 jts, bit @ 3344'. SISW, SDFD.

5/3/19 BH: 0#, SICP: 0#, SITP: 0#. TOOH w/ bit. TIH w/ 3-7/8" junk mill to 3465'. Circ out cmt colored wtr using clean FW. PT 4.5" csg & sqz holes @ 3400' to 595# & record on chart f/ 30 min w/ no lk off. Circ 1.8 BPM @ 400#, DO cmt 3468'-3554', DO cmt retainer 3554'-3556'. Circ hole clean, PU to 3564'. SISW, SDFD.

5/4/19 BH: 0#, SICP: 0#, SITP: 0#. Circ 1.8 BPM @ 500#, DO cmt 3595'-3618', DO CBP 3618'-3620. Circ bottoms up. Swivel in singles to 4029'. Tag @ 4518'. Circ 1.8 BPM @ 500#, DO cmt 4518'-4745', circ bottoms up. RD PS, LD 12 jts, SISW, SDFD.

5/5/19 BH: 0#, SICP: 0#, SITP: 0#. Run 6 stands in hole, RU PS. Circ 1.8 BPM @ 500#, DO cmt 4745'-4805', DO cmt retainer 4805'-4807', DO cmt 4807'-4964' & fell out of cmt, Drill stinger & circ down to CIBP @ 5011'.

5/6/19 BH: 0#, SICP: 0#, SITP: 0 #. Circ hole w/ clean FW treated w/ biocide. TOOH w/ junk mill. TIH w/ tension pkr & set @ 4914'. PT sqz holes @ 4950' to 560#, had 100# loss in 5 min. Set pkr below sqz holes & PT CIBP @ 5011' to 560# w/ no lk off in 5 min, move pkr above sqz holes & set @ 4914, Retest sqz holes 560# w/ 100# loss in 5 min. TOH w/ pkr, pkr set on TOOH, Rel pkr cont TOOH, pkr had broken slip. RU WRLN. Log interval 5011'-3000' w/ no pressure. Log same interval while maintaining 500# w/ rig pump. SISW, SDFD.
Requested approval from BLM (Jim Lovato) & NMOCD (Brandon Powell) to sqz @ 4950' and count top leak @ 3606' and bottom leak @ 4728' as perforation within the legal MV, rcv'd verbal approval on 5/7/19.

5/7/19 BH: 0#, SICP: 0#. TIH w/ pkr to 4976', spot 2.4 bbl 15% HCL 4826'-4976', PU to 4789' & set pkr. Attempt to BD sqz hole @ 4950' that had small lk off, pressure to 800# & SD, 200# loss in 3 min, pressure to 1000#, 800# loss in 4 min, Est IR 1.5 BPM @ 1200#, increase rate to 2 BPM @ 1225#, Pump 16 bbls wtr & SD, bleed pressure off tbg. Rel pkr & TOOH. TIH & set cmt retainer @ 4879'. RU cmt services. Est IR into sqz holes @ 4950' 1.5 BPM @ 1200#, Pump 10 bbls & SD. **Pump 50 sx G Neat cmt w/ fluid loss additive to 15.8 ppg (1.14 yield)**, sting out of retainer, spot 10 bbls cmt to EOT & sting back into retainer, displace cmt below retainer & out sqz holes @ 4950', 1 BPM @ 200#, 10 bbl displacement gone slow rate to .5 BPM @ 820#, 18.3 bbls displacement SD, Final pump pressure 1130#, ISDP=560#, Sting out of retainer. EOT 4848', rev circ 1 BPM @ 250#, circ 1 bbl cmt to surface. TOOH w/ setting tool, SISW, SDFD. WOC.

5/9/19 BH: 0#, SICP: 0#. MU 3-7/8" junk mill on bottom of 8 3-1/8" DC's. TIH w/ tbg. Tag cmt fill @ 4846'. PU PS & break circ w/ FW. MO med hard cmt fr 4846'-4879'. Cmt retainer f/ 4879'-4882' & med-hard cmt f/ 4882'-4950'. TIH & tag up @ 5000'. Circ hole clean @ 4995'. LD tbg & POOH w/ mill. PU & TIH w/ 4-1/2" pkr on tbg. Set pkr @ 4911'. Test & chart pressure dwn tbg testing csg f/ 4911'-5011' to 560 psi – 15 min. Held 555' SI last 10 min. Pull up & reset pkr @ 4820'. Test & chart pressure to 580 psi – 30 min. Held 575 psi last 15 min. Bleed off psi & unset pkr. SISW, SDFD.

5/10/19 BH: 0#, SICP: 0#. TIH f/ 4820' picking up 3 jts of tbg. Pull up standing back 1 stand, Latch up next jt & work tight tbg. Pkr stuck @ 4852'. Work stuck pkr. MU PS & break 1st safety on pkr. Cont working stuck pkr, prk @ 4888', break 2nd safety & free up pkr. LD 2 jts. Hand swivel & POOH w/ pkr remnants. Recovered bypass, upper body w/ slip cage & inner mandrel. RU sand line, make 4 sand line trips w/ 3-3/4" magnet on tbg jt. Recovered 1-1/2 slips & minimal metal trash. MU spear, bumper sub & jars on 3-1/8" DCs. TIH w/ fishing BHA on 2-3/8" to 4000'. SISW, SDFD.

5/11/19 BH: 0#, SICP: 0#, SITP: 0#. Cont in hole f/ 4000' w/ fishing assembly to 4888'. Spear bottom half of pkr body & work free. POOH slowly, recovered pkr body & half a slip die. PU & TIH w/ 3-1/2" magnet & 3-7/8" string mill on tbg to 5000' POOH w/ no recovery. MU & TIH w/ 4-1/2" pkr on tbg to 4820' & set. Chart & test csg from 4820'-CIPB @ 5011' for 30 min @ 560 psi. Tested 3 times, pressure dropped fr 560 psi to 540 psi in 20 min & an additional 5 psi last 10 min. Unset prk @ 4820'. Pull up & reset @ 3447'. Chart & Test csg fr 3447'-surface at 560 psi for 30 min, pressure dropped off 20 psi in 20 min & an additions 7 psi last 10 min. Unset pkr & POOH. SISW, SDFD.

5/12/19 BH: 0#, SICP: 0#. RU air pkg. Lay 3" flow line to FB tank. TIH w/ 3-7/8" 5 pt junk mill, 8 3-1/8" DHs on tbg unloading the csg every 20 stands to 4996'. PU PS & break circ w/ air/mist. CO cmt fill fr 4996'-5011'. MO CIBP @ 5011'. Circ hole clean @ 5025'. Hang swivel, cont in hole to CIBP @ 6420'. Pull up to 6396'. Load & roll hole clean fresh treated wtr. POOH w/ mill. SISW, SDFD.

5/13/19 BH: 0#, SICP: 0#. TIH w/ AS1-X pkr. Set pkr @ 4820' in tension. MIT sqz holes @ 4950' & 4.5" csg to CIBP @ 6420'. PT to 560#, had 200# loss in 2 min. Rel pkr, PU to 3451' & reset pkr. PT sqz holes @ 3400' & 4.5" csg to surface to 560#, 60# loss in 30 min. TIH w/ full bore tension pkr @ 3451', circ hole w/ 60 bbls FW. Set pkr @ 3451'. PT sqz holes @ 3400' to 560#, 100# loss in 30 min. Drop SV dwn tbg, waited 20 min. Unable to pressure up w/ rig pump, set pkr & pull 15K tension. Pump w/ rig pump still no pressure. Pull 1 stand, tbg full of wtr. PT tbg to 800# & record on char 15 min w/ no lk off. Retrieve SV. Set pkr @ 3451', PT sqz holes @ 3400' & 4.5" csg to surface to 560# had 60# loss in 30 min, bleed off & retest to 560# & had 25# loss in 30 min. Bleed off pressure, rel pkr. SISW, SDFD.

5/14/19 BH: 0#, SICP: 0#. Set pkr @ 3451'. PT sqz holes @ 3400' & 4.5 csg to surface to 560# & record on chart, had 30# loss in 30 min. Ran chart for 10 more min w/ 5# loss. **Reported MIT chart to BLM (Jim Lovato) & NMOCD (Brandon Powell), rcv'd verbal approval that MIT passed.** TIH w/ pkr to 4820', circ tbg volume w/ FW. Set pkr @ 4820'. PT sqz holes @ 4950' & 4.5" csg to CIBP @ 6420' to 560# & record on chart, had 200# loss in 3 min, 340# loss in 20 min. Rel pkr, TIH & set pkr @ 5007', PT csg 5007' - CIPB @ 6420' to 560# & record on chart, 0 loss in 25 min. Rel pkr & TOOH. TIH & set RBP @ 4910', TOOH w/ retrieving head. TIH w/ full bore tension pkr to 3293'. SISW, SDFD.

5/15/19 BH: 0#, SICP: 0#. pkr @ 4789', cont TIH. Set pkr @ 4789'. PT 4.5" csg 4789'- RBP @ 4910' to 650# for 15 min w/ no lk off, good test. Rel pkr & TOOH, pkr had broke slip. TIH w/ retrieving head, latch RBP @ 4910' & rel w/ no issues, TOOH, broke slip on tbg head bushing, fish out slip. Pump wtr dn csg, RU WRLN, Run 3.75" GR to 5100'. POOH, RIH & set CBP @ 5050' & POOH. TIH w/ AS1-X pkr & set @ 4821', est IR into lk @ 4950', pressure to 700# & SD, 400# loss in 4 min. Increase max rate to 1200#, est IR 1 BPM @ 1450#, pumped 8 bbls & SD, ISDP-900#, dropped 500# in 5 min. Bleed off tbg. Rel pkr & TOOH, SISW, SDFD. **Reported to BLM (Jim Lovato) & NMOCD (Monica Keuhling) leak @ 4950', rcv'd verbal approval to squeeze.**

5/16/19 BH: 0#, SICP: 0#. TIH & set select 4.5" cmt retainer @ 4785'. RU DES. Est IR into lk @ 4950' 1 BPM @ 1400#, pump 6 bbls @ SD, ISDP-900#, Sting out of retainer & est circ dn tbg taking ret's out csg valve, pinch ball vavle back to maintain 280# back pressure on csg, SD. **Pump 50 sx type 3 cmt, 14.6 ppg, 1.37 yield, 6.7 gals/sx mix wtr. EOT @ 4726', Rev circ 1.5 BPM @ 220#, 23 bbls pumped cmt to surface, 24.5 bbls pumped colored wtr, cont pumping, 35 bbls wtr pumped SD. TOOH w/ setting tool. SISC, SDFD. WOC.**

5/18/19 BH: 0#, SICP: 0#. TIH w/ 3-7/8" junk mill, DCs & tbg, Tag @ 4723', RU PS, DO cmt 4723'-4785', DO cmt retainer @ 4785'-4787', DO cmt 4787'-4808', 70 RPM's, 4-6K WOB, Circ hole clean, PU to 4777'. SISW, SDFD.

5/19/19 BH: 0 #, SICP: 0#, SITP: 0#. Finish cleaning cmt cuttings. Est circ 1.5 BPM @ 350#, DO cmt 4808'-4956', circ jts down to 5026'. Circ bottoms up 1.5 BPM @ 375#. TOO H w/ tbg, DC's & junk mill. SISW, SDFD.

5/20/19 BH: 0#, SICP: 0#. TIH w/ AS1-X pkr & set @ 4852'. PT sqz holes @ 4950' to 560# & record on chart, 60# loss in 5 min, Retest to 560#, 160# loss in 15 min. Move pkr below sqz holes & set @ 5036' to check pkr for lk, PT to 580#, 50# loss in 30 min, retest w/ same results. Rel pkr & TOO H. Pkr looked good. TIH w/ full bore tension pkr & set @ 4852'. Pkr @ 4852', sqz holes @ 4950', CBP @ 5050', PT 4852'-5050' to 575# on chart for 40 min, 15# loss in 30 min. Had 5# loss next 10 min. Rel pkr & TOO H. TIH w/ 3-7/8" twister bit, 8 3-1/8" DCs & 6 stands tbg, bit @ 603'. SISW, SDFD.

5/21/19 BH: 0#, SICP: 0#, SITP: 0#. Cont TIH w/ twister bit, RU PS, DO CIBP @ 5050'. Circ bottoms up, RD PS. TIH to 6415', TOO H w/ bit. TIH w/ full bore tension pkr & set @ 4820. MIT interval 4820'-6420' to 560# for 30 min, record on chart, NMOCD (Thomas Vermersch) witnessed & approved MIT, Bleed off pressure. Rel pkr, TOO H. TIH w/ 4 stands DC's, RU LD line, TOO H DC's. SISW, SDFD.

5/22/19 BH: 0#, SICP: 0 #. Tie on to BH w/ rig pump to make sure 8-5/8" X 4.5" annulus loaded, pumped 2 bbls wtr started coming up from ground 2-3' away from WH. TIH w/ 24 stands, MU RBP @ lwr to 100', set RBP w/ tail pipe hanging off bottom of RBP, TOO H w/ RH. RD rig & pull way from WH. Hydrovac around WH & 8-5/8" csg to locate csg lk. Hydrovac dwn 14' f/ ground level. Pump w/ rig pump a seen fluid coming out, fence off hole, SDFD.

5/23/19 BH: 0#, SICP: 0#. Break out bull plug on A-section, check for gas w/ monitor, LEL 0%, welder cut 3" X 5" hole in 8-5/8" csg, run 1" poly pipe inside csg & tag # 17', unable to circ poly pipe dwn. Cut ½ mule shoe on poly pipe & install 2" 1502 connection, run ¾" poly pipe inside csg & tag @ 17', unable to circ dwn. **Reported to BLM (Jim Lovato) & NMOCD (Brandon Powell) that we could not get past 17'. Rcv'd verbal permission to cement @ 17' and to cement around surface csg in the area hydrovac'd in order to provide additional integrity to the hole in the 8-5/8" csg.** Run 1" poly pipe inside csg to 17', pump 16 sx class G w/ 2% CACL2 (3.2 bbl) 15.7 ppg & fill to window in csg, seen fluid start to enter in hole that was hydrovac around csg then stopped, monitor for fluid level in csg for 10 min, Fluid never dropped, pull poly pipe out of csg & fill hole around csg to 6' from ground level w/ 74 sx (15 bbl) class G cmt w/ 2% CACL2, RD cementers. WOC & monitor fluid level in csg. Fluid level did not drop, tag cmt using tape measure 2'8" from bottom of window in csg, check LEL (LEL 0%) and weld plate over window, SDFD.

5/24/19 BH: 0#, SICP: 0#. Back fill around WH, ND BOPE, NU completion spool, NU BOPE. Land tbg hgr in completion spool, PT BOPE to 1000# for 20 min w/ no lk off. Retrieve RBP w/ tail pipe @ 100'. LD tbg, RU WRLN & set CIBP @ 4732'. **Perf MV Formation w/ 27 holes, 1 spf, .34 dia hole, @ 4345, 4355, 4365, 4369, 4387, 4400, 4403, 4417, 4422, 4436, 4440, 4446, 4464, 4475, 4498, 4512, 4530, 4533, 4540, 4550, 4563, 4584, 4589, 4613, 4618, 4635, 4671.** SISW, RD WRLN. Install 2-7/8" pipe rams, SDFD.

5/28/19 BH: 0 #, SICP: 0#. PU 2-7/8" 6.5# RTS, 8 frac string & TIH w/ pkr. MU tbg hgr, set AS1-X pkr @ 4294' & Land hgr w/ 20k compression, WL re-entry guide @ 4296'. EOT @ 4296.68'. ND BOPE, NU frac tree. PT frac tree & frac string to 7200#, 1200# loss in 10 min, bleed off pressure. ND frac tree, pull tbg hgr. Retest tbg hgr & frac string, bottom of tbg hgr leaking, remove hgr, clean threads, teflon tape & dope threads, MU tbg hgr, retest to 5000# for 5 min, no lk off, bleed off pressure & land hgr back. NU frac tree. PT frac tree & frac string to 8500# & record on chart for 15 min w/ no lk off, bleed off pressure. SISW, SDFD.

5/29/19 BH: 0 psi, SICP: 0 psi, SITP: 0 psi. RU lubricator & spear prong on sand line, RIT & rupture ceramic disc, run to 4306'. 10' past EOT @ 4296', POOH. SISW. RDRR @ 10:00 hrs. Waiting on Frac.

6/3/19 BH: 0 #, SICP: 0#. RU frac services. PT frac & N2 lines. Broke down well w/ wtr & 1000 gal 15% HCL. Frac the PT Lookout w/ 70Q 39,528 gal 20# Linear gel, 165,380 # 20/40 AZ sand and 1,592,617 scf N2. Dropped 12 RCN balls for diversion. Rig down and release crews.

6/4/19 BH: 0#, SICP: 0#, SITP: 1500#. RU FB. FB well, conduct flow test. RD & release FB crew.

6/5/19 BH: 0#, SICP: 0#, SITP: 1120#. MIRU. SI 2" line, kill tbg w/ wtr, ND goat head, dry rod 2 way check in tbg hgr, ND flow cross & master valve, NU BOPE. Install H-prep sub, PT blind & pipe rams to 250# (low) for 5 min each & 2000# (high) for 10 min each, good test. Rel AS1-X pkr & pull tbg hgr, lubricate 2 way check, kill tbg w/ wtr. TOOHL, LD frac string, install elevators & pipe rams. Tally tbg, PU & TIH w/ 3-7/8" junk mill to 3104'. SISW, SDFD.

6/6/19 BH: 0#, SICP: 920#, SITP: 0#. BDW to tank. Mill @ 3104'. TIH, Tag fill @ 4568', RU PS. Est circ w/ air/mist, CO fill to CIBP @ 4732'. Circ w/ air/mist & monitor ret's. Cont circ w/ air only & monitor fluid returns. Est wtr rate @ 7 BPH. Cir air only, made 8 bbls wtr, teaspoon sand or less. Circ air only, made 9 bbls wtr, sand ret's same. Bypass air, LD 1 jt, hang back PS, PU to 4092', Released rig crew. Flow on 3" line to tnk & monitor fluid ret's. SISW, SDFD.

6/7/19 BH: 0#, SICP: 860#, SITP: 0#. BDW to tank, Tag fill @ 4729, est fluid rate 10 BPH w/ trace of sand. Est circ w/ air /mist @ 600#, **MO CIBP @ 4732'**. Pump 2-3 bbl sweeps & circ hole clean. Bypass air, hang back PS, PU tbg & cont TIH, Tag @ 6400', RU PS. Est circ w/ air/mist @ 700#. Mill & push remainder of plug to 6420', Mill on pkr parts left in hole & CIBP @ 6420'. Pump 2-3 bbl sweeps & circ hole clean. Bypass air & pull 4', LD jt, screwed into next jt & pulled 10' & hung up. Unable to work jt dn. Circ w air/mist, tack out on tbg & work up to 50K, cont to work tbg, unable to free up tbg. Mill @ 6406', stack out & set slips. SISW, SDFD.

6/8/19 BH: 0 #, SICP: 790#, SITP: 0#. BDW to tank, cir w/ air/mist, work stuck pipe, unable to free up. Bypass air, kill tbg, hang back PS. Manually back off tbg below string float, pull string float to surface. Kill tbg & remove string float, screw tbg back together & torque up string. TIH w/ free point tool. Calibrate @ 3022', Cont in hole, 80% free @ 6385'. POOH, TIH & chemical cut tbg @ 6393'. Tbg free, POOH w/ cutter. TOOHL w/ 2-3/8" tbg, left 10' of tbg, bit sub & mil in hole. PU fishing BHA & TIH, x-0 to tbg, TIH w/ tbg & torque every connection, overshot @ 4207', SISW, SDFD.

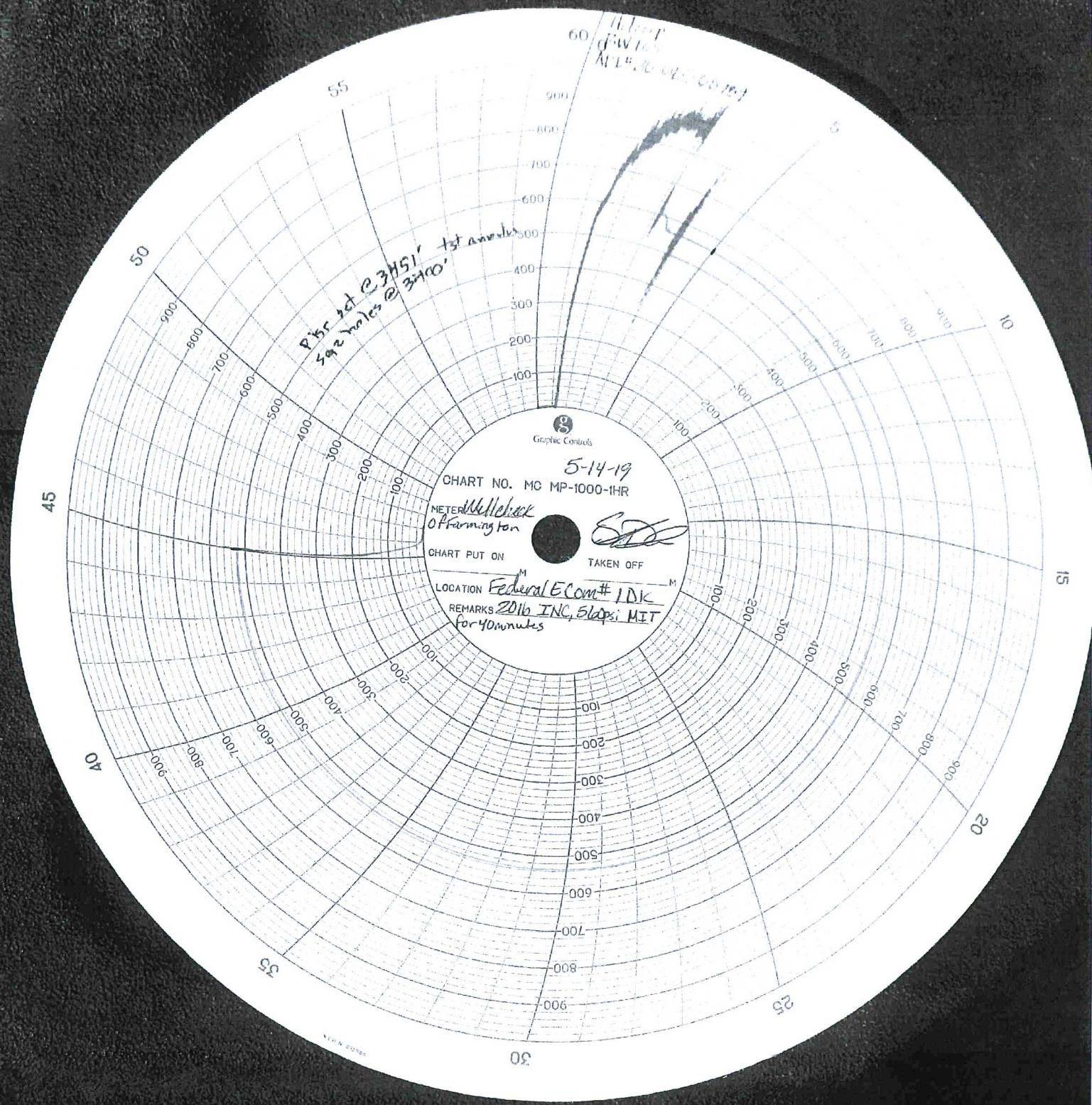
6/9/19 BH: 0#, SICP: 700#, SITP: 0#. BDW to tnk, cont TIH w/ fishing BHA & torque every connection, Tag @ 6370'. RU PS. Est circ w/ air/mist, circ down to fish top @ 6393'. Latch fish, cont to circ, jar up on fish @ 55K 5 time, drag fish up hole 25'. Cont to circ, work tbg up & dwn, pump 2-3 bbls sweeps & cont to work pipe up & dwn. Bypass air, swivel dwn 2 jts, TOOHL. 10 stand in hole, kill well, cont TOOHL, LD fish & fishing tools. TIH w/ 3-7/8" junk mill, bit sub, jar, DC's & tbg to 4197'. SISW, SDFD.

6/10/19 BH: 0#, SICP: 740#, SITP: 0#. BDW to tnk. Cont TIH to 6339'. RU PS. Est circ w/ air/mist. Circ dwn to 6420'. **MO CIBP @ 6420'**. Pump 2-3 bbl sweeps & circ hole clean. Bypass air, swivel in singles, tag @ 6557'. Est circ w/ air/mist. Mill remainder of plug & CO to PBDT @ 6631'. Pump 3 bbl sweep & circ clean. Bypass air, PU to 4229'. SISW, SDFD.

6/11/19 BH: 0#, SICP: 460#, SITP: 0#. Mill @ 4229', TIH & Tag @ 6626', RU Ps. Est circ w/ air/mist, CO 5' of fill 6626'-PBDT @ 6631', Pump 3 bbl sweep. Bypass air, RD PS, TOOHL, LD DCs. TIH w/ 50 stand tbg. MU RBP & Set @ 45'. ND BOPE, ND completion spool. NU BOPE. Latch on to RBP @ 45' equalize, release RBP, kill well. Pull RBP. Continue TIH w/ prod tbg. Land 210 jts, 2-3/8", 4.7# J-55 prod tbg @ 6519' w/ SN @ 6518'. ND BOPE, NUT. PT tbg to 500# f/ 10 min w/ no lk off. Pump wtr, continue pressure tbg w/ air & pump off check @ 1000#. Circ wtr out. Bypass air, continue flow well to tnk. RDRR @ 21:00 hrs.

This well is producing as a MV/DK with an approved Test Allowable C-104 & is waiting on RC C-104 approval.

Well will be a MV/DK commingled per DHC-4974-0.



11.000
G.W. 165
APR 20 04:00 PM

PBR set @ 3451' 1st annulus
592 miles @ 3400'

Graphic Controls

CHART NO. 5-14-19 MC MP-1000-1HR

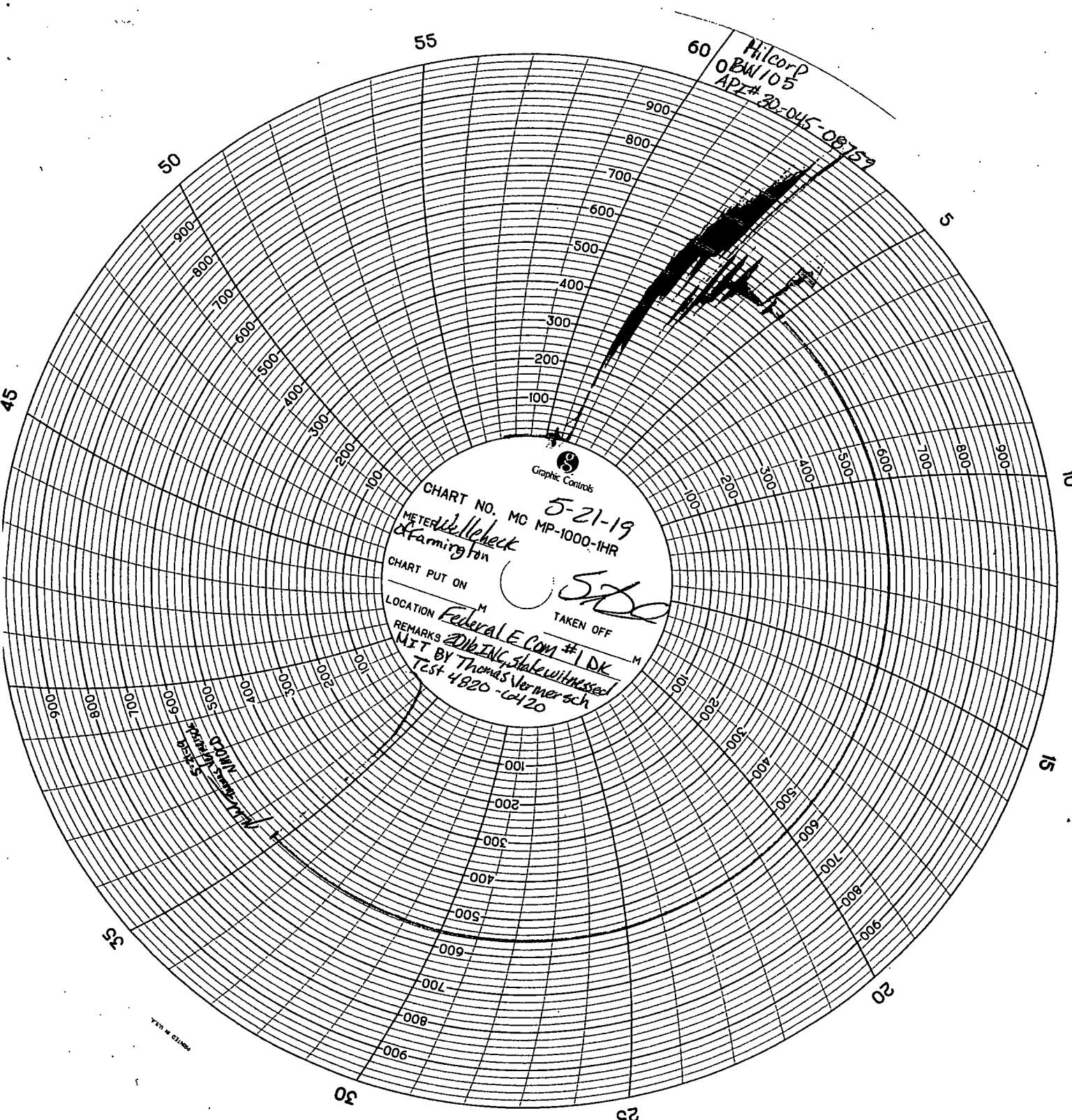
METER *Wellsbach*
OF *Farming ton*

CHART PUT ON

TAKEN OFF

LOCATION *Federal E Com # 1 DK*

REMARKS *2010 INC, 5600; MIT*
for 40 minutes



55

60

Hilcorp
OBW 105
API# 30-045-08757

50

5

10

15

20

25

30

35

TEST # 01/00