

UNITED STATES  
DEPARTMENT OF THE INTERIOR  
BUREAU OF LAND MANAGEMENT

FORM APPROVED  
Budget Bureau No. 1004-0135  
Expires: March 31, 1993

2006 APR 19 AM 7 42

**SUNDRY NOTICES AND REPORTS ON WELLS**

Do not use this form for proposals to drill or to deepen or reentry to a different reservoir  
Use "APPLICATION FOR PERMIT -" for such proposals

**SUBMIT IN TRIPLICATE**

1. Type of Well

☐ Oil Well ☒ Gas Well ☐ Other

2. Name of Operator

Dugan Production Corp.

3. Address and Telephone No.

P.O. Box 420, Farmington, NM 87499 (505) 325 - 1821

Location of Well (Footage, Sec., T., R., M., or Survey Description)

950' FNL & 1100' FEL (NE/4 NE/4)

Unit A, Sec. 9, T30N, R14W

5. Lease Designation and Serial No.

NM-113433

6. Indian, Allotted or Tribe Name

NM

7. If Unit or CA, Agreement Designation

8. Well Name and No.

Cutie Patutie #90

9. API Well No.

30 045 33504

10. Field and Pool, or Exploratory Area

Basin Fruitland Coal

11. County or Parish, State

San Juan, NM

**12. CHECK APPROPRIATE BOX(s) TO INDICATE NATURE OF NOTICE, REPORT, OR OTHER DATA**

TYPE OF SUBMISSION

TYPE OF ACTION

- ☒ Notice of Intent  
☐ Subsequent Report  
☒ Final Abandonment Notice

- ☐ Abandonment  
☐ Recompletion  
☐ Plugging Back  
☐ Casing Repair  
☐ Altering Casing  
☒ Other

Comminglie PC FR Coal

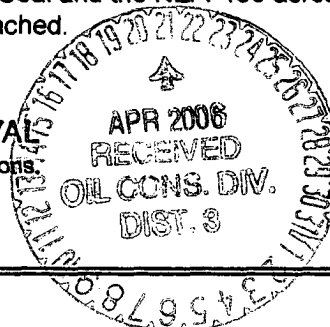
- ☐ Change of Plans  
☐ New Construction  
☐ Non-Routine Fracturing  
☐ Water Shut-Off  
☐ Conversion to Injection  
☐ Dispose Water

(Note: Report results of multiple completion on Well Completion or Recompletion Report and Log form.)

13. Describe Proposed or Completed Operations (Clearly state all pertinent details, and give pertinent dates, including estimated date of starting any proposed work. If well is directionally drilled, give subsurface locations and measured and true vertical depths for all markers and zones pertinent to this work.)

This well was permitted to be a Fruitland Coal. We plan to add the Harper Hill Fruitland Sand PC interval and commingle in the wellbore with the Fruitland Coal. An application is being prepared for regulatory approval. No other changes in the drilling permit will be made. A C-102 reflecting the E/2-320 acreage dedicated to the Basin Fruitland Coal and the NE/4-160 acreage dedicated to the Harper Hill Fruitland Sand Pictured Cliffs is attached.

**CONDITIONS OF APPROVAL**  
Adhere to previously issued stipulations.



14. I hereby certify that the foregoing is true and correct

Signed Kurt Fagrelus Title Geologist Date 4/7/2006

(This space for Federal or State office use)

Approved by Matt Halder Title PET ENG Date 4/19/06

Conditions of approval, if any:

Title 18 U.S.C. Section 1001 makes it a crime for any person knowingly and willfully to make to any department or agency of the United States any false, fictitious or fraudulent statements or representations as to any matter within its jurisdiction.

\*See Instruction on Reverse Side

NMOC

District I  
PO Box 1980, Hobbs, NM 88241-1980

State of New Mexico  
Energy, Minerals & Natural Resources Department

Form C-102

Revised February 21, 1994

District II  
PO Drawer 00, Artesia, NM 88211-0719

OIL CONSERVATION DIVISION

Submit to Appropriate District Office

State Lease - 4 Copies

Fee Lease - 3 Copies

District III  
1000 Rio Brazos Rd., Aztec, NM 87410

PO Box 2088  
Santa Fe, NM 87504-2088

2006 APR 19 AM 7 42 ☒ AMENDED REPORT

District IV  
PO Box 2088, Santa Fe, NM 87504-2088

RECEIVED

FARMINGTON NM

WELL LOCATION AND ACREAGE DEDICATION PLAT

*API Number 30-045-33504		*Pool Code 71629 / 78160	*Pool Name Basin Fruitland Coal / Harper Hill Fruit. Ss. P.C.
*Property Code	*Property Name CUTIE PATUTIE		*Well Number 90
*GRID No. 006515	*Operator Name DUGAN PRODUCTION CORPORATION		*Elevation 5608'

<sup>10</sup> Surface Location

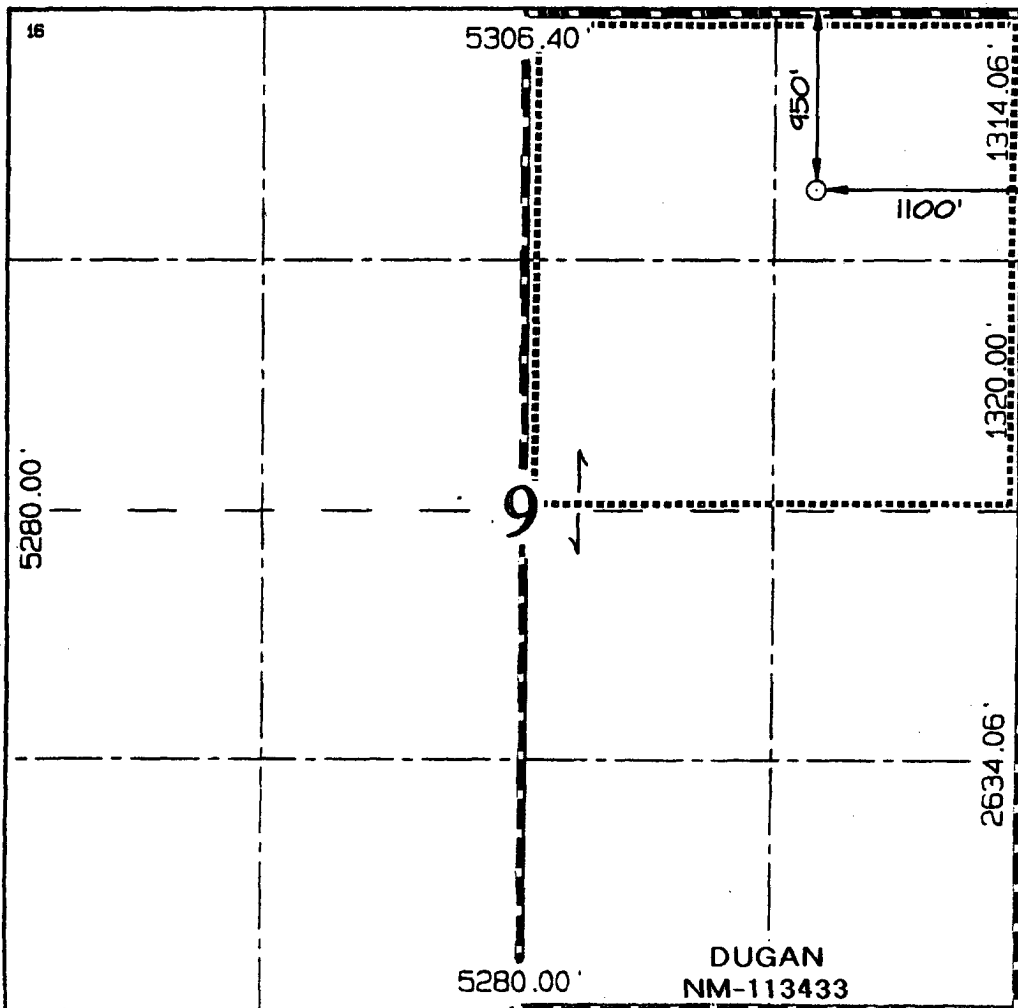
UL or lot no.	Section	Township	Range	Lot Idn	Feet from the	North/South line	Feet from the	East/West line	County
A	9	30N	14W		950	NORTH	1100	EAST	SAN JUAN

<sup>11</sup> Bottom Hole Location If Different From Surface

UL or lot no.	Section	Township	Range	Lot Idn	Feet from the	North/South line	Feet from the	East/West line	County

<sup>12</sup> Dedicated Acres 320.0-Acres E/2 160.0-Acres NE/4	<sup>13</sup> Joint or Infill	<sup>14</sup> Consolidation Code	<sup>15</sup> Order No.
---	-------------------------------	----------------------------------	-------------------------

NO ALLOWABLE WILL BE ASSIGNED TO THIS COMPLETION UNTIL ALL INTERESTS HAVE BEEN CONSOLIDATED  
OR A NON-STANDARD UNIT HAS BEEN APPROVED BY THE DIVISION



<sup>17</sup> OPERATOR CERTIFICATION

I hereby certify that the information contained herein is true and complete to the best of my knowledge and belief

*Kurt Fagrelus*  
Signature

Kurt Fagrelus  
Printed Name  
Geology

Title  
April 7, 2006

Date

<sup>18</sup> SURVEYOR CERTIFICATION

I hereby certify that the well location shown on this plat was plotted from field notes of actual surveys made by me or under my supervision, and that the same is true and correct to the best of my belief.

Survey Date: NOVEMBER 23, 2005

Signature and Seal of Professional Surveyor



*JASON C. EDWARDS*  
Certificate Number 15269