

UNITED STATES
DEPARTMENT OF THE INTERIOR
BUREAU OF LAND MANAGEMENT

APPLICATION FOR PERMIT TO DRILL, DEEPEN, OR PLUG BACK

1a. Type of Work DRILL	5. Lease Number NMSF-078212 Unit Reporting Number 12 82
1b. Type of Well GAS	6. If Indian, All. or Tribe
2. Operator BURLINGTON RESOURCES Oil & Gas Company, LP	7. Unit Agreement Name
3. Address & Phone No. of Operator PO Box 4289, Farmington, NM 87499 (505) 326-9700	8. Farm or Lease Name McCord 9. Well Number #101
4. Location of Well Unit G (SWNE), 1855' FNL & 1415' FEL, Latitude 36° 49.7814'N Longitude 108° 12.3380'W	10. Field, Pool, Wildcat Basin Fruitland Coal 11. Sec., Twn, Rge, Mer. (NMPM) Sec. 9, T30N, R13W API # 30-045- 33783
14. Distance in Miles from Nearest Town	12. County San Juan 13. State NM
15. Distance from Proposed Location to Nearest Property or Lease Line 1415'	
16. Acres in Lease	17. Acres Assigned to Well FC - 320 E/2
18. Distance from Proposed Location to Nearest Well, Drig, Compl, or Applied for on this Lease Twinned with the McCord #6	
19. Proposed Depth 1789'	20. Rotary or Cable Tools Rotary
21. Elevations (DF, FT, GR, Etc.) 5585' GL	22. Approx. Date Work will Start
23. Proposed Casing and Cementing Program See Operations Plan attached	
24. Authorized by: <u>Patsy Cleghorn</u> Sr. Regulatory Specialist	Date <u>6/7/06</u>

PERMIT NO. _____ APPROVAL DATE _____
APPROVED BY [Signature] TITLE Acting APM DATE 6/19/06

Archaeological Report attached

Threatened and Endangered Species Report attached

NOTE: This format is issued in lieu of U.S. BLM Form 3160-3

Title 18 U.S.C. Section 1001, makes it a crime for any person knowingly and willfully to make to any department or agency of the United States any false, fictitious or fraudulent statements or presentations as to any matter within its jurisdiction.

Not an HPA FC Well

DRILLING OPERATIONS AUTHORIZED ARE
SUBJECT TO COMPLIANCE WITH ATTACHED
"GENERAL REQUIREMENTS".

NMOC

This action is subject to technical and
procedural review pursuant to 43 CFR 3165.3
and appeal pursuant to 43 CFR 3165.4

DISTRICT I
1625 N. French Dr., Hobbs, N.M. 88240

State of New Mexico
Energy, Minerals & Natural Resources Department

Form C-102
Revised August 15, 2000

DISTRICT II
811 South First, Artesia, N.M. 88210

DISTRICT III
1000 Rio Brazos Rd., Aztec, N.M. 87410

DISTRICT IV
2040 South Pacheco, Santa Fe, NM 87506

OIL CONSERVATION DIVISION
2040 South Pacheco
Santa Fe, NM 87505

Submit to Appropriate District Office
State Lease - 4 Copies
Fee Lease - 3 Copies

☐ AMENDED REPORT

WELL LOCATION AND ACREAGE DEDICATION PLAT

*API Number 30-045-33783		*Pool Code 71629	*Pool Name Basin Fruitland Coal
*Property Code 7300	*Property Name MCCORD		*Well Number 101
*OGRID No. 14538	*Operator Name BURLINGTON RESOURCES OIL AND GAS COMPANY LP		*Elevation 5585'

¹⁰ Surface Location

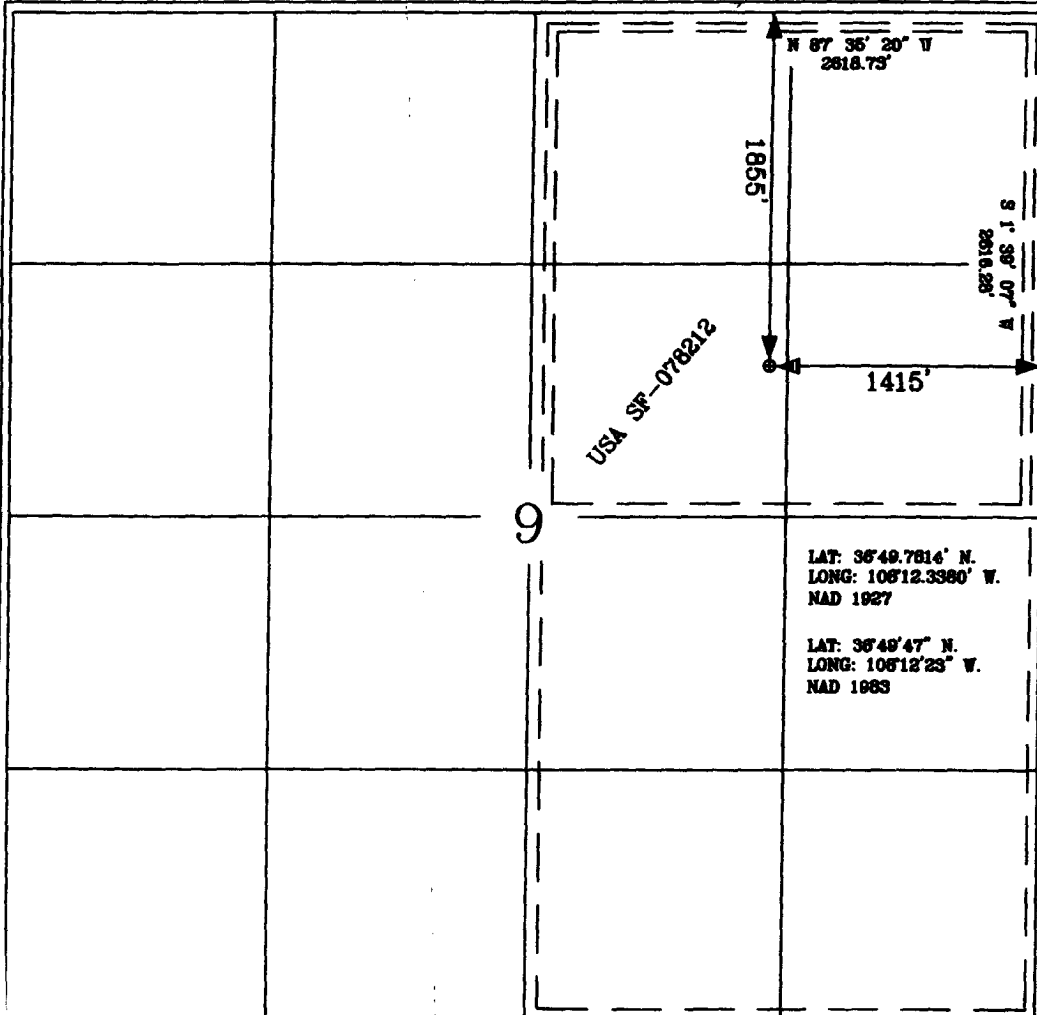
UL or lot no.	Section	Township	Range	Lot Idn	Feet from the	North/South line	Feet from the	East/West line	County
G	9	30-N	13-W		1855'	NORTH	1415'	EAST	SAN JUAN

¹¹ Bottom Hole Location If Different From Surface

UL or lot no.	Section	Township	Range	Lot Idn	Feet from the	North/South line	Feet from the	East/West line	County
G									
*Dedicated Acres FC 320.0 ac E2			*Joint or Infill		*Consolidation Code		*Order No.		

NO ALLOWABLE WILL BE ASSIGNED TO THIS COMPLETION UNTIL ALL INTERESTS HAVE BEEN CONSOLIDATED
OR A NON-STANDARD UNIT HAS BEEN APPROVED BY THE DIVISION

16



17 OPERATOR CERTIFICATION

I hereby certify that the information contained herein is true and complete to the best of my knowledge and belief

Amanda Sandoval
Signature

Amanda Sandoval
Printed Name

Regulatory Assistant III.
Title

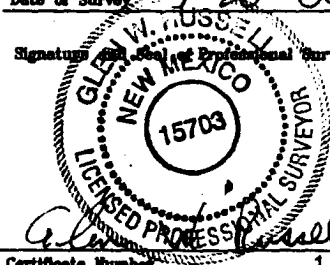
3/28/2006
Date

18 SURVEYOR CERTIFICATION

I hereby certify that the well location shown on this plat was plotted from field notes of actual surveys made by me or under my supervision, and that the same is true and correct to the best of my belief.

Date of Survey 3-20-06

Signature of Licensed Professional Surveyor:



Certificate Number 15703

District I

1625 N. French Dr., Hobbs, NM 88240

District II

1301 W. Grand Ave., Artesia, NM 88210

District III

1000 Rio Brazos Rd., Aztec, NM 87410

District IV

1220 S. St. Francis Dr., Santa Fe, NM 87505

OIL CONSERVATION DIVISION

1220 South St. Francis Dr.

Santa Fe, NM 87505

WELL API NO.

30-045-33783

5. Indicate Type of Lease

STATE ☐

FEE ☐

6. State Oil & Gas Lease No.

7. Lease Name or Unit Agreement Name

McCord

8. Well Number

101

9. OGRID Number

14538

10. Pool name or Wildcat

Basin Fruitland Coal

SUNDRY NOTICES AND REPORTS ON WELLS

(DO NOT USE THIS FORM FOR PROPOSALS TO DRILL OR TO DEEPEN OR PLUG BACK TO A DIFFERENT RESERVOIR. USE "APPLICATION FOR PERMIT" (FORM C-101) FOR SUCH PROPOSALS.)

1. Type of Well:

Oil Well ☐

Gas Well ☒

Other

2. Name of Operator

BURLINGTON RESOURCES OIL & GAS COMPANY LP

3. Address of Operator

3401 E. 30TH STREET, FARMINGTON, NM 87402

4. Well Location

Unit Letter G : 1855 feet from the North line and 1415 feet from the East line
Section 9 Township 30N Range 13W NMPM County San Juan

11. Elevation (Show whether DR, RKB, RT, GR, etc.)

5585' GL

Pit or Below-grade Tank Application

☐ or Closure ☐

Pit type

New Drill

Depth to Groundwater

>100'

Distance from nearest fresh water well

>1000'

Distance from nearest surface water

2200'

<1000'

Pit Liner Thickness:

12

mil

Below-Grade Tank:

Volume

bbls;

Construction Material

12. Check Appropriate Box to Indicate Nature of Notice, Report or Other Data

NOTICE OF INTENTION TO:

PERFORM REMEDIAL WORK ☐

TEMPORARILY ABANDON ☐

PULL OR ALTER CASING ☐

PLUG AND ABANDON ☐

CHANGE PLANS ☐

MULTIPLE COMPL ☐

SUBSEQUENT REPORT OF:

REMEDIAL WORK ☐

COMMENCE DRILLING OPNS. ☐

CASING/CEMENT JOB ☐

ALTERING CASING ☐

P AND A ☐

OTHER:

New Drill

☒

OTHER:

☐

13. Describe proposed or completed operations. (Clearly state all pertinent details, and give pertinent dates, including estimated date of starting any proposed work). SEE RULE 1103. For Multiple Completions: Attach wellbore diagram of proposed completion or recompletion.

New Drill. Lined:

Burlington Resources proposes to construct a new drilling pit and an associated vent/flare pit. Based on Burlington's interpretation of the Ecosphere's risk ranking criteria, the new drilling pit will be a lined pit as detailed in Burlington's Revised Drilling / Workover Pit Construction / Operation Procedures dated November 11, 2004 on file at the NMOCD office. A portion of the vent/flare pit will be designed to manage fluids and that portion will be lined as per the risk ranking criteria. Burlington Resources anticipates closing these pits according to the Drilling / Workover Pit Closure Procedure dated August 2, 2004 on file at the NMOCD office

I hereby certify that the information above is true and complete to the best of my knowledge and belief. I further certify that any pit or below-grade tank has been/will be constructed or closed according to NMOCD guidelines ☐ a general permit ☒ or an (attached) alternative OCD-approved plan ☐.

SIGNATURE

Patsy Clugston

TITLE

Sr. Staff Regulatory Specialist

DATE

4/10/2006

Type or print name

Patsy Clugston

E-mail address:

pclugston@br-inc.com

Telephone No.

505-326-9518

For State Use Only

APPROVED BY

[Signature]

TITLE

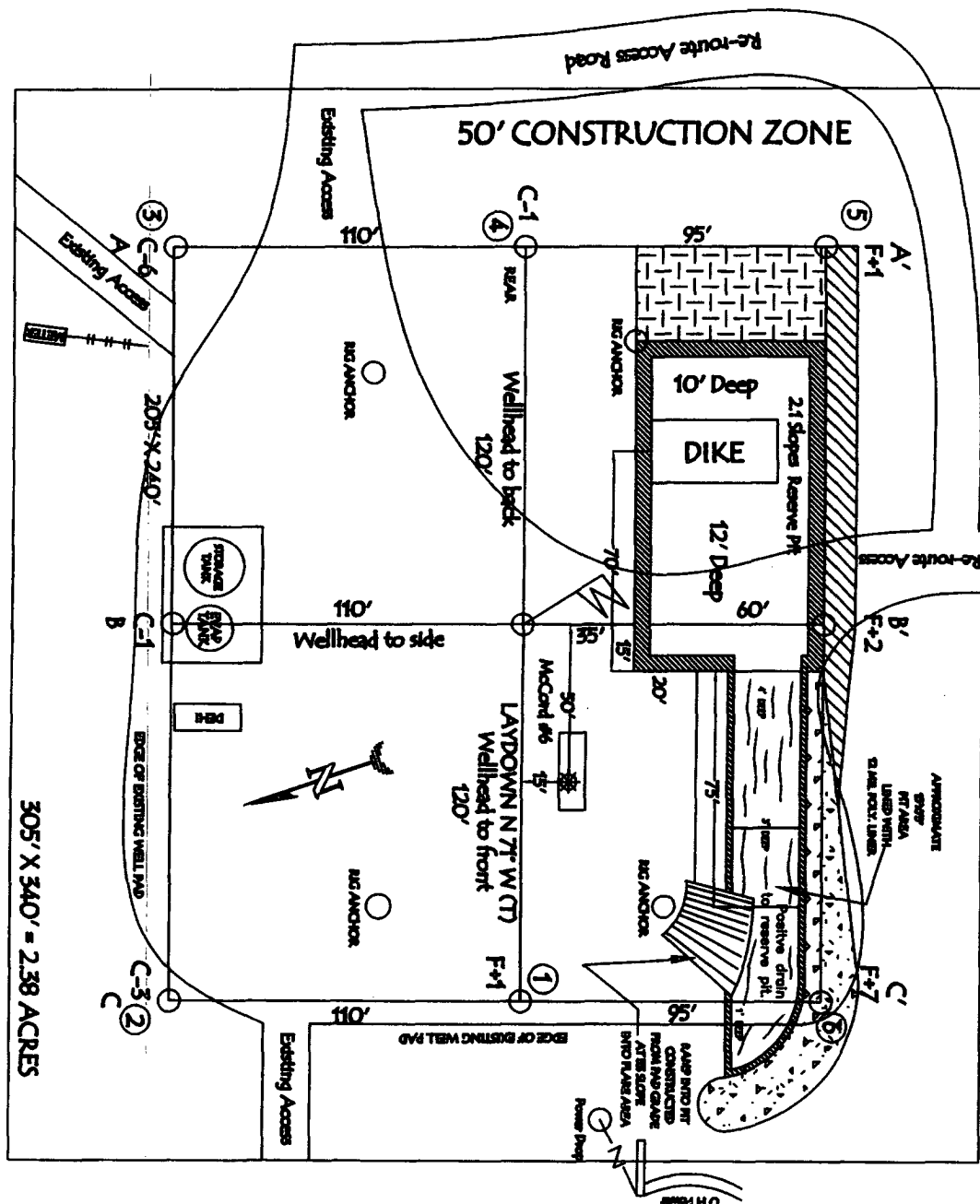
DEPUTY OIL & GAS INSPECTOR, DIST. 6

DATE

JUN 21 2006

Conditions of Approval (if any):

RESERVE PIT DIKE: TO BE 8' ABOVE DEEP SIDE (OVERFLOW - 3' WIDE AND 1' ABOVE SHALLOW SIDE).



LATITUDE: 36° 49.7814'N LONGITUDE: 108° 12.3380'W NAD27

**NOTE: VECTOR SURVEYS IS NOT LIABLE FOR UNDERGROUND UTILITIES OR PIPELINES.
CONTRACTOR SHOULD CALL ONE-CALL FOR LOCATION OF ANY MARKED OR UNMARKED BURIED
PIPELINES OR CABLES ON WELL PAD AND OR ACCESS ROAD AT LEAST TWO (2) WORKING DAYS PRIOR TO CONSTRUCTION.**

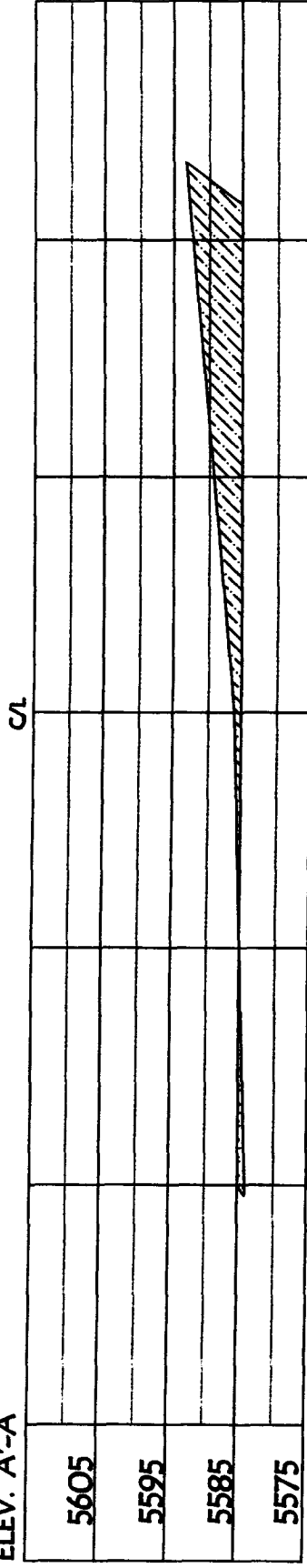
BURLINGTON RESOURCES OIL & GAS COMPANY LP

MCCORD 101, 1855' FNL & 1415' FEL

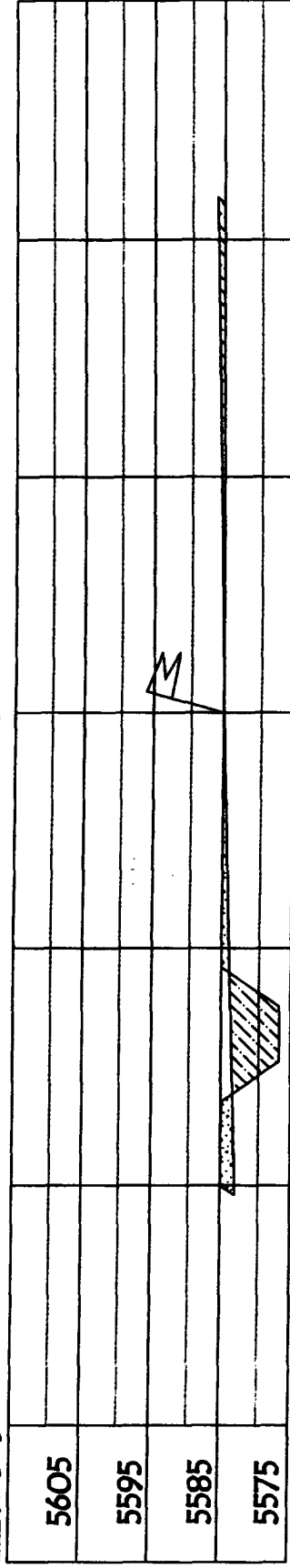
SECTION 9, T-30- N, R-13-W, NMPM, SAN JUAN COUNTY, NM

GROUND ELEVATION: 5585', DATE: MARCH 13, 2006

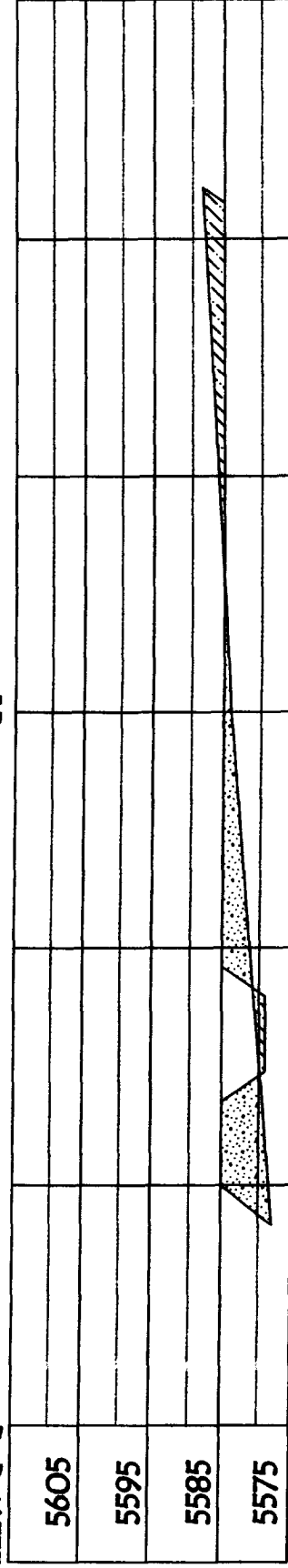
ELEV. A'-A



ELEV. B'-B



ELEV. C'-C



NOTE: VECTOR SURVEYS IS NOT LIABLE FOR UNDERGROUND UTILITIES OR PIPELINES.
CONTRACTOR SHOULD CALL ONE-CALL FOR LOCATION OF ANY MARKED OR UNMARKED BURIED
PIPELINES OR CABLES ON WELL PAD AND OR ACCESS ROAD AT LEAST TWO (2) WORKING DAYS PRIOR TO CONSTRUCTION.

OPERATIONS PLAN

Well Name: McCord #101
Location: Unit G (SWNE), 1855' FNL & 1415' FEL, Section 9, T30N, R13W
 San Juan County, New Mexico
 Latitude 36° 49.7814'N; Longitude 108° 12.3380'W
Formation: Basin Fruitland Coal
Elevation: 5585' GR

Formation:	Top	Bottom	Contents
Surface	n/a		
Ojo Alamo	n/a		
Kirtland	Surface	1166'	
T/Fruitland	1166'	1589'	gas
Pictured Cliffs	1589'		
Total Depth	1789'		

Logging Program: None

Mud Program:

<u>Interval</u>	<u>Type</u>	<u>Weight</u>	<u>Vis. Fluid Loss</u>
0- 120'	Spud Mud/Air/AirMist	8.4-8.9	40-50 no control
120-1789'	Non-dispersed	8.4-9.5	30-60 no control

Casing Program:

<u>Hole Size</u>	<u>Depth Interval</u>	<u>Csg.Size</u>	<u>Wt.</u>	<u>Grade</u>
8 $\frac{3}{4}$ "	0 - 120'	7"	20.0#	J-55
6 $\frac{1}{4}$ "	0 - 1789'	4 1/2"	10.5#	J/K-55

Tubing Program:

0 - 1789'	2 3/8"	4.7#	J-55
-----------	--------	------	------

Float Equipment: 7" surface casing - guide shoe. Centralizers will be run in accordance with Onshore Order #2.

4 1/2" production casing - float shoe and float collar on bottom. Standard centralizers thereafter every fourth joint up to the base of the surface pipe.

Wellhead Equipment: 7" x 4 1/2" x 2 3/8" x 11" 2000 psi xmas tree assembly.

April 10, 2006

Cementing:

7" surface casing Pre-Set Drilled - Cement with Type I, II cement with 20% flyash mixed at 14.5 ppg, 1.61 cu ft per sack yield. (Bring cement to surface). Wait on cement for 24 hours for pre-set holes before pressure testing or drilling out from under surface.

7" surface casing - Cement with 42 sx Type III cement with 0.25 pps Celloflake, 3% CaCl. (54cu ft of slurry @ 1.28 yield). 200% excess, bring cement to surface. Wait on cement for 8 hrs for conventionally set holes before pressure testing or drilling out from under surface.

WOC until cement establishes 250 psi compressive strength prior to NU of BOPE.

4 1/2" production casing - Cement with 71 sx (151 cu ft of slurry @ 2.13 yield) Premium Lite with 3% calcium chloride, 5 pps LCM-1, and 1/4#/sack celloflake, 0.4% FL-52, & 0.4% SMS. Tail with 90 sx (124 cu ft of slurry @ 1.38 yield) Type III cmt with 1% calcium chloride, 1/4#/sack Celloflake and 0.2% FL-52. Total of 275 cf - 50% excess to circulate to surface.

BOP and tests:

Surface to TD - 11" 2000 psi (minimum double gate BOP stack (Reference Figure #1 and #2). Prior to drilling out surface casing, test ~~rams~~^{BOP} to 600 psi/30 min.

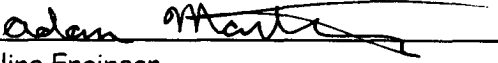
Completion - 6" 2000 psi (minimum) double gate BOP stack (Reference Figure #2). Prior to completion operations, test rams and casing to 1500 psi/30 min.

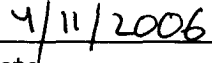
From surface to TD - choke manifold (Reference Figure #3).

Pipe rams will be actuated at least once each day and blind rams actuated once each trip to test proper functioning. An upper kelly cock valve with handle and drill string safety valves to fit each drill string will be maintained and available on the rig floor.

Additional information:

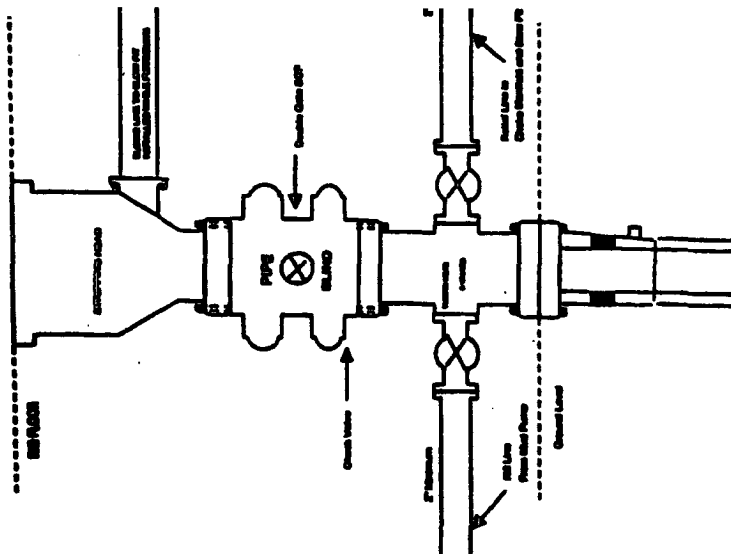
- * The Fruitland Coal formations will be completed.
- * Anticipated pore pressure for the Fruitland is between 600 - 700 psi.
- * This gas is dedicated.
- * The East half is dedicated to Fruitland Coal.
- * New casing will be utilized.
- * Pipe movement (either rotation or reciprocation) will be done if hole conditions permit.


Drilling Engineer


Date 4/11/2006

BURLINGTON RESOURCES

Completion/Workover Rig
BOP Configuration
2,000 psi System

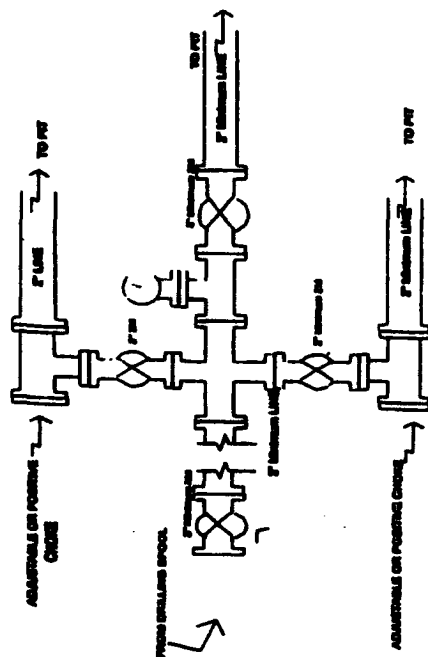


Minimum BOP Installation for all Completion/Workover Operations. 7-1/16" bore, 2000 psi minimum working pressure double gate BOP to be equipped with blind and pipe rams. A stopping head to be installed on the top of the BOP. All BOP equipment is 2000 psi working pressure or greater excluding 400 psi stopping head.

Figure #2

BURLINGTON RESOURCES

Drilling Rig
Choke Manifold Configuration
2000 psi System

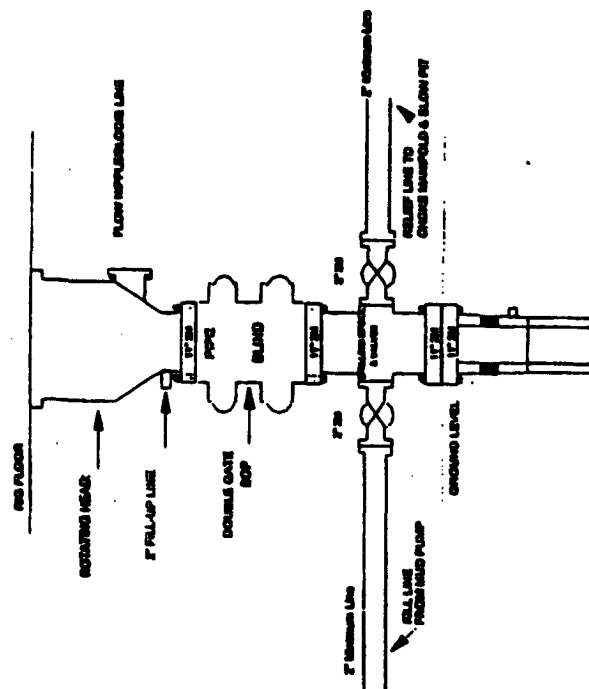


Choke manifold installation from Surface Casing Press to Total Depth. 2,000psi working pressure equipment with two chokes.

Figure #3

Burlington Resources

Drilling Rig
2000 psi System



BOP Installation from Surface Casing Point to Total Depth. 17" Bore 100' Minimum, 2000 psi working pressure double gate BOP to be equipped with blind rams and pipe rams. A 400 psi stopping head on top of ram prevention. All BOP equipment is 2,000 psi working pressure.

Figure #1