

**UNITED STATES
DEPARTMENT OF THE INTERIOR
BUREAU OF LAND MANAGEMENT**

Sundry Notices and Reports on Wells

1. Type of Well
GAS

2. Name of Operator
ConocoPhillips

3. Address & Phone No. of Operator

PO Box 4289, Farmington, NM 87499 (505) 326-9700

4. Location of Well, Footage, Sec., T, R, M

Unit O (SWSE), 795' FSL & 1475' FEL, Section 24, T31N, R8W, NMPM



2006 JUN 22 Lease Number 27
NMSF-079351

6. If Indian, All. or
Tribe Name
OTC FARMINGTON NM

7. Unit Agreement Name

8. San Juan 32-8 Unit
Well Name & Number

9. SJ 32-8 Unit #206A
API Well No.

30-045-33308

10. Field and Pool

Basin Fruitland Coal

11. County and State
San Juan Co., NM

12. CHECK APPROPRIATE BOX TO INDICATE NATURE OF NOTICE, REPORT, OTHER DATA

Type of Submission

☒ Notice of Intent

☐ Subsequent Report

☐ Final Abandonment

Type of Action

☐ Abandonment

☐ Recompletion

☐ Plugging

☐ Casing Repair

☐ Altering Casing

☒ Change of Plans

☐ New Construction

☐ Non-Routine Fracturing

☐ Water Shut off

☐ Conversion to Injection

☒ Other – Surface Casing Setting depth &
rotation of pad.

13. Describe Proposed or Completed Operations

Verbal approval was given by Bill Liess on 6/22/06 to rotate the pad for safety reasons for drilling. The new footages are indicated above. The old footages were 815' FSL & 1440' FEL. All disturbance will remain on the pad initially permitted. Attached you will find the new plat and cut & fill diagram with the proposed changes.

Verbal approval was given by Steve Mason on 6/22/06 to change the surface casing setting depth from 213' to 600'. We are doing this to protect a water well in the area. See the attached plan with setting depths and cement calculations.

14. I hereby certify that the foregoing is true and correct.

Signed Patsy Clugston Patsy Clugston Title Sr. Regulatory Specialist Date 6/22/06

(This space for Federal or State Office use)

APPROVED BY Original Signed: Stephen Mason Title _____ Date JUN 23 2006

CONDITION OF APPROVAL, if any:

Title 18 U.S.C. Section 1001, makes it a crime for any person knowingly and willfully to make any department or agency of the United States any false, fictitious or fraudulent statements or representations as to any matter within its jurisdiction.

NMOC

District I
PO Box 1980, Hobbs, NM 88241-1980

District II
PO Drawer DD, Artesia, NM 88211-0719

District III
1000 Rio Brazos Rd., Aztec, NM 87410

District IV
PO Box 2088, Santa Fe, NM 87504-2088

State of New Mexico
Energy, Minerals & Natural Resources Department

OIL CONSERVATION DIVISION
PO Box 2088
Santa Fe, NM 87504-2088

Form C-102
Revised February 21, 1994
Instructions on back
Submit to Appropriate District Office
State Lease - 4 Copies
Fee Lease - 3 Copies

☐ AMENDED REPORT

WELL LOCATION AND ACREAGE DEDICATION PLAT

*API Number		*Pool Code 71629	*Pool Name BASIN FRUITLAND COAL
*Property Code 31330	*Property Name SAN JUAN 32-8 UNIT		*Well Number 206A
*OGRID No. 217817	*Operator Name CONOCOPHILLIPS COMPANY		*Elevation 6386'


¹⁰ Surface Location

UL or lot no.	Section	Township	Range	Lot Idh	Feet from the	North/South line	Feet from the	East/West line	County
0	24	31N	8W		795	SOUTH	1475	EAST	SAN JUAN

¹¹ Bottom Hole Location If Different From Surface

UL or lot no.	Section	Township	Range	Lot Idh	Feet from the	North/South line	Feet from the	East/West line	County
¹² Dedicated Acres 320.0 Acres - E/2					¹³ Joint or Infill		¹⁴ Consolidation Code		¹⁵ Order No.

NO ALLOWABLE WILL BE ASSIGNED TO THIS COMPLETION UNTIL ALL INTERESTS HAVE BEEN CONSOLIDATED OR A NON-STANDARD UNIT HAS BEEN APPROVED BY THE DIVISION

¹⁶ 5176.38'	5241.06'	2562.78'	LEASE SF-079351	2570.70'	1475'	5232.48'
	24					
LAT: 36.87802 'N LONG: 107.62324 'W DATUM: NAD83						
¹⁷ OPERATOR CERTIFICATION I hereby certify that the information contained herein is true and complete to the best of my knowledge and belief <i>Virgil E. Chavez</i> Signature Virgil E. Chavez Printed Name Projects & Operations Lead Title 6/22/06 Date						
¹⁸ SURVEYOR CERTIFICATION I hereby certify that the well location shown on this plat was plotted from field notes of actual surveys made by me or under my supervision, and that the same is true and correct to the best of my belief Date of Survey: MAY 26, 2006 Signature and Seal of Professional Surveyor  <i>JASON C. EDWARDS</i> Certificate Number 15269						

CONOCOPHILLIPS COMPANY SAN JUAN 32-8 UNIT #206A
795' FSL & 1475' FEL, SECTION 24, T31N, R8W, NMPM
SAN JUAN COUNTY, NEW MEXICO ELEVATION: 6386'

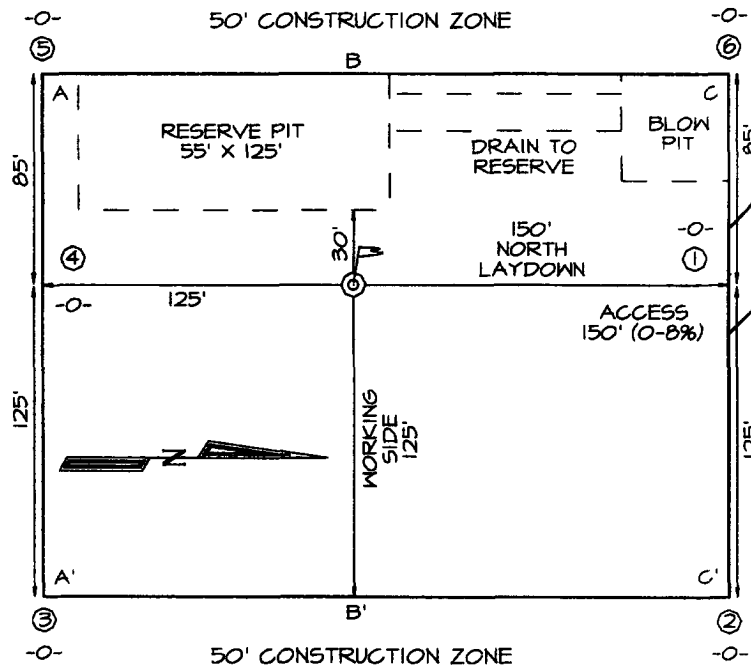
EXISTING ROADWAY

PLAT NOTE:

SURFACE OWNER
 ConocoPhillips Company

LATITUDE: 36.87802° N
LONGITUDE: 107.62324° W
 DATUM: NAD1983

SOUTH EDGE OF 20' CONSTRUCTION ZONE - PROPERTY LINE



NORTH EDGE 30' CONSTRUCTION ZONE - PROPERTY LINE

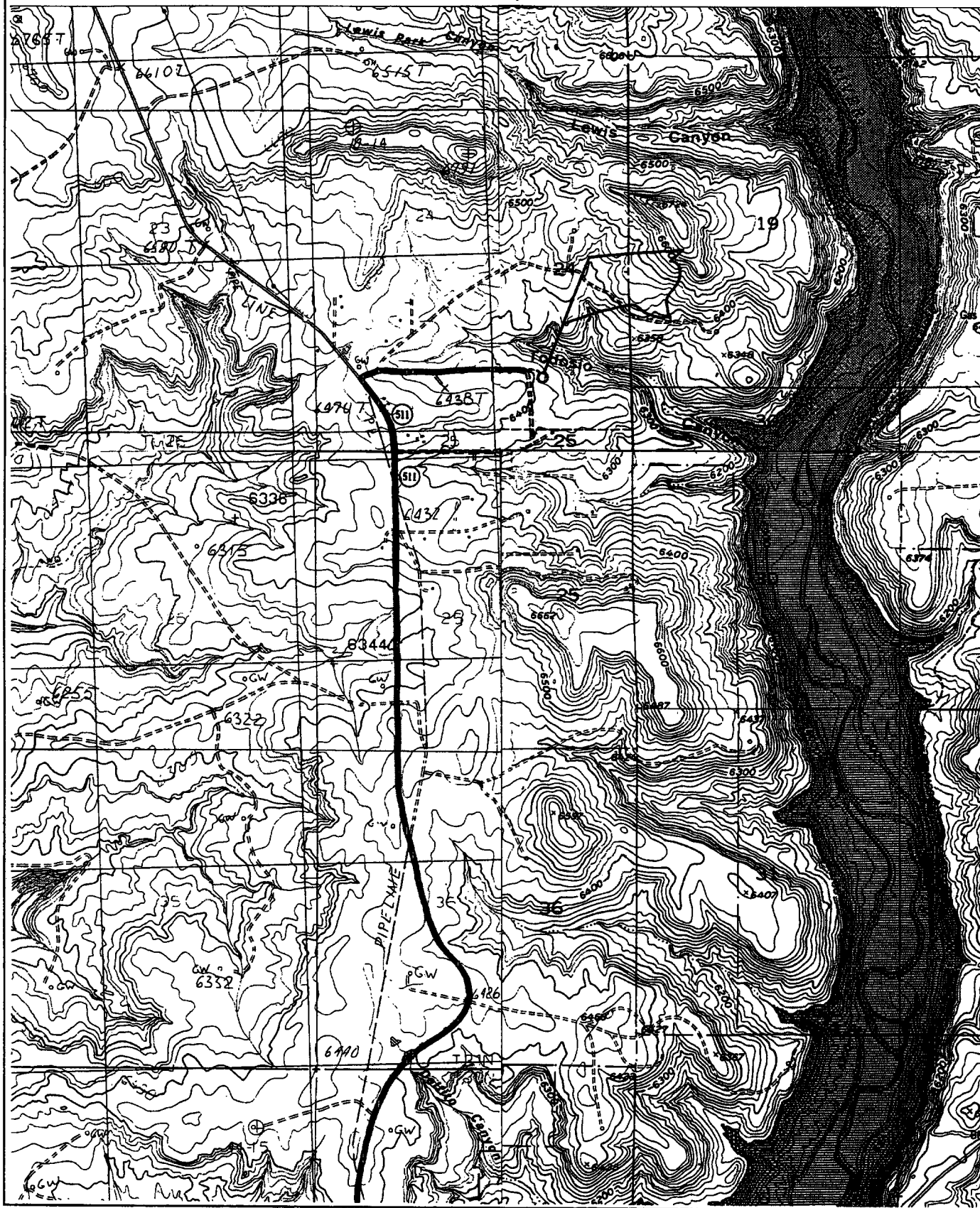
OH POWER-LINE (3-WIRE)

OH POWER-LINE (3-WIRE)

A-A'						
6396'						
6386'						
6376'						
B-B'						
6396'						
6386'						
6376'						
C-C'						
6396'						
6386'						
6376'						

CONOCOPHILLIPS COMPANY SAN JUAN 32-8 UNIT #206A

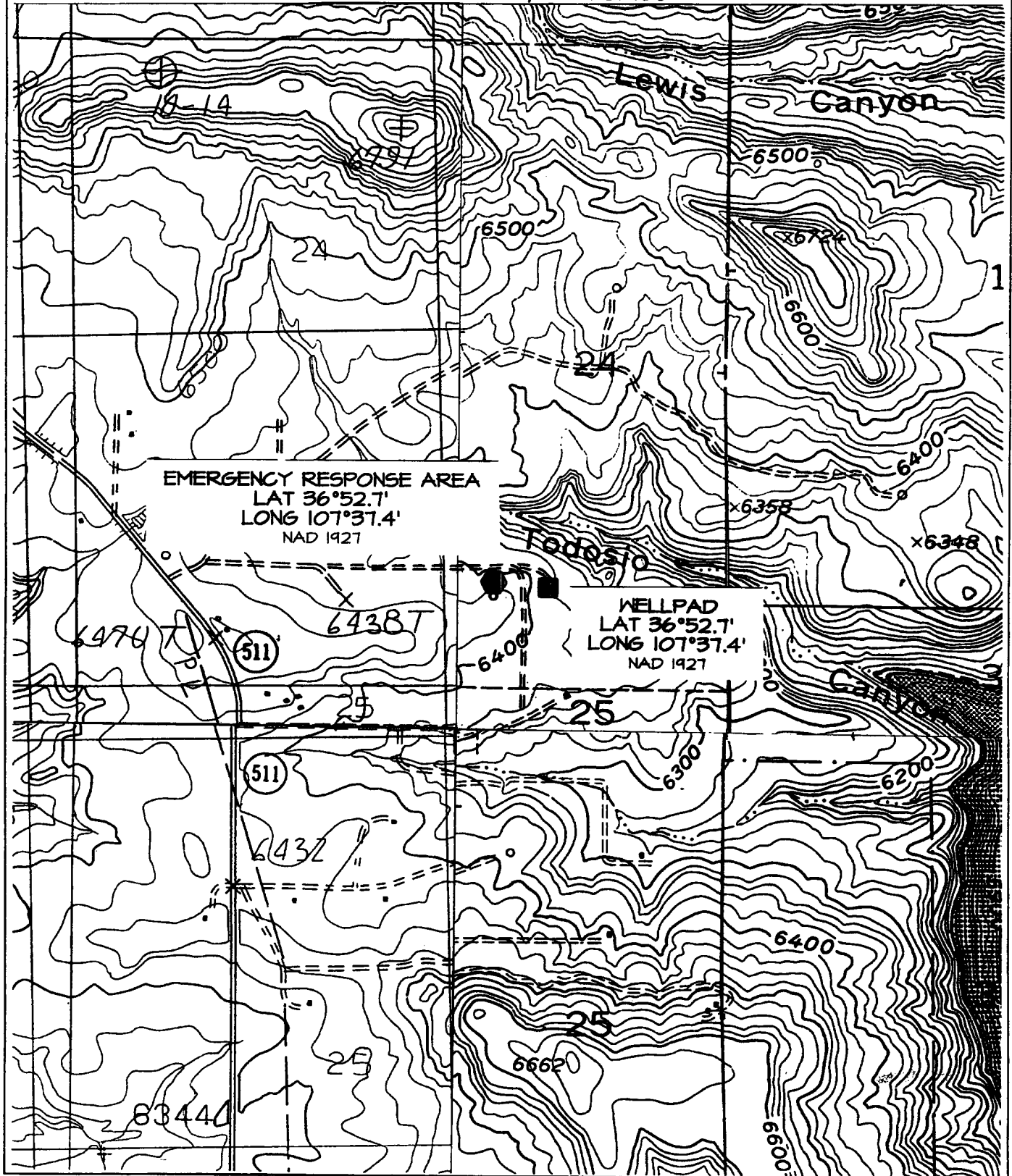
795' FSL & 1475' FEL, SECTION 24, T31N, R8W, N.M.P.M.
SAN JUAN COUNTY, NEW MEXICO



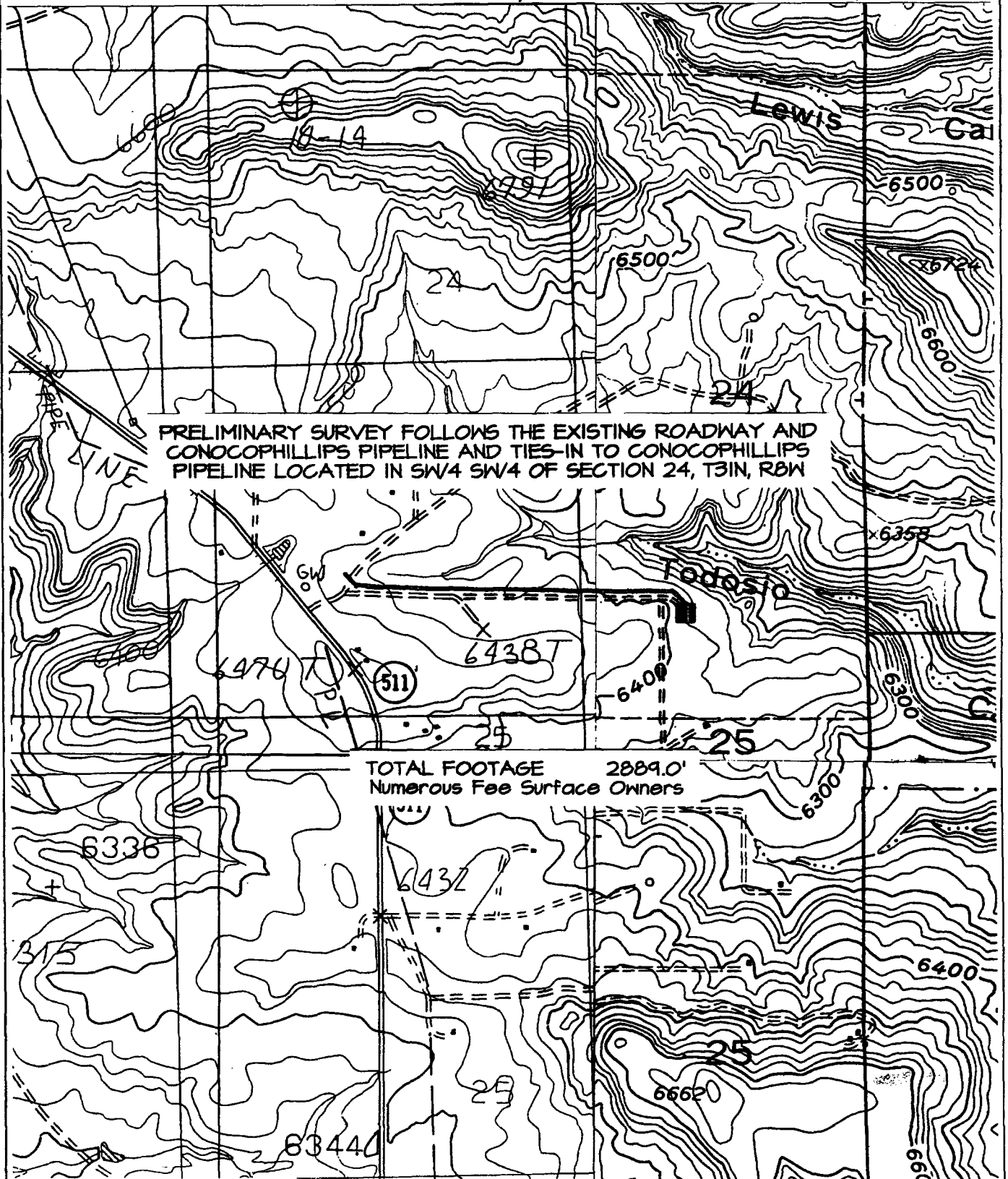
EMERGENCY RESPONSE AREA

CONOCOPHILLIPS COMPANY SAN JUAN 32-8 UNIT #206A

795' FSL & 1475' FEL, SECTION 24, T31N, R8W, N.M.P.M.
SAN JUAN COUNTY, NEW MEXICO



795' FSL & 1475' FEL, SECTION 24, T31N, R8W, N.M.P.M.
SAN JUAN COUNTY, NEW MEXICO



Directions from the Intersection of US Hwy 550 & State Hwy 173 in Aztec, NM
to ConocoPhillips Company San Juan 32-8 Unit #206A

795' FSL & 1475' FEL, Section 24, T31N, R8W, NMPM, San Juan County, NM

From the intersection of US Hwy 550 & State Hwy 173 in Aztec, NM, travel Easterly on State Hwy 173 for 18.1 miles to the intersection of State Highway 173 & State Highway 511;

Go left (North-easterly) on State Highway 511 for 11.6 miles to fork in road @ Milepost 19.6;

Go right (North-easterly) for 0.1 miles to fork in road;

Go right (Easterly) for 0.5 miles to new access on left-hand side of existing roadway which continues for 150' to staked location.

HOLE: 12.25 "
CSG OD: 9.625 "
CSG ID: 9.001 "
WGT: 32.3 ppf
GRADE: H-40
EXCESS: 125 %
DEPTH: 600'

SURFACE:

Option 1
368 sx
76.6 bbls
430.3 cuft
1.17 ft³/sx
15.8 ppg
4.973 gal/sx
Class G Cement
+ 3% S001 Calcium Chloride
+ 0.25 lb/sx D029 Cellophane Flakes

Comp. Strength
6 hrs 250 psi
8 hrs 500 psi
psi

Option 2
356 sx
76.6 bbls
430.3 cuft
1.21 ft³/sx
15.6 ppg
5.29 gal/sx
Standard Cement
+ 3% Calcium Chloride
+ 0.25 lb/sx Flocele

Comp. Strength
6 hrs 250 psi
8 hrs 500 psi

HOLE: 8.75 "
CSG OD: 7 "
CSG ID: 6.456 "
WGT: 20 ppf
GRADE: J-55
EXCESS: 160 %
TAIL: 300'
DEPTH: 2985'

INTERMEDIATE LEAD:

Option 1
353 sx
163.9 bbls
920.1 cuft
2.61 ft³/sx
11.7 ppg
15.876 gal/sx
Class G Cement
+ 0.25 lb/sx D029 Cellophane Flakes
+ 3% D079 Extender
+ 0.20% D046 Antifoam

Comp. Strength
2:37 50 psi
40 hrs 500 psi
psi

Option 2
316 sx
163.9 bbls
920.1 cuft
2.91 ft³/sx
11.5 ppg
16.88 gal/sx
Standard Cement
+ 3% Econolite (Extender)
+ 0.25 lb/sx Flocele
+ 10 lb/sx Gilsontite

Comp. Strength
12 hrs 306 psi
24 hrs 433 psi
48 hrs 531 psi

INTERMEDIATE TAIL:

Option 1
100 sx
22.6 bbls
126.9 cuft
1.27 ft³/sx
13.5 ppg
5.182 gal/sx
50/50 Poz: Class G Cement
+ 0.25 lb/sx D029 Cellophane Flakes
+ 2% S001 Calcium Chloride
+ 2% D020 Bentonite
+ 5.0 lb/sx D024 Gilsontite Extender
+ 0.2% D046 Antifoam

Comp. Strength
24 hrs 908 psi
48 hrs 1950 psi
psi

Option 2
95 sx
22.6 bbls
126.9 cuft
1.33 ft³/sx
13.5 ppg
5.36 gal/sx
50/50 Poz: Standard Cement
+ 2% Bentonite
+ 0.25 lb/sx Flocele
+ 5.0 lb/sx Gilsontite
+ 2% Calcium Chloride

Comp. Strength
3:50 500 psi
12 hrs 1281 psi
24hrs 1950 psi

DEPTH: 3355'

Clugston Patsy L

From: Farrell, Juanita R [Juanita.R.Farrell@conocophillips.com]
Sent: Friday, June 16, 2006 4:27 PM
To: Neuschafer, Michael P
Cc: Chavez, Virgil E; Clugston Patsy L
Subject: SJ 32-8 #206A - Revised surface casing

Attachments: Picture (Metafile)

Mike:

Per our phone conversation today:

Virgil has asked Regulatory to submit a sundry revising the surface casing for this well. We need well plans revised to attach.

Virgil indicated the surface casing needs to be set deeper to protect the FW aquifer at 600 feet.

Patsy:

APD was approved 9/29/05.

Virgil asked that we get this out asap as it is on the drill schedule for end of the month. I will be out of the office Monday, can you submit sundry?

In addition to the change in surface casing, we also are changing the location of the hole and the layout of the pad. Revised C-102 and cut and fill are in blue folder on your chair. Do we need to submit revised C-103 for pit as well?

Thanks.

The logo for ConocoPhillips, featuring the word "Conoco" in a bold, sans-serif font, followed by a stylized upward-pointing arrow, and then the word "Phillips" in a similar font.

Juanita Farrell
Regulatory Specialist
3401 E. 30th Street 87402-8807
P.O. Box 4289
Farmington, NM 87499
505.326.9597 (Office)
505.599.4062 (Fax)