

District III
1000 Rio Brazos Rd., Aztec, NM 87410
Phone: (505) 334-6178 Fax: (505) 334-6170

Form C-101
Permit 33535

State of New Mexico
Energy, Minerals and Natural Resources

Oil Conservation Division
1220 S. St Francis Dr.
Santa Fe, NM 87505



OIL APPLICATION FOR PERMIT TO DRILL, RE-ENTER, DEEPEN, PLUGBACK, OR ADD A ZONE

1. Operator Name and Address ENERGEN RESOURCES CORPORATION 605 21ST STREET NORTH BIRMINGHAM, AL 352032707		2. OGRID Number 162928
		3. API Number 30-039-29987
4. Property Code 21996	5. Property Name SAN JUAN 32 5 UNIT	6. Well No. 116

7. Surface Location

UL - Lot	Section	Township	Range	Lot Idn	Feet From	N/S Line	Feet From	E/W Line	County
O	27	32N	06W	O	700	S	1430	E	RIO ARRIBA

8. Pool Information

BASIN FRUITLAND COAL (GAS)	71629
----------------------------	-------

Additional Well Information

9. Work Type New Well	10. Well Type GAS	11. Cable/Rotary	12. Lease Type Private	13. Ground Level Elevation 6135
14. Multiple N	15. Proposed Depth 5438	16. Formation Fruitland Coal	17. Contractor	18. Spud Date 7/21/2006
Depth to Ground water 100		Distance from nearest fresh water well > 1000		Distance to nearest surface water 200
Pit: Liner: Synthetic <input checked="" type="checkbox"/> 12 _____ miles thick Clay <input type="checkbox"/> Pit Volume: 2000 _____ bbls Drilling Method: Closed Loop System <input type="checkbox"/> Fresh Water <input checked="" type="checkbox"/> Brine <input type="checkbox"/> Diesel/Oil-based <input type="checkbox"/> Gas/Air <input type="checkbox"/>				

19. Proposed Casing and Cement Program

Type	Hole Size	Casing Type	Casing Weight/ft	Setting Depth	Sacks of Cement	Estimated TOC
Surf	12.25	9/625	32.3	200	125	
Intl	8.75	7	23	3943	680	
Prod	6.25	4.5	11.6	5423	0	
Prod	6.25	4.5	11.6	5438	0	

Casing/Cement Program: Additional Comments

--

Proposed Blowout Prevention Program

Type	Working Pressure	Test Pressure	Manufacturer
DoubleRam	300	1200	

I hereby certify that the information given above is true and complete to the best of my knowledge and belief.

I further certify that the drilling pit will be constructed according to NMOCD guidelines ☒ a general permit ☐ or an (attached) alternative OCD-approved plan ☐.

Printed Name: Vicki Donaghey
Title: Regulatory Analyst
Email Address: vdonaghey@energen.com
Date: 7-6-06 Phone: 505.325.4800

OIL CONSERVATION DIVISION

Approved By:

Title: DEPUTY OIL & GAS INSPECTOR, DIST. III

Approved Date:

Expiration Date:

JUL 06 2006

6 HOLD C104 FOR directional survey

DISTRICT I
1625 N. French Dr., Hobbs, N.M. 88240

State of New Mexico
Energy, Minerals & Natural Resources Department

Form C-102
Revised August 15, 2000

DISTRICT II
811 South First, Artesia, N.M. 88210

Submit to Appropriate District Office
State Lease - 4 Copies
Fee Lease - 3 Copies

DISTRICT III
1000 Rio Brazos Rd., Aztec, N.M. 87410

OIL CONSERVATION DIVISION

2040 South Pacheco
Santa Fe, NM 87505

DISTRICT IV
2040 South Pacheco, Santa Fe, NM 87505

☐ AMENDED REPORT

WELL LOCATION AND ACREAGE DEDICATION PLAT

*API Number 30-039-29987		*Pool Code 71629		*Pool Name BASIN FRUITLAND COAL	
*Property Code 21996		*Property Name 32-5 UNIT			*Well Number 116
*GRID No. 162928		*Operator Name ENERGEN RESOURCES CORPORATION			*Elevation 6135'

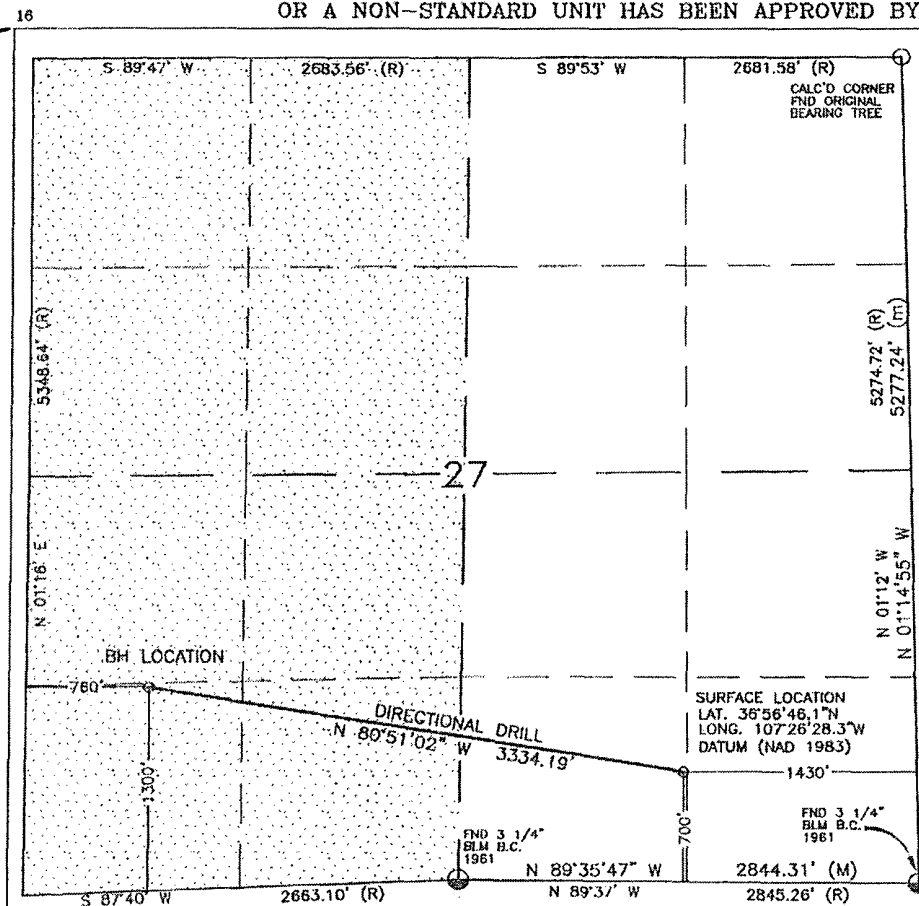
¹⁰ Surface Location

UL or lot no.	Section	Township	Range	Lot Idn	Feet from the	North/South line	Feet from the	East/West line	County
O	27	32N	6W		700'	SOUTH	1430'	EAST	RIO ARRIBA

¹¹ Bottom Hole Location If Different From Surface

UL or lot no.	Section	Township	Range	Lot Idn	Feet from the	North/South line	Feet from the	East/West line	County
M	27	32N	6W		1300'	SOUTH	760'	WEST	RIO ARRIBA
*Dedicated Acres 293.36 Acres - (W/2)			*Joint or Infill		*Consolidation Code		*Order No.		

NO ALLOWABLE WILL BE ASSIGNED TO THIS COMPLETION UNTIL ALL INTERESTS HAVE BEEN CONSOLIDATED
OR A NON-STANDARD UNIT HAS BEEN APPROVED BY THE DIVISION



17 OPERATOR CERTIFICATION

I hereby certify that the information contained herein
is true and complete to the best of my knowledge and
belief

Nathan Smith
Signature

Nathan Smith
Printed Name

Drilling Engineer
Title

7/11/06
Date

18 SURVEYOR CERTIFICATION

I hereby certify that the well location shown on this plat
was plotted from field notes of actual surveys made by
me or under my supervision, and that the same is true
and correct to the best of my belief.

DECEMBER 06, 2005

Date of Survey

Signature and Seal of Professional Surveyor:

DAVID R. RUSSELL
NEW MEXICO
REGISTERED PROFESSIONAL SURVEYOR
10201
Certificate Number

HOLD ON FOR directional
survey

Permit Comments

Operator: ENERGEN RESOURCES CORPORATION , 162928

Well: SAN JUAN 32 5 UNIT #116

API:

Created By	Comment	Comment Date
VDONAGHEY	Unable to select dedicated acreage. Spoke with Jane Proudly, told me to submit paper copy of APD and the Aztec office could correct the plat since I cannot do it on-line.	7/6/2006