

District I
PO Box 1980, Hobbs, NM 88241-1980
District II
811 South First, Artesia, NM 88210
District III
1000 Rio Brazos Rd., Aztec, NM 87410
District IV
2040 South Pacheco, Santa Fe, NM 87505

State of New Mexico
Energy, Minerals & Natural Resources Department

OIL CONSERVATION DIVISION
2040 South Pacheco
Santa Fe, NM 87505

Form C-101
Revised October 18, 1994

Instructions on back
Submit to Appropriate District Office
State Lease - 6 Copies
Fee Lease - 5 Copies

AMENDED REPORT

APPLICATION FOR PERMIT TO DRILL, RE-ENTER, DEEPEN, PLUGBACK, OR ADD A ZONE

¹ Operator Name and Address. Burlington Resources Oil & Gas Company PO Box 4289, Farmington, NM 87499		² OGRID Number 14538
⁴ Property Code 7454	⁵ Property Name San Juan 27-5 Unit	³ API Number 30-039-26535
		⁶ Well No. 90F

⁷ Surface Location

UL or lot no.	Section	Township	Range	Lot Idn	Feet from the	North/South line	Feet from the	East/West line	County
H	16	27N	5W		2275'	North	200'	East	Rio Arriba

⁸ Proposed Bottom Hole Location If Different From Surface

UL or lot no.	Section	Township	Range	Lot Idn	Feet from the	North/South line	Feet from the	East/West line	County
⁹ Proposed Pool 1 Basin Dakota					¹⁰ Proposed Pool 2				

¹¹ Work Type Code N	¹² Well Type Code G	¹³ Cable/Rotary Rotary	¹⁴ Lease Type Code State	¹⁵ Ground Level Elevation 6598' GR
¹⁶ Multiple N	¹⁷ Proposed Depth 7854'	¹⁸ Formation Dakota	¹⁹ Contractor N/a	²⁰ Spud Date N/a

²¹ Proposed Casing and Cement Program

Hole Size	Casing Size	Casing weight/foot	Setting Depth	Sacks of Cement	Estimated TOC
12 1/4"	9 5/8"	32.3#	200'	188 cu ft	Surface
8 3/4"	7"	20#	3658'	1101 cu ft	Surface
6 1/4"	4 1/2"	10.5#	3558-7854'	617 cu ft	3558'

²² Describe the proposed program. If this application is to DEEPEN or PLUG BACK give the data on the present productive zone and proposed new productive zone. Describe the blowout prevention program, if any. Use additional sheets if necessary.

11" 3000 psi minimum double gate BOP

Note: to facilitate higher hydraulic stimulation completion work, no liner hanger will be used. In its place, a long string of 4 1/2" casing will be run and cemented with a minimum of 100' of cement overlap between the 4 1/2" and 7" casing strings. After completion of the well, a 4 1/2" retrievable bridge plug will be set below the top of cement in the 4 1/2" x 7" overlap. The 4 1/2" casing will then be backed off above the top of cement in the 4 1/2" x 7" overlap and laid down. The 4 1/2" bridge plug will then be retrieved and the production tubing will be run to produce the well.

²³ I hereby certify that the information given above is true and complete to the best of my knowledge and belief.

Signature:

Printed name: Peggy Cole

Title: Regulatory/Compliance Supervisor

Date: 10-24-00

Phone: 505-326-9700

OIL CONSERVATION DIVISION

Approved by:

Title: DISTRICT OIL & GAS INSPECTOR, DIST. 03

Approval Date: JAN - 9 2001 Expiration Date: JAN - 9 2002

Conditions of Approval:
Attached ☐

WELD C104 FOR N3L

District I
PO Box 1980, Hobbs, NM 88241-1980

District II
PO Drawer DD, Artesia, NM 88211-0719

District III
1000 Rio Brazos Rd., Aztec, NM 87410

District IV
PO Box 2088, Santa Fe, NM 87504-2088

State of New Mexico
Energy, Minerals & Natural Resources Department

OIL CONSERVATION DIVISION
PO Box 2088
Santa Fe, NM 87504-2088

Form C-102
Revised February 21, 1994
Instructions on back
Submit to Appropriate District Office
State Lease - 4 Copies
Fee Lease - 3 Copies

☐ AMENDED REPORT

WELL LOCATION AND ACREAGE DEDICATION PLAT

1 API Number 30-039-26535		2 Pool Code 71599		3 Pool Name Basin Dakota		
4 Property Code 7454		5 Property Name SAN JUAN 27-5 UNIT			6 Well Number 90F	
7 OGRID No. 14538		8 Operator Name BURLINGTON RESOURCES OIL & GAS COMPANY			9 Elevation 6598'	

10 Surface Location

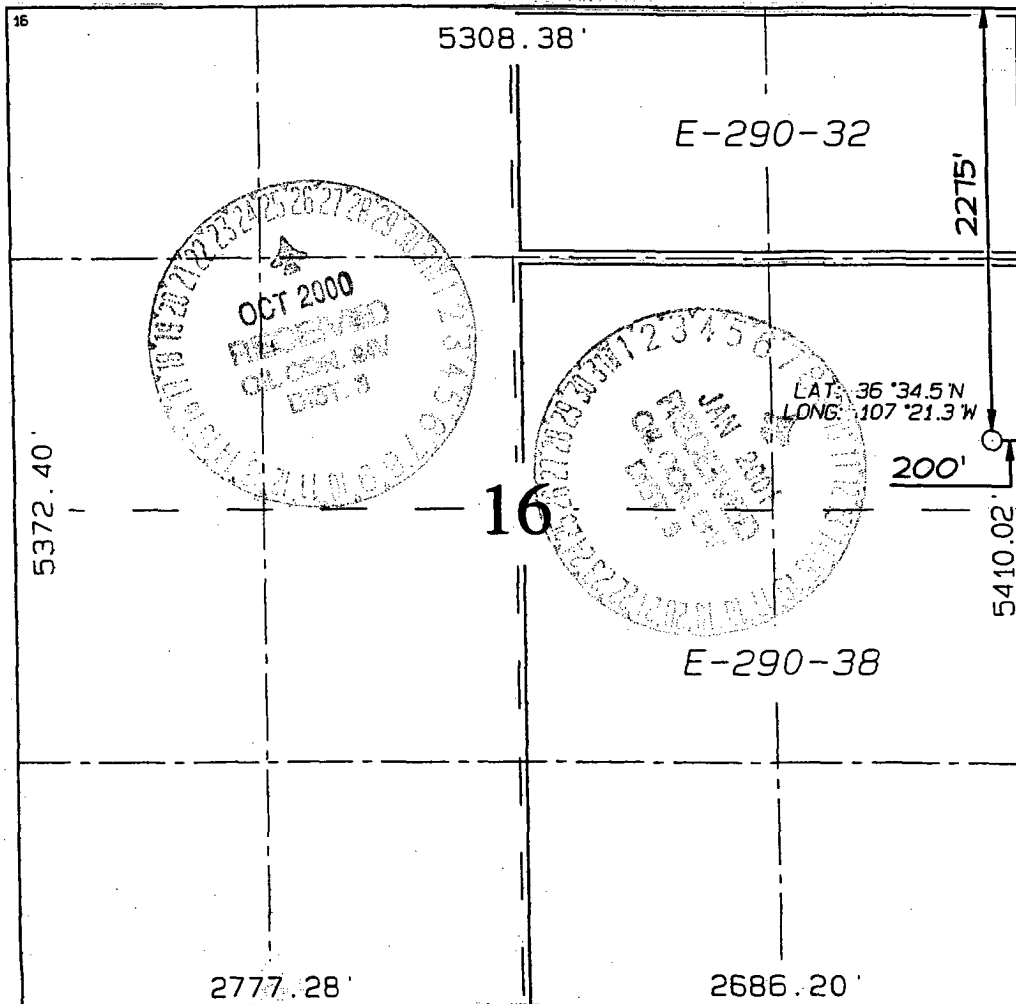
UL or lot no. H	Section 16	Township 27N	Range 5W	Lot Idn	Feet from the 2275	North/South line NORTH	Feet from the 200	East/West line EAST	County RIO ARriba
--------------------	---------------	-----------------	-------------	---------	-----------------------	---------------------------	----------------------	------------------------	----------------------

11 Bottom Hole Location If Different From Surface

UL or lot no.	Section	Township	Range	Lot Idn	Feet from the	North/South line	Feet from the	East/West line	County
---------------	---------	----------	-------	---------	---------------	------------------	---------------	----------------	--------

12 Dedicated Acres DK-E/320	13 Joint or Infill	14 Consolidation Code	15 Order No.
--------------------------------	--------------------	-----------------------	--------------

NO ALLOWABLE WILL BE ASSIGNED TO THIS COMPLETION UNTIL ALL INTERESTS HAVE BEEN CONSOLIDATED OR A NON-STANDARD UNIT HAS BEEN APPROVED BY THE DIVISION



17 OPERATOR CERTIFICATION

I hereby certify that the information contained herein is true and complete to the best of my knowledge and belief

Peggy Cole
Signature
Peggy Cole
Printed Name
Regulatory Supervisor
Title
10-23-00
Date

18 SURVEYOR CERTIFICATION

I hereby certify that the well location shown on this plat was plotted from field notes of actual surveys made by me or under my supervision, and that the same is true and correct to the best of my belief.

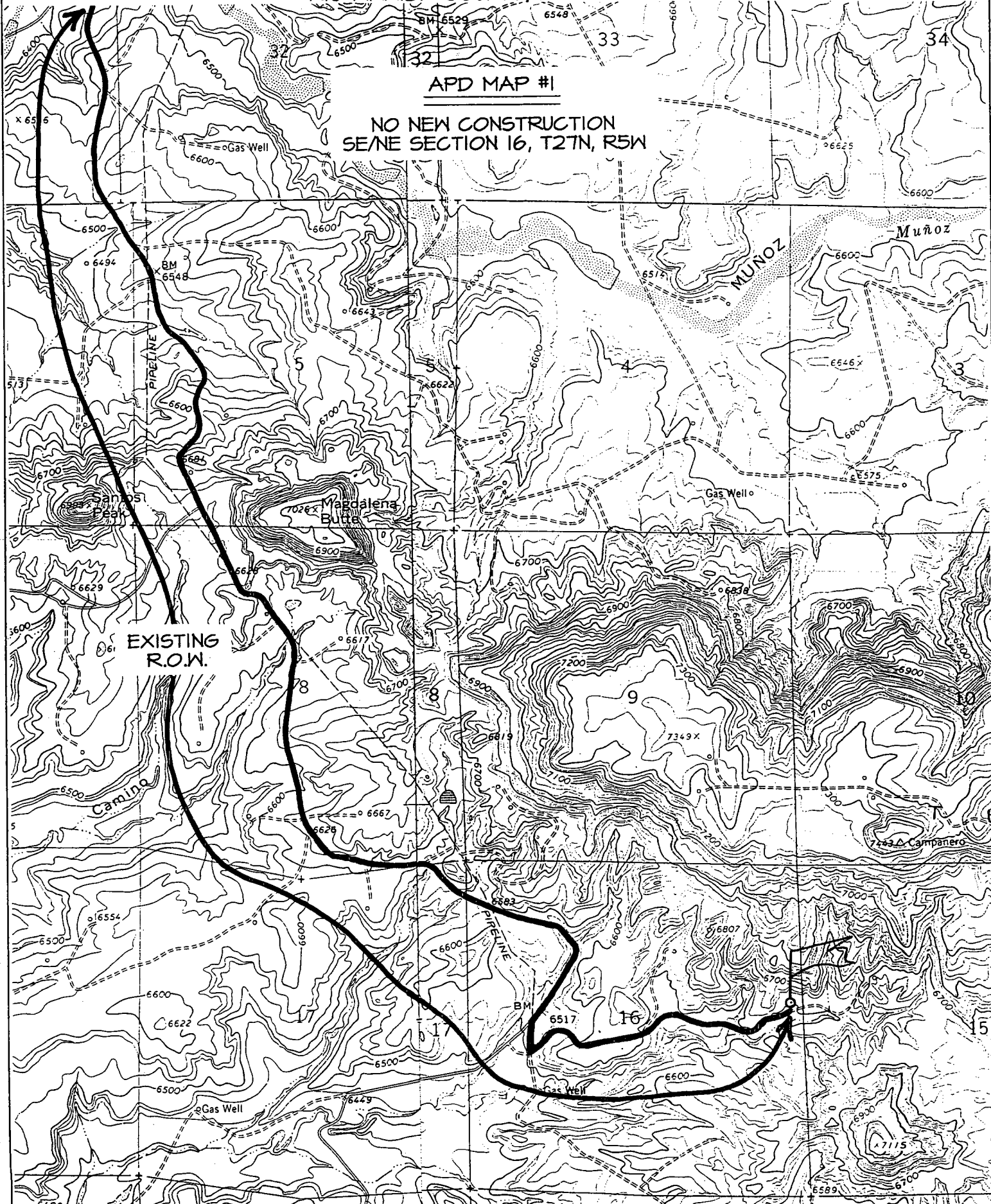
SEPTEMBER 19, 2000
Date of Survey
Signature and Seal of Professional Surveyor
NEALE C. EDWARDS
NEW MEXICO
6857
Certificate Number 6857

BURLINGTON RESOURCES OIL & GAS COMPANY S. JUAN 27-5 UNIT #90F

2275' FNL & 200' FEL, SECTION 16, T27N, R5W, N.M.P.M.
RIO ARriba COUNTY, NEW MEXICO

APD MAP #1

NO NEW CONSTRUCTION
SE/NE SECTION 16, T27N, R5W

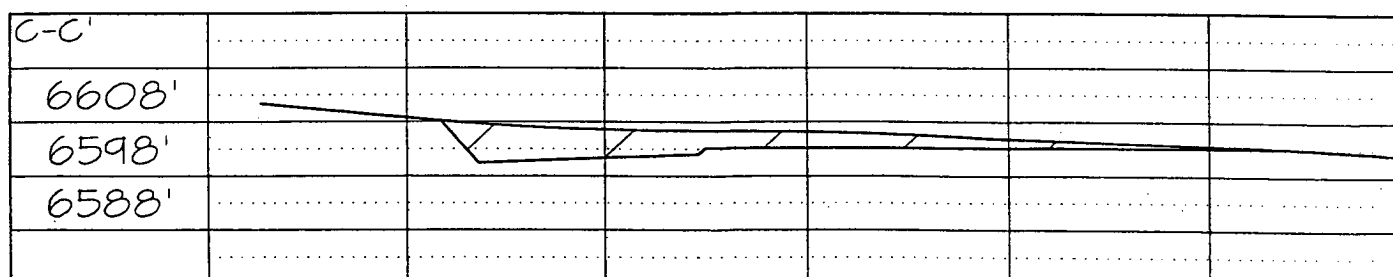
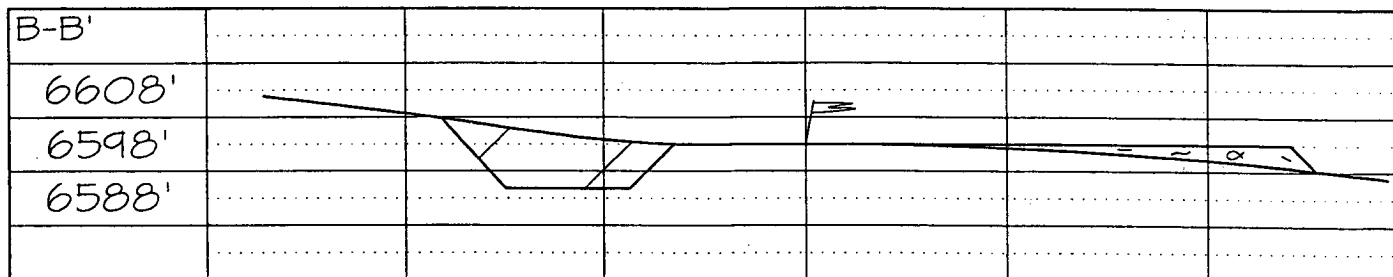


**BURLINGTON RESOURCES OIL & GAS COMPANY
SAN JUAN 27-5 UNIT #90F, 2275' FNL & 200' FEL
SECTION 16, T27N, R5W, NMPM, RIO ARriba COUNTY, NM
GROUND ELEVATION: 6598' DATE: SEPTEMBER 19, 2000**

LATITUDE: 36°34.5'
LONGITUDE: 107°21.3'

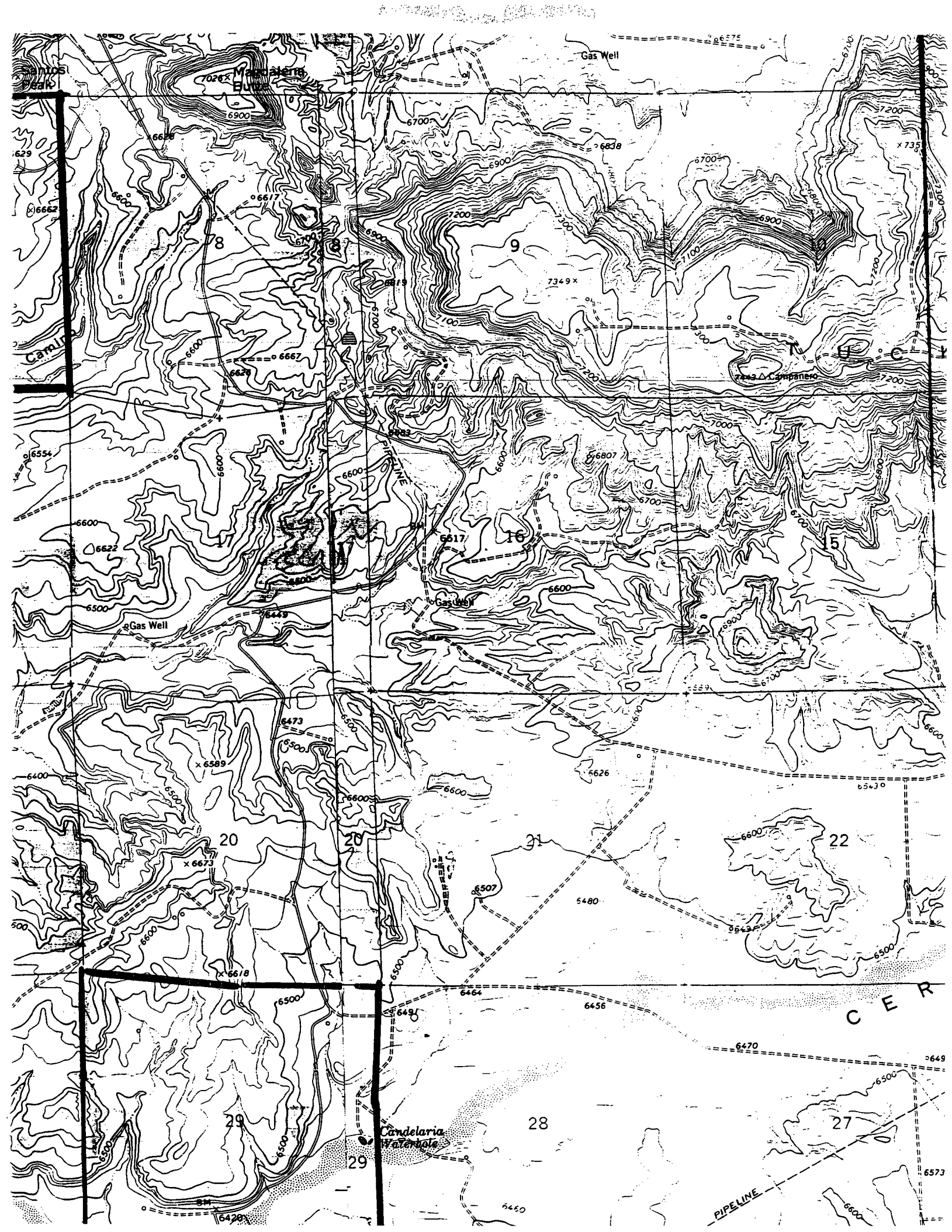


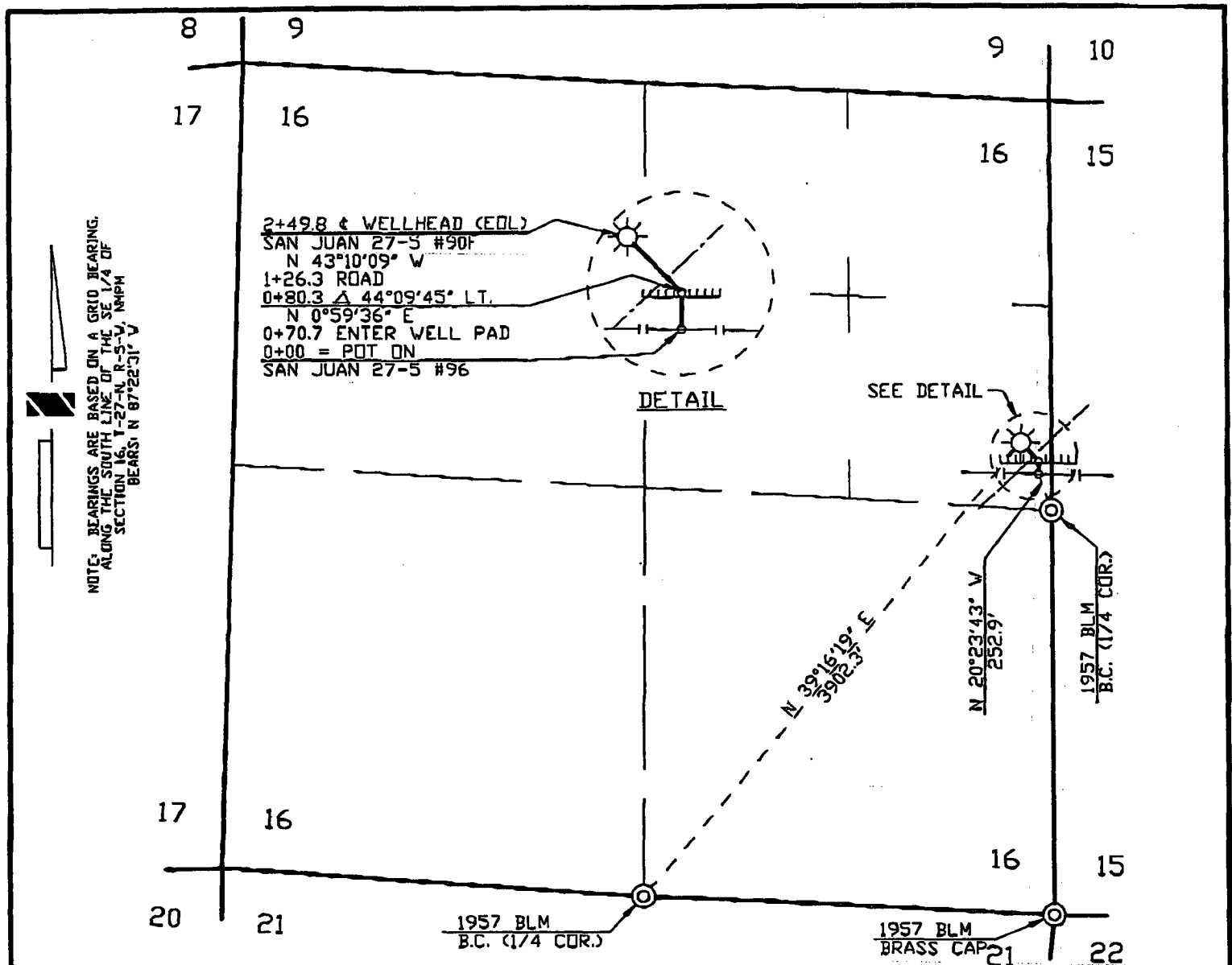
A-A'						
6608'						
6598'						
6588'						



Note: Contractor should call One-Call for location of any marked or unmarked buried pipelines or cables on well pad and/or access road at least two (2) working days prior to construction.







PIPE DATA

DIVERSHIP

REVISION

INFO

DRAFTING

BY

DATE

STATE: NEW MEXICO

COUNTY: RIO ARriba

WILLIAMS GAS PROCESSING

ONE OF THE WILLIAMS COMPANIES

R/W #: 04731

METER H:

SURVEYED: 10/6/00

DRAWN BY

SRB

10/11/00

CHECKED BY

PB

10/11/00

APPROVED BY

ENGINEER

BY

DATE

DESIGNED BY

SCALE: 1\"=1000'

SAN JUAN GATHERING SYSTEM
BRDG - SAN JUAN 27-5 #90F
0+00 = POT ON SAN JUAN 27-5 #96
(REF. DWG. 7L765.0-41-1)
SEC. 16, T-27-N, R-5-W, NMPM

DWG NO. 71-765.0-155-1

SHEET
1 OF 1
REV
1

Directions from the Intersection of US Hwy 550 & US Hwy 64 in Bloomfield, NM to

Burlington Resources Oil & Gas Company San Juan 27-5 Unit #90F

2275' FNL & 200' FEL, Section 16, T27N, R5W, NMPM, Rio Arriba County, NM

From the intersection of US Hwy 550 & US Hwy 64 in Bloomfield, NM, travel Easterly on US Hwy 64 for 36.8 miles to General American road just beyond Gobernador School;

Go right (Southerly) on General American road for 1.2 miles;

Go right (South-westerly) on General American road for 3.4 miles to "4-Corners" intersection;

Go straight (Southerly) on General American road for 1.1 miles;

Go straight (Southerly) for 4.1 miles;

Go left which is straight (Southerly) for 0.1 miles;

Go left (North-easterly) for 0.5 miles;

Go right (Easterly) for 0.5 miles to staked location on left-hand side of existing roadway.