

UNITED STATES
DEPARTMENT OF THE INTERIOR
BUREAU OF LAND MANAGEMENT

RECEIVED

APPLICATION FOR PERMIT TO DRILL, DEEPEN, OR PLUG BACK

1a. Type of Work DRILL	5. Lease Number NMSF081098 Unit Reporting Number 070 Farmington, NM
1b. Type of Well GAS	6. If Indian, All. or Tribe
2. Operator BURLINGTON RESOURCES Oil & Gas Company	7. Unit Agreement Name
3. Address & Phone No. of Operator PO Box 4289, Farmington, NM 87499 (505) 326-9700	8. Farm or Lease Name Riddle 9. Well Number 250S
4. Location of Well 1625' FSL, 1005' FWL Latitude 36° 50.2453'N, Longitude 107° 46.3816'W	10. Field, Pool, Wildcat Basin Fruitland Coal 11. Sec., Twn, Rge, Mer. (NMPM) L Sec.3, T-30-N, R-9-W API # 30-045-31798
14. Distance in Miles from Nearest Town 7 miles to Navajo City Post Office	12. County San Juan 13. State NM
15. Distance from Proposed Location to Nearest Property or Lease Line 1005'	17. Acres Assigned to Well 322.86 W/2
16. Acres in Lease	
18. Distance from Proposed Location to Nearest Well, Drig, Compl, or Applied for on this Lease 22'	
19. Proposed Depth 2909' 2815'	20. Rotary or Cable Tools Rotary
21. Elevations (DF, FT, GR, Etc.) 6051' GR	22. Approx. Date Work will Start
23. Proposed Casing and Cementing Program See Operations Plan attached	
24. Authorized by: <u>Peggy Case</u> Regulatory/Compliance Supervisor	Date <u>6-19-03</u>

PERMIT NO. _____
Original Signed: Stephen Mason

APPROVAL DATE AUG 08 2003

APPROVED BY _____

TITLE _____

DATE AUG 08 2003

Archaeological Report to be submitted

Threatened and Endangered Species Report to be submitted

NOTE: This format is issued in lieu of U.S. BLM Form 3160-3

Title 18 U.S.C. Section 1001, makes it a crime for any person knowingly and willfully to make to any department or agency of the United States any false, fictitious or fraudulent statements or presentations as to any matter within its jurisdiction.

This action is subject to technical and procedural review pursuant to 43 CFR 3165.3 and appeal pursuant to 43 CFR 3165.4

NMOC

DRILLING OPERATIONS AUTHORIZED ARE
SUBJECT TO COMPLIANCE WITH ATTACHED
"GENERAL REQUIREMENTS".

DISTRICT I
1625 N. French Dr., Hobbs, N.M. 88240

State of New Mexico
Energy, Minerals & Natural Resources Department

Form C-102
Revised August 15, 2000

DISTRICT II
811 South First, Artesia, N.M. 88210

DISTRICT III
1000 Rio Brazos Rd., Artec, N.M. 87410

DISTRICT IV
2040 South Pacheco, Santa Fe, NM 87505

OIL CONSERVATION DIVISION

2040 South Pacheco
Santa Fe, NM 87505

Submit to Appropriate District Office
State Lease - 4 Copies
Fee Lease - 3 Copies

☐ AMENDED REPORT

WELL LOCATION AND ACREAGE DEDICATION PLAT

¹ API Number 30-045- 31798	² Pool Code 71629	³ Pool Name Basin Fruitland Coal
⁴ Property Code 7424	⁵ Property Name RIDDLE	⁶ Well Number 250S
⁷ GRID No. 14538	⁸ Operator Name BURLINGTON RESOURCES OIL & GAS, INC.	⁹ Elevation 6051'

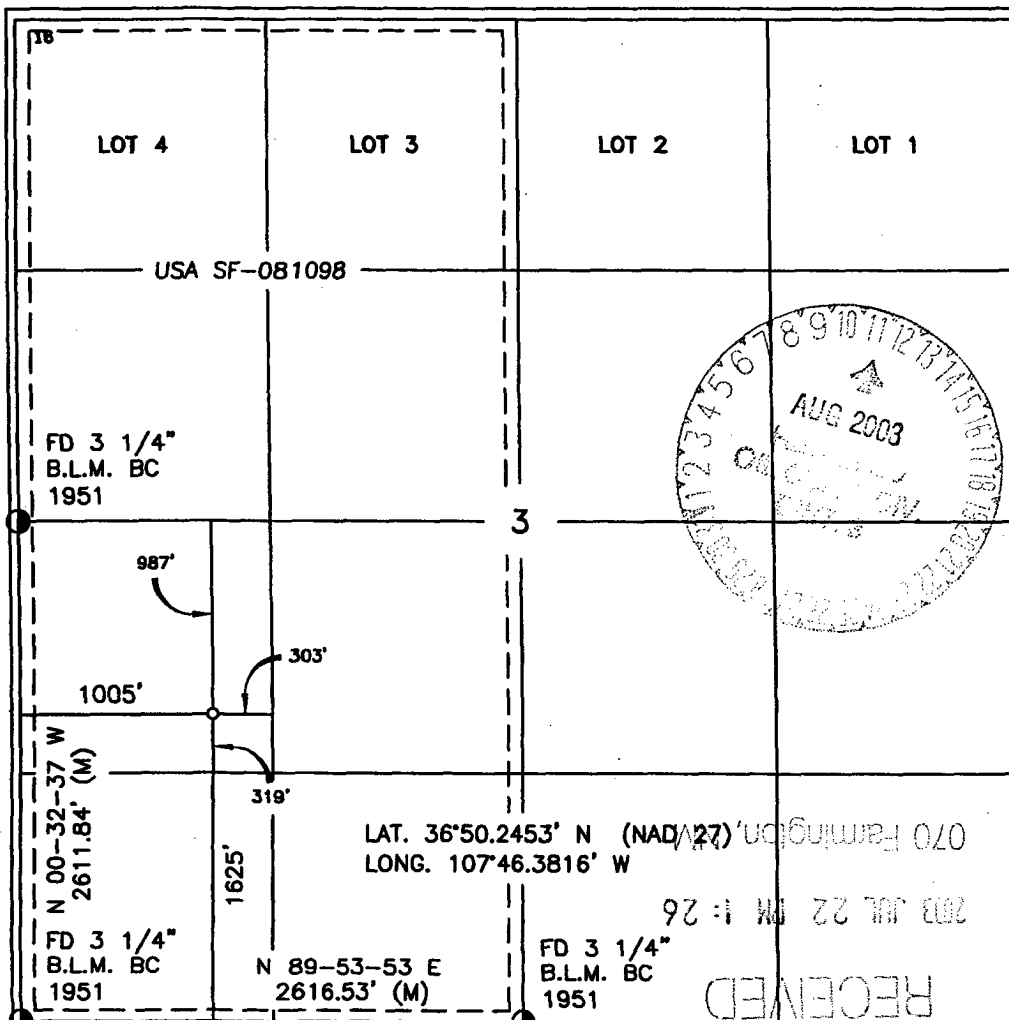
¹⁰ Surface Location

UL or lot no.	Section	Township	Range	Lot Idn	Feet from the	North/South line	Feet from the	East/West line	County
L	3	30-N	9-W		1625'	SOUTH	1005'	WEST	SAN JUAN

¹¹ Bottom Hole Location If Different From Surface

UL or lot no.	Section	Township	Range	Lot Idn	Feet from the	North/South line	Feet from the	East/West line	County
¹² Dedicated Acres W/322.86					¹³ Joint or Infill		¹⁴ Consolidation Code		¹⁵ Order No.

NO ALLOWABLE WILL BE ASSIGNED TO THIS COMPLETION UNTIL ALL INTERESTS HAVE BEEN CONSOLIDATED
OR A NON-STANDARD UNIT HAS BEEN APPROVED BY THE DIVISION



¹⁷ OPERATOR CERTIFICATION

I hereby certify that the information contained herein is true and complete to the best of my knowledge and belief

Peggy Cole
Signature
Peggy Cole
Printed Name
Regulatory Supervisor
Title
6-19-03
Date

¹⁸ SURVEYOR CERTIFICATION

I hereby certify that the well location shown on this plat was plotted from field notes of actual surveys made by me or under my supervision, and that the same is true and correct to the best of my belief.

2
DAVID A. JOHNSON
Date of Survey
Signature and Seal of Professional Surveyor:
14827
REGISTERED PROFESSIONAL SURVEYOR
14827
Certificate Number

UNITED STATES
DEPARTMENT OF THE INTERIOR
BUREAU OF LAND MANAGEMENT

Sundry Notices and Reports on Wells

RECEIVED

1. Type of Well
GAS

2003 AUG -5 PM 1:55

070 Farmington, NM

Lease Number
NMSF081098

6. If Indian, All. or
Tribe Name

7. Unit Agreement Name

2. Name of Operator

BURLINGTON

RESOURCES OIL & GAS COMPANY

3. Address & Phone No. of Operator

PO Box 4289, Farmington, NM 87499 (505) 326-9700

8. Well Name & Number
Riddle #250S

9. API Well No.
30-045-

4. Location of Well, Footage, Sec., T, R, M

1625' FSL, 1005' FWL, Sec.3, T-30-N, R-9-W, NMPM

10. Field and Pool
Basin Fruitland Coal

11. County and State
San Juan Co, NM

12. CHECK APPROPRIATE BOX TO INDICATE NATURE OF NOTICE, REPORT, OTHER DATA

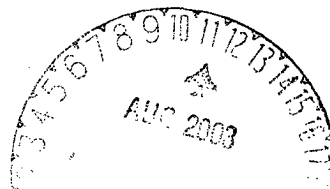
Type of Submission

Type of Action

☒ Notice of Intent☐ Abandonment☒ Change of Plans☐ Subsequent Report☐ Recompletion☐ New Construction☐ Final Abandonment☐ Plugging Back☐ Non-Routine Fracturing☐ Casing Repair☐ Water Shut off☐ Altering Casing☐ Conversion to Injection☐ Other -

13. Describe Proposed or Completed Operations

Per the request of the BLM, the sump total depth for the subject well has been denied. The total depth has been revised to 2815'.



14. I hereby certify that the foregoing is true and correct.

Signed Stephen Mason Title Regulatory Supervisor Date 8/4/03

TLW

(This space for Federal or State Office use)

APPROVED BY Original Signed: Stephen Mason Title _____

Date AUG 08 2003

CONDITION OF APPROVAL, if any:

Title 18 U.S.C. Section 1001, makes it a crime for any person knowingly and willfully to make to any department or agency of the United States any false, fictitious or fraudulent statements or representations as to any matter within its jurisdiction.

NMOC

OPERATIONS PLAN

Well Name: Riddle #250S
Location: 1625' FSL, 1005' FWL Section 3, T-30-N, R-9-W
Latitude 36° 50.2453' N, Longitude 107° 46.3816' W
San Juan County, NM
Formation: Basin Fruitland Coal
Elevation: 6051' GR

Formation:	Top	Bottom	Contents
Surface	San Jose	1519'	
Ojo Alamo	1519'	1665'	aquifer
Kirtland	1665'	2207'	
Fruitland	2207'	2606'	
Intermediate TD	2556'		
Fruitland Coal	2606'	2809'	gas
B/Basal Coal	2809'	2817'	gas
Pictured Cliffs	2817'	2909'	
Total Depth	2909'		

Logging Program: none

Mudlog: with Softrock from 7" to TD

Coring Program: none

Mud Program:

Interval	Type	Weight	Vis.	Fluid Loss
0- 120'	Spud	8.4-9.0	40-50	no control
120-2556'	Non-dispersed	8.4-9.0	30-60	no control
2556-2909'	Air/Mist			

Casing Program (as listed, the equivalent, or better):

Hole Size	Depth Interval	Csg. Size	Wt.	Grade
12 1/4"	0' - 120'	9 5/8"	32.3#	H-40
8 3/4"	0' - 2556'	7"	20.0#	J-55
6 1/4"	2556' - 2909'	open hole		

Alternate Casing Program (as listed, the equivalent, or better):

Hole Size	Depth Interval	Csg. Size	Wt.	Grade
12 1/4"	0' - 120'	9 5/8"	32.3#	H-40
8 3/4"	0' - 2556'	7"	20.0#	J-55
6 1/4"	2506' - 2909'	5 1/2"	15.5#	J-55

Tubing Program:

0' - 2909'	2 3/8"	4.7#	J-55
------------	--------	------	------

Float Equipment: 9 5/8" surface casing - saw tooth guide shoe. Centralizers will be run in accordance with Onshore Order #2.

7" intermediate casing - guide shoe and self-fill float collar. Standard centralizers run every other joint above shoe. Two turbolizing type centralizers - one below and one into the base of the Ojo Alamo @ 1665'. Standard centralizers thereafter every fourth joint up to the base of the surface pipe.

Wellhead Equipment: 9 5/8" x 7" x 2 3/8" x 11" 2000 psi xmas tree assembly.

Cementing:

9 5/8" surface casing - cement with 32 sx Class A, B Portland Type I, II cement (38 cu.ft. of slurry, bring cement to surface through 3/4" line) or equivalent. WOC 24 hours for pre-set holes or 8 hours for conventionally set holes before pressure testing or drilling out from under surface casing.

7" intermediate casing - lead w/212 sacks Premium Lite with 3% calcium chloride, 5 pps LCM-1, and 1/4#/sack flocele, 0.4% FL-52, & 0.4% SMS. Tail with 90 sacks Type III cmt with 1% calcium chloride, 1/4#/sack flocele and 0.2% FL-52 (576 cu.ft., 50% excess to circulate to surface).

5 1/2" liner - will not be cemented if run.

Note: If open hole logs are run, cement volumes will be based on 25% excess over caliper volumes.

BOP and tests:

Surface to intermediate TD - 11" 2000 psi (minimum) double gate BOP stack (Reference Figure #1). Prior to drilling out surface casing, test rams to 600#/30 min.

Intermediate TD to Total Depth - 7 1/6" 2000 psi (minimum) double gate BOP stack (Reference Figure #2). Prior to drilling out intermediate casing, test blind rams and casing to 1500 psi for 30 minutes; all pipe rams and casing to 1500 psi for 30 minutes each.

From surface to TD - choke manifold (Reference Figure #3).

Pipe rams will be actuated at least once each day and blind rams actuated once each trip to test proper functioning. An upper kelly cock valve with handle and drill string safety valves to fit each drill string will be maintained and available on the rig floor.

Additional information:

- * The Fruitland Coal formation will be completed.
- * Anticipated pore pressure for the Fruitland is less than 500 psi.
- * This gas is dedicated.
- * The west half of section 3 is dedicated to the Fruitland Coal.

Date: 6/23/2003

Drilling Engineer: Jennifer McCarthy