

UNITED STATES
DEPARTMENT OF THE INTERIOR
BUREAU OF LAND MANAGEMENT

APPLICATION FOR PERMIT TO DRILL, DEEPEN, OR PLUG BACK

2006 APR 17 PM 1 35

1a. Type of Work DRILL	5. Lease Number NMSF-078945
1b. Type of Well GAS	Unit Reporting Number NMNM-078417D-FC
2. Operator BURLINGTON RESOURCES Oil & Gas Company, LP	6. If Indian, All. or Tribe
3. Address & Phone No. of Operator PO Box 4289, Farmington, NM 87499 (505) 326-9700	7. Unit Agreement Name
4. Location of Well Unit J (NWSE), 1715' FSL & 1725' FEL, Latitude 36° 41.6572'N Longitude 107° 33.2735'W	8. Farm or Lease Name San Juan 29-7 Unit 9. Well Number 538 10. Field, Pool, Wildcat Basin FC / Blanco PC 11. Sec., Twn, Rge, Mer. (NMPM) Sec. 27, T29N, R07W API # 30-039-29880
14. Distance in Miles from Nearest Town	12. County Rio Arriba 13. State NM
15. Distance from Proposed Location to Nearest Property or Lease Line 1715'	
16. Acres in Lease	17. Acres Assigned to Well FC - 320 E/2 & PC - 160 SE/4
18. Distance from Proposed Location to Nearest Well, Drlg, Compl, or Applied for on this Lease Twinned w/SJ 29-7 Unit #53A	
19. Proposed Depth 3819'	20. Rotary or Cable Tools Rotary
21. Elevations (DF, FT, GR, Etc.) 6829' GL	22. Approx. Date Work will Start
23. Proposed Casing and Cementing Program See Operations Plan attached	
24. Authorized by: <u>Patsy Chugustin</u> Sr. Regulatory Specialist	Date <u>4/17/06</u>

PERMIT NO.

APPROVAL DATE

APPROVED BY

TITLE

DATE

Archaeological Report attached

Threatened and Endangered Species Report attached

NOTE: This format is issued in lieu of U.S. BLM Form 3160-3

Title 18 U.S.C. Section 1001, makes it a crime for any person knowingly and willfully to make to any department or agency of the United States any false, fictitious or fraudulent statements or presentations as to any matter within its jurisdiction.

Not an HPA FC Well

NMOC

This action is subject to the BLM and procedural requirements of 43 CFR 3165.3 and appeal procedures at 43 CFR 3165.4

RECEIVED
BUREAU OF LAND MANAGEMENT
GENERAL REGISTRATION

DISTRICT I
1625 N. French Dr., Hobbs, N.M. 88240

DISTRICT II
1301 W. Grand Ave., Artesia, N.M. 88210

DISTRICT III
1000 Rio Brazos Rd., Aztec, N.M. 87410

DISTRICT IV
1220 South St. Francis Dr., Santa Fe, NM 87505

State of New Mexico
Energy, Minerals & Natural Resources Department

OIL CONSERVATION DIVISION

1220 South St. Francis Dr.
Santa Fe, NM 87505

2006 APR 17 PM 1 35

RECEIVED
070 FARMINGTON NM
2006 APR 17 PM 1 35

Form C-102

Revised October 12, 2005

Submit to Appropriate District Office

State Lease - 4 Copies

Fee Lease - 3 Copies

RECEIVED

070 FARMINGTON NM

☐ AMENDED REPORT

WELL LOCATION AND ACREAGE DEDICATION PLAT

¹ API Number 30-039- 29880	² Pool Code 72359 / 71629	³ Pool Name Blanco Pictured Cliffs / Basin Fruitland Coal
⁴ Property Code 7465	⁵ Property Name SAN JUAN 29-7 UNIT	⁶ Well Number 53S
⁷ GRID No. 14538	⁸ Operator Name BURLINGTON RESOURCES OIL & GAS COMPANY LP	⁹ Elevation 6829

¹⁰ Surface Location

UL or lot no.	Section	Township	Range	Lot Idn	Feet from the	North/South line	Feet from the	East/West line	County
J	27	29-N	7-W		1715	SOUTH	1725	EAST	RIO ARRIBA

¹¹ Bottom Hole Location If Different From Surface

UL or lot no.	Section	Township	Range	Lot Idn	Feet from the	North/South line	Feet from the	East/West line	County
J									
¹² Dedicated Acres PC- 160.0 ac SE/4 FC 320.0 ac E2		¹³ Joint or Infill		¹⁴ Consolidation Code		¹⁵ Order No.			

NO ALLOWABLE WILL BE ASSIGNED TO THIS COMPLETION UNTIL ALL INTERESTS HAVE BEEN CONSOLIDATED
OR A NON-STANDARD UNIT HAS BEEN APPROVED BY THE DIVISION

16

		FD 2 1/2" BC 1913 GLO		¹⁷ OPERATOR CERTIFICATION	
		USA SF-078424		I hereby certify that the information contained herein is true and complete to the best of my knowledge and belief, and that this organization either owns a working interest or unleased mineral interest in the land including the proposed bottom hole location or has a right to drill this well at this location pursuant to a contract with an owner of such a mineral or working interest, or to a voluntary pooling agreement or a compulsory pooling order heretofore entered by the division.	
				Signature <u>Patsy Clugston</u> Date _____	
				Printed Name <u>Patsy Clugston</u>	
27		USA SF-078945		¹⁸ SURVEYOR CERTIFICATION	
LAT: 36.69429' N. (NAD 83) LONG: 107.55516' W. (NAD 83) LAT: 36°41.6572' N. (NAD 27) LONG: 107°33.2735' W. (NAD 27)		1725'		I hereby certify that the well location shown on this plat was plotted from field notes of actual surveys made by me or under my supervision, and that the same is true and correct to the best of my belief.	
		1715'		Signature <u>JOHN A. VUKOBRA</u> Seal of Professional Surveyor: 14831	
FD 2 1/2" BC 1913 GLO		S 89°44'03" W 2653.53' (C)		LOPEZ, JUAN I ETUX CALC'D COR. BY DBL PROP.	
		USA SF-078945		Certificate Number <u>14831</u>	

Office

District I

1625 N. French Dr., Hobbs, NM 88240

District II

1301 W. Grand Ave., Artesia, NM 88210

District III

1000 Rio Brazos Rd., Aztec, NM 87410

District IV

1220 S. St. Francis Dr., Santa Fe, NM 87505

State of New Mexico

Energy, Minerals and Natural Resources

Form C-103

May 27, 2004

OIL CONSERVATION DIVISION

1220 South St. Francis Dr.
Santa Fe, NM 87505

WELL API NO.

30-039- 29880

5. Indicate Type of Lease

STATE ☐FEE ☐

6. State Oil & Gas Lease No.

7. Lease Name or Unit Agreement Name

San Juan 29-7 Unit

8. Well Number

53S

9. OGRID Number

14538

10. Pool name or Wildcat

Basin Fruitland Coal / Blanco Pictured Cliffs

SUNDRY NOTICES AND REPORTS ON WELLS
(DO NOT USE THIS FORM FOR PROPOSALS TO DRILL OR TO DEEPEN OR PLUG BACK TO A DIFFERENT RESERVOIR. USE "APPLICATION FOR PERMIT" (FORM C-101) FOR SUCH PROPOSALS.)

1. Type of Well:

Oil Well ☐Gas Well ☒

Other

2. Name of Operator

BURLINGTON RESOURCES OIL & GAS COMPANY LP

3. Address of Operator

3401 E. 30TH STREET, FARMINGTON, NM 87402

4. Well Location

Unit Letter J : 1715' feet from the South line and 1725' feet from the East line
 Section 28 Township 29N Rng 7W NMPM County Rio Arriba

11. Elevation (Show whether DR, RKB, RT, GR, etc.)

6829' GL

Pit or Below-grade Tank Application

☐ or Closure ☐Pit type New Drill Depth to Groundwater >100' Distance from nearest fresh water well>1000' Distance from nearest surface water >1000'

Pit Liner Thickness:

n/a

mil

Below-Grade Tank:

Volume

bbls;

Construction Material

12. Check Appropriate Box to Indicate Nature of Notice, Report or Other Data

NOTICE OF INTENTION TO:

PERFORM REMEDIAL WORK ☐PLUG AND ABANDON ☐TEMPORARILY ABANDON ☐CHANGE PLANS ☐PULL OR ALTER CASING ☐MULTIPLE COMPL ☐

SUBSEQUENT REPORT OF:

REMEDIAL WORK ☐ALTERING CASING ☐COMMENCE DRILLING OPNS. ☐P AND A ☐CASING/CEMENT JOB ☐

OTHER:

New Drill ☒OTHER: ☐

13. Describe proposed or completed operations. (Clearly state all pertinent details, and give pertinent dates, including estimated date of starting any proposed work). SEE RULE 1103. For Multiple Completions: Attach wellbore diagram of proposed completion or recompletion.

New Drill, Unlined:

Burlington Resources proposes to construct a new drilling pit and an associated vent/flare pit. Based on Burlington's interpretation of the Ecosphere's risk ranking criteria, the new drilling pit and vent/flare pit will be an unlined pit as detailed in Burlington's Revised Drilling / Workover Pit Construction / Operation Procedures dated November 11, 2004 on file at the NMOCD office. A portion of the vent/flare pit will be designed to manage fluids, and that portion will be unlined, as per the risk ranking criteria. Burlington Resources anticipates closing these pits according to the Drilling / Workover Pit Closure Procedure dated August 2, 2004 on file at the NMOCD office.

I hereby certify that the information above is true and complete to the best of my knowledge and belief. I further certify that any pit or below-grade tank has been/will be constructed or closed according to NMOCD guidelines ☐, a general permit ☒ or an (attached) alternative OCD-approved plan ☐.

SIGNATURE

Patsy Clugston

TITLE

Sr. Regulatory Specialist

DATE

4/17/2006

Type or print name

Patsy Clugston

E-mail address:

pclugston@br-inc.com

Telephone No.

505-326-9518

For State Use Only

APPROVED BY

[Signature]

TITLE

DEPUTY OIL & GAS INSPECTOR, DIST. A

DATE

SEP 13 2006

Conditions of Approval (if any):

BURLINGTON RESOURCES OIL & GAS COMPANY LP

SAN JUAN 29-7 UNIT No. 53S, 1715 FSL 1725 FEL

SECTION 27, T-29-N, R-7-W, N.M.P.M., RIO ARriba COUNTY, NEW MEXICO

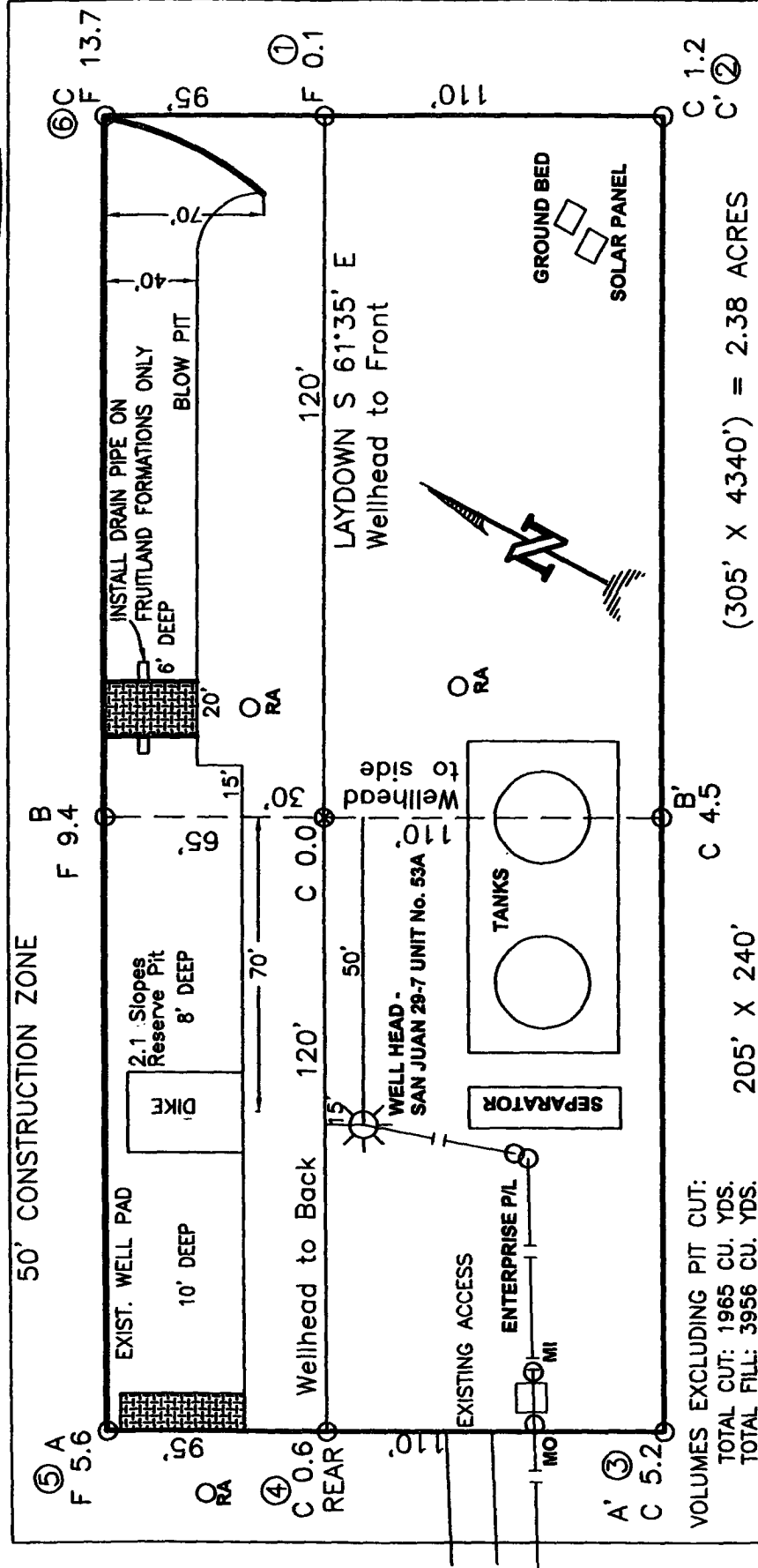
GROUND ELEVATION: 6829, DATE: FEBRUARY 28, 2006

NAD 83

LAT. = 36.69429° N
LONG. = 107.55516° W

NAD 27

LAT. = 36°41.6572' N
LONG. = 107°33.2735' W



RESERVE PIT DIKE: TO BE 8' ABOVE DEEP SIDE (OVERFLOW - 3' WIDE AND 1' ABOVE SHALLOW SIDE).
BLOW PIT: OVERFLOW PIPE HALFWAY BETWEEN TOP AND BOTTOM AND TO EXTEND OVER PLASTIC LINER AND INTO BLOW PIT.

NOTE: DAGGETT ENTERPRISES, INC. IS NOT LIABLE FOR UNDERGROUND UTILITIES OR PIPELINES. NEW MEXICO ONE CALL TO BE NOTIFIED 48 HOURS PRIOR TO EXCAVATION OR CONSTRUCTION.

NOTE: ESTIMATED VOLUMES CALCULATED BY AVERAGE END AREA AT CROSS-SECTION SHOWN

NOTE: CONTRACTOR SHOULD CALL ONE-CALL FOR LOCATION OF ANY MARKED OR UNMARKED BURIED PIPELINES OR CABLES ON WELL PAD AND OR ACCESS ROAD AT LEAST TWO (2) WORKING DAYS PRIOR TO CONSTRUCTION.



Daggett Enterprises, Inc.
Surveying and Oil Field Services
P. O. Box 15068 • Farmington, NM 87401
Phone (505) 326-1772 • Fax (505) 326-8019
NEW MEXICO L.S. 14831

DATE: 03/07/06
DRAWN BY: A.G.
CHECKED BY: B.R.

BURLINGTON RESOURCES OIL & GAS COMPANY LP

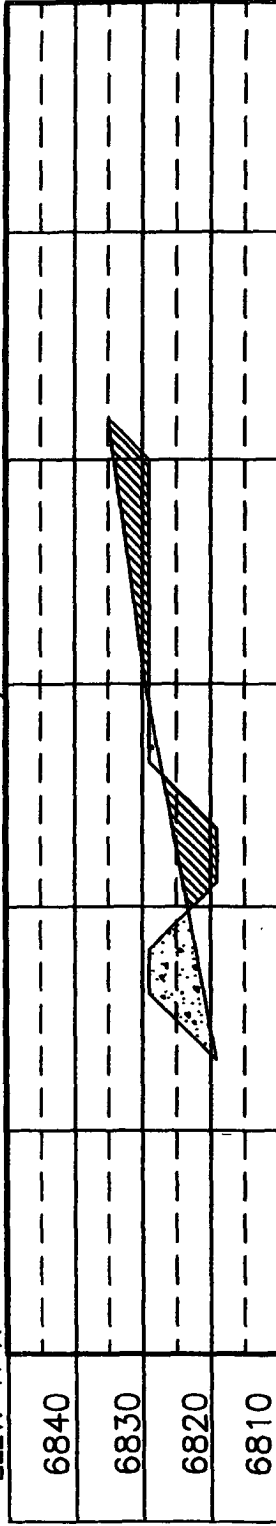
SAN JUAN 29-7 UNIT No. 53S, 1715 FSL 1725 FEL

SECTION 27, T-29-N, R-7-W, N.M.P.M., RIO ARriba COUNTY, NEW MEXICO

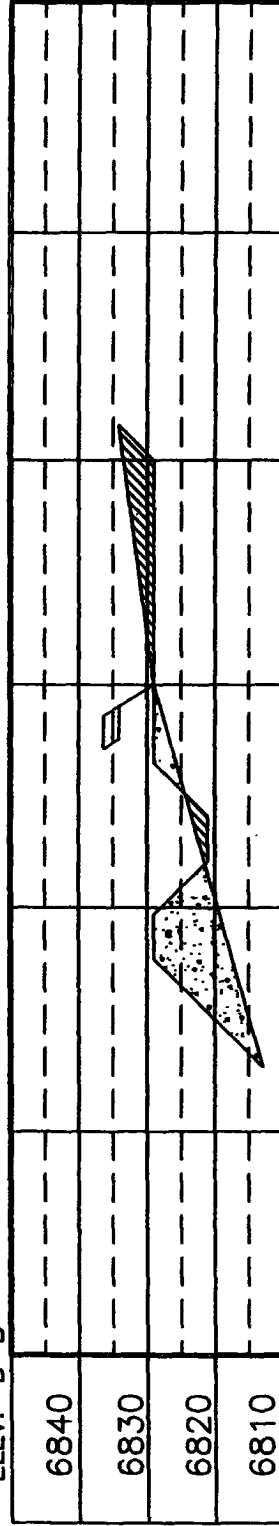
GROUND ELEVATION: 6829, DATE: FEBRUARY 28, 2006

NAD 83
LAT. = 36.69429° N
LONG. = 107.55516° W
NAD 27
LAT. = 36°41.6572' N
LONG. = 107°33.2735' W

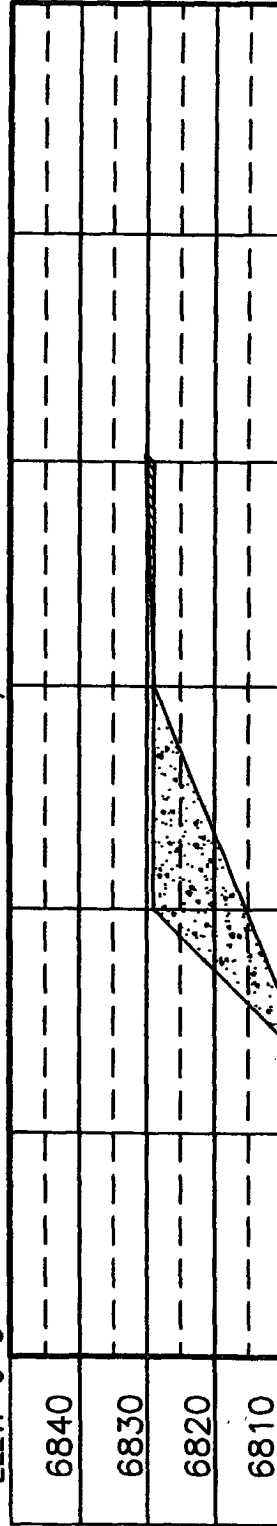
ELEV. A-A' C/L



ELEV. B-B' C/L



ELEV. C-C' C/L



NOTE: DAGGETT ENTERPRISES, INC. IS NOT LIABLE FOR UNDERGROUND UTILITIES OR PIPELINES. NEW MEXICO ONE CALL TO BE NOTIFIED 48 HOURS PRIOR TO EXCAVATION OR CONSTRUCTION.

NOTE: CONTRACTOR SHOULD CALL ONE-CALL FOR LOCATION OF ANY MARKED OR UNMARKED BURIED PIPELINES OR CABLES ON WELL PAD AND OR ACCESS ROAD AT LEAST TWO (2) WORKING DAYS PRIOR TO CONSTRUCTION.



Daggett Enterprises, Inc.
Surveying and Oil Field Services
P. O. Box 15088 • Farmington, NM 87401
Phone (505) 328-1772 • Fax (505) 328-8019
NEW MEXICO L.S. 14831

DATE: 03/07/06
DRAWN BY: BRG27
CHECKED BY: BRG27

OPERATIONS PLAN

Well Name: San Juan 29-7 Unit #53S
Location: Unit J (NWSE), 1715' FSL & 1725' FEL, Section 27, T29N, R7W
 Rio Arriba County, New Mexico
 Latitude 36° 41.6572'N Longitude 107° 33.2735' W
Formation: Basin Fruitland Coal / Blanco Pictured Cliffs
Elevation: 6829' GR

Formation:	Top	Bottom	Contents
Ojo Alamo	2649'	2832'	aquifer
Kirtland	2832'	3358'	gas
T/Fruitland Coal	3358'		gas
Pictured Cliffs	3619'		
Total Depth	3819'		

Logging Program: None

Mud Program:

<u>Interval</u>	<u>Type</u>	<u>Weight</u>	<u>Vis. Fluid Loss</u>
0- 120'	Spud/Air/Air Mist	8.4-8.9	40-50 no control
120-3819'	Non-dispersed	8.4-9.5	30-60 no control

Casing Program:

<u>Hole Size</u>	<u>Depth Interval</u>	<u>Csg.Size</u>	<u>Wt.</u>	<u>Grade</u>
8 $\frac{3}{4}$ "	0 - 120'	7"	20.0#	J-55
6 $\frac{3}{4}$ "	0 - 3819'	4 1/2"	10.5#	J/K-55

Tubing Program:

0 - 3819'	2 3/8"	4.7#	J-55
-----------	--------	------	------

Float Equipment: 7" surface casing - guide shoe. Centralizers will be run in accordance with Onshore Order #2.

4 1/2" production casing - float shoe and float collar on bottom. Centralizers run every third joint above shoe to the base of the Ojo Alamo @ 2832'. Two turbolizing type centralizers - one below and one into the base of the Ojo Alamo @ 2832'. Standard centralizers thereafter every fourth joint up to the base of the surface pipe.

Wellhead Equipment: 7" x 4 1/2" x 2 3/8" x 11" 2000 psi xmas tree assembly.

April 17, 2006

Cementing:

7" surface casing Pre-Set Drilled - Cement with Type I, II cement with 20% flyash mixed at 14.5 ppg, 1.28 cu ft per sack yield. (Bring cement to surface). Wait on cement for 24 hours for pre-set holes before pressure testing or drilling out from under surface.

7" surface casing - Cement with 42 sx Type III cement with 0.25 pps Celloflake, 3% CaCl. (54 cu ft of slurry @ 1.28 yield). 200% excess, bring cement to surface. Wait on cement for 8 hrs for conventionally set holes before pressure testing or drilling out from under surface.
WOC until cement establishes 250 psi compressive strength prior to NU of BOPE.

4 1/2" production casing - Cement with 217 sx (463 cu ft of slurry @ 2.13 yield) Premium Lite with 3% calcium chloride, 5 pps LCM-1, and 1/4#/sack celloflake, 0.4% FL-52, & 0.4% SMS. Tail with 90 sacks (124 cu ft of slurry @ 1.38 yield) Type III cmt with 1% calcium chloride, 1/4#/sack Celloflake and 0.2% FL-52. Total of 587 cf - 50% excess to circulate to surface.

BOP and tests:

Surface to TD - 11" 2000 psi (minimum double gate BOP stack (Reference Figure #1 and #2). Prior to drilling out surface casing, test rams to 600 psi/30 min.

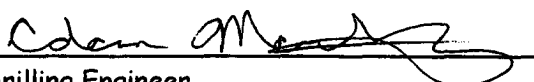
Completion - 6" 2000 psi (minimum) double gate BOP stack (Reference Figure #2). Prior to completion operations, test rams and casing to 1500 psi/30 min.

From surface to TD - choke manifold (Reference Figure #3).

Pipe rams will be actuated at least once each day and blind rams actuated once each trip to test proper functioning. An upper kelly cock valve with handle and drill string safety valves to fit each drill string will be maintained and available on the rig floor.

Additional information:

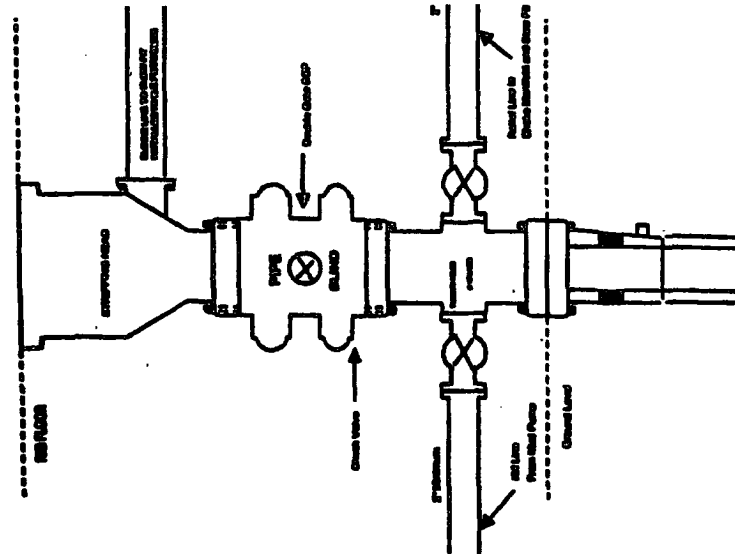
- * The Fruitland Coal formation and Pictured Cliffs will be completed.
- * Anticipated pore pressure for the Fruitland Coal is 600 - 700 psi.
- * This gas is dedicated.
- * The east half of the section is dedicated to the FC and the SE/4 is dedicated to the PC for this well.
- * New casing will be utilized.
- * Pipe movement (either rotation or reciprocation) will be done if hole conditions permit.


Drilling Engineer

4/17/2006
Date

BURLINGTON RESOURCES

Completion/Workover Rig
BOP Configuration
2,000 psi System



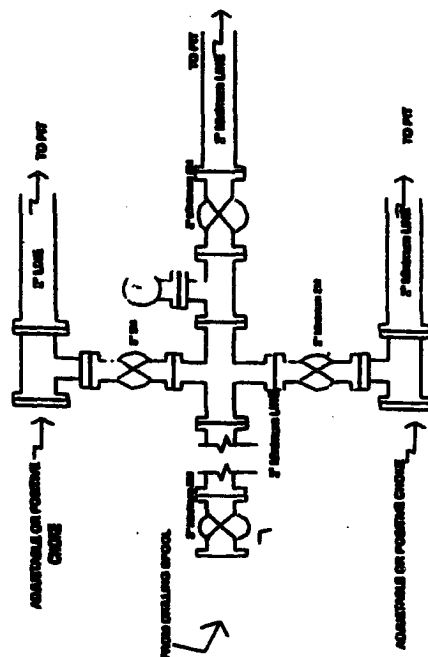
Minimum BOP installation for all Completion/Workover Operations. 7-1/16" bore, 2000 psi minimum working pressure double gate BOP to be equipped with blind and pipe rams. A sheering head to be installed on the top of the BOP. All BOP equipment is 2000 psi working pressure or greater excluding 600 psi sheering head.

Figure #2

4-20-01

BURLINGTON RESOURCES

Drilling Rig
Choke Manifold Configuration
2000 psi System



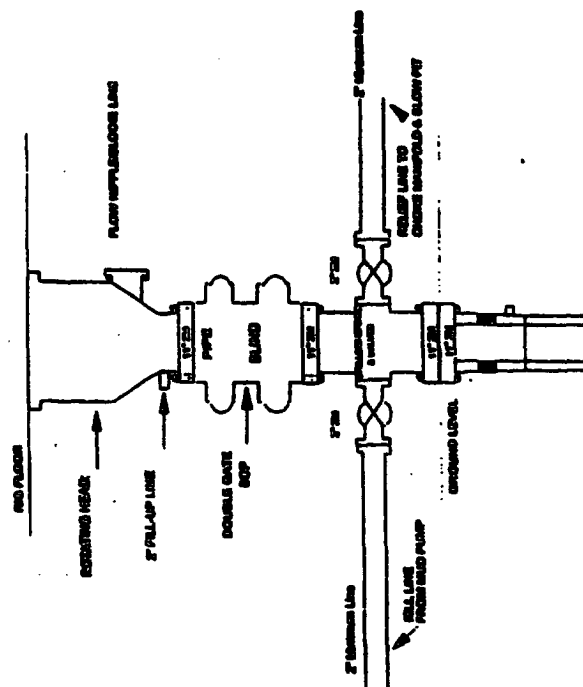
Choke manifold installation from Surface Casing Point to Total Depth. 2,000psi working pressure equipment with two chokes.

Figure #3

4-20-01

Burlington Resources

Drilling Rig
2000 psi System



BOP Installation from Surface Casing Point to Total Depth. 11\"/>

Figure #1