

UNITED STATES
DEPARTMENT OF THE INTERIOR
BUREAU OF LAND MANAGEMENT

FORM APPROVED
OMB NO. 1004-0137
Expires March 31, 2007

APPLICATION FOR PERMIT TO DRILL OR REENTER

1a. Type of Work <input checked="" type="checkbox"/> DRILL <input type="checkbox"/> REENTER		2006 FEB 3 10 12 AM RECEIVED		5. Lease Serial No. JIC-154
1b. Type of Well <input type="checkbox"/> Oil Well <input checked="" type="checkbox"/> Gas Well <input type="checkbox"/> Other <input type="checkbox"/> Single Zone <input checked="" type="checkbox"/> Multiple Zone				6. If Indian, Allottee or Tribe Name Jicarilla Apache
2. Name of Operator XTO Energy Inc.				7. Unit or CA Agreement Name and No. N/A
3a. Address 2700 Farmington Ave., Bldg. K, Ste 1 Farmington, NM		3b. Phone No. (include area code) 505-324-1090		8. Lease Name and Well No. Jicarilla Apache #8F
4. Location of Well (Report location clearly and in accordance with any State requirements)* At surface 1635' FSL x 1940' FEL in Sec 27, T26N, R5W At proposed prod. zone SAME				9. API Well No. 30-039-29785
14. Distance in miles and direction from nearest town or post office* Approximately 36 miles from Dulce, New Mexico post office				10. Field and Pool, or Exploratory WC Basin Basin DK/Blanco MV/Otero CH
15. Distance from proposed* location to nearest property or lease line, ft. (Also to nearest drg. unit line, if any) 1635'		16. No. of Acres in lease 2560		11. Sec., T., R., M., or Blk. and Survey or Area (J) Sec 27, T26N, R5W
18. Distance from proposed location* to nearest well, drilling, completed, applied for, on this lease, ft. 1050'		17. Spacing Unit dedicated to this well DK S/2 320, MV S/2 320, CH SE/4		12. County or Parish Rio Arriba
21. Elevations (Show whether DF, KDB, RT, GL, etc.) 6642' Ground Elevation		19. Proposed Depth 7770'		13. State NM
22. Approximate date work will start* August 2006		20. BLM/BIA Bond No. on file UTB-000138		
23. Estimated duration 2 weeks				

24. Attachments

The following, completed in accordance with the requirements of Onshore Oil and Gas Order No. 1, shall be attached to this form:

- | | |
|---|--|
| 1. Well plat certified by a registered surveyor. | 4. Bond to cover the operations unless covered by an existing bond on file (see Item 20 above). |
| 2. A Drilling Plan | 5. Operator certification. |
| 3. A Surface Use Plan (if the location is on National Forest System Lands, the SUPO shall be filed with the appropriate Forest Service Office). | 6. Such other site specific information and/or plans as may be required by the authorized officer. |

25. Signature <i>Kyla Vaughan</i>	Name (Printed/Typed) Kyla Vaughan	Date 02/01/06
Title Regulatory Compliance Tech		
Approved by (Signature) <i>[Signature]</i>	Name (Printed/Typed) [Signature]	Date 9/14/06
Title AFM		

Application approval does not warrant or certify that the applicant holds legal or equitable title to those rights in the subject lease which would entitle the applicant to conduct operations thereon.
Conditions of approval, if any, are attached.

Title 18 U.S.C. Section 1001 and Title 43 U.S.C. Section 1212, make it a crime for any person knowingly and willfully to make to any department or agency of the United States any false, fictitious or fraudulent statements or representations as to any matter within its jurisdiction.

*(Instructions on page 2)

DISTRICT I
1625 N. French Dr., Hobbs, N.M. 88240

DISTRICT II
1301 W. Grand Ave., Artesia, N.M. 88210

DISTRICT III
1000 Rio Brazos Rd., Aztec, N.M. 87410

DISTRICT IV
1220 South St. Francis Dr., Santa Fe, NM 87505

State of New Mexico
Energy, Minerals & Natural Resources Department

OIL CONSERVATION DIVISION
1220 South St. Francis Dr.
Santa Fe, NM 87505

Form C-102
Revised June 10, 2003
Submit to Appropriate District Office
State Lease - 4 Copies
Fee Lease - 3 Copies

RECEIVED
OIL CONSERVATION DIVISION

☐ AMENDED REPORT

WELL LOCATION AND ACREAGE DEDICATION PLAT

*API Number 30-039-29785		*Pool Code 71599	*Pool Name Basin Dakota
*Property Code 30380	*Property Name JICARILLA APACHE		*Well Number 8F
*CORD No. 167067	*Operator Name XTO ENERGY INC.		*Elevation 6642'

10 Surface Location

UL or lot no.	Section	Township	Range	Lot 14n	Feet from the	North/South line	Feet from the	East/West line	County
J	27	26-N	5-W		1635	SOUTH	1940	EAST	RIO ARriba

11 Bottom Hole Location If Different From Surface

UL or lot no.	Section	Township	Range	Lot 14n	Feet from the	North/South line	Feet from the	East/West line	County
*Dedicated Acres 5/2 320			*Joint or Infill		*Consolidation Code		*Order No.		

NO ALLOWABLE WILL BE ASSIGNED TO THIS COMPLETION UNTIL ALL INTERESTS HAVE BEEN CONSOLIDATED
OR A NON-STANDARD UNIT HAS BEEN APPROVED BY THE DIVISION

16	CALC'D CORNER PROTRACTION	LAT. 36°27'17.5" N (NAD 27) LONG. 107°20'36.0" W (NAD 27)	1635'	1940'	N 00-17-43 E 5279.5' (C)	17
						OPERATOR CERTIFICATION I hereby certify that the information contained herein is true and complete to the best of my knowledge and belief. Signature: <i>Heather J. Small</i> Printed Name: <i>Heather J. Small</i> Title: <i>Regulatory Compliance Tech</i> Date: <i>8/19/05</i>
18	SURVEYOR CERTIFICATION I hereby certify that the well location shown on this plat was plotted from field notes of actual surveys made by me or under my supervision, and that the same is true and correct to the best of my belief. Date: <i>8/19/05</i> Signature: <i>[Signature]</i> Printed Name: <i>[Name]</i> Title: <i>[Title]</i> Certificate Number: <i>14831</i>					

DISTRICT I
1625 N. French Dr., Hobbs, N.M. 88240

DISTRICT II
1301 W. Grand Ave., Artesia, N.M. 88210

DISTRICT III
1000 Elko Dr., Aztec, N.M. 87410

DISTRICT IV
1220 South St. Francis Dr., Santa Fe, NM 87505

State of New Mexico
Energy, Minerals & Natural Resources Department

OIL CONSERVATION DIVISION

1220 South St. Francis Dr.
Santa Fe, NM 87505

Form C-102

Revised June 10, 2003

Submit to Appropriate District Office

State Lease - 4 Copies

Fee Lease - 3 Copies

☐ AMENDED REPORT

WELL LOCATION AND ACREAGE DEDICATION PLAT

*API Number 30-039-29785	*Pool Code 72319	*Pool Name Blanco Mesa Verde
*Property Code 30300	*Property Name JICARILLA APACHE	*Well Number 8F
*OGRIID No. 167067	*Operator Name XTO ENERGY INC.	*Elevation 6642'

10 Surface Location

UL or lot no.	Section	Township	Range	Lot Idn	Feet from the	North/South line	Feet from the	East/West line	County
J	27	26-N	5-W		1635	SOUTH	1940	EAST	RIO ARriba

11 Bottom Hole Location If Different From Surface

UL or lot no.	Section	Township	Range	Lot Idn	Feet from the	North/South line	Feet from the	East/West line	County
*Dedicated Acres 5/2 320			*Joint or Inhib		*Consolidation Code		*Order No.		

NO ALLOWABLE WILL BE ASSIGNED TO THIS COMPLETION UNTIL ALL INTERESTS HAVE BEEN CONSOLIDATED
OR A NON-STANDARD UNIT HAS BEEN APPROVED BY THE DIVISION

16	CALC'D CORNER PROTRACTION	17	OPERATOR CERTIFICATION I hereby certify that the information contained herein is true and complete to the best of my knowledge and belief. Signature: Kelly K Small Printed Name: Kelly K Small Regulatory Compliance Tech Date: 8/19/05	
		18		SURVEYOR CERTIFICATION I hereby certify that the well location shown on this plat was plotted from field notes of actual surveys made by me or under my supervision, and that the same is true and correct to the best of my belief. Date: 8/22/05 Signature: [Signature] Professional Surveyor Certificate Number: 14831
		19		

DISTRICT I
1625 N. French Dr., Hobbs, N.M. 88240

DISTRICT II
1301 W. Grand Ave., Arizola, N.M. 88210

DISTRICT III
1000 N. Brazos Rd., Aztec, N.M. 87410

DISTRICT IV
1220 South St. Francis Dr., Santa Fe, NM 87605

State of New Mexico
Energy, Minerals & Natural Resources Department

OIL CONSERVATION DIVISION

1220 South St. Francis Dr.
Santa Fe, NM 87605

Form C-102

Revised June 10, 2003

Submit to Appropriate District Office

State Lease - 4 Copies

Fee Lease - 3 Copies

☐ AMENDED REPORT

WELL LOCATION AND ACREAGE DEDICATION PLAT

*API Number 30-039-29785	*Pool Code 82329	*Pool Name Otero Chacra
*Property Code 30320	*Property Name JICARILLA APACHE	*Well Number 8F
*OGRD No. 1167067	*Operator Name XTO ENERGY INC.	*Elevation 6642'

10 Surface Location

UL or lot no.	Section	Township	Range	Lot 1/4	Feet from the	North/South line	Feet from the	East/West line	County
J	27	26-N	5-W		1635	SOUTH	1940	EAST	RIO ARriba

11 Bottom Hole Location If Different From Surface

UL or lot no.	Section	Township	Range	Lot 1/4	Feet from the	North/South line	Feet from the	East/West line	County
Dedicated Acres SE 1/4 160			Joint or Infill		Consolidation Code		Order No.		

NO ALLOWABLE WILL BE ASSIGNED TO THIS COMPLETION UNTIL ALL INTERESTS HAVE BEEN CONSOLIDATED
OR A NON-STANDARD UNIT HAS BEEN APPROVED BY THE DIVISION

16	CALC'D CORNER PROTRACTION	17 OPERATOR CERTIFICATION I hereby certify that the information contained herein is true and complete to the best of my knowledge and belief. Signature: Kelly L. Small Printed Name: Kelly L. Small Title: Regulatory Compliance Tech Date: 8/19/05
27 LAT. 36°27'17.5" N (NAD 27) LONG. 107°20'36.0" W (NAD 27) 1940' 1635' N 60-17-43 E N 89-55-36 W 5311.45 (C)		18 SURVEYOR CERTIFICATION I hereby certify that the well location shown on this plat was plotted from field notes of actual surveys made by me or under my supervision, and that the same is true and correct to the best of my belief. Date: 8/22/05 Signature: [Signature] Title: Registered Professional Surveyor Certificate Number: 14831
CALC'D CORNER PROTRACTION		

DISTRICT I
1625 N. French Dr., Hobbs, N.M. 88240

DISTRICT II
1301 W. Grand Ave., Artesia, N.M. 88210

DISTRICT III
1000 Rio Brazos Rd., Aztec, N.M. 87410

DISTRICT IV
1220 South St. Francis Dr., Santa Fe, NM 87505

State of New Mexico
Energy, Minerals & Natural Resources Department
OIL CONSERVATION DIVISION
1220 South St. Francis Dr.
Santa Fe, NM 87505

Form C-102
Revised June 10, 2003
Submit to Appropriate District Office
State Lease - 4 Copies
Fee Lease - 3 Copies

☐ AMENDED REPORT

WELL LOCATION AND ACREAGE DEDICATION PLAT

*API Number 30-039-29785		*Pool Code 97232	*Pool Name WC BASIN MANCOS
*Property Code 30320	*Property Name JICARILLA APACHE		*Well Number 8F
*OGPD No. 167067	*Operator Name XTO ENERGY INC.		*Elevation 6642'

10 Surface Location

UL or lot no.	Section	Township	Range	Lot Idn	Feet from the	North/South line	Feet from the	East/West line	County
J	27	26-N	5-W		1635	SOUTH	1940	EAST	RIO ARriba

11 Bottom Hole Location If Different From Surface

UL or lot no.	Section	Township	Range	Lot Idn	Feet from the	North/South line	Feet from the	East/West line	County
*Dedicated Acres 160 SW 1/4					*Joint or Infill		*Consolidation Code		*Order No.

NO ALLOWABLE WILL BE ASSIGNED TO THIS COMPLETION UNTIL ALL INTERESTS HAVE BEEN CONSOLIDATED OR A NON-STANDARD UNIT HAS BEEN APPROVED BY THE DIVISION

16 CALC'D CORNER PROTRACTION	27 LAT. 36°27'17.5" N (NAD 27) LONG. 107°20'36.0" W (NAD 27) 1635' 5311.45 (C) N 89-55-36 W	17 OPERATOR CERTIFICATION I hereby certify that the information contained herein is true and complete to the best of my knowledge and belief. Kyla Vaughan Signature Kyla Vaughan Printed Name Regulatory Compliance Title 5/26/06 Date

Submit 3 Copies To Appropriate District
Office
District I
1625 N. French Dr., Hobbs, NM 87240
District II
1301 W. Grand Ave., Artesia, NM 88210
District III
1000 Rio Brazos Rd., Aztec, NM 87410
District IV
1220 S. St. Francis Dr., Santa Fe, NM 87505

State of New Mexico
Energy, Minerals and Natural Resources

OIL CONSERVATION DIVISION
1220 South St. Francis Dr.
Santa Fe, NM 87505

Form C-103
May 27, 2004

WELL API NO <u>30-039-29785</u>
5. Indicate Type of Lease STATE <input type="checkbox"/> FEE <input type="checkbox"/>
6. State Oil & Gas Lease No. JIC-154
7. Lease Name or Unit Agreement Name: Jicarilla Apache
8. Well Number #8F
9. OGRID Number 167067
10. Pool name or Wildcat Basin DK/Blaco MW/Otero CH

SUNDRY NOTICES AND REPORTS ON WELLS
(DO NOT USE THIS FORM FOR PROPOSALS TO DRILL OR TO DEEPEN OR PLUG BACK TO A
DIFFERENT RESERVOIR. USE "APPLICATION FOR PERMIT" (FORM C-101) FOR SUCH
PROPOSALS.)

1. Type of Well: Oil Well <input type="checkbox"/> Gas Well <input checked="" type="checkbox"/> Other
2. Name of Operator XTO Energy Inc.
3. Address of Operator 2700 Farmington Ave., Bldg. K. Ste 1 Farmington, NM 87401
4. Well Location Unit Letter <u>J</u> : <u>1635</u> feet from the <u>South</u> line and <u>1940</u> feet from the <u>East</u> line Section <u>27</u> Township <u>26N</u> Range <u>5W</u> NMPM <u>NMPM</u> County <u>Rio Arriba</u>
11. Elevation (Show whether DR, RKB, RT, GR, etc.) 6642' Ground Elevation
Pit or Below-grade Tank Application <input checked="" type="checkbox"/> or Closure <input type="checkbox"/>
Pit type <u>DRILL</u> Depth to Groundwater <u>>100</u> Distance from nearest fresh water well <u>>1000</u> Distance from nearest surface water <u>>200</u>
Pit Liner Thickness: <u>12</u> mil Below-Grade Tank: Volume <u>8000</u> bbls; Construction Material

12. Check Appropriate Box to Indicate Nature of Notice, Report, or Other Data

NOTICE OF INTENTION TO:

PERFORM REMEDIAL WORK ☐ PLUG AND ABANDON ☐
TEMPORARILY ABANDON ☐ CHANGE PLANS ☐
PULL OR ALTER CASING ☐ MULTIPLE COMPLETION ☐
OTHER: PIT ☒

SUBSEQUENT REPORT OF:

REMEDIAL WORK ☐ ALTERING CASING ☐
COMMENCE DRILLING OPNS. ☐ PLUG AND ABANDONMENT ☐
CASING TEST AND CEMENT JOB ☐
OTHER: ☐

13. Describe proposed or completed operations. (Clearly state all pertinent details, and give pertinent dates, including estimated date of starting any proposed work). SEE RULE 1103. For Multiple Completions: Attach wellbore diagram of proposed completion or recompletion.

XTO Energy intends to install a pit on location for drilling.

I hereby certify that the information above is true and complete to the best of my knowledge and belief. I further certify that any pit or below-grade tank has been/will be constructed or closed according to NMOCD guidelines ☒ , a general permit ☐ or an (attached) alternative OCD-approved plan ☐

SIGNATURE Kyla Vaughan TITLE Regulatory Compliance Tech DATE 02/01/06
Type or print name Kyla Vaughan E-mail address: kyla_vaughan@xtoenergy.com Telephone No. 505-564-6726

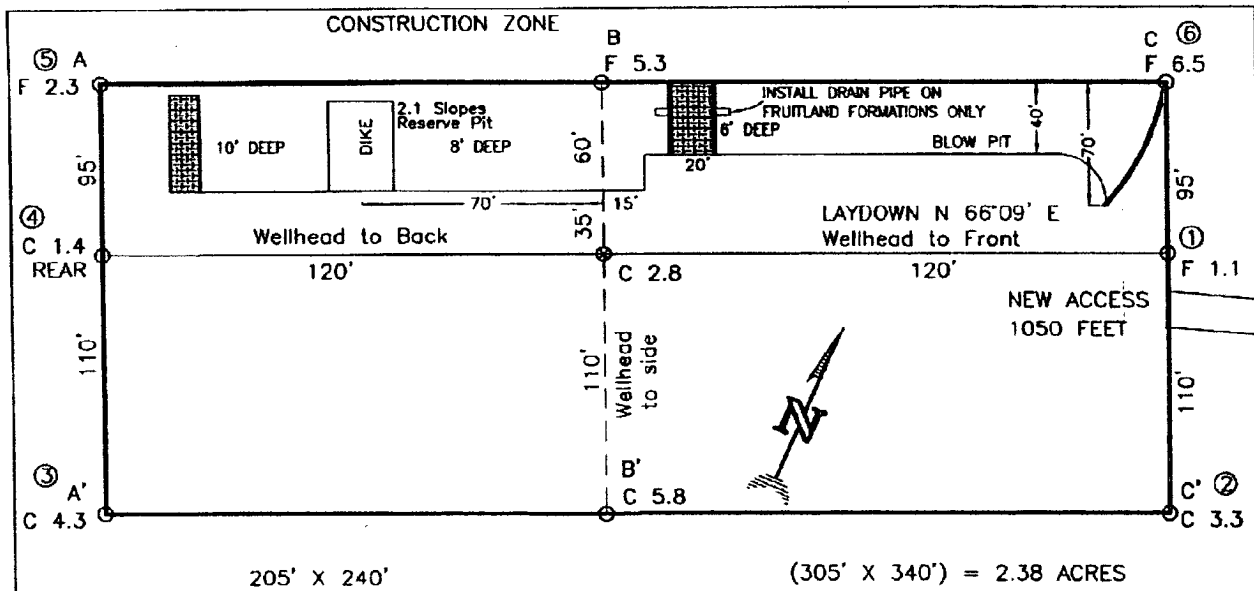
For State Use Only

APPROVED BY [Signature] TITLE DEPUTY OIL & GAS INSPECTOR, DIST. 4 DATE SEP 18 2006
Conditions of Approval, if any:

EXHIBIT D

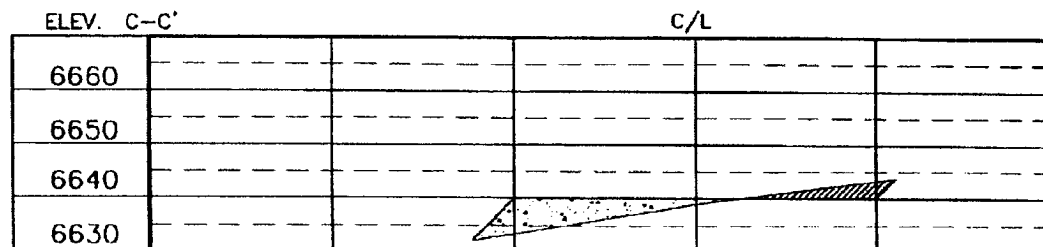
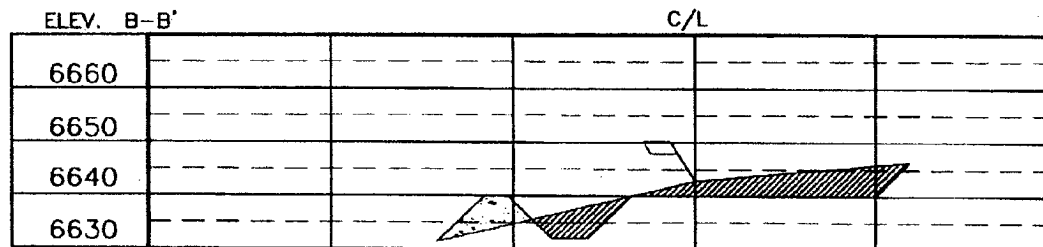
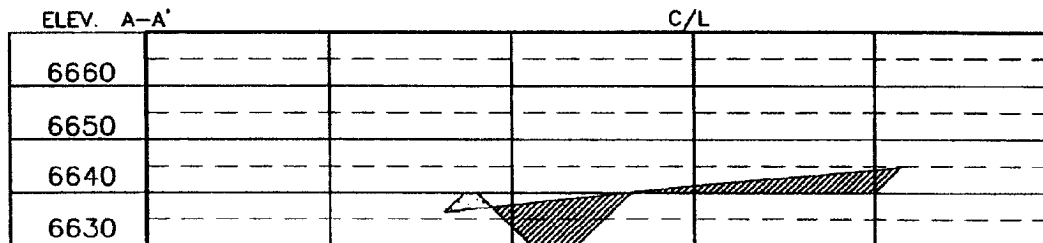
XTO ENERGY INC.
 JICARILLA APACHE No.8F, 1635 FSL 1940 FEL
 SECTION 27, T26N, R5W, N.M.P.M., RIO ARriba COUNTY, N. M.
 GROUND ELEVATION: 6642', DATE: JUNE 14, 2005

LAT. = 36°27'17.5" N.
 LONG. = 107°20'36.0" W
 NAD 27



RESERVE PIT DIKE: TO BE 8' ABOVE DEEP SIDE (OVERFLOW - 3' WIDE AND 1' ABOVE SHALLOW SIDE).
 BLOW PIT: OVERFLOW PIPE HALFWAY BETWEEN TOP AND BOTTOM AND TO EXTEND OVER PLASTIC LINER AND INTO BLOW PIT.

NOTE: DAGGETT ENTERPRISES, INC. IS NOT LIABLE FOR UNDERGROUND UTILITIES OR PIPELINES. NEW MEXICO ONE CALL TO BE NOTIFIED 48 HOURS PRIOR TO EXCAVATION OR CONSTRUCTION.



NOTE: CONTRACTOR SHOULD CALL ONE-CALL FOR LOCATION OF ANY MARKED OR UNMARKED BURIED PIPELINES OR CABLES ON WELL PAD AND OR ACCESS ROAD AT LEAST TWO (2) WORKING DAYS PRIOR TO CONSTRUCTION.

Daggett Enterprises, Inc.
 Surveying and Oil Field Services
 P. O. Box 15058 • Farmington, NM 87401
 Phone (505) 328-1772 • Fax (505) 328-6019
 NEW MEXICO L.S. No. 14831



DATE: 07/21/05
 DRAWN BY: B.L.
 CHECKED BY: CR432

EXHIBIT E

XTO ENERGY INC.

Jicarilla Apache #8F

APD Data

January 31, 2006

Location: 1635' FSL x 1940' FEL Sec 27, T26N, R5W

County: Rio Arriba

State: New Mexico

GREATEST PROJECTED TD: 7770'

OBJECTIVE: Basin Dakota / Blanco Mesaverde /

Otero Chacra

APPROX GR ELEV: 6642'

Est KB ELEV: 6654' (12' AGL)

1. MUD PROGRAM:

INTERVAL	0' to 360'	360' to 2500'	2500' to 7770
HOLE SIZE	12.25"	7.875"	7.875"
MUD TYPE	FW/Spud Mud	FW/Polymer	LSND / Gel Chemical
WEIGHT	8.6-9.0	8.4-8.8	8.6- 9.20
VISCOSITY	28-32	28-32	45-60
WATER LOSS	NC	NC	8-10

Remarks: Use fibrous materials as needed to control seepage and lost circulation. Pump high viscosity sweeps as needed for hole cleaning. Raise viscosity at TD for logging. Reduce viscosity after logging for cementing purposes.

2. CASING PROGRAM:

Surface Casing: 8.625" casing to be set at $\pm 360'$ in a 12-1/4" hole filled with 9.20 ppg mud

Interval	Length	Wt	Gr	Cplg	Coll Rating (psi)	Burst Rating (psi)	Jt Str (M-lbs)	ID (in)	Drift (in)	SF Coll	SF Burst	SF Ten
0'-360'	360'	24.0#	J-55	ST&C	1370	2950	244	8.097	7.972	7.950	17.13	28.24

Production Casing: 5.5" casing to be set at TD ($\pm 7770'$) in 7-7/8" hole filled with 9.20 ppg mud.

Interval	Length	Wt	Gr	Cplg	Coll Rating (psi)	Burst Rating (psi)	Jt Str (M-lbs)	ID (in)	Drift (in)	SF Coll	SF Burst	SF Ten
0'-7770	7770'	17.0#	J-55	LT&C	4910	5320	247	4.892	4.767	1.32	1.43	1.87

3. WELLHEAD:

- Casing Head: Larkin Fig 92 (or equivalent), 9" nominal, 2,000 psig WP (4,000 psig test) with 8-5/8" 8rnd thread on bottom and 11-3/4" 8rnd thread on top.
- Tubing Head: Larkin Fig 612 (or equivalent), 6.456" nominal, 2,000 psig WP (4,000 psig test), 5-1/2" 8rnd female thread on bottom (or slip-on, weld-on), 8-5/8" 8rnd thread on top.

EXHIBIT F

4. CEMENT PROGRAM (Slurry design may change slightly, but the plan is to circulate cement to surface on both casing strings):

A. Surface: 8.625", 24.0#, J-55, ST&C casing to be set at $\pm 360'$ in 12-1/4" hole.

214 sx of Type III cement (or equivalent) typically containing accelerator and LCM, mixed at 14.5 ppg, 1.39 ft³/sk, & 6.70 gal wtr/sk.

Total slurry volume is 297 ft³, 100% excess of calculated annular volume to 360'.

B. Production: 5.5", 17.0#, J-55 (or K-55), LT&C casing to be set at $\pm 7770'$ in 7.875" hole. DV Tool set @ $\pm 4750'$

1st Stage

LEAD:

± 250 sx of Premium Lite HS (Type III/Poz/Gel) with 2% salt, 1/4 pps cello, 0.2% dispersant, 0.5% fluid loss & 2% LCM mixed at 12.5 ppg, 2.01 ft³/sk, 10.55 gal wtr/sx.

TAIL:

150 sx Type III with 5% bonding additive, 1/4 pps cello, 2% LCM, 0.3% dispersant & 0.2% fluid loss mixed at 14.2 ppg, 1.54 cuft/sx, 8.00 gal/sx.

2nd Stage

LEAD:

± 403 sx of Type III with 8% gel, 1/4 pps cello & 2% LCM mixed at 11.9 ppg, 2.54 ft³/sk, 15.00 gal wtr/sx.

TAIL:

100 sx Type III neat mixed at 14.5 ppg, 1.39 cuft/sx, 6.3 gal/sx.

Total estimated slurry volume for the 5-1/2" production casing is 1894 ft³.

Note: The slurry design may change slightly based upon actual conditions. Final cement volumes will be determined from the caliper logs plus 40%. It will be attempted to circulate cement to the surface.

5. LOGGING PROGRAM:

A. Mud Logger: The mud logger will come on at 2,900' and will remain on the hole until TD. The mud will be logged in 10' intervals.

B. Open Hole Logs as follows: Run Array Induction/SFL/GR/SP fr/TD (7770') to the bottom of the surface csg. Run Neutron/Lithodensity/Pe/GR/Cal from TD (7770') to 3,000'.

6. FORMATION TOPS:

Est. KB Elevation: 6654'

FORMATION	Sub-Sea Elev.	WELL DEPTH	FORMATION	Sub-Sea Elev.	WELL DEPTH
Ojo Alamo SS	4129	2,525	Gallup Ss	362	6,292
Kirtland Shale	4018	2,636	Greenhorn Ls	-492	7,146
Farmington SS			Graneros Sh	-553	7,207
Fruitland Formation	3941	2,713	1 ST Dakota Ss*	-580	7,234
Lower Fruitland Coal	3685	2,969	2 ND Dakota Ss*	-605	7,259
Pictured Cliffs SS	3635	3,019	3 RD Dakota Ss*	-676	7,330
Lewis Shale	3477	3,177	4 TH Dakota Ss*	-720	7,374
Chacra SS**	2724	3,930	5 TH Dakota Ss*	-755	7,409
Cliffhouse SS	1931	4,723	6 TH Dakota Ss*	-795	7,449
Menefee	1872	4,782	Burro Canyon Ss*	-830	7,484
Point Lookout SS**	1405	5,249	Morrison Fm**	-950	7,604
Mancos Shale	1053	5,601	Total Depth	-1116	7,770

* Primary Objective

** Secondary Objective

**** Maximum anticipated BHP should be <2,000 psig (<0.30 psi/ft) *****

7. COMPANY PERSONNEL:

Name	Title	Office Phone	Home Phone
John Egelston	Drilling Engineer	505-564-6734	505-330-6902
Gary Hancock	Drilling Engineer	505-324-1090	
Dennis Elrod	Drilling foreman	505-486-6460	505-326-2024
Red Meek	Project Geologist	817-885-2800	817-427-2475
Barry Voigt	Reservoir Engineer	817-885-2462	817-540-2092

JWE
1/31/06

EXHIBIT F

BOP SCHEMATIC FOR DRILLING OPERATIONS CLASS 1 (2M) NORMAL PRESSURE

TESTING PROCEDURE

1. Test BOP after installation:

Pressure test BOP to 200-300
psig (low pressure) for 10' min.

Test BOP to Working Press or
to 70% internal yield of surf csg
(10 min) or which ever is less.

2. Test operation of (both) rams on every trip.

3. Check and record Accumulator pressure on every tour.

4. Re-pressure test BOP stack after changing out rams.

5. Have kelly cock valve with handle available.

6. Have safety valve and subs to fit all sizes of drill string on the rig floor and ready to go.

ROTATING HEAD
(OPTIONAL)

FILL UP LINE

FLOW LINE
TO PIT

PIPE
RAMS

BLIND
RAMS

KILL LINE
2" dia min.

TO CHOKE
MANIFOLD
2" dia min.

See Choke Manifold drawing for
specifications

HCR VALVE (OPTIONAL)

2" (MIN) FULL OPENING
VALVE

MUD CROSS

** Remove check or ball
from check valve and
press test to same press
as BOP's. **

EXHIBIT F

CHOKE MANIFOLD SCHEMATIC FOR DRILLING OPERATIONS CLASS 1 (2M) NORMAL PRESSURE

1. Stake all lines from choke manifold to pit.
2. Pressure test choke manifold after installation.
3. Pressure test manifold at the same time with the BOP Stack. Test manifold to the same test pressures.

TESTING PROCEDURE

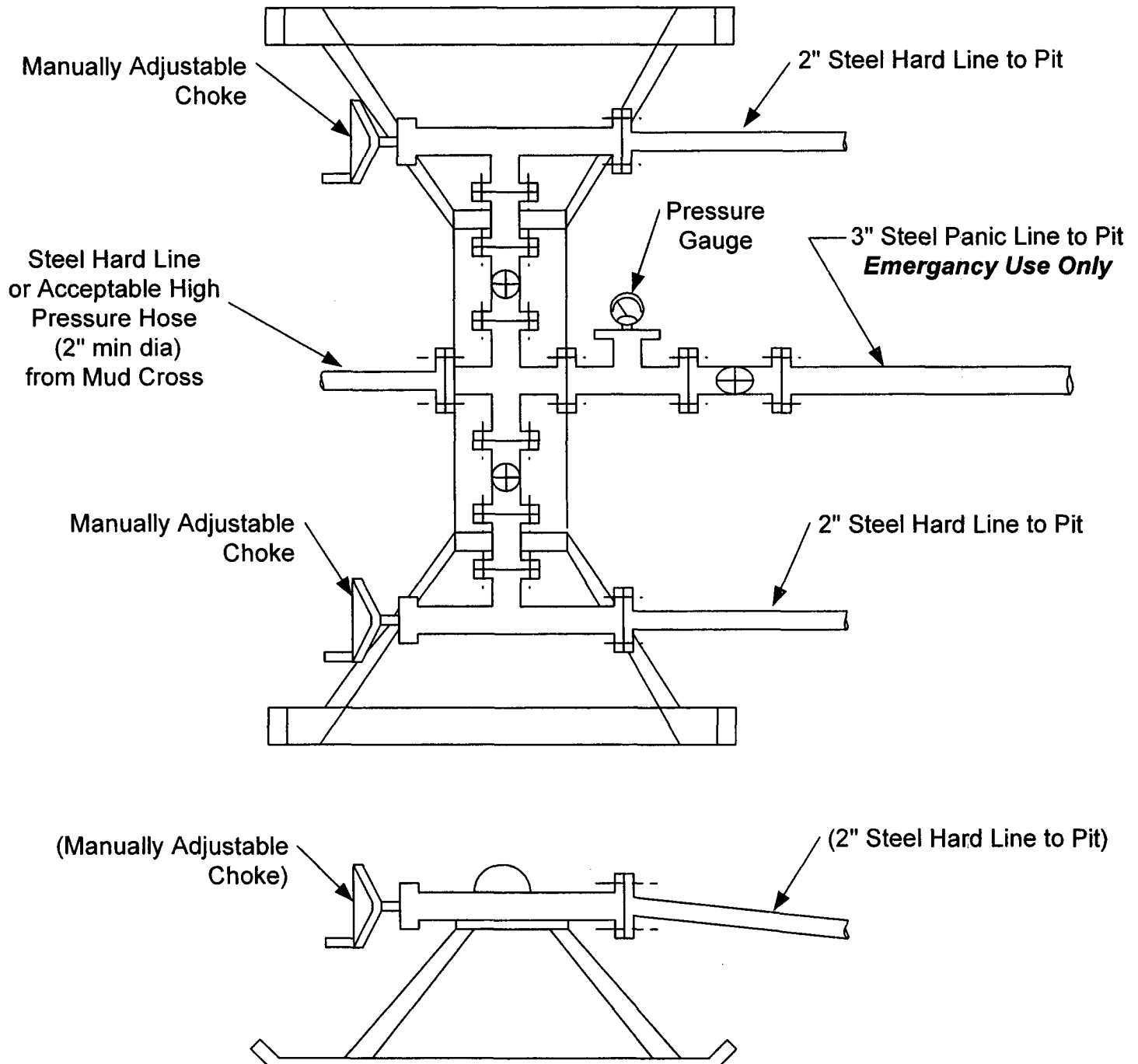


EXHIBIT F

UNITED STATES
DEPARTMENT OF THE INTERIOR
BUREAU OF LAND MANAGEMENT

FORM APPROVED
OMB NO. 1004-0137
Expires March 31, 2007

SUNDRY NOTICES AND REPORTS ON WELLS

Do not use this form for proposals to drill or to re-enter an abandoned well. Use Form 3160-3 (APD) for such proposals.

SUBMIT IN TRIPLICATE - Other instructions on reverse side

1. Type of Well <input type="checkbox"/> Oil Well <input checked="" type="checkbox"/> Gas Well <input type="checkbox"/> Other	5. Lease Serial No. JIC-154
2. Name of Operator XTO Energy Inc.	6. If Indian, Allottee or Tribe Name JICARILLA APACHE
3a. Address 2700 Farmington Ave., Bldg. K, Ste 1 Farmington,	7. If Unit or CA/Agreement, Name and/or No.
3b. Phone No. (include area code) 505-324-1090	8. Well Name and No. Jicarilla Apache #8F
4. Location of Well (Footage, Sec., T., R., M., or Survey Description) 1635' FSL x 1940' FEL in Sec 27, T26N, R5W	9. API Well No. 30-039-29785
	10. Field and Pool, or Exploratory Area BS DK/EL MV/OT CH
	11. County or Parish, State Rio Arriba NM

12. CHECK APPROPRIATE BOX(ES) TO INDICATE NATURE OF NOTICE, REPORT, OR OTHER DATA

TYPE OF SUBMISSION	TYPE OF ACTION			
<input checked="" type="checkbox"/> Notice of Intent	<input type="checkbox"/> Acidize	<input type="checkbox"/> Deepen	<input type="checkbox"/> Production (Start/Resume)	<input type="checkbox"/> Water Shut-Off
<input type="checkbox"/> Subsequent Report	<input type="checkbox"/> Alter Casing	<input type="checkbox"/> Fracture Treat	<input type="checkbox"/> Reclamation	<input type="checkbox"/> Well Integrity
<input type="checkbox"/> Final Abandonment Notice	<input type="checkbox"/> Casing Repair	<input type="checkbox"/> New Construction	<input type="checkbox"/> Recomplete	<input type="checkbox"/> Other
	<input checked="" type="checkbox"/> Change Plans	<input type="checkbox"/> Plug and Abandon	<input type="checkbox"/> Temporarily Abandon	
	<input type="checkbox"/> Convert to Injection	<input type="checkbox"/> Plug Back	<input type="checkbox"/> Water Disposal	

13. Describe Proposed or Completed Operation (clearly state all pertinent details, including estimated starting date of any proposed work and approximate duration thereof. If the proposal is to deepen directionally or recompleat horizontally, give subsurface locations and measured and true vertical depths of all pertinent markers and zones. Attach the Bond under which the work will be performed or provide the Bond No. on file with BLM/BIA. Required subsequent reports shall be filed within 30 days following completion of the involved operations. If the operation results in a multiple completion or recompleat in a new interval, a Form 3160-4 shall be filed once testing has been completed. Final Abandonment Notices shall be filed only after all requirements, including reclamation, have been completed, and the operator has determined that the final site is ready for final inspection.)

XTO Energy, Inc. proposes to add the WC Basin Mancos pool to the AED permit for this well. Particulars for this pool are included on the attached plat to this sundry.

14. I hereby certify that the foregoing is true and correct Name (Printed/Typed) Kyla Vaughan	Title Regulatory Compliance Tech	
<i>Kyla Vaughan</i>	Date 05/26/06	
THIS SPACE FOR FEDERAL OR STATE OFFICE USE		
Approved by <i>[Signature]</i>	Title AF-4	Date 9/14/06
Conditions of approval, if any, are attached. Approval of this notice does not warrant or certify that the applicant holds legal or equitable title to those rights in the subject lease which would entitle the applicant to conduct operations thereon.	Office FFD	

Title 18 U.S.C. Section 1001, and Title 43 U.S.C. Section 1212, makes it a crime for any person knowingly and willfully to make to any department or agency of the United States any false, fictitious or fraudulent statements or representations as to any matter within its jurisdiction

NMOCDD

UNITED STATES
DEPARTMENT OF THE INTERIOR
BUREAU OF LAND MANAGEMENT

FORM APPROVED
OMB NO. 1004-0137
Expires March 31, 2007

SUNDRY NOTICES AND REPORTS ON WELLS

Do not use this form for proposals to drill or to re-enter an abandoned well. Use Form 3160-3 (APD) for such proposals.

SUBMIT IN TRIPLICATE - Other instructions on reverse side

1. Type of Well <input type="checkbox"/> Oil Well <input checked="" type="checkbox"/> Gas Well <input type="checkbox"/> Other		5. Lease Serial No. JTC-154
2. Name of Operator XTO Energy Inc.		6. If Indian, Allottee or Tribe Name JICARILLA APACHE TRIBE
3a. Address 2700 Farmington Ave., Bldg. K, Ste 1 Farmington,	3b. Phone No. (include area code) 505-324-1090	7. If Unit or CA/Agreement, Name and/or No. RECEIVED
4. Location of Well (Footage, Sec., T., R., M., or Survey Description) 1635' FSL & 1940' FEL SEC 27J-T26N-R5W		8. Well Name and No. NM JICARILLA APACHE #8F
		9. API Well No. 30-039-29785
		10. Field and Pool, or Exploratory Area BASIN DAKOTA/OTERO CHACRA BLANCO MESAVERDE
		11. County or Parish, State RIO ARRIBA NM

12. CHECK APPROPRIATE BOX(ES) TO INDICATE NATURE OF NOTICE, REPORT, OR OTHER DATA

TYPE OF SUBMISSION	TYPE OF ACTION			
<input checked="" type="checkbox"/> Notice of Intent	<input type="checkbox"/> Acidize	<input type="checkbox"/> Deepen	<input type="checkbox"/> Production (Start/Resume)	<input type="checkbox"/> Water Shut-Off
<input type="checkbox"/> Subsequent Report	<input type="checkbox"/> Alter Casing	<input type="checkbox"/> Fracture Treat	<input type="checkbox"/> Reclamation	<input type="checkbox"/> Well Integrity
<input type="checkbox"/> Final Abandonment Notice	<input type="checkbox"/> Casing Repair	<input type="checkbox"/> New Construction	<input type="checkbox"/> Recomplete	<input type="checkbox"/> Other
	<input checked="" type="checkbox"/> Change Plans	<input type="checkbox"/> Plug and Abandon	<input type="checkbox"/> Temporarily Abandon	
	<input type="checkbox"/> Convert to Injection	<input type="checkbox"/> Plug Back	<input type="checkbox"/> Water Disposal	

13. Describe Proposed or Completed Operation (clearly state all pertinent details, including estimated starting date of any proposed work and approximate duration thereof. If the proposal is to deepen directionally or recompleat horizontally, give subsurface locations and measured and true vertical depths of all pertinent markers and zones. Attach the Bond under which the work will be performed or provide the Bond No. on file with BLM/BIA. Required subsequent reports shall be filed within 30 days following completion of the involved operations. If the operation results in a multiple completion or recompleat in a new interval, a Form 3160-4 shall be filed once testing has been completed. Final Abandonment Notices shall be filed only after all requirements, including reclamation, have been completed, and the operator has determined that the final site is ready for final inspection.)

XTO Energy Inc. is requesting approval to change the production casing string and production cement design from the original APD. Please see attached.

14. I hereby certify that the foregoing is true and correct
Name (Printed/Typed)

LORRY D. BINGHAM

Title

REGULATORY COMPLIANCE TECH

Date **4/27/06**

THIS SPACE FOR FEDERAL OR STATE OFFICE USE

Approved by

Title

Date

Conditions of approval, if any, are attached. Approval of this notice does not warrant or certify that the applicant holds legal or equitable title to those rights in the subject lease which would entitle the applicant to conduct operations thereon.

Office

Title 18 U.S.C. Section 1001, and Title 43 U.S.C. Section 1212, makes it a crime for any person knowingly and willfully to make to any department or agency of the United States any false, fictitious or fraudulent statements or representations as to any matter within its jurisdiction.

NMOC

XTO ENERGY INC.
Jicarilla Apache #8F
APD Data – Casing Design Sundry
April 27, 2006

Location: 1635' FSL x 1940' FEL Sec 27, T26N, R5W **County:** Rio Arriba **State:** New Mexico

GREATEST PROJECTED TD: 7770'
Otero Chacra
APPROX GR ELEV: 6642'

OBJECTIVE: Basin Dakota / Blanco Mesaverde /
Est KB ELEV: 6654' (12' AGL)

2. CASING PROGRAM:

Surface Casing: 8.625" casing to be set at $\pm 360'$ in a 12-1/4" hole filled with 9.20 ppg mud

Interval	Length	Wt	Gr	Cplg	Coll Rating (psi)	Burst Rating (psi)	Jt Str (M-lbs)	ID (in)	Drift (in)	SF Coll	SF Burst	SF Ten
0'-360'	360'	24.0#	J-55	ST&C	1370	2950	244	8.097	7.972	7.950	17.13	28.24

Production Casing: 5.5" casing to be set at TD ($\pm 7770'$) in 7-7/8" hole filled with 9.20 ppg mud.

Interval	Length	Wt	Gr	Cplg	Coll Rating (psi)	Burst Rating (psi)	Jt Str (M-lbs)	ID (in)	Drift (in)	SF Coll	SF Burst	SF Ten
0'-7770	7770'	15.5#	J-55	ST&C	4040	4810	202	4.950	4.825	1.09	1.29	1.68

JWE
4/27/06