

UNITED STATES
DEPARTMENT OF THE INTERIOR
BUREAU OF LAND MANAGEMENT

SUNDRY NOTICES AND REPORTS ON WELLS

Do not use this form for proposals to drill or reenter an abandoned well. Use Form 3160-3 (APD) for such proposals.

FORM APPROVED
OMB No. 1004-0135
Expires July 31, 1996

5. Lease Serial No.

SF 080312A

6. Indian, Allottee or Tribe Name

7. If Unit or CA/Agreement, Name and/or N

East Puerto Chiquito Mancos Unit

8. Well Name and No.

EPCMU #27 (H-5)

9. API Well No.

30-039-06700

10. Field and Pool, or Exploratory Area

East Puerto Chiquito Mancos

11. County or Parish, State

Rio Arriba, New Mexico

SUBMIT IN TRIPLICATE - Other instructions on reverse side

1. Type of Well

☐ Oil Well ☒ Gas Well ☐ Other:

2. Name of Operator

Benson-Montin-Greer Drilling Corp.

3a. Address

4900 College Blvd., Farmington, NM 87401

3b. Phone No. (include area code)

505-325-8874

4. Location of Well (Footage, Sec., T., R., M., or Survey Description)

Sec. 5-T26N-R1E

1650 FNL & 990 FEL

12. CHECK APPROPRIATE BOX(ES) TO INDICATE NATURE OF NOTICE, REPORT, OR OTHER DATA

TYPE OF SUBMISSION	TYPE OF ACTION
<input checked="" type="checkbox"/> Notice of Intent	<input type="checkbox"/> Acidize <input type="checkbox"/> Deepen <input type="checkbox"/> Production (Start/Resume) <input type="checkbox"/> Water Shut-Off
<input type="checkbox"/> Subsequent Report	<input type="checkbox"/> Alter Casing <input type="checkbox"/> Fracture Treat <input type="checkbox"/> Reclamation <input type="checkbox"/> Well Integrity
<input type="checkbox"/> Final Abandonment Notice	<input type="checkbox"/> Casing Repair <input type="checkbox"/> New Construction <input type="checkbox"/> Recomplete <input type="checkbox"/> Other
	<input type="checkbox"/> Change Plans <input checked="" type="checkbox"/> Plug and Abandon <input type="checkbox"/> Temporarily Abandon
	<input type="checkbox"/> Convert to Injection <input type="checkbox"/> Plug Back <input type="checkbox"/> Water Disposal

13. Describe Proposed or Completed Operations (clearly state all pertinent details, including estimated starting date of any proposed work and approximate duration thereof. If the proposal is to deepen directionally or recomple horizontally, give subsurface locations and measured and true vertical depths of all pertinent markers and zones. Attach the Bond under which the work will be performed or provide the Bond No. on file with BLM/BIA. Required subsequent reports shall be filed within 30 days following completion of the involved operations. If the operation results in a multiple completion or recompletion in a new interval, a Form 3160-4 shall be filed once Testing has been completed. Final Abandonment Notices shall be filed only after all requirements, including reclamation, have been completed, and the operator has determined that the site is ready for final inspection.)

Benson-Montin-Greer Drillings proposes to plug and abandon the EMPCU #27 (H-5) as follows: Notify NMOCD & BLM representatives 24 hrs prior to commencing operations. Spot cement plug #1 with a volume adequate to fill from TD (2780') - 2450'; filling the openhole portion of the hole from 2553' - 2780' & filling the 4-1/2" csg with a volume of cement adequate to fill both the backside & csg with cement to at least 2450', covering all perforations (top perforation = 2460'). Wait on cement to set & tag the top. Set cement retainer at +/-1774' & squeeze a volume of cement adequate to fill the 4-1/2" csg to the base of the perforations (1891') plus 100% excess. Perforate squeeze holes at +/-802' (50' below the 7" csg shoe) & squeeze a volume of cement adequate to fill between the 4-1/2" & the 7" csg to a minimum of 602' (150' above the 7" csg shoe). Wait on cement, clean out inside the 4-1/2" csg to below 802' & run a CBL to verify bond from at least 602'-802'. Set a cement plug at surface filling the 4-1/2" csg from surface to at least 50'. Install a dry hole marker, cut off wellhead & clean location.

Place a cement plug from 1588'-1488' inside outside 4 1/2" to cover Gallup top, Replace inside plug 802'-702' + excess

14. I hereby certify that the foregoing is true and correct

Name (Printed/Typed)

Trudy Grubelnik

Title

Production Clerk

Signature

Date

September 18, 2006

THIS SPACE FOR FEDERAL OR STATE USE

Approved by

Original Signed: Stephen Mason

Title

Date

SEP 27 2006

Conditions of approval, if any, are attached. Approval of this notice does not warrant or certify that the applicant holds legal or equitable title to those rights in the subject lease which would entitle the applicant to conduct operations thereon.

Office

Title 18 U.S.C. Section 1001, makes it a crime for any person knowingly and willfully to make to any department or agency of the United States any false, fictitious or fraudulent statements or representations as to any matter within its jurisdiction.

(Instructions on reverse)

NMOCD 87

Current Wellbore Configuration

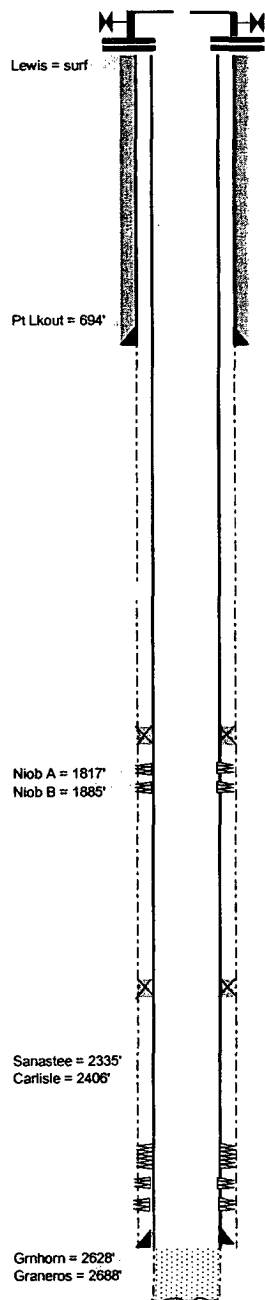
Benson-Montin-GreerDrilling Corp.

EPCMU #H5 (27) , API #30039067000000

1650' FNL-990' FEL, Sec 5-T26N-R1E

Rio Arriba County, New Mexico

Spud: 6/23/62



GL = 7025' ; KB = 7037'
(All depths referenced to KB unless otherwise noted)

Cum. Oil: 35,714 BBL
Cum. Gas: 25,078 MMCF
Cum. Water: 142 BBL

8-3/4" hole to 753', ran J-55, 20#, ST&C new 7" csg set @ 752'. Cemented w/225 sacks.
Circulated estimated 25 sx to surface

6/24/62: Welex Gamma - Induction openhole log: 760'-2780'

Most Recent Workover:

7/10/66: MIRU Llaves WS, TOH w/rods & pump, lay down 8 bad rods, 97 total. NDWH, NUBOP, attempt to swab, paraffin blocked, LD 8 jts 2-3/8" tbg, swab to seating nipple, Run #1 fluid level = 1700', rec drlg mud & paraffin, Run #2 FL @ 1700', rec same + oil. Total 6 runs rec 4 bbl mud + paraffin/oil mixture, FL @ 1800'. SDFN
7/11/66: Csg press 100#, swab, FL @ 1650', rec 2 bbl oil, no swab tools. TOH w/tbg, LD mud anchor. TIH w/3-3/4" bit, 4-1/2" string mill, seating nipple & workstring to 2575'. Pump 10 bbl prod water, drop standing valve, press test tbg to 600#, hole in tbg. TOH LD 3 jts, TIH w/RBP, packer & seating nipple, set RBP @ 1774', packer @ 1700', circulated to bradenhead leak, reset packer @ 1731', circ, press up csg, circ leak. Drop standing valve, PT tbg 1200#, ok. Retrieve RBP, set @ 1654', packer @ 1581', circ leak, press up csg, circ leak. Set RBP @ 1531', packer @ 1458', pump down tbg & csg, circ leak. Attempt to set RBP @ 1028', dragging up hole, bad csg, attempt to set @ 776', dragging up hole, bad csg, TOH, SDFN.

External casing packer @ 1795'

External casing packer @ 2233'

Drilled with air to 2780', ran 4-1/2", 9.5#/ft, J-55, ST&C, new, landed @ 2553', in openhole, uncemented, slotted 2460'-2553', 2 openhole packers set @ 1795' & 2233', perf'd "select intervals from 2470'-2533 w/2spf, Oil Fractured Sananstees w/900 BO + 1000# mothballs, put on pump 7/19/62.

8/20/62: Rec load & set BP @ 2147', perf 1810'-20', 1868'-73', & 1879'-91', frac'd Niobrara w/686 BO - no sand, down 4-1/2" csg, pulled BP @ 2147', POP 9/1/62.

9/14/62: Rec load, IP = 35 BOD, no water, GOR = 302 cu ft/bbl.

Hole caved in below 4-1/2" liner

TD = 2780'

PBTD = 2780'

jmh 9/5/2006

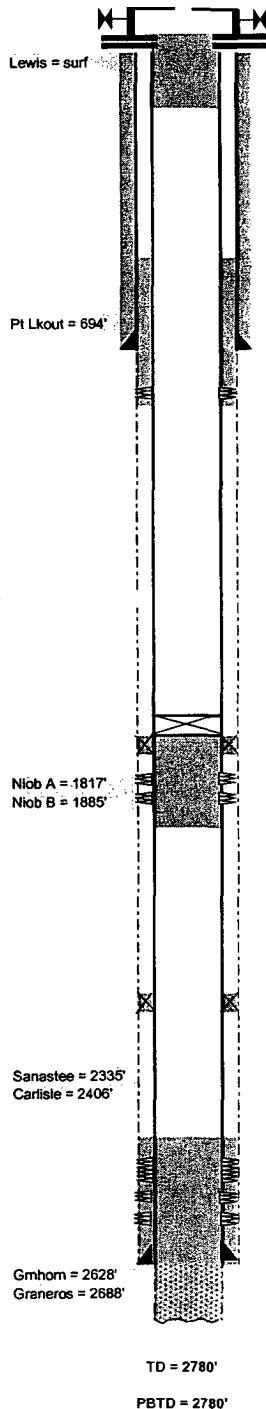
Proposed Plugging Procedure

Benson-Montin-GreerDrilling Corp.

EPCMU #H5 (27) , API #30039067000000

1650' FNL-990' FEL, Sec 5-T26N-R1E

Rio Arriba County, New Mexico



Note: Bottom cement = 50' (Minimum)

Spud: 6/23/62

GL = 7025' ; KB = 7037'

(All depths referenced to KB unless otherwise noted)

Cum. Oil: 35,714 BBL

Cum. Gas: 25,078 MMCF

Cum. Water: 142 BBL

****Note: Top cement = 602' (Minimum)**

8-3/4" hole to 753', ran J-55, 20#, ST&C new 7" csg set @ 752'. Cemented w/225 sacks.
Circulated estimated 25 sx to surface

Squeeze holes @ +/-802'

****Note: Bottom cement = 802' (Minimum), CBL run to verify cement bond across interval 602' - 802'**

Most Recent Workover:

7/10/06: MIRU Llaives WS, TOH w/rods & pump, lay down 8 bad rods, 97 total. NDWH, NUBOP, attempt to swab, paraffin blocked,

LD 8 jts 2-3/8" tbg, swab to seating nipple, Run #1 fluid level = 1700', rec drig mud & paraffin, Run #2 FL @ 1700',

rec same + oil. Total 6 runs rec 4 bbl mud + paraffin/oil mixture, FL @ 1800'. SDFN

7/11/06: Csg press 100#, swab, FL @ 1650', rec 2 bbl oil, no swab tools. TOH w/tbg, LD mud anchor. TIH w/3-3/4" bit,

4-1/2" string mill, seating nipple & workstring to 2575'. Pump 10 bbl prod water, drop standing valve, press

test tbg to 600#, hole in tbg. TOH LD 3 jts, TIH w/RBP, packer & seating nipple, set RBP @ 1774', packer @ 1700',

circulated to bradenhead leak, reset packer @ 1731', circ, press up csg, circ leak. Drop standing valve, PT tbg 1200#,

ok. Retrieve RBP, set @ 1654', packer @ 1581', circ leak, press up csg, circ leak. Set RBP @ 1531', packer @ 1458',

pump down tbg & csg, circ leak. Attempt to set RBP @ 1028', dragging up hole, bad csg, attempt to set @ 776',

dragging up hole, bad csg, TOH, SDFN.

External casing packer @ 1795'

Base perms = 1891'

6/24/62: Welex Gamma - Induction openhole log; 760'-2780'

External casing packer @ 2233'

Top of perms = 2460'

Drilled with air to 2780', ran 4-1/2", 9.5#/ft, J-55, ST&C, new, landed @ 2553', in openhole, uncemented, slotted 2460'-2553',

2 openhole packers set @ 1795' & 2233', perf'd "select intervals from 2470'-2533 w/2spf, Oil Fractured

Sanastee w/900 BO + 1000# mothballs, put on pump 7/19/62.

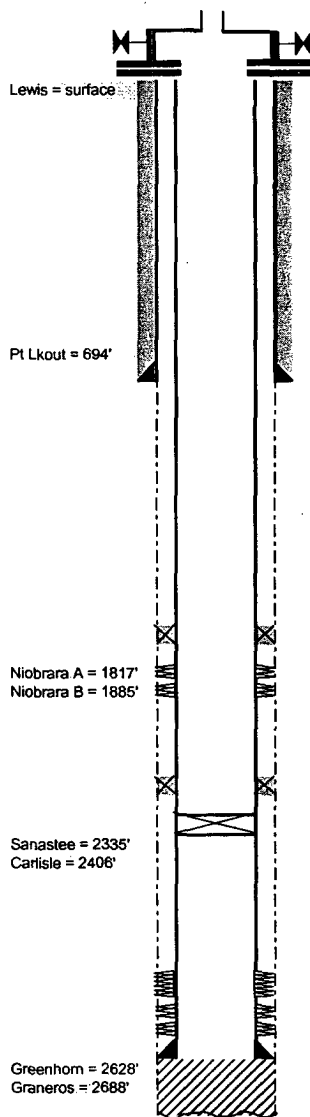
8/20/62: Rec load & set BP @ 2147', perf 1810'-20', 1868'-73', & 1879'-91', frac'd Niobrara w/686 BO - no sand,

down 4-1/2" csg, pulled BP @ 2147', POP 9/1/62.

9/14/62: Rec load, IP = 35 BOD, no water. GOR = 302 cu ft/bbl.

Hole caved in below 4-1/2" liner

jmh 9/5/2006



Spud: 6/23/62

Benson-Montin-GreerDrilling Corp.
EPCMU #H5 (27) , API #30039067000000
1650' FNL-990' FEL, Sec 5-T26N-R1E
Rio Arriba County, New Mexico

GL = 7025' ; KB = 7037'
 (All depths referenced to KB unless otherwise noted)

Cum. Oil: 35,714 BBL
 Cum. Gas: 25,078 MMCF
 Cum. Water: 142 BBL

8-3/4" hole to 753', ran J-55, 20#, ST&C new 7" csg set @ 752'. Cemented w/225 sacks.
 Circulated estimated 25 sx to surface

6/24/62: **Welex Gamma** - Induction openhole log; 760'-2780'

External casing packer @ 1795'

External casing packer @ 2233'

CIBP @ +/- 2300' (?)

Drilled with air to 2780', ran 4-1/2", 9.5#/ft, J-55, ST&C, new, landed @ 2553', in openhole, uncemented, slotted 2460'-2553', 2 openhole packers set @ 1795' & 2233', perf'd "select intervals from 2470'-2533 w/2spf, **Oil Fractured Sanastee w/900 BO + 1000# mothballs**, put on pump 7/18/62.

8/20/62: Rec load & set BP @ 2147', perf 1810'-20', 1868'-73', & 1879'-91', frac'ed Niobrara w/686 BO - no sand, down 4-1/2" csg, pulled BP @ 2147', POP 9/1/62.

9/14/62: Rec load, IP = 35 BOD, no water, GOR = 302 cu ft/bbl.

Hole caved in below 4-1/2" liner