

District II
PO Drawer DD, Artesia, NM 88211-0719

District III
1000 Rio Brazos Rd., Aztec, NM 87410

District IV
PO Box 2088, Santa Fe, NM 87504-2088

OIL CONSERVATION DIVISION
PO Box 2088
Santa Fe, NM 87504-2088

Submit to Appropriate District Office
State Lease - 6 Copies
Fee Lease - 5 Copies

☐ AMENDED REPORT

APPLICATION FOR PERMIT TO DRILL, RE-ENTER, DEEPEN, PLUG BACK, OR ADD A ZONE

¹ Operator Name and Address McElvain Oil and Gas Properties, Inc. 1050 17th Street, Suite 710 Denver, Co 80265 303-893-0933		² OGRID Number 22044
⁴ Property Code 25420	⁵ Property Name BEAR COM 23	³ API Number 30-039-26393 ⁶ W 1

⁷ Surface Location

UL or lot no.	Section	Township	Range	Lot Idn	Feet from the	North/South line	Feet from the	East/West line	County
D	23	26N	2W		1100	NORTH	1100	WEST	RIO ARRIBA

⁸ Proposed Bottom Hole Location If Different From Surface

UL or lot no.	Section	Township	Range	Lot Idn	Feet from the	North/South line	Feet from the	East/West line	County

⁹ Proposed Pool 1
BASIN DAKOTA

¹⁰ Proposed Pool 2

¹¹ Work Type Code N	¹² Well Type Code G	¹³ Cable/Rotary R	¹⁴ Lease Type Code P	¹⁵ Ground Level Elevation 7496'
¹⁶ Multiple NO	¹⁷ Proposed Depth 8363'	¹⁸ Formation DAKOTA	¹⁹ Contractor	²⁰ Spud Date 4/01/00

²¹ Proposed Casing and Cement Program

Hole Size	Casing Size	Casing weight/foot	Setting Depth	Sacks of Cement	Estimated TOC
12.25	9.625	36	500	300 SXS	SURFACE
8.75	5.5/J-55	15.5	6200		
7.875	5.5/J&N	15.5 & 17	8363	1650 SXS-3 STG	SURFACE

22 Describe the proposed program. If this application is to DEEPEN or PLUG BACK give the data on the present productive zone and proposed new productive zone. Describe the blowout prevention program, if any. Use additional sheets if necessary.
McElvain Oil and Gas Properties, Inc proposes to spud in the San Jose formation and drill a 12 1/4" surface hole to 500'. Run and cement 9 5/8" surface casing with cement returns to surface. WOC 12 hours. Pressure test surface casing and BOPE to 600 psig for 30 minutes. Drill an 8 3/4" hole 28 feet into the Mancos formation, reduce hole size to 7 7/8" and drill to TD. A low solids mud system will be used on this well. Induction and Density/Compensated Neutron logs will be run at TD. A minimum of a 2M BOP well control system will be installed and pressure tested to a minimum of 600 psig before drilling out from under surface casing. BOPE will be checked daily as to mechanical operation condition.
Move out rotary rig and move in completion unit. Run cased hole correlation logs. Pressure test production casing to 3500 psig. Perforate select Dakota intervals and stimulate using a fresh water gel based fluid. If logs indicate Dakota is not productive a completion attempt will be made in either the Gallup or the Mesa Verde formation.

23 I hereby certify that the information given above is true and complete to the best of my knowledge and belief.

Signature:

Printed Name: R.E. Fielder

Title: Agent

Date: 3/01/00

Phone: 505-325-5220

OIL CONSERVATION DIVISION

Approved by:

Title: DEPUTY OIL & GAS INSPECTOR, DIST. 43

Approval Date:

MAR - 7 2000

Expiration Date:

MAR - 7 2001

Conditions of Approval:

Attached ☐

District I
PO Box 1980, Hobbs, NM 88241-1980

District II
PO Drawer DD, Artesia, NM 88211-0719

District III
1000 Rio Brazos Rd., Aztec, NM 87410

District IV
PO Box 2088, Santa Fe, NM 87504-2088

State of New Mexico
Energy, Minerals & Natural Resources Department

OIL CONSERVATION DIVISION
PO Box 2088
Santa Fe, NM 87504-2088

Form C-102
Revised February 21, 1994
Instructions on back
Submit to Appropriate District Office
State Lease - 4 Copies
Fee Lease - 3 Copies

☐ AMENDED REPORT

WELL LOCATION AND ACREAGE DEDICATION PLAT

*API Number 30-039-26393		*Pool Code 71599	*Pool Name BASIN DAKOTA
*Property Code 25420	*Property Name BEAR COM 23		*Well Number 1
*OGRIID No. 22044	*Operator Name McELVAIN OIL & GAS PROPERTIES		*Elevation 7495'

¹⁰ Surface Location

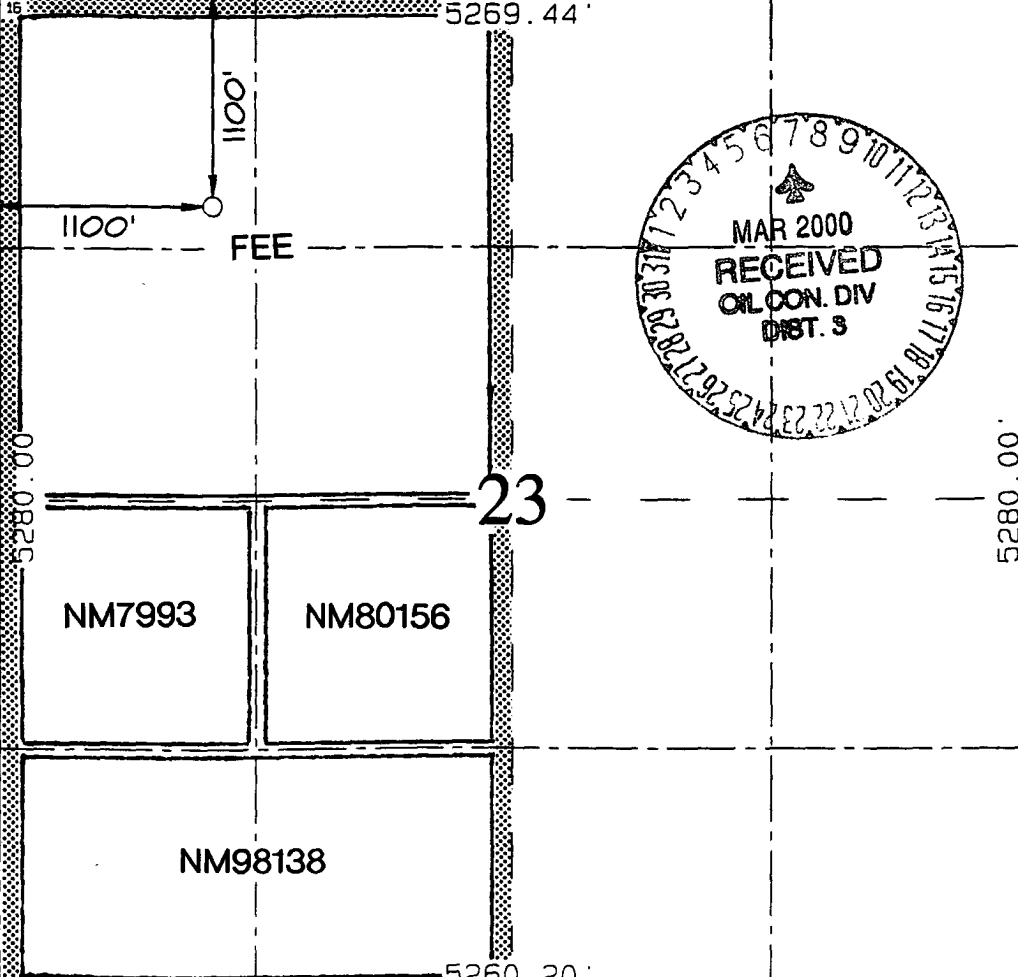
UL or lot no.	Section	Township	Range	Lot Idn	Feet from the	North/South line	Feet from the	East/West line	County
D	23	26N	2W		1100	NORTH	1100	WEST	RIO ARRIBA

¹¹ Bottom Hole Location If Different From Surface

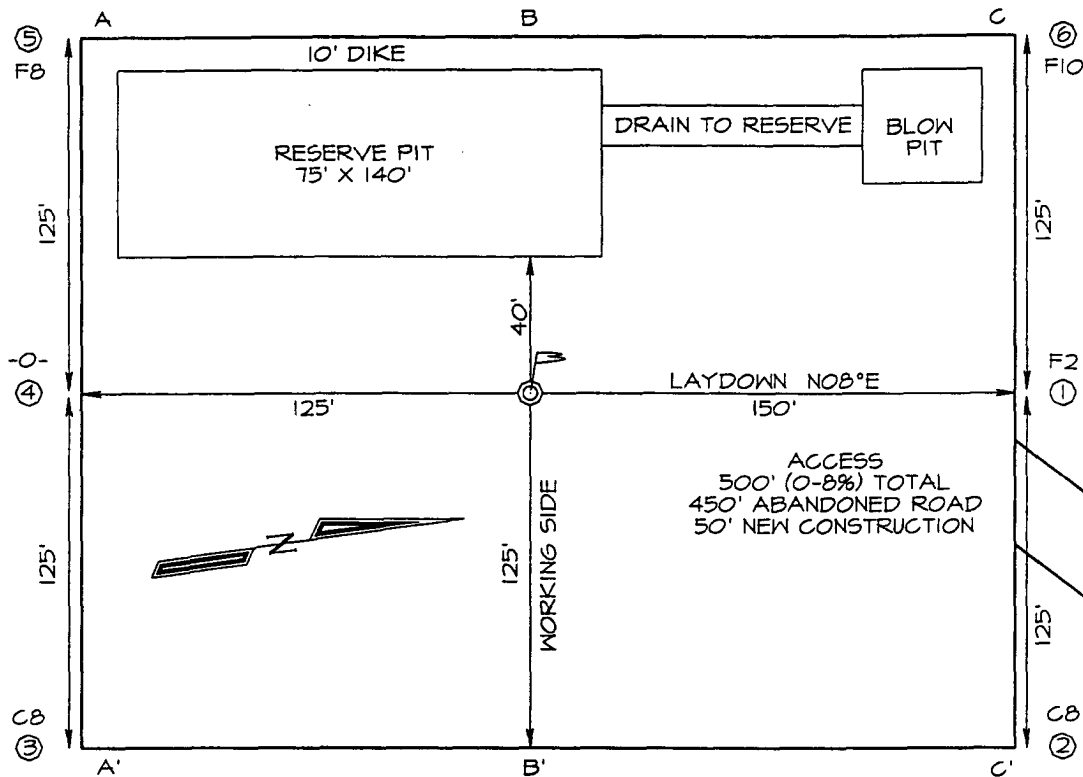
UL or lot no.	Section	Township	Range	Lot Idn	Feet from the	North/South line	Feet from the	East/West line	County

¹² Dedicated Acres 320	¹³ Joint or Infill Y	¹⁴ Consolidation Code C	¹⁵ Order No.
---	---	--	-------------------------

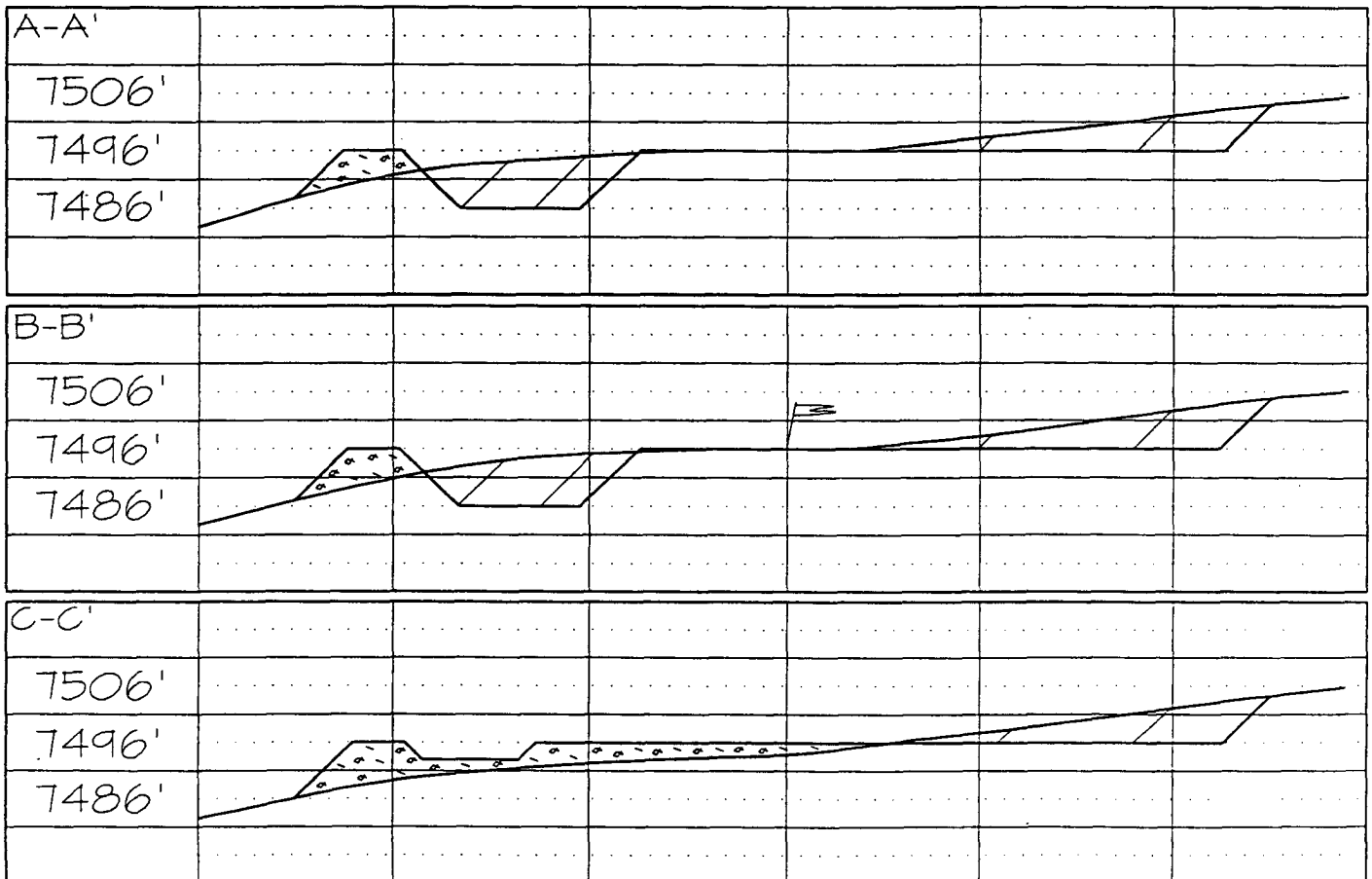
NO ALLOWABLE WILL BE ASSIGNED TO THIS COMPLETION UNTIL ALL INTERESTS HAVE BEEN CONSOLIDATED OR A NON-STANDARD UNIT HAS BEEN APPROVED BY THE DIVISION

	<p>¹⁷ OPERATOR CERTIFICATION I hereby certify that the information contained herein is true and complete to the best of my knowledge and belief.</p> <p>Signature <i>R.E. Fielder</i> R.E. FIELDER</p> <p>Printed Name AGENT</p> <p>Title MARCH 1, 2000</p> <p>Date</p>
	<p>¹⁸ SURVEYOR CERTIFICATION I hereby certify that the well location shown on this plat was plotted from field notes of actual surveys made by me or under my supervision and that the same is true and correct to the best of my belief.</p> <p>NOVEMBER 24, 1999</p> <p>Date of Survey</p> <p>Signature and Seal of Professional Surveyor <i>NEALE C. EDWARDS</i> NEALE C. EDWARDS NEW MEXICO 6857</p> <p>Certification Number 6857</p>

McELVAIN OIL & GAS PROPERTIES BEAR COM 23 #1
1100' FNL, 1100' FWL, SECTION 23, T26N, R2W, NMPM
RIO ARriba COUNTY, NEW MEXICO
GROUND ELEVATION: 7496'



LATITUDE: 36°28'29"
 LONGITUDE: 107°01'29"



Vicinity Map
McElvain Oil & Gas Properties, Inc.
Bear Com 23 No. 1
1100' FNL - 1100' FWL
Section 23, T 26 N, R 2 W, NMPM
Rio Arriba Co., New Mexico

