

UNITED STATES
DEPARTMENT OF THE INTERIOR
BUREAU OF LAND MANAGEMENT

RCVD OCT30/06
OIL CONS. DIV.
DIST. 3

FORM APPROVED
OMB No. 1604-0136
Expires November 30, 2009

APPLICATION FOR PERMIT TO DRILL OR REENTER

2006 JUL 27 PM 3

1a. Type of Work: <input checked="" type="checkbox"/> DRILL <input type="checkbox"/> REENTER		5. Lease Serial No. NM-90472	
1b. Type of Well: <input type="checkbox"/> Oil Well <input checked="" type="checkbox"/> Gas Well <input type="checkbox"/> Other <input checked="" type="checkbox"/> Single Zone <input type="checkbox"/> Multiple Zone		6. If Indian, Allottee or Tribe Name 16	
2. Name of Operator DUGAN PRODUCTION CORP.		7. If Unit or CA Agreement, Name and No. Ellington Com #90	
3a. Address 709 EAST MURRAY DRIVE FARMINGTON, NM 87401		8. Lease Name and Well No. 30-045-33871	
3b. Phone No. (include area code) Ph: 505.325.1821 Fx: 505.327.4613		9. API Well No. 30-045-33871	
4. Location of Well (Report location clearly and in accordance with any State requirements. *) At surface 1,000' FNL & 1320' FEL, Lat. 36.11508 N. At proposed prod. zone Same as above Long. 107.64746 W.		10. Field and Pool, or Exploratory Basin Fruitland Coal	
14. Distance in miles and direction from nearest town or post office* Approx. 70-miles SE of Farmington, New Mexico 87401		11. Sec., T., R., M., or Bk. and Survey or Area B Sec. 26, T22N, R8W NMPM	
15. Distance from proposed location to nearest property or lease line, ft. (Also to nearest drig. unit line, if any) 1000 Feet	16. Mb. of Acres in Lease 640.0 Acres	12. County or Parish San Juan	13. State NM
18. Distance from proposed location to nearest well, drilling, completed, applied for, on this lease, ft. Approx. 2500 Feet	19. Proposed Depth 1010 Feet	17. Spacing Unit dedicated to this well E/2-320.0 Acres	
21. Elevations (Show whether DF, KB, RT, GL, etc.) GL-6766'	20. BLM/BIA Bond No. on file On File	23. Estimated duration 5-Days	
22. Approximate date work will start ASAP			

24. Attachments

The following, completed in accordance with the requirements of Onshore Oil and Gas Order No. 1, shall be attached to this form:

- Well plat certified by a registered surveyor.
- A Drilling Plan.
- A Surface Use Plan (if the location is on National Forest System Lands, the SUPO shall be filed with the appropriate Forest Service Office).
- Bond to cover the operations unless covered by an existing bond on file (see Item 20 above).
- Operator certification
- Such other site specific information and/or plans as may be required by the authorized officer.

25. Signature <i>Kurt Fagrelus</i>	Name (Printed/Typed) KURT FAGRELIUS	Date 7/26/2006
Title GEOLOGIST		
Approved by (Signature) <i>[Signature]</i>	Name (Printed/Typed)	Date 10/27/06
Title <i>AFM</i>	Office <i>FFO</i>	

Application approval does not warrant or certify the applicant holds legal or equitable title to those rights in the subject lease which would entitle the applicant to conduct operations thereon.
Conditions of approval, if any, are attached.

Title 18 U.S.C. Section 1001 and Title 43 U.S.C. Section 1212, make it a crime for any person knowingly and willfully to make to any department or agency of the United States any false, fictitious or fraudulent statements or representations as to any matter within its jurisdiction.

A water based gel-mud will be used to drill surface and production casing hole. Standard 2,000 psi BOP will be used to drill production hole. The Fruitland Coal will be completed from approximately 840' - 855'. The interval will be fracture stimulated.

NMOCB
B

District I
PO Box 1980, Hobbs, NM 88241-1980

District II
PO Drawer 00, Artesia, NM 88211-0719

District III
1000 Rio Brazos Rd., Aztec, NM 87410

District IV
PO Box 2088, Santa Fe, NM 87504-2088

State of New Mexico
Energy, Minerals & Natural Resources Department

OIL CONSERVATION DIVISION
PO Box 2088
Santa Fe, NM 87504-2088

Form C-102
Revised February 21, 1994
Instructions on back
Submit to Appropriate District Office
State Lease - 4 Copies
Fee Lease - 3 Copies

☐ AMENDED REPORT

WELL LOCATION AND ACREAGE DEDICATION PLAT

*API Number 30-045-33871		*Pool Code 71629	*Pool Name BASIN FRUITLAND COAL
*Property Code 36111	*Property Name ELLINGTON COM		*Well Number 90
*GRID No. 006515	*Operator Name DUGAN PRODUCTION CORPORATION		*Elevation 6766'

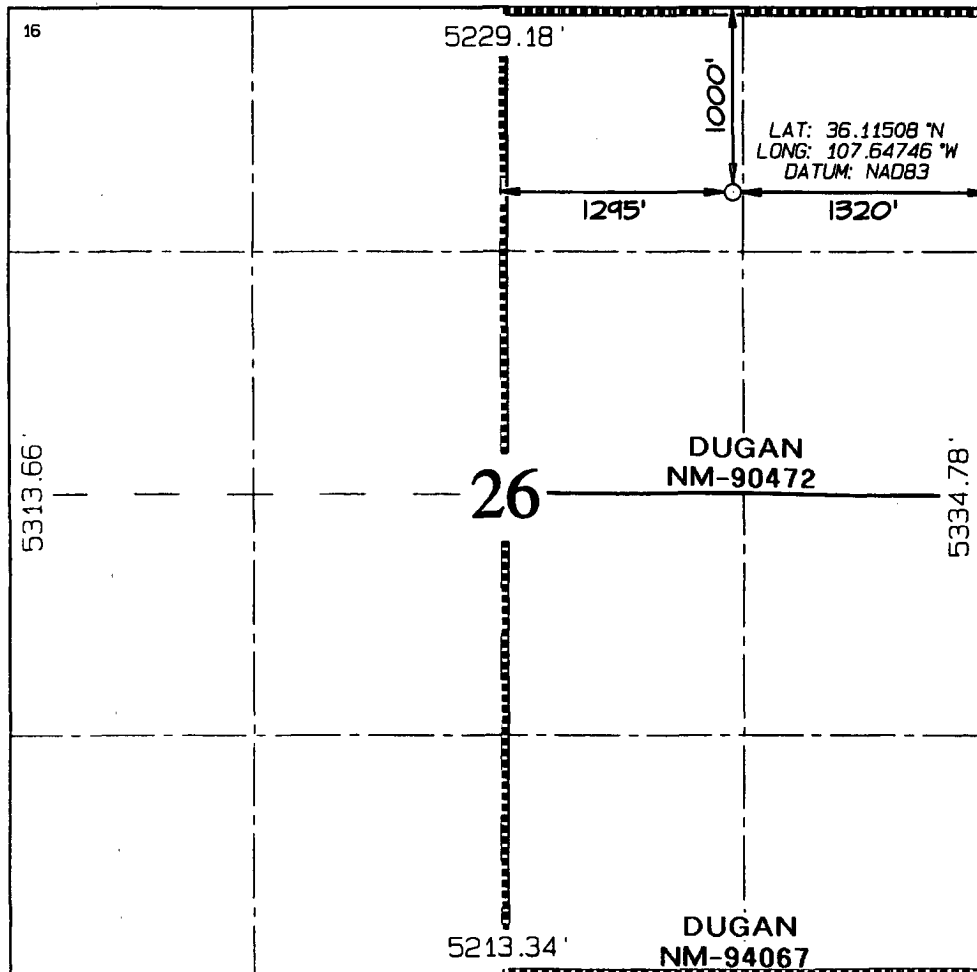
¹⁰ Surface Location

UL or lot no. B	Section 26	Township 22N	Range 8W	Lot Idn	Feet from the	North/South line	Feet from the	East/West line	County
					1000	NORTH	1320	EAST	SAN JUAN

¹¹ Bottom Hole Location If Different From Surface

UL or lot no.	Section	Township	Range	Lot Idn	Feet from the	North/South line	Feet from the	East/West line	County
¹² Dedicated Acres 320.0 Acres - (E/2)					¹³ Joint or Infill	¹⁴ Consolidation Code	¹⁵ Order No.		

NO ALLOWABLE WILL BE ASSIGNED TO THIS COMPLETION UNTIL ALL INTERESTS HAVE BEEN CONSOLIDATED
OR A NON-STANDARD UNIT HAS BEEN APPROVED BY THE DIVISION



¹⁷ OPERATOR CERTIFICATION

I hereby certify that the information contained herein is true and complete to the best of my knowledge and belief

Kurt Fagrelus
Signature

Kurt Fagrelus
Printed Name

Geology
Title

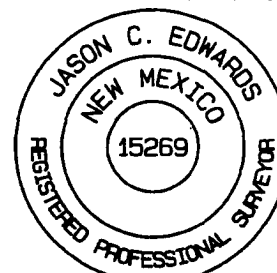
July 26, 2006
Date

¹⁸ SURVEYOR CERTIFICATION

I hereby certify that the well location shown on this plat was plotted from field notes of actual surveys made by me or under my supervision, and that the same is true and correct to the best of my belief

Date of Survey: JUNE 8, 2006

Signature and Seal of Professional Surveyor



JASON C. EDWARDS
Certificate Number 15269

Q (13' fr line)

Submit 3 Copies To Appropriate District Office
District I
1625 N. French Dr., Hobbs, NM 88240
District II
1301 W. Grand Ave., Artesia, NM 88210
District III
1000 Rio Brazos Rd., Aztec, NM 87410
District IV
1220 S. St. Francis Dr., Santa Fe, NM 87505

State of New Mexico
Energy, Minerals and Natural Resources

Form C-103
May 27, 2004

OIL CONSERVATION DIVISION
1220 South St. Francis Dr.
Santa Fe, NM 87505

WELL API NO.	30-045-33871
5. Indicate Type of Lease Federal <input checked="" type="checkbox"/> STATE <input type="checkbox"/> FEE <input type="checkbox"/>	
6. State Oil & Gas Lease No.	Federal NM-90472
7. Lease Name or Unit Agreement Name	Ellington Com
8. Well Number	90
9. OGRID Number	006515
10. Pool name or Wildcat	Basin Fruitland Coal
11. Elevation (Show whether DR, RKB, RT, GR, etc.)	GL-6/66

SUNDRY NOTICES AND REPORTS ON WELLS
(DO NOT USE THIS FORM FOR PROPOSALS TO DRILL OR TO DEEPEN OR PLUG BACK TO A DIFFERENT RESERVOIR. USE "APPLICATION FOR PERMIT" (FORM C-101) FOR SUCH PROPOSALS.)

1. Type of Well: Oil Well ☐ Gas Well ☒ Other

2. Name of Operator Dugan Production Corp.

3. Address of Operator 709 East Murray Drive, Farmington, NM

4. Well Location
Unit Letter B : 1000 feet from the north line and 1320 feet from the east line
Section 26 Township 22N Range 8W NMPM County San Juan

Pit or Below-grade Tank Application ☒ or Closure ☐
Pit type Drilling Depth to Groundwater +100' Distance from nearest fresh water well +1000' Distance from nearest surface water +200'
Pit Liner Thickness: 12 mil Below-Grade Tank: Volume bbls; Construction Material Synthetic

12. Check Appropriate Box to Indicate Nature of Notice, Report or Other Data

NOTICE OF INTENTION TO:
PERFORM REMEDIAL WORK ☐ PLUG AND ABANDON ☐
TEMPORARILY ABANDON ☐ CHANGE PLANS ☐
PULL OR ALTER CASING ☐ MULTIPLE COMPL ☐

SUBSEQUENT REPORT OF:
REMEDIAL WORK ☐ ALTERING CASING ☐
COMMENCE DRILLING OPNS. ☐ P AND A ☐
CASING/CEMENT JOB ☐

OTHER: Reserve pit for drilling (lined) ☒

OTHER: ☐

13. Describe proposed or completed operations. (Clearly state all pertinent details, and give pertinent dates, including estimated date of starting any proposed work). SEE RULE 1103. For Multiple Completions: Attach wellbore diagram of proposed completion or recompletion.

A water based gel-mud will be used to drill surface and production casing hole. Standard 2,000 psi BOP will be used to drill production hole. The Fruitland Coal will be completed from approximately 840' - 855'. The interval will be fracture stimulated.

I hereby certify that the information above is true and complete to the best of my knowledge and belief. I further certify that any pit or below-grade tank has been/will be constructed or closed according to NMOCD guidelines ☒, a general permit ☐ or an (attached) alternative OCD-approved plan ☐.

SIGNATURE Kurt Fagrelus TITLE Geology DATE 7/26/2006
Kurt Fagrelus ktfagrelus@duganproduction.com 505-325-1821
Type or print name E-mail address: Telephone No.

For State Use Only

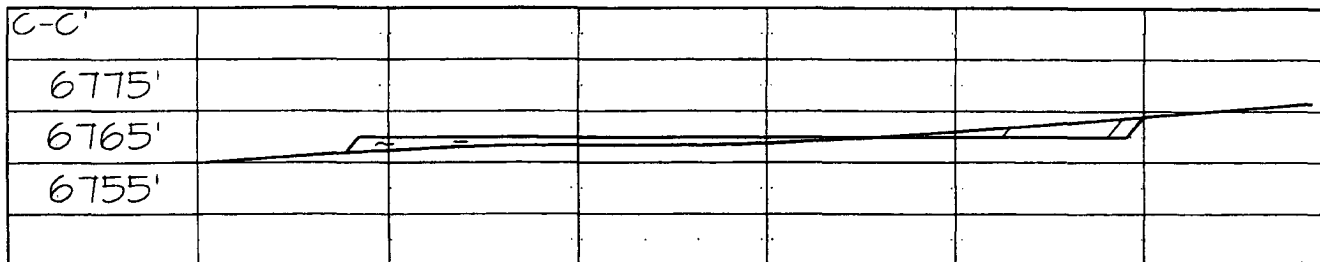
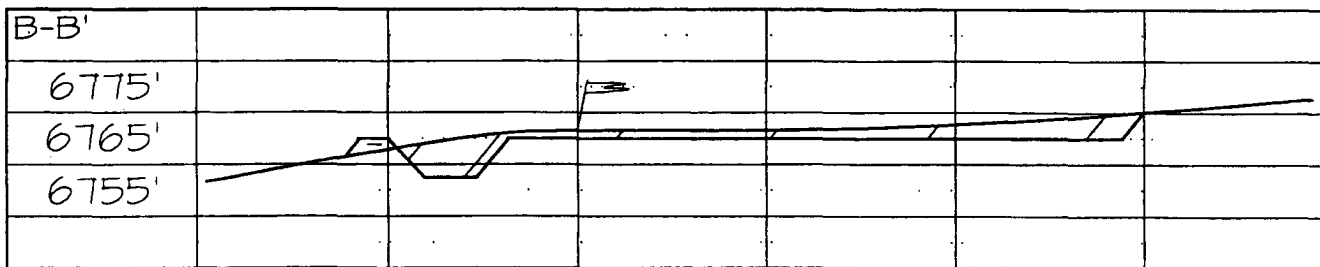
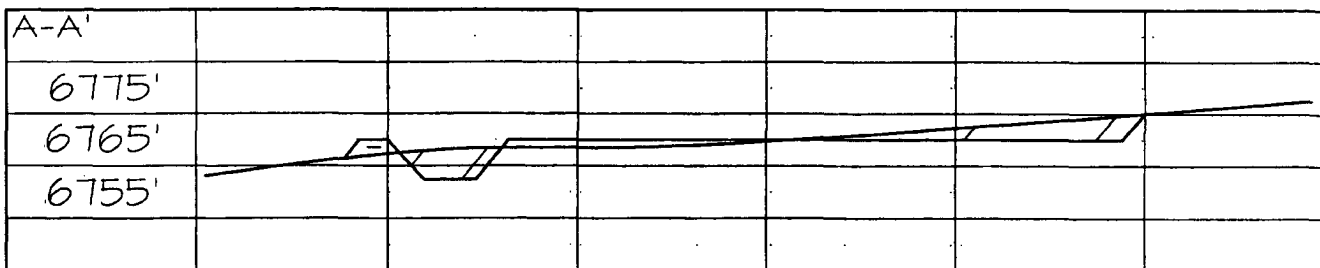
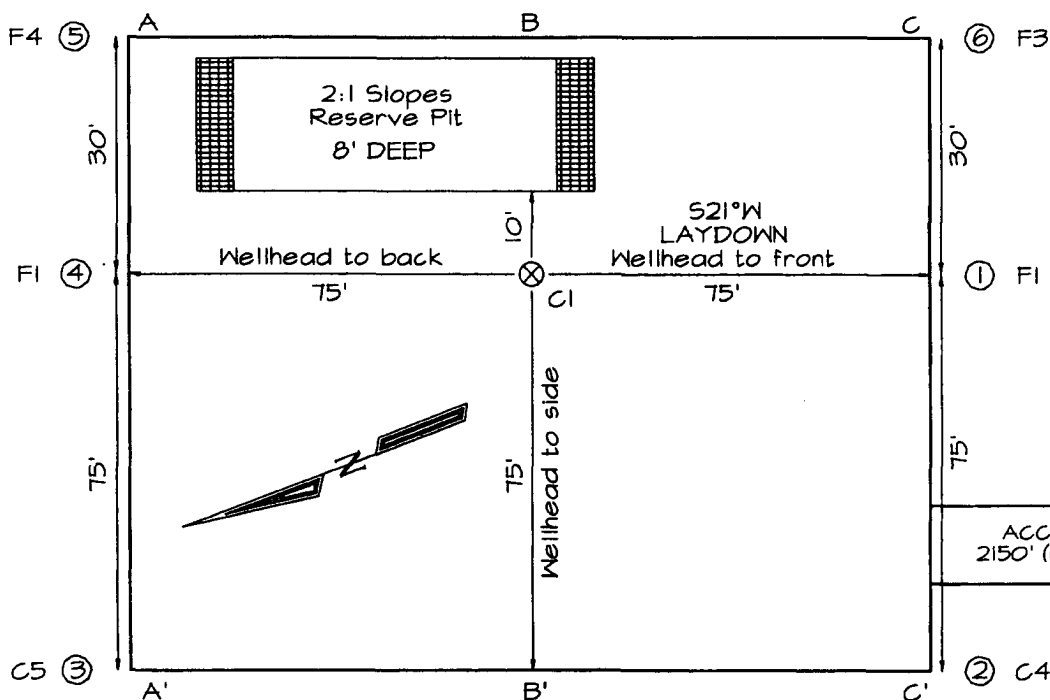
APPROVED BY: [Signature] TITLE DEPUTY OIL & GAS INSPECTOR, DIST. # DATE OCT 30 2006
Conditions of Approval (if any):

DUGAN PRODUCTION CORPORATION ELLINGTON COM #90
 1000' FNL & 1320' FEL, SECTION 26, T22N, R8W, NMPM
 SAN JUAN COUNTY, NEW MEXICO ELEVATION: 6766'

LATITUDE: 36.11508° N
 LONGITUDE: 107.64746° W
 DATUM: NAD1983

PLAT NOTE:

SURFACE OWNER
 Bureau of Land
 Management



Note: Contractor should call One-Call for location of any marked or unmarked buried pipelines or cables on well pad and/or access road at least two (2) working days prior to construction

EXHIBIT B
OPERATIONS PLAN
Ellington Com #90

APPROXIMATE FORMATION TOPS:

Ojo Alamo	120'	Pictured Cliffs	855'
Kirtland	205'		
Fruitland	555'	Total Depth	1010'

Catch samples every 10 feet from 800 feet to total depth.

LOGGING PROGRAM:

Run cased hole GR-CCL-CNL from total depth to surface.

CASING PROGRAM:

<u>Hole</u> <u>Size</u>	<u>Casing</u> <u>Size</u>	<u>Wt./ft.</u>	<u>Setting</u> <u>Depth</u>	<u>Grade and</u> <u>Condition</u>
12-1/4"	8-5/8"	24#	120'	J-55
7"	5-1/2"	14#	1010'	J-55

Plan to drill a 12-1/4" hole and set 120' of 8-5/8" OD, 24#, J-55 surface casing. Then plan to drill a 7" hole to total depth with gel-water mud program to test the Fruitland Coal. 5-1/2", 14#, J-55 production casing will be run and cemented. Cased hole GR-CCL-CNL log will be run. Productive zone will be perforated and fractured. After frac, the well will be cleaned out and production equipment will be installed.

CEMENTING PROGRAM:

Surface: Cement to surface with 70 cf Class B + 2% CaCl₂.
Circulate to surface.

Production Stage-Cement with 100 cf 2% Lodense with
1/4# celloflake/sx followed by 55 cf Class "B" with
1/4# celloflake/sx.
Total cement slurry for production stage is 155 cf.
Circulate cement to surface.

An adequate spacer will be pumped ahead of the cement slurry to help prevent mud contamination of the cement. An adequate number of casing centralizers will be run through usable water zones to ensure that casing is centralized through these zones. The adequate number of centralizers will be determined based on API standards. Centralizers to impart a swirling action around the casing will be used just below and into the base of the

lowest usable water zone. These devices will assist mud displacement, increase cement bonding potential and create an effective hydraulic seal. A chronological log will be kept which records the pump rate, pump pressure, slurry density, and slurry volume for the cement job. The log will be sent to the BLM after completion of the job.

WELLHEAD EQUIPMENT:

Huber 8-5/8"x5-1/2" casing head, 1000# WP, tested to 2000#.

Huber 5-1/2"x2-7/8" tubing head, 1000# WP, tested to 2000#.

BOP and Related Equipment will include for a 2000 psi system:

(Exhibit D)

Annular preventer, double ram, or 2 rams with one being blind and one being a pipe ram.

Kill line (2" minimum)

1 kill line valve (2" minimum)

1 choke line valve

2 chokes

Upper kelly cock valve with handle available

Safety valve and subs to fit all drill string connections in use.

Pressure gauge on choke manifold.

2" minimum choke line.

Fill-up line.

Contacts:

Dugan Prod.Corp. Office & Radio Dispatch: 325-1821

Mark Brown	327-3632 (H)
	320-8247 (M)

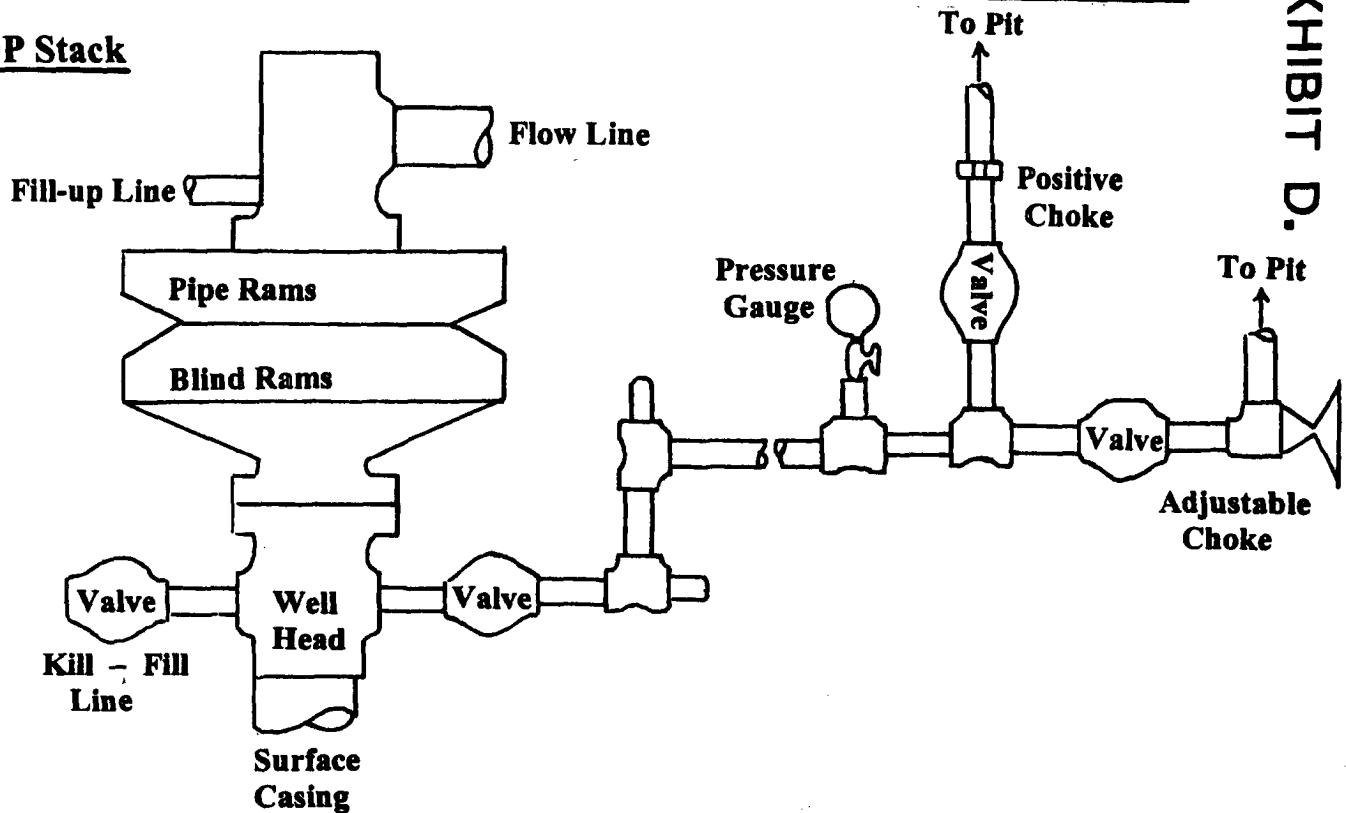
Kurt Fagrelus	325-4327 (H)
	320-8248 (M)

John Alexander	325-6927 (H)
	320-1935 (M)

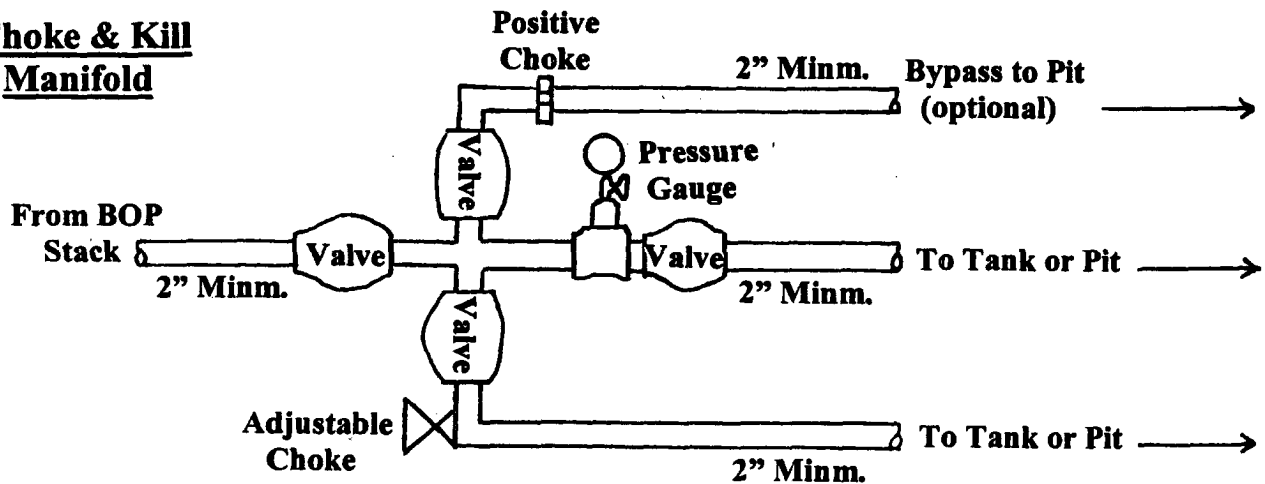
Well Control Equipment Schematic for 2,000 psi BOP

EXHIBIT D.

BOP Stack



Choke & Kill Manifold



Working Pressure for all equipment is 2,000 psi or greater

DUGAN PRODUCTION CORP.
ELLINGTON COM #90