

Submit 3 Copies To Appropriate District
Office
District I
1625 N. French Dr., Hobbs, NM 88240
District II
811 South First, Artesia, NM 88210
District III
1000 Rio Brazos Rd., Aztec, NM 87410
District IV
1220 S. St. Francis Dr., Santa Fe, NM
87505

State of New Mexico
Energy, Minerals and Natural Resources

OIL CONSERVATION DIVISION
1220 South St. Francis Dr.
Santa Fe, NM 87505

Form C-103
Revised March 25, 1999

WELL API NO. 30-045-07469
5. Indicate Type of Lease STATE <input checked="" type="checkbox"/> FEE <input type="checkbox"/>
6. State Oil & Gas Lease No.
7. Lease Name or Unit Agreement Name: Jones A LS (Also filed on BLM Form 3160-5 Federal Lease NM - 078390)
8. Well No. 3
9. Pool name or Wildcat Blanco Mesaverde & Otero Chacra

SUNDRY NOTICES AND REPORTS ON WELLS
(DO NOT USE THIS FORM FOR PROPOSALS TO DRILL OR TO DEEPEN OR PLUG BACK TO A
DIFFERENT RESERVOIR. USE "APPLICATION FOR PERMIT" (FORM C-101) FOR SUCH
PROPOSALS.)

1. Type of Well:
Oil Well ☐ Gas Well ☒ Other ☐

2. Name of Operator
BP America Production Company Attn: **Mary Corley**

3. Address of Operator
P.O. Box 3092 Houston, TX 77253

4. Well Location
Unit Letter **G** **1460** feet from the **North** line and **1460** feet from the **East** line
Section **15** Township **28N** Range **08W** NMPM **San Juan** County
10. Elevation (Show whether DR, RKB, RT, GR, etc.)
5876' GR

11. Check Appropriate Box to Indicate Nature of Notice, Report or Other Data

NOTICE OF INTENTION TO:		SUBSEQUENT REPORT OF:	
PERFORM REMEDIAL WORK <input type="checkbox"/>	PLUG AND ABANDON <input type="checkbox"/>	REMEDIAL WORK <input type="checkbox"/>	ALTERING CASING <input type="checkbox"/>
TEMPORARILY ABANDON <input type="checkbox"/>	CHANGE PLANS <input type="checkbox"/>	COMMENCE DRILLING OPNS. <input type="checkbox"/>	PLUG AND ABANDONMENT <input type="checkbox"/>
PULL OR ALTER CASING <input type="checkbox"/>	MULTIPLE COMPLETION <input type="checkbox"/>	CASING TEST AND CEMENT JOB <input type="checkbox"/>	
OTHER: Downhole Commingle <input checked="" type="checkbox"/>		OTHER: <input type="checkbox"/>	

12. Describe proposed or completed operations. (Clearly state all pertinent details, and give pertinent dates, including estimated date of starting any proposed work). SEE RULE 1103. For Multiple Completions: Attach wellbore diagram of proposed completion or recompletion.

BP America Production Company request permission to recomplete the subject well into the Otero Chacra and commingle production Downhole with the existing Blanco Mesaverde as per the attached procedure.

The Blanco Mesaverde (72319) & Otero Chacra (82329) Pools are Pre-Approved Pools for Downhole Commingling per NMOCDC order R-11363. The working and overriding royalty interest owners in the proposed commingled pools are identical, therefore no further notification of this application is required.

Production is proposed to be allocated based on the subtraction method using the projected future decline for production from the Mesaverde. That production shall serve as a base for production subtracted from the total production for the commingled well. The balance of the production will be attributed to the Chacra. Attached is the future production decline estimates for the Mesaverde.

Commingling Production Downhole in the subject well from the proposed Pools with not reduce the value of the total remaining production.

I hereby certify that the information above is true and complete to the best of my knowledge and belief.

SIGNATURE Mary Corley TITLE Sr. Regulatory Analyst DATE 08/05/2003

Type or print name Mary Corley Telephone No. 281-366-4491

(This space for State use)

APPROVED BY [Signature] TITLE DEPUTY OIL & GAS INSPECTOR, DIST. 3 DATE AUG 13 2003

Conditions of approval, if any:

District I
1625 N. French Dr., Hobbs, NM 88240

District II
811 South First, Artesia, NM 88210

District III
1000 Rio Brazos Rd., Aztec, NM 87410

District IV
2040 South Pacheco, Santa Fe, NM 87505

State of New Mexico
Energy, Minerals & Natural Resources Department

OIL CONSERVATION DIVISION
2040 South Pacheco
Santa Fe, NM 87505

Form C-102
Revised August 15, 2000

Submit to Appropriate District Office
State Lease - 4 Copies
Fee Lease - 3 Copies

AMENDED REPORT

WELL LOCATION AND ACREAGE DEDICATION PLAT

¹ API Number 30-045-07469	² Pool Code 82329	³ Pool Name Otero Chacra
⁴ Property Code 000759	⁵ Property Name Jones A LS	⁶ Well Number 3
⁷ OGRID No. 000778	⁸ Operator Name BP America Production Company	⁹ Elevation 5876' GR

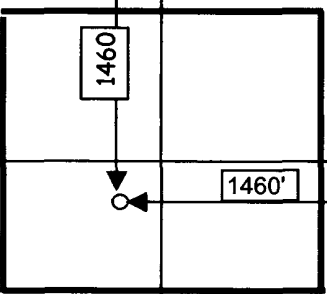
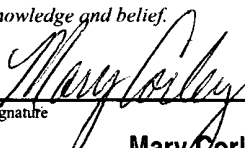
¹⁰ Surface Location

UL or lot no. Unit G	Section 15	Township 28N	Range 08W	Lot Idn	Feet from 1460'	North/South North	Feet from 1460'	East/West East	County San Juan
-------------------------	---------------	-----------------	--------------	---------	--------------------	----------------------	--------------------	-------------------	--------------------

¹¹ Bottom Hole Location If Different From Surface

UL or lot no.	Section	Township	Range	Lot Idn	Feet from	North/South	Feet	East/West	County
¹² Dedicated Acres 160	¹³ Joint or Infill	¹⁴ Consolidation Code	¹⁵ Order No.						

NO ALLOWABLE WILL BE ASSIGNED TO THIS COMPLETION UNTIL ALL INTERESTS HAVE BEEN CONSOLIDATED OR A NON-STANDARD UNIT HAS BEEN APPROVED BY THE DIVISION

			¹⁷ OPERATOR CERTIFICATION I hereby certify that the information contained herein is true and complete to the best of my knowledge and belief.  Signature Mary Corley Printed Name Sr. Regulatory Analyst Title 08/06/2003 Date
			¹⁸ SURVEYOR CERTIFICATION I hereby certify that the well location shown on this plat was plotted from field notes of actual surveys made by me or under my supervision, and that the same is true and correct to the best of my belief. 00/00/1957 Date of Survey Signature and Seal of Professional Surveyor: C O Walker Certificate Number

Jones A LS #3 Recompletion Procedure

Procedure:

1. Check anchors. MIRU workover rig.
2. Check and record tubing, casing, and bradenhead pressures.
3. Blow down well. Kill with 2% KCL water ONLY if necessary.
4. Nipple down WH. NU BOPs.
5. Tag for fill and tally OH with 2-3/8" production tubing currently set at 4768'.
6. TIH with bit and scraper for 5-1/2" casing to 4775'. Work casing scraper across Mesaverde perforations from 4035' – 4775' and across Chacra perforations from 3340' – 3525'.
7. RU WL unit. RIH with 5-1/2" CIBP. Set CIBP at 3600'.
8. Load well with 2% KCL.
9. Pressure test casing to 2500 psi with rig pumps.
10. RIH with 3-1/8" casing guns. Perforate Chacra formation (correlate to GR log).

Chacra Perforations, 2 spf

3348' – 3353' (5')

3392' – 3396' (4')

3474' – 3479' (5')

3522' – 3526' (4')

11. RU wellhead isolation tool and Schlumberger frac equipment.
12. Spearhead 500 gal 15% HCL, establish injection rate, and proceed with fracture stimulation according to Schlumberger schedule.
13. Flowback frac immediately.
14. TIH with tubing and bit. Cleanout fill and drill bridge plug set at 3600'. Cleanout fill to PBSD at 4780'. Blow well dry at PBSD.
15. Rabbit tubing and RIH with 2-3/8" production tubing.
16. Land 2-3/8" production tubing at 4750'.
17. ND BOP's. NU WH. Test well for air. Return well to production and commingle Mesaverde and Chacra.

Jones A LS #3

Sec 15, T28N, R8W

API #: 30-04507469

History:

Completed Feb 1956

Jan 2001: Replaced tbg and CO to PBTD

Mar 2003: Attempted Menefee payadd, frac job
circulated thru CH perfs and was
aborted.

MV perforations

Cliffhouse

4034' - 4044', w/ 6 SPF, frac'd w/ 55,000# sand

4080' - 4090', w/ 6 SPF, frac'd w/ 55,000# sand

4142' - 4160', w/ 6 SPF, frac'd w/ 55,000# sand

Menefee: Perfs: 4210' - 4523' (frac circulated)

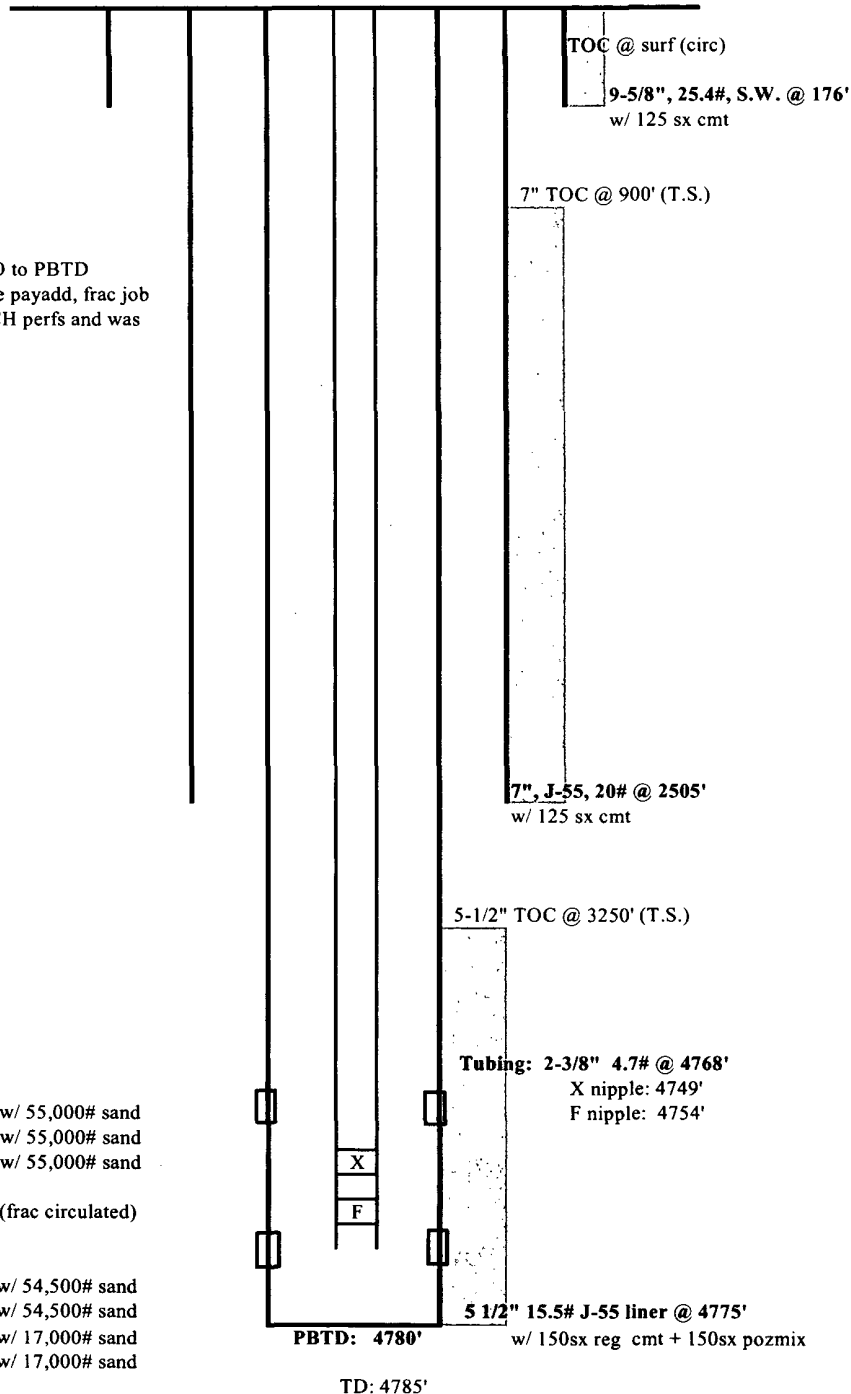
Point Lookout

4620 - 4631', w/ 6 SPF, frac'd w/ 54,500# sand

4654 - 4664', w/ 6 SPF, frac'd w/ 54,500# sand

4732 - 4742', w/ 6 SPF, frac'd w/ 17,000# sand

4763 - 4773', w/ 6 SPF, frac'd w/ 17,000# sand



updated: 6/18/03 JAD

Jones A LS 3

Future Production Decline Estimate Mesaverde

Daily Rates

$\ln(Qf/Qi) = -dt$
 $Qf = 107$
 $Qi = 111$
 $rate = 107$
 $time = 5$
 $dt = -0.036701367$
 $decline = -0.785409251$

Well down for well workover

Month	Gas Volume
Jan-2002	125
Feb-2002	93
Mar-2002	97
Apr-2002	111
May-2002	111
Jun-2002	117
Jul-2002	139
Aug-2002	120
Sep-2002	107
Oct-2002	97
Nov-2002	90
Dec-2002	110
Jan-2003	112
Feb-2003	98
Mar-2003	60
Apr-2003	95
May-2003	91
Jun-2003	80
Jul-2003	79
Aug-2003	78
Sep-2003	78
Oct-2003	77
Nov-2003	76
Dec-2003	75
Jan-2004	75
Feb-2004	74
Mar-2004	73
Apr-2004	72
May-2004	71
Jun-2004	71
Jul-2004	70
Aug-2004	69
Sep-2004	68
Oct-2004	67
Nov-2004	67
Dec-2004	66

Month	Gas Volume
Jan-2005	65
Feb-2005	64
Mar-2005	64
Apr-2005	63
May-2005	62
Jun-2005	61
Jul-2005	60
Aug-2005	60
Sep-2005	59
Oct-2005	58
Nov-2005	57
Dec-2005	56
Jan-2006	56
Feb-2006	55
Mar-2006	54
Apr-2006	53
May-2006	53
Jun-2006	52
Jul-2006	51
Aug-2006	50
Sep-2006	49
Oct-2006	49
Nov-2006	48
Dec-2006	47
Jan-2007	46
Feb-2007	45
Mar-2007	45
May-2007	44
Jun-2007	43
Jul-2007	42
Aug-2007	42
Sep-2007	41
Oct-2007	40
Nov-2007	39
Dec-2007	38
Jan-2008	38

Month	Gas Volume
Feb-2008	37
Mar-2008	36
Apr-2008	35
May-2008	34
Jun-2008	34
Jul-2008	33
Aug-2008	32
Sep-2008	31
Oct-2008	31
Nov-2008	30
Dec-2008	29
Jan-2009	28
Feb-2009	27
Mar-2009	27
Apr-2009	26
May-2009	25
Jun-2009	24
Jul-2009	23
Aug-2009	23
Sep-2009	22
Oct-2009	21
Nov-2009	20
Dec-2009	20
Jan-2010	19
Feb-2010	18
Mar-2010	17
Apr-2010	16
May-2010	16
Jun-2010	15
Jul-2010	14
Aug-2010	13
Sep-2010	12
Oct-2010	12
Nov-2010	11
Dec-2010	10
Jan-2011	9

Future Production Decline Estimate Mesaverde

Daily Rates

Month	Gas Volume
Feb-2011	9
Mar-2011	8
Apr-2011	7
May-2011	6
Jun-2011	5
Jul-2011	5
Aug-2011	4
Sep-2011	3
Oct-2011	2
Nov-2011	1
Dec-2011	1
Jan-2012	0
Feb-2012	0
Mar-2012	0
Apr-2012	0
May-2012	0
Jun-2012	0
Jul-2012	0
Aug-2012	0
Sep-2012	0
Oct-2012	0
Nov-2012	0
Dec-2012	0
Jan-2013	0
Feb-2013	0
Mar-2013	0
Apr-2013	0
May-2013	0
Jun-2013	0
Jul-2013	0
Aug-2013	0
Sep-2013	0
Oct-2013	0
Nov-2013	0
Dec-2013	0
Jan-2014	0