

UNITED STATES
DEPARTMENT OF THE INTERIOR
BUREAU OF LAND MANAGEMENT

APPLICATION FOR PERMIT TO DRILL, DEEPEN, OR PLUG BACK

RECEIVED

1a. Type of Work DRILL	5. Lease Number NMSF079320	2002 JUL 21 PM 1:19
1b. Type of Well GAS	Unit Reporting Number 070 Farmington, NM	6. If Indian, All. or Tribe
2. Operator BURLINGTON RESOURCES Oil & Gas Company	7. Unit Agreement Name	
3. Address & Phone No. of Operator PO Box 4289, Farmington, NM 87499 (505) 326-9700	8. Farm or Lease Name Eagle	9. Well Number 777S
4. Location of Well 960' FSL, 1825' FEL Latitude 36° 59.6542'N, Longitude 107° 44.7428'W	10. Field, Pool, Wildcat Basin Fruitland Coal	11. Sec., Twn, Rge, Mer. (NMPM) 0 Sec. 11, T-32-N, R-9-W API # 30-045-31791
14. Distance in Miles from Nearest Town 21.8 miles to JCT HWY 550/173 in Aztec, NM	12. County San Juan	13. State NM
15. Distance from Proposed Location to Nearest Property or Lease Line 960'	17. Acres Assigned to Well 369.19 AII	
16. Acres in Lease		
18. Distance from Proposed Location to Nearest Well, Drlg, Compl, or Applied for on this Lease 2480'	20. Rotary or Cable Tools Rotary	
19. Proposed Depth 3828'		
21. Elevations (DF, FT, GR, Etc.) 6891' GR	22. Approx. Date Work will Start	
23. Proposed Casing and Cementing Program See Operations Plan attached		
24. Authorized by: <u>David J. Mankiewicz</u> Regulatory/Compliance Supervisor	Date	7-8-03

PERMIT NO. _____

APPROVAL DATE _____

APPROVED BY /s/ David J. Mankiewicz

TITLE _____

DATE AUG 22 2003

Archaeological Report to be submitted

Threatened and Endangered Species Report to be submitted

NOTE: This format is issued in lieu of U.S. BLM Form 3160-3

Title 18 U.S.C. Section 1001, makes it a crime for any person knowingly and willfully to make to any department or agency of the United States any false, fictitious or fraudulent statements or presentations as to any matter within its jurisdiction.

DRILLING OPERATIONS AUTHORIZED ARE
SUBJECT TO COMPLIANCE WITH ATTACHED
"GENERAL REQUIREMENTS".

NMOCD

This action is subject to technical and
procedural review pursuant to 43 CFR 3165.3
and appeal pursuant to 43 CFR 3165.4

DISTRICT I
1625 N. French Dr., Hobbs, N.M. 88240

State of New Mexico
Energy, Minerals & Natural Resources Department

Form C-102
Revised August 15, 2000

DISTRICT II
811 South First, Artesia, N.M. 88210

DISTRICT III
1000 Rio Brazos Rd., Aztec, N.M. 87410

DISTRICT IV
2040 South Pacheco, Santa Fe, NM 87505

OIL CONSERVATION DIVISION

2040 South Pacheco
Santa Fe, NM 87505

Submit to Appropriate District Office
State Lease - 4 Copies
Fee Lease - 3 Copies

☐ AMENDED REPORT

WELL LOCATION AND ACREAGE DEDICATION PLAT

*API Number 30-045- 31370 31791	*Pool Code 71629	*Pool Name Basin Fruitland Coal
*Property Code 6964	*Property Name EAGLE	*Well Number 777S
*GRID No. 14538	*Operator Name BURLINGTON RESOURCES OIL & GAS, INC.	*Elevation 6891'

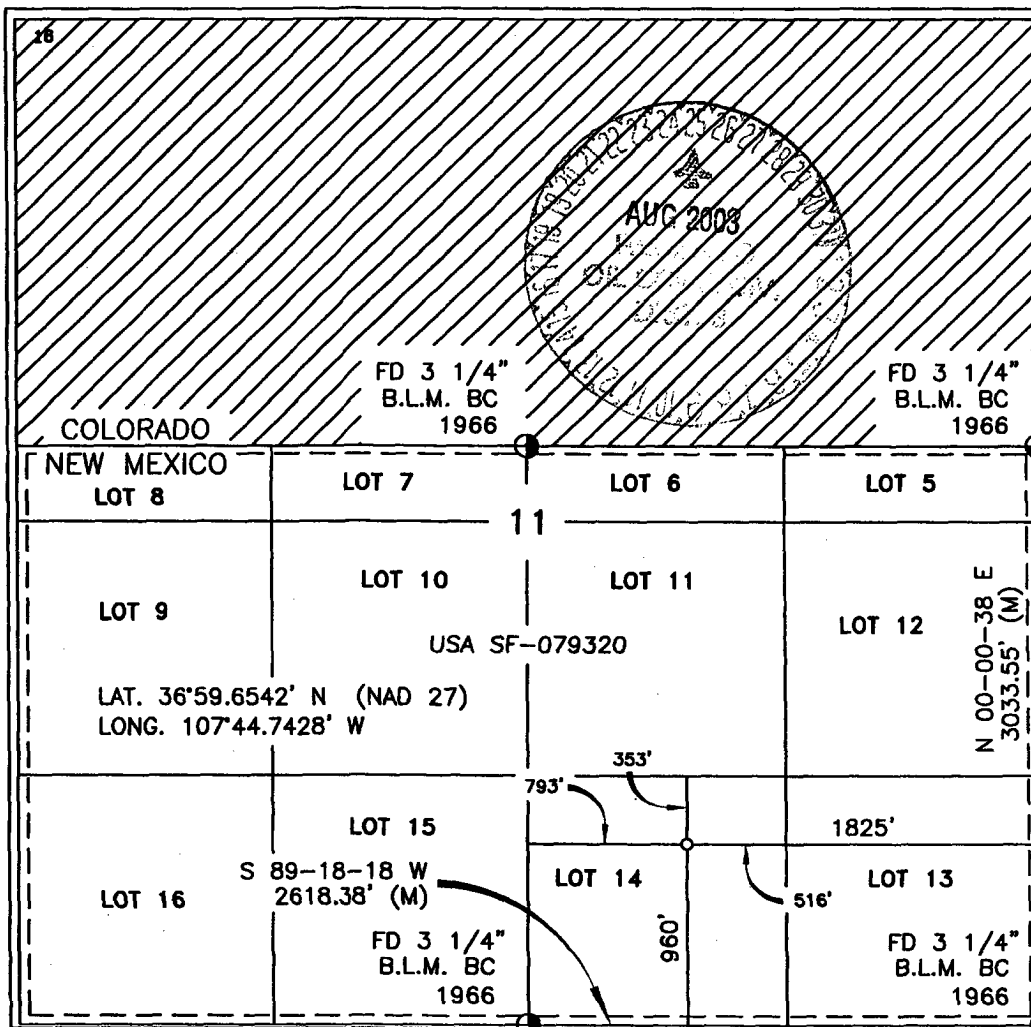
¹⁰ Surface Location

UL or lot no.	Section	Township	Range	Lot Idn	Feet from the	North/South line	Feet from the	East/West line	County
0	11	32-N	9-W		960'	SOUTH	1825'	EAST	SAN JUAN

¹¹ Bottom Hole Location If Different From Surface

UL or lot no.	Section	Township	Range	Lot Idn	Feet from the	North/South line	Feet from the	East/West line	County
¹² Dedicated Acres 369.19			¹³ Joint or Infill		¹⁴ Consolidation Code		¹⁵ Order No.		

NO ALLOWABLE WILL BE ASSIGNED TO THIS COMPLETION UNTIL ALL INTERESTS HAVE BEEN CONSOLIDATED
OR A NON-STANDARD UNIT HAS BEEN APPROVED BY THE DIVISION



¹⁷ OPERATOR CERTIFICATION

I hereby certify that the information contained herein is true and complete to the best of my knowledge and belief

Signature
Peggy Cole
Printed Name
Regulatory Supervisor
Title
Date

¹⁸ SURVEYOR CERTIFICATION

I hereby certify that the well location shown on this plat was plotted from field notes of actual surveys made by me or under my supervision, and that the same is true and correct to the best of my belief.

Date of Survey
Signature and Seal of Professional Surveyor:
14827
Certificate Number

Reissued to show revised location.

OPERATIONS PLAN

Well Name: Eagle #777S
Location: 960' FSL, 1825' FEL Section 11, T-32-N, R-9-W
Latitude 36° 59.6542'N, Longitude 107° 44.7428'W
San Juan County, NM
Formation: Basin Fruitland Coal
Elevation: 6891'GL

Formation:	Top	Bottom	Contents
Surface	San Jose	2203'	
Ojo Alamo	2203'	2303'	aquifer
Kirtland	2303'	3139'	
Fruitland	3139'	3433'	
Intermediate TD	3383'		
Fruitland Coal	3433'	3743'	gas
B/Basal Coal	3743'	3786'	gas
Pictured Cliffs	3786'		
Total Depth	3828'		

Mudlog: with Softrock from 7" to TD
Coring Program: none

Mud Program:

Interval	Type	Weight	Vis.	Fluid Loss
0-120'	Spud	8.4-9.0	40-50	no control
120-3383'	Non-dispersed	8.4-9.0	30-60	no control
3383-3828'	Air/Mist			

Casing Program (as listed, the equivalent, or better):

Hole Size	Depth Interval	Csg.Size	Wt.	Grade
12 1/4"	0' - 120'	9 5/8"	32.3#	H-40
8 3/4"	0' - 3383'	7"	20.0#	J-55
6 1/4"	3343' - 3828'	5 1/2"	15.5#	J-55

Alternate Casing Program (as listed, the equivalent, or better):

Hole Size	Depth Interval	Csg.Size	Wt.	Grade
12 1/4"	0' - 120'	9 5/8"	32.3#	H-40
8 3/4"	0' - 3383'	7"	20.0#	J-55
6 1/4"	3383' - 3828'	open hole		

Tubing Program:

0' - 3828'	2 3/8"	4.7#	J-55
------------	--------	------	------

Float Equipment: 9 5/8" surface casing - saw tooth guide shoe. Centralizers will be run in accordance with Onshore Order #2.

7" intermediate casing - guide shoe and self-fill float collar. Standard centralizers run every other joint above shoe. Two turbolizing type centralizers - one below and one into the base of the Ojo Alamo @ 2303'. Standard centralizers thereafter every fourth joint up to the base of the surface pipe.

Wellhead Equipment: 9 5/8" x 7" x 2 3/8" x 11" 2000 psi xmas tree assembly.

Cementing:

9 5/8" surface casing - cement with 32 sx Class A, B Portland Type I, II cement (38 cu.ft. of slurry, bring cement to surface through 3/4" line) or equivalent. WOC 24 hours for pre-set holes or 8 hours for conventionally set holes before pressure testing or drilling out from under surface casing.

7" intermediate casing - lead w/299 sacks Premium Lite with 3% calcium chloride, 5 pps LCM-1, and 1/4#/sack flocele, 0.4% FL-52, & 0.4% SMS. Tail with 90 sacks Type III cmt with 1% calcium chloride, 1/4#/sack flocele and 0.2% FL-52 (762 cu.ft., 100% excess to circulate to surface).

5 1/2" liner - will not be cemented if run.

Note: If open hole logs are run, cement volumes will be based on 25% excess over caliper volumes.

BOP and tests:

Surface to intermediate TD - 11" 2000 psi (minimum) double gate BOP stack (Reference Figure #1). Prior to drilling out surface casing, test rams to 600#/30 min.

Intermediate TD to Total Depth - 7 1/6" 2000 psi (minimum) double gate BOP stack (Reference Figure #2). Prior to drilling out intermediate casing, test blind rams and casing to 1500 psi for 30 minutes; all pipe rams and casing to 1500 psi for 30 minutes each.

From surface to TD - choke manifold (Reference Figure #3).

Pipe rams will be actuated at least once each day and blind rams actuated once each trip to test proper functioning. An upper kelly cock valve with handle and drill string safety valves to fit each drill string will be maintained and available on the rig floor.

Additional information:

- * The Fruitland Coal formation will be completed.
- * Anticipated pore pressure for the Fruitland is less than 500 psi.
- * This gas is dedicated.
- * Lots 5-16 of section 11 is dedicated to the Fruitland Coal.

Date: July 17, 2003

Drilling Engineer: James M. McCarthy