

Distribution: O+4 (BLM); 1-Accounting; 1-Land; 1-File

Form 3160-5
(June 1990)

UNITED STATES
DEPARTMENT OF THE INTERIOR
BUREAU OF LAND MANAGEMENT

FORM APPROVED
Budget Bureau No. 1004-0135
Expires: March 31, 1993

SUNDRY NOTICES AND REPORTS ON WELLS

Do not use this form for proposals to drill or to deepen or reentry to a different reservoir.
Use "APPLICATION FOR PERMIT--" for such proposals

SUBMIT IN TRIPLICATE

1. Type of Well
☐ Oil Well ☒ Gas Well ☐ Other

2. Name of Operator

Merrion Oil & Gas Corporation (14634)

3. Address and Telephone No.

610 Reilly Avenue, Farmington, NM 87401-2634 (505) 327-9801

4. Location of Well (Footage, Sec., T., R., M., or Survey Description)

990' fsl & 1190' fwl (sw sw)

Section 25, T30N, R13W

5. Lease Designation and Serial No.

SF-078213

6. If Indian, Allottee or Tribe Name

7. If Unit or CA, Agreement Designation

8. Well Name and No.

Piedra Vista No. 1

9. API Well No.

30-045-09141

10. Field and Pool, or Exploratory Area

Basin Dakota

11. County or Parish, State

**San Juan County,
New Mexico**

12. CHECK APPROPRIATE BOX (s) TO INDICATE NATURE OF NOTICE, REPORT, OR OTHER DATA

TYPE OF SUBMISSION

☒ Notice of Intent

☐ Subsequent Report

☐ Final Abandonment Notice

TYPE OF ACTION

☐ Abandonment (Temporary)

☐ Recompletion

☐ Plugging Back

☐ Casing Repair

☐ Altering Casing

☒ Other **Plug & Abandon**

☐ Change of Plans

☐ New Construction

☐ Non-Routine Fracturing

☐ Water Shut-Off

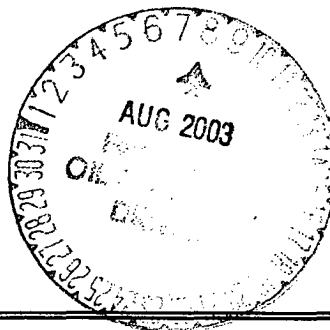
☐ Conversion to Injection

☐ Dispose Water

(Note: Report results of multiple completion on Completion or Recompletion Report and Log form.)

13. Describe Proposed or completed Operations (Clearly state all pertinent details, and give pertinent dates, including estimated date of starting any proposed work. If well is directionally drilled, give subsurface locations and measured and true vertical depths for all markers and zones pertinent to this work.)*

Merrion Oil & Gas proposes plug and abandon the subject well according to the attached procedure.



RECEIVED
203 AUG -4 PM 1:17
070 Farmington, NM

14. I hereby certify that the foregoing is true and correct

Signed

Connie S. Dinning

Title **Production Engineer**

Date **7/31/03**

(This space for Federal or State office use)

Approved By **Original Signed: Stephen Mason**

Title

Date

AUG 06 2003

Conditions of approval, if any:

Title 18 U.S.C. Section 1001, makes it a crime for any person knowingly and willfully to make to any department or agency of the United States any false, fictitious or fraudulent statements or representations as to any matter within its jurisdiction.

NMOCD

PLUG AND ABANDONMENT PROCEDURE

July 22, 2003

Piedra Vista #1

Basin Dakota

990' FSL & 1190' FWL Section 25, T30N, R13W
San Juan County, New Mexico, API #30-045-09141

Lat: N _____ / Long: W _____

Note: All cement volumes use 100% excess outside pipe and 50' excess inside. The stabilizing wellbore fluid will be 8.3 ppg, sufficient to balance all exposed formation pressures. All cement is ASTM Type II, mixed at 15.6ppg with a yield of 1.18 cf/sx.

- 070 Farington, NM
2003 AUG -4 PM 1:15
RECEIVED
1. Install and test location rig anchors. Prepare blow pit. Comply with all NMOCD, BLM, and Merriam safety regulations. MOL and RU daylight pulling unit. Conduct safety meeting for all personnel on location. NU relief line and blow down well; kill with water as necessary. ND wellhead and NU BOP. Test BOP.
 2. Release packer. TOH, tally and inspect 197 jts 2-3/8" tubing, total 6274', LD packer. Visually inspect tubing, if necessary LD tubing and PU workstring.
 3. **Plug #1 (Dakota perforations and top, 6152' – 6102')**: TIH and set 4-1/2" cement retainer at 6152'. Pressure test tubing to 1000#. Note: Casing Inspection Log has indicated numerous holes in casing from 4412' to 1935'. Mix 12 sxs cement and spot a balanced plug inside casing above the retainer to isolate Dakota perforations and top. PUH with tubing to 5350'.
 4. **Plug #2 (Gallup top, 5350' – 5250')**: Mix 12 sxs cement and spot balanced plug inside casing to cover the Gallup top. TOH with tubing.
 5. **Plug #3 (Mesaverde top, 3279' – 3179')**: Perforate 3 HSC squeeze holes at 3279'. Set a 4-1/2" CR at 3229'. Mix and pump 51 sxs cement, squeeze 39 sxs outside casing and leave 12 sxs inside casing to cover the Mesaverde top. TOH with tubing.
 6. **Plug #4 (Pictured Cliffs and Fruitland tops, ¹⁷²⁷1693' – ¹³⁵⁷1271')**: Perforate 3 HSC squeeze holes at ¹⁷²⁷1693'. Set a 4-1/2" CR at 1643'. Mix and pump 199 sxs cement, squeeze 163 sxs outside casing and leave 36 sxs inside casing to cover through the Fruitland top. Circulate hole clean and attempt to pressure test casing to 500#. If casing does not test, then spot or tag subsequent plugs as appropriate. TOH with tubing.
 6. **Plug #5 (Kirtland and Ojo Alamo tops, 963' – 823')**: Perforate 3 HSC squeeze holes at 963'. If casing tests, then establish rate into squeeze holes. Set 4-1/2" CR at 913'. Establish rate into squeeze holes. Mix and pump 51 sxs cement, squeeze 39 sxs outside casing and leave 12 sxs inside casing to cover through the Ojo Alamo top. TOH and LD tubing.
 7. **Plug #6 (^{Ojo Alamo}8-5/8" Surface casing, ^{308'}280' - ^{308'}Surface)**: Perforate 3 HSC squeeze holes at 280'. Establish circulation out bradenhead valve with water. Mix and pump approximately 100 sxs cement down 4-1/2" casing to circulate good cement out bradenhead valve. Shut well in and WOC.
 8. ND BOP and cut off casing below surface. Install P&A marker with cement to comply with regulations. RD, move off location, cut off anchors and restore location.

Piedra Vista #1

Current

Basin Dakota

990' FSL, 1190' FWL Section 25, T-30-N, R-13-W, San Juan County, NM

API #30-045-09141 - Lat: N _____ / Long: W _____

Today's Date: 7/21/03

Spud: 11/7/60

Completed: 12/22/60

Elevation: 5660' GL
5670' KB

12-1/2" hole

Ojo Alamo @ 873' (est)

Kirtland @ 913' (est)

Fruitland @ 1321' (est)

Pictured Cliffs @ 1643'

Mesaverde @ 3229'

Baker Model "G" packer at 4618'
w/14K compression

Gallup @ 5350'

Dakota @ 6205'

7-7/8" Hole

TD 6450'

TD 6500'

8-5/8" 24#, CF&I Casing set @ 230'
Cement with 175 sxs, circ to surface.

Well History

Jan '66: Change out tubing; land tubing with packer at 10K tension.

Jun '79: Packer stuck, work free, TOH with tbg and packer, heavy scale, holes, land tubing with packer at 12K tension.

Sep '85: Work packer free dragging out of hole all the way, holes in tubing 4072', 3437', 3342'

Feb '91: Had to work packer free, dragging out of hole, tubing had hole in 149th joint, RIH with tubing; hard time setting packer.

Feb '99: RIH with slickline, tight spot at 6064', ran 2" JDS with 3 slip stop to 6240', set pushed latch down spring and piston to bottom, cycled piston came up okay.

May '99: Ran 2" JDC to 6080', unable to latch to anything, blew well, brought up brush piston covered with sand, pad piston covered with sand and scale.

Dec '01: TIH with bailer to 5455', bailer returned with formation fines, pieces of rubber and full of drlg mud and cedar fiber. Pushed plunger to 6240', ran IB, looks like sand but no plunger neck. Mar '02: Work Pkr free, TOH and LD tubing w/packer, found holes in tubing. Tag fill at 6317', started pulling wet tbg, swab water/mud out of tubing, plunger stuck in scale/mud. PT casing from 6124' to 4730', OK. Isolate holes from 4412' to 1935', inspection log determined casing heavily pitted with multiple holes from 4397' to 1977', ran 197 jts 2-3/8" tbg, with pkr at 4618' in 14k compression.

Apr '02: Swab well, FL at 6300'. Fluid swabbed is dark and heavy with some very fine particles on and in water.

2-3/8" Tubing set at 6274'
(197 jts, 4.73#, EUE J55)

TOC @ 5198' (Calc, 75%)

Dakota Perforations:
6202' - 6332'

4-1/2" 11.6#, J-55 Casing set @ 6498'
Cement with 280 sxs (394 cf)

Piedra Vista #1

Proposed P&A

Basin Dakota

990' FSL, 1190' FWL Section 25, T-30-N, R-13-W, San Juan County, NM

API #30-045-09141 - Lat: N _____ / Long: W _____

Today's Date: 7/22/03

Spud: 11/7/60

Completed: 12/22/60

Elevation: 5660' GL
5670' KB

12-1/2" hole

Ojo Alamo @ 873' (est)

Kirtland @ 913' (est)

Fruitland @ 1321' (est)

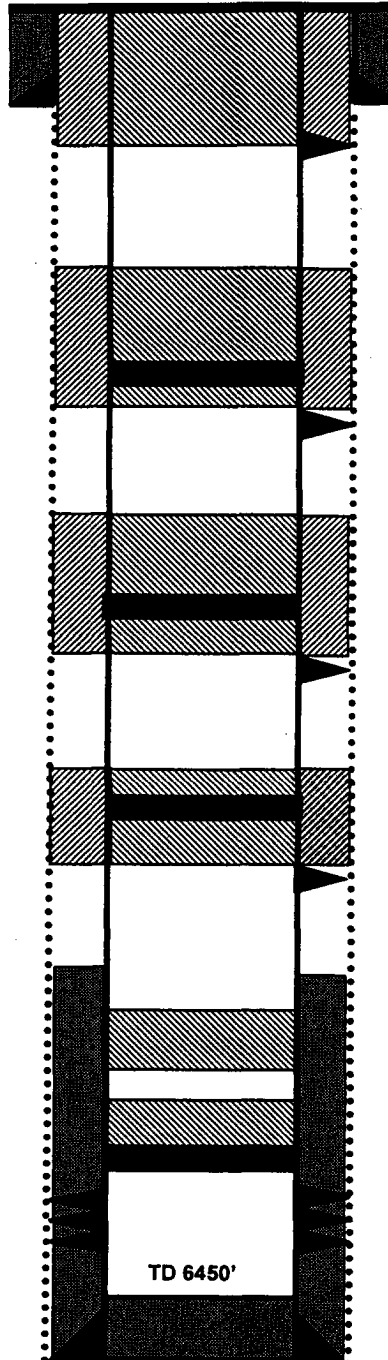
Pictured Cliffs @ 1643'

Mesaverde @ 3229'

Gallup @ 5350'

Dakota @ 6205'

7-7/8" Hole



TD 6500'