

RCVD DEC 15 06
OIL CONS. DIV.
DIST. 3

UNITED STATES
DEPARTMENT OF THE INTERIOR
BUREAU OF LAND MANAGEMENT

APPLICATION FOR PERMIT TO DRILL, DEEPEN, OR PLUG BACK

1a.	Type of Work DRILL	2006 NOV 20 PM 5:13 RECEIVED 670 FARMINGTON NM	5. Lease Number SF-080854
1b.	Type of Well GAS		6. If Indian, All. or Tribe
2.	Operator ConocoPhillips		7. Unit Agreement Name San Juan 32-8 Unit
3.	Address & Phone No. of Operator PO Box 4289, Farmington, NM 87499 (505) 326-9700		8. Farm or Lease Name 9. Well Number #29A
4.	Location of Well Surf Unit P (SESE), 661' FSL & 1097' FEL, Bott Latitude 36° 54' 22.14000" N Longitude 107° 38' 24.35000"W		10. Field, Pool, Wildcat Blanco Mesa Verde 11. Sec., Twn, Rge, Mer. (NMPM) p Sec. 11 T31N, R08W, NMPM API # 30-045-34075
14.	Distance in Miles from Nearest Town 35 miles to Bloomfield	12. County San Juan	13. State NM
15.	Distance from Proposed Location to Nearest Property or Lease Line 661'		
16.	Acres in Lease	17. Acres Assigned to Well 320 acres E/2	
18.	Distance from Proposed Location to Nearest Well, Drlg, Compl, or Applied for on this Lease		
19.	Proposed Depth 6226'	20. Rotary or Cable Tools Rotary	
21.	Elevations (DF, FT, GR, Etc.) 6660' GL	22. Approx. Date Work will Start	
23.	Proposed Casing and Cementing Program See Operations Plan attached		
24.	Authorized by: <u>Nancy N. Monahan</u> Regulatory Technician	<u>11/20/06</u> Date	

PERMIT NO. _____ APPROVAL DATE _____
APPROVED BY D. Mankeev TITLE AFM DATE 12/12/06

Archaeological Report submitted separately
Environmental Assessment is attached.

NOTE: This format is issued in lieu of U.S. BLM Form 3160-3

Title 18 U.S.C. Section 1001, makes it a crime for any person knowingly and willfully to make to any department or agency of the United States any false, fictitious or fraudulent statements or presentations as to any matter within its jurisdiction.

This is not an HPA well

This action is subject to technical and procedural review pursuant to 43 CFR 3165.3 and appeal pursuant to 43 CFR 3165.4

NMOCD

DRILLING OPERATIONS AUTHORIZED ARE
SUBJECT TO COMPLIANCE WITH ATTACHED
"GENERAL REQUIREMENTS".

REC'D DEC 15 2006
OIL CON. DIV.
DIST. 3

District I
1625 N. French Dr., Hobbs, NM 88240
District II
1301 W. Grand Avenue, Artesia, NM 88210
District III
1060 Rio Brazos Rd., Aztec, NM 87410
District IV
1220 S. St. Francis Dr., Santa Fe, NM 87505

State of New Mexico
Energy, Minerals & Natural Resources Department
OIL CONSERVATION DIVISION
1220 South St. Francis Dr.
Santa Fe, NM 87505

Fee Lease - 3 Copies
State Lease - 7 Copies
Submit to Appropriate District Office
Revised June 10, 2003
Form C-102

2006 NOV 20 PM 5:18
☐ AMENDED REPORT 8

RECEIVED
070 FARMINGTON NM

WELL LOCATION AND ACREAGE DEDICATION PLAT

¹ API Number 30-045-34075		² Pool Code 72319	³ Pool Name MESAVERDE
⁴ Property Code 31330	⁵ Property Name SAN JUAN 32-8		⁶ Well Number 29A
⁷ GRID No. 217817	⁸ Operator Name CONOCOPHILLIPS COMPANY		⁹ Elevation 6,680.2'

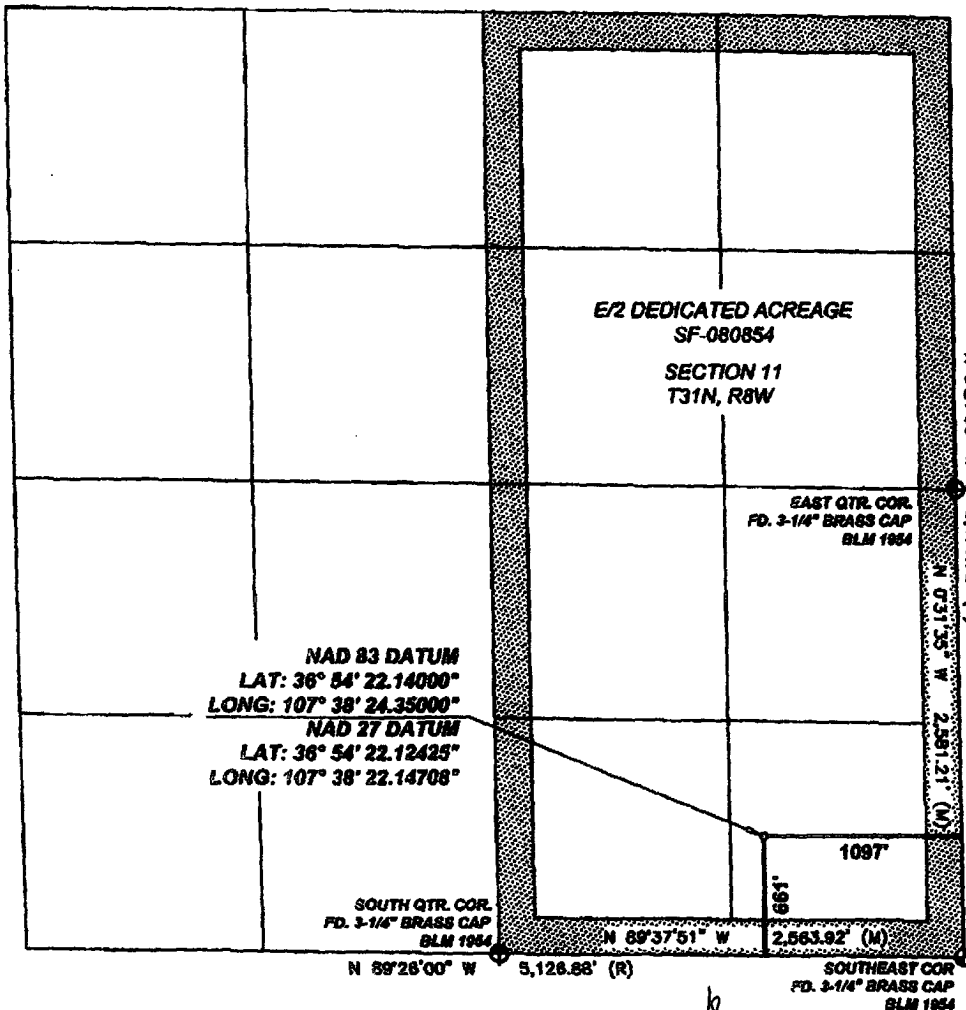
10 SURFACE LOCATION									
UL or lot no.	Section	Township	Range	Lot Idn	Feet from the	North/South line	Feet from the	East/West line	County
P	11	31-N	8-W		661	SOUTH	1097	EAST	SAN JUAN

11 Bottom Hole Location If Different From Surface									
UL or lot no.	Section	Township	Range	Lot Idn	Feet from the	North/South line	Feet from the	East/West line	County
P									

¹² Dedicated Acres 320 E/2	¹³ Joint or Infill	¹⁴ Consolidation Code	¹⁵ Order No.
--	-------------------------------	----------------------------------	-------------------------

NO ALLOWABLE WILL BE ASSIGNED TO THIS COMPLETION UNTIL ALL INTERESTS HAVE BEEN CONSOLIDATED OR A NON-STANDARD UNIT HAS BEEN APPROVED BY THE DIVISION

16



17 OPERATOR CERTIFICATION	
I hereby certify that the information contained herein is true and complete to the best of my knowledge and belief, and that this organization either owns a working interest or leased mineral interest in the land including the proposed bottom hole location or has a right to drill this well at this location pursuant to a contract with an owner of such a mineral or working interest, or to a voluntary pooling agreement or a compulsory pooling order heretofore entered by the division.	
Kandis Roland	
Signature	
Kandis Roland	
Printed Name	
Regulatory Assistant	
Title and E-mail Address	
7/27/06	
Date	
18 SURVEYOR CERTIFICATION	
I hereby certify that the well location shown on this plat was plotted from field notes of actual surveys made by me or under my supervision, and that the same is true and correct to the best of my belief.	
Date of Survey: 6/27/06	
Signature and Seal of Professional Surveyor:	
Certificate Number: NM 11393	

Office

Energy, Minerals and Natural Resources

May 27, 2004

District I

1625 N. French Dr., Hobbs, NM 88240

District II

1301 W. Grand Ave., Artesia, NM 88210

District III

1000 Rio Brazos Rd., Aztec, NM 87410

District IV

1220 S. St. Francis Dr., Santa Fe, NM 87505

OIL CONSERVATION DIVISION

1220 South St. Francis Dr.

Santa Fe, NM 87505

WELL API NO.

30-045-

34675

5. Indicate Type of Lease

STATE ☐FEE ☐

6. State Oil & Gas Lease No.

Federal Lease - SF-080854

7. Lease Name or Unit Agreement Name

San Juan 32-8 Unit

8. Well Number

#29A

9. OGRID Number

217817

10. Pool name or Wildcat

Blanco Mesa Verde

SUNDRY NOTICES AND REPORTS ON WELLS
(DO NOT USE THIS FORM FOR PROPOSALS TO DRILL OR TO DEEPEN OR PLUG BACK TO A DIFFERENT RESERVOIR. USE "APPLICATION FOR PERMIT" (FORM C-101) FOR SUCH PROPOSALS.)

1. Type of Well:

Oil Well ☐Gas Well ☒

Other

2. Name of Operator

ConocoPhillips Company

3. Address of Operator

3401 E. 30TH STREET, FARMINGTON, NM 87402

4. Well Location

Unit Letter P : 661 feet from the South line and 1097 feet from the East line
Section 11 Township 31N Rng 8W NMPM County San Juan

11. Elevation (Show whether DR, RKB, RT, GR, etc.)

6660' GL

Pit or Below-grade Tank Application

☐ or Closure ☐

Pit type

New Drill

Depth to Groundwater

>100'

Distance from nearest fresh water well

>1000'

Distance from nearest surface water

>1000'

Pit Liner Thickness:

12

mil

Below-Grade Tank:

Volume

bbls;

Construction Material

12. Check Appropriate Box to Indicate Nature of Notice, Report or Other Data

NOTICE OF INTENTION TO:

PERFORM REMEDIAL WORK ☐TEMPORARILY ABANDON ☐PULL OR ALTER CASING ☐PLUG AND ABANDON ☐CHANGE PLANS ☐MULTIPLE COMPL ☐

OTHER:

New Drill ☒

SUBSEQUENT REPORT OF:

REMEDIAL WORK ☐COMMENCE DRILLING OPNS. ☐CASING/CEMENT JOB ☐ALTERING CASING ☐P AND A ☐OTHER: ☐

13. Describe proposed or completed operations. (Clearly state all pertinent details, and give pertinent dates, including estimated date of starting any proposed work). SEE RULE 1103. For Multiple Completions: Attach wellbore diagram of proposed completion or recompletion.

New Drill, Lined:

ConocoPhillips proposes to construct a new drilling pit, an associated vent/flare pit and a pre-set mud pit (if required). Based on ConocoPhillips' interpretation of the Ecosphere's risk ranking criteria, the new drilling pit and pre-set mud pit will be lined pits as detailed in ConocoPhillips' General Plan dated June 2005 on file at the NMOCD office. A portion of the vent/flare pit will be designed to manage fluids and that portion will be lined as per the risk ranking criteria. ConocoPhillips anticipates closing these pits according to the November 1, 2004 Guidelines.

I hereby certify that the information above is true and complete to the best of my knowledge and belief. I further certify that any pit or below-grade tank has been/will be constructed or closed according to NMOCD guidelines ☐, a general permit ☒ or an (attached) alternative OCD-approved plan ☐.

SIGNATURE

TITLE

Regulatory Assistant

DATE

10/5/2006

Type or print name

Tracey N. Monroe

E-mail address:

tmonroe@br-inc.com

Telephone No.

505-326-9752

For State Use Only

APPROVED BY

TITLE

DEPUTY OIL & GAS INSPECTOR, DIST. #3

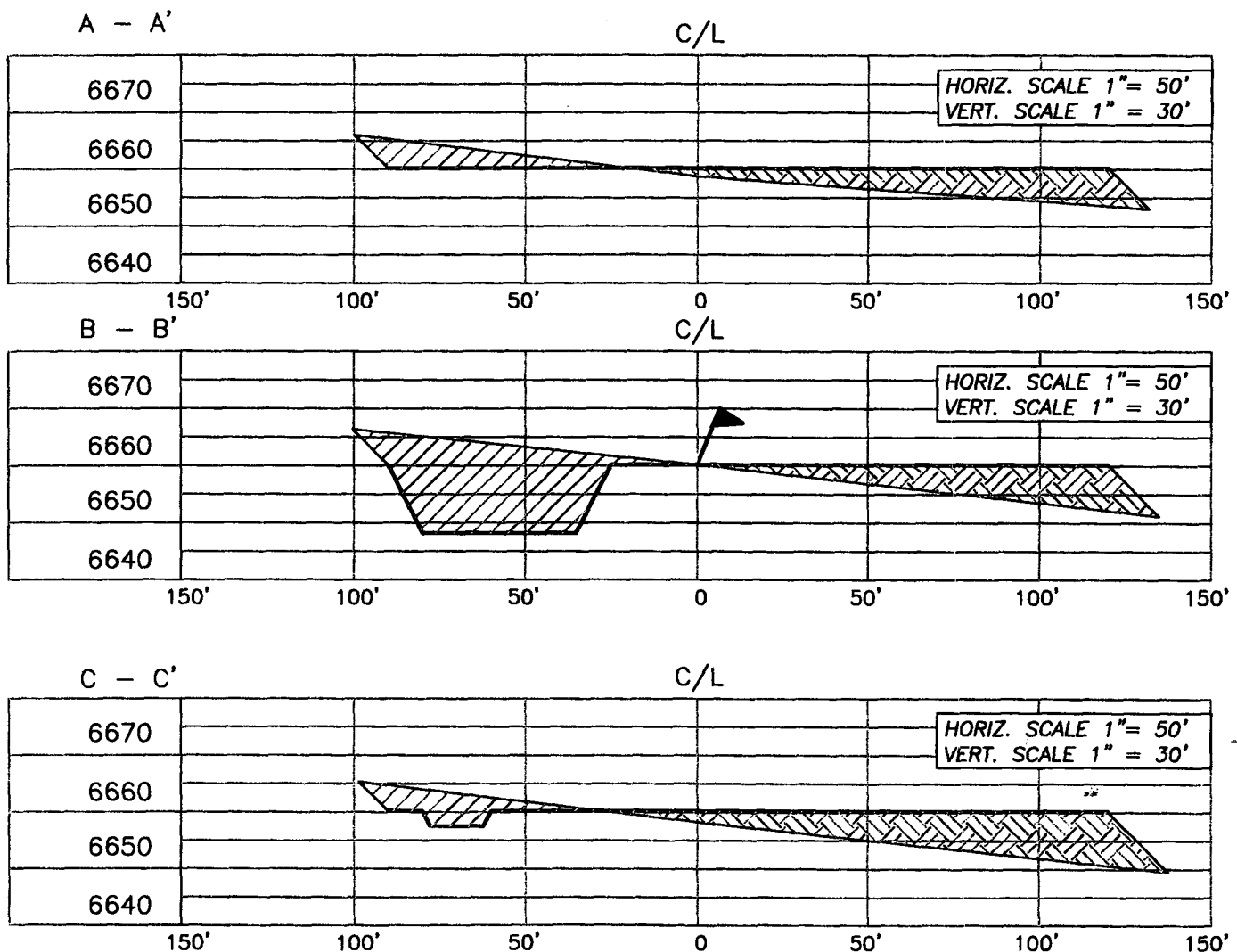
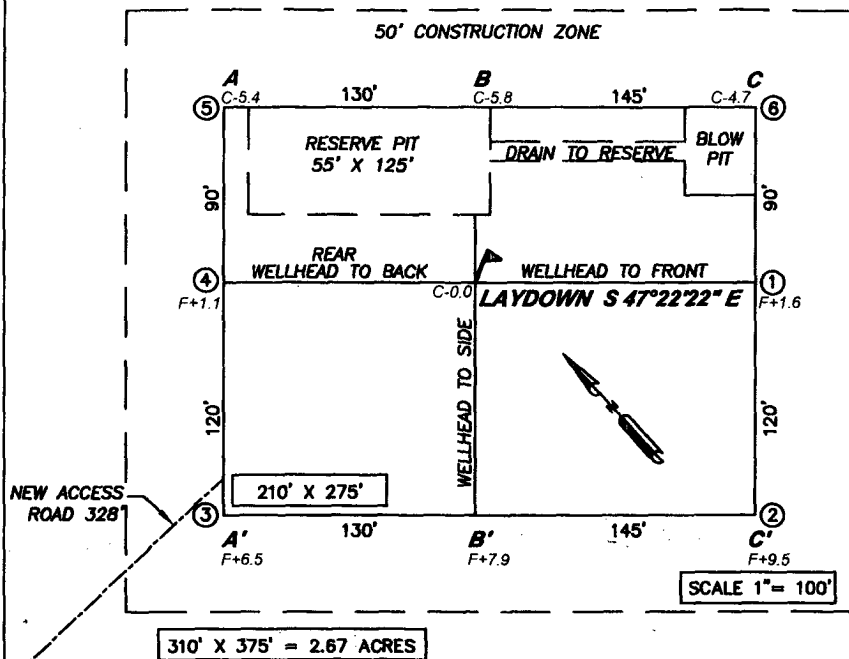
DATE

DEC 22 2006

Conditions of Approval (if any):

NAD 27 DATUM
LAT: 36° 54' 22.12425"
LONG: 107° 38' 22.14708"

**SAN JUAN 32-8 29A
661' FSL, 1097' FEL
SECTION 11, T31N, R8W,
SAN JUAN COUNTY, NEW MEXICO
ELEV.: 6,660.2' NADV88**



CONTRACTOR SHOULD CALL ONE-CALL FOR LOCATION OF ANY MARKED OR UNMARKED BURIED PIPELINES OR CABLES ON WELL PAD AND OR ACCESS ROAD PRIOR TO CONSTRUCTION

REVISIONS			
NO.	DESCRIPTION	REVISED BY	DATE

1300 W. BROADWAY
BLOOMFIELD, NM, 87413
PHONE: (505)632-7777

CHENAULT CONSULTING INC.

San Juan 32-8 Unit #29A APD Cement Calculations

HOLE: 12.25 "
CSG OD: 9.625 "
CSG ID: 9.001 "
WGT: 32.3 pcf
GRADE: H-40
EXCESS: 200 %
DEPTH: 280' 200'

SURFACE:
Option 1
99 sx
 20.7 bbls 6 hrs 250 psi
 116.3 cuft 8 hrs 500 psi
 1.17 ft³/sx
 15.8 ppg
 4.973 gal/sx
 Class G Cement
 + 3% S001 Calcium Chloride
 + 0.25 lb/sx D029 Cellophane Flakes

Option 2
96 sx
 20.7 bbls 6 hrs 250 psi
 116.3 cuft 8 hrs 500 psi
 1.21 ft³/sx
 15.6 ppg
 5.29 gal/sx
 Standard Cement
 + 3% Calcium Chloride
 + 0.25 lb/sx Floccle

Option 3
37 sx
 10.6 bbls 8 hrs 475 psi
 59.3 cuft 24 hrs 1375 psi
 1.61 ft³/sx
 14.5 ppg
 7.41 gal/sx
 Type III Ready Mix
 + 20% Fly Ash

INTERMEDIATE LEAD:
Option 1
254 sx
 122.9 bbls 9 hrs 300 psi
 689.8 cuft 48 hrs 525 psi
 2.72 ft³/sx
 11.7 ppg
 15.74 gal/sx
 Class G Cement
 + 3% D079 Extender
 + 0.20% D046 Antifoam
 + 10 lb/sx Phenoseal

Option 2
265 sx
 122.9 bbls 1.47 hrs 50 psi
 689.8 cuft 12 hrs 350 psi
 2.60 ft³/sx
 11.5 ppg
 14.62 gal/sx
 Type III Ashgrove Cement
 + 30 lb/sx San Juan Poz
 + 3% Bentonite
 + 5.0 lb/sx Phenoseal

Option 3
262 sx
 122.9 bbls 3 hrs 100 psi
 689.8 cuft 24 hrs 443 psi
 2.63 ft³/sx
 11.7 ppg
 15.92 gal/sx
 Class G Cement
 + 3% D079 Extender
 + 0.20% D046 Antifoam
 + 1.0 lb/bbl CemNet

TAIL: 771.2'
DEPTH: 3856'

INTERMEDIATE TAIL:

Option 1
140 sx
 32.7 bbls 3.53 500 psi
 183.5 cuft 8.22 1000 psi
 1.31 ft³/sx 24 hrs 3170 psi
 13.5 ppg 48 hrs 5399 psi
 5.317 gal/sx
 50/50 Poz: Class G Cement
 + 0.25 lb/sx D029 Cellophane Flakes
 + 3% S001 Calcium Chloride
 + 2% D020 Bentonite
 + 1.5 lb/sx D024 Gilsontite Extender
 + 0.1% D046 Antifoam
 + 6 lb/sx Phenoseal

Option 2
138 sx
 32.7 bbls 2.05 50 psi
 183.5 cuft 4.06 500 psi
 1.33 ft³/sx 12 hrs 1250 psi
 13.5 ppg 24hrs 1819 psi
 5.52 gal/sx
 50/50 Poz: Standard Cement
 + 2% Bentonite
 + 6.0 lb/sx Phenoseal

Option 3
143 sx
 32.7 bbls 24 hrs 1850 psi
 183.5 cuft 48 hrs 3411 psi
 1.28 ft³/sx
 13.5 ppg
 5.255 gal/sx
 50/50 Poz: Class G Cement
 + 2% D020 Bentonite
 + 5.0 lb/sx D024 Gilsontite Extender
 + 2% S001 Calcium Chloride
 + 0.1% D046 Antifoam
 + 0.15% D065 Dispersant
 + 1.0 lb/bbl CemNet

HOLE: 6.25 "
CSG OD: 4.5 "
CSG ID: 4.052 "
WGT: 10.5 pcf
GRADE: J-55
EXCESS: 30 %
DEPTH: 6226'

PRODUCTION:
Option 1
236 sx
 60.5 bbls 7 hrs 500 psi
 339.6 cuft 24 hrs 2100 psi
 1.44 ft³/sx
 13.0 ppg
 6.47 gal/sx
 50/50 Poz: Class G Cement
 + 0.25 lb/sx D029 Cellophane Flakes
 + 3% D020 Bentonite
 + 1.0 lb/sx D024 Gilsontite Extender
 + 0.25% D167 Fluid Loss
 + 0.25% D065 Dispersant
 + 0.1% D800 Retarder
 + 0.1% D046 Antifoam
 + 3.5 lb/sx Phenoseal

Option 2
234 sx
 60.5 bbls 9.32 50 psi
 339.6 cuft 12 hrs 500 psi
 1.45 ft³/sx 13.29 1026 psi
 13.1 ppg 24 hrs 2300 psi
 6.55 gal/sx
 50/50 Poz: Standard Cement
 + 3% Bentonite
 + 0.2% CFR-3 Friction Reducer
 + 0.1% HR-5 Retarder
 + 0.8% Hialad-9 Fluid Loss Additive
 + 3.5 lb/sx Phenoseal

M3-11/15/04

San Juan 32-8 Unit #29A

HOLE: 12.25"
CSG OD: 9.625"
CSG ID: 9.001"
WGT: 32.3 upf
GRADE: H-40
EXCESS: 200 %

SURFACE:

DEPTH: 200

INTERMEDIATE LEAD:

Option 4

240 sx
122.9 bbls
689.8 cuft
2.88 ft³/sx
11.5 ppq
16.85 gal/sx
Standard Cement
+ 3% Econolite (Extender)
+ 10 lb/sx Phenoseal

Comp. Strength
1.47 50 psi
12 hrs 350 psi
24 hrs 450 psi

Option 5

328 sx
122.9 bbls
689.8 cuft
2.10 ft³/sx
11.7 ppq
11.724 gal/sx
75% Type XI / 25% Class G Cement
+ 0.25 lb/sx D029 Cellulophane Flakes
+ 3% D079 Extender
+ 0.20% D046 Antifoam

Comp. Strength
10.56 500 psi
42 hrs 1012 psi

HOLE: 8.75"
CSG OD: 7"
CSG ID: 6.456"
WGT: 20 pcf
GRADE: J-55
EXCESS: 50 %

TAIL: 771.2'

DEPTH: 3856'

INTERMEDIATE TAIL:

HOLE: 6.25"
CSG OD: 4.5"
CSG ID: 4.052"
WGT: 10.5 pcf
GRADE: J-55
EXCESS: 30 %

PRODUCTION:

DEPTH: 6226'

C., HARRADEN/ November 21, 2006

CONOCOPHILLIPS/ San Juan 32-8 Unit #29A APD

STIPULATION/CONDITION OF APPROVAL

This well is located within a 'vulnerable area'. In order to protect the integrity of the fresh water alluvium aquifer, a minimum surface csg. depth of 200' is stipulated as a condition of approval for this APD.

M³ - 11/15/06

PROJECT PROPOSAL - New Drill / Sidetrack

SAN JUAN 32-8 29A

Lease:		AFE #: WAN.CNV.7123		AFE \$:	
Field Name: 32-8		Rig: UNSCHEDULED 32-8		State: NM County: SAN JUAN	
Geoscientist: Brain, Ted H.		Phone: 832-486-2592		Prod. Engineer: Piotrowicz, Greg M. Phone: +1 832-486-3486	
Res. Engineer:		Phone: 832 486-2651		Proj. Field Lead: Franssen, Eric E. Phone:	

Primary Objective (Zones):

Zone	Zone Name
R20002	MESAVERDE(R20002)

Location: Surface		Datum Code: NAD 27		Straight Hole	
Latitude: 36.906100	Longitude: -107.639500	X:	Y:	Section: 11	Range: 8W
Footage X: 1097 FEL	Footage Y: 661 FSL	Elevation: 6660	(FT)	Township: 31N	
Tolerance:					

Location Type: Summer Only	Start Date (Est.):	Completion Date:	Date In Operation:
Formation Data: Assume KB = 6676 Units = FT			

Formation Call & Casing Points	Depth (TVD in Ft)	SS (Ft)	Depletion (Yes/No)	BHP (PSIG)	BHT	Remarks
Surface Casing	216	6460	<input type="checkbox"/>			12-1/4 hole. 9 5/8" 32.3 ppf, H-40, STC casing. Circulate cement to surface.
NCMT	1016	5660	<input type="checkbox"/>			
OJAM	2316	4360	<input type="checkbox"/>			Possible water flows.
KRLD	2466	4210	<input type="checkbox"/>			
FRLD	3201	3475	<input type="checkbox"/>			Possible gas.
PCCF	3556	3120	<input type="checkbox"/>			
LEWS	3756	2920	<input type="checkbox"/>			
Intermediate Casing	3856	2820	<input type="checkbox"/>			8 3/4" Hole. 7", 20 ppf, J-55, STC Casing. Circulate cement to surface.
CHRA	4731	1945	<input type="checkbox"/>			
CLFH	5521	1155	<input type="checkbox"/>			Gas; possibly wet
MENF	5566	1110	<input type="checkbox"/>			Gas.
PTLK	5876	800	<input type="checkbox"/>			Gas.
TOTAL DEPTH MV	6226	450	<input type="checkbox"/>			6-1/4" Hole. 4-1/2", 10.5 ppf, J-55, STC casing. Circulate cement a minimum of 100' inside the previous casing string. No open hole logs. Cased hole TDT with GR to surface.
Total Depth	6226	450	<input type="checkbox"/>			

Reference Wells:

Reference Type	Well Name	Comments
----------------	-----------	----------

Logging Program:

Intermediate Logs: ☐ Log only if show ☐ GR/ILD ☐ Triple Combo

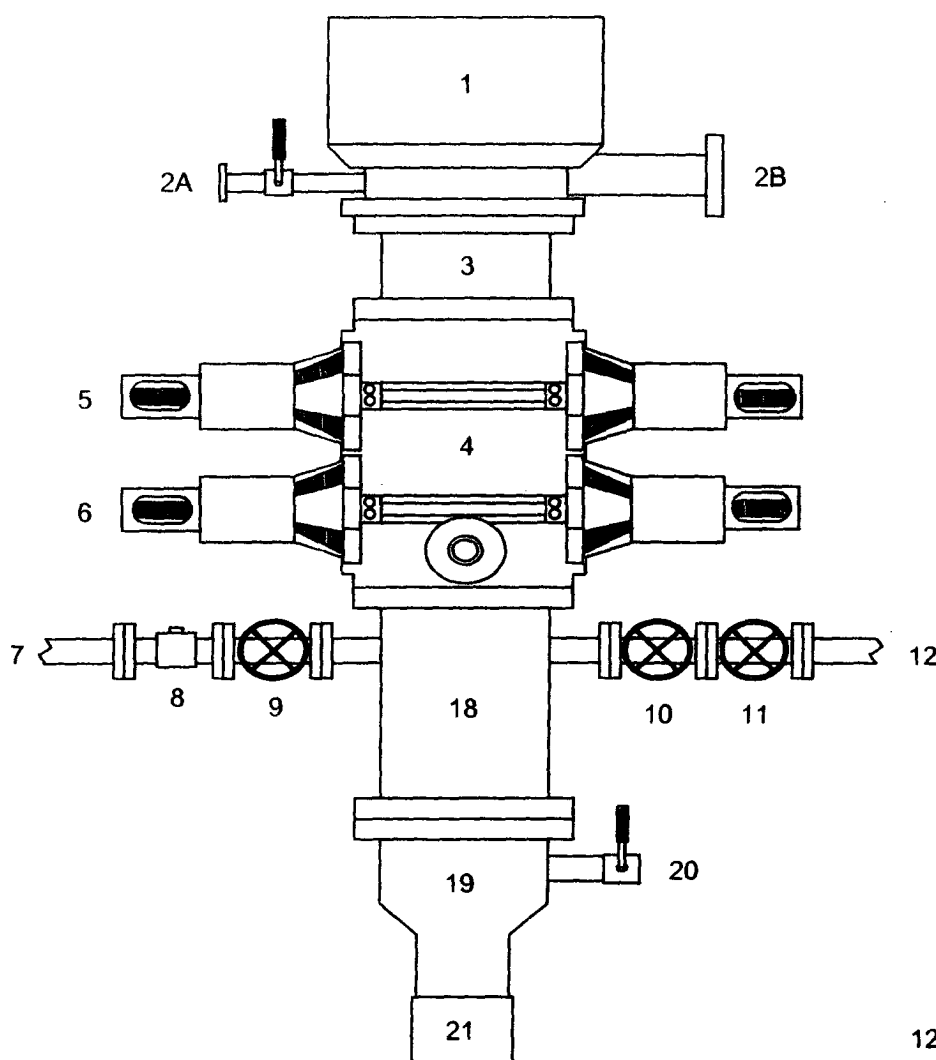
TD Logs: ☐ Triple Combo ☐ Dipmeter ☐ RFT ☐ Sonic ☐ VSP ☒ TDT

Additional Information:

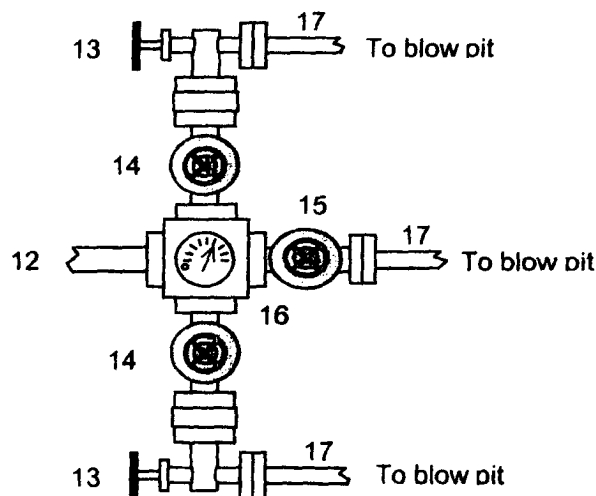
Log Type	Stage	From (Ft)	To (Ft)	Tool Type/Name	Remarks
----------	-------	-----------	---------	----------------	---------

BLOWOUT PREVENTER ARRANGEMENT & PROGRAM

For Drilling to Intermediate Casing Point & Setting 7" Intermediate Casing



1. Rotating Head
- 2A. Fill-up Line & valve
- 2B. Flowline
3. Spacer Spool
4. Double Ram BOP (11", 3000 psi)
5. Pipe Rams
6. Blind Rams
7. Kill Line
8. Kill Line Check Valve
9. Kill Line Valve
10. Inner Choke Line Valve (3")
11. Outer Choke Line Valve (3")
12. Choke Line (3")
13. Variable Choke
14. Choke Line Valve (2")
15. Panic Line Valve (3")
16. Choke Manifold Pressure Gauge
17. Choke Line (2")
18. Mud Cross Spacer Spool
19. Casing Head "A" Section
20. Casing Head "A" Section 2" Valve
21. 9 5/8" Casing Collar



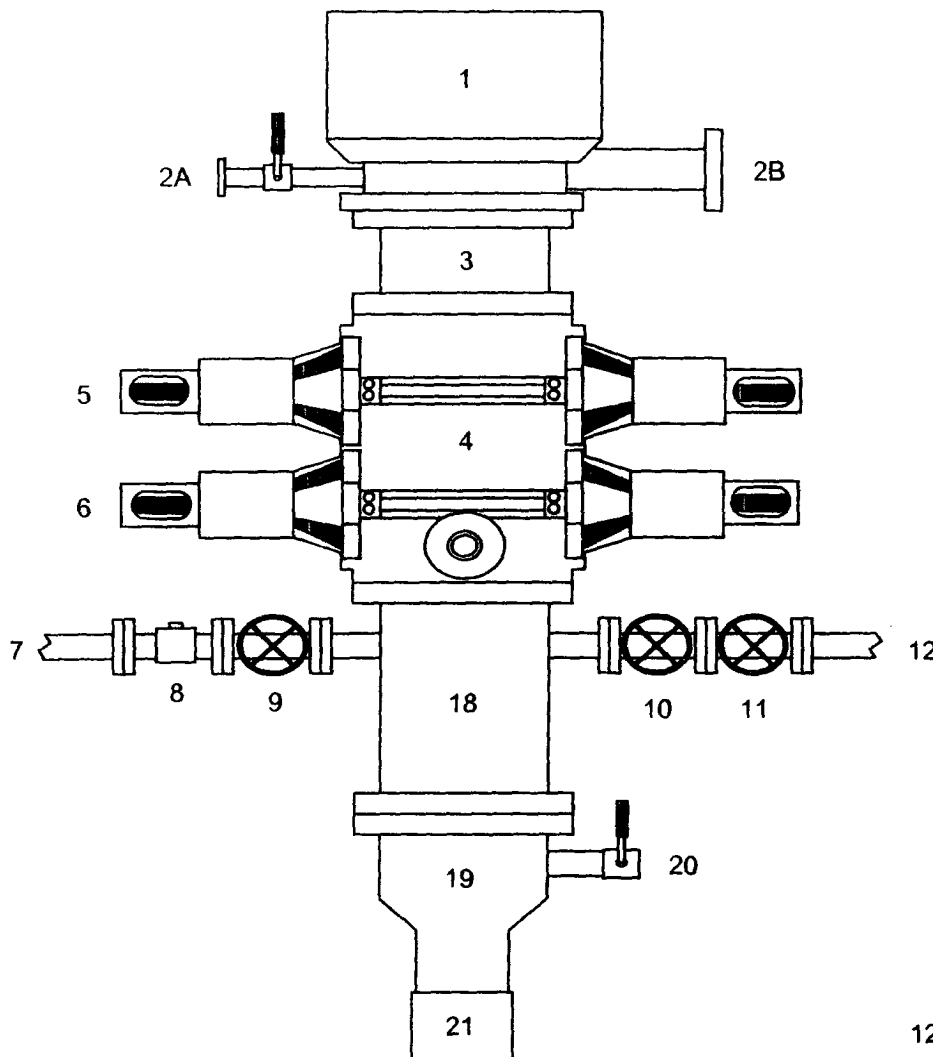
A 12-1/4" hole will be drilled to approximately 220' and the 9-5/8" surface casing will be run and cemented. The Casing Head "A" Section will be screwed onto the 9-5/8" surface casing stub. The BOP will be installed on the Casing Head "A" Section. A test plug will be set in the wellhead and the pipe rams and choke manifold will be tested to 200 psi to 300 psi (low pressure test) for 10 minutes and to 1000 psi (high pressure test) for 10 minutes. Then the test plug will be removed, and the **9-5/8" casing will be pressure tested** against closed blind rams to 200 psi to 300 psi for 10 minutes and to **1000 psi for 30 minutes** (this value is one 44% of the minimum internal yield pressure of the 9-5/8" casing). (Note: per regulatory requirements we will wait on cement at least 8 hrs after placement before testing the 9-5/8" surface casing). Then an 8-3/4" hole will be drilled to intermediate casing point and 7" intermediate casing will be run and cemented.

In addition to the equipment in the above diagram the following equipment will comprise the BOP system:

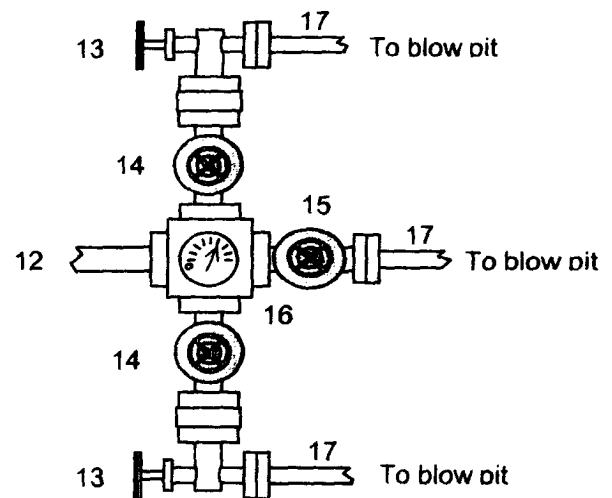
1. Upper Kelly cock Valve with handle
2. Stab-in TIW valve for all drillstrings in use

BLOWOUT PREVENTER ARRANGEMENT & PROGRAM

For Drilling to Intermediate Casing Point & Setting 7" Intermediate Casing



1. Rotating Head
- 2A. Fill-up Line & valve
- 2B. Flowline
3. Spacer Spool
4. Double Ram BOP (11", 3000 psi)
5. Pipe Rams
6. Blind Rams
7. Kill Line
8. Kill Line Check Valve
9. Kill Line Valve
10. Inner Choke Line Valve (3")
11. Outer Choke Line Valve (3")
12. Choke Line (3")
13. Variable Choke
14. Choke Line Valve (2")
15. Panic Line Valve (3")
16. Choke Manifold Pressure Gauge
17. Choke Line (2")
18. Mud Cross Spacer Spool
19. Casing Head "A" Section
20. Casing Head "A" Section 2" Valve
21. 9 5/8" Casing Collar



A 12-1/4" hole will be drilled to approximately 220' and the 9-5/8" surface casing will be run and cemented. The Casing Head "A" Section will be screwed onto the 9-5/8" surface casing stub. The BOP will be installed on the Casing Head "A" Section. A test plug will be set in the wellhead and the pipe rams and choke manifold will be tested to 200 psi to 300 psi (low pressure test) for 10 minutes and to 1000 psi (high pressure test) for 10 minutes. Then the test plug will be removed, and the **9-5/8" casing will be pressure tested** against closed blind rams to 200 psi to 300 psi for 10 minutes and to **1000 psi for 30 minutes** (this value is one 44% of the minimum internal yield pressure of the 9-5/8" casing). (Note: per regulatory requirements we will wait on cement at least 8 hrs after placement before testing the 9-5/8" surface casing). Then an 8-3/4" hole will be drilled to intermediate casing point and 7" intermediate casing will be run and cemented.

In addition to the equipment in the above diagram the following equipment will comprise the BOP system:

1. Upper Kelly cock Valve with handle
2. Stab-in TIW valve for all drillstrings in use