

Submit 3 Copies To Appropriate District  
Office  
District I  
1625 N. French Dr., Hobbs, NM 87240  
District II  
1301 W. Grand Ave., Artesia, NM 88210  
District III  
1000 Rio Brazos Rd., Aztec, NM 87410  
District IV  
1220 S. St. Francis Dr., Santa Fe, NM 87505

State of New Mexico  
Energy, Minerals and Natural Resources

OIL CONSERVATION DIVISION  
1220 South St. Francis Dr.  
Santa Fe, NM 87505

|  |
|--|
| WELL API NO.<br><b>30-045-34065</b>  |
| 5. Indicate Type of Lease<br>STATE <input type="checkbox"/> FEE <input type="checkbox"/> |
| 6. State Oil & Gas Lease No.   |
| 7. Lease Name or Unit Agreement Name:<br><b>DANBURG GAS COM B</b>                        |
| 8. Well Number<br><b>#1F</b>   |
| 9. OGRID Number<br><b>5380</b>   |
| 10. Pool name or Wildcat<br><b>BASIN DAKOTA</b>  |

**SUNDRY NOTICES AND REPORTS ON WELLS**  
(DO NOT USE THIS FORM FOR PROPOSALS TO DRILL OR TO DEEPEN OR PLUG BACK TO A DIFFERENT RESERVOIR. USE "APPLICATION FOR PERMIT" (FORM C-101) FOR SUCH PROPOSALS.)

|  |   |
|--|---|
| 1. Type of Well:<br>Oil Well <input type="checkbox"/> Gas Well <input type="checkbox"/> Other  | 7. Lease Name or Unit Agreement Name:<br><b>DANBURG GAS COM B</b> |
| 2. Name of Operator<br><b>XTO Energy Inc.</b>  | 8. Well Number<br><b>#1F</b>                                      |
| 3. Address of Operator<br><b>2700 Farmington Ave., Bldg. K. Ste 1 Farmington, NM 87401</b>   | 9. OGRID Number<br><b>5380</b>                                    |
| 4. Well Location<br>Unit Letter <b>H</b> : <b>1415</b> feet from the <b>NORTH</b> line and <b>240</b> feet from the <b>EAST</b> line<br>Section <b>21</b> Township <b>30N</b> Range <b>12W</b> NMPM County <b>SAN JUAN</b> | 10. Pool name or Wildcat<br><b>BASIN DAKOTA</b>                   |
| 11. Elevation (Show whether DR, RKB, RT, GR, etc.)<br><b>5628'</b>   |   |
| Pit or Below-grade Tank Application <input type="checkbox"/> or Closure <input type="checkbox"/>   |   |
| Pit type _____ Depth to Groundwater _____ Distance from nearest fresh water well _____ Distance from nearest surface water _____   |   |
| Pit Liner Thickness: _____ mil Below-Grade Tank: Volume _____ bbls; Construction Material _____  |   |

12. Check Appropriate Box to Indicate Nature of Notice, Report, or Other Data

**NOTICE OF INTENTION TO:**

PERFORM REMEDIAL WORK ☐ PLUG AND ABANDON ☐  
TEMPORARILY ABANDON ☐ CHANGE PLANS ☒  
PULL OR ALTER CASING ☐ MULTIPLE COMPLETION ☐  
OTHER: ☐

**SUBSEQUENT REPORT OF:**

REMEDIAL WORK ☐ ALTERING CASING ☐  
COMMENCE DRILLING OPNS. ☐ PLUG AND ABANDONMENT ☐  
CASING TEST AND CEMENT JOB ☐  
OTHER: ☐

13. Describe proposed or completed operations. (Clearly state all pertinent details, and give pertinent dates, including estimated date of starting any proposed work). SEE RULE 1103. For Multiple Completions: Attach wellbore diagram of proposed completion or recompletion.

XTO Energy Inc. proposes to change this well from a vertical to a horizontal well. The Bottom Hole Location will be 2000' FNL & 700' FEL. Please see the attached plat.

HOLD C104 FOR directional survey

I hereby certify that the information above is true and complete to the best of my knowledge and belief. I further certify that any pit or below-grade tank has been/will be constructed or closed according to NMOC guidelines ☐ , a general permit ☐ or an (attached) alternative OCD-approved plan ☐

SIGNATURE Lorri D. Bingham TITLE REGULATORY COMPLIANCE TECH DATE 12/14/06  
Type or print name LORRI D. BINGHAM E-mail address: lorri\_bingham@ctoenergy.com Telephone No. 505-324-1090

**For State Use Only**

APPROVED BY [Signature] TITLE DEPUTY OIL & GAS INSPECTOR, DIST. 3 DATE DEC 15 2006  
Conditions of Approval, if any:

→ see plat

8

District I  
1625 N. French Dr., Hobbs, NM 88240

District II  
811 South First, Artesia, NM 88210

District III  
1000 Rio Brazos Rd., Aztec, NM 87410

District IV  
1220 S. St. Francis Dr., Santa Fe, NM 87505

State of New Mexico  
Energy, Minerals & Natural Resources Department

OIL CONSERVATION DIVISION  
1220 South St. Francis Dr.  
Santa Fe, NM 87505

Form C-102  
Revised August 15, 2000

Submit to Appropriate District Office  
State Lease - 4 Copies  
Fee Lease - 3 Copies

WELL LOCATION AND ACREAGE DEDICATION PLAT

☐ AMENDED  
DEDICATED  
RECORD

|   |   |                                 |   |
|---|---|---------------------------------|---|
| <sup>1</sup> API Number<br>30-045-34065 |   | <sup>2</sup> Pool Code<br>71599 | <sup>3</sup> Pool Name<br>Basin Dakota (prorated gas) |
| <sup>4</sup> Property Code<br>22677     | <sup>5</sup> Property Name<br>DANBURG GAS COM B |                                 | <sup>6</sup> Well Number<br>1F                        |
| <sup>7</sup> OGRID No.<br>5380          | <sup>8</sup> Operator Name<br>XTO Energy, Inc.  |                                 | <sup>9</sup> Elevation<br>5628'                       |

<sup>10</sup> Surface Location

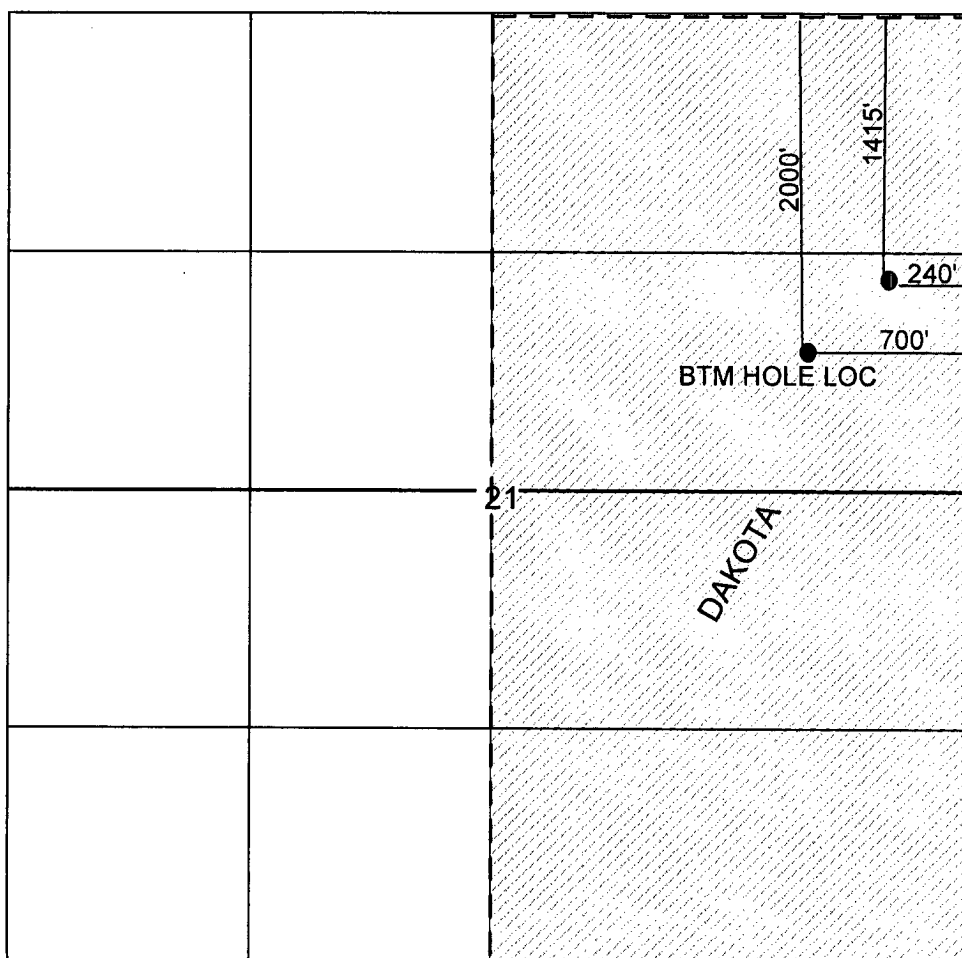
| UL or lot no. | Section | Township | Range | Lot Idn | Feet from the | North/South line | Feet from the | East/West line | County   |
|---------------|---------|----------|-------|---------|---------------|------------------|---------------|----------------|----------|
| H             | 21      | 30N      | 12W   |         | 1415          | NORTH            | 240           | EAST           | SAN JUAN |

<sup>11</sup> Bottom Hole Location If Different From Surface

| UL or lot no. | Section | Township | Range | Lot Idn | Feet from the | North/South line | Feet from the | East/West line | County   |
|---------------|---------|----------|-------|---------|---------------|------------------|---------------|----------------|----------|
| H             | 21      | 30N      | 12W   |         | 2000          | NORTH            | 700           | EAST           | SAN JUAN |

|                                      |                               |                                  |                         |
|--------------------------------------|-------------------------------|----------------------------------|-------------------------|
| <sup>12</sup> Dedicated Acres<br>320 | <sup>13</sup> Joint or Infill | <sup>14</sup> Consolidation Code | <sup>15</sup> Order No. |
|--------------------------------------|-------------------------------|----------------------------------|-------------------------|

NO ALLOWABLE WILL BE ASSIGNED TO THIS COMPLETION UNTIL ALL INTERESTS HAVE BEEN CONSOLIDATED OR A NON-STANDARD UNIT HAS BEEN APPROVED BY THE DIVISION



OPERATOR CERTIFICATION

I hereby certify that the information contained herein is true and complete to the best of my knowledge and belief

*Lorri D. Bingham*  
Signature

Lorri D. Bingham

Printed Name

Regulatory Compliance Tech

Title

12/6/2006

Date

SURVEYOR CERTIFICATION

I hereby certify that the well location shown on this plat was plotted from field notes of actual surveys made by me or under my supervision, and that the same is true and correct to the best of my belief.

10/20/2005

Date of Survey

Original Survey Signed By:

John A. Vukonich

Certificate Number

14831

requested revised form  
& (enclosed plat)