

DISTRICT I  
1625 N. French Dr., Hobbs, N.M. 88240

DISTRICT II  
1301 W. Grand Avenue, Artesia, N.M. 88210

DISTRICT III  
1000 Rio Brazos Rd., Aztec, N.M. 87410

DISTRICT IV  
2040 S. St. Francis Dr., Santa Fe, NM 87505

State of New Mexico  
Energy, Minerals & Natural Resources Department

Form C-102  
Revised October 12, 2005

OIL CONSERVATION DIVISION  
1220 South St. Francis Dr.  
Santa Fe, NM 87505

Submit to Appropriate District Office  
State Lease - 4 Copies  
Fee Lease - 3 Copies

☒ AMENDED REPORT

WELL LOCATION AND ACREAGE DEDICATION PLAT

<sup>1</sup> API Number 30-045-33622	<sup>2</sup> Pool Code 71629	<sup>3</sup> Pool Name BASIN FRUITLAND COAL
<sup>4</sup> Property Code 19078	<sup>5</sup> Property Name WRIGHT 10	<sup>6</sup> Well Number #2
<sup>7</sup> OGRID No. 9812	<sup>8</sup> Operator Name CHEVRON	<sup>9</sup> Elevation 5800'

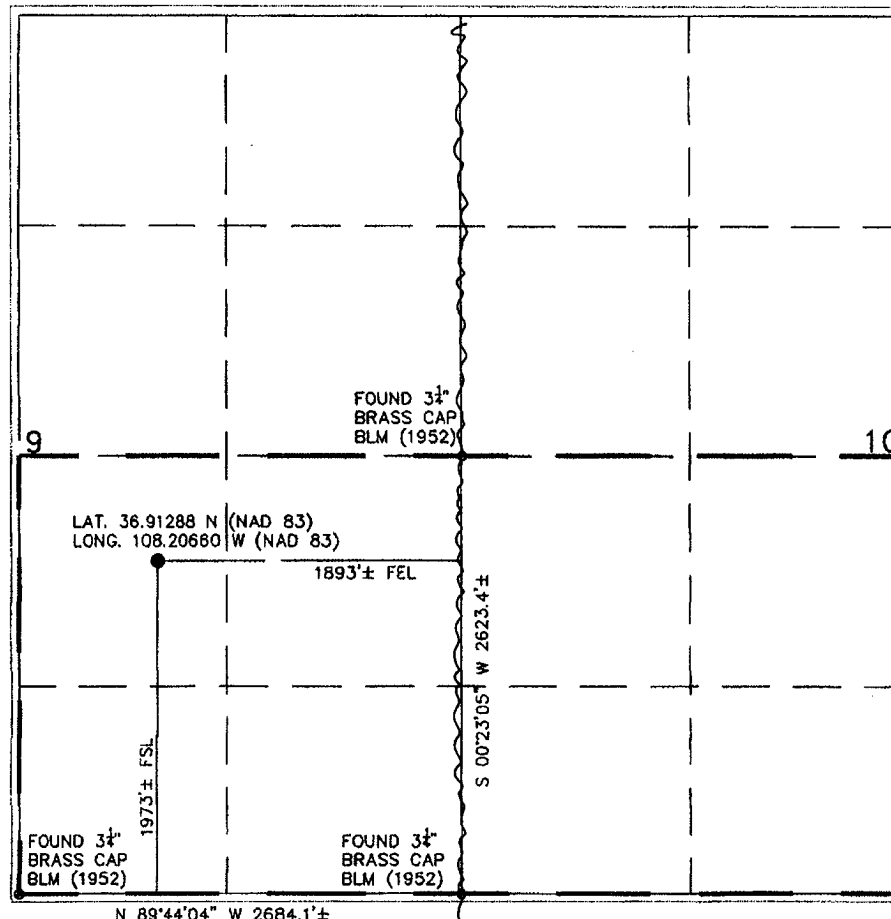
<sup>10</sup> Surface Location

UL or lot no.	Section	Township	Range	Lot 1dn	Feet from the	North/South line	Feet from the	East/West line	County
J	9	31-N	13-W		1973'	SOUTH	1893'	EAST	SAN JUAN

<sup>11</sup> Bottom Hole Location If Different From Surface

UL or lot no.	Section	Township	Range	Lot 1dn	Feet from the	North/South line	Feet from the	East/West line	County
<sup>12</sup> Dedicated Acres 320 SE/4 Sec.9 SW/4 Sec.10		<sup>13</sup> Joint or Infill Y		<sup>14</sup> Consolidation Code		<sup>15</sup> Order No. NSP1762(L)		RCVD MAR'S 07 OIL CONS. DIV. DIST. 3	

No allowable will be assigned to this completion until all interests have been consolidated or a non-standard unit has been approved by the division.



<sup>17</sup> OPERATOR CERTIFICATION

I hereby certify that the information contained herein is true and complete to the best of my knowledge and belief, and that this organization either owns a working interest or unleased mineral interest in the land including the proposed bottom hole location or has a right to drill this well at this location pursuant to a contract with an owner of such a mineral or working interest, or to a voluntary pooling agreement or a compulsory pooling order heretofore entered by the division.

*Paula Willman*  
Signature  
Paula Willman  
Printed Name

<sup>18</sup> SURVEYOR CERTIFICATION

I hereby certify that the well location shown on this plat was plotted from field notes of actual surveys made by me or under my supervision, and that the same is true and correct to the best of my belief.

NOV 14 2007  
Date  
Signature  
JONIA VUKOVICH  
NEW MEXICO  
REGISTERED PROFESSIONAL SURVEYOR  
14881  
Certificate Number

Location change

8/3/22/07

# CHEVRON WRIGHT 10 #2

1973 FEET FROM THE SOUTH LINE AND 1893 FEET FROM THE EAST LINE  
SECTION 9, TOWNSHIP 31 NORTH, RANGE 13 WEST  
SAN JUAN COUNTY, NEW MEXICO

## EIGHT POINT DRILLING PLAN rev.2

### 1. ESTIMATED FORMATION TOPS (KB):

Formation	Depth
Ojo Alamo	145
Kirtland	268
Fruitland	1485
Fruitland Coal	1735
Picture Cliffs	1960
TD	2160

### 2. NOTABLE ZONES AND PLAN FOR PROTECTION:

Gas or Oil Zones	Water Zones	Coal Zones
Fruitland		Fruitland
Pictured Cliffs	Ojo Alamo	
	Kirtland	

**Protection of oil, gas, water, or other mineral bearing formations:** Protection shall be accomplished by cementing all casing back to the surface.

### 3. PRESSURE CONTROL EQUIPMENT:

Maximum anticipated surface pressure is less than 3000 psi.

Pressure control equipment shall be in accordance with BLM minimum standards.

A casing head with an 11", 3000 psi flange will be welded onto the surface casing.

BOP stack will consist of either 2 single gate or a double gate and annular preventer. The gate preventers will be equipped with pipe rams on bottom and blind rams on top. The choke and kill lines will be connected to outlets below the bottom rams, utilizing either the ram body outlet or a drilling spool with side outlets. The BOP stack will be 11" or 13.625" bore, 3000 psi working pressure or greater. The choke and kill lines will be 3" bore, 3000 psi working pressure or greater. Please refer to attached schematic.

Test procedure and frequency shall be in accordance with BLM minimum standards for 3000 psi equipment, per BLM Oil & Gas Order #2.

#### **4. SUPPLEMENTAL DRILLING EQUIPMENT AND CASING INFORMATION:**

**Casing Information:** All casing will be new pipe and tested to 1500 psi.

Hole Size	O.D.	Weight (lb/ft)	Grade	Age	Connection	GL Setting Depth	Stage	Centralizers
12-1/4"	9-5/8"	36	J-55	New	LT&C	200.0	No	*
8-3/4"	7"	23	N-80	New	LT&C	2160.0	No	As needed

\*Centralizers will be placed on the bottom three joints and every fourth joint thereafter.

#### **Casing Design Information:**

Design Factors:	9-5/8"	7"
Collapse value new pipe	2020	3830
Actual Collapse Load	92	988
Collapse Safety Factor	22.1	3.9
Burst Value new pipe	3520	6340
Actual Burst Load	468	687
Burst Safety Factor	7.5	9.2
Tension value new pipe	564	442
Actual Tension Load	7.2	49.7
Tension Safety Factor	78.3	8.9

#### **Cement Information:**

	LEAD	LEAD	LEAD	LEAD	TAIL	TAIL	TAIL	TAIL	
CASING	TYPE	PPG	CF/SX	SX	TYPE	PPG	CF/SX	SX	EXCESS
9-5/8"	Class B	15.6	1.18	130	---	---	---	---	100%
7"	Class B	12.5	2.09	160	Class B	14.5	1.4	180	45%

**5. CIRCULATING MEDIUM AND MUD TYPE:**

Depth	Type	Wt./ppg	Viscosity	Fluid Loss	pH
Spud – 200'	FW - Spud	8.8 –	36 - 42	NC	
200' – 1685'	Water	8.5 –	32 - 36	NC	10.0 – 10.5
1685' – TD	FW – FW Gel / Drispac R	8.7 –	35 – 38 45 at TD	< 10	10.0 – 10.5

**6. ANTICIPATED TYPE AND AMOUNT OF LOGGING, CORING, AND TESTING:**

Open hole logs are planned. No cores or drill stem tests are planned.

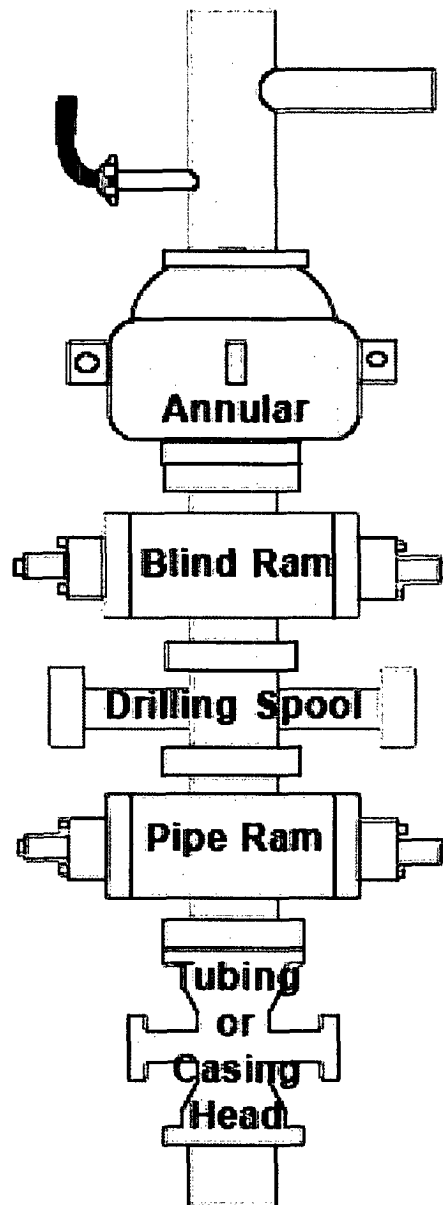
**7. EXPECTED BOTTOM HOLE PRESSURE AND ANY ANTICIPATED ABNORMAL PRESSURE, TEMPERATURES, OR OTHER HAZARDS (H<sub>2</sub>S, STEAM, ETC.) AND ASSOCIATED CONTINGENCY PLANS:**

No abnormal pressures, temperatures, nor hydrogen sulfide are expected. Maximum pressure will be less than 3000 psi.

**8. OTHER:**

The anticipated spud date is August 22, 2007. It is expected it will take approximately eight (8) days to drill and twelve (12) days to complete the well. Completion will start approximately one month after the spud.

## CLASS III BOP SCHEMATIC



## CLASS III CHOKE SCHEMATIC

