

NEW MEXICO OIL CONSERVATION DIVISION

This form is not to be used for reporting packer leakage tests in Southeast New Mexico

NORTHWEST NEW MEXICO PACKER LEAKAGE TEST

Federal 1-149-IND-8486

Operator BP America Production Company Lease Name Gallegos Canyon Unit Well No. 328

Location Of Well: Unit Letter N Sec 33 Twp 29N Rge 12W API # 30-045-24735

	Name of Reservoir or Pool	Type of Prod. (Oil or Gas)	Method of Prod. (Flow or Art. Lift)	Prod. Medium (Tbg. Or Csg.)
Upper Completion	FRUITLAND SAND	GAS	FLOW	TBG
Lower Completion	MESA VERDE	SWD ZONE	INJECTION	TBG

Pre-Flow Shut-In Pressure Data

Upper Completion	Hour, Date, Shut-In	Length of Time Shut-In	SI Press. Psig	Stabilized? (Yes or No)
	0900 / 4/23/07	72 HRS	70 Tbg / 74 Csg	YES
Lower Completion	Hour, Date, Shut-In	Length of Time Shut-In	SI Press. Psig	Stabilized? (Yes or No)
	0900 / 4/23/07	72 HRS	770	YES

Flow Test No. 1

Commenced at (hour, date)*				Zone producing (Upper or Lower):	
Time (Hour, Date)	Lapsed Time Since*	Pressure		Prod. Zone Temp.	Remarks
		Upper Compl.	Lower Compl.		
0900 4/26/07	1 HR	70 Tbg/74 Csg	870		RCVD MAY 11 '07
1300 4/26/07	4 HRS	73 Tbg/78 Csg	860		OIL CONS. DIV.
1700 4/26/07	8 HRS	73 Tbg/75 Csg	862		DIST. 3
0900 4/27/07	24 HRS	72 Tbg/75 Csg	880		

Production rate during test

WATER: 530 BWPD based on 530 Bbls. In 24 Hrs.

Gas: 0 MCFPD; Test thru (Orifice or Meter): _____

Mid-Test Shut-In Pressure Data

Upper Completion	Hour, Date, Shut-In	Length of Time Shut-In	SI Press. Psig	Stabilized? (Yes or No)
	0900 / 4/23/07	184 HRS	80 Tbg / 74 Csg	YES
Lower Completion	Hour, Date, Shut-In	Length of Time Shut-In	SI Press. Psig	Stabilized? (Yes or No)
	0900 / 4/27/07	72 HRS	775	YES

(Continue on reverse side)

Flow Test No. 2

Commenced at (hour, date)**		Zone producing (Upper or Lower):			
Time (Hour, Date)	Lapsed Time Since**	Pressure		Prod. Zone Temp.	Remarks
		Upper Compl.	Lower Compl.		
0900 5/1/07	1 DAY	10 Tbg/40 Csg	780		
0900 5/2/07	2 DAYS	7 Tbg / 7 Csg	765		
0900 5/3/07	3 DAYS	5 Tbg / 7 Csg	760		
0900 5/4/07	4 DAYS	10 Tbg/10 Csg	775		

Production rate during test

WATER: 0 BWPD based on 0 Bbls. In 24 Hrs.

Gas: 70 MCFPD; Test thru (Orifice or Meter): .625

Remarks:

I hereby certify that the information herein contained is true and complete to the best of my knowledge.

MAY 11 2007

Approved _____ 20 _____
New Mexico Oil Conservation Division

Operator BP America Production Company

By H. Jilpanueva

By Larry Schlotterback

Title DEPUTY OIL & GAS INSPECTOR, DIST. #1

Title Field Environmental Coordinator

E-mail Address Larry.Schlotterback@bp.com

Date 5/8/2007

Northwest New Mexico Packer Leakage Test Instructions

1. A packer leakage test shall be commenced on each multiply completed well within seven days after actual completion of the well, and annually thereafter as prescribed by the order authorizing the multiple completion. Such tests shall also be commenced on all multiple completions within seven days following recompletion and/or chemical or fracture treatment, and whenever remedial work has been done on a well during which the packer or the tubing have been disturbed. Tests shall also be taken at any time that communication is suspected or when requested by the Division.

2. At least 72 hours prior to the commencement of any packer leakage test, the operator shall notify the Division in writing of the exact time the test is to be commenced. Offset operators shall also be so notified.

3. The packer leakage test shall commence when both zones of the dual completion are shut-in for pressure stabilization. Both zones shall remain shut-in until the well-head pressure in each has stabilized, provided however, that they need not remain shut-in more than seven days.

4. For Flow Test No. 1, one zone of the dual completion shall be produced at the normal rate of production while the other zone remains shut-in. Such test shall be continued for seven days in case of a gas well and 24 hours in the case of an oil well. Note: if, on an initial packer leakage test, a gas well is being flowed to the atmosphere due to the lack of a pipeline connection the flow period shall be three hours.

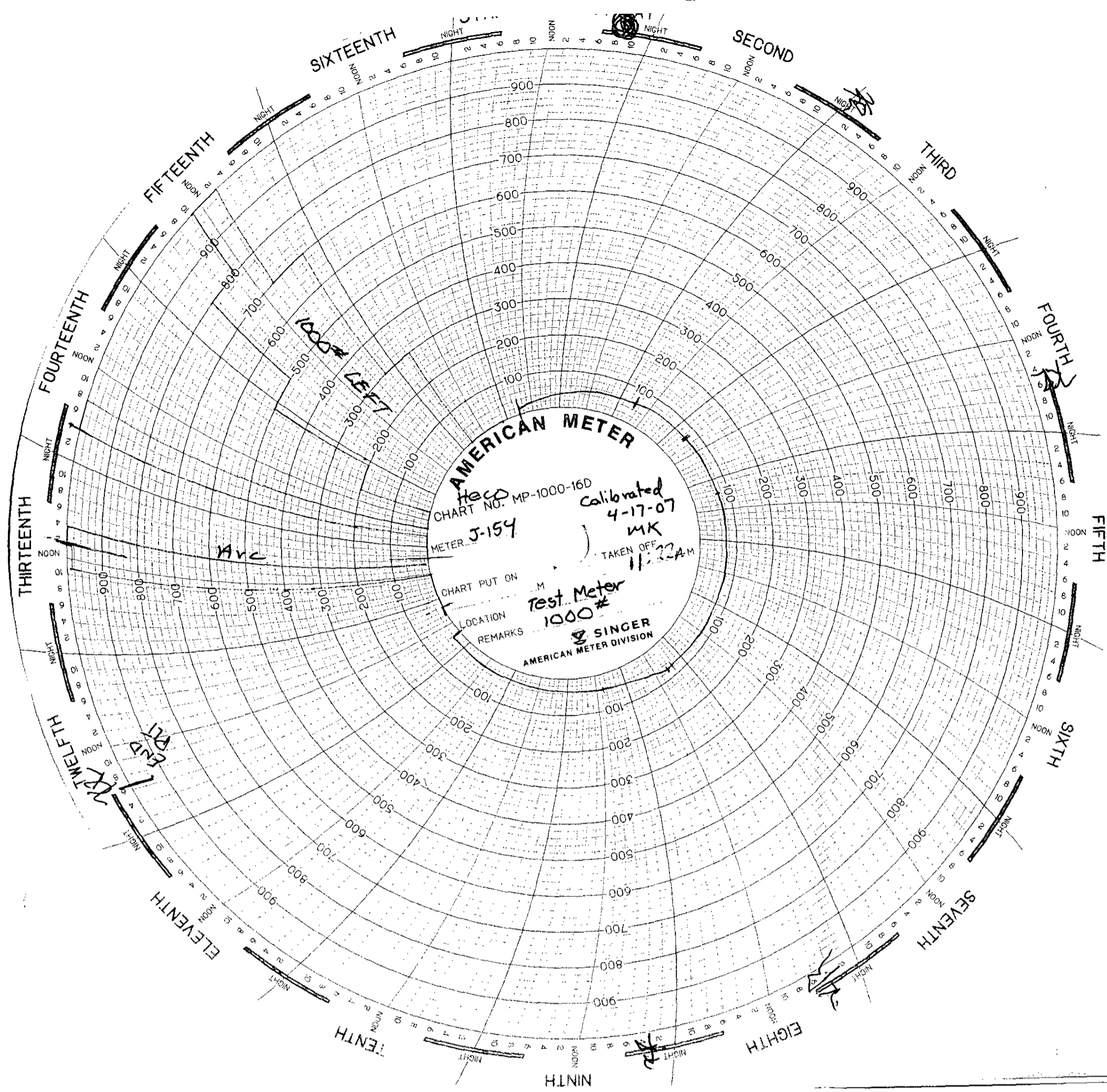
5. Following completion of Flow Test No. 1, the well shall again be shut-in, in accordance with Paragraph 3 above.

6. Flow Test No. 2 shall be conducted even though no leak was indicated during Flow Test No. 1. Procedure for Flow Test No. 2 is to be the same as for Flow Test No. 1 except that the previously produced zone shall remain shut-in while the zone which was previously shut-in is produced.

7. Pressures for gas-zone tests must be measured on each zone with a deadweight pressure gauge at time intervals as follows: 3 hour tests: immediately prior to the beginning of each flow-period, at fifteen-minute intervals during the first hour thereof, and at hourly intervals thereafter, including one pressure measurement immediately prior to the beginning of each flow period, at least one time during each flow period (at approximately the midway point) and immediately prior to the conclusion of each flow period. Other pressures may be taken as desired, or may be requested on wells which have previously shown questionable test data.

24-hour oil zone tests: all pressures, throughout the entire test, shall be continuously measured and recorded with recording pressure gauges the accuracy of which must be checked at least twice, once at the beginning and once at the end of each test, with a deadweight pressure gauge. If a well is a gas-oil or an oil-gas dual completion, the recording gauge shall be required on the oil zone only, with deadweight pressures as required above being taken on the gas zone.

8. The results of the above-described tests shall be filed in triplicate within 15 days after completion of the test. Tests shall be filed with the Aztec District Office of the New Mexico Oil Conservation Division on Northwest New Mexico Packer Leakage Test Form Revised 11-16-98, with all deadweight pressures indicated thereon as well as the flowing temperatures (gas zones only) and gravity and GOR (oil zones only).



AMERICAN METER

Heco
CHART NO. MP-1000-16D
METER J-154
Calibrated 4-17-07
MK
TAKEN OFF 11:22 AM
CHART PUT ON M
Test Meter 1000 #
LOCATION
REMARKS
SINGER
AMERICAN METER DIVISION

SIXTEENTH

SECOND

FIFTEENTH

THIRD

FOURTEENTH

FOURTH

THIRTEENTH

FIFTH

TWELFTH

SIXTH

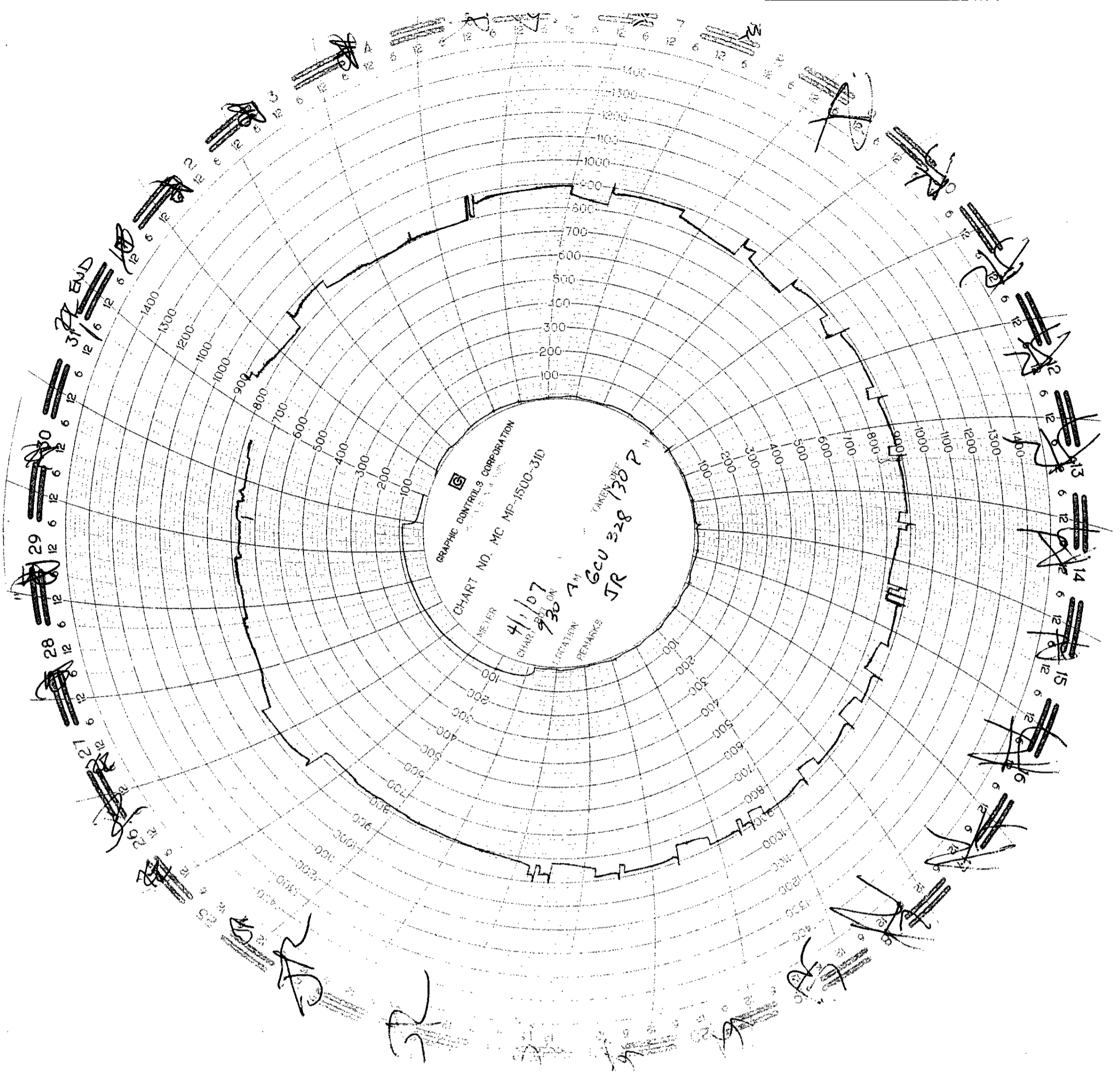
ELEVENTH

SEVENTH

TENTH

EIGHTH

NINTH



377 END

29

28

27

26

25

24

23

22

21

20

19

18

17

16

15

14

13

12

11

10

9

8

7

6

5

4

3

2

1