

Form 3160-3
(August 1999)

2007 MAY -4 AM 10: 59

FORM APPROVED
OMB NO. 1004-0136
Expires: November 30, 2000

UNITED STATES
DEPARTMENT OF THE INTERIOR
BUREAU OF LAND MANAGEMENT
APPLICATION FOR PERMIT TO DRILL OR REENTER

RECEIVED

1a. TYPE OF WORK ☒ DRILL ☐ REENTER
b. TYPE OF WELL ☐ OIL ☒ GAS WELL ☐ OTHER ☐ SINGLE ZONE ☐ MULTIPLE ZONE

2. Name of Operator

Coleman Oil & Gas, Inc.

3a. Address

P.O. Drawer 3337, Farmington N.M. 87499

3b. Phone No. (include area code)

(505) 327-0356

4. Location of well (Report location clearly and in accordance with any State requirements. *)

At surface

700' FSL, 1000' FWL Latitude 36.308213°, Longitude 107.995261°

At proposed prod. zone

14. DISTANCE IN MILES AND DIRECTION FROM NEAREST TOWN OR POST OFFICE*

South East of Farmington New Mexico on County RD. 7500 approximately 60 miles.

12. County or Parish

San Juan

13. State

NM

15. Distance from proposed*
location to nearest
property or lease line, ft.
(Also to nearest drig unit line, if any)

700

16. No. of Acres in lease

840.32

17. Spacing Unit dedicated to this well

320.14-320 ACRES W/2

18. Distance from proposed location*
to nearest well, drilling, completed,
applied for, on this lease, ft.

2657

19. Proposed Depth

1215'

20. BLM/ BIA Bond No. on file

BLM Blacket Bond #08510612

21. ELEVATIONS (Show whether DF, RT, GR, etc.)

6482'

22. Approximate date work will start*

August-07

23. Estimated Duration

2 Weeks

24. Attachments

The following, completed in accordance with the requirements of Onshore Oil and Gas Order No. 1 shall be attached to this form:

- Well plat certified by a registered surveyor.
- A Drilling Plan.
- A Surface Use Plan (if the location is on National Forest System Lands, the SUPO shall be filed with the appropriate Forest Service Office).
- Bond to cover the operations unless covered by existing bond on file(see item 20 above).
- Operator certification.
- Such other site specific information and/ or plans as may be required by the a authorized officer.

25. Signature

Michael T. Hanson

Name (Printed/ Typed)

Michael T. Hanson

DATE

1-May-07

Title

Operations Engineer

Approved By (Signature)

D. Manley

Name (Printed/ Typed)

DATE

5/15/07

Title

Office

FFO

Application approval does not warrant or certify that the applicant holds legal or equitable title to those rights in the subject lease which would entitle the applicant to conduct operations thereon.

Conditions of approval, if any, are attached.

Title 18 U.S.C. Section 1001 and Title 43 U.S.C. Section 1212, make it a crime for any person knowingly and willfully to make to any department or agency of the United States any false, fictitious or fraudulent statements or representations as to any matter within its jurisdiction.

*See Instructions On Reverse Side

NOTIFY AZTEC OCD 24 HRS.
PRIOR TO CASING & CEMENT

DISTRICT I
P.O. Box 1980, Hobbs, N.M. 88241-1980

DISTRICT II
811 South First, Artesia, N.M. 88210

DISTRICT III
1000 Rio Brazos Rd., Aztec, N.M. 87410

DISTRICT IV
2040 South Pacheco, Santa Fe, NM 87504-2088

State of New Mexico
Energy, Minerals & Natural Resources Department

OIL CONSERVATION DIVISION

P.O. Box 2088
Santa Fe, NM 87504-2088

Form C-102

Revised February 21, 1994

Instructions on back

Submit to Appropriate District Office

State Lease - 4 Copies

Fee Lease - 3 Copies

2007 MAY -4 AM 10:59

AMENDED REPORT

WELL LOCATION AND ACREAGE DEDICATION PLAT

¹ API Number 30-045-34303	² Pool Code 71629	³ Pool Name Basin Fruitland Coal
⁴ Property Code 35877	⁵ Property Name JUNIPER WEST COM 15	⁶ Well Number 14
⁷ GRID No. 4838	⁸ Operator Name COLEMAN OIL & GAS, INC.	⁹ Elevation 6482

¹⁰ Surface Location

UL or lot no.	Section	Township	Range	Lot Idn	Feet from the	North/South line	Feet from the	East/West line	County
M	15	24 N	11 W		700	SOUTH	1000	WEST	SAN JUAN

¹¹ Bottom Hole Location If Different From Surface

UL or lot no.	Section	Township	Range	Lot Idn	Feet from the	North/South line	Feet from the	East/West line	County

¹² Dedicated Acres 320.19	¹³ Joint or Infill w/p	¹⁴ Consolidation Code	¹⁵ Order No.
OIL CONS. DIV. DIST. 3			

NO ALLOWABLE WILL BE ASSIGNED TO THIS COMPLETION UNTIL ALL INTERESTS HAVE BEEN CONSOLIDATED
OR A NON-STANDARD UNIT HAS BEEN APPROVED BY THE DIVISION

16 S 89°23'26" E 2674.45'	2627.38'	S 89°26'54" E 2626.88'	17 OPERATOR CERTIFICATION I hereby certify that the information contained herein is true and complete to the best of my knowledge and belief Signature: Michael T. Hanson Printed Name: Michael T. HANSON Title: OPERATIONS Engineer Date: May 1, 2007
N 1°58'44" W 2675.58'	SECTION 15		18 SURVEYOR CERTIFICATION I hereby certify that the well location shown on this plat was plotted from field notes of actual surveys made by me under my supervision, and that the same is true and correct to the best of my belief. Date of Survey: 9/15/06 Signature and Seal of Professional Surveyor: ROBERT L. POWERS Certificate Number: 6846
N 2°03'29" W 1000'	LAT. N 36.308213° LONG. W 107.995261° NAD 83	N 89°09'27" W 2547.00'	
N 89°09'30" W 700'	2547.04'		

Submit 3 Copies To Appropriate District Office
District I
1625 N. French Dr., Hobbs, NM 88240
District II
1301 W. Grand Ave., Artesia, NM 88210
District III
1000 Rio Brazos Rd., Aztec, NM 87410
District IV
1220 S. St. Francis Dr., Santa Fe, NM 87505

State of New Mexico
Energy, Minerals and Natural Resources

Form C-103
May 27, 2004

OIL CONSERVATION DIVISION
1220 South St. Francis Dr.
Santa Fe, NM 87505

SUNDRY NOTICES AND REPORTS ON WELLS (DO NOT USE THIS FORM FOR PROPOSALS TO DRILL OR TO DEEPEN OR PLUG BACK TO A DIFFERENT RESERVOIR. USE "APPLICATION FOR PERMIT" (FORM C-101) FOR SUCH PROPOSALS.)		WELL API NO. 34303 30-045-
1. Type of Well: Oil Well <input type="checkbox"/> Gas Well <input checked="" type="checkbox"/> Other <input type="checkbox"/>		5. Indicate Type of Lease STATE <input type="checkbox"/> FEE <input type="checkbox"/>
2. Name of Operator COLEMAN OIL & GAS, INC.		6. State Oil & Gas Lease No. NMNM-104608
3. Address of Operator P. O. DRAWER 3337, FARMINGTON, NM 87499		7. Lease Name or Unit Agreement Name JUNIPER WEST COM 15
4. Well Location Unit Letter: M 700' FSL & 1000' FWL Section 15 Township 24 N Range 11 W NMPM SAN JUAN County		8. Well Number 14
11. Elevation (Show whether DR, RKB, RT, GR, etc.) 6,482' GL		9. OGRID Number 4838
Pit or Below-grade Tank Application <input checked="" type="checkbox"/> or Closure <input type="checkbox"/>		
Pit type: <u>DRILLING</u> Depth to Groundwater: <u>>100'</u> Distance from nearest fresh water well: <u>>5,000'</u> Distance from nearest surface water: <u>>300'</u>		
Pit Liner Thickness: 12 mil Below-Grade Tank: Volume bbls; Construction Material		

12. Check Appropriate Box to Indicate Nature of Notice, Report or Other Data

NOTICE OF INTENTION TO:

PERFORM REMEDIAL WORK ☐ PLUG AND ABANDON ☐
TEMPORARILY ABANDON ☐ CHANGE PLANS ☐
PULL OR ALTER CASING ☐ MULTIPLE COMPL ☐

SUBSEQUENT REPORT OF:

REMEDIAL WORK ☐ ALTERING CASING ☐
COMMENCE DRILLING OPNS. ☐ P AND A ☐
CASING/CEMENT JOB ☐

OTHER: DRILLING PIT ☒

OTHER: ☐

13. Describe proposed or completed operations. (Clearly state all pertinent details, and give pertinent dates, including estimated date of starting any proposed work). SEE RULE 1103. For Multiple Completions: Attach wellbore diagram of proposed completion or recompletion.

Reserve pit will be lined with 12 mil reinforced plastic.

Will reclaim pit as soon as practical. Free liquids will be pumped off and disposed. Liner will be cut off at mud line. Excess liner will be hauled to county landfill. Pit will then be back filled when dry and reclaimed.

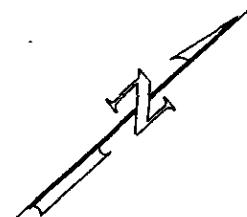
I hereby certify that the information above is true and complete to the best of my knowledge and belief. I further certify that any pit or below-grade tank has been/will be constructed or closed according to NMOC guidelines ☒ a general permit ☐ or an (attached) alternative OCD-approved plan ☐.

SIGNATURE Brian Wood TITLE: CONSULTANT DATE: NOVEMBER 10, 2006

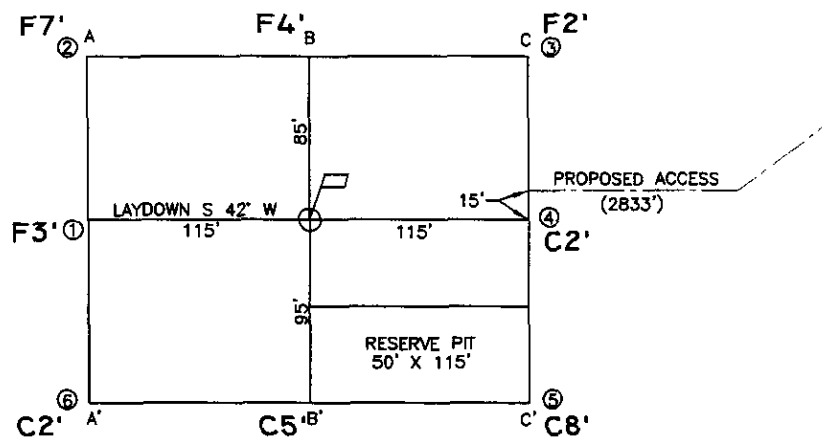
Type or print name: BRIAN WOOD E-mail address: brian@permitswest.com Telephone No.: (505) 466-8120
For State Use Only

APPROVED BY: [Signature] TITLE: **DEPUTY OIL & GAS INSPECTOR, DIST. #1** DATE: **MAY 18 2007**
Conditions of Approval (if any):

INOTIFY
NEW MEXICO ONE-CALL
BEFORE COMMENCING
EXCAVATION!
(800) 321-2537



0 50 100
SCALE: 1"=100'



A-A' ℰ

6500				
6490				
6480				
6470				
6460				

B-B' ℰ

6500				
6490				
6480				
6470				
6460				

C-C' ℰ

6500				
6490				
6480				
6470				
6460				

CROSS SECTIONS
HORIZONTAL: 1"=100'
VERTICAL: 1"=100'

LEASE: JUNIPER WEST COM 15 #14
FOOTAGE: 700' FSL, 1000'FWL
SEC. 15 TWN. 24 N RNG. II W N.M.P.M.
LATITUDE: N 36.308213° LONGITUDE: W 107.995261°
ELEVATION: 6482

COLEMAN OIL & GAS, INC.
FARMINGTON, NEW MEXICO

SURVEYED: 9/15/06	REV. DATE:	APP. BY R.P.
DRAWN BY: A.D.	DATE DRAWN: 9/18/06	FILE NAME: 7150C01

UNITED
FIELD SERVICES INC.

P.O. BOX 3651
FARMINGTON, NM 87499
OFFICE: (505) 334-0408

Thursday, May 3, 2007

OPERATIONS PLAN

Well Name: Juniper West Com 15 #14
Location: 700' FSL, 1000' FWL, Section 15, T-24-N, R-11-W, NMPM
San Juan County, NM
Formation: Basin Fruitland Coal
Elevation: 6482' GL

Formation:	Top	Bottom	Contents
Nacimiento	Surface	205'	Aquifer
Ojo Alamo	205'	315'	Aquifer
Kirtland	315'	725'	
Fruitland	725'	1015'	Gas
Pictured Cliffs	1015'	1215'	Gas
Total Depth	1215'		

Drilling Contractor: Availability

Mud Program:

Interval	Type	Weight	Viscosity	Fluid Loss
0' – 120'	Spud	8.4 – 9.0	40 – 50	No Control
120' – 1215'	Non-dispersed	8.4 – 9.0	30 – 60	6cc or less

Logging Program: Porosity Log - Triple Litho Density W/ GR and CAL.
Induction Log – Array Induction W/ GR and SP

Coring Program: None

Casing Program:

Hole Size	Depth Interval	Casing Size	Weight	Grade
12 1/4"	0' – 120'	8 5/8"	24#	J-55 or K-55
7 7/8"	120' – 1215'	5 1/2"	15.5#	J-55 or K-55

Tubing Program:

0' – 1045'	2 7/8"	6.50#	J-55
------------	--------	-------	------

Float Equipment:

8 5/8" surface casing - saw tooth guide shoe. One Centralizer.

5 1/2" production casing – Cement guide shoe and self fill insert float collar. Place float one joint above shoe. Five centralizers spaced every other joint above shoe and five centralizers every other joint from top of well straddling Ojo Alamo.

Wellhead Equipment:

8 5/8" x 5 1/2" Braiden Head and 5 1/2" x 2 7/8" Tubing Head. Independent Well Head assembly with a minimum rated working pressure of 1000 psig.

Cementing:

8 5/8" Surface Casing -

Cement with 92 sacks Class "B" cement with 1/4# celloflake/sx and 2% calcium chloride (108.56 cu. ft.) of slurry, 100% excess to circulate to surface). WOC 12 hrs. Test casing to 750 psi/30 minutes.

5 1/2" Production Casing -

Before cementing circulate hole with at least 1 1/2 hole volumes of mud. Precede cement with 20 bbls of fresh water. Lead with 114 sacks (297.54 cu. ft) of Class "G" with 3% D79 and 1/4# Per sack D29. (Yield = 2.61 cu. ft. /sack; slurry weight = 11.7 PPG). Tail with 90 sacks (113.4 cu. ft.) of Class "G" 50/50 POZ with 2% GEL D-20, 5# Per sack Gilsonite, .1% D46, 1% S-1 and 1/4# Per sack D29. (Yield = 1.26 cu. ft./sack; slurry weight = 13.5 PPG). Total cement volume is 410.94 cu. ft. (100% excess on open hole, calculated on cement volumes).

BOP and Tests:

Surface to Surface Total Depth – None

Surface TD to Total Depth – Annular or Double Ram Type 2000 psi (minimum) double gate BOP stack (Reference Figure #1, #2, #3). Prior to drilling out surface casing, test blind rams and casing to 750 psig for 30 minutes; all pipe rams and choke assembly to 750 psig for 30 minutes each.

From Surface TD to Total Depth - choke manifold (Reference Figure #3).

Pipe rams will be actuated at least once each day and blind rams actuated once each trip to test proper functioning. An upper kelly cock valve with handle and drill string safety valves to fit each drill string will be maintained and available on the rig floor.

Additional information:

- The Fruitland Coal formation will be completed.
- Anticipated pore pressure for the Fruitland is 250 psi.
- New casing will be utilized.
- Pipe movement (either rotation or reciprocation) will be done if hole conditions permit.

Date:

May 3, 2007

Drilling Engineer:

Michael T. Jones

Cementing Usage Plan

Juniper West Com 15 #14

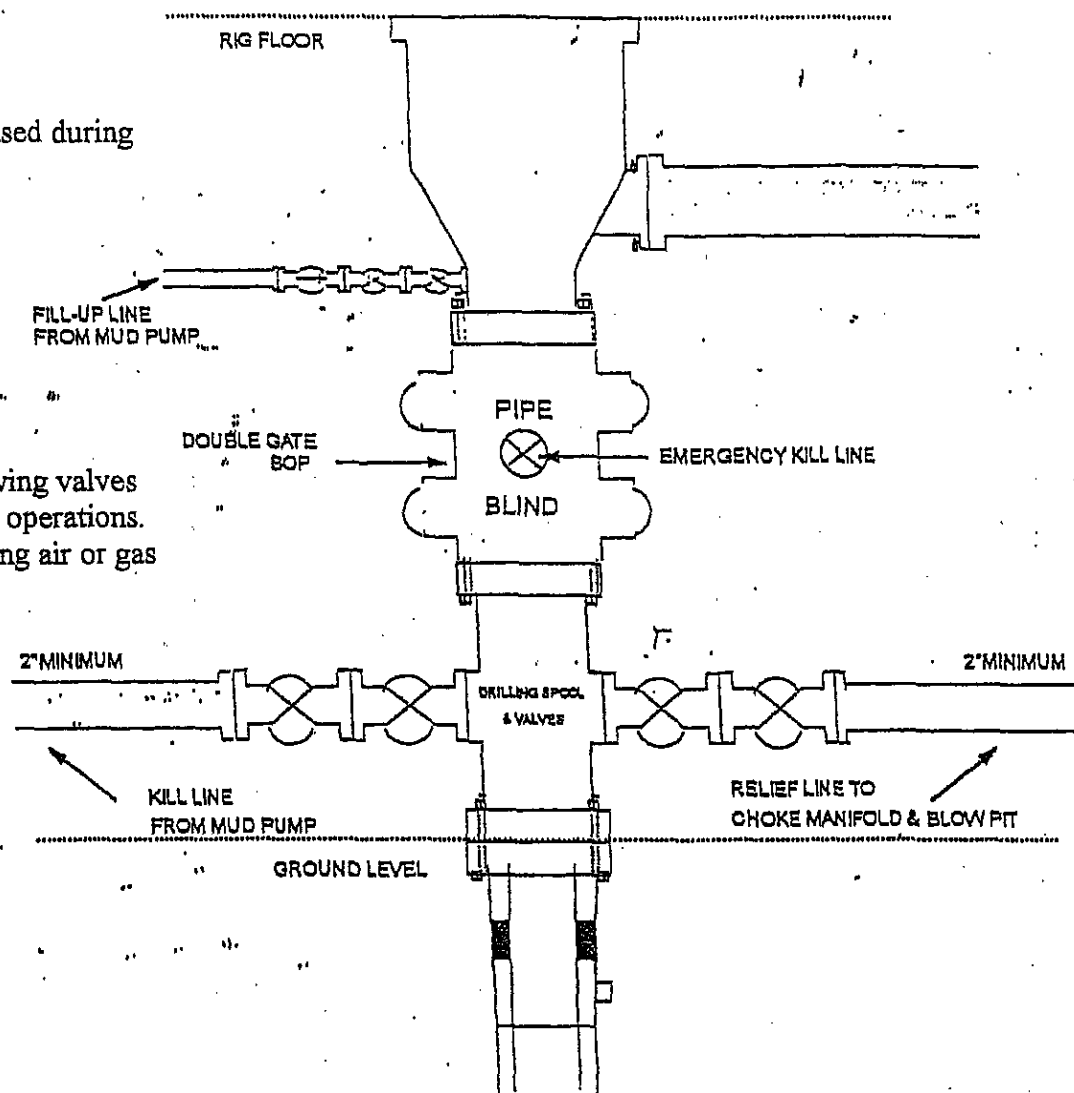
Enter Surface Casing Depth	120	FT
Enter capacity between Surf casin/ hole	0.41271	cu ft per ft
Enter Yield for surface cement job	1.18	cu ft per sack
Enter capacity between Prod/Surface Casings	0.19259	cu ft per ft
Enter Total Depth	1215	FT
Enter Shoe Joint Length	44	FT
Enter PBTD	1171	FT
Enter Capacity between Production/Hole	0.17325	cu ft. per ft
Enter Lead Cement Yield	2.61	cu ft per sack
Enter Tail Cement Yield	1.26	cu ft per sack
Enter Production Casing Capacity	0.0238	bbl per ft
Enter Amount of Tail Cement Required	90	Sacks

Surface Cement Needed (100% excess)	92	Sacks	→	108.56	cu ft
TOTAL HOLE REQUIREMENTS	408.41	cu ft of cement			
Lead Cement	→ 114	Sacks	→	297.54	cu ft
Tail Cement	→ 90	Sacks	→	113.40	cu ft
TOTAL CEMENT VOLUME	410.94	cu ft			

BOP Configuration 2M psi System

Rotating head will be used during
air or gas drilling only.

Drilling spool single wing valves
during normal drilling operations.
Dual wing valves during air or gas
drilling.



13 5/8" and 11" Bore, 2000psi minimum working pressure double gate BOP to be equipped with blind and pipe rams: A Schaffer Type 50 or equivalent rotating head to be installed on the top of the BOP. All equipment is 2000psi working pressure/ or greater.

FIGURE #1

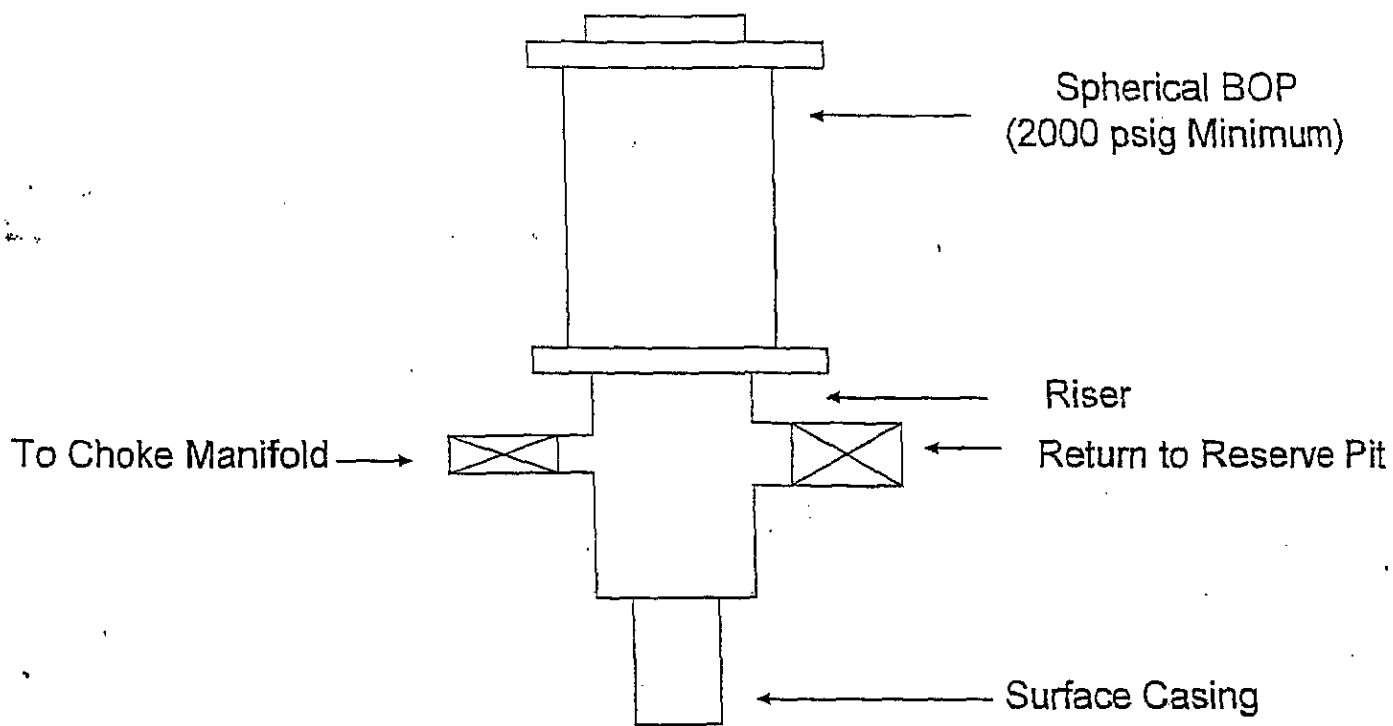
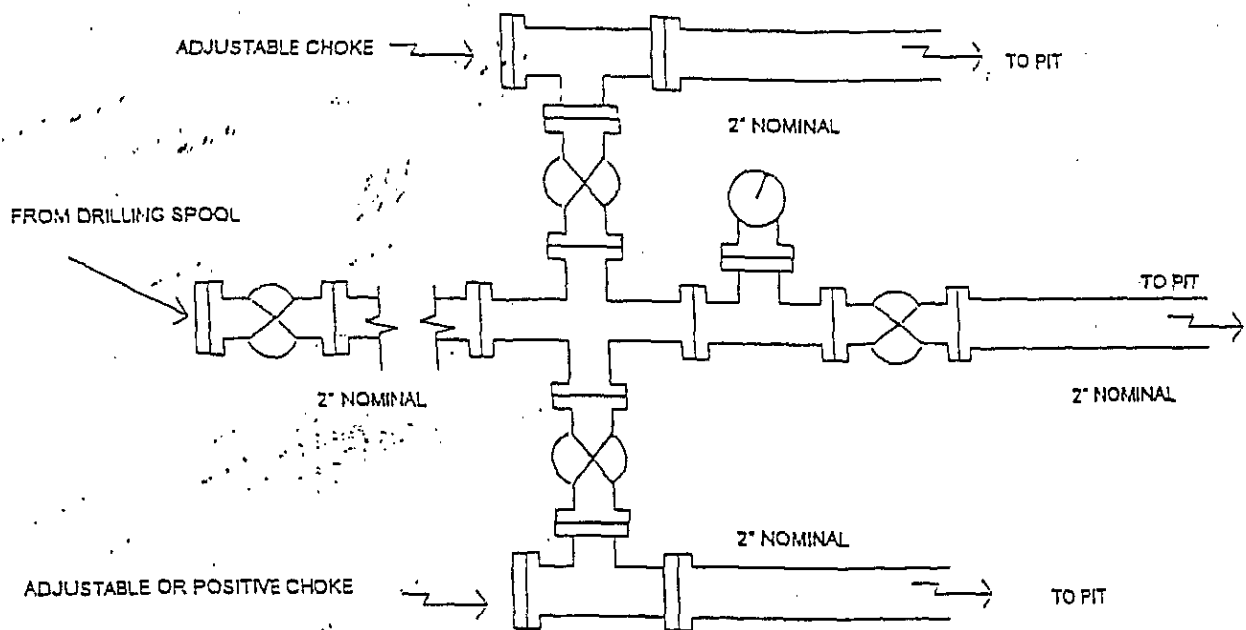


FIGURE #2

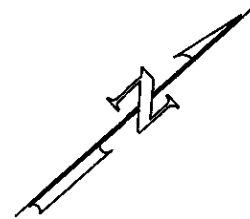
Choke Manifold Configuration 2M System



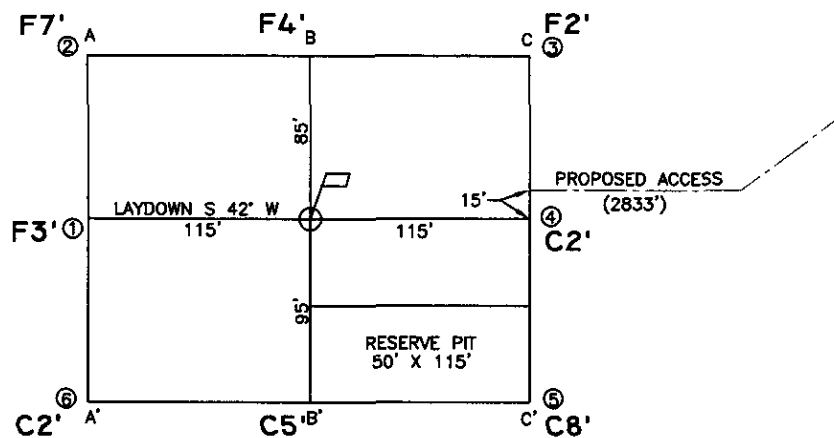
Minimum choke manifold installation from surface to Total Depth.
2" minimum, 2000psi working pressure equipment with two chokes.

Figure #3

NOTIFY
NEW MEXICO ONE-CALL
BEFORE COMMENCING
EXCAVATION!
(800) 321-2537



0 50 100
SCALE: 1"=100'



A-A' E

6500				
6490				
6480				
6470				
6460				

B-B' E

6500				
6490				
6480				
6470				
6460				

C-C' E

6500				
6490				
6480				
6470				
6460				

CROSS SECTIONS
HORIZONTAL: 1"=100'
VERTICAL: 1"=100'

LEASE: JUNIPER WEST COM I5 #14
FOOTAGE: 700' FSL, 1000'FWL
SEC. 15 TWN. 24 N RNG. II W N.M.P.M.
LATITUDE: N 36.308213° LONGITUDE: W 107.995261°
ELEVATION: 6482

COLEMAN OIL & GAS, INC.
FARMINGTON, NEW MEXICO

SURVEYED: 9/15/06	REV. DATE:	APP. BY R.P.
DRAWN BY: A.D.	DATE DRAWN: 9/18/06	FILE NAME: 7150C01



P.O. BOX 3651
FARMINGTON, NM 87499
OFFICE: (505) 334-0408