

RECEIVED

2003 SEP -8 AM 11:42

070 Farmington, NM

FORM 3160-5
(June 1990)

UNITED STATES
DEPARTMENT OF THE INTERIOR
BUREAU OF LAND MANAGEMENT

FORM APPROVED
Budget Bureau No. 1004-0135
Expires: March 31, 1993

SUNDRY NOTICES AND REPORTS ON WELLS

Do not use this form for proposals to drill or to deepen or reenter a different reservoir.

Use "APPLICATION FOR PERMIT -" for such proposals

SUBMIT IN TRIPLICATE

1. Type of Well

Oil ☐ Well Gas ☒ Well ☐ Other

2. Name of Operator

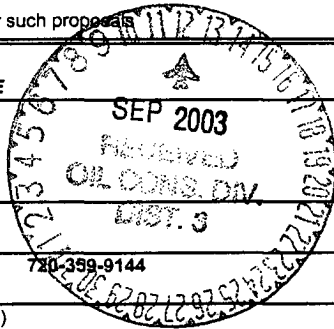
Calpine Natural Gas L.P.

3. Address and Telephone No.

1200 17th Street, Suite 770, Denver, CO 80202

4. Location of Well (Footage, Sec., T., R., M., or Survey Description)

1850' FSL & 790' FEL Sec. 22-T30N-14W



5. Lease Designation and Serial No.

NM 20314

6. If Indian, Allottee or Tribe Name

7. If Unit or CA, Agreement Designation

8. Well Name and No.

Roosevelt #1

9. API Well No.

30-045-26458

10. Field and Pool, or Exploratory Area

Basin Dakota

11. County or Parish, State

San Juan County, New Mexico

12. CHECK APPROPRIATE BOX(es) TO INDICATE NATURE OF NOTICE, REPORT, OR OTHER DATA

TYPE OF SUBMISSION

☐ Notice of Intent
☐ Subsequent Report
☒ Final Abandonment Notice

TYPE OF ACTION

☒ Abandonment
☐ Recompletion
☐ Plugging Back
☐ Casing Repair
☐ Altering Casing
☐ Other
☐ Change of Plans
☐ New Construction
☐ Non-Routine Fracturing
☐ Water Shut-Off
☒ Conversion to Injection
☐ Dispose Water

(Note: Report results of multiple completion on Well Completion or Recompletion Report and Log form.)

13. Describe Proposed or Completed Operations (Clearly state pertinent details, and give pertinent dates including estimated date of starting any proposed work. If well is directionally drilled, give subsurface locations and measured and true vertical depths for all markers and zones pertinent to this work.)*

Spotted 50 sx. (59 cu.ft.) across Dakota.
Spotted 15 sx. (18 cu.ft.) across Gallup.
Spotted 16 sx. (19 cu.ft.) across Cliff House.
Spotted 45 sx. (53 cu.ft.) across Pictured Cliffs and Basin Fruitland Coal.
Spotted 21 sx. (25 cu.ft.) surface plug.
All cement Class "B". Completed 5/19/03. Witnessed by BLM

14. I hereby certify that the foregoing is true and correct

Signed Hugo Cartaya Title Production Manager Date 09/03/03

(This space for Federal or State office use)

Approved by _____ Title _____ Date _____
Conditions of approval, if any:

Title 18 U.S.C. Section 1001, makes it a crime for any person knowingly and willfully to make to any department or agency of the United States any false, fictitious or fraudulent statements or representations as to any matter within its jurisdiction.

*See Instructions on Reverse Side

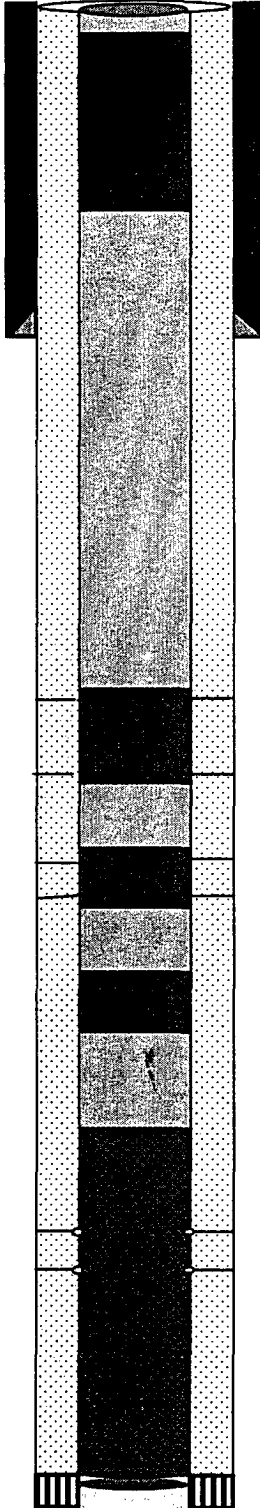
ACCEPTED FOR RECORD

SEP 09 2003

NMOCD

SAVED BY Jim OFFICE

ROOSEVELT #1



Surface Cement Plug 21 Sx (25 Cu. Ft.)

Surface 1850' FSL & 790' FEL
NESE Sec 22 T30N R14W
Field Basin Dakota
County San Juan
State New Mexico
API No. 30-045-26458
Lease N: NM-20314
G.L. Ele 5647'
K.B. Ele 5661'

Fruitland PC Cement Plug 45 Sx (53 Cu. Ft.)

Cliff House Cement Plug 16 Sx (19 Cu. Ft.)

Gallop Cement Plug 15 Sx (18 Cu. Ft.)

Dakota Cement Plug 50Sx (59 Cu. Ft.)

PBTD 6,096'
TD 6,159'

WORKOVER AND COMPLETION REPORT

Operator: Calpine Natural Gas **Well Name:** Roosevelt #1
Date: 20-May-03 **Report #:** 2
Field: Basin DakotaMV SWD **Location:** 22/30N/14W **County:** San Juan **State:** NM
Contractor: LCE Well Service Rig #3 **Supervisor:** Paul Thompson

Work Summary:

Tubing is set at 3834' KB (below Point Lookout top). Rigged up Halliburton. Established circulation with water. Mixed and pumped 16 sx (19 cu.ft.) of C1 "B" cement. Displaced cement with 13 bbls of water. POH to 2926' KB. Plugged Cliff House top with 16 sx (19 cu.ft.) of C1 "B" cement. Displaced cement with 9.5 bbls of water. POH to 1379' KB. Plugged Pictured Cliffs and Fruitland with 45 sx (53 cu.ft.) of C1 "B" cement. Displaced cement with 2 bbls of water. POH to 294' KB. Set surface plug with 21 sx (25 cu.ft.) of CL "B" cement. POH with the remaining tubing. Nipped down the BOP and filled the hole with cement. Hole was standing full. Plugging job witnessed by the BLM. Rigged down and moved to the Morton #2.

Daily Costs:

Road & Location
 Rig Costs
 Equipment Rental
 Logging & Perforating
 Stimulation solvent
 Testing
 Cementing
 Completion Fluids (City water)
 Contract Services
 Miscellaneous Supplies
 Engr. & Supervision
 Slick line
 Other (csg. head)

	\$1,050
	\$4,678
	\$200
	\$267

Tubulars
 Wellhead Equipment
 Subsurface Equipment
 Artificial Lift Equipment
 Sucker Rods
 Tanks
 Bailer
 Flowlines
 Installation/Labor
 Fittings, Valves, Etc..
 Meters, Lact, Etc..
 Electrical Equipment

Total Daily Costs \$6,195
Cumulative Costs \$8,358

Well Record

ID:	6159	Run in well			
PBTD:	6096	Tubing	Joints	Grade	
Casing Size:	4-1/2", 11.6#	Wt	Thread	Length	
Perforations	5891' - 6046'	Tubing Subs		Length	
		Seating Nipple		Length	
		Top of tbg to KB			
		Bottom of Tubing/Production String Landed at:			
SPF:	1 spf	Rods	Size		
		Rods	Size		
		Pony subs			
		Pump			
		Packer Depth			
		Type			
		How set			

WORKOVER AND COMPLETION REPORT

Operator: Calpine Natural Gas	Well Name: Roosevelt #1
Date: 6-Nov-02	Report #: 1
Field: Basin DakotaMV SWD	Location: 22/30N/14W
County: San Juan	State: NM
Contractor: JC Well Service	Supervisor: Paul Thompson

Work Summary:

Move on location and rig up JC Well Service. Blew well down. ND wellhead and NU BOP. Pulled the donut and loaded the hole with 80 bbls of City water. Circulated the hole clean with another 40 bbls. Picked up additional tubing from Walsh stock and tagged fill at 6010' KB. Pulled up to 5989' KB. Rigged up Halliburton. Established circulation and spotted a 50 sx (59 cu.ft.) of C1 "B" cement with 1/4#/sk celloflake across the Dakota perfs. Displaced cement with 19 bbls of water. TOH to 5111'. Established circulation with fresh water and cemented across the Gallup with 15 sx (18 cu.ft.) of C1 "B" cement. Displace cement with 17.5 bbls of water. Finished TOH. Recovered a total of 186 jts, SN and tail joint of 2-3/8", 4.7#, J-55, EUE tubing. Tubing appears to be in good shape. SI well overnight to WOC. Will run CBL and perforate the Point Lookout tomorrow.

Daily Costs:

Road & Location	
Rig Costs	\$2,050
Equipment Rental (BOP)	\$150
Logging & Perforating	
Stimulation solvent	
Testing	
Cementing	\$4,128
Completion Fluids (City water)	\$576
Contract Services	
Miscellaneous Supplies	
Engr. & Supervision	\$533
Slick line	
Other (csg. head)	

Tubulars	
Wellhead Equipment	
Subsurface Equipment	
Artificial Lift Equipment	
Sucker Rods	
Tanks	
Bailer	
Flowlines	
Installation/Labor	
Fittings, Valves, Etc..	
Meters, Lact, Etc..	
Electrical Equipment	

Total Daily Costs	\$7,437
Cumulative Costs	\$7,437

Well Record

TD: 6159	Run in well				
PBTD: 6096	Tubing	Joints	Grade		
Casing Size: 4-1/2", 11.6#	Wt	Thread	Length		
	Tubing Subs		Length		
	Seating Nipple		Length		
Perforations 5891' - 6046'	Top of tbg to KB				
	Bottom of Tubing/Production String Landed at:				
SPF: 1 spf	Rods	Size			
	Rods	Size			
Pulled from well	Pony subs				
Tubing 187 jts 2-3/8", 4.7#, EUE & SN	Pump				
Packer	Packer Depth				
Rods	Type				
Pump	How set				