

UNITED STATES
DEPARTMENT OF THE INTERIOR
BUREAU OF LAND MANAGEMENT

RCVD MAY16'07
OIL CONS. DIV.
DIST. 3

Sundry Notices and Reports on Wells

2007 MAY -9 PM 3:06

GAS

RECEIVED
BLM
210 FARMINGTON NM

2. Name of Operator

BURLINGTON

RESOURCES OIL & GAS COMPANY LP

3. Address & Phone No. of Operator

PO Box 4289, Farmington, NM 87499 (505) 326-9700

4. Location of Well, Footage, Sec., T, R, M

Unit E (SWNW), 2305' FNL & 795' FWL, Sec. 15, T32N, R7W, NMPM

5. Lease Number
NMSF-078459-B
Tribe Name

7. Unit Agreement Name

8. Allison Unit
Well Name & Number

9. Allison Unit #16M
API Well No.

30-045-34077

10. Field and Pool

Blanco MV / Basin DK

11. County and State
San Juan Co., NM

12. CHECK APPROPRIATE BOX TO INDICATE NATURE OF NOTICE, REPORT, OTHER DATA

Type of Submission

Type of Action

☒ Notice of Intent☐ Abandonment☐ Change of Plans☒ Other - Pad rotation☐ Subsequent Report☐ Recompletion☐ New Construction☐ Subsequent Report☐ Plugging☐ Non-Routine Fracturing☐ Final Abandonment☐ Casing Repair☐ Water Shut off☐ Altering Casing☐ Conversion to Injection

13. Describe Proposed or Completed Operations

Per conversation with Bart Dodson 5/2/07, we are rotating the reserve pit 180° and have an uphill pit. This was done to avoid the BLM having to grant a temporary use area and also avoid cutting down some trees. The rotation caused the footages to change slightly. The new footages are 2305' FNL & 795' FWL, and the old footages were 2280' FNL & 775' FWL.

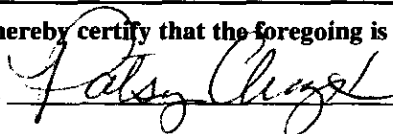
Attached are the new plat, cut & fill and topo map for this well. Please make the noted change in your records.

Verbal approval was given by Bart Dodson and Lindsey Eoff.

BP 5/10/07 & E 5/16/07

14. I hereby certify that the foregoing is true and correct.

Signed



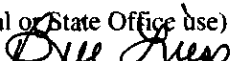
Patsy Clugston

Title Sr. Regulatory Specialist

Date 5/4/07

(This space for Federal or State Office use)

APPROVED BY



Title EPTL

Date 5/14/07

CONDITION OF APPROVAL, if any:

Title 18 U.S.C. Section 1001, makes it a crime for any person knowingly and willfully to make any department or agency of the United States any false, fictitious or fraudulent statements or representations as to any matter within its jurisdiction

NMOCD

District I
1625 N. French Dr., Hobbs, NM 88240

District II
1301 W. Grand Avenue, Artesia, NM 88210

District III
1000 Rio Brazos Rd., Aztec, NM 87410

District IV
1220 S. St. Francis Dr., Santa Fe, NM 87505

State of New Mexico
Energy, Minerals & Natural Resources Department

OIL CONSERVATION DIVISION
1220 South St. Francis Dr.
Santa Fe, NM 87505

Form C-102
Revised October 12, 2005
Instructions on back
Submit to Appropriate District Office
State Lease - 4 Copies
Fee Lease - 3 Copies

2007 MAY -9 PM 3:06
☒ AMENDED REPORT

WELL LOCATION AND ACREAGE DEDICATION PLAT

*API Number 30-045-34077		*Pool Code 72319 / 71599		210 *Pool Name BLANCO MESAVERDE / BASIN DAKOTA	
*Property Code 6784		*Property Name ALLISON UNIT			*Well Number 16M
*OGRID No. 14538		*Operator Name BURLINGTON RESOURCES OIL & GAS COMPANY, LP			*Elevation 6590'

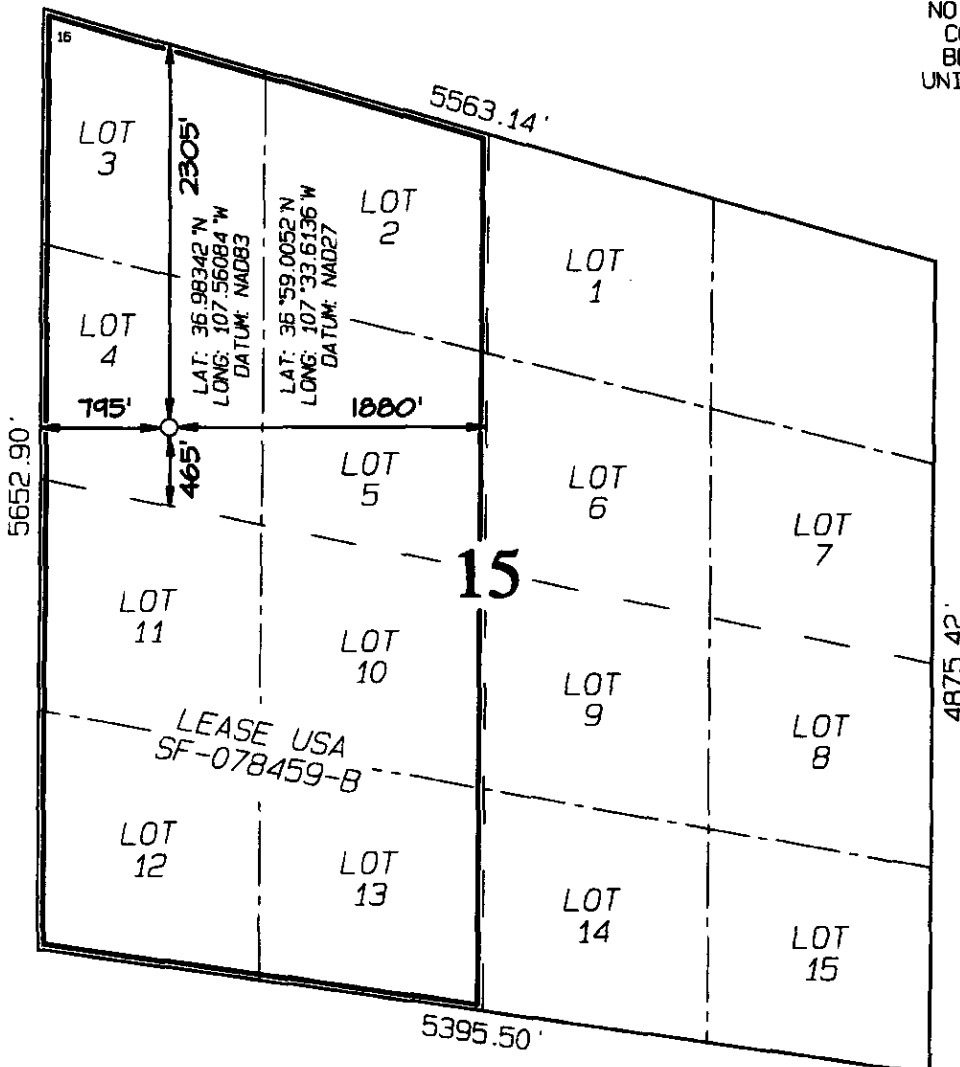
10 Surface Location

UL or lot no.	Section	Township	Range	Lot Idn	Feet from the	North/South line	Feet from the	East/West line	County
E	15	32N	7W		2305	NORTH	795	WEST	SAN JUAN

11 Bottom Hole Location If Different From Surface

UL or lot no.	Section	Township	Range	Lot Idn	Feet from the	North/South line	Feet from the	East/West line	County
12 Dedicated Acres 335.36 Acres - (W/2)					13 Joint or Infill		14 Consolidation Code		15 Order No. RCUD MAY16'07 OIL CONS. DIV.

NO ALLOWABLE WILL BE DISTURBED TO THIS
COMPLETION UNTIL ALL INTERESTS HAVE
BEEN CONSOLIDATED OR A NON-STANDARD
UNIT HAS BEEN APPROVED BY THE DIVISION



17 OPERATOR CERTIFICATION

I hereby certify that the information contained herein is true and complete to the best of my knowledge and belief, and that this organization either owns a working interest or unleased mineral interest in the land including the proposed bottom-hole location or has a right to drill this well at this location pursuant to a contract with an owner of such a mineral or working interest, or to a voluntary pooling agreement or a compulsory pooling order heretofore entered by the division.

Patsy Clugston
Signature Date
Patsy Clugston 5/4/07
Printed Name

18 SURVEYOR CERTIFICATION

I hereby certify that the well location shown on this plat was plotted from field notes of actual surveys made by me or under my supervision, and that the same is true and correct to the best of my belief.

Date of Survey: MAY 3, 2007
Signature and Seal of Professional Surveyor

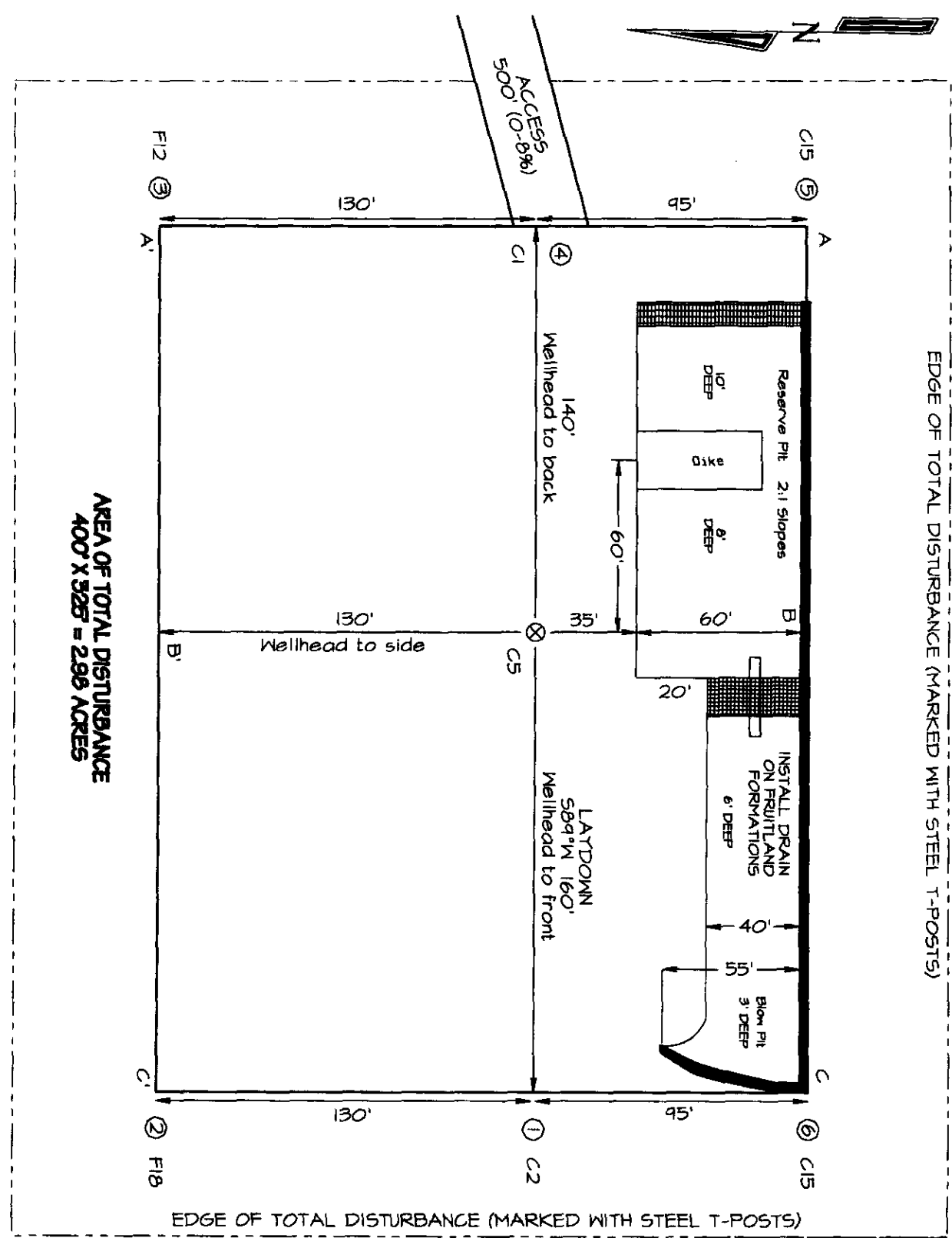


JASON C. EDWARDS
Certificate Number 15269

BURLINGTON RESOURCES OIL & GAS COMPANY ALLISON UNIT #16M
2305' FNL & 795' FWL, SECTION 15, T32N, R7W, NMPM
SAN JUAN COUNTY, NEW MEXICO ELEVATION: 6590'

EDGE OF TOTAL DISTURBANCE (MARKED WITH STEEL T-POSTS)

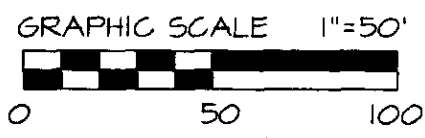
AREA OF TOTAL DISTURBANCE
 400' X 525' = 2.08 ACRES



~ SURFACE OWNER ~

Bureau of Land Management

LATITUDE: 36°59.0062N
LONGITUDE: 107°35.6136W
 DATUM: NAD1927



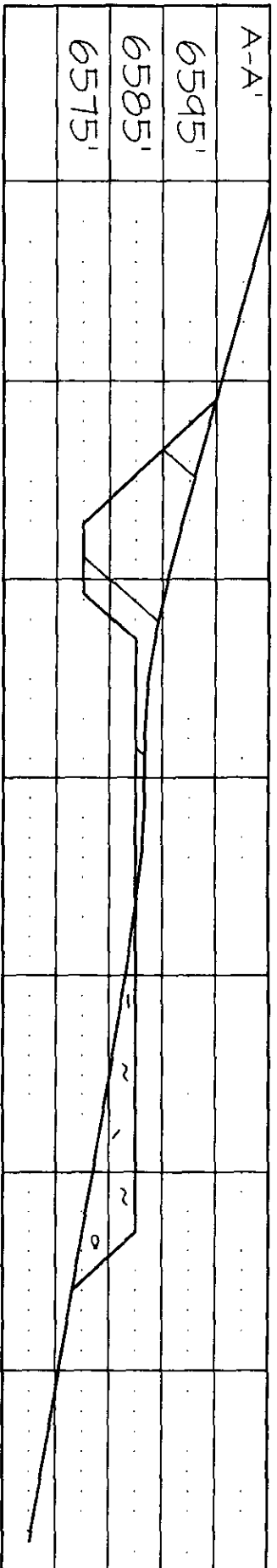
NCE SURVEYS IS NOT LIABLE FOR LOCATION OF UNDERGROUND UTILITIES OR PIPELINES.
 CONTRACTOR SHOULD CONTACT ONE-CALL FOR LOCATION OF ANY MARKED OR UNMARKED UNDERGROUND UTILITIES OR PIPELINES ON WELLPAD AND/OR ACCESS ROAD AT LEAST TWO WORKING DAYS PRIOR TO CONSTRUCTION.

BURLINGTON RESOURCES OIL & GAS COMPANY ALLISON UNIT #16M 2305' FNL & 795' FWL, SECTION 15, T32N, R7W, NMPM SAN JUAN COUNTY, NEW MEXICO ELEVATION: 6590'

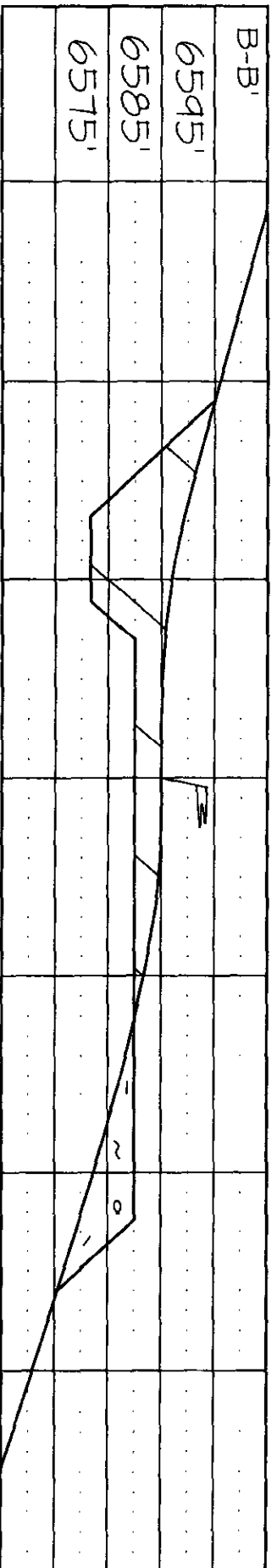
HORIZONTAL SCALE 1"=40'

C/L

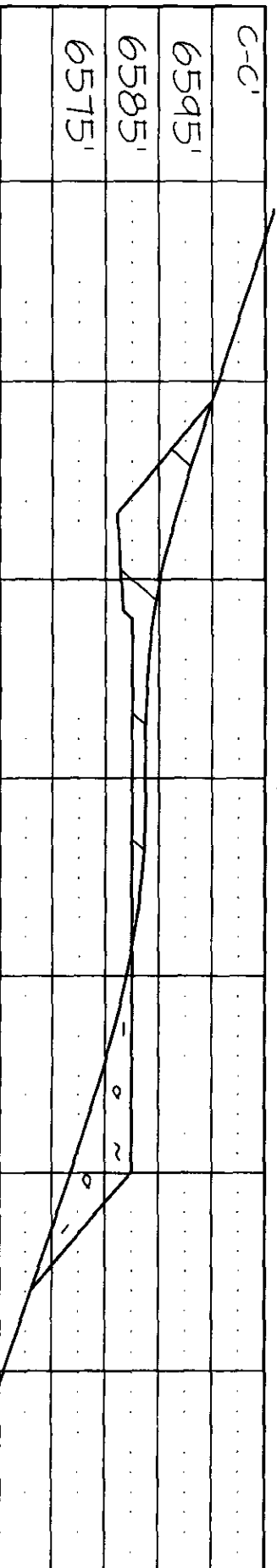
VERTICAL SCALE 1"=30'



C/L



C/L



NCE SURVEYS IS NOT LIABLE FOR LOCATION OF UNDERGROUND UTILITIES OR PIPELINES.

CONTRACTOR SHOULD CONTACT ONE-CALL FOR LOCATION OF ANY MARKED OR UNMARKED UNDERGROUND UTILITIES OR PIPELINES ON WELLPAD AND/OR ACCESS ROAD AT LEAST TWO WORKING DAYS PRIOR TO CONSTRUCTION.