

**UNITED STATES  
DEPARTMENT OF THE INTERIOR  
BUREAU OF LAND MANAGEMENT**

Sundry Notices and Reports on Wells

2007 JUN -7 AM 4:07

RECEIVED Lease Number

NMSF-079037

210 EAST 10TH ST  
6. If Indian, All. or  
Tribe Name

## 1. Type of Well

GAS

## 7. Unit Agreement Name

## 2. Name of Operator

*Burlington Resources Oil & Gas, LP*

## 3. Address &amp; Phone No. of Operator

PO Box 4289, Farmington, NM 87499 (505) 326-9700

## 8. Well Name &amp; Number

Hale #2C

## 9. API Well No.

30-045-30837

## 4. Location of Well, Footage, Sec., T, R, M

## 10. Field and Pool

Blanco MV / Basin DK

*Unit N (SESW), 1275' FSL & 1970' FWL, Sec. 27, T31N, R8W, NMPM*11. County and State  
San Juan, NM

## 12. CHECK APPROPRIATE BOX TO INDICATE NATURE OF NOTICE, REPORT, OTHER DATA

## Type of Submission

☒ Notice of Intent☐ Subsequent Report☐ Final Abandonment

## Type of Action

☐ Abandonment☐ Recompletion☐ Plugging☐ Casing Repair☐ Altering Casing☐ Change of Plans☐ New Construction☐ Non-Routine Fracturing☐ Water Shut off☐ Conversion to Injection☒ Other - Commingle

## 13. Describe Proposed or Completed Operations

See the attached procedure Burlington will be using to commingle the MV & DK production from this well. The work will not be conducted until the DHC application has been submitted and approved.

RCVD JUN14'07

OIL CONS. DIV.

DIST. 3

SEE ATTACHED FOR  
CONDITIONS OF APPROVAL

## 14. I hereby certify that the foregoing is true and correct.

Signed *Patsy Clugston* Patsy Clugston Title Sr. Regulatory Specialist Date 6/7/07

(This space for Federal or State Office use)

APPROVED BY *Petr. Eng.* Title *Petr. Eng.* Date 6/13/07

CONDITION OF APPROVAL, if any:

Title 18 U.S.C. Section 1001, makes it a crime for any person knowingly and willfully to make any department or agency of the United States any false, fictitious or fraudulent statements or representations as to any matter within its jurisdiction.

NMOCB

**Hale 2C**  
**Commingle, repair a hole in tubing, and clean out fill if needed.**

Township 31N Range 8W  
Section 27 1,275 FSL & 1,970 FWL  
SAN JUAN COUNTY, NM  
Latitude N36 51.9 Longitude W107 39.9

PBTD: 7825'

KB: 12'

**Procedure**

1. Hold safety meeting. Comply with all NMOCD, BLM, and ConocoPhillips safety and environmental regulations. Test rig anchors prior to moving in rig.
2. MIRU. Check casing and tubing pressures and record in Wellview. RU blow lines from casing valves and begin blowing down casing pressure. Kill well with 2% KCL if necessary. Kill water should be treated for SRB's with chlorine additive. ND wellhead NU BOP.
3. Release tubing hanger and TOOH with tubing. Tubing landed @ 5614', PBTD is @ 7,825' (CIBP @ 7450').
4. TOOH with tubing (detail below).
  - 179 - 2-3/8", 4.7#, J-55, 8rd EUE, TUBING
  - 1 - 2-3/8" x 2' TUBING SUB
  - 1 - 2-3/8", 4.7#, J-55, 8rd EUE, TUBING
  - 1 - 2-3/8" (1.78 ID) SEATING NIPPLE
  - 1 - 2-3/8" NOTCHED COLLAR
5. Visually inspect tubing, record findings in Wellview, make note of corrosion and/or scale and contact engineer with details if necessary. Slickline run on 4/25/07 indicated a hole in the tubing. (See slick line report below.) Please replace any damaged tubing as needed.
6. Pick up 3-3/4" bit and drill out CIBP @ 7,450'. Continue in with bit cleaning out fill to PBTD @ 7,825'.
7. TIH with tubing (detail below). Broach & pressure test tubing to 1000 psi while tripping back in the hole. Recommended landing depth is 7,575'.
  - 1 - 2-3/8" MULE SHOE/EXPENDABLE CHECK/F-NIPPLE (1.78" ID)
  - 1 - 2-3/8", 4.7#, J-55, 8rd EUE TUBING
  - 1 - 2-3/8" X 2' TUBING SUB
  - ~244 - 2-3/8", 4.7#, J-55, 8rd EUE TUBING
9. ND BOP. NU wellhead. Make swab run if necessary to kick off well. Notify lease operator that well is ready to be returned to production. RDMO.

BAE Engineer      Allan Rambur  
Office              (505) 324-5163  
Cell                (505) 320-1402

Foreman            Bruce Voiles  
Office              (505) 324-5121  
Cell                (505) 320-2448

Rig Superintendent      Lyle Ehrlich  
Office                      (505) 599-4002  
Cell                        (505) 320-2613

Lease Operator          Jeff Sandoval  
Mobile                    (505) 320-2633  
Pager                     (505) 949-9125

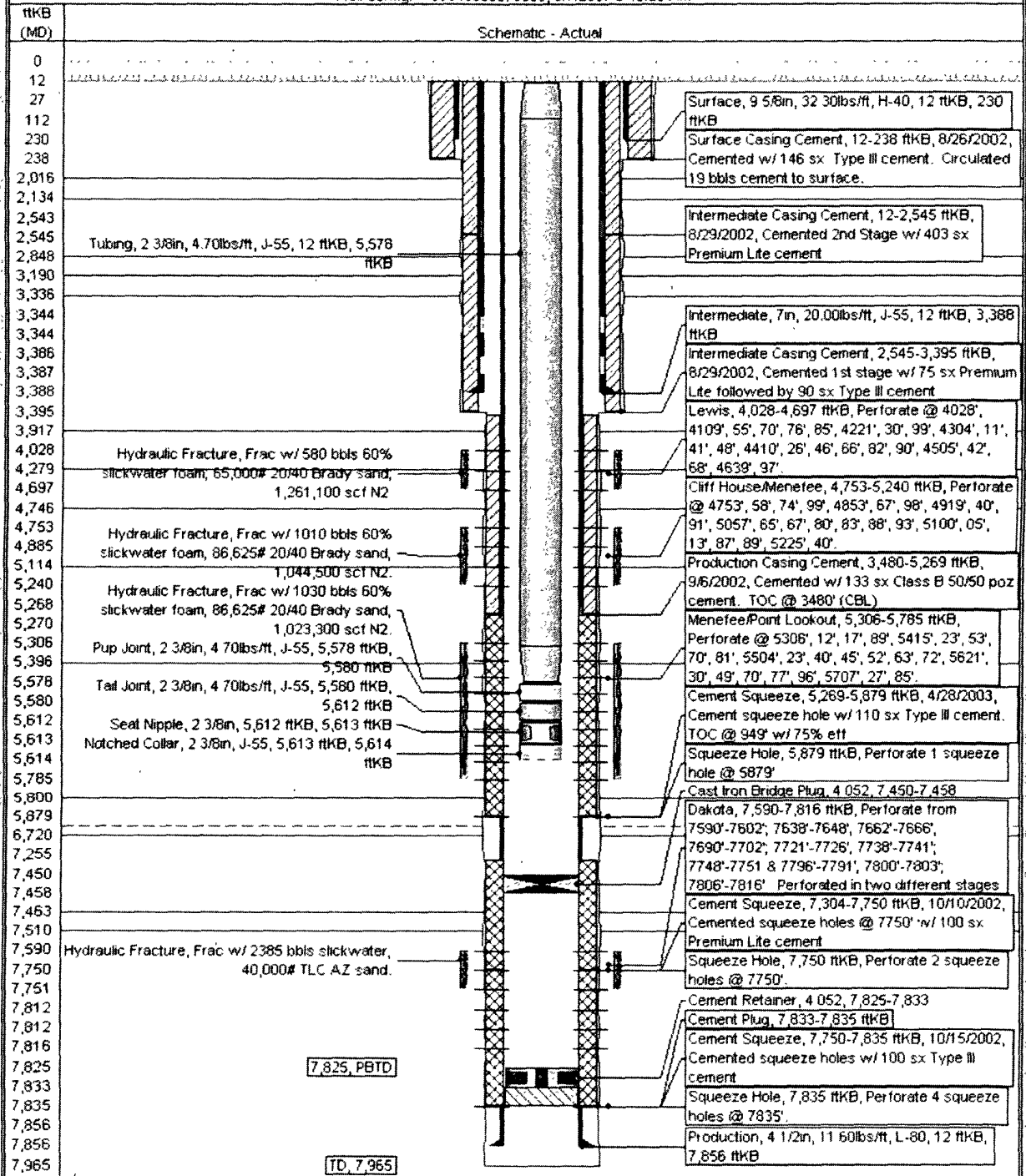
## CURRENT SCHEMATIC

ConocoPhillips

HALE #2C

District	Field Name	API / UWI	County	State/Province	Edn
6	BASIN DAKOTA (PRORATED GAS)	3004530837	SAN JUAN	NEW MEXICO	
Original Spud Date	Surface Legal Location	E/W Dist (ft)	E/W Ref	N/S Dist (ft)	N/S Ref
8/25/2002	NMPM,027-031N-008W	1,970 00	W	1,275 00	S

Well Config. - 30045308370000, 5/7/2007 8 40.20 AM



## **BLM CONDITIONS OF APPROVAL**

### ***CASING REPAIR OPERATIONS:***

- 1. A properly functioning BOP and related equipment must be installed prior to commencing worker and/or recompletion operations.**
- 2. If this well is in a Seasonal Closure Area or a Specially Designated Area, adhere to the closure requirements and special conditions.**

### ***SURFACE USE OPERATIONS:***

The following Stipulations will apply to this well unless a particular Surface Managing Agency or private surface owner has supplied to BLM and operator a contradictory environmental stipulation. The failure of operator to comply with these requirements may result in assessments or penalties pursuant to 43 CFR 3163.1 or 3163.2. A copy of these conditions of approval shall be present on location during construction, drilling and reclamation activity.

An agreement between operator and fee landowner will take precedence over BLM surface stipulations unless (in reference to 43 CFR Part 3160) 1) BLM determines that operator's actions will affect adjacent Federal or Indian surface, or 2) operator does not maintain well area and lease premises in a workmanlike manner with due regard for safety, conservation and appearance, or 3) no such agreement exists, or 4) in the event of well abandonment, minimal Federal restoration requirements will be required.

***STANDARD STIPULATIONS:*** All surface areas disturbed during work-over activities and not in use for production activities will be reseeded. This should occur in the first 90 days after completion of work-over activities.

### ***SPECIAL STIPULATIONS:***

- 1. Pits will be fenced during work-over operation.**
- 2. All disturbance will be kept on existing pad.**
- 3. All pits will be pulled and closed immediately upon completion of the work-over activities.**
- 4. Pits will be lined with an impervious material at least 12 mils thick.**