

UNITED STATES  
DEPARTMENT OF THE INTERIOR  
BUREAU OF LAND MANAGEMENT

SUNDRY NOTICES AND REPORTS ON WELLS

Do not use this form for proposals to drill or reenter an abandoned well. Use Form 3160-3 (APD) for such proposals.

FORM APPROVED  
OMB No 1004-0135  
Expires July 31, 1996

5. Lease Serial No.

SF-078362

6. If Indian, Allottee or Tribe Name

7. If Unit or CA/Agreement, Name and/or N

SUBMIT IN TRIPLICATE - Other instructions on reverse side

1. Type of Well

☒ Oil Well ☐ Gas Well ☐ Other

210 FARMINGTON NM

2. Name of Operator

Elm Ridge Exploration Company, LLC

3a. Address

PO BOX 156, Bloomfield, NM 87413

3b. Phone No. (include area code)

505-632-3476

4. Location of Well (Footage, Sec., T., R., M., or Survey Description)

Sec. 1-T23N-R7W

640' FSL X 2005' FWL

8. Well Name and No.

Marcus #7

9. API Well No.

30-039-24035

10. Field and Pool, or Exploratory Area

Lybrook Gallup

11. County or Parish, State

Rio Arriba, NM

12. CHECK APPROPRIATE BOX(ES) TO INDICATE NATURE OF NOTICE, REPORT, OR OTHER DATA

TYPE OF SUBMISSION	TYPE OF ACTION
<input checked="" type="checkbox"/> Notice of Intent	<input type="checkbox"/> Acidize <input type="checkbox"/> Deepen <input type="checkbox"/> Production (Start/Resume) <input type="checkbox"/> Water Shut-Off
<input type="checkbox"/> Subsequent Report	<input type="checkbox"/> Alter Casing <input type="checkbox"/> Fracture Treat <input type="checkbox"/> Reclamation <input type="checkbox"/> Well Integrity
<input type="checkbox"/> Final Abandonment Notice	<input type="checkbox"/> Casing Repair <input type="checkbox"/> New Construction <input type="checkbox"/> Recomplete <input type="checkbox"/> Other
	<input type="checkbox"/> Change Plans <input checked="" type="checkbox"/> Plug and Abandon <input type="checkbox"/> Temporarily Abandon
	<input type="checkbox"/> Convert to Injection <input type="checkbox"/> Plug Back <input type="checkbox"/> Water Disposal

13. Describe Proposed or Completed Operations (clearly state all pertinent details, including estimated starting date of any proposed work and approximate duration thereof. If the proposal is to deepen directionally or recompleat horizontally, give subsurface locations and measured and true vertical depths of all pertinent markers and zones. Attach the Bond under which the work will be performed or provide the Bond No. on file with BLM/BIA. Required subsequent reports shall be filed within 30 days following completion of the involved operations. If the operation results in a multiple completion or recompleat in a new interval, a Form 3160-4 shall be filed once Testing has been completed. Final Abandonment Notices shall be filed only after all requirements, including reclamation, have been completed, and the operator has determined that the site is ready for final inspection.)

Elm Ridge Exploration Company, LLC requests permission to plug and abandon this well according to the attached procedure.

RCVD JUL 23 '07

OIL CONS. DIV.

DIST. 3

14. I hereby certify that the foregoing is true and correct

Name (Printed/Typed)

Amy Mackey

Title

Production Assistant

Signature

Date

July 4, 2007

THIS SPACE FOR FEDERAL OR STATE USE

Approved by

Original Signed: Stephen Mason

Title

Date

JUL 19 2007

Conditions of approval, if any, are attached. Approval of this notice does not warrant or certify that the applicant holds legal or equitable title to those rights in the subject lease which would entitle the applicant to conduct operations thereon.

Office

Title 18 U.S.C. Section 1001, makes it a crime for any person knowingly and willfully to make to any department or agency of the United States any false, fictitious or fraudulent statements or representations as to any matter within its jurisdiction.

(Instructions on reverse)

NMOCD

## Plugging Program for Marcus #7:

Plug 1: TIH with 4-1/2" retainer on 2-3/8" tubing and set at 5425'. Squeeze below retainer with 10 sacks. Spot <sup>Cement</sup> 6 sacks on top of retainer to cover Gallup top. <sup>to 5152'</sup>  
Pull up and reverse circulate with 2 tubing volumes of water. <sup>+ 50' excess</sup>

Plug 2: Perforate 4 squeeze holes at 3010'. TIH with 4-1/2" cement retainer and set at 2960'. Squeeze below retainer with 28 sx and spot 6 sx plug on top of retainer to cover 100' across Cliff House top from 3010-2910', inside and outside. Pull up and reverse circulate with 2 tubing volumes of water.

Plug 3: Perforate 4 squeeze holes at 2568'. TIH with 4-1/2" cement retainer and set at 2518'. Squeeze below retainer with 28 sx and spot 6 sx plug on top of retainer to cover 100' across Chacra top from 2568-2468', inside and outside. Pull up and reverse circulate with 2 tubing volumes of water.

Plug 4: With end of tubing at <sup>2174'</sup> 2420', spot 79 sx balanced plug from <sup>2174' 1397'</sup> 2420-1472' to cover across Pictured Cliffs, Fruitland, Kirtland, and Ojo Alamo tops. Pull up and reverse circulate with 2 tubing volumes of water. TOOH with tubing.

Plug 5: Perf 4 holes at 303'. Tie onto 4-1/2" casing. Pump 90 sacks, or sufficient volume to bring cement to surface inside and outside 5-1/2" casing.

Remediate location according to NMOCD conditions of approval.

Note: All cement volumes include excess.

# Elm Ridge Resources

## Pertinent Data Sheet

**Well Name:** Marcus #7  
**Footage:** 640' FSL and 2005' FWL  
**Location:** Section 1, T23N, R7W  
**County:** Rio Arriba County, NM  
**API#:** 30-039-24035

**Field:** Lybrook Gallup

**Elevation:** 7034' KB

**TD:** 5790' KB  
**PBTD:** 5736' KB

**Completed:** 10/9/86

### Casing Record:

Hole Size	Casing Size	Wt.	Grade	Depth Set	Cement
12-1/4"	8-5/8"	24#	J-55	253'	295 ft <sup>3</sup> (Circ. To Surface)
7-7/8"	4-1/2"	10.5#	K-55	5789'	Stg 1: 576 ft <sup>3</sup> (TOC: 3583' Calc.) Stg 2: 574 ft <sup>3</sup> (TOC: 665' TS)

<sup>1</sup>DV Tool set at 2258'.

**Tubing Record:** No tubing in well (1/26/2006)

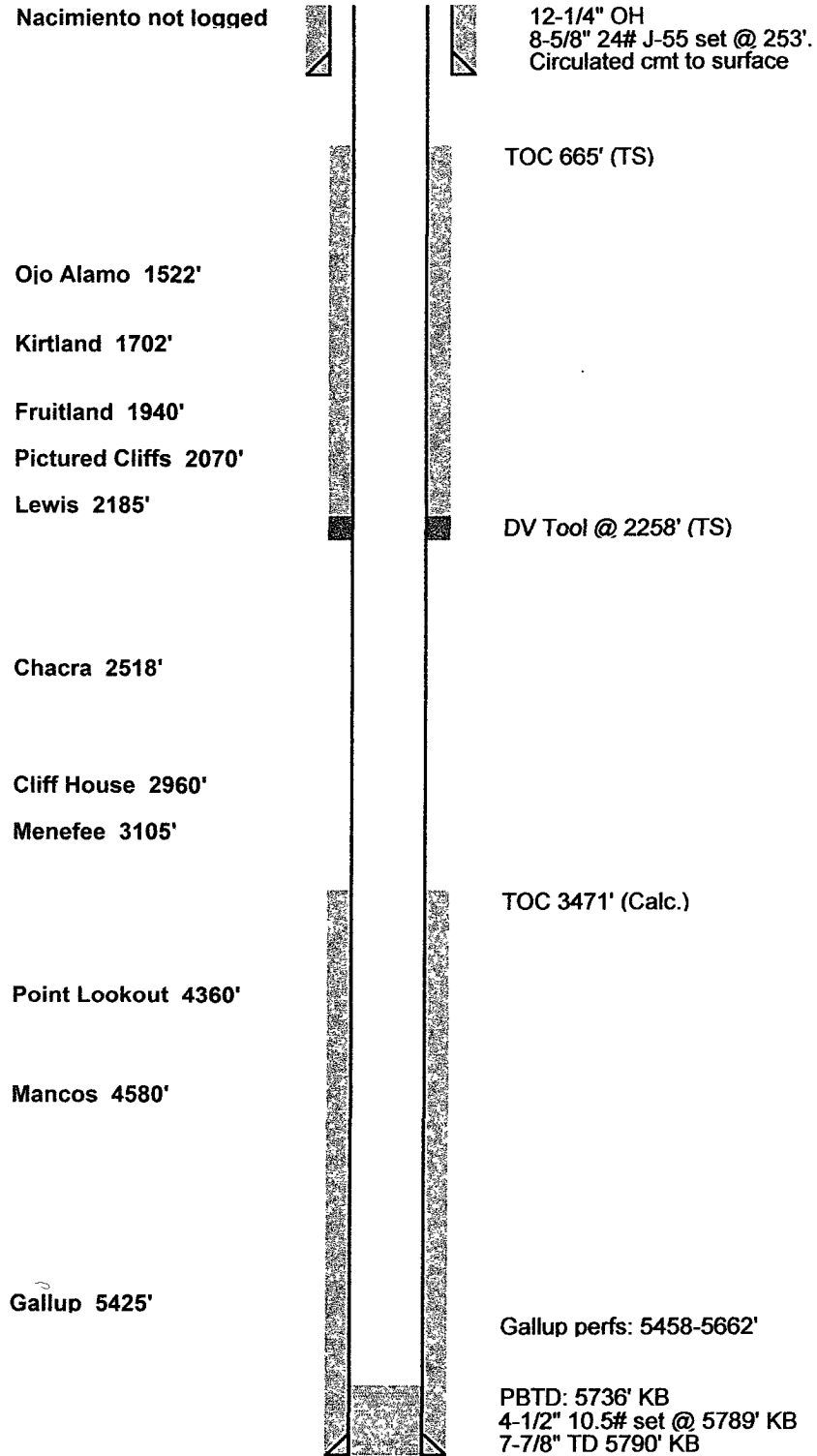
### Formation Tops:

San Jose	Surface
Nacimiento	Not Logged (behind surface casing)
Ojo Alamo	1522'
Kirtland	1702'
Fruitland	1940'
Pictured Cliffs	2070'
Lewis	2185'
Chacra	2518'
Cliff House	2960'
Menefee	3105'
Point Lookout	4360'
Mancos	4580'
Gallup	5425'

**Perforations:** Gallup: 5458-5662'

Wellbore Diagram  
 Marcus #7  
 SW/4 Sec. 1, T23N, R7W  
 Rio Arriba Co., NM  
 API #30-039-24035

Before



Marcus #7 WBD  
 7/4/2007

Wellbore Diagram  
 Marcus #7  
 SW/4 Sec. 1, T23N, R7W  
 Rio Arriba Co., NM  
 API #30-039-24035

After

Nacimiento not logged

12-1/4" OH  
 8-5/8" 24# J-55 set @ 253'.  
 Circulated cmt to surface

Plug 5: Perf 4 holes @ 303'.  
 Tie onto 5-1/2" casing. Pump 90 sx cement,  
 (or sufficient volume) to bring cement to surface  
 inside and outside 5-1/2" casing.

Ojo Alamo 1522'

Kirtland 1702'

Plug 4:  
 Spot 79 sx balanced plug from 2120-1472'.

Fruitland 1940'

Pictured Cliffs 2070'

Lewis 2185'

DV Tool @ 2258' (TS)

Chacra 2518'

Plug 3: Perf 4 holes @ 2568'.  
 Set retainer at 2518'. Sqz 28 sx below retainer.  
 Spot 6 sx on top of retainer.

Cliff House 2960'

Menefee 3105'

Plug 2: Perf 4 holes @ 3010'.  
 Set retainer at 2960'. Sqz 28 sx below retainer.  
 Spot 6 sx on top of retainer.

TOC 3471' (Calc.)

Point Lookout 4360'

Mancos 4580'

Gallup 5425'

Plug 1: Set retainer @ 5425'. Sqz below retainer  
 with 10 sx. Spot 6 sx on top of retainer.  
 Gallup perms: 5458-5662'

PBTD: 5736' KB  
 4-1/2" 10.5# set @ 5789' KB  
 7-7/8" TD 5790' KB

Marcus #7 WBD  
 7/4/2007

**UNITED STATES DEPARTMENT OF THE INTERIOR  
BUREAU OF LAND MANAGEMENT  
FARMINGTON DISTRICT OFFICE  
1235 LA PLATA HIGHWAY  
FARMINGTON, NEW MEXICO 87401**

Attachment to notice of  
Intention to Abandon:

Re: Permanent Abandonment  
Well: 7 Marcus

**CONDITIONS OF APPROVAL**

1. Plugging operations authorized are subject to the attached "General Requirements for Permanent Abandonment of Wells on Federal and Indian Lease."
2. Farmington Office is to be notified at least 24 hours before the plugging operations commence (505) 599-8907.
3. The following modifications to your plugging program are to be made:
  - a) Bring the top of the Gallup plug to 5152'
  - b) Place the Pictured Cliffs/Fruitland/Kirtland/Ojo Alamo plug from 2174' – 1397'.

You are also required to place cement excesses per 4.2 and 4.4 of the attached General Requirements.

Office Hours: 7:45 a.m. to 4:30 p.m.