

UNITED STATES  
DEPARTMENT OF THE INTERIOR  
BUREAU OF LAND MANAGEMENT

2007 JUL 25 PM 3:49

RECEIVED

SUNDRY NOTICES AND REPORTS ON WELLS

FORM APPROVED  
Budget Bureau No. 1004-0135  
Expires: March 31, 1993

Do not use this form for proposals to drill or to deepen or reentry to a different reservoir.  
Use "APPLICATION FOR PERMIT" for such proposals

5. Lease Designation and Serial No.  
Contract 167

6. If Indian, Allottee or Tribe Name  
Jicarilla Apache

7. If Unit or CA, Agreement Designation

*SUBMIT IN TRIPLICATE*

1. Type of Well

☒ Oil ☐ Gas ☐ Other

2. Name of Operator

Roddy Production Company, Inc.

3. Address and Telephone No.

P.O. Box 2221, Farmington NM 87499 (505) 325-5750

4. Location of Well (Footage, Sec., T., R., M., or Survey Description)

Surface location: 1850' FNL x 1850' FEL, Section 11, T23N, R3W

8. Well Name and No.

Amerada Jicarilla 4

9. API Well No.

30-039-22585

10. Field and Pool, or Exploratory Area

West Lindrith Gallup-Dakota

11. County or Parish, State

Rio Arriba County, New Mexico

12. CHECK APPROPRIATE BOX(S) TO INDICATE NATURE OF NOTICE, REPORT, OR OTHER DATA

TYPE OF SUBMISSION

TYPE OF ACTION

☒ Notice of Intent

☐ Subsequent Report

☐ Final Abandonment Notice

☒ Abandonment

☐ Recompletion

☐ Plugging Back

☐ Casing Repair

☐ Altering Casing

☐ Other

☐ Change of Plans

☐ New Construction

☐ Non-Routine Fracturing

☐ Water Shut-Off

☐ Conversion to Injection

☐ Dispose Water

(Note: Report results of multiple completion on Well Completion or Recompletion Report and Log form.)

13. Describe Proposed or Completed Operations (Clearly state all pertinent details, and give pertinent dates, including estimated date of starting any proposed work. If well is directionally drilled, give subsurface locations and measured and true vertical depth for all markers and zones pertinent to this work.)\*

Roddy Production Company, Inc. proposes to P&A the above described well as per the attached procedure. This work is scheduled to begin 8/1/07.

RCVD JUL 31 '07

OIL CONS. DIV.

DIST. 3

14. I hereby certify that the foregoing is true and correct

Signed

Robert R. Griffiee

Title Operations Manager

Date: 7/24/07

(This space for Federal or State office use)

Approved by Original Signed: Stephen Mason

Title

Date

JUL 30 2007

Conditions of approval, if any:

Title 18 U.S.C. Section 1001, makes it a crime for any person knowingly and willfully to make to any department or agency of the United States any false, fictitious or fraudulent statements or representations as to any matter within its jurisdiction.

\*See Instruction on Reverse Side

NMOC

Amerada Jicarilla 4  
P&A Procedure

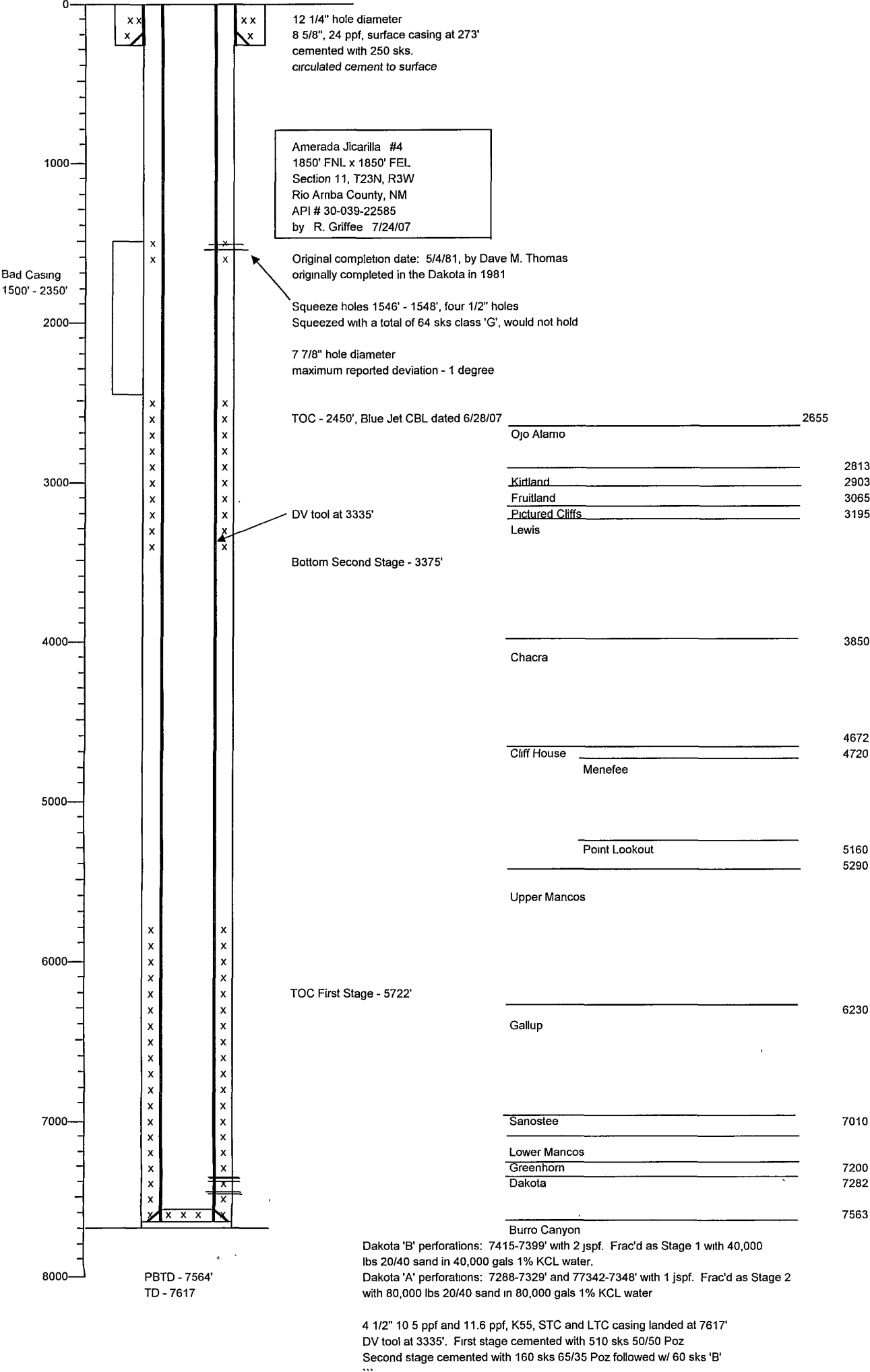
Prepared by: R. Griffiee  
7/24/07

While attempting to return this well to producing status, it was discovered that the well had developed a casing leak from 1534' – 1549'. Two subsequent squeeze cementing operations failed to repair the casing. A casing inspection log showed potentially bad casing from 1500' to 2350'. A CBL log was also run to help evaluate the potential for casing repair. After making an attempt to repair the well, it is decided that repair will not be economically feasible and Roddy Production desires to P&A the well.

See attached well bore diagram

1. Set Plug #1(Dakota), 100' cement plug, inside casing from 7232' – 7332'. Cement is in place outside the casing. The plug volume will be 20 sks class 'G' neat (1.16 cf/sk, 15.8 ppg).
2. Set Plug #2 (Gallup), 100' cement plug, inside casing from 6180' – 6280'. Cement is in place outside the casing. The plug volume will be 20 sks class 'G' neat (1.16 cf/sk, 15.8 ppg).
3. Set Plug #3 (MesaVerde). Install cement plug inside and outside the casing from 4622' – 4722'. The plug volume will be 70 sks class 'G' neat (1.16 cf/sk, 15.8 ppg).
4. Set Plug #4 (Chacra/Lewis). Install cement plug inside the casing from 3145' – 3245'. Cement is in place outside the casing. The plug volume will be 20 sks class 'G' neat (1.16 cf/sk, 15.8 ppg).
5. Set Plug #5 (Pictured Cliffs/Fruitland Coal), 262' cement plug, inside casing from 2736' – 2551'. Cement is in place outside the casing. The plug volume will be 35 sks class 'G' neat (1.16 cf/sk, 15.8 ppg).
6. Set Plug #6 (Ojo Alamo), 100' cement plug, inside casing from 2705' – 2605'. Cement is in place outside the casing. The plug volume will be 20 sks class 'G' neat (1.16 cf/sk, 15.8 ppg). Tag plug after setting.
7. Set Plug #7 (Nacimiento), 100' cement plug, inside and outside the casing from 1480' – 1380'. The plug volume will be 70 sks class 'G' neat (1.16 cf/sk, 15.8 ppg).
8. Set Plug #8 (Surface casing shoe to surface), 323' cement plug, inside casing from 323' – 0'. Cement should be in place outside the casing. The plug volume will be 50 sks class 'G' neat (1.16 cf/sk, 15.8 ppg).
9. Allow cement to cure.
10. Cut off well head and install dry-hole marker.
11. Close pit as per NMOCD requirements.
12. Reclaim location as per BLM specifications.

Elevations. 7211' GL, 7225' RKB



The Jicarilla Apache Nation requires 45 days to evaluate this well beginning from July 26, 2007 in order to determine if they would like to assume ownership of the well. If the Jicarilla Apache Nation has not contacted your office before the end of the 45 days you may proceed with plugging operations.

**UNITED STATES DEPARTMENT OF THE INTERIOR  
BUREAU OF LAND MANAGEMENT  
FARMINGTON DISTRICT OFFICE  
1235 LA PLATA HIGHWAY  
FARMINGTON, NEW MEXICO 87401**

Attachment to notice of  
Intention to Abandon:

Re: Permanent Abandonment  
Well: 4 Amerada Jicarilla

**CONDITIONS OF APPROVAL**

1. Plugging operations authorized are subject to the attached "General Requirements for Permanent Abandonment of Wells on Federal and Indian Lease."
2. Farmington Office is to be notified at least 24 hours before the plugging operations commence (505) 599-8907.
3. The following modifications to your plugging program are to be made:
  - a) Place the Gallup plug from 6250' – 6150'.
  - b) Place the Pictured Cliffs/Fruitland plug from 3115' - 2852'.
  - c) Place the Kirtland/Ojo Alamo plug from 2854' – 2606'.
  - d) Place the Nacimiento plug to 1480' – 1380' inside and outside the 4 ½" casing.

You are also required to place cement excesses per 4.2 and 4.4 of the attached General Requirements.

Office Hours: 7:45 a.m. to 4:30 p.m.