

## AS DRILLED

State of New Mexico

Form C-102

## District I

1625 N. French Dr., Hobbs, NM 88240

Energy, Minerals &amp; Natural Resources Department

Revised October 12, 2005

## District II

1301 W. Grand Avenue, Artesia, NM 88210

## OIL CONSERVATION DIVISION

Submit to Appropriate District Office

## District III

1000 Rio Brazos Rd., Aztec, NM 87410

1220 South St. Francis Dr.

State Lease - 4 Copies

## District IV

1220 S. St. Francis Dr., Santa Fe, NM 87505

Santa Fe, NM 87505

Fee Lease - 3 Copies

☒ AMENDED REPORT

## WELL LOCATION AND ACREAGE DEDICATION PLAT

API Number 30-039-27455		Pool Code 71629	Pool Name Basin Fruitland Coal
Property Code	Property Name Carracas Canyon 36A		Well Number #1R
OGRID No. 162928	Operator Name Energen Resources Corporation		Elevation 6975'

<sup>10</sup> Surface Location

UL or lot no.	Section	Township	Range	Lot Idn	Feet from the	North/South line	Feet from the	East/West line	County
A	36	32N	05W		365'	North	740'	East	Rio Arriba

<sup>11</sup> Bottom Hole Location If Different From Surface

UL or lot no.	Section	Township	Range	Lot Idn	Feet from the	North/South line	Feet from the	East/West line	County
H	36	32N	05W		2489'	South	1187'	East	Rio Arriba

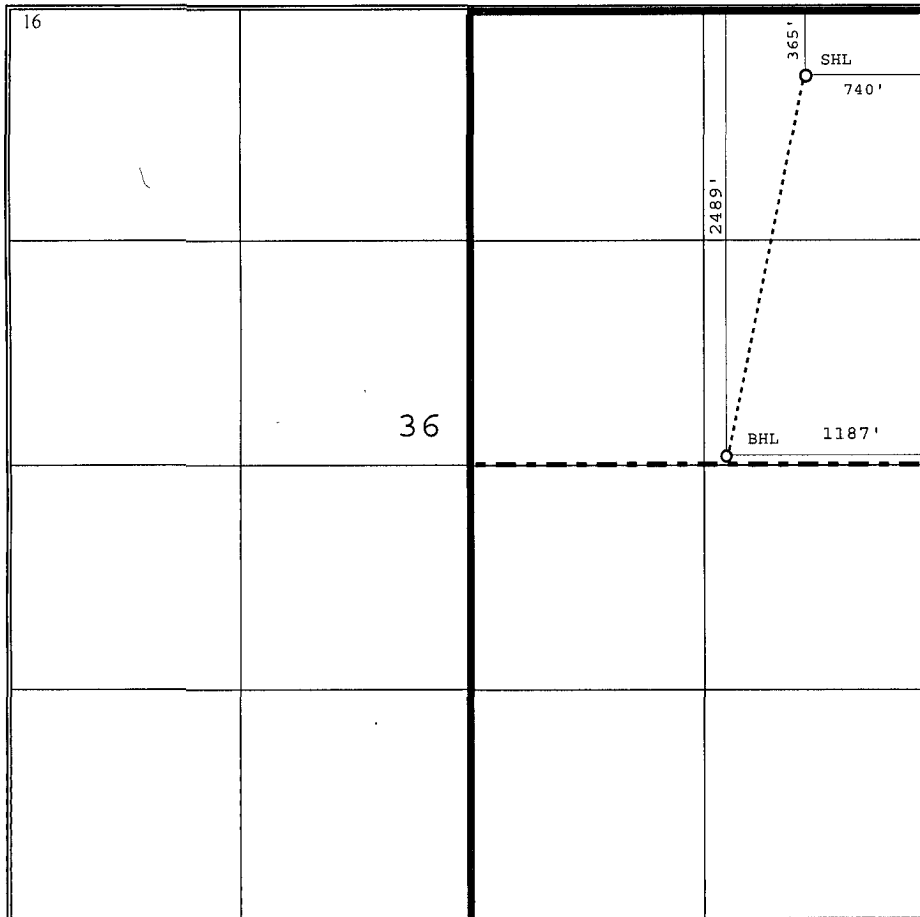
Dedicated Acres	Joint or Infill	Consolidation Code	Order No.
320.00 E/2			

RCVD AUG 15 '07  
OIL CONS. DIV.  
DIST. 3

No allowable will be assigned to this completion until all interests have been consolidated or a non-standard unit has been approved by the division.

2640.0

2640.00

<sup>17</sup> OPERATOR CERTIFICATION

I hereby certify that the information contained herein is true and complete to the best of my knowledge and belief, and that this organization either owns a working interest or unleased mineral interest in the land including the proposed bottom hole location or has a right to drill this well at this location pursuant to a contract with an owner of such a mineral or working interest or to a voluntary pooling agreement or a compulsory pooling order heretofore entered by the division

*Nathan Smith* 8/14/2007  
Signature Date

Nathan Smith

Printed Name

<sup>18</sup> SURVEYOR CERTIFICATION

I hereby certify that the well location shown on this plat was plotted from field notes of actual surveys made by me or under my supervision, and that the same is true and correct to the best of my belief.

April 17, 2003

Date of Survey

Signature and Seal of Professional Surveyor

Original survey conducted and  
recorded by Jason C. Edwards

15269

Certificate Number

R