

UNITED STATES
DEPARTMENT OF THE INTERIOR
BUREAU OF LAND MANAGEMENT

APPLICATION FOR PERMIT TO DRILL, DEEPEN, OR PLUG BACK

2006 DEC 13 PM 2:00

RECEIVED
070 FARMINGTON NM

1a. Type of Work DRILL	5. Lease Number SF-078214 Unit Reporting Number
1b. Type of Well GAS	6. If Indian, All. or Tribe
2. Operator BURLINGTON RESOURCES Oil & Gas Company, LP	7. Unit Agreement Name
3. Address & Phone No. of Operator PO Box 4289, Farmington, NM 87499 (505) 326-9700	8. Farm or Lease Name McCord 9. Well Number #100
4. Location of Well Unit B (NWNE), 840' FNL & 1730' FEL, Latitude 36° 48.2190 N Longitude 108° 12.4157 W	10. Field, Pool, Wildcat Basin FC/Fulcher Kutz PC 11. Sec., Twn, Rge, Mer. (NMPM) Sec. 21, T30N, R13W API # 30-045- 34111
14. Distance in Miles from Nearest Town 6 miles/Farmington	12. County San Juan 13. State NM
15. Distance from Proposed Location to Nearest Property or Lease Line 840'	
16. Acres in Lease	17. Acres Assigned to Well E/2 320 FC - NE/4 160 PC
18. Distance from Proposed Location to Nearest Well, Drlg, Compl, or Applied for on this Lease 50'	
19. Proposed Depth 1601'	20. Rotary or Cable Tools Rotary
21. Elevations (DF, FT, GR, Etc.) 5452' GL	22. Approx. Date Work will Start RCVD AUG 10 '07 OIL CONS. DIV. DIST. 3
23. Proposed Casing and Cementing Program See Operations Plan attached	
24. Authorized by: <u>Rhonda Rogers</u> Rhonda Rogers (Regulatory Technician)	12-13-06 Date

PERMIT NO.

APPROVED BY

APPROVAL DATE

TITLE

DATE

Archaeological Report attached

Threatened and Endangered Species Report attached

NOTE: This format is issued in lieu of U.S. BLM Form 3160-3

Title 18 U.S.C. Section 1001, makes it a crime for any person knowingly and willfully to make to any department or agency of the United States any false, fictitious or fraudulent statements or presentations as to any matter within its jurisdiction.

DRILLING OPERATIONS AUTHORIZED ARE
SUBJECT TO COMPLIANCE WITH ATTACHED
"GENERAL REQUIREMENTS".

NOTIFY AZTEC OCD 24 HRS.
PRIOR TO CASING & CEMENT

This action is subject to technical and
procedural review pursuant to 43 CFR 3165.3
and appeal pursuant to 43 CFR 3165.4

District I
PO Box 1980, Hobbs, NM 88241-1980

District II
PO Drawer DD, Artesia, NM 88211-0719

District III
1000 Rio Brazos Rd., Aztec, NM 87410

District IV
PO Box 2088, Santa Fe, NM 87504-2088

State of New Mexico
Energy, Minerals & Natural Resources Department

OIL CONSERVATION DIVISION
PO Box 2088
Santa Fe, NM 87504-2088

Form C-102
Revised February 21, 1994

Instructions on back
Submit to Appropriate District Office
State Lease - 4 Copies
Fee Lease - 3 Copies

2006 DEC 13 PM 2 30

☐ AMENDED REPORT

RECEIVED

070 EARIINGTON

WELL LOCATION AND ACREAGE DEDICATION PLAT

*API Number 30-045-34111		*Pool Code 71629/77200	*Pool Name Basin Fruitland Coal/Fulcher Kutz Pictured Cliffs
*Property Code 7300	*Property Name MCCORD		*Well Number 100
*OGRID No. 14538	*Operator Name BURLINGTON RESOURCES OIL & GAS COMPANY, LP		*Elevation 5452'


¹⁰ Surface Location

UL or lot no	Section	Township	Range	Lot Idn	Feet from the	North/South line	Feet from the	East/West line	County
B	21	30N	13W		840	NORTH	1730	EAST	SAN JUAN

¹¹ Bottom Hole Location If Different From Surface

UL or lot no.	Section	Township	Range	Lot Idn	Feet from the	North/South line	Feet from the	East/West line	County
¹² Dedicated Acres E/2 320-FTC NE/4 160 - PC					¹³ Joint or Infill		¹⁴ Consolidation Code		¹⁵ Order No.

NO ALLOWABLE WILL BE ASSIGNED TO THIS COMPLETION UNTIL ALL INTERESTS HAVE BEEN CONSOLIDATED OR A NON-STANDARD UNIT HAS BEEN APPROVED BY THE DIVISION

16	5186.94'	840'	LAT: 36°48.2190' N LONG: 108°12.4157' W DATUM: NAD27 1730'	865'	1800'	5229.84'	5224.56'	21	LEASE USA SF-078214	¹⁷ OPERATOR CERTIFICATION I hereby certify that the information contained herein is true and complete to the best of my knowledge and belief Signature <u>Joni Clark</u> Printed Name Joni Clark Title Regulatory Analyst 4-12-06 Date ¹⁸ SURVEYOR CERTIFICATION I hereby certify that the well location shown on this plat was plotted from field notes of actual surveys made by me or under my supervision, and that the same is true and correct to the best of my belief. Survey Date: FEBRUARY 8, 2006 Signature and Seal of Professional Surveyor  JASON C. EDWARDS Certificate Number 15269

Submit 3 Copies To Appropriate District Office

District I

1625 N. French Dr., Hobbs, NM 88240

District II

1301 W. Grand Ave., Artesia, NM 88210

District III

1000 Rio Brazos Rd., Aztec, NM 87410

District IV

1220 S. St. Francis Dr., Santa Fe, NM 87505

State of New Mexico

Energy, Minerals and Natural Resources

Form C-103

May 27, 2004

OIL CONSERVATION DIVISION

1220 South St. Francis Dr.

Santa Fe, NM 87505

WELL API NO.

30-045-

34111

5. Indicate Type of Lease

STATE ☐

FEE ☐

6. State Oil & Gas Lease No.

7. Lease Name or Unit Agreement Name

McCord

8. Well Number

#100

9. OGRID Number

14538

10. Pool name or Wildcat

Basin FC/Fulcher Kutz PC

SUNDRY NOTICES AND REPORTS ON WELLS
(DO NOT USE THIS FORM FOR PROPOSALS TO DRILL OR TO DEEPEN OR PLUG BACK TO A DIFFERENT RESERVOIR. USE "APPLICATION FOR PERMIT" (FORM C-101) FOR SUCH PROPOSALS.)

1. Type of Well:

Oil Well ☐

Gas Well ☒

Other

2. Name of Operator

BURLINGTON RESOURCES OIL & GAS COMPANY LP

3. Address of Operator

3401 E. 30TH STREET, FARMINGTON, NM 87402

4. Well Location

Unit Letter B : 840 feet from the North line and 1730 feet from the East line

Section 21 Township 30N Range 13W NMPM County San Juan

11. Elevation (Show whether DR, RKB, RT, GR, etc.)

5452'

Pit or Below-grade Tank Application

☐ or Closure ☐

Pit type New Drill

Depth to Groundwater

<100'

Distance from nearest fresh water well

>1000'

Distance from nearest surface water

<1000'

Pit Liner Thickness:

12

mil

Below-Grade Tank:

Volume

bbls;

Construction Material

12. Check Appropriate Box to Indicate Nature of Notice, Report or Other Data

NOTICE OF INTENTION TO:

PERFORM REMEDIAL WORK ☐

TEMPORARILY ABANDON ☐

PULL OR ALTER CASING ☐

PLUG AND ABANDON ☐

CHANGE PLANS ☐

MULTIPLE COMPL ☐

OTHER:

New Drill

☒

SUBSEQUENT REPORT OF:

REMEDIAL WORK ☐

COMMENCE DRILLING OPNS. ☐

CASING/CEMENT JOB ☐

ALTERING CASING ☐

P AND A ☐

OTHER: ☐

13. Describe proposed or completed operations. (Clearly state all pertinent details, and give pertinent dates, including estimated date of starting any proposed work). SEE RULE 1103. For Multiple Completions: Attach wellbore diagram of proposed completion or recompletion.

New Drill, Lined:

Burlington Resources proposes to construct a new drilling pit and an associated vent/flare pit. Based on Burlington's interpretation of the Ecosphere's risk ranking criteria, the new drilling pit will be a lined pit as detailed in Burlington's Revised Drilling / Workover Pit Construction / Operation Procedures dated November 11, 2004 on file at the NMOCD office. A portion of the vent/flare pit will be designed to manage fluids and that portion will be lined as per the risk ranking criteria. Burlington Resources anticipates closing these pits according to the Drilling / Workover Pit Closure Procedure dated August 2, 2004 on file at the NMOCD office

I hereby certify that the information above is true and complete to the best of my knowledge and belief. I further certify that any pit or below-grade tank has been/will be constructed or closed according to NMOCD guidelines ☐, a general permit ☒ or an (attached) alternative OCD-approved plan ☐.

SIGNATURE

Joni Clark

TITLE

Regulatory Analyst

DATE

4/13/2006

Type or print name

Joni Clark

E-mail address:

jclark@br-inc.com

Telephone No.

505-326-9701

For State Use Only

APPROVED BY

[Signature]

TITLE

Deputy Oil & Gas Inspector,

District #3

DATE

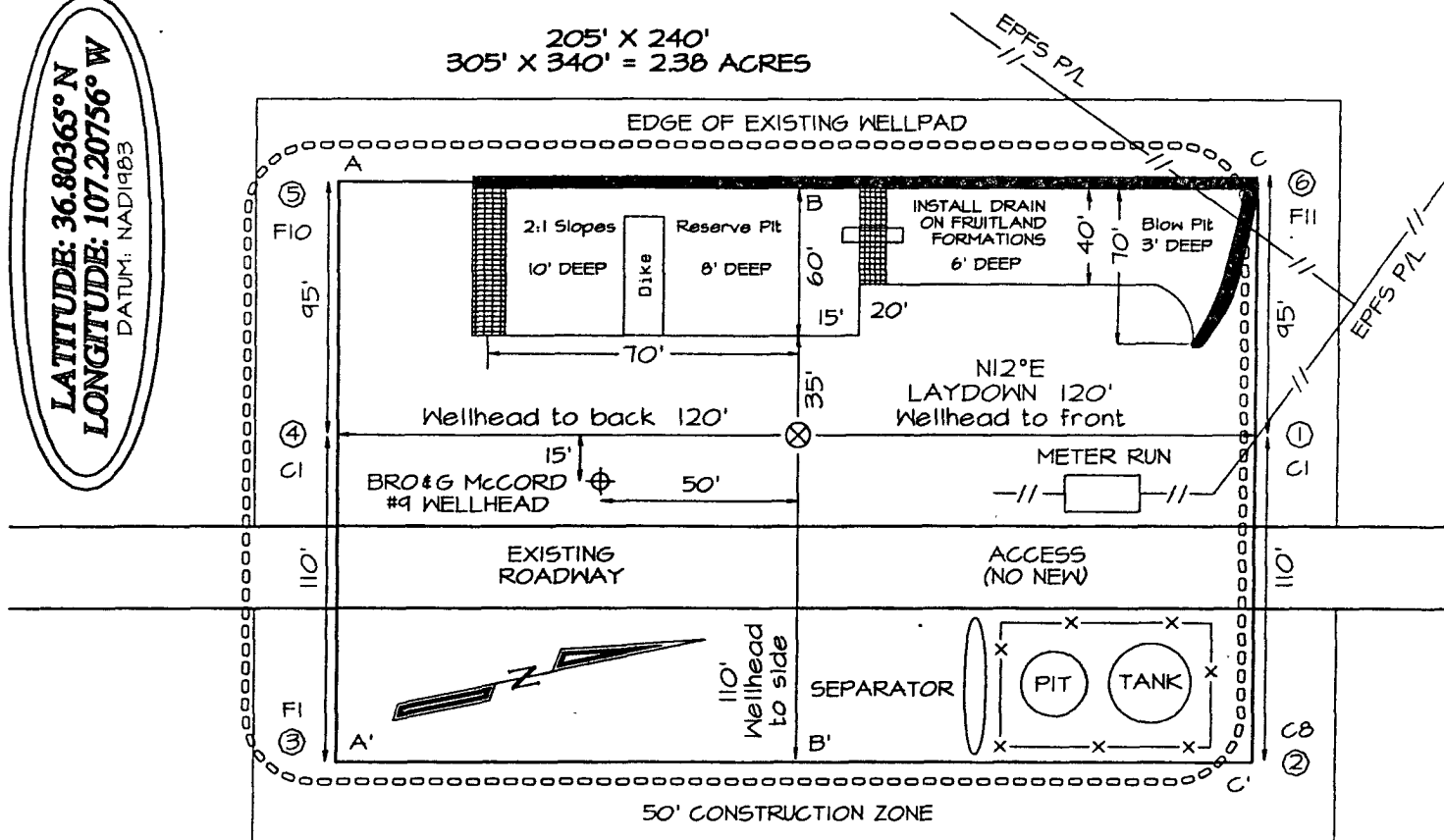
AUG 23 2007

Conditions of Approval (if any):

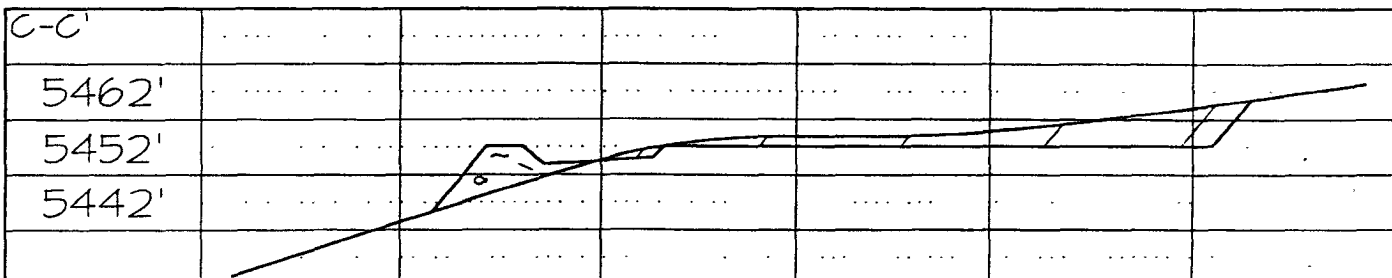
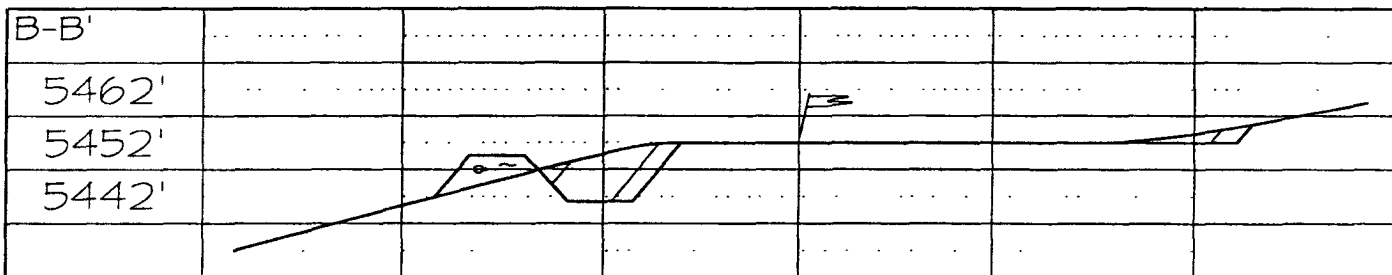
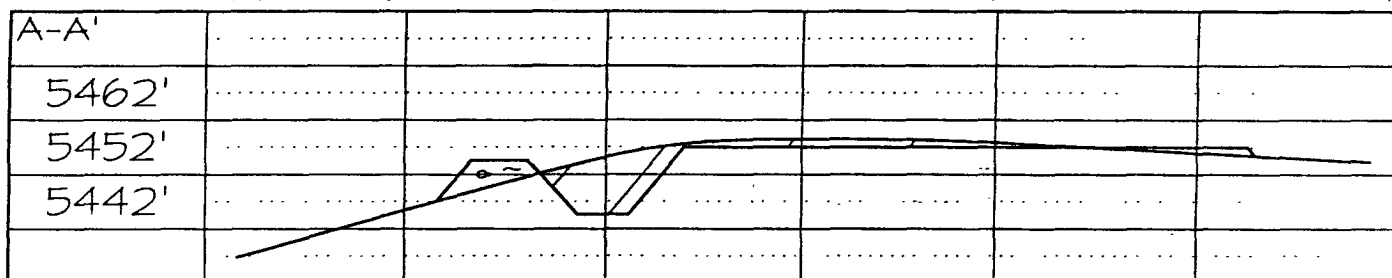
BURLINGTON RESOURCES OIL & GAS COMPANY McCORD #100
840' FNL & 1730' FEL, SECTION 21, T30N, R13W, NMPM, SAN JUAN COUNTY, NM
GROUND ELEVATION: 5452' DATE: FEBRUARY 8, 2006

LATITUDE: 36.80365° N
LONGITUDE: 107.20756° W
 DATUM: NAD1983

205' X 240'
 305' X 340' = 2.38 ACRES



Reserve Pit Dike: to be 8' above Deep side (overflow - 3' wide and 1' above shallow side).
 Blow Pit: overflow pipe halfway between top and bottom and to extend over plastic liner and into blow pit.



Note: Contractor should call One-Call for location of any marked or unmarked buried pipelines or cables on well pad and/or access road at least two (2) working days prior to construction

OPERATIONS PLAN

Well Name: McCORD 100
Location: 840' FNL & 1730' FEL, Section Sec 21-T30N-R13W
San Juan County, New Mexico
Formation: Basin Fruitland Coal/Fulcher Kutz Pictured Cliffs
Elevation: 5452' GL

<u>Formation Tops:</u>	<u>Top</u>	<u>Bottom</u>	<u>Contents</u>
Surface			
Ojo Alamo		Surface'	aquifer
Kirtland	Surface'	1201'	gas
Fruitland Coal	1201'	1401'	gas
Pictured Cliffs	1401'	1601'	gas
Total Depth:	1601'		gas

Logging Program:

Mudlog: none
Coring: none

Mud Program:

<u>Interval</u>	<u>Type</u>	<u>Weight</u>	<u>Vis.</u>	<u>Fluid Loss</u>
0 - 120'	Spud MUD/Air/Air Mist	8.4 - 9.0	40 - 50	no control
0 - 1601'	Non-dispersed	8.4 - 9.0	40 - 50	no control

Casing Program (as listed, the equivalent, or better):

<u>Hole Size</u>	<u>Depth Interval</u>	<u>Csg.Size</u>	<u>Wt.</u>	<u>Grade</u>
8 3/4"	0' - 120'	7"	20.0#	J-55
6 1/4"	0' - 1601'	4 1/2"	10.4#	J-55

Tubing Program:

<u>Depth Interval</u>	<u>Csg.Size</u>	<u>Wt.</u>	<u>Grade</u>
0' - 1601'	2 3/8"	4.7#	J-55

Float Equipment:

Float Equipment: 7" surface casing - saw tooth guide shoe. Centralizers will be run in accordance with Onshore Order #2.

4 1/2" production casing - guide shoe and self-fill float collar. Standard centralizers every fourth joint up to the base of the surface pipe.

Wellhead Equipment: 7" x 4 1/2" x 2 3/8" 2000 psi xmas tree assembly.

Cementing:

7" surface casing -

Pre-Set Drilled, Cement with Type I, II cement with 20% flyash mixed at 14.5 ppg, 1.61 cu ft per sack yield. (bring cement to surface) Wait on cement for 24 hours for pre-set holes before pressure testing or drilling out from under surface.

Conventionally Drilled

Cement with 42 sx Type III cement with 0.25 pps Celloflake, 3% CaCl. (54 cu ft of slurry, 200% excess, bring cement to surface) Wait on cement for 8 hrs for conventionally set holes before pressure testing or drilling out from under surface.

WOC until cement establishes 250 psi compressive strength prior to NU of BOPE.

4 1/2" production casing - lead w/57 sacks (122 cu ft) Premium Lite with 3% calcium chloride, 5 pps LCM-1, and 1/4#/sack flocele, 0.4% FL-52, & 0.4% SMS (cu ft). Tail with 90 sacks (124 cu ft) Type III cmt with 1% calcium chloride, 1/4#/sack flocele and 0.2% FL-52 (246 cu.ft., 50% excess to circulate to surface).

Note: If open hole logs are run, cement volumes will be based on 25% excess over caliper volumes.

BOP and tests:

Surface to production TD - 11" 2000 psi (minimum) double gate BOP stack (Reference Figure #1). Prior to drilling out surface casing, test BOPE to 600 psi for 30 min.

From surface to production TD - a choke manifold will be installed in accordance with Onshore Order No. 2 (Reference Figure #3).

Pipe rams will be actuated at least once each day and blind rams actuated once each trip to test proper functioning. An upper kelly cock valve with handle and drill string safety valves to fit each drill string will be maintained and available on the rig floor.

Additional information:

- * The Fruitland Coal and Pictured Cliffs formation will be commingled.
- * Anticipated pore pressure for the Fruitland is less than 500 psi.
- * This gas is dedicated.
- * The East half of Section 21 is dedicated to the Fruitland Coal and the NE/4 of Section 21 is dedicated to the Pictured Cliffs formation.

Date:

4/13/2006

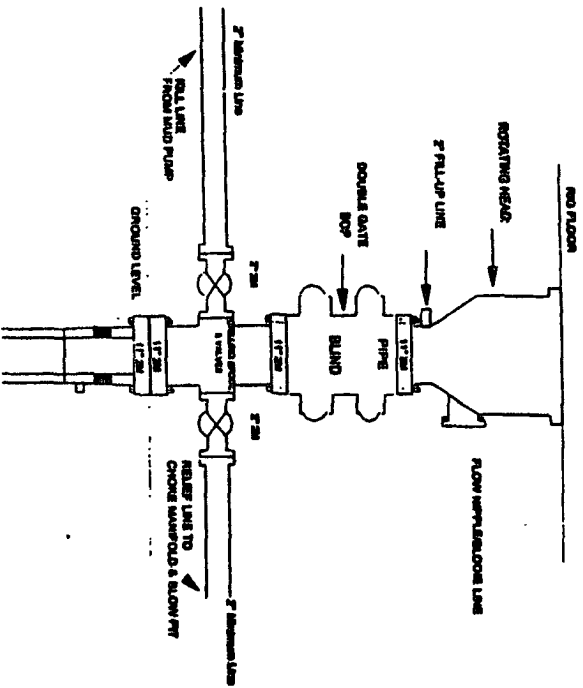
Drilling Engineer:

Adam G. Hunter

Blowout preventor equipment (BOPE) tests must be performed using an appropriately sized test plug. The BOPE test must be performed and recorded using a test pump, calibrated test gauges and a properly calibrated strip or chart recorder. The test must be recorded in the driller's log and will include a low pressure test requirement of 250 psig held for five minutes and a high pressure test requirement held for ten minutes as described in Onshore Order No. 2 or otherwise authorized in the Application for Permit to Drill (APD). A successful BOPE test using a test plug is considered when no pressure drop occurs over the duration of the test. Test gauges and recorders must be of the proper range and resolution commensurate with the authorized test pressure. Where intermediate casing strings are used, only one BOPE test will be necessary contingent upon the test being conducted to the highest approved test pressure to which the BOPE will be exposed. Casing pressure tests must be held for 30 minutes with no more than a 10 percent pressure drop during the duration of the test.

Burlington Resources

Drilling Rig 2000 psi System



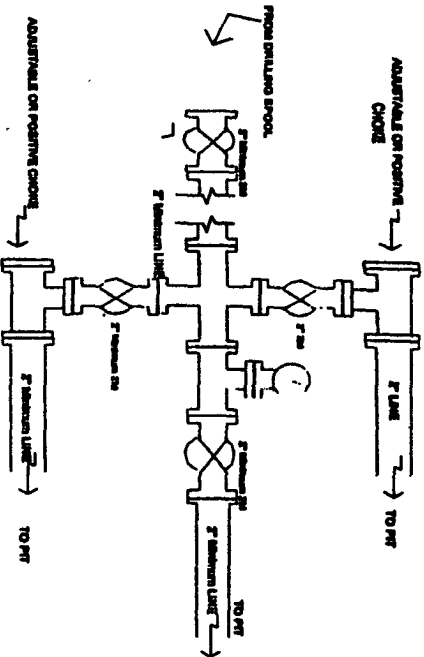
BOP Installation from Surface Casing Point to Total Depth. 1 1/2" Bore 10" Nominal. 2000 psi working pressure double gate BOP to be equipped with blind rams and pipe rams. All BOP equipment is 2000 psi working pressure. All BOP equipment is 2000 psi working pressure.

Figure #1

4-20-01

BURLINGTON RESOURCES

Drilling Rig Choke Manifold Configuration 2000 psi System



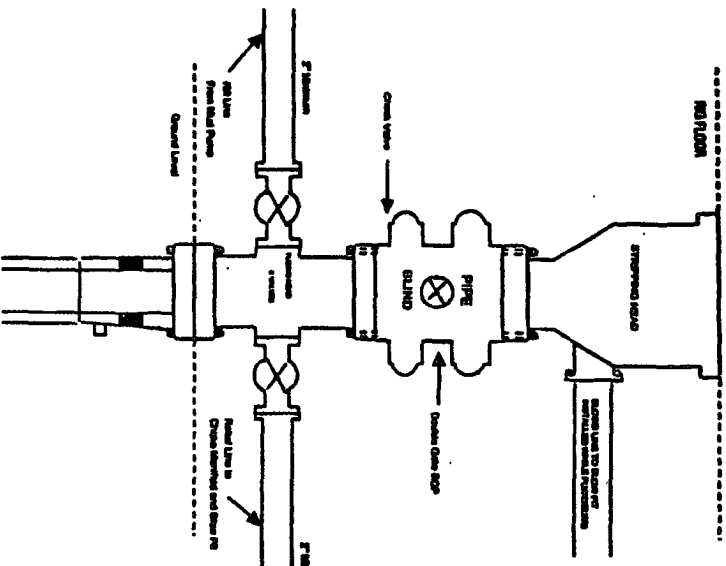
Choke manifold installation from Surface Casing Point to Total Depth. 2,000psi working pressure equipment with two chokes.

Figure #3

4-20-01

BURLINGTON RESOURCES

Completion/Workover Rig BOP Configuration 2,000 psi System



Minimum BOP installation for all Completion/Workover Operations. 7-1/16" bore, 2000 psi minimum working pressure double gate BOP to be equipped with blind and pipe rams. A stripping head to be installed on the top of the BOP. All BOP equipment is 2000 psi working pressure or greater excluding 500 psi stripping head.

Figure #2