

UNITED STATES
DEPARTMENT OF INTERIOR
BUREAU OF LAND MANAGEMENT

FORM APPROVED
Budget Bureau No. 1004-0135
Expires: March 31, 1993

SUNDRY NOTICE AND REPORTS ON WELLS

Do not use this form for proposals to drill or to deepen or reentry to a different reservoir. Use "APPLICATION TO DRILL" for permit for such proposals

5 Lease Designation and Serial No.
AM 9: 57078889

6 If Indian, Allottee or Tribe Name

7 If Unit or CA, Agreement Designation

SUBMIT IN TRIPLICATE

1. Type of Well
Oil Well X Gas Well Other

8. Well Name and No.
ROSA UNIT #43

2. Name of Operator
WILLIAMS PRODUCTION COMPANY

9. API Well No.
30-039-07954

3. Address and Telephone No.
PO BOX 3102 MS 25-4, TULSA, OK 74101 (918) 573-3046

10. Field and Pool, or Exploratory Area
BASIN DAKOTA

4. Location of Well (Footage, Sec., T., R., M., or Survey Description)
1550' FSL & 1590' FEL SEC. 19, T-31N, R04W

11. County or Parish, State
RIO ARRIBA, NM

CHECK APPROPRIATE BOX(s) TO INDICATE NATURE OF NOTICE, REPORT, OR OTHER DATA

TYPE OF SUBMISSION

TYPE OF ACTION

☐ Notice of Intent
☐ Subsequent Report
☐ Final Abandonment

Abandonment
Recompletion
Plugging Back
Casing Repair
Altering Casing
☒ Other TUBING REPAIR
& COMPLETION UPGRADE

Change of Plans
New Construction
Non-Routine Fracturing
Water Shut-Off
Conversion to Injection
Dispose Water

(Note: Report results of multiple completion on Well Completion or Recompletion Report and Log form.)

13. Describe Proposed or Completed Operations (Clearly state all pertinent details, and give pertinent dates, including estimated date of starting any proposed work. If well is directionally drilled, give subsurface locations and measured and true vertical depths for all markers and zones pertinent to this work.)*

Objective: Clear tubing plug & replace tubing, cleanout possible fill in rathole, RTP.

- 1) MIRU, kill, ND tree, & NU BOP's.
- 2) POOH with tubing.
- 3) Clean out fill to PBTD.
- 4) Hangoff tubing at 8,225'.
- 5) ND BOP's & NU tree.
- 6) Release rig.
- 7) Return to production.

RCVD AUG 24 '07

OIL CONS. DIV.

DIST. 3

14. I hereby certify that the foregoing is true and correct

Signed

Rachel Lippard

Title Engineering Tech

Date August 22, 2007

(This space for Federal or State office use)

Approved by

Title

Date

AUG 23 2007

Conditions of approval, if any:

FARMINGTON FIELD OFFICE

Title 18 U.S.C. Section 1001, makes it a crime for any person knowingly and willfully to make to any department or agency of the United States any false, fictitious or fraudulent statements or representations as to any matter within its jurisdiction.

NAACCD



EXPLORATION & PRODUCTION

RCVD AUG 24 '07
OIL CONS. DIV.

DIST. 3

TUBING REPAIR & COMPLETION UPGRADE

**ROSA UNIT 43 DK
RIO ARRIBA, NM
AUGUST 2007**

WELLBORE STATUS:

PBTD 8,304' MD

2-3/8", 4.7 #/FT, 8- RD J-55 To 8,251' MD---PACKERLESS

ESTIMATED SIBHP = 450± PSIG

ESTIMATED SIBHT = 188± °F

OBJECTIVE: Clear tubing plug & replace tubing, cleanout possible fill in rathole, RTP.

1. MIRU, kill, ND tree, & NU BOP's.
2. POOH with tubing.
3. Clean out fill to PBTD.
4. Hangoff tubing at 8,225'.
5. ND BOP's & NU tree.
6. Release rig.
7. Return to production.

PRIOR TO PRIMARY JOB

- 1) Acquire 8,150 ft of 2-3/8" 4.7 #/ft J-55 eue 8rd tubing
- 2) Acquire 300 ft of 2-3/8" 4.6# J-55 10rd tubing with x/over to 8rd tubing **and turned down collars.**
- 3) Acquire 2-3/8" eue 10 rd threaded **1.875" minimum I.D. X or XN** type nipple (or 8rd and xover).
- 4) Test rig anchors.
- 5) Verify location is OK for rig operations.

- 6) Ensure JSA, ECP's and lockout procedures are in place for the flowline and other energized piping or equipment.

SAFETY NOTICE

PERSONNEL SAFETY IS THE NUMBER ONE JOB.
NO EXCEPTIONS!!!

PROCEDURE:

Note: A safety meeting shall be held each morning before work and subsequent "tailgate" safety meetings are to be held during the day when operation objectives shift in nature and intent (i.e. beginning/ending fishing operations, squeeze jobs, rigging down, etc.)

1. Spot equipment, MIRU.
2. Blow down gas on well as possible to kill.
3. Pump into both tubing string and backside to load well with filtered FLSW + 2% KCl as necessary to kill well.

Note: Steps 2 & 3 are to be performed each day before work begins and as necessary throughout the workday (with expected departure(s) when tubing is out of the hole).

4. ND tree and NU BOP's (blind & pipe rams).
5. Test BOP's for operation and have shop test report for pressure on location.

Note: Step 5 is to be performed each time BOP stack is nipped up.

6. POOH laying down tubing.
7. RIH with completion string (nipple on bottom 10rd 4.6 # tubing on above to 8,000' MD (225' +/- on bottom) and then top of string to surface 4.7# 8rd tubing) and circulate out to plug back TD at 8,189'.
8. After returns clean up, circulate a sweep of BJ Techniclean then PU to 8,215-8,230' and hang off tubing.

ATTENTION

Only use pipe dope on the pins. **Do not dope the couplings.** If pipe dope gets on the exterior of the couplings or the pipe it should be wiped clean from the pipe or coupling. Do not use excess pipe dope and only dope the threads on the pins.

Note: Install 1.875" minimum ID nipple either on bottom or 1 jt off bottom.

Note: This well should be dead and the BOP's shall be closed and locked at the end of daily operations.

9. N/D BOP's and N/U wellhead.
10. Test the well by wireline tagging (confirmed with EOT locator only), swabbing or flowing well from tubing to make certain the tubing is not plugged prior to releasing the rig.
11. If tubing is not plugged, release rig. If tubing is plugged contact Tulsa Engineer immediately.
12. R/D, move off location.
13. Return well to production.

**DO NOT RELEASE THE RIG FROM LOCATION UNTIL IT HAS BEEN
CONFIRMED THAT THE TUBING IS CLEAR.**

ROSA UNIT #43
DAKOTA

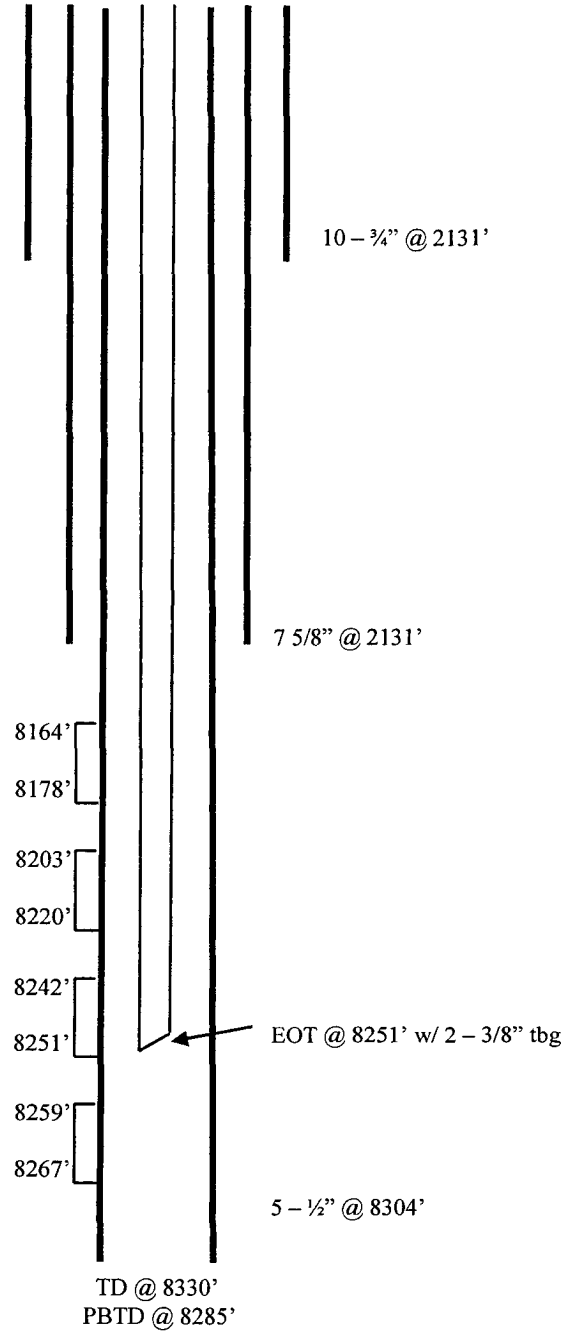
Spud date: 11/28/61

Completed: 01/16/62

Location:

1550' FSL and 1590' FEL
Sec 19, T31N, R4W
Rio Arriba, New Mexico

Elevation: 6571.5' GR
API #: 30-039-07954



Hole Size	Casing	Cement	Volume	Top of CMT
13-5/8"	10-3/4"	200 sxs	213 cu.ft	surface
9-5/8"	7-5/8"	200 sxs	4097 cu ft.	surface
6-3/4"	5-1/2"	200 sxs	8304 cu.ft.	surface