

District I
PO Box 1980, Hobbs, NM 88241-1980
District II
811 S. 1st Street, Artesia, NM 88210-2834
District III
1000 Rio Brazos Rd., Aztec, NM 87410
District IV
2040 South Pacheco, Santa Fe, NM 87505

State of New Mexico
Energy, Minerals & Natural Resources Department

OIL CONSERVATION DIVISION
2040 South Pacheco
Santa Fe, NM 87505

Form C-10
Revised October 18, 19
Instructions on ba
Submit to Appropriate District C
State Lease - 6 Copi
Fee Lease - 5 Copi

☐ AMENDED REPORT

APPLICATION FOR PERMIT TO DRILL, RE-ENTER, DEEPEN, PLUGBACK, OR ADD A ZONE

¹ Operator name and Address XTO Energy Inc. 2700 Farmington Ave., Bldg. K. Ste 1 Farmington, NM 87401		² OGRID Number 167067
⁴ Property Code 22721	⁵ Property Name Gerk Gas Com	³ API Number 45-31285 ⁶ Well No. #1G

⁷ Surface Location									
UL or lot no.	Section	Township	Range	Lot. Idn	Feet from the	North/South Line	Feet from the	East/West line	County
F	30	29N	09W		1785'	North	855'	West	San Juan

⁸ Proposed Bottom Hole Location If Different From Surface									
UL or lot no.	Section	Township	Range	Lot. Idn	Feet from the	North/South Line	Feet from the	East/West line	County
⁹ Proposed Pool 1 Basin Dakota					¹⁰ Proposed Pool 2 Blanco Mesaverde				

¹¹ Work Type Code N	¹² Well Type Code G	¹³ Cable/Rotary R	¹⁴ Lease Type Code P (private)	¹⁵ Ground Level Elevation 5,613' Ground Level
¹⁶ Multiple Yes	¹⁷ Proposed Depth 6,850'	¹⁸ Formation Dakota	¹⁹ Contractor Bearcat Drilling	²⁰ Spud Date Winter 2003

²¹ Proposed Casing and Cement Program

Hole Size	Casing Size	Casing weight/foot	Setting Depth	Sacks of Cement	Estimated TOC
12-1/4"	9-5/8"	36.0 #/ft	260'	+140 sx	Surface
8-3/4"	7"	20.0 #/ft	3,000'	+400 sx	Surface
6-1/4"	4-1/2"	10.5 #/ft	6,850'	+310 sx	2,500'

²² Describe the proposed program. If this application is to DEEPEN or PLUG BACK give the data on the present productive zone and proposed new productive zone. Describe the blowout prevention program, if any. Use additional sheets if necessary.

Drill to 260' Run new 9-5/8" csg. Cmt csg w/140 sx cl "B" cmt (15.6 ppg, 1.18 cuft/sx) w/2% CaCl & 1/4# Celloflake. Attempt to circ cmt to surface. NU BOP. Test BOP. Mix mud. Drill ahead w/8-3/4" hole to 3,000'. Run new 7" csg. Cmt csg w/250 sx Lite Weight cmt (11.4 ppg, 3.03 cuft/sx) followed by 150 sx Type III cmt (14.5 ppg, 1.39 cuft/sx). Attempt to cmt to surf.
Drill to TD (@ 6,850'). Log well. Run new 4-1/2" csg to btm. Cmt csg with approx 60 sx Premium Lite cmt (11.8 ppg, 2.36 cuft/sx) followed by +250 sx Premium Lite HS cmt (12.5 ppg, 2.01 cuft/sx)
Est top of cmt @ 2,500'. Verify TOC with temp survey.
See enclosed drawing for BOP stack configuration.

²³ I hereby certify that the information given above is true and complete to the best of my knowledge and belief.

Signature:

Printed name: Jeffrey W. Patton 12/18/02

Title: Drilling Engineer

OIL CONSERVATION DIVISION

Approved by:

Title: DEPUTY OIL & GAS INSPECTOR, DIST. 31

Approval Date:

Expiration Date:

DISTRICT I
1625 N. French Dr., Hobbs, N.M. 88240

State of New Mexico
Energy, Minerals & Natural Resources Department

Form C-102
Revised August 15, 2000

DISTRICT II
811 South First, Artesia, N.M. 88210

DISTRICT III
1000 Rio Brazos Rd., Aztec, N.M. 87410

DISTRICT IV
2040 South Pacheco, Santa Fe, NM 87505

OIL CONSERVATION DIVISION

2040 South Pacheco
Santa Fe, NM 87505

Submit to Appropriate District Office
State Lease - 4 Copies
Fee Lease - 3 Copies

☐ AMENDED REPORT

WELL LOCATION AND ACREAGE DEDICATION PLAT

¹ API Number 30-045-31285	² Pool Code 71599	³ Pool Name BASIN DAKOTA
⁴ Property Code 22721	⁵ Property Name GERK GAS COM "B"	⁶ Well Number 1G
⁷ GRID No. 167067	⁸ Operator Name XTO ENERGY INC.	⁹ Elevation 5613'

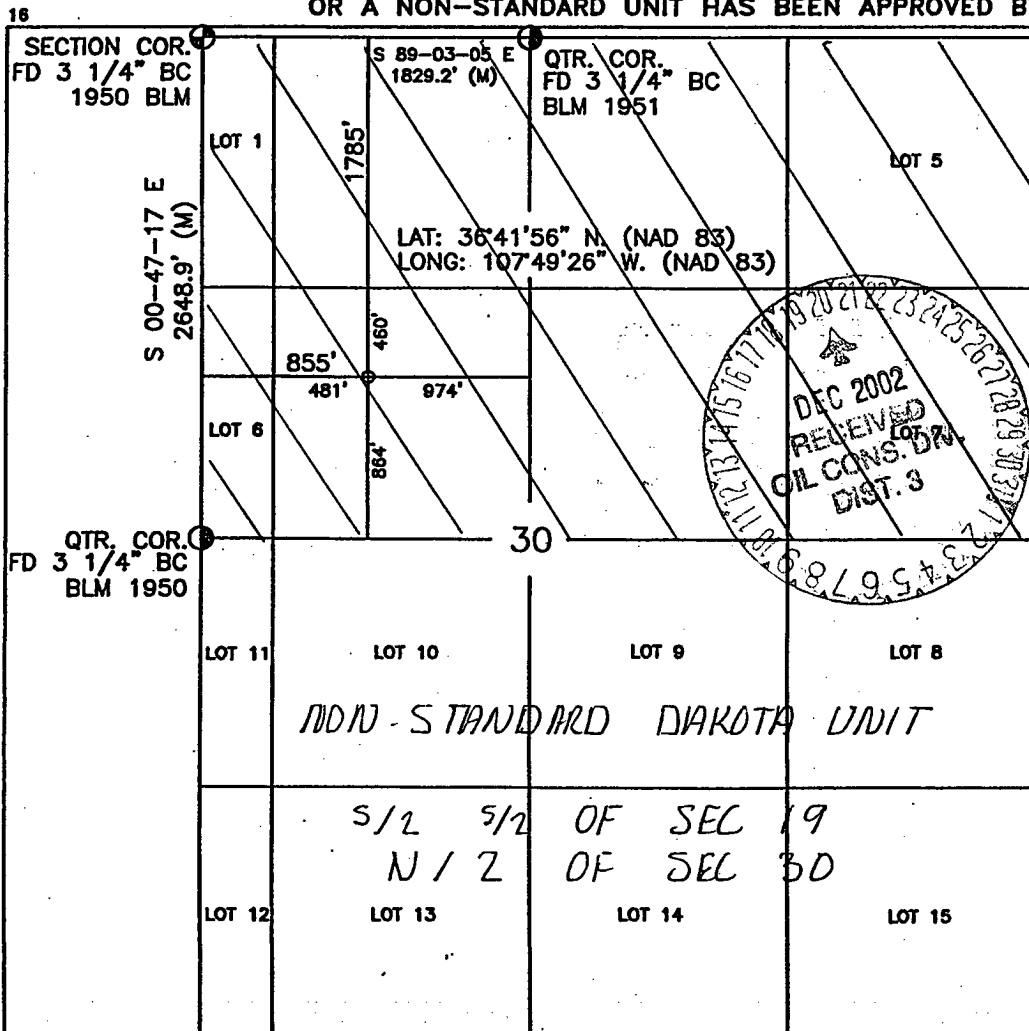
¹⁰ Surface Location

UL or lot no.	Section	Township	Range	Lot Idn	Feet from the	North/South line	Feet from the	East/West line	County
F	30	29-N	9-W		1785'	NORTH	855'	WEST	SAN JUAN

¹¹ Bottom Hole Location If Different From Surface

UL or lot no.	Section	Township	Range	Lot Idn	Feet from the	North/South line	Feet from the	East/West line	County
¹² Dedicated Acres 407.56			¹³ Joint or Infill		¹⁴ Consolidation Code		¹⁵ Order No. R-2046 TRACT "G"		

NO ALLOWABLE WILL BE ASSIGNED TO THIS COMPLETION UNTIL ALL INTERESTS HAVE BEEN CONSOLIDATED
OR A NON-STANDARD UNIT HAS BEEN APPROVED BY THE DIVISION



17 OPERATOR CERTIFICATION

I hereby certify that the information contained herein
is true and complete to the best of my knowledge and
belief

Signature Jeffrey W Patton
Printed Name JEFFREY W PATTON
Title DRILLING ENGINEER
Date 12-19-02

18 SURVEYOR CERTIFICATION

I hereby certify that the well location shown on this plat
was plotted from field notes of actual surveys made by
me or under my supervision, and that the same is true
and correct to the best of my belief

Date of Survey 12/19/02
Signature and Seal of Professional Surveyor:

Certificate Number 14827

DISTRICT I
1625 N. French Dr., Hobbs, N.M. 88240

DISTRICT II
811 South First, Artesia, N.M. 88210

DISTRICT III
1000 Rio Brazos Rd., Aztec, N.M. 87410

DISTRICT IV
2040 South Pacheco, Santa Fe, NM 87505

State of New Mexico
Energy, Minerals & Natural Resources Department

Form C-102
Revised August 15, 2000

Submit to Appropriate District Office
State Lease - 4 Copies
Fee Lease - 3 Copies

OIL CONSERVATION DIVISION

2040 South Pacheco
Santa Fe, NM 87505

☐ AMENDED REPORT

WELL LOCATION AND ACREAGE DEDICATION PLAT

¹ API Number 30-015-31285	² Pool Code 77319	³ Pool Name BLANCO MESAVERDE
⁴ Property Code 22721	⁵ Property Name GERK GAS COM "B"	⁶ Well Number 1G
⁷ GRID No. 167067	⁸ Operator Name XTO ENERGY INC.	⁹ Elevation 5613'

¹⁰ Surface Location

UL or lot no.	Section	Township	Range	Lot Idn	Feet from the	North/South line	Feet from the	East/West line	County
F	30	29-N	9-W		1785'	NORTH	855'	WEST	SAN JUAN

¹¹ Bottom Hole Location If Different From Surface

UL or lot no.	Section	Township	Range	Lot Idn	Feet from the	North/South line	Feet from the	East/West line	County
¹² Dedicated Acres 407.56					¹³ Joint or Infill		¹⁴ Consolidation Code		¹⁵ Order No. R-1048 R-2046 TRACT "E"

NO ALLOWABLE WILL BE ASSIGNED TO THIS COMPLETION UNTIL ALL INTERESTS HAVE BEEN CONSOLIDATED
OR A NON-STANDARD UNIT HAS BEEN APPROVED BY THE DIVISION

16

SECTION COR. FD 3 1/4" BC 1950 BLM

QTR. COR. FD 3 1/4" BC BLM 1951

QTR. COR. FD 3 1/4" BC BLM 1950

LOT 1

LOT 5

LOT 6

LOT 7

LOT 11

LOT 10

LOT 9

LOT 8

LOT 12

LOT 13

LOT 14

LOT 15

S 00-47-17 E 2648.9' (M)

S 89-03-05 E 1829.2' (M)

LAT: 36°41'56" N. (NAD 83)
LONG: 107°49'26" W. (NAD 83)

1785'

855'

481'

974'

460'

864'

30

NON-STANDARD MESAVERDE UNIT

2 1/2 5/2 OF SEC 19
N 1/2 OF SEC 30

17 OPERATOR CERTIFICATION

I hereby certify that the information contained herein is true and complete to the best of my knowledge and belief

Signature Jeffrey W Patton
Printed Name JEFFREY W PATTON
Title DRILLING ENGINEER
Date 12-19-02

18 SURVEYOR CERTIFICATION

I hereby certify that the well location shown on this plat was plotted from field notes of actual surveys made by me or under my supervision, and that the same is true and correct to the best of my belief

Date of Survey 12-19-02
Signature and Seal of Professional Surveyor
DAVID M. JOHNSON
14827
REGISTERED PROFESSIONAL SURVEYOR
Certificate Number

BOP SCHEMATIC FOR DRILLING OPERATIONS CLASS 1 (2M) NORMAL PRESSURE

TESTING PROCEDURE

1. Test BOP after installation:

Pressure test BOP to 200-300
psig (low pressure) for 5 min.

Test BOP to Working Press or
to 70% internal yield of surf csg
(10 min).

2. Test operation of (both) rams on every trip.

3. Check and record Accumulator pressure on every tour.

4. Re-pressure test BOP stack after changing out rams.

5. Have kelly cock valve with handle available.

6. Have safety valve and subs to fit all sizes of drill string.

