

District I
1625 N French Dr., Hobbs, NM 88240

District II
1301 W Grand Avenue, Artesia, NM 88210

District III
1000 Rio Brazos Rd., Aztec, NM 87410

District IV
1220 S. St. Francis Dr., Santa Fe, NM 87505

State of New Mexico
Energy, Minerals & Natural Resources Department

OIL CONSERVATION DIVISION
1220 South St. Francis Dr.
Santa Fe, NM 87505

Form C-102

Revised October 12, 2005

Instructions on back

Submit to Appropriate District Office

State Lease - 4 Copies

Fee Lease - 3 Copies

RCVD AUG 23 '07
AMENDED REPORT
OIL CONS. DIV.

DIST. 3

WELL LOCATION AND ACREAGE DEDICATION PLAT **30-039-29841**

*API Number 30-039-29841		*Pool Code 72319 / 71599	*Pool Name BLANCO MESAVERDE / BASIN DAKOTA
*Property Code 17033	*Property Name ROSA UNIT		*Well Number 166B
*OGRID No. 120782	*Operator Name WILLIAMS PRODUCTION COMPANY		*Elevation 6385'

¹⁰ Surface Location

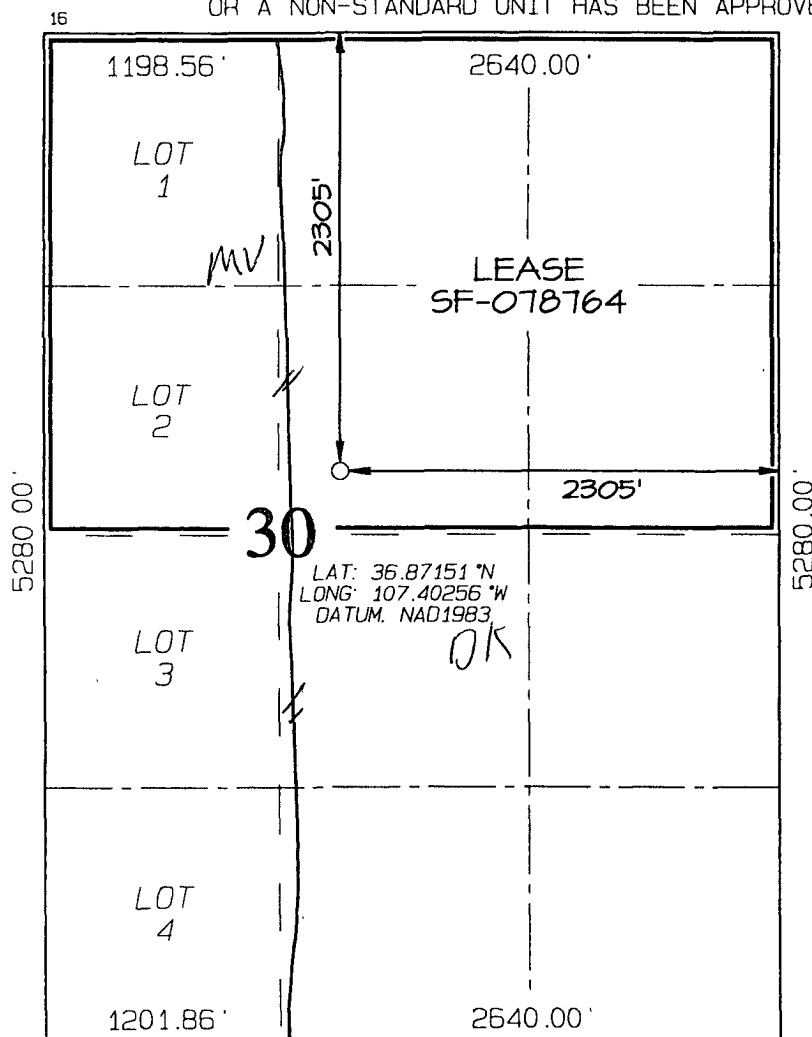
UL or lot no	Section	Township	Range	Lot Idn	Feet from the	North/South line	Feet from the	East/West line	County
G	30	31N	5W		2305	NORTH	2305	EAST	RIO ARriba

¹¹ Bottom Hole Location If Different From Surface

UL or lot no	Section	Township	Range	Lot Idn	Feet from the	North/South line	Feet from the	East/West line	County

¹² Dedicated Acres 232.69 Acres - (N/2) MV 320 E/2 OK	¹³ Joint or Infill	¹⁴ Consolidation Code	¹⁵ Order No
---	-------------------------------	----------------------------------	------------------------

NO ALLOWABLE WILL BE ASSIGNED TO THIS COMPLETION UNTIL ALL INTERESTS HAVE BEEN CONSOLIDATED
OR A NON-STANDARD UNIT HAS BEEN APPROVED BY THE DIVISION



¹⁷ OPERATOR CERTIFICATION

I hereby certify that the information contained herein is true and complete to the best of my knowledge and belief, and that this organization either owns a working interest or unleased mineral interest in the land including the proposed bottom-hole location or has a right to drill this well at this location pursuant to a contract with an owner of such a mineral or working interest, or to a voluntary pooling agreement or a compulsory pooling order heretofore entered by the division.

Larry Higgins 8-13-07
Signature Date

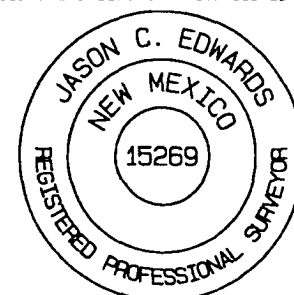
LARRY HIGGINS
Printed Name

¹⁸ SURVEYOR CERTIFICATION

I hereby certify that the well location shown on this plat was plotted from field notes of actual surveys made by me or under my supervision, and that the same is true and correct to the best of my belief

Survey Date: OCTOBER 4, 2005

Signature and Seal of Professional Surveyor



JASON C. EDWARDS
Certificate Number 15269



WILLIAMS PRODUCTION COMPANY

Operations Plan

(Note: This procedure will be adjusted on site based upon actual conditions)

DATE: 8/8/2007 **FIELD:** Basin DK/ BlancoMV
WELL NAME: Rosa #166B **SURFACE:** BLM
BH LOCATION: SWNE Sec 30-31N-5W **MINERALS:** BLM
Rio Arriba, NM
ELEVATION: 6,385' GR **LEASE #** SF-078764
MEASURED DEPTH: 8,034'

I. **I. GEOLOGY:** Surface formation - San Jose

A. **FORMATION TOPS:** (KB)

Name	MD	Name	MD
Ojo Alamo	2,514	Menefee	5,474
Kirtland	2,644	Point Lookout	5,644
Fruitland	3,009	Mancos	5,989
Pictured Cliffs	3,244	Gallup	7,014
Lewis	3,539	Greenhorn	7,734
Cliff House	5,419	Graneros	7,789
		Dakota	7,919
		TD	8,034

B. **MUD LOGGING PROGRAM:** Mudlogger on location at 100' above Gallup SS to TD. Mud logger to pick TD.

C. **LOGGING PROGRAM:** HRI from surface casing to TD. SDL\DSN\DSN over zones of interest.

D. **NATURAL GAUGES:** Gauge any noticeable increases in gas flow. Record all gauges in Tour book and on morning reports.

II. **DRILLING**

A. **MUD PROGRAM:** Clear water with benex to 7-5/8" casing point. Convert to a LSND mud to log and run pipe. Treat for lost circulation as necessary. Obtain 100% returns prior to cementing. Notify Engineering of any mud losses. Use air w/Air Hammer from 7-5/8in. csg.to TD.

B. **BOP TESTING:** While drill pipe is in use, the pipe rams and the blind rams will be function tested once each trip. The anticipated reservoir is expected to be less than 1300 psi, so the BOPE will be tested to **250 psi (Low) for 5 minutes** and **1500 psi (High) for 10 minutes**. Utilize a BOPE Testing Unit with a recording chart and appropriate test plug for testing. The drum brakes will be inspected and tested each tour. **All tests and inspections will be recorded in the tour book as to time and results.**

III. MATERIALS**A. CASING PROGRAM:**

CASING TYPE	OH SIZE (IN)	DEPTH (MD) (FT)	CASING SIZE (IN)	WEIGHT(LB)	GRADE
Surface	14 3/4	300	10 3/4	40.5	K-55
Intermediate	9 7/8	3,719	7 5/8	26.4	K-55
Longstring	6 3/4	8,034	5 1/2	17	N-80

B. FLOAT EQUIPMENT:

1. SURFACE CASING: 10 3/4" notched regular pattern guide shoe. Run (1) standard centralizer on each of the bottom (4) joints of Surface Casing.
2. INTERMEDIATE CASING: 7 5/8" cement nose guide shoe with a self-fill insert float. Place float collar one joint above the shoe. Install (1) Turbulent centralizer on each of the bottom (3) joints and one standard centralizer every (3) joints to 2,500 ft. Run (1) Turbulent centralizer at 2,700 ft., 2,500 ft., 2,300ft., 2,000ft., 1,500 ft., and 1,000 ft. (NTL-FRA 90-1).
3. PRODUCTION LINER / CASING: 5-1/2" whirler type cement nose guide shoe with a latch collar on top of 20' bottom joint. Place marker joint above 5,400'. Place centralizers as needed across selected production intervals.

C. CEMENTING:

(Note: Volumes may be adjusted onsite due to actual conditions)

1. SURFACE: Slurry: 255sx (356 cu.ft.) of "Type III" + 2% CaCl₂ + ¼ # of cello-flake/sk (Yield = 1.39 cu.ft./sk, Weight = 14.5 #/gal.). The 100% excess should circulate cement to the surface. WOC 12 hours. Test csg to 1500psi.
2. INTERMEDIATE: Lead - 635 sx (1,319) cu.ft.) of "Premium Light with 8% gel and 1/4# cello-flake/sk (Yield = 2.09 cu.ft./sk, Weight = 12.1 #/gal.). Tail - 100 sx (139cu.ft.) of "Type III" with 1/4# cello-flake/sk, (Yield = 1.4 cu.ft./sk, Weight = 14.5#/gal.). Use **100% excess in Lead Slurry** to circulate to surface. **No excess in Tail Slurry**. Total volume = 1,459 cu.ft. Bump Plug to 1,500 psi. Notify engineering if cement is not circulated to surface.
3. PRODUCTION CASING: 10 bbl Gelled Water space. Cement: 210 sx (442 ft³) of Premium Light HS + 1% FL-52 + .2% CD-32, 0.1% R-3, 3 #/sk CSE, ¼ #/sk cello flake and 4% Phenoseal. (Yield = 2.15 ft³/sk, Weight = 12.3 #/gal.). Displace cement at a minimum of 8 BPM. The 20% excess in slurry should cover 100 ft into intermediate casing. Total volume 442ft³. WOC 12 hours

IV. IV COMPLETION**A. CBL**

1. Run Cement Bond Log across all intervals to be perforated and find Top of Cement behind all casing strings if cement not circulated to surface..

B. PRESSURE TEST

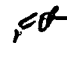
1. Pressure test 5-1/2" casing to 6000 psi max, hold at 1500 psi for 30 minutes.

C. STIMULATION

1. Stimulate Dakota with approximately 10,000# of LiteProp 108™ sand in slick water..
2. Isolate Dakota with a RBP.
3. Stimulate Point Lookout with approximately 9300# of 14/30 LiteProp™ in slick water.
4. Isolate Point Lookout with a RBP.
5. Perforate the Menefee/Cliff House as determined from the open hole logs.
6. Stimulate with approximately 9300# of 14/30 LiteProp™ in slick water.
7. Test each zone before removing bridge plugs.

D. RUNNING TUBING

1. Dakota: Run 2-1/16", 3.25#, J-55, IJ tubing with 1/2 mule shoe on bottom , SN with pump-out plug on top of adeern joint and 5 Seal Units. Land tubing approximately 100' below top Dakota perf.
2. Mesa Verde: Run 2-1/16", 2.9#, J-55, EUE tubing with a SN (1.91" ID) on top of bottom joint. Land tubing approximately 25' above the bottom Point Lookout perforations.

 Gary Sizemore
Sr. Drilling Engineer

