

UNITED STATES
DEPARTMENT OF INTERIOR
BUREAU OF LAND MANAGEMENT

FORM APPROVED
Budget Bureau No 1004-0135
Expires March 31, 1993

SUNDRY NOTICE AND REPORTS ON WELLS

Do not use this form for proposals to drill or to deepen or reentry to a different reservoir. Use "APPLICATION TO DRILL" for permit for such proposals

Lease Designation and Serial No.

NMSE-078771

6. If Indian, Allottee or Tribe Name

7. If Unit or CA, Agreement Designation

Rosa Unit #14C

SUBMIT IN TRIPLICATE

1. Type of Well
Oil Well ☒ Gas Well ☐ Other ☐

8. Well Name and No
Rosa Unit #14C

2. Name of Operator
WILLIAMS PRODUCTION COMPANY

9. API Well No.
30-039-30132

3. Address and Telephone No.
PO Box 640 Aztec, NM 87410-0640

10. Field and Pool, or Exploratory Area
BLANCO MV/BASIN DK

4. Location of Well (Footage, Sec., T., R., M., or Survey Description)
2505' FNL & 895' FEL Sec 23, T31N, R6W NMPM

11. County or Parish, State
Rio Arriba, New Mexico

CHECK APPROPRIATE BOX(s) TO INDICATE NATURE OF NOTICE, REPORT, OR OTHER DATA

TYPE OF SUBMISSION

TYPE OF ACTION

Notice of Intent

☒ Subsequent Report

Final Abandonment

Abandonment
Recompletion
Plugging Back
Casing Repair
Altering Casing

☒ Other Multiple zone completion

Change of Plans
New Construction
Non-Routine Fracturing
Water Shut-Off
Conversion to Injection
Dispose Water
(Note: Report results of multiple completion on Well Completion or Recompletion Report and Log form)

13. Describe Proposed or Completed Operations (Clearly state all pertinent details, and give pertinent dates, including estimated date of starting any proposed work. If well is directionally drilled, give subsurface locations and measured and true vertical depths for all markers and zones pertinent to this work.)*

Williams Production Company, LLC. hereby requests authority to drill this as a Mesa Verde/Dakota dual as per attached plat and Operations plan.

RCVD AUG 23 '07

OIL CONS. DIV.

DIST. 3

HOLD 0104 FOR NSL in Dakota

14. I hereby certify that the foregoing is true and correct

Signed Larry Higgins
Larry Higgins

Title Drilling C.O.M.

Date 8-13-07

(This space for Federal or State office use)

Approved by [Signature]

Title Petr. Eng.

Date 8/22/07

Conditions of approval, if any:

Title 18 U.S.C. Section 1001, makes it a crime for any person knowingly and willfully to make to any department or agency of the United States any false, fictitious or fraudulent statements or representations as to any matter within its jurisdiction.

NMOCD

District I
1625 N French Dr., Hobbs, NM 88240

District II
1301 W Grand Avenue, Artesia, NM 88210

District III
1000 Rio Brazos Rd., Aztec, NM 87410

District IV
1220 S St Francis Dr., Santa Fe, NM 87505

State of New Mexico
Energy, Minerals & Natural Resources Department

OIL CONSERVATION DIVISION
1220 South St. Francis Dr.
Santa Fe, NM 87505

Form C-102

Revised October 12, 2005

Instructions on back

Submit to Appropriate District Office

State Lease - 4 Copies

Fee Lease - 3 Copies

RCVD AUG 23 '07

☐ AMENDED REPORT

OIL CONS. DIV.

DIST. 3

WELL LOCATION AND ACREAGE DEDICATION PLAT 30-039-30132

*API Number 30-039-30132	*Pool Code 72319 / 71599	*Pool Name BLANCO MESAVERDE / BASIN DAKOTA
*Property Code 17033	*Property Name ROSA UNIT	*Well Number 14C
*GRID No 120782	*Operator Name WILLIAMS PRODUCTION COMPANY	*Elevation 6275'

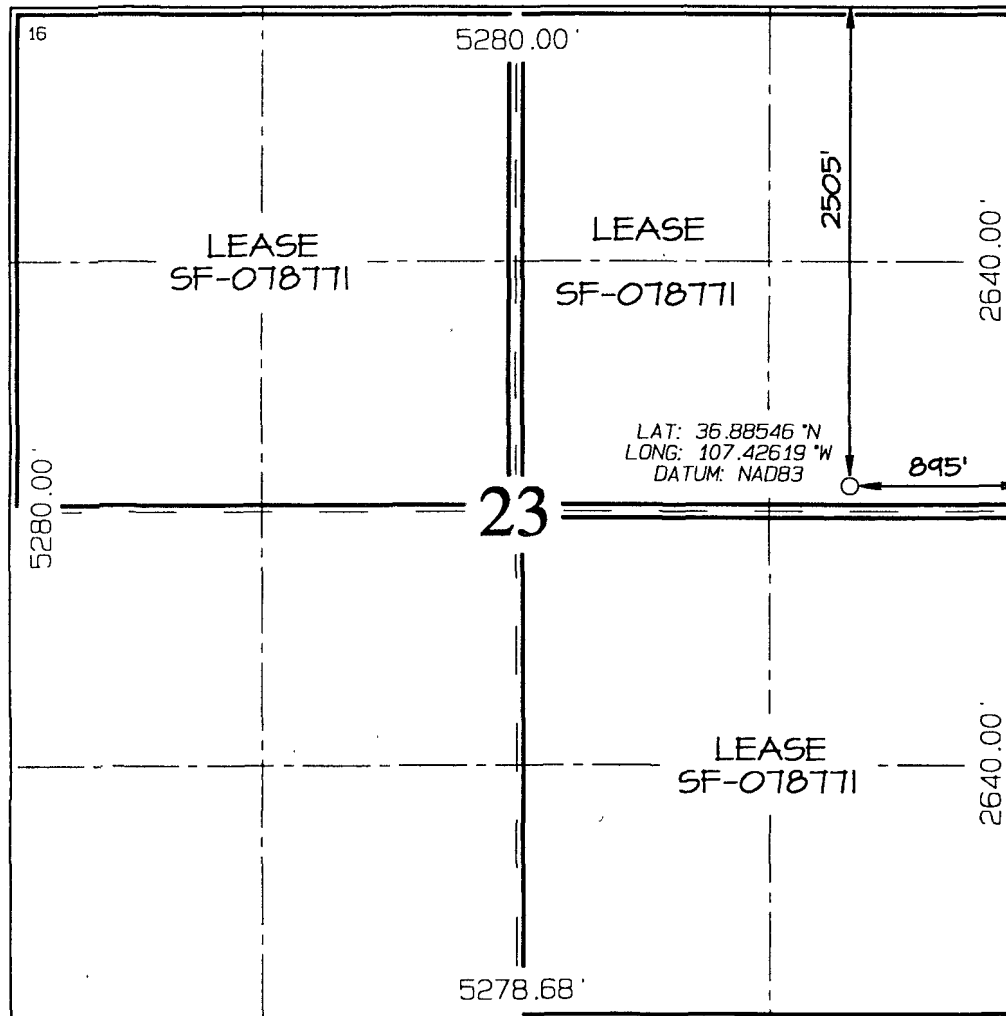
¹⁰ Surface Location

UL or lot no	Section	Township	Range	Lot Idn	Feet from the	North/South line	Feet from the	East/West line	County
H	23	31N	6W		2505	NORTH	895	EAST	RIO ARRIBA

¹¹ Bottom Hole Location If Different From Surface

UL or lot no	Section	Township	Range	Lot Idn	Feet from the	North/South line	Feet from the	East/West line	County
¹² Dedicated Acres 320.0 Acres (E/2) - MV 320.0 Acres (N/2) - DK					¹³ Joint or Infill		¹⁴ Consolidation Code		¹⁵ Order No.

NO ALLOWABLE WILL BE ASSIGNED TO THIS COMPLETION UNTIL ALL INTERESTS HAVE BEEN CONSOLIDATED
OR A NON-STANDARD UNIT HAS BEEN APPROVED BY THE DIVISION



¹⁷ OPERATOR CERTIFICATION

I hereby certify that the information contained herein is true and complete to the best of my knowledge and belief, and that this organization either owns a working interest or unleased mineral interest in the land including the proposed bottom-hole location or has a right to drill this well at this location pursuant to a contract with an owner of such a mineral or working interest, or to a voluntary pooling agreement or a compulsory pooling order heretofore entered by the division

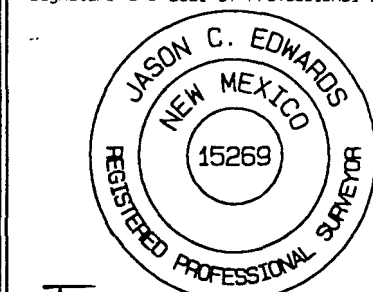
Signature: Larry Higgins Date: 8-13-07
Printed Name: LARRY HIGGINS

¹⁸ SURVEYOR CERTIFICATION

I hereby certify that the well location shown on this plat was plotted from field notes of actual surveys made by me or under my supervision, and that the same is true and correct to the best of my belief

Date Revised: JUNE 3, 2007
Date of Survey: APRIL 19, 2006

Signature and Seal of Professional Surveyor



Signature: JASON C. EDWARDS
Certificate Number: 15269



WILLIAMS PRODUCTION COMPANY

Operations Plan

(Note: This procedure will be adjusted on site based upon actual conditions)

DATE: 8/8/2007 **FIELD:** Basin DK/ BlancoMV
WELL NAME: Rosa #14C **SURFACE:** BLM
BH LOCATION: SENE Sec 23-31N-6W
Rio Arriba, NM **MINERALS:** BLM
ELEVATION: 6,275' GR **LEASE #** SF-078771
MEASURED DEPTH: 7,909'

I. GEOLOGY: Surface formation - San Jose

A. FORMATION TOPS: (KB)

Name	MD	Name	MD
Ojo Alamo	2,354	Menefee	5,344
Kirtland	2,469	Point Lookout	5,589
Fruitland	2,874	Mancos	5,879
Pictured Cliffs	3,124	Gallup	6,909
Lewis	3,409	Greenhorn	7,609
Cliff House	5,299	Graneros	7,664
		Dakota	7,794
		TD	7,909

B. MUD LOGGING PROGRAM: Mudlogger on location at 100' above Gallup SS to TD. Mud logger to pick TD.

C. LOGGING PROGRAM: HRI from surface casing to TD. SDL\DSN\DSN over zones of interest.

D. NATURAL GAUGES: Gauge any noticeable increases in gas flow. Record all gauges in Tour book and on morning reports.

II. DRILLING

A. MUD PROGRAM: Clear water with benex to 7-5/8" casing point. Convert to a LSND mud to log and run pipe. Treat for lost circulation as necessary. Obtain 100% returns prior to cementing. Notify Engineering of any mud losses. Use air w/Air Hammer from 7-5/8in. csg.to TD.

B. BOP TESTING: While drill pipe is in use, the pipe rams and the blind rams will be function tested once each trip. The anticipated reservoir is expected to be less than 1300 psi, so the BOPE will be tested to **250 psi (Low) for 5 minutes** and **1500 psi (High) for 10 minutes**. Utilize a BOPE Testing Unit with a recording chart and appropriate test plug for testing. The drum brakes will be inspected and tested each tour. **All tests and inspections will be recorded in the tour book as to time and results.**

III. MATERIALS**A. CASING PROGRAM:**

CASING TYPE	OH SIZE (IN)	DEPTH (MD) (FT)	CASING SIZE (IN)	WEIGHT(LB)	GRADE
Surface	14 3/4	300	10 3/4	40.5	K-55
Intermediate	9 7/8	3,599	7 5/8	26.4	K-55
Longstring	6 3/4	7,909	5 1/2	17	N-80

B. FLOAT EQUIPMENT:

- SURFACE CASING:** 10 3/4" notched regular pattern guide shoe. Run (1) standard centralizer on each of the bottom (4) joints of Surface Casing.
- INTERMEDIATE CASING:** 7 5/8" cement nose guide shoe with a self-fill insert float. Place float collar one joint above the shoe. Install (1) Turbulent centralizer on each of the bottom (3) joints and one standard centralizer every (3) joints to 2,500 ft. Run (1) Turbulent centralizer at 2,700 ft., 2,500 ft., 2,300ft., 2,000ft., 1,500 ft., and 1,000 ft. (NTL-FRA 90-1).
- PRODUCTION LINER / CASING:** 5-1/2" whirler type cement nose guide shoe with a latch collar on top of 20' bottom joint. Place marker joint above 5,400'. Place centralizers as needed across selected production intervals.

C. CEMENTING:

(Note: Volumes may be adjusted onsite due to actual conditions)

- SURFACE:** Slurry: 255sx (356 cu.ft.) of "Type III" + 2% CaCl₂ + ¼ # of cello-flake/sk (Yield = 1.39 cu.ft./sk, Weight = 14.5 #/gal.). The 100% excess should circulate cement to the surface. WOC 12 hours. Test csg to 1500psi.
- INTERMEDIATE:** Lead - 610 sx (1,268) cu.ft.) of "Premium Light with 8% gel and 1/4# cello-flake/sk (Yield = 2.09 cu.ft./sk, Weight = 12.1 #/gal.). Tail - 100 sx (139cu.ft.) of "Type III" with 1/4# cello-flake/sk, (Yield = 1.4 cu.ft./sk, Weight = 14.5#/gal.). Use **100% excess in Lead Slurry** to circulate to surface. **No excess in Tail Slurry.** Total volume = 1,407 cu.ft. Bump Plug to 1,500 psi. Notify engineering if cement is not circulated to surface.
- PRODUCTION CASING:** 10 bbl Gelled Water space. Cement: 210 sx (442 ft³) of Premium Light HS + 1% FL-52 + .2% CD-32, 0.1% R-3, 3 #/sk CSE, ¼ #/sk cello flake and 4% Phenoseal. (Yield = 2.15 ft³/sk, Weight = 12.3 #/gal.). Displace cement at a minimum of 8 BPM. The 20% excess in slurry should cover 100 ft into intermediate casing. Total volume 442ft³. WOC 12 hours

IV. IV COMPLETION**A. CBL**

- Run Cement Bond Log across all intervals to be perforated and find Top of Cement behind all casing strings if cement not circulated to surface..

B. PRESSURE TEST

- Pressure test 5-1/2" casing to 6000 psi max, hold at 1500 psi for 30 minutes.

C. STIMULATION

1. Stimulate Dakota with approximately 10,000# of LiteProp 108™ sand in slick water..
2. Isolate Dakota with a RBP.
3. Stimulate Point Lookout with approximately 9300# of 14/30 LiteProp™ in slick water.
4. Isolate Point Lookout with a RBP.
5. Perforate the Menefee/Cliff House as determined from the open hole logs.
6. Stimulate with approximately 9300# of 14/30 LiteProp™ in slick water.
7. Test each zone before removing bridge plugs.

D. RUNNING TUBING

1. Dakota: Run 2-1/16", 3.25#, J-55, IJ tubing with 1/2 mule shoe on bottom, SN with pump-out plug on top of adeem joint and 5 Seal Units. Land tubing approximately 100' below top Dakota perf.
2. Mesa Verde: Run 2-1/16", 2.9#, J-55, EUE tubing with a SN (1.91" ID) on top of bottom joint. Land tubing approximately 25' above the bottom Point Lookout perforations.

for Gary Sizemore
Sr. Drilling Engineer

Larry Higgins