

District I

1625 N. French Dr., Hobbs, NM 88240

District II

1301 W. Grand Avenue, Artesia, NM 88210

District III

1000 Rio Brazos Rd., Aztec, NM 87410

District IV

1220 S. St. Francis Dr., Santa Fe, NM 87505

State of New Mexico

Energy, Minerals & Natural Resources Department

OIL CONSERVATION DIVISION

1220 South St. Francis Dr.

Santa Fe, NM 87505

ACTUAL - AS DRILLED

Form C-102

Revised October 12, 2005

Submit to Appropriate District Office

State Lease - 4 Copies

Fee Lease - 3 Copies

RCVD SEP 5 '07

☒ AMENDED REPORT

WELL LOCATION AND ACREAGE DEDICATION PLAT

OIL CONS. DIV.

¹ API Number 30-039-29968	² Pool Code 72400	³ Pool Name East Blanco Pictured Cliffs	DIST. 3
⁴ Property Code 35770	⁵ Property Name MANY CANYONS 30-04-12		⁶ Well Number 124
⁷ OGRID No. 013925	⁸ Operator Name Black Hills Gas Resources, Inc.		⁹ Elevation 7028' GL

¹⁰ Surface Location

UL or lot no.	Section	Township	Range	Lot Idn	Feet from the	North/South line	Feet from the	East/West line	County
H	12	30-N	4-W		2535'	NORTH	135'	EAST	Rio Arriba

¹¹ Bottom Hole Location If Different From Surface

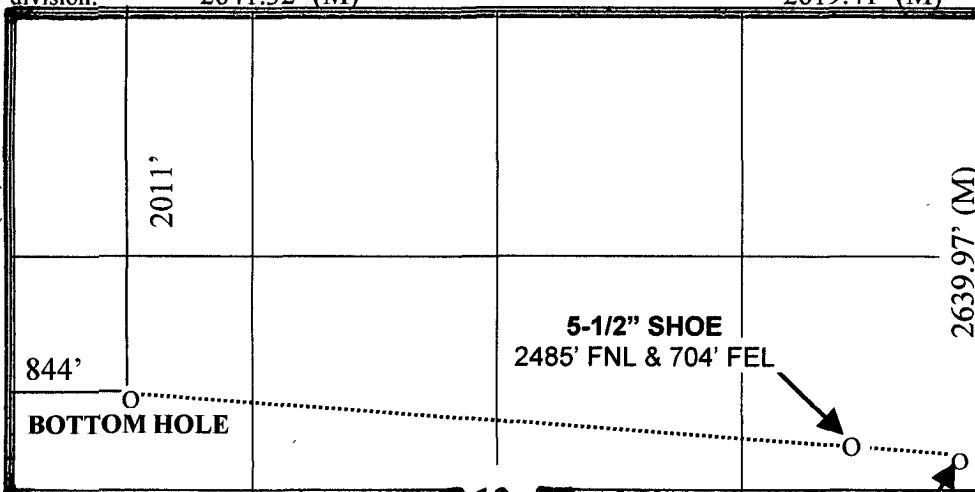
UL or lot no.	Section	Township	Range	Lot Idn	Feet from the	North/South line	Feet from the	East/West line	County
E	12	30N	4-W		2011'	NORTH	844'	WEST	Rio Arriba

¹² Dedicated Acres 318.93 - N/2	¹³ Joint or Infill	¹⁴ Consolidation Code	¹⁵ Order No.
-----------------------------------------------	-------------------------------	----------------------------------	-------------------------

No allowable will be assigned to this completion until all interests have been consolidated or a non-standard unit has been approved by the division.

2641.32' (M)

2619.41' (M)

¹⁷ OPERATOR CERTIFICATION

I hereby certify that the information contained herein is true and complete to the best of my knowledge and belief, and that this organization either owns a working interest or unleased mineral interest in the land including the proposed bottom hole location or has a right to drill this well at this location pursuant to a contract with an owner of such a mineral or working interest, or to a voluntary pooling agreement or a compulsory pooling order heretofore entered by the division.

Signature: Mike Pippin Date: 9/3/07

Mike Pippin
Printed Name

¹⁸ SURVEYOR CERTIFICATION

I hereby certify that the well location shown on this plat was plotted from field notes of actual surveys made by me or under my supervision, and that the same is true and correct to the best of my belief.

8/30/06

Date of Survey

Signature and Seal of Professional Surveyor:

Roy Rush

8894

Certificate Number

HOLD ON FOR NSL