

UNITED STATES
DEPARTMENT OF THE INTERIOR
BUREAU OF LAND MANAGEMENT

Sundry Notices and Reports on Wells

1. Type of Well
GAS

2. Name of Operator
Burlington Resources

3. Address & Phone No. of Operator

PO Box 4289, Farmington, NM 87499 (505) 326-9700

4. Location of Well, Footage, Sec., T, R, M

Surf: Unit G (SWNE), 1595' FNL & 1860' FEL, Section 8, T27N, R5W, NMPM
BH: Unit H (SENE), 1675' FNL & 1015' FEL, Section 8, T27N, R5W, NMPM

RECEIVED

SEP 10 2007

Bureau of Land Management
Farmington Field Office

5. Lease Number
USA SF-079391
6. If Indian, All. or
Tribe Name

7. Unit Agreement Name
San Juan 27-5 Unit

8. Well Name & Number
San Juan 27-5 Unit #907

9. API Well No.

30-039- 30302

10. Field and Pool

Blanco MV/Basin DK

11. County and State
Rio Arriba Co., NM

12. CHECK APPROPRIATE BOX TO INDICATE NATURE OF NOTICE, REPORT, OTHER DATA

Type of Submission

☒ Notice of Intent

☐ Subsequent Report

☐ Final Abandonment

Type of Action

☐ Abandonment

☐ Plugging

☐ Casing Repair

☐ Altering Casing

☒ Change of Plans

☐ Non-Routine Fracturing

☐ Water Shut off

☐ Conversion to Injection

☒ Other - Change location

13. Describe Proposed or Completed Operations

Want to move the surface location. Move from Surf: Unit G (SWNE), 1595' FNL & 1860' FEL, Section 8, T27N, R5W to Unit G (SWNE), 1699' FNL & 1865' FEL, Section 8, T27N, R5W.

Attached is a new C-102, TOPO, and cut & fill.

RCVD SEP 25 '07

OIL CONS. DIV.

DIST. 3

14. I hereby certify that the foregoing is true and correct.

Signed Rhonda Rogers Rhonda Rogers Title Regulatory Technician Date 9/10/07

(This space for Federal or State Office use)

APPROVED BY [Signature] Title ATM

Date 9/29/07

CONDITION OF APPROVAL, if any:

Title 18 U.S.C. Section 1001, makes it a crime for any person knowingly and willfully to make any department or agency of the United States any false, fictitious or fraudulent statements or representations as to any matter within its jurisdiction.

NO. 0104 FOR directional survey
AS drilled plat (C-102 form)
pilot test heading order

NMOCD

8

DISTRICT I
1625 N. French Dr., Hobbs, N.M. 88240

DISTRICT II
1301 W. Grand Avenue, Artesia, N.M. 88210

DISTRICT III
1000 Rio Brazos Rd., Aztec, N.M. 87410

DISTRICT IV
1220 S. St. Francis Dr., Santa Fe, N.M. 87505

State of New Mexico
Energy, Minerals & Natural Resources Department

OIL CONSERVATION DIVISION
1220 South St. Francis Dr.
Santa Fe, N.M. 87505

Form C-102
Revised October 12, 2005
Submit to Appropriate District Office
State Lease - 4 Copies
Fee Lease - 3 Copies

☐ AMENDED REPORT

WELL LOCATION AND ACREAGE DEDICATION PLAT

*API Number 30-039		*Pool Code 72319/71599	*Pool Name DAKOTA / MESA VERDE
*Property Code 7454	*Property Name SAN JUAN 27-5 UNIT		*Well Number 907
*OGRID No. 14538	*Operator Name BURLINGTON RESOURCES OIL & GAS COMPANY LP.		*Elevation 6625

¹⁰ Surface Location

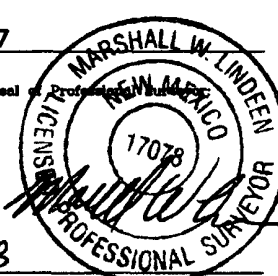
UL or lot no.	Section	Township	Range	Lot Idn	Feet from the	North/South line	Feet from the	East/West line	County
G	8	27 N	5 W		1699	NORTH	1865	EAST	RIO ARRIBA

¹¹ Bottom Hole Location If Different From Surface

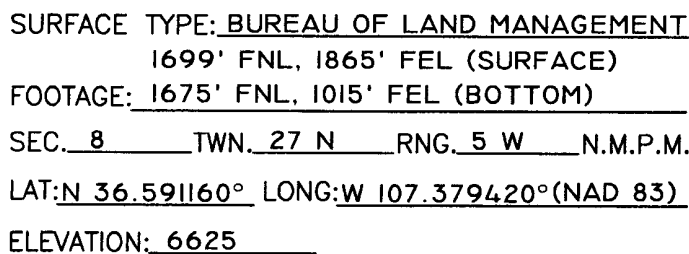
UL or lot no.	Section	Township	Range	Lot Idn	Feet from the	North/South line	Feet from the	East/West line	County
H	8	27 N	5 W		1675	NORTH	1015	EAST	RIO ARRIBA

¹² Dedicated Acres 320 (E/2)	¹³ Joint or Infill	¹⁴ Consolidation Code	¹⁵ Order No.
--	-------------------------------	----------------------------------	-------------------------

NO ALLOWABLE WILL BE ASSIGNED TO THIS COMPLETION UNTIL ALL INTERESTS HAVE BEEN CONSOLIDATED
OR A NON-STANDARD UNIT HAS BEEN APPROVED BY THE DIVISION

18 S 88°47'03" E 2646.33' N 0°23'21" W NAD 83 LAT: 36.591160° N LONG: 107.379420° W NAD 27 LAT: 36° 35.4691' N LONG: 107° 22.7291' W		5208.18' 1699' 1675' 1865' 1015' SECTION 8		17 OPERATOR CERTIFICATION I hereby certify that the information contained herein is true and complete to the best of my knowledge and belief, and that this organization either owns a working interest or unleased mineral interest in the land including the proposed bottom hole location or has a right to drill this well at this location pursuant to a contract with an owner of such a mineral or working interest, or to a voluntary pooling agreement or a compulsory pooling order heretofore entered by the division. Signature: <i>Rhonda Rogers</i> 9-10-07 Date: 9-10-07 Printed Name: Rhonda Rogers	
2616.10' N 0°35'07" W N 78°52'24" W 2690.16'		NAD 83 LAT: 36.591171° N LONG: 107.376525° W NAD 27 LAT: 36° 35.4697' N LONG: 107° 22.5554' W USA SF-079391		18 SURVEYOR CERTIFICATION I hereby certify that the well location shown on this plat was plotted from field notes of actual surveys made by me or under my supervision, and that the same is true and correct to the best of my belief. 8/02/07 Date of Survey Signature and Seal of Professional Surveyor 17078 Certificate Number 	

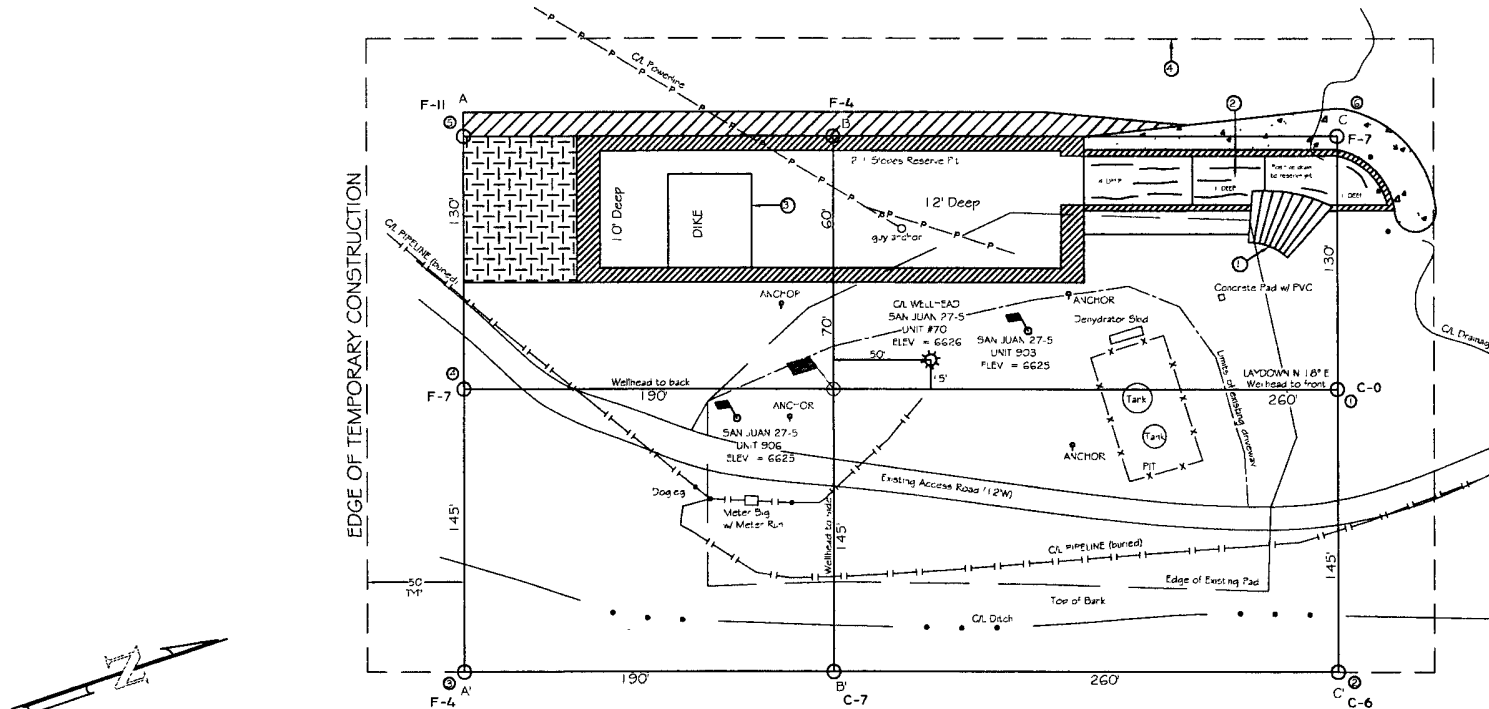
1669' SAN JUAN 27-5 UNIT 907
1699' FNL & 1865' FEL (SURFACE)
1675' FNL & 1015' FEL (BOTTOM)
SECTION 8, T-27-N, R-15-W, N-M, P-M
RIO ARRIBA COUNTY, NEW MEXICO



FILE NAME: 7698T02

P.O. BOX 3651
FARMINGTON, NM 87499
OFFICE: (505) 334-0408

BURLINGTON RESOURCES OIL & GAS COMPANY LP.
 SAN JUAN 27-5 UNIT 907 - 1699' FNL & 1865' FEL (SURFACE) - 1675' FNL & 1015' FEL (BOTTOM)
 SECTION 8, T-27-N, R-5-W, N.M.P.M., RIO ARriba COUNTY, N.M.
 GROUND ELEVATION: 6625 - DATE: MAY 15, 2007



EXISTING DISTURBANCE = 1.13 ACRES
 WELLPAD = 1.71 ACRES
 TEMPORARY CONSTRUCTION = 1.26 ACRES
 TOTAL = 4.10 ACRES


LATITUDE 36°35'46.91" N LONGITUDE 107°22'22.91" W NAD 27

PAD CONST. SPECS

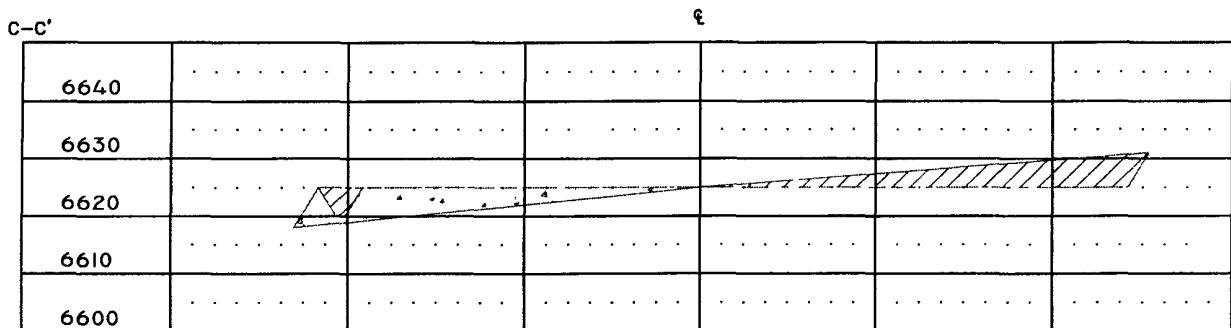
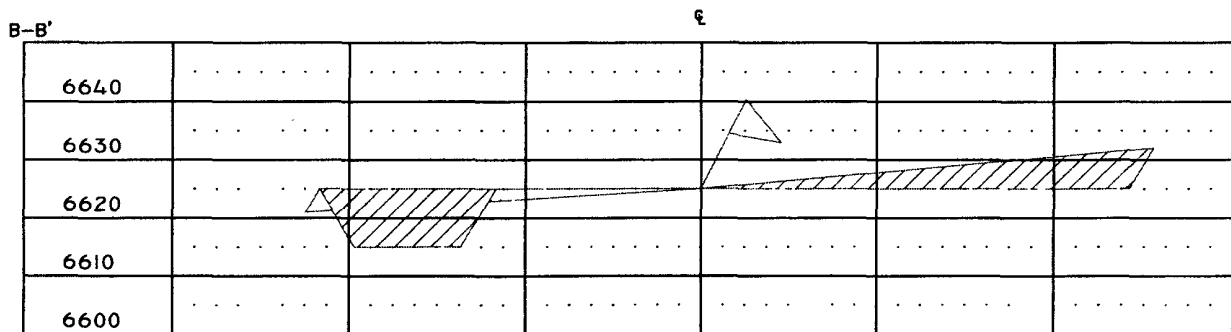
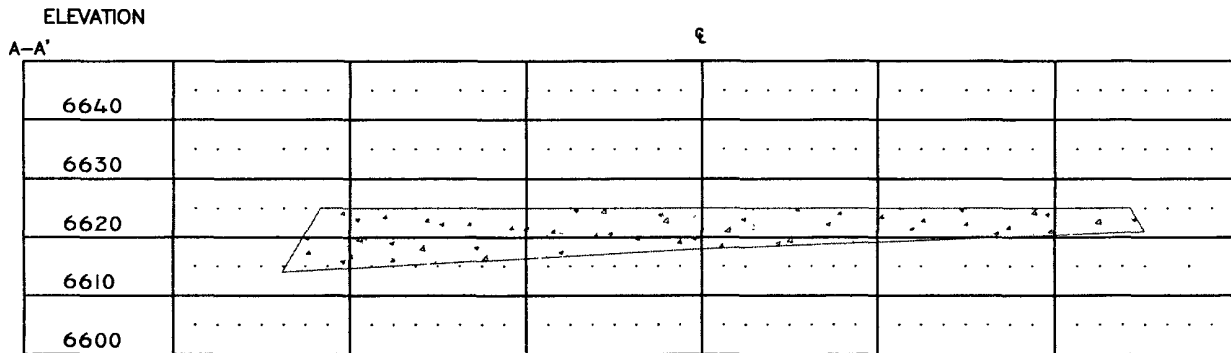
- 1) RAMP INTO PIT CONSTRUCTED FROM PAD GRADE INTO FLARE AREA AT 5% SLOPE
- 2) APPROXIMATE 1.34/75' PIT AREA LINED WITH 1/2 MIL POLYMER
- 3) RESERVE PIT DIKE TO BE 6" ABOVE DEEP SIDE (OVERFLOW) 3' WIDE AND 1' ABOVE SHALLOW SIDE
- 4) EDGE OF TEMPORARY CONSTRUCTION DEFINED IN FIELD W/ T-POST

NOTES

- 1) CONTRACTOR SHOULD CALL "ONE-CALL" FOR LOCATION OF ANY MARKED OR UNMARKED BURIED PIPELINES OR CABLES ON WELLPAD AND OR ACCESS ROAD AT LEAST TWO (2) WORKING DAYS PRIOR TO CONST
- 2) UNITED FIELD SERVICES, INC IS NOT LIABLE FOR UNDERGROUND UTILITIES OR PIPELINES

SURVEYED: 5/15/07	REV. DATE: 8/17/07	APP. BY: M.W.L.
DRAWN BY: H.S.	DATE DRAWN: 8/18/07	FILE NAME: 7698L02
 P.O. BOX 3651 FARMINGTON, NM 87409 OFFICE: (505)334-0408		

BURLINGTON RESOURCES OIL & GAS COMPANY LP.
SAN JUAN 27-5 UNIT 907 - 1699' FNL & 1865' FEL (SURFACE)
1675' FNL & 1015' FEL (BOTTOM)
SECTION 8, T-27-N, R-5-W, N.M.P.M., RIO ARriba COUNTY, N.M.
GROUND ELEVATION: 6625 - DATE: MAY 15, 2007



1" = 60' - HORIZ.
1" = 30' - VERT.

NOTES:

- 1.) CONTRACTOR SHOULD CALL "ONE-CALL" FOR LOCATION OF ANY MARKED OR UNMARKED BURIED PIPELINES OR CABLES ON WELLPAD AND OR ACCESS ROAD AT LEAST TWO (2) WORKING DAYS PRIOR TO CONST.
- 2.) UNITED FIELD SERVICES, INC. IS NOT LIABLE FOR UNDERGROUND UTILITIES OR PIPELINES.

SURVEYED: 5/15/07

REV. DATE: 8/17/07

APP. BY M.W.L.

DRAWN BY: H.S.

DATE DRAWN: 6/19/07

FILE NAME: 7698C02



P.O. BOX 3651
FARMINGTON, NM 87499
OFFICE: (505)334-0408

BURLINGTON RESOURCES OIL & GAS COMPANY LP.

SAN JUAN 27-5 UNIT 907

1699' FNL & 1865' FEL (SURFACE)

1675' FNL & 1015' FEL (BOTTOM)

SECTION 8, T-27-N, R-5-W, N.M.P.M.

RIO ARRIBA COUNTY, NEW MEXICO

FROM THE U.S. POST OFFICE ZIP CODE 87412 LOCATED AT MILE POST 73.7
ON U.S. HIGHWAY 64 IN BLANCO, NEW MEXICO.

PROCEED EASTERLY 27.4 MILES ON U.S. HIGHWAY 64
TO A WELL RIG ROAD TO THE RIGHT AT MILE POST 101.1.

TURN RIGHT ONTO THE RIG ROAD.

PROCEED SOUTHERLY 1.1 MILES TO A "Y" INTERSECTION,
STAY TO THE RIGHT.

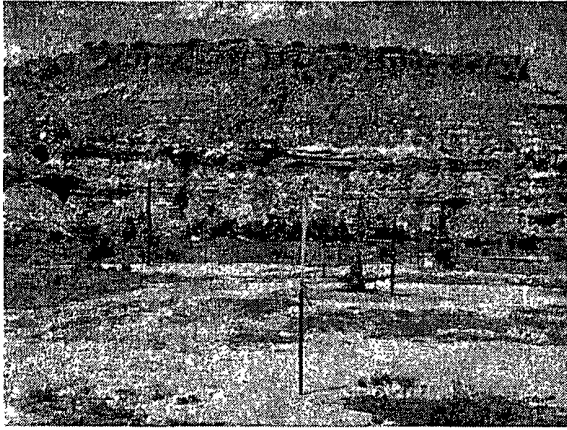
PROCEED 3.4 MILES TO A FOUR WAY INTERSECTION; CONTINUE FORWARD.

PROCEED 1.1 MILES TO A RIG ROAD INTERSECTION; STAY TO THE LEFT.

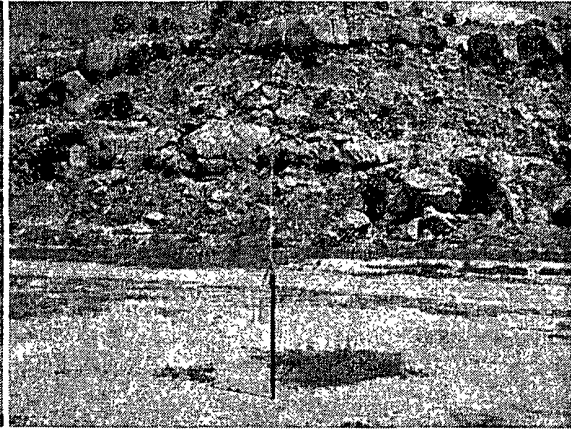
PROCEED TOWARDS "TWIN PEAKS" 1.6 MILES
TO A CATTLE GUARD WITH A SIGN MARKING THE ENTRANCE TO
"CARRIZO RANCH" AT SANTOS PEAK.

FROM THE CATTLE GUARD PROCEED SOUTHERLY 0.8 MILE
TO A RIG ROAD TO THE LEFT,
TURN LEFT AND PROCEED EASTERLY 0.2 MILE TO THE WELL SITE.

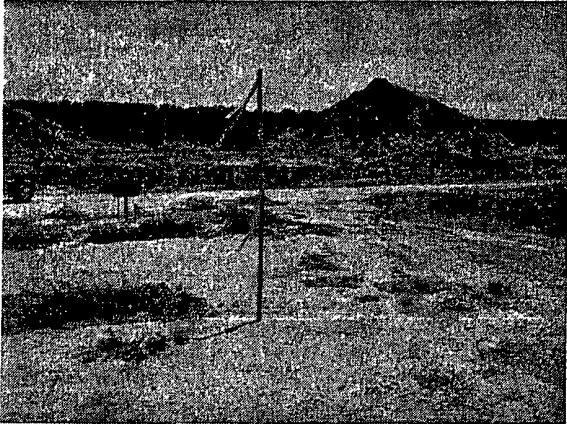
BURLINGTON RESOURCES OIL & GAS COMPANY LP.
SAN JUAN 27-5 UNIT 907
1699' FNL & 1865' FEL (Surface), 1675' FNL & 1015' FEL (Bottom)
Section 8, T-27-N, R-5-W, N.M.P.M., Rio Arriba County, NM.



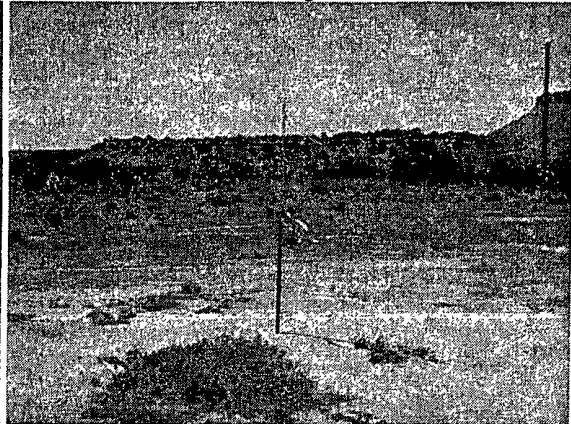
Looking North



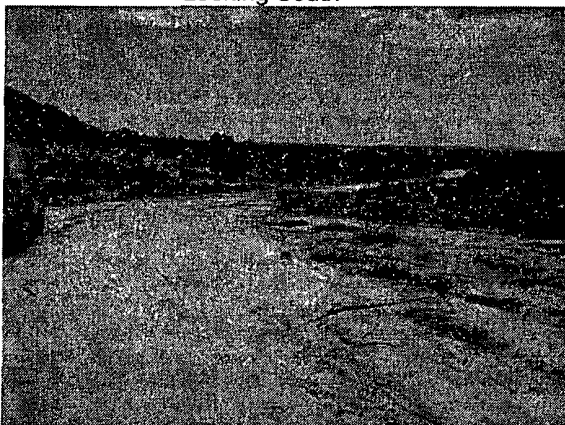
Looking East



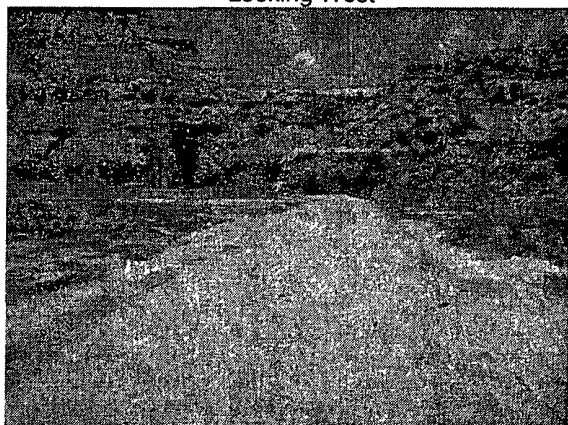
Looking South



Looking West



Access at Well Location



Access at Road