

District I
PO Box 1980, Hobbs NM 88241-1980
District II
PO Drawer KK, Artesia, NM 87211-0719
District III
1000 Rio Brazos Rd., Aztec, NM 87410
District IV
PO Box 2088, Santa Fe, NM 87504-2088

State of New Mexico
Energy, Minerals & Natural Resources Department

OIL CONSERVATION DIVISION
PO Box 2088
Santa Fe, NM 87504-2088

Form C-102
Revised February 21, 1994

Instructions on back
Submit to Appropriate District Office
State Lease - 4 Copies
Fee Lease - 3 Copies

☐ AMENDED REPORT

WELL LOCATION AND ACREAGE DEDICATION PLAT

¹ API Number 30-045-34325	² Pool Code 71599/72319	³ Pool Name Basin Dakota / Blanco Mesaverte
⁴ Property Code 19641	⁵ Property Name NEBU	⁶ Well Number 344
⁷ DECID No 6137	⁸ Operator Name Devon Energy Production Company, L.P.	⁹ Elevation 6319

¹⁰ Surface Location

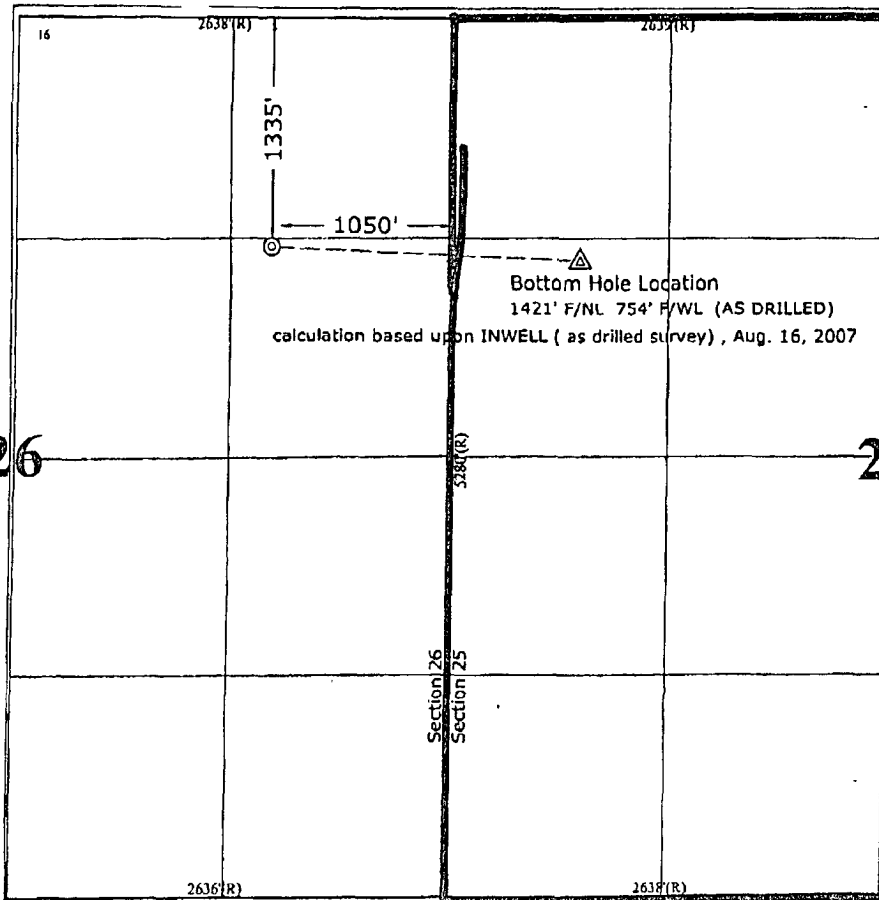
UL or Lot No.	Section	Township	Range	Lot Idn	Feet from the	North/South line	Feet from the	East/West line	County
H	26	31 N	7 W		1335	NORTH	1050	EAST	SAN JUAN

¹¹ Bottom Hole Location If Different From Surface

UL or lot no	Section	Township	Range	Lot Idn	Feet from the	North/South line	Feet from the	East/West line	County
E	25	31 N	7 W		1421	NORTH	754	WEST	SAN JUAN

¹² Dedicated Acres 10 1/2 - 320	¹³ Joint or Infill	¹⁴ Consolidation Code	¹⁵ Order No.
---	-------------------------------	----------------------------------	-------------------------

NO ALLOWABLE WILL BE ASSIGNED TO THIS COMPLETION UNTIL ALL INTERESTS HAVE BEEN CONSOLIDATED
OR A NON-STANDARD UNIT HAS BEEN APPROVED BY THE DIVISION



¹⁷ OPERATOR CERTIFICATION

I hereby certify that the information contained herein is true and complete to the best of my knowledge and belief

Signature
Melisa S. Carter
Printed Name
Melisa S. Carter
Title
Operations Technician
Date
October 2, 2007

¹⁸ SURVEYOR CERTIFICATION

I hereby certify that the well location shown on this plat was plotted from field notes of actual surveys made by me or under my supervision, and that the same is true and correct to the best of my belief

as drilled- Sept. 21, 2007
July 30, 2006

Date of Survey
Signature and Seal of Registered Professional Land Surveyor

GARY VANN
NEW MEXICO
REGISTERED PROFESSIONAL LAND SURVEYOR
7016
Certificate Number

(R) - CLO Record

09/21/2007 10:17AM (GMT-05:00)