

UNITED STATES  
DEPARTMENT OF INTERIOR  
BUREAU OF LAND MANAGEMENT

FORM APPROVED  
Budget Bureau No. 1004-0135  
Expires: March 31, 1993

SUNDRY NOTICE AND REPORTS ON WELLS

Do not use this form for proposals to drill or to deepen or reentry to a different reservoir. Use "APPLICATION TO DRILL" for permit for such proposals

5. Lease Designation and Serial No.  
SF - 078889

6. If Indian, Allottee or Tribe Name

7. If Unit or CA, Agreement Designation

SUBMIT IN TRIPLICATE

RECEIVED

OCT 18 2007

1. Type of Well  
Oil Well ☒ Gas Well ☐ Other ☐

8. Well Name and No.  
ROSA UNIT #43

2. Name of Operator  
WILLIAMS PRODUCTION COMPANY

Bureau of Land Management  
Farmington Field Office

9. API Well No.  
30-039-07954

3. Address and Telephone No.  
PO BOX 3102 MS 25-4, TULSA, OK 74101 (918) 573-3046

10. Field and Pool, or Exploratory Area  
BASIN DAKOTA

4. Location of Well (Footage, Sec., T., R., M., or Survey Description)  
1550' FSL & 1590' FEL SEC. 19, T-31N, R04W

11. County or Parish, State  
RIO ARRIBA, NM

CHECK APPROPRIATE BOX(s) TO INDICATE NATURE OF NOTICE, REPORT, OR OTHER DATA

TYPE OF SUBMISSION

TYPE OF ACTION

☒ Notice of Intent

☐ Subsequent Report

☐ Final Abandonment

Abandonment  
Recompletion  
Plugging Back  
Casing Repair  
Altering Casing  
☒ Other ACID JOB

Change of Plans  
New Construction  
Non-Routine Fracturing  
Water Shut-Off  
Conversion to Injection  
Dispose Water  
(Note: Report results of multiple completion on Well Completion or Recompletion Report and Log form.)

13. Describe Proposed or Completed Operations (Clearly state all pertinent details, and give pertinent dates, including estimated date of starting any proposed work. If well is directionally drilled, give subsurface locations and measured and true vertical depths for all markers and zones pertinent to this work.)\*

Objective: Clear tubing plug & replace tubing, cleanout possible fill in rathole, RTP.

- 1) MIRU, kill, ND tree, & NU BOP's.
- 2) RIH with tubing.
- 3) Clean out fill to PBTD.
- 4) POOH w/tubing and lay down.
- 5) Perforate.
- 6) RIH w/new tubing on packer.
- 7) Acidize.
- 8) Flowback acid.
- 9) POOH w/packer.
- 10) RIH and hangoff tubing at 8,225'.
- 11) ND BOP's & NU tree.
- 12) Release rig.
- 13) Return to production.

RCVD OCT 19 '07

OIL CONS. DIV.  
DIST. 3

14. I hereby certify that the foregoing is true and correct

Signed

*Rachel Lippert*  
Rachel Lippert

Title Engineering Tech

Date October 17, 2007

(This space for Federal or State office use)

Approved by

**Original Signed: Stephen Mason**

Title

Date

**OCT 18 2007**

Conditions of approval, if any.

Title 18 U.S.C. Section 1001, makes it a crime for any person knowingly and willfully to make to any department or agency of the United States any false, fictitious or fraudulent statements or representations as to any matter within its jurisdiction.

NMOC



EXPLORATION & PRODUCTION

## **ACID JOB**

**ROSA UNIT 43 DK**

**RIO ARRIBA, NM**

**OCTOBER 2007**

### **WELLBORE STATUS:**

PBTD 8,285' MD

2-3/8", 4.7 #/FT, 8- RD J-55 To 8,251' MD---PACKERLESS

ESTIMATED SIBHP = 850± PSIG

ESTIMATED SIBHT = 188± °F

**OBJECTIVE:** Clear tubing plug & replace tubing, cleanout possible fill in rathole, RTP.

1. MIRU, kill, ND tree, & NU BOP's.
2. RIH with tubing.
3. Clean out fill to PBTD.
4. POOH w/tubing and lay down.
5. Perforate
6. RIH w/new tubing on packer
7. Acidize
8. Flowback acid
9. POOH w/packer
10. RIH and hangoff tubing at 8,225'.
11. ND BOP's & NU tree.
12. Release rig.
13. Return to production.

### **PRIOR TO PRIMARY JOB**

- 1) Acquire several joints of 2-3/8" eue 8rd for use to lengthen string and make initial cleanout or acquire crossover to 2-7/8".
- 2) Acquire 8,150 ft of 2-7/8" 6.5 #/ft J-55 eue 8rd tubing.

- 3) Acquire 300 ft of 2-7/8" 6.4# J-55 10rd tubing with x/over to 8rd tubing **and turned down collars.**
- 4) Acquire 2-7/8" 10 rd threaded **2.3" minimum I.D. X or XN** type nipple (or 8rd and xover).
- 5) Acquire new wellhead.
- 6) Test rig anchors.
- 7) Verify location is OK for rig operations.
- 8) Ensure JSA, ECP's and lockout procedures are in place for the flowline and other energized piping or equipment.

### **SAFETY NOTICE**

PERSONNEL SAFETY IS THE NUMBER ONE JOB.  
NO EXCEPTIONS!!!

### **PROCEDURE:**

**Note:** A safety meeting shall be held each morning before work and subsequent "tailgate" safety meetings are to be held during the day when operation objectives shift in nature and intent (i.e. beginning/ending fishing operations, squeeze jobs, rigging down, etc.)

1. Spot equipment, MIRU.
2. Blow down gas on well as possible to kill.
3. Pump into both tubing string and backside to load well with filtered FLSW + 2% KCl as necessary to kill well.

**Note:** Steps 2 & 3 are to be performed each day before work begins and as necessary throughout the workday (with expected departure(s) when tubing is out of the hole).

4. ND tree and NU BOP's (blind & pipe rams).
5. Test BOP's for operation and have shop test report for pressure on location.

**Note:** Step 5 is to be performed each time BOP stack is nipped up.

6. Tie into top of tubing and RIH cleaning out to 8,275' +/-.
7. POOH laying down tubing.

**SPECIAL NOTE:** This pipe was run September 2007 and is supposed to be new pipe. If this is not new pipe immediately inform Tulsa Engineer and order a work string to acidize through.

8. R/U electric line and make correlation run with gamma ray/collar tool and CBL.

**Note:** On GR/CL, maximize sensitivity on collar locator to "see" perforations to aid in correlation..

9. Run CBL to determine competent TOC and report depth to TOC to Tulsa engineer. The TOC + 200 ft may be used to determine packer depth in step # 12 below.
10. After correlating, RIH with electric line and perforate 6 SPF deep penetrating charges in hollow steel carrier from 8,164'-8,178'; 8,203'-8,220'; 8,242'-8,251'; 8,259'-8,267'.

**Note:** This well should be dead and the BOP's shall be closed and locked at the end of daily operations.

11. POOH and lay down electric line equipment.
12. Pick up packer and production tubing and RIH set packer at 8,100' (If CBL shows TOC significantly above 8,100', then set packer at TOC + 200'.
13. Acidize well according to BJ guidelines with a nitrified acid job diverted with rock salt.
14. After acidizing, flowback well overnight until it cleans up (or stops flowing) with a pH of 5.5 or higher.
15. POOH and lay down packer.
16. RIH with completion string (nipple on bottom 10rd 6.4 # tubing on above to 8,000' MD (225' +/- on bottom) and then top of string to surface 6.5# 8rd tubing) and circulate out to plug back TD at 8,285'.
17. After returns clean up, PU to 8,215-8,230' and hang off tubing.

**ATTENTION**

Only use pipe dope on the pins. **Do not dope the couplings.** If pipe dope gets on the exterior of the couplings or the pipe it should be wiped clean from the pipe or coupling. Do not use excess pipe dope and only dope the threads on the pins.

**Note:** Install **2.3" minimum ID X or XN nipple** either on bottom.

18. N/D BOP's and N/U wellhead.
19. Test the well by wireline tagging (confirmed with EOT locator only), swabbing or flowing well from tubing to make certain the tubing is not plugged prior to releasing the rig.
20. If tubing is not plugged, release rig. If tubing is plugged contact Tulsa Engineer immediately.
21. R/D, move off location.
22. Return well to production.

**DO NOT RELEASE THE RIG FROM LOCATION UNTIL IT HAS BEEN  
CONFIRMED THAT THE TUBING IS CLEAR.**

ROSA UNIT #43  
DAKOTA

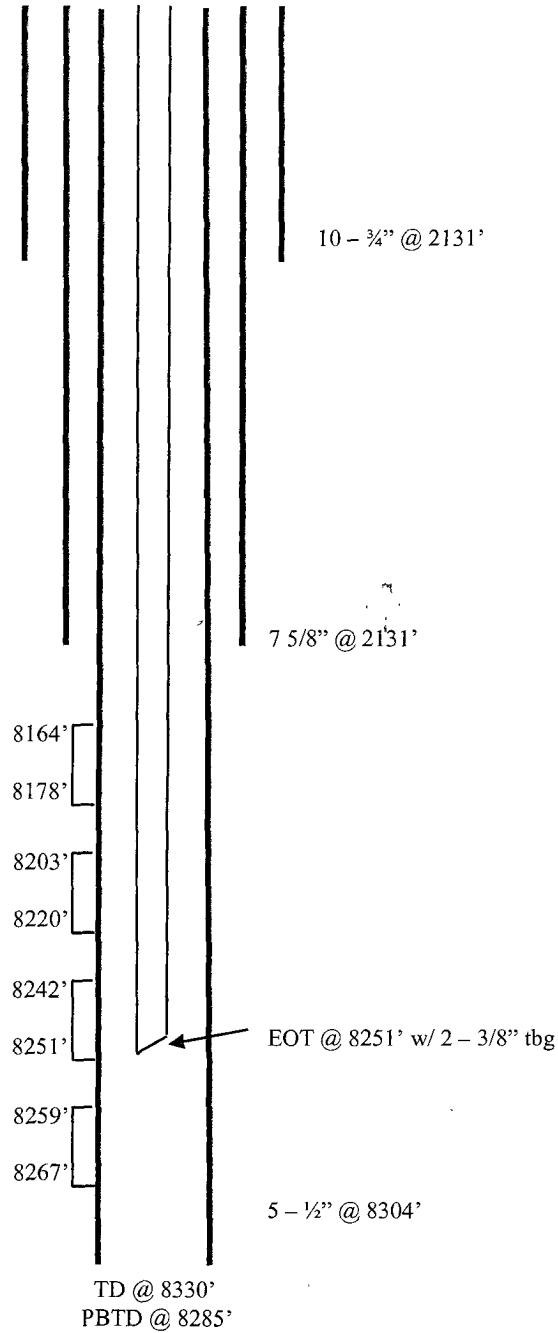
Spud date: 11/28/61

Completed: 01/16/62

Location:

1550' FSL and 1590' FEL  
Sec 19, T31N, R4W  
Rio Arriba, New Mexico

Elevation: 6571.5' GR  
API #: 30-039-07954



Hole Size	Casing	Cement	Volume	Top of CMT
13-5/8"	10-3/4"	200 sxs	213 cu.ft.	surface
9-5/8"	7-5/8"	200 sxs	4097 cu.ft.	surface
6-3/4"	5-1/2"	200 sxs	8304 cu.ft.	surface