

UNITED STATES
DEPARTMENT OF INTERIOR
BUREAU OF LAND MANAGEMENT

FORM APPROVED
Budget Bureau No. 1004-0135
Expires: March 31, 1993

SUNDRY NOTICE AND REPORTS ON WELLS

Do not use this form for proposals to drill or to deepen or reentry to a different reservoir. Use "APPLICATION TO DRILL" for permit for such proposals

5. Lease Designation and Serial No.
SF - 078889

6. If Indian, Allottee or Tribe Name

7. If Unit or CA, Agreement Designation

SUBMIT IN TRIPLICATE

1. Type of Well
Oil Well ☒ Gas Well ☐ Other ☐

2. Name of Operator
WILLIAMS PRODUCTION COMPANY

3. Address and Telephone No.
PO BOX 3102 MS 25-4, TULSA, OK 74101 (918) 573-3046

4. Location of Well (Footage, Sec., T., R., M., or Survey Description)
1550' FSL & 1590' FEL SEC. 19, T-31N, R04W

8. Well Name and No.
ROSA UNIT #43

9. API Well No.
30-039-07954

10. Field and Pool, or Exploratory Area
BASIN DAKOTA

11. County or Parish, State
RIO ARRIBA, NM

RECEIVED

NOV 13 2007

Bureau of Land Management
Farmington Field Office

CHECK APPROPRIATE BOX(s) TO INDICATE NATURE OF NOTICE, REPORT, OR OTHER DATA

TYPE OF SUBMISSION

Notice of Intent
☒ Subsequent Report
Final Abandonment

TYPE OF ACTION

Abandonment
Recompletion
Plugging Back
Casing Repair
Altering Casing
☒ Other ACID JOB

Change of Plans
New Construction
Non-Routine Fracturing
Water Shut-Off
Conversion to Injection
Dispose Water
(Note: Report results of multiple completion on Well Completion or Recompletion Report and Log form.)

13. Describe Proposed or Completed Operations (Clearly state all pertinent details, and give pertinent dates, including estimated date of starting any proposed work. If well is directionally drilled, give subsurface locations and measured and true vertical depths for all markers and zones pertinent to this work.)*

09-05-2007

MIRU, SITP = 0, SICP = 100#, BD to FB tank, ND tree, Antelope on locations, remove old lock down pins for tbq hanger, install 6 new ones, secure well & SDON.

09-06-2007

NU BOPE, RU floor & tongs, unable to pull tbq hanger, call for jars, WO tools, cont to try & free up hanger, MU 2 3/8" N-80 pup jt, XO, 4 3/4" jar, 4 3/4" DC, 4 3/4" accelerator, lift sub, set jars off @ 70K, hanger jarred free, breakout & LD tools, TOO & LD 169 jts 2 3/8" tbq, secure well & SDON.

09-07-2007

SITP=360#, SICP=360#, BD to FB tank, finish LD 2 3/8" tbq, 264 jts total, notched collar, "F" nipple, 1 jt up, pin ends pitted, light scale on ID, PU BHA & TIH, tally 2 3/8", 4.7#, J-55, eue tbq, PU & TIH, secure well & SDFW.

Continued on attached sheets:

RCVD NOV 19 '07
OIL CONS. DIV.
DIST. 3

14. I hereby certify that the foregoing is true and correct

Signed

Rachel Lippard
Rachel Lippard

Title Engineering Technician

Date November 8, 2007

ACCEPTED FOR RECORD

(This space for Federal or State office use)

Approved by

Title

Date

NOV 16 2007
FARMINGTON FIELD OFFICE
BY *JET*

Conditions of approval, if any:

Title 18 U.S.C. Section 1001, makes it a crime for any person knowingly and willfully to make to any department or agency of the United States any false, fictitious or fraudulent statements or representations as to any matter within its jurisdiction.

NMOCD

09-10-2007

SITP=0, SICP=540#, BD to tank, PU 2 3/8" tbg, tag @ 8276', CO 2' of fill w/ 12 bph mist to PBTD @ 8278', circ clean, took bucket test @ 14:00 = no sand, bypass mist & unload water, bypass air, LD 2 jts, pull 9 stds, NF well to tank 2.5 hr, secure well & SDON.

09-11-2007

SITP=0, SICP=460#, BD to tank, RIH w/ 20 jts, tag @ 8278' PBTD, no fill, mix 20 gal BJ techniclean w/ 20 bbls 2% kcl, pump down hole w/ air & circ back to tank, bypass air, land 2 3/8" tbg as follows, top down w/ KB correction: tbg hanger, 244 jts 2 3/8", 4.7#, J-55, eue tbg to 7915', XO coupling, 10 jts 2 3/8", 4.6#, J-55, nue tbg, XO coupling, 1.875" ID "X" nipple @ 8218', 3' x 2 3/8" eue pup jt, 1.78" ID inline exp check @ 8222', 4' X 1/2 mulshoe 2 3/8" eue pup jt landed @ 8227', (perfs 8164' - 8267'), NU tree, pump off check @ 560#, RD & release rig to the Rosa 146B.

10-25-2007

MIRU, set up w/ rig mast, NU w/ frac tank, fill w/ kcl. NU w/ FB tank, 250# csg & tbg, BD to FB tank. ND w/ xmas tree & NU w/ BOP, function test same. NU w/ work platform, unland tbg, TDH w/ prod tbg. Tag fill @ 3284' = 17' below bottom perf. NU w/ air pack, break circ w/ 10 bph air/soap/corrosion inhibitor in 30 min @ 650#, broke back to 550# no wtr displacement. Unable to make any hole. Circ & made soap sweeps recovered load wtr only. ND w/ air pack. TOOH w/ 2 3/8" prod string tbg meas & LD down in sgls. Recovered 254 jts used 2 3/8" tbg = 8215', MSFN.

10-26-2007

Csg = 280#, bled down to FB tank. Loaded out w/ 2 3/8" PS tbg, sent to Tubascope for inspection. MIRU new 2 7/8" PS tbg. MIRU w/ BWWC WL equip, ran Gamma Density Log from 8285' to 6000', correlated w/ open hole log. Perf DK Zone w/ 288 x .42 holes x 22.25" pent x 23 gram x 6 SPF as follows: 8164' to 8178', 8203' to 8220', 8242' to 8251' & 8259' to 8367'. Pumped 120 bbls 25 KCL while perforating. RD w/ BWWC WL equip, MSFN, RD until Monday, 10/29/07.

10-29-2007

Csg = 80#, bled down to FB tank. Replaced pipe rams w/ 2 7/8" rams & function test BOP. Rigged to run 2 7/8" tbg. MU Knight Aero-Set CST-10K packer, TIH w/ packer on new 2 7/8", J-55, 8rd, EUE, 6.5# prod string tbg, PU tbg in sgls, measure & rabbited same.

10-30-2007

80# tbg, bled down to FB tank. MIRU w/ BJ, press test lines @ 6000#. Pump acid treatment w/ rock salt & nitrogen across DK Zone 8164' - 8267', pump down 2 7/8" tbg w/ pkr set @ 8132'. Pump 4 acid stages w/ nitrogen & 3 salt stages w/ nitrogen. Flush w/ 140,000 SCF nitrogen, followed w/ 12 bbls wtr. Pump total 131 bbls 15% HCL, 45 bbls wtr, 3000# rock salt, 460,000 SCF nitrogen, min press = 2900#, MTP = 4900# & ATP = 4200#. Rates treating = 3 bpm, flush = 2 bpm, aver = 3 bpm. ISDP = 4650#, 5 min = 3370#, 10 min = 3224#, 15 min = 3120. SI @ 12:12 hrs = 4710#, pump 12 bbls wtr & @ 12:41 hrs = 3745#. SI 1 hr, final press = 2650#. FB @ 1400 hrs = 1900#, 1" choke, 20 bph wtr; 1500 hrs = 1100#, 2" line, 20 bbls wtr; 1700 hrs 40#, 10 bph; 1800 hrs = 3#, no wtr. SI 1 hr, 1900 hrs = 290 psi. Recover 7 bbls wtr, BD to 8 psi. SI 1 hr, press built to 210 psi, left SI for 1 more hr. FB overnight. Recover 132 bbls wtr flowing back.

10-31-2007

FB overnight. Rec 15 bbls wtr from 20:00 hrs to 07:00 hrs, total wtr rec = 147 bbls. Press build up 0# to 200 # in 2 hrs, rec heavy acid concentrate. ND w/ FB lines & manifold, rig to pull tbg. Pump 10 bbls kcl down tbg to flush of acid. Release pkr, TOH w/ tbg & pkr assy, load out w/ pkr. MU prod assy w/ 9 jts 2 7/8" NUE tbg & TIH w/ same on 2 7/8" 8-EUE prod tbg. Tagged top of fill @ 8248' = 36' fill pbtd @ 8284' 19' of the bottom perfs covered up. NU w/ air pack, broke circ w/ 10 bph air/soap/corrosion inhibitor in 50 mins @ 1250#. Displaced 60 bbls wtr w/ air & press leveled off @ 650#. Circ crushed frac sand from 8248' to pbtd @ 8284'. Rec 2 cups sand in 5 gallon bkt test, 80 sec to fill bkt. Total wtr pumped to-date = 183 bbls plus 133 bbls 15% HCL = 316 bbls liquid to rec, total wtr rec to-date = 277 bbls. Circ @ pbtd & made soap sweeps, TUH & hung off above all perfs & MSFN.

11-01-2007

Csg = 340#, bled to FB tank. TDH w/ tbg, tagged fill @ 8282' = 2' fill entry overnight. NU w/ air pack, broke circ w/ 10 bph air/soap/corrosion inhibitor. Displaced 20 bbls wtr w/ air, circ press leveled off @ 500#. Circ sand fill from 8282' to pbtd @ 8284'. Circ & made soap sweeps, cleaned up w/ no sand returns & acid paper shows acid neutralized, recovering 3 bph formation wtr. Today pumped 50 bbls kcl wtr & rec 133 bbls form wtr, to date pumped 366 bbls wtr, recovered 400 bbls wtr, all fluids pumped & recovered in wtr tally. Recovering 3 bph formation water while circ, TOH w/ tbg & hung off above all perforations, MSFN.

11-02-2007

Csg = 300#, bled to FB tank. TIH w/ tbg, tagged up @ 8284' = pbtd, no fill overnight. TUH w/ prod tbg, sgld down w/ excess tbg. Land tbg w/ X-nipple @ 8170' & OA @ 8208'. ND w/ work platform & BOP. Incorrect tbg hanger for WH. NU w/ BOP & working platform. Land tbg, ND w/ WP & BOP. NU w/ prod head, NU w/ Antelope equip & press test hanger & WH @ 1500#, solid test. Rig out w/ Antelope. NU w/ air pack. Pump ahead w/ 3 bbls kcl & drop ball, pump of exp chk @ 575#. Mix 20 gals BJ Technoclean w/ 10 bbls kcl & pump around. Circ & rec load wtr. ND w/ air pack. Loaded out w/ rig equip & clean loc. LD w/ rig mast. Moved out w/ rig & equip, moved to the Rosa #259A, RD until Monday, 11/5/07.

ROSA UNIT #43 DAKOTA

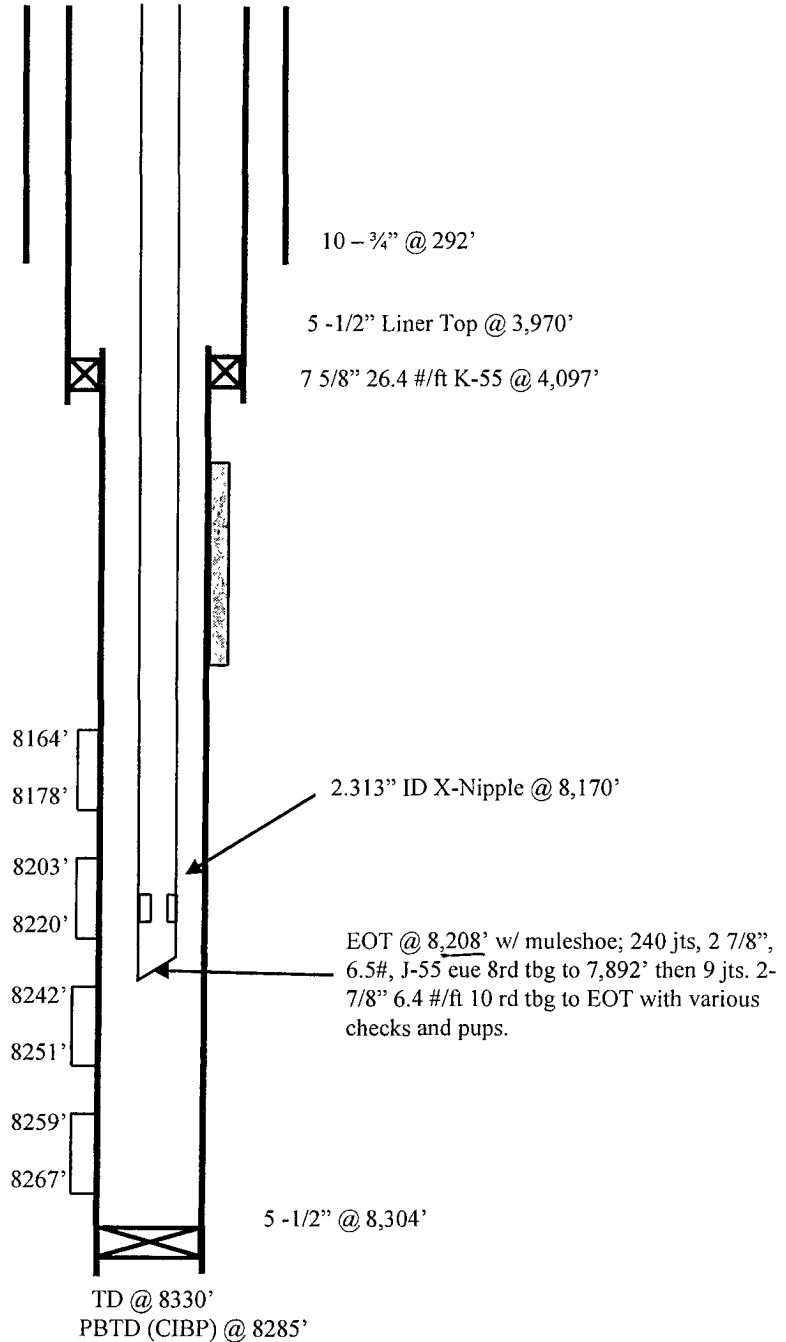
Spud date: 11/28/61

Completed: 01/16/62

Location:

1550' FSL and 1590' FEL
Sec 19, T31N, R4W
Rio Arriba, New Mexico

Elevation: 6571.5' GR
API #: 30-039-07954



Hole Size	Casing	Cement	Volume	Top of CMT
13-5/8"	10-3/4"	200 sxs	213 cu ft.	surface
9-5/8"	7-5/8"	200 sxs	4097 cu.ft	surface
6-3/4"	5-1/2"	200 sxs	8304 cu ft	surface

JKF 08-NOV-07

Last Workover 02-NOV-07

Drawing Effective Date 02-NOV-07