

**UNITED STATES
DEPARTMENT OF THE INTERIOR
BUREAU OF LAND MANAGEMENT**

**RCVD NOV 28 '07
OIL CONS. DIV.
DIST. 3**

Sundry Notices and Reports on Wells

1. **Type of Well**
GAS

2. **Name of Operator**

Burlington Resources Oil & Gas, LP

3. **Address & Phone No. of Operator**

PO Box 4289, Farmington, NM 87499 (505) 326-9700

4. **Location of Well, Footage, Sec., T, R, M**

Unit C (NENW), 790~~9~~' FNL & 790' FWL, Sec. 31, T29N, R9W, NMPM

RECEIVED

NOV 26 2007

Bureau of Land Management
Farmington Field Office

5. Lease Number
NMSF-080781
6. If Indian, All. or
Tribe Name
7. Unit Agreement Name
8. Well Name & Number
Cain #22
9. API Well No.
30-045-25037
10. Field and Pool
Blanco MV / Basin DK
11. County and State
San Juan, NM

12. CHECK APPROPRIATE BOX TO INDICATE NATURE OF NOTICE, REPORT, OTHER DATA

Type of Submission

☒ Notice of Intent

☐ Subsequent Report

☐ Final Abandonment

Type of Action

☐ Abandonment

☐ Recompletion

☐ Plugging

☐ Casing Repair

☐ Altering Casing

☐ Change of Plans

☐ New Construction

☐ Non-Routine Fracturing

☐ Water Shut off

☐ Conversion to Injection

☒ Other - Commingle

13. Describe Proposed or Completed Operations

Plans are to complete the Cain 725S, but first we need to verify that the Cain #22 has stable casing so the frac'ing procedure won't interfere with the Cain #22 production since the wells are twinned. The work to commingle the subject well will proceed us completing the Cain #725S well. See the attached procedure Burlington will be using to commingle the MV & DK production from this well. The work will not be conducted until the DHC application has been submitted and approved.

14. I hereby certify that the foregoing is true and correct.

Signed Patsy Clugston Patsy Clugston Title Sr. Regulatory Specialist Date 11/21/07

(This space for Federal or State Office use)

APPROVED BY Original Signed: Stephen Mason Title _____ Date NOV 27 2007

CONDITION OF APPROVAL, if any:

Title 18 U.S.C. Section 1001, makes it a crime for any person knowingly and willfully to make any department or agency of the United States any false, fictitious or fraudulent statements or representations as to any matter within its jurisdiction

NMOCD

BURLINGTON RESOURCES

2007 Wellbore Prep PROCEDURE

Cain # 22

790' FNL, 790' FWL
Unit D Section 31, T29N, R09W
San Juan, New Mexico

Basin DK/ Blanco MV

DK/MV Network #: TBD

NMA: Neif A. [Signature] 11/21/2007 Prepare / Production Engineer

LSE: [Signature] 11/21/07 Approve / Completion Superintendent

DIRECTION TO LOCATION:

From the intersection of US Hwy 64 & US Hwy 550 in Bloomfield, NM, travel Southerly on US Hwy 550 for 1.0 miles to County Road #4990; Go left (Easterly) on County Road #4990 for 10.1 miles to fork in road; Go right (South-easterly) for 0.4 miles to fork in road; Go right (South-easterly) for 0.1 miles to fork in road; Go right (South-westerly) for 0.6 miles to fork in road; Go left (South-easterly) for 0.2 miles to fork in road; Go right (south-westerly) for 0.1 miles to stake location which overlaps an existing wellpad.

PROJECT OBJECTIVE:

This well is existing **DK/MV** producing well since **1982**, the well is producing from **dual string**, the **DK** production tubing was landed at **6554.12`** or **(+/-188 Jts. 1 1/2" of 2.9# J-55, EUE)** and isolated by **Otis Permalatch Packer** which was set at **4471`** and **I.D of 1.94" with 8 x 1 1/2" EUE pup and have 30,000# shear value over the tubing weight**. The **MV** production tubing was landed at **4371.69`** or **(+/- 139 Jts. 1 1/2" of 2.7# J-55 EUE)**. In order to complete the new drill well known **Cain # 725S** Fruitland coal (UPE) which is only 35' FNL and 75' FWL from the existing well, a rig will be required to pull out the tubing strings from the **Cain # 22**, and set **ABP**, pressure test the casing to **1000 psig** and monitor the pressure then run **CBL** log to confirm the **TOC** which believed to be at **4050` (a squeeze job might needed if the casing pressure test failed)**. Once the operations above will be completed successfully then the tubing will be landed again for the **Cain # 22** after the **Cain # 725S** will be stimulated.

Note: *In this well 2 DV tools were ran the bottom was landed from (4800`) and the top DV tool was landed from (2300`). Correlate to the bottom DV tool if possible.*

WELLBORE PREPARATION:

1. Hold pre-job meeting prior to any operational changes and/or new day's activities with rig supervisor and Wireline Company to review procedure.
2. MIRU completion rig. Comply with all COP, hBR, BLM, NMOCD rules and regulations. Record tubing and casing pressures. RU blow lines from casing valves and begin blowing down casing pressure.
3. Kill tubing pressure with 2% KCL. **ND wellhead assembly** and **NU BOP**. Change pipe rams and handling tools to 2-3/8". **RU bleed off line from BOP**. Repair or replace any leaking or damaged valves on wellhead.
4. Kill annulus by pumping down casing valve with **2% KCL** and prepare to strip out tubing hanger. Back out jam nuts and remove tubing hanger. TOOH with MV tubing **(+/- 4371.69` or +/- 139 Joints)** tubing string. Visually inspect tubing string. **LD tubing string and stage on location, out of the way**. Report condition of tubing on Wellview report and type of scale, if any.
5. TOOH with DK Production tubing at **(+/- 6554.12` or +/- 188 Joints)** tubing string after shearing off the Otis Premalatch Packer which set at **4471`** with 1.94" ID and 8x 1-1/2" EUE pup. Visually inspect tubing string. **LD tubing string and stage on location, out of the way**. Report condition of tubing on Wellview report and type of scale, if any.

6. PU mill Bore ext. and 2 3/8" J-55 tubing, and fish packer out of the hole, clean out to bottom hole.
7. MIRU Wireline Company. Under Full lubricator, RIH with 5-1/2" **CBP**, set **CBP** @ +/- 3918' (+/- 50' **above the Top Menefee Top Perf which is at 3698'**).
8. NU. Wireline Company and TIH with **GR/CBL/CCL**, correlate to, **(the top DV tool , landed at 2300')**, and start logging from **bottom DV tool** depth to the **surface**. ND Wireline Company.
9. Verify the **TOC**, contact completion rig superintendents (Mr. James W, Lyle E.) / Mr. Wayne S. and completion engineer.
10. Load hole and pressure test the casing to 1000 psig for 15 minutes, monitor pressure closely and report any leak may notice, inform rig superintendent/engineer.
11. Wait on further instruction.

Note: Once the operations are completed for the Cain # 725S, the proposed for the Cain # 22 is to retrieve the Packer, cleanout to PBTD, land single production tubing and have the DK/MV production commingled after the BLM approval are obtained. (See the attached drawing).

Cain #22 (existing DK /MV well , drilled 1981)
 790' FNL, 790' FWL
 Unit D, Section 31,T29N,R09W
 San Juan County

Well was completed on January of 1982

Cain # 725S (2007 New drill well)
 755' FNL, 715' FWL
 Unit D Section 31,T29N,R09W
 San Juan County
 LAT: 36 Deg.41' 14.359"Min
 Long: 107 Deg 49' 30.954"Min

Cain # 22, Current Wellbore

Surface Casing:

8- 5/8" 24.0# K-55
 Set @ 243'
 TOC @ Surface

Production Casing:

5-1/2" 17.0#
 Set At: 6,670'
 TOC At: 4,050' K-55

Ojo Alamo	1,052'
Kirtland	1,060'
Fruitland	1,708'
Pictured PC	2,031'
Upper Cliff,H.	3,677'
Menefee	3,701'
PointLookout	4,320'
Gallup	5,515'
Dakota	6,464'

Menefee

3968' -4091'
 50,288 # 20/40 Az. Sand

Point Lookout

4300' -4435'
 84,000 # 20/40 Az. Sand

MV Tbg. @
 4371.69'

Dakota

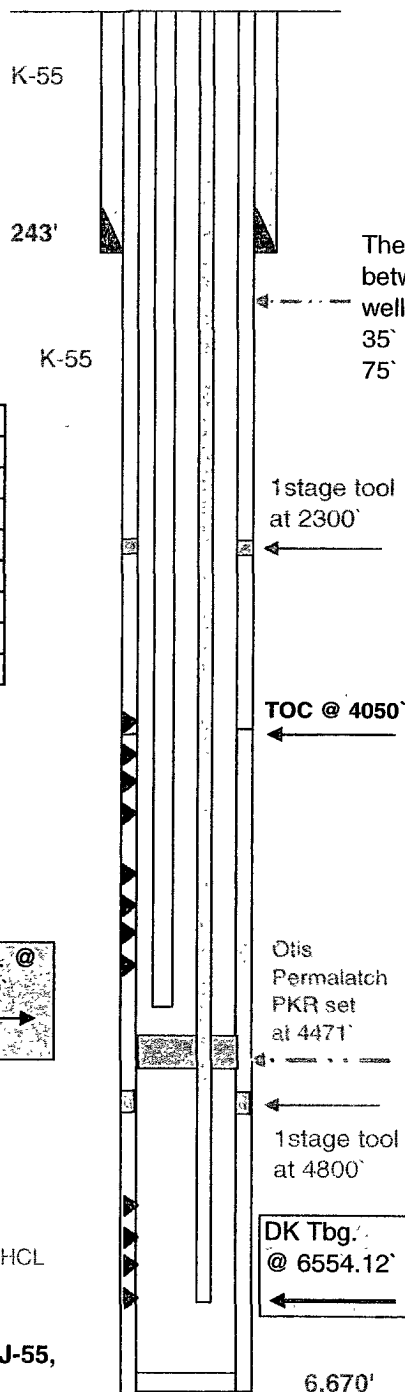
6408' -6496'
 57,000 # 20/40 TLC sand, 15%HCL

Tubing

DK: 188 Jts,1-1/2" of 2.9#,J-55,
 EUE @ (+/- 6554.12')

MV: 139 Jts,1-1/2" of 2.7#,
 J-55 EUE @ (+/- 4371.69')

PKR: Otis Permalatch ID 1.94"
 with 8x1 1/2" EUE Pup, have
 30,000# shear value over Tbg
 weight.



Cain # 725S (New Drill), Current Wellbore

Surface Casing:

7" 20# J-55
 set @ 133'
 TOC Surface

Production Casing:

4-1/2" 10.5# J-55
 Set @ 2,238'
 TOC Surface

Est. top Perf
 at +/- 1732'

Original PBTD= 2,194'
 OHTD = 2,250'

Estimated Tops	
Ojo Alamo	984'
Kirtland	1065'
Fruitland	1,706'
Pictured PC	2,027'

Cain #22 (existing DK /MV well , drilled 1981)
 790' FNL, 790' FWL
 Unit D, Section 31, T29N, R09W
 San Juan County

Cain # 725S (2007 New drill well)
 755' FNL, 715' FWL
 Unit D Section 31, T29N, R09W
 San Juan County
 LAT: 36 Deg.41' 14.359"Min
 Long: 107 Deg 49' 30.954"Min

Cain # 22, Proposed Wellbore

Cain # 725S (New Drill), Current Wellbore

Surface Casing:

8- 5/8" 24.0# K-55
 Set @ 243'
 TOC @ Surface

Production Casing:

5-1/2" 17.0#
 Set At: 6,670'
 TOC At: 4,050' K-55

Ojo Alamo	1,052'
Kirtland	1,060'
Fruitland	1,708'
Pictured PC	2,031'
Upper Cliff.H.	3,677'
Menefee	3,701'
PointLookout	4,320'
Gallup	5,515'
Dakota	6,464'

Menefee

3968' -4091'
 50,288 # 20/40 Az. Sand

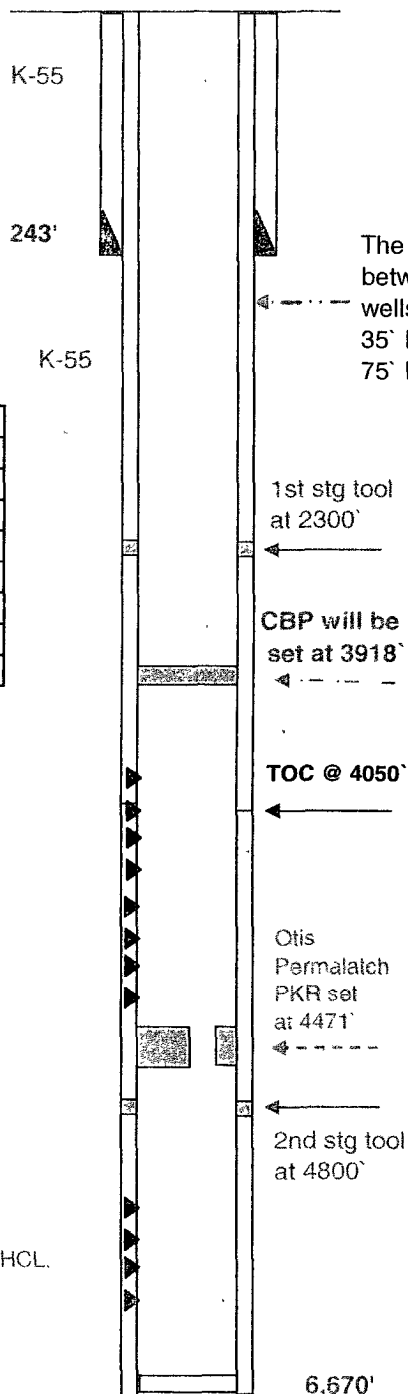
Point Lookout

4300' -4435'
 84,000 # 20/40 Az. Sand

Dakota

6408' -6496'
 57 000 # 20/40 TLC sand, 15%HCL.

PKR: Otis Permalatch ID 1.94"
 with 8x1 1/2" EUE Pup, have
 30,000# shear value over Tbg
 weight.



The distance
 between the two
 wells as following
 35' FNL
 75' FWL

1st stg tool
 at 2300'

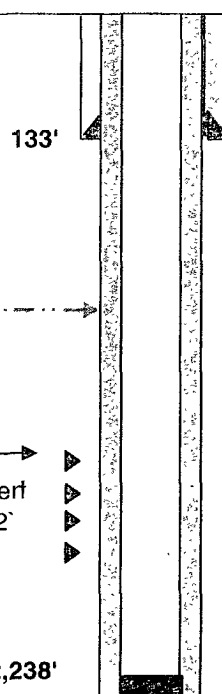
CBP will be
 set at 3918'

TOC @ 4050'

Otis
 Permalatch
 PKR set
 at 4471'

2nd stg tool
 at 4800'

6,670'



Surface Casing:

7" 20# J-55
 set @ 133'
 TOC Surface

Production Casing:

4-1/2" 10.5# J-55
 Set @ 2,238'
 TOC Surface

Est. top Perf
 at +/- 1732'

2,238'

Original PBTD= 2,194'
 OHTD = 2,250'

Estimated Tops

Ojo Alamo	984'
Kirtland	1065'
Fruitland	1,706'
Pictured PC	2,027'

Cain #22 (existing DK /MV well , drilled 1981)
 790' FNL, 790' FWL
 Unit D, Section 31,T29N,R09W
 San Juan County

Well was completed on january of 1982

Cain # 725S (2007 New drill well)
 755' FNL, 715' FWL
 Unit D Section 31,T29N,R09W
 San Juan County
 LAT: 36 Deg.41' 14.359"Min
 Long: 107 Deg 49' 30.954"Min

Cain # 22, Proposed Wellbore

Surface Casing:

8- 5/8" 24.0# K-55
 Set @ 243'
 TOC @ Surface

Production Casing:

5-1/2" 17.0#
 Set At: 6,670'
 TOC At: 4,050' K-55

Ojo Alamo	1,052'
Kirtland	1,060'
Fruitland	1,708'
Pictured PC	2,031'
Upper Cliff.H.	3,677'
Menefee	3,701'
PointLookout	4,320'
Gallup	5,515'
Dakota	6,464'

Menefee

3968'-4091'
 50,288 # 20/40 Az. Sand

Point Lookout

4300'-4435'
 84,000 # 20/40 Az. Sand

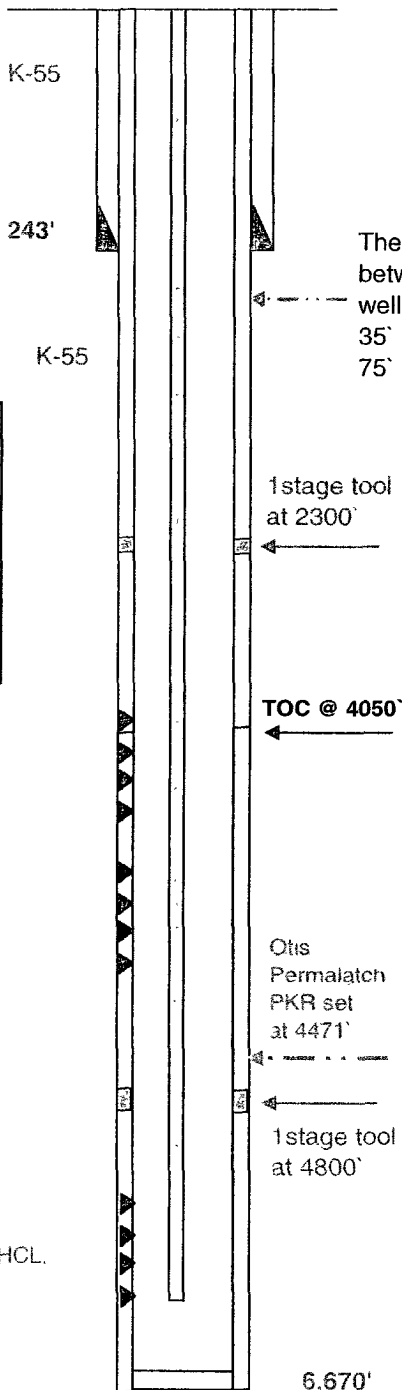
Dakota

6408'-6496'
 57,000 # 20/40 TLC sand. 15%HCL.

Proposed Tubing

DK/MV Tubing: Expendable
 check, seat nipple (SN), 1 (one)
 full joint of 2-3/8", 4.7#, J-55
 tubing 2' pup joint and remaining
 2-3/8" tubing.

Tubing will be Landed @ 6470



Cain # 725S (New Drill), Current Wellbore

Surface Casing:

7" 20# J-55
 set @ 133'
 TOC Surface

Production Casing:

4-1/2" 10.5# J-55
 Set @ 2,238'
 TOC Surface

Est. top Perf
 at +/- 1732'

Original PBTD= 2,194'
 OHTD = 2,250'

Estimated Tops	
Ojo Alamo	984'
Kirtland	1065'
Fruitland	1,706'
Pictured PC	2,027'