

UNITED STATES  
DEPARTMENT OF THE INTERIOR  
BUREAU OF LAND MANAGEMENTFORM APPROVED  
OMB NO. 1004-0136  
Expires: November 30, 2000

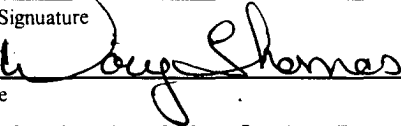

## APPLICATION FOR PERMIT TO DRILL OR REENTER

1a. Type of Work <input checked="" type="checkbox"/> DRILL <input type="checkbox"/> REENTER		5. Lease Serial No. Jicarilla Contract 98
1b. Type of Well <input type="checkbox"/> Oil Well <input checked="" type="checkbox"/> Gas Well <input type="checkbox"/> Other <input type="checkbox"/> Single Zone <input checked="" type="checkbox"/> Multiple Zone		6. If Indian, Allottee or Tribe Name Jicarilla Apache 21940
2. Name of Operator Energen Resources Corporation		7. Unit or CA Agreement Name and No. Jicarilla 98 12B
3a. Address		8. Lease Name and Well No.
3b. Phone No. (include area code)		9. API Well No. 30-039-27309
4. Location of Well (Report location clearly and in accordance with any State requirements)* At surface 890' FSL, 940' FEL At proposed prod. zone		10. Field and Pool, or Exploratory Blanco Mesaverde
14. Distance in miles and direction from nearest town or post office* 12 miles northwest of Lindrith, New Mexico		11. Sec., T., R., M., or Blk. and Survey or Area P Sec. 18, T26N, R03W, N.M.P.M.
5. Distance from proposed* location to nearest property or lease line, ft. (Also to nearest drg. unit line, if any) 890'	16. No. of Acres in lease 2508.2	17. Spacing Unit dedicated to this well 320 S 1/2
18. Distance from proposed location* to nearest well, drilling, completed, applied for, on this lease, ft. 800'	19. Proposed Depth 6360'	20. BLM/BIA Bond No. on file
21. Elevations (Show whether DF, KDB, RT, GL, etc.) 7098' GL	22. Approximate date work will start* February 03	23. Estimated duration 10 Days

## 24. Attachments

The following, completed in accordance with the requirements of Onshore Oil and Gas Order No. 1, shall be attached to this form:

- |   |  |
|---|--|
| 1. Well plat certified by a registered surveyor.  | 4. Bond to cover the operations unless covered by an existing bond on file (see Item 20 above).    |
| 2. A Drilling Plan  | 5. Operator certification.   |
| 3. A Surface Use Plan (if the location is on National Forest System Lands, the SUPO shall be filed with the appropriate Forest Service Office). | 6. Such other site specific information and/or plans as may be required by the authorized officer. |

25. Signature 	Name (Printed/Typed) Doug Thomas	Date 11/27/02
Title Production & Completion Foreman		
Approved by (Signature)  Assistant Field Manager	Name (Printed/Typed)	Date FEB 4 2003
Title /s/ David R. Sitzler	Office	

Application approval does not warrant or certify that the applicant holds legal or equitable title to those rights in the subject lease which would entitle the applicant to conduct operations thereon.

Conditions of approval, if any, are attached.

Title 18 U.S.C. Section 1001 and Title 43 U.S.C. Section 1212, make it a crime for any person knowingly and willfully to make to any department or agency of the United States any false, fictitious or fraudulent statements or representations as to any matter within its jurisdiction.

\*(Instructions on Reverse)

02 FEB -11 PM 2:14

1980. Hobbs, NM 88241-1980  
District II  
PO Box 700, Artesia, NM 88211-0719  
District III  
1000 Rio Brazos Rd., Aztec, NM 87410  
District IV  
PO Box 2088, Santa Fe, NM 87504-2088

Energy, Minerals & Natural Resources Department

OIL CONSERVATION DIVISION  
PO Box 2088  
Santa Fe, NM 87504-2088

Revised February 21, 1994  
Instructions on back  
Submit to Appropriate District Office  
State Lease - 4 Copies  
Fee Lease - 3 Copies

☐ AMENDED REPORT

WELL LOCATION AND ACREAGE DEDICATION PLAT

*API Number <b>30-039-27309</b>	*Pool Code <b>72319</b>	*Pool Name <b>BLANCO MESAVERDE</b>
*Property Code <b>21940</b>	*Property Name <b>JICARILLA 98</b>	*Well Number <b>128</b>
*OGRID No. <b>162928</b>	*Operator Name <b>ENERGEN RESOURCES CORPORATION</b>	*Elevation <b>7098'</b>

<sup>10</sup> Surface Location

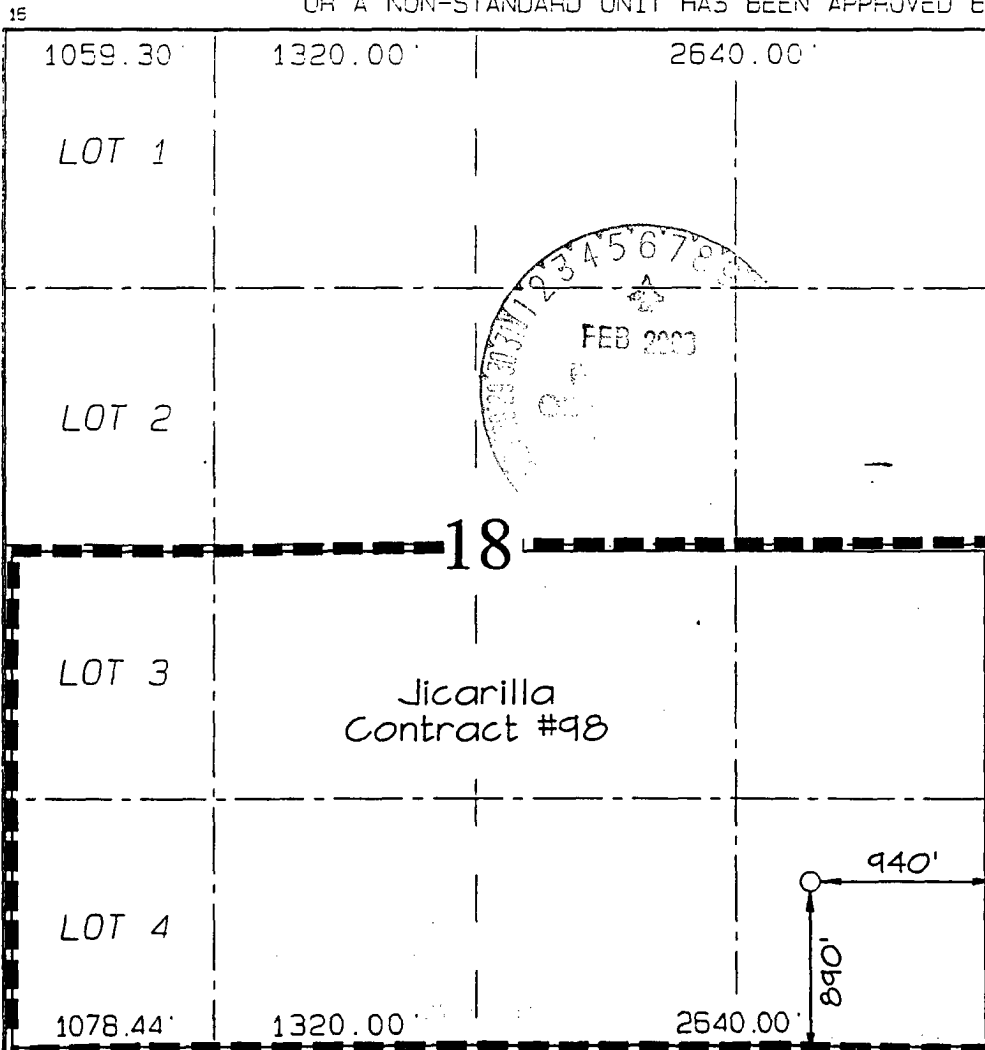
UL or lot no. <b>P</b>	Section <b>18</b>	Township <b>26N</b>	Range <b>3W</b>	Lot Idn	Feet from the	North/South line <b>SOUTH</b>	Feet from the	East/West line <b>EAST</b>	County <b>RIO ARriba</b>
---------------------------	----------------------	------------------------	--------------------	---------	---------------	----------------------------------	---------------	-------------------------------	-----------------------------

<sup>11</sup> Bottom Hole Location If Different From Surface

UL or lot no.	Section	Township	Range	Lot Idn	Feet from the	North/South line	Feet from the	East/West line	County
---------------	---------	----------	-------	---------	---------------	------------------	---------------	----------------	--------

<sup>12</sup> Dedicated Acres <b>305.07 Acres - (S/2)</b>	<sup>13</sup> Joint or Infill	<sup>14</sup> Consolidation Code	<sup>15</sup> Order No
--	-------------------------------	----------------------------------	------------------------

NO ALLOWABLE WILL BE ASSIGNED TO THIS COMPLETION UNTIL ALL INTERESTS HAVE BEEN CONSOLIDATED OR A NON-STANDARD UNIT HAS BEEN APPROVED BY THE DIVISION



<sup>17</sup> OPERATOR CERTIFICATION

I hereby certify that the information contained herein is true and complete to the best of my knowledge and belief.

Signature Don Graham  
Printed Name Don Graham

Title Production Superintendent

Date 11-27-02

<sup>18</sup> SURVEYOR CERTIFICATION

I hereby certify that the well location shown on this plat was plotted from field notes of actual surveys made by me or under my supervision, and that the same is true and correct to the best of my belief.

Survey Date: AUGUST 20, 2002

Signature and Seal of Professional Surveyor



JASON C. EDWARDS  
Certificate Number 15269

## OPERATIONS PLAN

WELL NAME: Jicarilla 98 #12B

LOCATION: 890' FSL, 940' FEL, Section 18, T26N, R3W, Rio Arriba, New Mexico

FIELD: Blanco Mesaverde

ELEVATION: 7098'

### FORMATION TOPS:

Surface	San Jose	Huerfanito Benonite	4240
Nacimiento	2245	Cliff House	5455
Ojo Alamo	3395	Menefee	5555
Kirtland	3480	Point Lookout	5910
Fruitland	3585	Mancos Shale	6175
Pictured Cliffs	3765		
Lewis	3940		
		<b>Total Depth</b>	<b>6360</b>

### LOGGING PROGRAM:

Open Hole Logs:

Surface to intermediate: NONE

Inter TD to total depth: Temp/HRI/CNT, LDT/GR

Mud Logs: 3600' to total depth

Coring: None

Natural Gauges: Every 500' from intermediate TD to total depth

MUD PROGRAM: Fresh water low solids mud from surface to intermediate TD (9.0 – 9.2 PPG).

Air/mist from intermediate casing point to total depth.

### CASING PROGRAM:

<u>HOLE SIZE</u>	<u>DEPTH</u>	<u>CSG SIZE</u>	<u>WT.</u>	<u>GRADE</u>
12-1/4"	200'	9-5/8"	36#	J-55
8-3/4"	4140'	7"	20#	J-55
6-1/4"	3990'-6360'	4-1/2"	10.5#	J-55

### TUBING PROGRAM:

6200'	2 3/8	4.7#	J-55
-------	-------	------	------

WELLHEAD: 11" 3000 x 9 5/8" casing head. 11" 3000 x 7 1/16" 3000 xmas tree.

### BOP SPECIFICATIONS:

An 11" 2000 psi minimum double gate BOP stack (Figure 1) will be used following nipple up of casing head. During air drilling operations, a Shaffer Type 50 or equivalent rotating head will be installed on top of the stack. A 2" nominal, 2000 psi minimum choke manifold will be used. An upper Kelly Cock valve with handle available and drill string valve to fit each drill string will be available on the rig floor during drilling operations.

### CEMENTING:

9 5/8 surface casing - Cement with 110 sks Class B Cement with 1/4" Flocele/sx and 2% calcium chloride (130 cu. ft. of slurry, 100% excess to circulate to surface). WOC 12 hrs. Test casing to 600# for 30 minutes.

Texas Pattern Guide Shoe on bottom with centralizers on the first three joints.

7" intermediate casing - cement with 420 sks 65/35 Class B Poz with 6% gel, 2% calcium chloride, 10% gilsonite, and 1/4# flocele/sk. Tail with 100 sks Class B w/2% calcium chloride, 10% gilsonite and 1/4# flocele/sk. (934 cu. Ft. of slurry, 50% excess to circulate to surface). WOC 12 hrs. If cement does not circulate, run temperature survey in 8 hrs. to determine TOC. Test casing to 1200 psi for 30 minutes.

Cement nose guide shoe on bottom with a self-fill insert float valve on top of shoe joint. 8 bow spring centralizers spaced every 2nd joint off bottom. Two turbolating centralizers at the base of the Ojo Alamo.

### 4 1/2 Production Liner

Cement with 290 sks 50/50 poz with 2% gel, 5 PPS gilsonite, .4% halad - 9 and 1/4# flocele/sk (365 cu. Ft., 50% excess to intermediate casing). WOC 18 hrs prior to completion.

Cement nose guide shoe on bottom with float collar on top of shoe joint. Liner hanger will have a neopreme packoff on top.

### OTHER INFORMATION:

- 1) The Blanco Mesaverde and Gallup Dakota will be completed and downhole commingled.
- 2) No abnormal temperatures or pressures are anticipated.
- 3) Anticipated pore pressure for the Gallup is 900, Mesa Verde is 800, Pictured Cliffs is 500 and the Fruitland 400 psi.
- 4) If lost circulation is encountered, sufficient LCM will be added to the mud system to maintain well control.
- 5) This gas is dedicated.